

District I  
1625 N. French Dr., Hobbs, NM 88240  
Phone: (575) 393-6161 Fax: (575) 393-0720  
District II  
811 S. First St., Artesia, NM 88210  
Phone: (575) 748-1283 Fax: (575) 748-9720  
District III  
1000 Rio Brazos Road, Aztec, NM 87410  
Phone: (505) 334-6178 Fax: (505) 334-6170  
District IV  
1220 S. St. Francis Dr., Santa Fe, NM 87505  
Phone: (505) 476-3460 Fax: (505) 476-3462

State of New Mexico  
Energy, Minerals & Natural Resources Department  
OIL CONSERVATION DIVISION  
1220 South St. Francis Dr.  
Santa Fe, NM 87505

Form C-102  
Revised August 1, 2011  
Submit one copy to appropriate  
District Office

☐ AMENDED REPORT

WELL LOCATION AND ACREAGE DEDICATION PLAT

|                            |                                  |                                 |
|----------------------------|----------------------------------|---------------------------------|
| <sup>1</sup> API Number    | <sup>2</sup> Pool Code           | <sup>3</sup> Pool Name          |
|                            | 98187                            | WC025 G09 S253502D;UPR WOLFCAMP |
| <sup>4</sup> Property Code | <sup>5</sup> Property Name       | <sup>6</sup> Well Number        |
|                            | PARADE WCXY STATE COM            | 1H                              |
| <sup>7</sup> OGRID No.     | <sup>8</sup> Operator Name       | <sup>9</sup> Elevation          |
| 372031                     | OneEnergy Partners Operating LLC | 3258.1'                         |

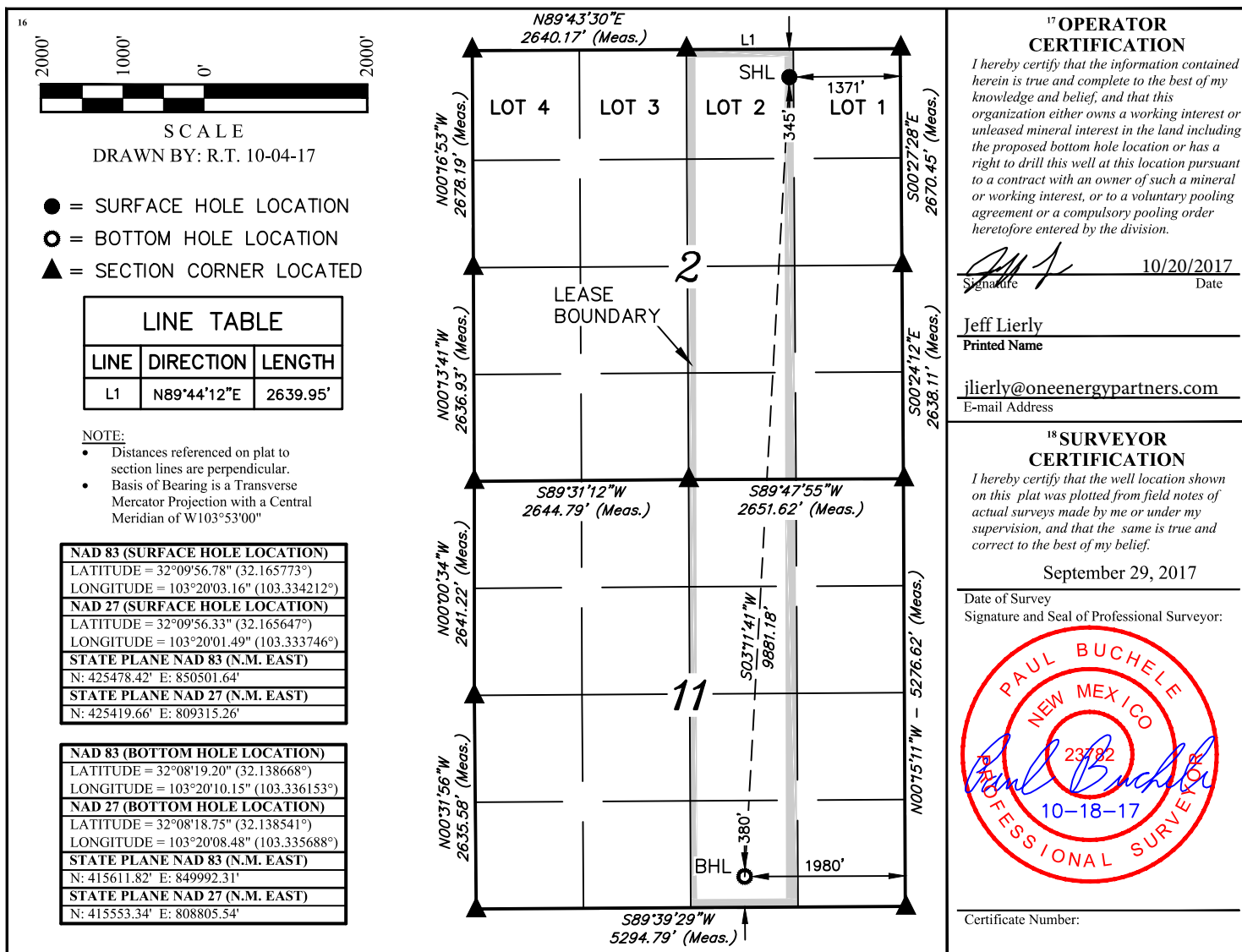
<sup>10</sup> Surface Location

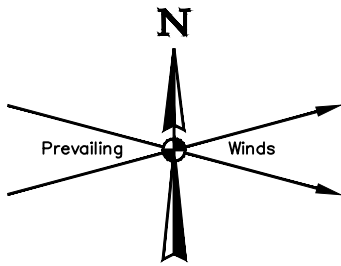
|               |         |          |       |         |               |                  |               |                |        |
|---------------|---------|----------|-------|---------|---------------|------------------|---------------|----------------|--------|
| UL or lot no. | Section | Township | Range | Lot Idn | Feet from the | North/South line | Feet from the | East/West line | County |
| LOT 2         | 2       | 25S      | 35E   |         | 345           | NORTH            | 1371          | EAST           | LEA    |

<sup>11</sup> Bottom Hole Location If Different From Surface

|                               |                               |                                  |                         |         |               |                  |               |                |        |
|-------------------------------|-------------------------------|----------------------------------|-------------------------|---------|---------------|------------------|---------------|----------------|--------|
| UL or lot no.                 | Section                       | Township                         | Range                   | Lot Idn | Feet from the | North/South line | Feet from the | East/West line | County |
| O                             | 11                            | 25S                              | 35E                     |         | 380           | SOUTH            | 1980          | EAST           | LEA    |
| <sup>12</sup> Dedicated Acres | <sup>13</sup> Joint or Infill | <sup>14</sup> Consolidation Code | <sup>15</sup> Order No. |         |               |                  |               |                |        |
| 320.85                        |                               |                                  |                         |         |               |                  |               |                |        |

No allowable will be assigned to this completion until all interests have been consolidated or a non-standard unit has been approved by the division.

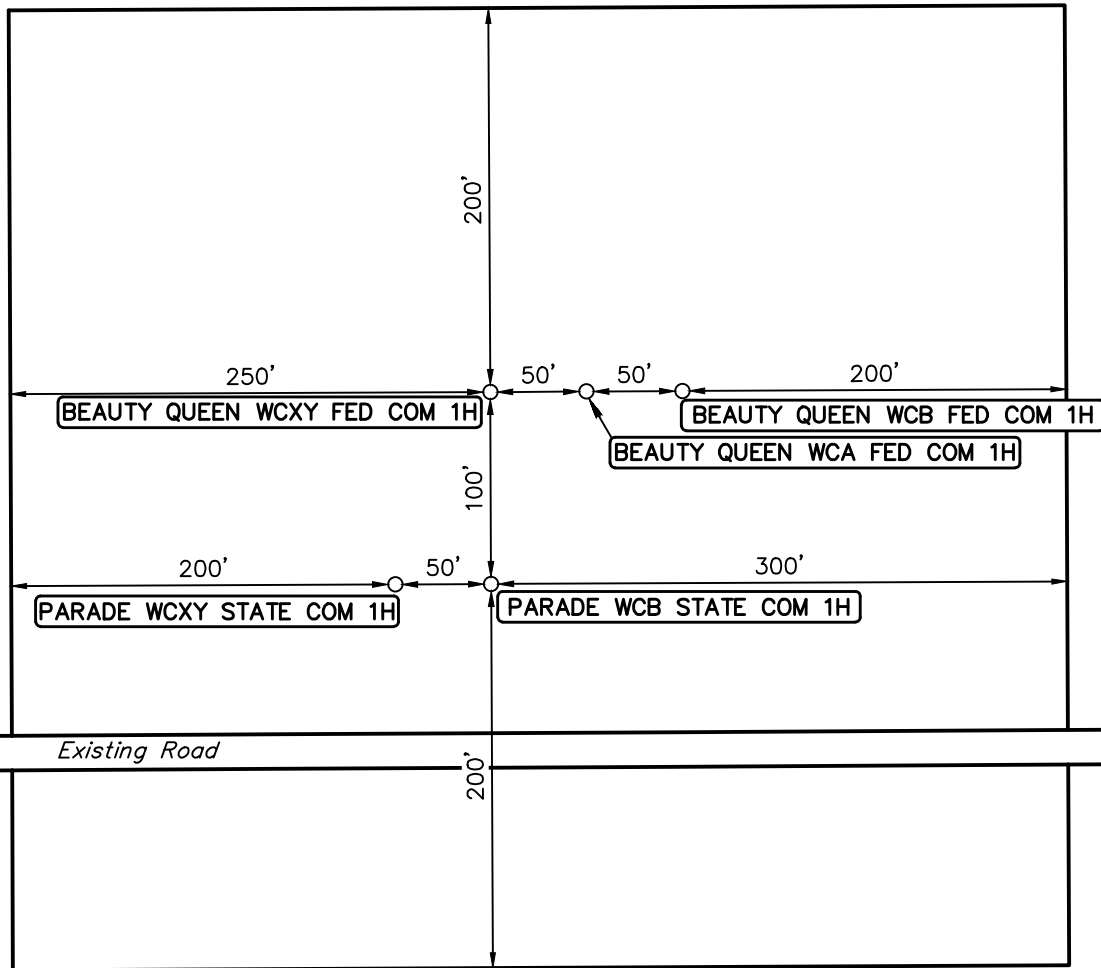




Section 35

Section 2

Existing Pipeline



Existing Road

**NOTES:**

- Contours shown at 2' intervals.
- Underground utilities shown on this sheet are for visualization purposes only, actual locations to be determined prior to construction.

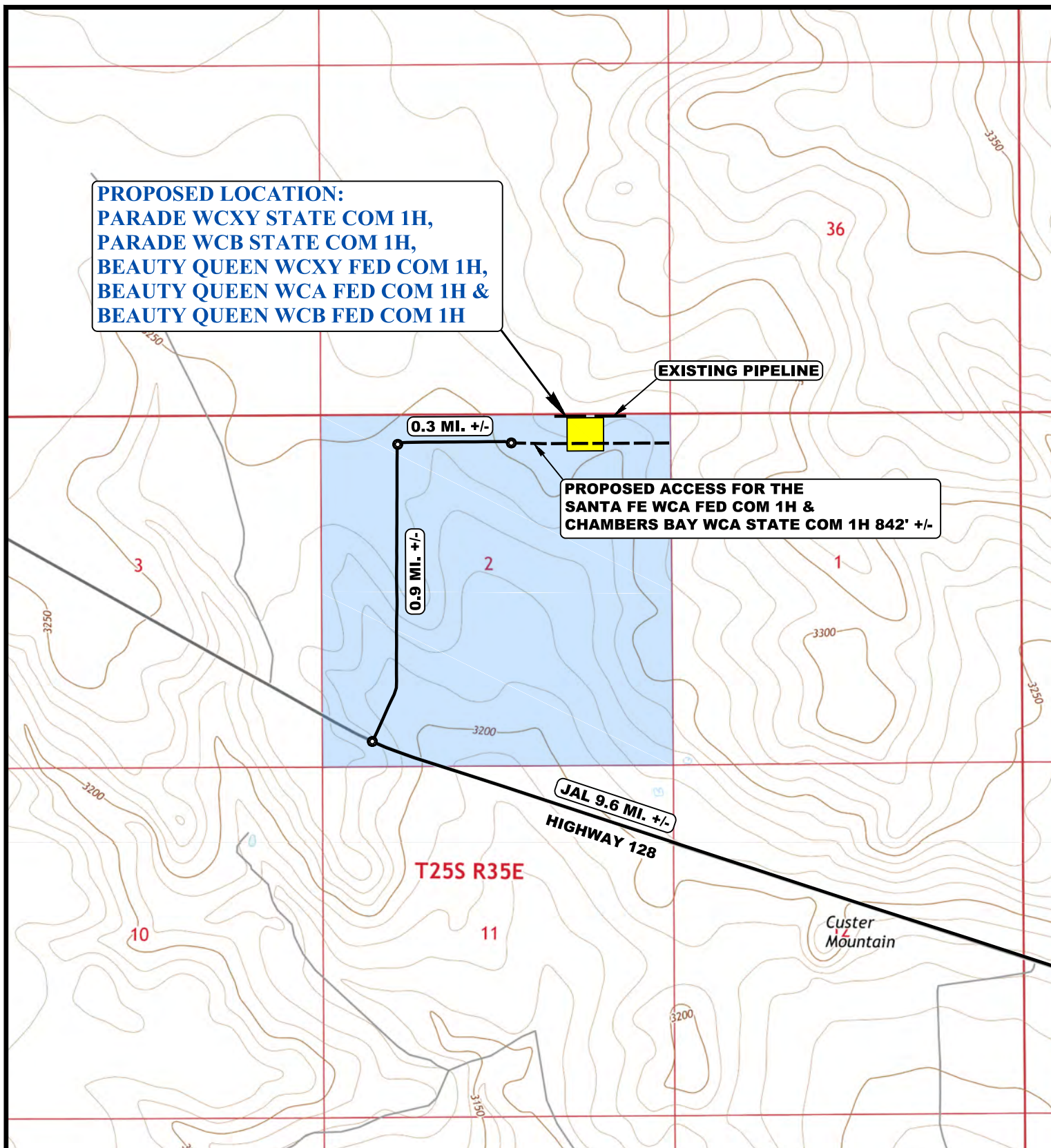
**OneEnergy Partners Operating LLC**

PARADE WCXY STATE COM 1H, PARADE WCB STATE COM 1H,  
BEAUTY QUEEN WCXY FED COM 1H,  
BEAUTY QUEEN WCA FED COM 1H &  
BEAUTY QUEEN WCB FED COM 1H  
LOTS 1 & 2, SECTION 2, T25S, R35E, N.M.P.M.  
LEA COUNTY, NEW MEXICO

|                  |            |          |           |
|------------------|------------|----------|-----------|
| SURVEYED BY      | S.R., R.D. | 09-29-17 | SCALE     |
| DRAWN BY         | R.T.       | 10-04-17 | 1" = 100' |
| <b>SITE PLAN</b> |            |          |           |



**UELS, LLC**  
Corporate Office \* 85 South 200 East  
Vernal, UT 84078 \* (435) 789-1017



NOTE: PARCEL DATA SHOWN HAS BEEN OBTAINED FROM VARIOUS SOURCES AND SHOULD BE USED FOR MAPPING, GRAPHIC AND PLANNING PURPOSES ONLY. NO WARRANTY IS MADE BY UINTAH ENGINEERING AND LAND SURVEYING (UELS) FOR ACCURACY OF THE PARCEL DATA.

#### LEGEND:

- EXISTING ROAD
- - - PROPOSED ROAD  
(SERVICING OTHER WELLS)
- - - EXISTING PIPELINE



**UELS, LLC**  
 Corporate Office \* 85 South 200 East  
 Vernal, UT 84078 \* (435) 789-1017



#### OneEnergy Partners Operating LLC

PARADE WCXY STATE COM 1H, PARADE WCB STATE COM 1H,  
 BEAUTY QUEEN WCXY FED COM 1H,  
 BEAUTY QUEEN WCA FED COM 1H &  
 BEAUTY QUEEN WCB FED COM 1H  
 LOTS 1 & 2, SECTION 2, T25S, R35E, N.M.P.M.  
 LEA COUNTY, NEW MEXICO

|                        |            |          |               |
|------------------------|------------|----------|---------------|
| SURVEYED BY            | S.R., R.D. | 09-29-17 | SCALE         |
| DRAWN BY               | R.T.       | 10-04-17 | 1 : 24,000    |
| <b>ACCESS ROAD MAP</b> |            |          | <b>TOPO B</b> |



**PROPOSED LOCATION:**  
 PARADE WCXY STATE COM 1H,  
 PARADE WCB STATE COM 1H,  
 BEAUTY QUEEN WCXY FED COM 1H,  
 BEAUTY QUEEN WCA FED COM 1H &  
 BEAUTY QUEEN WCB FED COM 1H

**EXISTING PIPELINE**

**PROPOSED ACCESS FOR THE  
 SANTA FE WCA FED COM 1H &  
 CHAMBERS BAY WCA STATE COM 1H**

**SECTION 2, T25S,  
 R35E, N.M.P.M.**

**SECTION 11, T25S,  
 R35E, N.M.P.M.**

**HIGHWAY 128**

**PARADE WCXY STATE COM 1H**  
**PARADE WCB STATE COM 1H**

**BEAUTY QUEEN WCXY FED COM 1H**  
**BEAUTY QUEEN WCA FED COM 1H**  
**BEAUTY QUEEN WCB FED COM 1H**

**LEGEND:**

-  EXISTING ROAD
-  PROPOSED ROAD  
(SERVICING OTHER WELLS)
-  EXISTING PIPELINE



**UELS, LLC**  
 Corporate Office \* 85 South 200 East  
 Vernal, UT 84078 \* (435) 789-1017



**OneEnergy Partners Operating LLC**

PARADE WCXY STATE COM 1H, PARADE WCB STATE COM 1H,  
 BEAUTY QUEEN WCXY FED COM 1H,  
 BEAUTY QUEEN WCA FED COM 1H &  
 BEAUTY QUEEN WCB FED COM 1H  
 LOTS 1 & 2, SECTION 2, T25S, R35E, N.M.P.M.  
 LEA COUNTY, NEW MEXICO

|                   |            |          |               |
|-------------------|------------|----------|---------------|
| SURVEYED BY       | S.R., R.D. | 09-29-17 | SCALE         |
| DRAWN BY          | R.T.       | 10-04-17 | 1 : 12,000    |
| <b>AERIAL MAP</b> |            |          | <b>TOPO 1</b> |