

From: [Yu, Olivia, EMNRD](#)
To: ["Bob Asher"; rmann@slo.state.nm.us](#)
Cc: [Yvette Moore](#)
Subject: RE: Waylon BMD State #8 Characterization Plan (Part 4)
Date: Monday, April 30, 2018 4:03:00 PM
Attachments: approved_linerTest_3002538256_Waylon BMD State #8 Characterization Plan.pdf
image001.png

Mr. Asher:

Notes:

- This release occurred on State surface and mineral ownership. All correspondence and communications must include NMSLO.
- Release area is in LPC habitat. BLM timing stipulations are in effect.

NMOCD approves of the proposed liner integrity test for the lined facility. Please provide photo documentation of the cleaned liner and results of the liner integrity test in next report.

Like approval from NMSLO required.

Thanks,
Olivia

From: Bob Asher <Bob_Asher@eogresources.com>
Sent: Tuesday, April 3, 2018 2:38 PM
To: Yu, Olivia, EMNRD <Olivia.Yu@state.nm.us>
Cc: Yvette Moore <Yvette_Moore@eogresources.com>
Subject: Waylon BMD State #8 Characterization Plan (Part 4)

Thank you,

Robert C. "Bob" Asher
Environmental Supervisor
Safety & Environmental Department
EOG Resources, Inc.
Artesia Division
Artesia, NM 88210
575-748-4217 (Office)
575-365-4021 (Cell)

EOG Safety Begins With YOUR Safety





EOG Resources, Inc.
Artesia Division Office
104 S. 4th Street
Artesia, N. M. 88210

APPROVED

By Olivia Yu at 3:55 pm, Apr 30, 2018

EOG Y Resources, Inc.

Characterization Plan

NMOCD approves of the
proposed liner integrity test for
incident: nOY1735250845.

Waylon BMD State #8

30-025-38256

Section 14, T11S-R34E

Lea County, New Mexico

April 3, 2018

1RP-

Table of Contents

| | | |
|------|-------------------------------|---|
| I. | Location..... | 3 |
| II. | Background..... | 3 |
| III. | Surface and Ground Water..... | 3 |
| IV. | NMOCD Ranking Criteria..... | 3 |
| V. | Liner Integrity Test..... | 4 |
| VI. | Sampling Procedure..... | 4 |

Figures:

Figure 1: Site Map

Figure 2: Site Map with Vertical Sample Point(s)

Figure 3: Site Map with Horizontal Sample Point(s)

Figure 4: Site Map with Background Sample Point(s)

Photos

Appendices:

Appendix A: Water Well Data Site Map

Appendix B: NMOSE Point of Diversion Summary

Appendix C: USGS Water Information System

Appendix D: Form C-141 Initial

I. Location

From Tatum, NM, travel west on US Highway 380 for approximately 12 miles to Four Lakes Road. Turn right (North) and continue for approximately 2.5 miles, turn right (East), before cattle guard onto Farm Road. Continue approximately 0.5 miles, to a "Y" in the road and turn left, continue through a cattle guard. Curve back West and then and continue North for approximately 1.7 miles to a "T" in the road. Turn right (East) and continue for approximately 0.4 miles to the Southwest corner of the well pad.

II. Background

On December 15, 2017, EOG Y Resources, Inc. submitted to the NMOCD District I Office a Form C-141 for the release of 5 B/O with 4.5 B/O recovered (the remaining 0.5 B/O entrained within the gravel). The affected area is approximately 30' X 30' within the containment of the production facility and was contained within the bermed and lined battery. The release was caused by a production tank, a valve was left open causing the oil to equalize and overflow the tank. A vacuum truck was dispatched and recovered 90% of the released oil. A roustabout crew was dispatched and excavated the visibly impacted gravel. The impacted gravel excavated was hauled to an NMOCD approved disposal facility.

III. Surface and Ground Water

Area surface geology is Paleozoic Permian. Based on information regarding this location (Section 14, T11S-R34E), the New Mexico Office of the State Engineer (NMOSE) database depth to groundwater is follows: (NMOSE-L06372, DTGW @ 80'), the United States Geological Survey National Water Information System, is as follows: (USGS #332301103291301, DTGW @ 18.25', USGS #332230103294501, DTGW @ 19.5', USGS #332118103283901, DTGW @ 25' & USGS #332212103282101, DTGW @ 26.5'). The depth to groundwater is <50', per USGS and NMOSE groundwater level. **Based on this information the Site Ranking is a Twenty (20).**

Watercourses in the area are dry except for infrequent flows in response to major precipitation events, with the nearest body of surface water is House Lake (0.91 miles, SW direction).

IV. NMOCD Ranking Criteria

The ranking for this site is Zero (0) based on the following:

| | |
|--------------------------------|---------|
| Depth to ground water | >100' |
| Wellhead Protection Area | > 1000' |
| Distance to surface water body | > 1000' |

Based on the ranking criteria, the NMOCD established RRALs for this site are:

| | |
|-----------|---------------------|
| Benzene | 10 ppm |
| BTEX | 50 ppm |
| TPH | 100 ppm |
| Chlorides | No established RRAL |

V. Liner Integrity Test

With the battery being bermed and lined with a 20 millimeter liner, a liner integrity test will be performed to determine if there are any leaks, tears, punctures and/or breaches. The battery will be filled with fresh water and the level gauged. After a period of three (3) hours, the water level will be gauged again, based off of the measurements, the SMA Evaporation Formula will be used to determine liner integrity, if intact a Closure Report/Form C-141 Final Report will be submitted to the NMOCD II Office requesting closure. If there is abnormal water loss that would indicate a liner failure, VI. Sampling Procedure will be implemented.

VI. Sampling Procedure

Samples will only be collected if the liner integrity test shows a failure or breach in the liner.

Vertical delineation samples (SP-1 & SP-2) will be collected within the release area. Samples will be collected at 1', 2', 3', and 4' below grade surface (bgs) or when auger and or backhoe refusal is encountered. Due to the nature of the release (produced water), the vertical delineation soil samples will be analyzed for Benzene, BTEX, TPH extended (Chlorides for documentation, with no established RRAL's for chlorides). All samples will be sent to a NMOCD approved laboratory for analysis.

Horizontal delineation samples will be collected at the 4 cardinal point (CP1-CP4) at what is believed to be the outer edge of the release area. Samples will be collected at 1' below grade surface (bgs) or when auger and or backhoe refusal is encountered. If a sample point is determined to be impacted by the release, a new sample will be collected moving out further until an area without impaction is located. Once located, samples will be taken to collaborate the impaction path to the next sample point in the sequence. Due to the nature of the release (produced water), the vertical delineation soil samples will be analyzed for Benzene, BTEX, TPH extended (Chlorides for documentation). All samples will be sent to a NMOCD approved laboratory for analysis.

As a baseline for all sampling analytical data, a background sample (BG-1) will be collected east of the battery.

Latitude/Longitude Coordinates for Sample Points

| | |
|------|---------------------------|
| SP-1 | 33.371035°; -103.483048° |
| SP-2 | 33.371009°; -103.483073° |
| CP-1 | 33.371059°; -103.483051° |
| CP-2 | 33.370987°; -103.483067° |
| CP-3 | 33.371018°; -103.483030° |
| CP-4 | 33.371027°; -103.483087 ° |
| BG-1 | 33.371074°; -103.483200° |

Figure 1

Site Map

Waylon BMD State #8

Section 14, T11S-R34E
Lea County, New Mexico
Site Map

Legend

- Waylon BMD State #8



Google Earth

© 2018 Google

2000 ft



Figure 2

Vertical Sample Point(s)

Waylon BMD State #8

Section 14, T11S-R34E
Lea County, New Mexico

Legend

- Untitled Polygon
- Vertical Sample Point
- Vertical Sample Point
- Waylon BMD State #8

Google Earth

© 2018 Google

2000 ft



Figure 3

Horizontal Sample Point(s)

Waylon BMD State #8

Section 14, T11S-R34E
Lea County, New Mexico

Legend

- Horizontal Sample Points
- Untitled Polygon
- Waylon BMD State #8

Figure 4

Background Sample Point(s)

Waylon BMD State #8

Section 14, T11S-R34E
Lea County, New Mexico

Legend

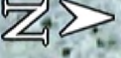
- Background Sample Point
- Untitled Polygon
- Waylon BMD State #8

BG-1

Google Earth

© 2018 Google

90 ft



Photos



Geog y resources (575) 748-1471

MAYLON State Unit #8

660' FNL & 2310' FWL - NE/NW

Sec. 14 - T 11 S - R 34 E - Unit C

Lea Co. New Mexico

Lea. # V0-5305 - API #30-025-38256

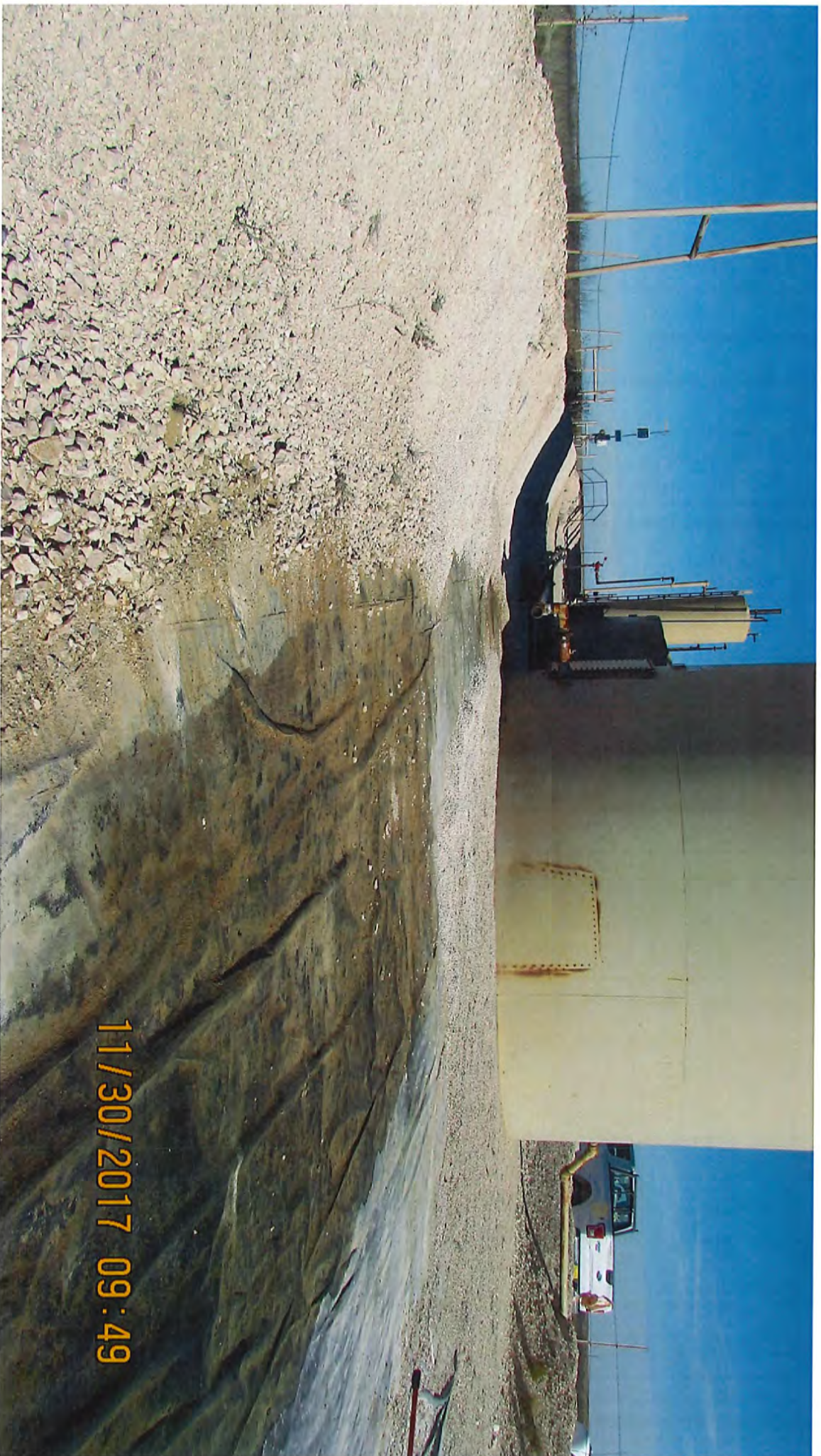
AFE # 07-268-0

11/30/2017 09:47





11/30/2017 09:49





11/30/2017 09:50



Appendix A

Water Well Data Site Map



Waylon BMD State #8

Section 14, T11S-R34E

Lea County, New Mexico

Water Well Data: Site Ranking is Twenty (20). Depth to Ground Water: <50'
(Approximately 33.85', per NMOSE & USGS Groundwater Levels).

Legend

-  USGS & NMOSE Water Wells
-  Waylon BMD State #8

USGS 332301103291301 (DTGW @ 18.25')

USGS 332230103294501 (DTGW @ -19.51')

USGS 332212103282101 (DTGW @ 26.5')

Waylon BMD State #8

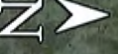
NMOSE L 06372 (DTGW @ 80')

Google Earth

© 2018 Google

USGS 332118103283901 (DTGW @ 25')

1 mi



Appendix B

NMOSE Point of Diversion Summary



New Mexico Office of the State Engineer

Point of Diversion Summary

(quarters are 1=NW 2=NE 3=SW 4=SE)

(quarters are smallest to largest)

(NAD83 UTM in meters)

| | | | | |
|-----------------|-------------------|-------------------------------|----------|----------|
| Well Tag | POD Number | Q64 Q16 Q4 Sec Tws Rng | X | Y |
| L 06372 | | 3 1 16 11S 34E | 637458 | 3693013* |

Driller License: 46

Driller Company: ABBOTT BROTHERS COMPANY

Driller Name: MURRELL ABBOTT

Drill Start Date: 08/18/1968

Drill Finish Date: 08/19/1968

Plug Date: 10/31/1968

Log File Date: 10/03/1968

PCW Rcv Date:

Source: Shallow

Pump Type:

Pipe Discharge Size:

Estimated Yield:

Casing Size:

Depth Well: 124 feet

Depth Water: 80 feet

Water Bearing Stratifications:

Top Bottom Description

80 110 Sandstone/Gravel/Conglomerate

112 120 Sandstone/Gravel/Conglomerate

*UTM location was derived from PLSS - see Help

The data is furnished by the NMOSE/ISC and is accepted by the recipient with the expressed understanding that the OSE/ISC make no warranties, expressed or implied, concerning the accuracy, completeness, reliability, usability, or suitability for any particular purpose of the data.

Appendix C

USGS Water Information System



[USGS Home](#)
[Contact USGS](#)
[Search USGS](#)

National Water Information System: Web Interface

[USGS Water Resources](#)

Data Category:

Site Information ▼

Geographic Area:

United States ▼

GO

Click to hide News Bulletins

- [Please see news on new formats](#)
- [Full News](#) 

USGS 332301103291301 11S.34E.02.33100

Available data for this site

SUMMARY OF ALL AVAILABLE DATA ▼

GO

Well Site

DESCRIPTION:

Latitude 33°23'01", Longitude 103°29'13" NAD27

Lea County, New Mexico

Well depth: not determined.

Land surface altitude: 4,145 feet above NAVD88.

Well completed in "Ogallala Formation" (121OGLL) local aquifer

AVAILABLE DATA:

| Data Type | Begin Date | End Date | Count |
|------------------------------------------------------|------------|------------|-------|
| Field groundwater-level measurements | 1981-02-17 | 1990-11-30 | 3 |

OPERATION:

Record for this site is maintained by the USGS New Mexico Water Science Center

Email questions about this site to [New Mexico Water Science Center Water-Data Inquiries](#)

[Questions about sites/data?](#)

[Feedback on this web site](#)

[Automated retrievals](#)

[Help](#)

[Data Tips](#)

[Explanation of terms](#)

[Subscribe for system changes](#)

[News](#)

[Accessibility](#)

[Plug-Ins](#)

[FOIA](#)

[Privacy](#)

[Policies and Notices](#)

[U.S. Department of the Interior](#) | [U.S. Geological Survey](#)

Title: NWIS Site Information for USA: Site Inventory

URL: <https://waterdata.usgs.gov/nwis/inventory?>



Page Contact Information: [USGS Water Data Support Team](#)

Page Last Modified: 2017-12-15 08:55:07 EST

0.28 0.26 caww01



USGS Home
Contact USGS
Search USGS

National Water Information System: Web Interface

[USGS Water Resources](#)

Data Category:

Groundwater ▼

Geographic Area:

United States ▼

GO

Click to hideNews Bulletins

- [Please see news on new formats](#)
- [Full News](#) 

Groundwater levels for the Nation

Search Results -- 1 sites found

site_no list =

- 332301103291301

Minimum number of levels = 1

[Save file of selected sites](#) to local disk for future upload

USGS 332301103291301 11S.34E.02.33100

Available data for this site

Groundwater: Field measurements ▼

GO

Lea County, New Mexico

Hydrologic Unit Code --

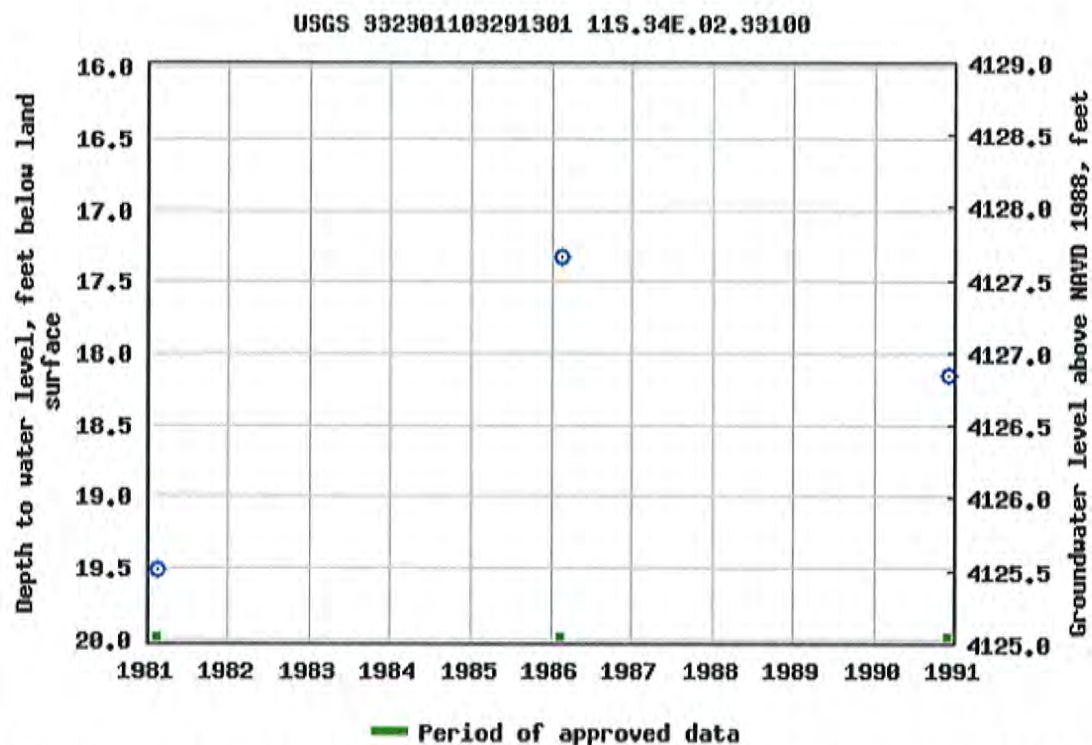
Latitude 33°23'01", Longitude 103°29'13" NAD27

Land-surface elevation 4,145 feet above NAVD88

This well is completed in the Ogallala Formation (121OGLL) local aquifer.

Output formats

| |
|------------------------------------|
| Table of data |
| Tab-separated data |
| Graph of data |
| Reselect period |



Breaks in the plot represent a gap of at least one year between field measurements.

[Download a presentation-quality graph](#)

[Questions about sites/data?](#)

[Feedback on this web site](#)

[Automated retrievals](#)

[Help](#)

[Data Tips](#)

[Explanation of terms](#)

[Subscribe for system changes](#)

[News](#)

[Accessibility](#)

[Plug-Ins](#)

[FOIA](#)

[Privacy](#)

[Policies and Notices](#)

[U.S. Department of the Interior](#) | [U.S. Geological Survey](#)

Title: Groundwater for USA: Water Levels

URL: <https://nwis.waterdata.usgs.gov/nwis/gwlevels?>



Page Contact Information: [USGS Water Data Support Team](#)

Page Last Modified: 2017-12-15 08:55:18 EST

1.04 0.93 nadww01



[USGS Home](#)
[Contact USGS](#)
[Search USGS](#)

National Water Information System: Web Interface

[USGS Water Resources](#)

Data Category:

Site Information ▼

Geographic Area:

United States ▼

GO

Click to hide News Bulletins

- [Please see news on new formats](#)
- [Full News](#) 

USGS 332230103294501 11S.34E.10.413221

Available data for this site

SUMMARY OF ALL AVAILABLE DATA ▼

GO

Well Site

DESCRIPTION:

Latitude 33°22'41", Longitude 103°29'47" NAD27

Lea County, New Mexico, Hydrologic Unit 12080001

Well depth: not determined.

Land surface altitude: 4,144.00 feet above NGVD29.

Well completed in "Ogallala Formation" (121OGLL) local aquifer

AVAILABLE DATA:

| Data Type | Begin Date | End Date | Count |
|------------------------------------------------------|------------|------------|-------|
| Field groundwater-level measurements | 1971-03-18 | 1996-01-24 | 6 |

OPERATION:

Record for this site is maintained by the USGS New Mexico Water Science Center

Email questions about this site to [New Mexico Water Science Center Water-Data Inquiries](#)

[Questions about sites/data?](#)

[Feedback on this web site](#)

[Automated retrievals](#)

[Help](#)

[Data Tips](#)

[Explanation of terms](#)

[Subscribe for system changes](#)

[News](#)

[Accessibility](#)

[Plug-Ins](#)

[FOIA](#)

[Privacy](#)

[Policies and Notices](#)

[U.S. Department of the Interior](#) | [U.S. Geological Survey](#)

Title: NWIS Site Information for USA: Site Inventory

URL: <https://waterdata.usgs.gov/nwis/inventory?>



Page Contact Information: [USGS Water Data Support Team](#)

Page Last Modified: 2017-12-15 08:45:09 EST

0.28 0.27 caww01



[USGS Home](#)
[Contact USGS](#)
[Search USGS](#)

National Water Information System: Web Interface

[USGS Water Resources](#)

Data Category:

Groundwater ▼

Geographic Area:

United States ▼

GO

Click to hideNews Bulletins

- [Please see news on new formats](#)
- [Full News](#) 

Groundwater levels for the Nation

Search Results -- 1 sites found

site_no list =

- 332230103294501

Minimum number of levels = 1

[Save file of selected sites](#) to local disk for future upload

USGS 332230103294501 11S.34E.10.413221

Available data for this site

Groundwater: Field measurements ▼

GO

Lea County, New Mexico

Hydrologic Unit Code 12080001

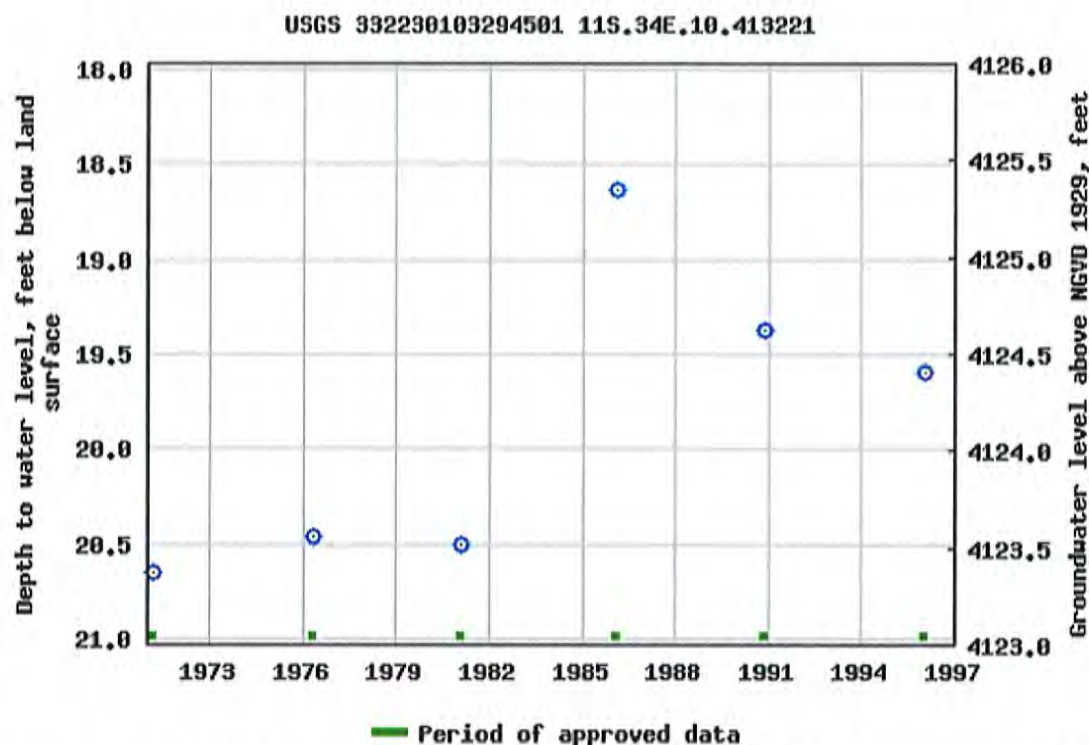
Latitude 33°22'41", Longitude 103°29'47" NAD27

Land-surface elevation 4,144.00 feet above NGVD29

This well is completed in the Ogallala Formation (121OGLL) local aquifer.

Output formats

| |
|------------------------------------|
| Table of data |
| Tab-separated data |
| Graph of data |
| Reselect period |



Breaks in the plot represent a gap of at least one year between field measurements.

[Download a presentation-quality graph](#)

[Questions about sites/data?](#)

[Feedback on this web site](#)

[Automated retrievals](#)

[Help](#)

[Data Tips](#)

[Explanation of terms](#)

[Subscribe for system changes](#)

[News](#)

[Accessibility](#)

[Plug-Ins](#)

[FOIA](#)

[Privacy](#)

[Policies and Notices](#)

[U.S. Department of the Interior](#) | [U.S. Geological Survey](#)

Title: Groundwater for USA: Water Levels

URL: <https://nwis.waterdata.usgs.gov/nwis/gwlevels?>



Page Contact Information: [USGS Water Data Support Team](#)

Page Last Modified: 2017-12-15 08:45:27 EST

5.57 0.97 nadww01



[USGS Home](#)
[Contact USGS](#)
[Search USGS](#)

National Water Information System: Web Interface

[USGS Water Resources](#)

Data Category:

Site Information ▼

Geographic Area:

United States ▼

GO

Click to hide News Bulletins

- [Please see news on new formats](#)
- [Full News](#) 

USGS 332118103283901 11S.34E.14.434441

Available data for this site

SUMMARY OF ALL AVAILABLE DATA ▼

GO

Well Site

DESCRIPTION:

Latitude 33°21'31", Longitude 103°28'38" NAD27

Lea County, New Mexico, Hydrologic Unit 12080001

Well depth: not determined.

Land surface altitude: 4,143.50 feet above NGVD29.

Well completed in "Ogallala Formation" (121OGLL) local aquifer

AVAILABLE DATA:

| Data Type | Begin Date | End Date | Count |
|------------------------------------------------------|------------|------------|-------|
| Field groundwater-level measurements | 1961-02-15 | 1981-02-17 | 5 |

OPERATION:

Record for this site is maintained by the USGS New Mexico Water Science Center

Email questions about this site to [New Mexico Water Science Center Water-Data Inquiries](#)

[Questions about sites/data?](#)

[Feedback on this web site](#)

[Automated retrievals](#)

[Help](#)

[Data Tips](#)

[Explanation of terms](#)

[Subscribe for system changes](#)

[News](#)

[Accessibility](#)

[Plug-Ins](#)

[FOIA](#)

[Privacy](#)

[Policies and Notices](#)

[U.S. Department of the Interior](#) | [U.S. Geological Survey](#)

Title: NWIS Site Information for USA: Site Inventory

URL: <https://waterdata.usgs.gov/nwis/inventory?>



Page Contact Information: [USGS Water Data Support Team](#)

Page Last Modified: 2017-12-15 08:44:47 EST

0.27 0.26 caww01



[USGS Home](#)
[Contact USGS](#)
[Search USGS](#)

National Water Information System: Web Interface

[USGS Water Resources](#)

Data Category:

Groundwater ▼

Geographic Area:

United States ▼

GO

Click to hideNews Bulletins

- [Please see news on new formats](#)
- [Full News](#) 

Groundwater levels for the Nation

Search Results -- 1 sites found

site_no list =

- 332118103283901

Minimum number of levels = 1

[Save file of selected sites](#) to local disk for future upload

USGS 332118103283901 11S.34E.14.434441

Available data for this site

Groundwater: Field measurements ▼

GO

Lea County, New Mexico

Hydrologic Unit Code 12080001

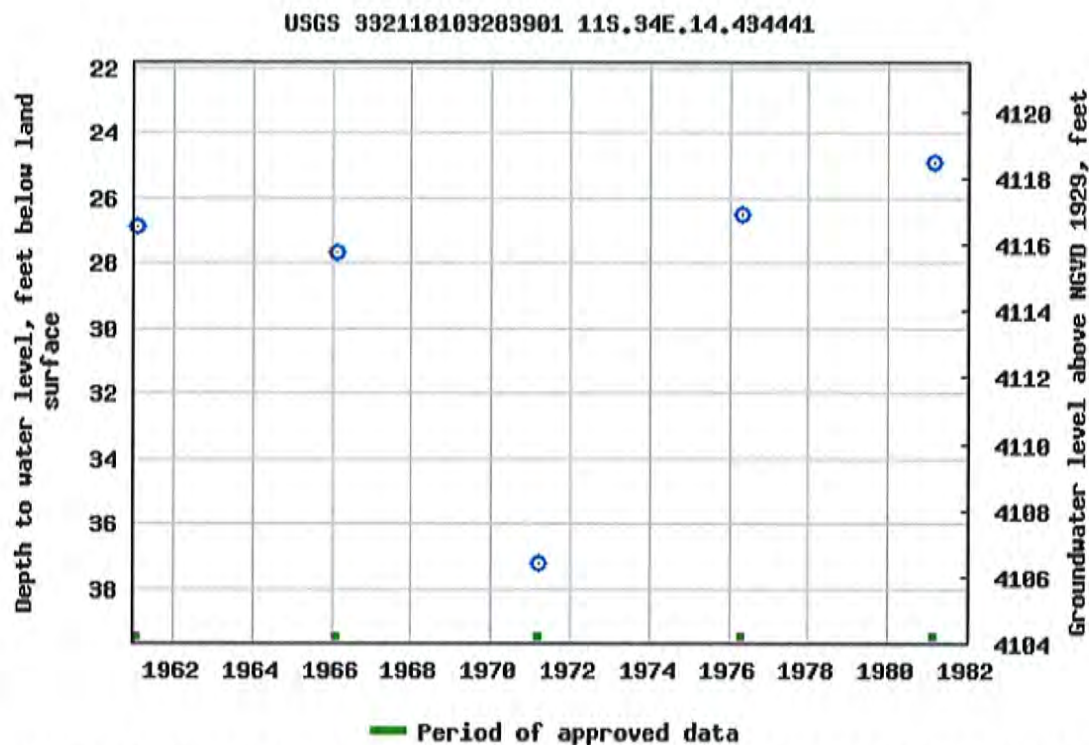
Latitude 33°21'31", Longitude 103°28'38" NAD27

Land-surface elevation 4,143.50 feet above NGVD29

This well is completed in the Ogallala Formation (121OGLL) local aquifer.

Output formats

| |
|------------------------------------|
| Table of data |
| Tab-separated data |
| Graph of data |
| Reselect period |



Breaks in the plot represent a gap of at least one year between field measurements.

[Download a presentation-quality graph](#)

[Questions about sites/data?](#)

[Feedback on this web site](#)

[Automated retrievals](#)

[Help](#)

[Data Tips](#)

[Explanation of terms](#)

[Subscribe for system changes](#)

[News](#)

[Accessibility](#)

[Plug-Ins](#)

[FOIA](#)

[Privacy](#)

[Policies and Notices](#)

[U.S. Department of the Interior](#) | [U.S. Geological Survey](#)

Title: Groundwater for USA: Water Levels

URL: <https://nwis.waterdata.usgs.gov/nwis/gwlevels?>



Page Contact Information: [USGS Water Data Support Team](#)

Page Last Modified: 2017-12-15 08:41:08 EST

1.01 0.89 nadww01



[USGS Home](#)
[Contact USGS](#)
[Search USGS](#)

National Water Information System: Web Interface

[USGS Water Resources](#)

Data Category:

Site Information ▼

Geographic Area:

United States ▼

GO

Click to hide News Bulletins

- [Please see news on new formats](#)
- [Full News](#) 

USGS 332212103282101 11S.34E.11.444

Available data for this site

SUMMARY OF ALL AVAILABLE DATA ▼

GO

Well Site

DESCRIPTION:

Latitude 33°22'25", Longitude 103°28'24" NAD27
Lea County, New Mexico , Hydrologic Unit 12080001
Well depth: not determined.
Land surface altitude: 4,138.00 feet above NGVD29.

AVAILABLE DATA:

| Data Type | Begin Date | End Date | Count |
|------------------------------------------------------|------------|------------|-------|
| Field groundwater-level measurements | 1961-02-15 | 1976-04-27 | 4 |

OPERATION:

Record for this site is maintained by the USGS New Mexico Water Science Center
Email questions about this site to [New Mexico Water Science Center Water-Data Inquiries](#)

[Questions about sites/data?](#)

[Feedback on this web site](#)

[Automated retrievals](#)

[Help](#)

[Data Tips](#)

[Explanation of terms](#)

[Subscribe for system changes](#)
[News](#)

[Accessibility](#) [Plug-Ins](#) [FOIA](#) [Privacy](#) [Policies and Notices](#)

[U.S. Department of the Interior](#) | [U.S. Geological Survey](#)

Title: NWIS Site Information for USA: Site Inventory

URL: <https://waterdata.usgs.gov/nwis/inventory?>



Page Contact Information: [USGS Water Data Support Team](#)

Page Last Modified: 2017-12-15 09:02:50 EST

0.36 0.31 caww01



[USGS Home](#)
[Contact USGS](#)
[Search USGS](#)

National Water Information System: Web Interface

[USGS Water Resources](#)

Data Category:

Groundwater ▼

Geographic Area:

United States ▼

GO

Click to hide News Bulletins

- [Please see news on new formats](#)
- [Full News](#) 

Groundwater levels for the Nation

Search Results -- 1 sites found

site_no list =

- 332212103282101

Minimum number of levels = 1

[Save file of selected sites](#) to local disk for future upload

USGS 332212103282101 11S.34E.11.444

Available data for this site

Groundwater: Field measurements ▼

GO

Lea County, New Mexico

Hydrologic Unit Code 12080001

Latitude 33°22'25", Longitude 103°28'24" NAD27

Land-surface elevation 4,138.00 feet above NGVD29

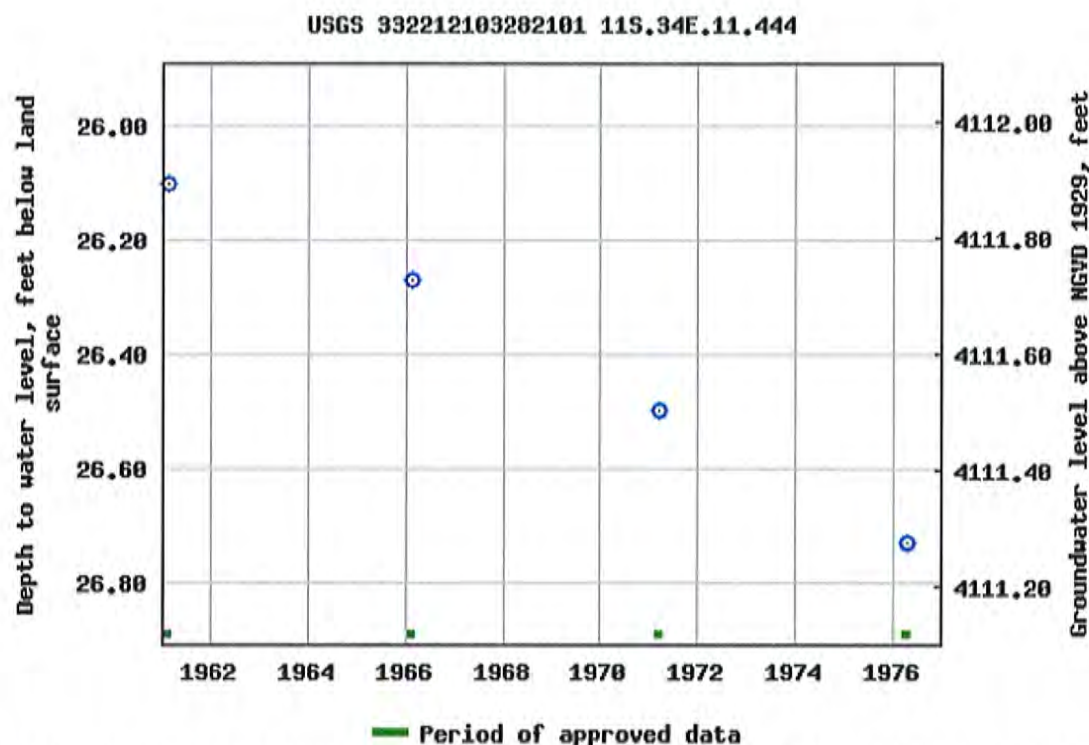
Output formats

[Table of data](#)

[Tab-separated data](#)

[Graph of data](#)

[Reselect period](#)



Breaks in the plot represent a gap of at least one year between field measurements.

[Download a presentation-quality graph](#)

[Questions about sites/data?](#)

[Feedback on this web site](#)

[Automated retrievals](#)

[Help](#)

[Data Tips](#)

[Explanation of terms](#)

[Subscribe for system changes](#)

[News](#)

[Accessibility](#)

[Plug-Ins](#)

[FOIA](#)

[Privacy](#)

[Policies and Notices](#)

[U.S. Department of the Interior](#) | [U.S. Geological Survey](#)

Title: Groundwater for USA: Water Levels

URL: <https://nwis.waterdata.usgs.gov/nwis/gwlevels?>



Page Contact Information: [USGS Water Data Support Team](#)

Page Last Modified: 2017-12-15 09:03:05 EST

1.01 0.9 nadww01

Appendix D

Form C-141 Initial

District I
1625 N. French Dr., Hobbs, NM 88240
District II
811 S. First St., Artesia, NM 88210
District III
1000 Rio Brazos Road, Aztec, NM 87410
District IV
1220 S. St. Francis Dr., Santa Fe, NM 87505

State of New Mexico
Energy Minerals and Natural Resources

Oil Conservation Division
1220 South St. Francis Dr.
Santa Fe, NM 87505

Form C-141
Revised August 8, 2011

Submit 1 Copy to appropriate District Office in
accordance with 19.15.29 NMAC.

Release Notification and Corrective Action

OPERATOR

☒ Initial Report ☒ Final Report

| | | |
|------------------------------------------|-------------------------------|-------------------------|
| Name of Company EOG Y Resources, Inc. | OGRID Number 25575 | Contact Robert Asher |
| Address 104 S. 4 th Street | Telephone No. 575-748-1471 | |
| Facility Name Waylon BMD State #8 | Facility Type Battery | |

| | | |
|------------------------|------------------------|-------------------------|
| Surface Owner State | Mineral Owner State | API No. 30-005-38256 |
|------------------------|------------------------|-------------------------|

LOCATION OF RELEASE

| | | | | | | | | |
|------------------|---------------|-----------------|--------------|----------------------|---------------------------|-----------------------|------------------------|---------------|
| Unit Letter C | Section 14 | Township 11S | Range 34E | Feet from the 660 | North/South Line North | Feet from the 2310 | East/West Line West | County Lea |
|------------------|---------------|-----------------|--------------|----------------------|---------------------------|-----------------------|------------------------|---------------|

Latitude 33.3712234 Longitude 103.4824219

NATURE OF RELEASE

| | | |
|------------------------------------------------------------------------------------------------------------------------------------------|-----------------------------------------------|----------------------------------------------|
| Type of Release Oil | Volume of Release 5 B/O | Volume Recovered 4.5 B/O |
| Source of Release Production Tank | Date and Hour of Occurrence 11/25/2017; PM | Date and Hour of Discovery 11/25/2017; PM |
| Was Immediate Notice Given? <input type="checkbox"/> Yes <input type="checkbox"/> No <input checked="" type="checkbox"/> Not Required | If YES, To Whom? N/A | |
| By Whom? N/A | Date and Hour N/A | |
| Was a Watercourse Reached? <input type="checkbox"/> Yes <input checked="" type="checkbox"/> No | If YES, Volume Impacting the Watercourse. | |

If a Watercourse was Impacted, Describe Fully.*

Describe Cause of Problem and Remedial Action Taken.*

Pumper drained water from oil tank to water tank. Left valve open to long causing to much fluid to equalize over. Causing water tank to run over. Vacuum truck(s) and roustabout/backhoe crews were called.

Describe Area Affected and Cleanup Action Taken.*

An approximate area of 10'X 30', this battery is bermed and has a synthetic liner. Vacuum truck recovered 4.5 B/O, remaining 0.5 B/O entrained within gravel material on top of liner. Roustabout crews removed impacted gravel, that gravel was disposed at an NMOCD approved facility. EOG Y will inspect liner and attest to liner integrity. **Depth to Ground Water: <50' (approximately 33.85', per NMOSE & USGS Groundwater Levels), Wellhead Protection Area: No, Distance to Surface Water Body: >1000', SITE RANKING IS 20. Based off of the liner inspection/enclosed photos, EOG Y requests closure.**

I hereby certify that the information given above is true and complete to the best of my knowledge and understand that pursuant to NMOCD rules and regulations all operators are required to report and/or file certain release notifications and perform corrective actions for releases which may endanger public health or the environment. The acceptance of a C-141 report by the NMOCD marked as "Final Report" does not relieve the operator of liability should their operations have failed to adequately investigate and remediate contamination that pose a threat to ground water, surface water, human health or the environment. In addition, NMOCD acceptance of a C-141 report does not relieve the operator of responsibility for compliance with any other federal, state, or local laws and/or regulations.

| | | |
|------------------------------------------------------------------------------------------------|---------------------------------------|-----------------------------------|
| Signature:  | OIL CONSERVATION DIVISION | |
| Printed Name: Robert Asher | Approved by Environmental Specialist: | |
| Title: Environmental Supervisor | Approval Date: | Expiration Date: |
| E-mail Address: Robert_Asher@eogresources.com | Conditions of Approval: | Attached <input type="checkbox"/> |
| Date: December 15, 2017 | Phone: 575-748-4217 | 1RP- |

* Attach Additional Sheets If Necessary

District I
1625 N. French Dr., Hobbs, NM 88240
District II
811 S. First St., Artesia, NM 88210
District III
1000 Rio Brazos Road, Aztec, NM 87410
District IV
1220 S. St. Francis Dr., Santa Fe, NM 87505

State of New Mexico
Energy Minerals and Natural Resources

Oil Conservation Division
1220 South St. Francis Dr.
Santa Fe, NM 87505

Form C-141
Revised August 8, 2011

Submit 1 Copy to appropriate District Office in
accordance with 19.15.29 NMAC.

Release Notification and Corrective Action

OPERATOR

☒ Initial Report ☒ Final Report

| | | |
|------------------------------------------|-----------------------|-------------------------------|
| Name of Company EOG Y Resources, Inc. | OGRID Number 25575 | Contact Robert Asher |
| Address 104 S. 4 th Street | | Telephone No. 575-748-1471 |
| Facility Name Waylon BMD State #8 | | Facility Type Battery |

| | | |
|------------------------|------------------------|--------------------------------|
| Surface Owner State | Mineral Owner State | API No. 30-025-38256 |
|------------------------|------------------------|--------------------------------|

LOCATION OF RELEASE

| | | | | | | | | |
|------------------|---------------|-----------------|--------------|----------------------|---------------------------|-----------------------|------------------------|---------------|
| Unit Letter C | Section 14 | Township 11S | Range 34E | Feet from the 660 | North/South Line North | Feet from the 2310 | East/West Line West | County Lea |
|------------------|---------------|-----------------|--------------|----------------------|---------------------------|-----------------------|------------------------|---------------|

Latitude 33.3712234 Longitude 103.4824219

NATURE OF RELEASE

| | | |
|------------------------------------------------------------------------------------------------------------------------------------------|-----------------------------------------------|----------------------------------------------|
| Type of Release Oil | Volume of Release 5 B/O | Volume Recovered 4.5 B/O |
| Source of Release Production Tank | Date and Hour of Occurrence 11/25/2017; PM | Date and Hour of Discovery 11/25/2017; PM |
| Was Immediate Notice Given? <input type="checkbox"/> Yes <input type="checkbox"/> No <input checked="" type="checkbox"/> Not Required | If YES, To Whom? N/A | |
| By Whom? N/A | Date and Hour N/A | |
| Was a Watercourse Reached? <input type="checkbox"/> Yes <input checked="" type="checkbox"/> No | If YES, Volume Impacting the Watercourse. | |

If a Watercourse was Impacted, Describe Fully.*

Describe Cause of Problem and Remedial Action Taken.*

Pumper drained water from oil tank to water tank. Left valve open to long causing to much fluid to equalize over. Causing water tank to run over. Vacuum truck(s) and roustabout/backhoe crews were called.



Describe Area Affected and Cleanup Action Taken.*

An approximate area of 10'X 30', this battery is bermed and has a synthetic liner. Vacuum truck recovered 4.5 B/O, remaining 0.5 B/O entrained within gravel material on top of liner. Roustabout crews removed impacted gravel, that gravel was disposed at an NMOCD approved facility. EOG Y will inspect liner and attest to liner integrity. Depth to Ground Water: <50' (approximately 33.85', per NMOSE & USGS Groundwater Levels), Wellhead Protection Area: No, Distance to Surface Water Body: >1000', SITE RANKING IS 20. Based off of the liner inspection/enclosed photos, EOG Y requests closure.

I hereby certify that the information given above is true and complete to the best of my knowledge and understand that pursuant to NMOCD rules and regulations all operators are required to report and/or file certain release notifications and perform corrective actions for releases which may endanger public health or the environment. The acceptance of a C-141 report by the NMOCD marked as "Final Report" does not relieve the operator of liability should their operations have failed to adequately investigate and remediate contamination that pose a threat to ground water, surface water, human health or the environment. In addition, NMOCD acceptance of a C-141 report does not relieve the operator of responsibility for compliance with any other federal, state, or local laws and/or regulations.

RECEIVED

By Olivia Yu at 2:00 pm, Dec 18, 2017

| | | |
|------------------------------------------------------------------------------------------------|--------------------------------------------------------------------------------------------------------------------------------------------------------------|-----------------------------------|
| Signature:  | OIL CONSERVATION DIVISION | |
| Printed Name: Robert Asher | Approved by Environmental Specialist:  | |
| Title: Environmental Supervisor | Approval Date: 12/18/2017 | Expiration Date: |
| E-mail Address: Robert.Asher@eogresources.com | Conditions of Approval: | Attached <input type="checkbox"/> |
| Date: December 15, 2017 Phone: 575-748-4217 | Please inspect liner in question. Provide NMOCD with a concise report of the inspection with affirmation the liner has and will continue to contain liquids. | nOY1735250845 |

Attach Additional Sheets If Necessary



Geog Y resources (575) 748-1471

MAYLON State Unit #8

660' FML & 2310' FML - NE/NW

Sec. 14 - T 11 S - R 34 E - Unit C

Lea Co. New Mexico

Lea. # V0-5305 - API #30-025-38256

AFE # 07-268-0

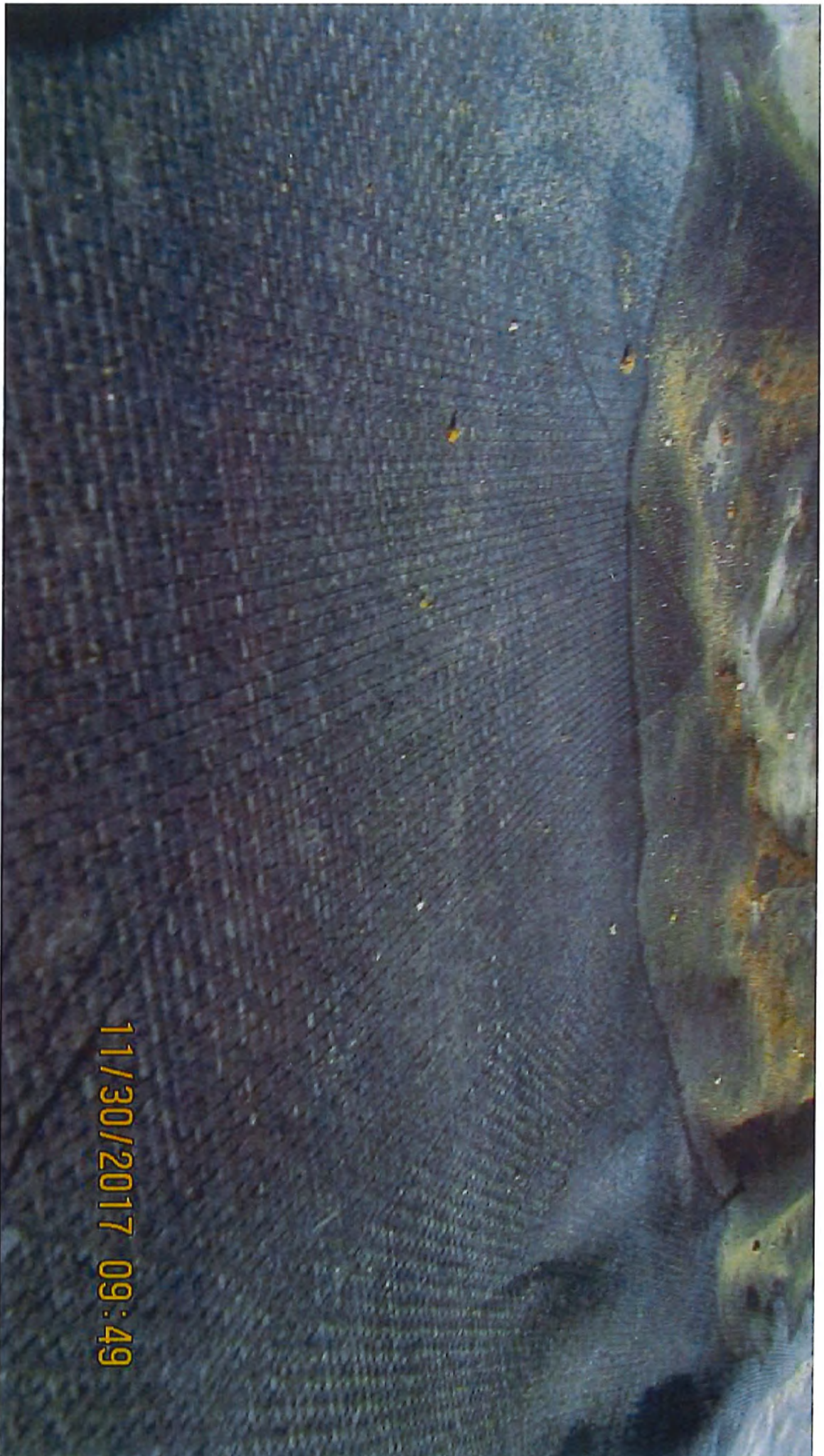
11/30/2017 09:47

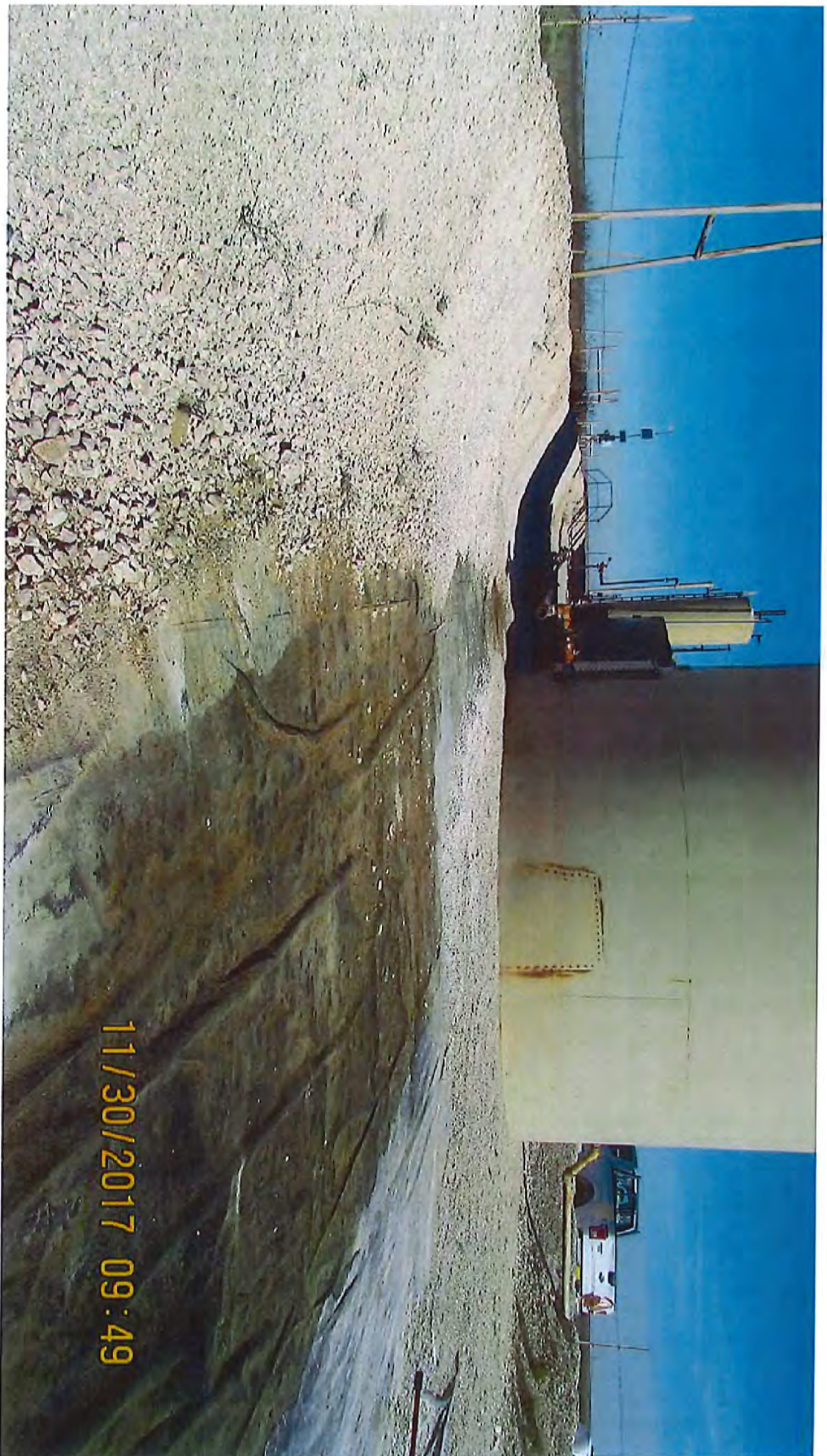


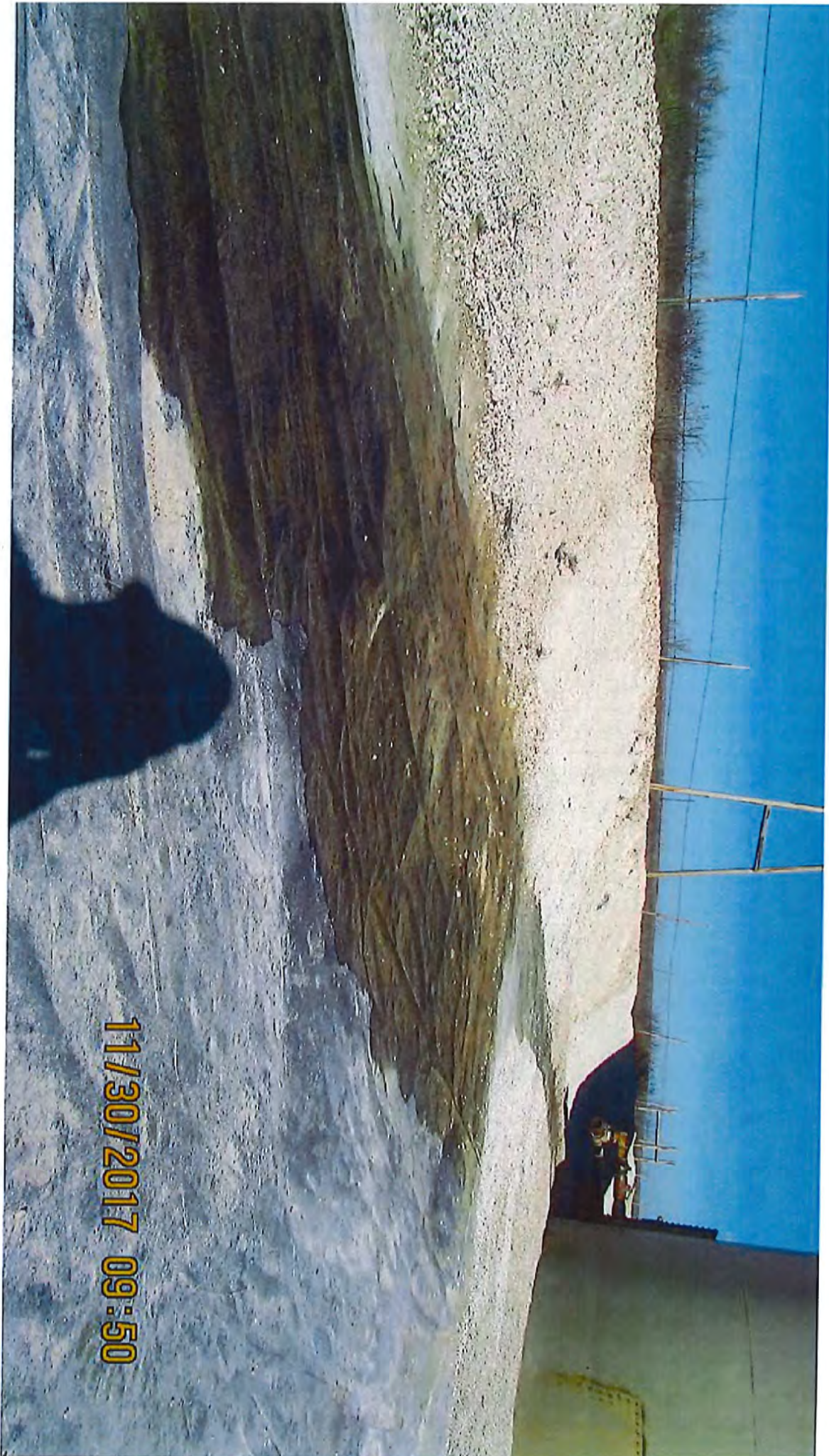
11/30/2017 09:48



11/30/2017 09:49







11/30/2017 09:50