

District I
1625 N. French Dr., Hobbs, NM 88240
Phone: (575) 393-6161 Fax: (575) 393-0720
District II
811 S. First St., Artesia, NM 88210
Phone: (575) 748-1283 Fax: (575) 748-9720
District III
1000 Rio Brazos Road, Aztec, NM 87410
Phone: (505) 334-6178 Fax: (505) 334-6170
District IV
1220 S. St. Francis Dr., Santa Fe, NM 87505
Phone: (505) 476-3460 Fax: (505) 476-3462

State of New Mexico
Energy, Minerals & Natural Resources
Department
OIL CONSERVATION DIVISION
1220 South St. Francis Dr.
Santa Fe, NM 87505

FORM C-102
Revised August 1, 2011
Submit one copy to appropriate
District Office

☐ AMENDED REPORT

WELL LOCATION AND ACREAGE DEDICATION PLAT

¹ API Number 30-025-45246	² Pool Code 33813	JAL;WOLFCAMP, WEST
³ Property Code 322647	⁵ Property Name NANDINA 25 36 31 FEDERAL COM	
⁷ GRID No. 372224	⁸ Operator Name AMEREDEV OPERATING, LLC.	⁶ Well Number 115H
		⁹ Elevation 3014'

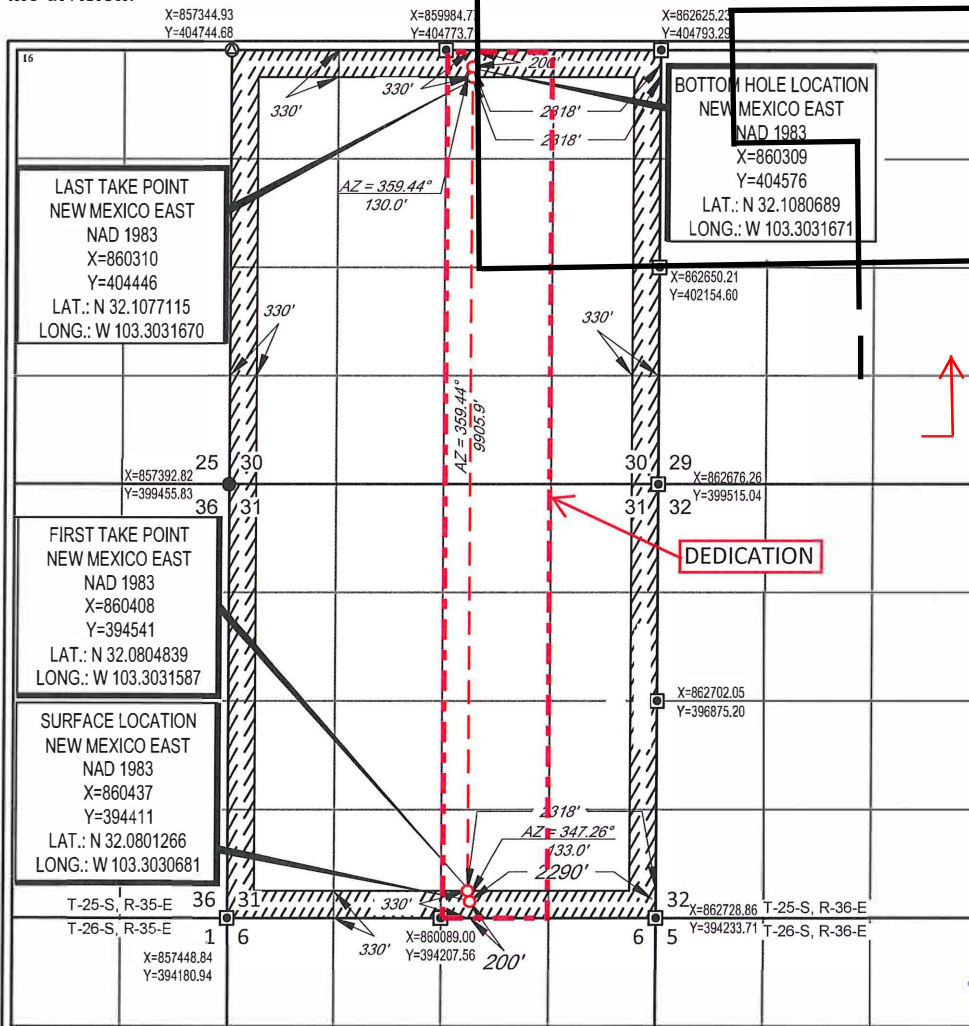
¹⁰Surface Location

UL or lot no.	Section	Township	Range	Lot Idn	Feet from the	North/South line	Feet from the	East/West line	County
0	31	25-S	36-E	-	200'	SOUTH	2290'	EAST	LEA

UL or lot no.	Section	Township	Range	Lot Idn	Feet from the	North/South line	Feet from the	East/West line	County
B	30	25-S	36-E	-	200'	NORTH	2318'	EAST	LEA

¹² Dedicated Acres 320	¹³ Joint or Infill	¹⁴ Consolidation Code C	¹⁵ Order No.
---	-------------------------------	--	-------------------------

No allowable will be assigned to this completion until all interests have been consolidated or a non-standard unit has been approved by the division.



¹⁷OPERATOR CERTIFICATION

I hereby certify that the information contained herein is true and complete to the best of my knowledge and belief, and that this organization either owns a working interest or undivided mineral interest in the land including the proposed bottom hole location or has a right to drill this well at this location pursuant to a contract with an owner of such a mineral or working interest, or to a voluntary pooling agreement or a compulsory pooling order heretofore entered by the division.

[Signature] **6/27/18**
Signature Date

Floyd Hammond
Printed Name

fhammond@ameredev.com
E-mail Address

¹⁸SURVEYOR CERTIFICATION

I hereby certify that the well location shown on this plat was plotted from field notes of actual surveys made by me or under my supervision, and that the same is true to the best of my belief.

05/09/2018
Date of Survey
Signature and Seal of Professional Surveyor

NEW MEXICO
19642
PROFESSIONAL SURVEYOR

[Signature]
Certificate Number