

District I
1625 N. French Dr., Hobbs, NM 88240
Phone: (575) 393-6161 Fax: (575) 393-0720
District II
811 S. First St., Artesia, NM 88210
Phone: (575) 748-1283 Fax: (575) 748-9720
District III
1000 Rio Brazos Road, Aztec, NM 87410
Phone: (505) 334-6178 Fax: (505) 334-6170
District IV
1220 S. St. Francis Dr., Santa Fe, NM 87505
Phone: (505) 476-3460 Fax: (505) 476-3462

State of New Mexico
Energy, Minerals & Natural Resources Department
OIL CONSERVATION DIVISION
1220 South St. Francis Dr.
Santa Fe, NM 87505

Form C-102
Revised August 1, 2011
Submit one copy to appropriate
District Office

☐ AMENDED REPORT

OCD - HOBBS
02/06/2019
RECEIVED

WELL LOCATION AND ACREAGE DEDICATION PLAT

¹ API Number 30-025-45557	² Pool Code 2220	³ Pool Name Antelope Ridge; Wolfcamp
⁴ Property Code 318027	⁵ Property Name ROMEO FEDERAL COM	⁶ Well Number 705H
⁷ OGRID No. 372165	⁸ Operator Name CENTENNIAL RESOURCE PRODUCTION, LLC	⁹ Elevation 3535.2'

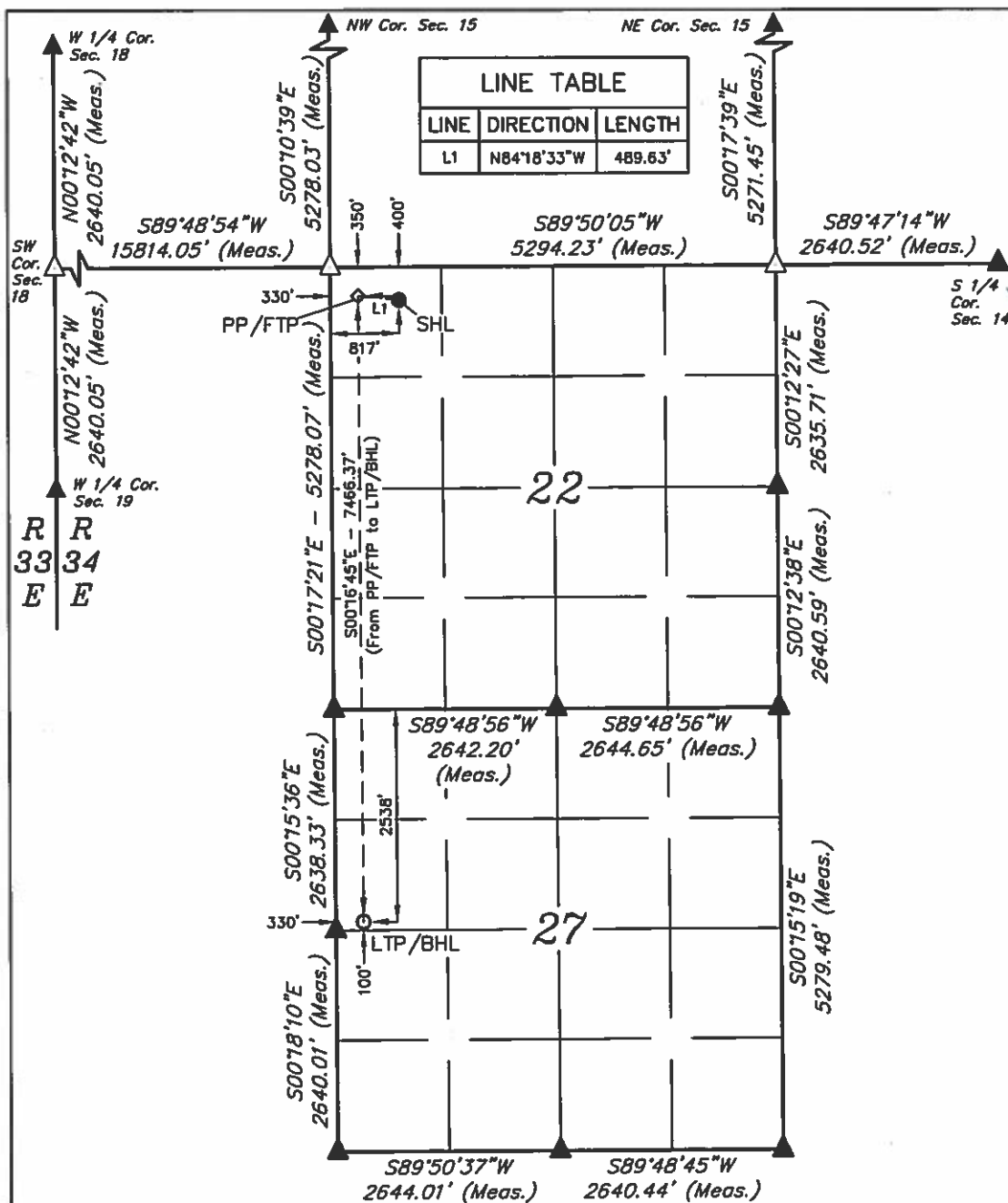
" Surface Location

UL or lot no. D	Section 22	Township 24S	Range 34E	Lot Idn	Feet from the 400	North/South line NORTH	Feet from the 817	East/West line WEST	County LEA
--------------------	---------------	-----------------	--------------	---------	----------------------	---------------------------	----------------------	------------------------	---------------

" Bottom Hole Location If Different From Surface

UL or lot no. E	Section 27	Township 24S	Range 34E	Lot Idn	Feet from the 2538	North/South line NORTH	Feet from the 330	East/West line WEST	County LEA
¹² Dedicated Acres 240	¹³ Joint or Infill	¹⁴ Consolidation Code	¹⁵ Order No.						

No allowable will be assigned to this completion until all interests have been consolidated or a non-standard unit has been approved by the division.



" OPERATOR
CERTIFICATION
I hereby certify that the information
contained herein is true and complete to
the best of my knowledge and belief, and
that this organization either owns a
working interest or unleased mineral
interest in the land including the proposed
bottom hole location or has a right to drill
this well at this location pursuant to a
contract with an owner of such a mineral
or working interest, or to a voluntary
pooling agreement or a compulsory
pooling order heretofore entered by the
division.
Signature: *Melissa Luke* Date: 2/6/18
Printed Name: Melissa Luke
melissa.luke@cdevinc.com
E-mail Address

" SURVEYOR
CERTIFICATION
I hereby certify that the well location shown
on this plat was plotted from field notes of
actual surveys made by me or under my
supervision, and that the same is true and
correct to the best of my belief.
February 13, 2018
Date of Survey
Signature and Seal of Professional
Surveyor:
PAUL BUCHELE
NEW MEXICO
23782
06-08-18
PROFESSIONAL SURVEYOR
Certificate Number:

NAD 83 (SURFACE HOLE LOCATION) LATITUDE = 32°12'33.09" (32.209192°) LONGITUDE = 103°27'49.50" (103.463749°) STATE PLANE NAD 83 (N.M. EAST) Y: 440926.12' X: 810289.05' UTM, NAD 83 (ZONE 13) Y: 11695049.42' X: 2115429.73'	NAD 83 (LTP/BHL) LATITUDE = 32°11'19.72" (32.188811°) LONGITUDE = 103°27'55.08" (103.465299°) STATE PLANE NAD 83 (N.M. EAST) Y: 433507.75' X: 809869.33' UTM, NAD 83 (ZONE 13) Y: 11687629.57' X: 2115056.09'
---	---

NAD 83 (PP/FTP) LATITUDE = 32°12'33.59" (32.209331°) LONGITUDE = 103°27'55.16" (103.465323°) STATE PLANE NAD 83 (N.M. EAST) Y: 440972.63' X: 809801.71' UTM, NAD 83 (ZONE 13) Y: 11695092.89' X: 2114942.19'	NOTE: • Distances referenced on plat to section lines are perpendicular • Basis of Bearing is a Transverse Mercator Projection with a Central Meridian of W103°53'00"
REV: 2 06-08-18 J.N. (BHL MOVE)	

SCALE
DRAWN BY: C.D. 03-22-18
● = SURFACE HOLE LOCATION
◇ = FIRST TAKE POINT
○ = LTP/BHL
△ = SECTION CORNER LOCATED
RE-ESTABLISHED.
(Not Set on Ground.)