

DISTRICT I  
1625 N. French Dr., Hobbs, NM 88240  
Phone: (575) 393-6161 Fax: (575) 393-0720

DISTRICT II  
811 S. First St., Artesia, NM 88210  
Phone: (575) 748-1283 Fax: (575) 748-0720

DISTRICT III  
1000 Rio Brazos Rd., Aztec, NM 87410  
Phone: (505) 334-6178 Fax: (505) 334-6170

DISTRICT IV  
1220 S. St. Francis Dr., Santa Fe, NM 87505  
Phone: (505) 476-3460 Fax: (505) 476-3462

State of New Mexico  
Energy, Minerals & Natural Resources Department

OIL CONSERVATION DIVISION  
1220 South St. Frances Dr.  
Santa Fe, NM 87505

Form C-102  
Revised August 1, 2011  
Submit one copy to appropriate  
District Office

**OCD - HOBBS**  
**02/11/2019**  
**RECEIVED**

☐ AMENDED REPORT

WELL LOCATION AND ACREAGE DEDICATION PLAT

API Number <b>30-025-45573</b>	Pool Code <b>98247</b>	Pool Name <b>WC-025 G-09 S203435D;WOLFCAMP</b>
Property Code <b>302802</b>	Property Name LEA UNIT	Well Number 101H
GRID No. <b>240974</b>	Operator Name LEGACY RESERVES OPERATING LP	Elevation 3665'

Surface Location

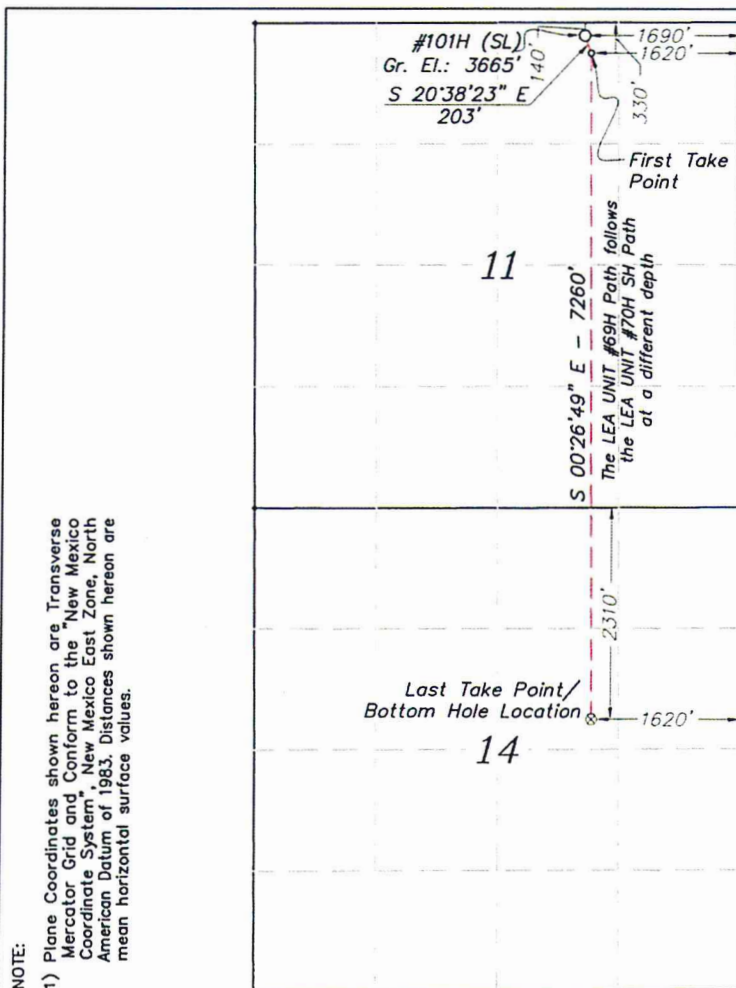
UL or lot No.	Section	Township	Range	Lot Idn	Feet from the	North/South line	Feet from the	East/West line	County
B	11	20 S	34 E		140	NORTH	1690	EAST	LEA

Bottom Hole Location If Different From Surface

UL or lot No.	Section	Township	Range	Lot Idn	Feet from the	North/South line	Feet from the	East/West line	County
G	14	20 S	34 E		2310	NORTH	1620	EAST	LEA

Dedicated Acres	Joint or Infill	Consolidation Code	Order No.
-----------------	-----------------	--------------------	-----------

NO ALLOWABLE WILL BE ASSIGNED TO THIS COMPLETION UNTIL ALL INTERESTS HAVE BEEN CONSOLIDATED OR A NON-STANDARD UNIT HAS BEEN APPROVED BY THE DIVISION



SURFACE LOCATION  
(NAD83)

Plane Coordinate  
X = 789,417.0  
Y = 580,949.2  
Geodetic (D.D.)  
32.59449991° N  
103.52781642° W

FIRST TAKE POINT  
(NAD83)

Plane Coordinate  
X = 789,488.5  
Y = 580,759.5  
Geodetic (D.D.)  
32.59397702° N  
103.52758909° W

BOTTOM HOLE LOCATION  
& LAST TAKE POINT  
(NAD83)

Plane Coordinate  
X = 789,545.1  
Y = 573,499.9  
Geodetic (D.D.)  
32.57402287° N  
103.52758372° W

OPERATOR CERTIFICATION

I hereby certify that the information contained herein is true and complete to the best of my knowledge and belief, and that this organization either owns a working interest or unleased mineral interest in the land including the proposed bottom hole location or has a right to drill this well at this location pursuant to a contract with an owner of such a mineral or working interest, or to a voluntary pooling agreement or a compulsory pooling order heretofore entered by the division.

*Sherry Morrow* 2/5/19  
Signature Date

Sherry Morrow  
Printed Name

smorrow@legacyreserves.com  
E-mail Address

SURVEYOR CERTIFICATION

I hereby certify that the well location shown on this plat was plotted from field notes of actual surveys made by me or under my supervision, and that the same is true and correct to the best of my belief.

December 20, 2017

Date of Survey

Signature & Seal of Professional Surveyor

*Lindsay Gyga*  
Lindsay Gyga  
Professional Surveyor  
23263

W.O. Num. 2017-0929 H

Certificate No. Lindsay Gyga 23263

Scale  
1" = 2000'