

District I
1625 N. French Dr., Hobbs, NM 88240
Phone: (575) 393-6161 Fax: (575) 393-0720
District II
811 S. First St., Artesia, NM 88210
Phone: (575) 748-1283 Fax: (575) 748-9720
District III
1000 Rio Brazos Road, Aztec, NM 87410
Phone: (505) 334-6178 Fax: (505) 334-6170
District IV
1220 S. St. Francis Dr., Santa Fe, NM 87505
Phone: (505) 476-3460 Fax: (505) 476-3462

State of New Mexico
Energy, Minerals & Natural Resources Department
OIL CONSERVATION DIVISION
1220 South St. Francis Dr.
Santa Fe, NM 87505

OCD - HOBBS
07/25/2019
RECEIVED

Form C-102
Revised August 1, 2011
Submit one copy to appropriate
District Office

☐ AMENDED REPORT

WELL LOCATION AND ACREAGE DEDICATION PLAT

¹ API Number 30-025-46263	² Pool Code 96660	³ Pool Name BERRY; BONE SPRING
⁴ Property Code 325985	⁵ Property Name REBEL 9/16 B2IP STATE COM	
⁷ GRID NO. 14744	⁸ Operator Name MEWBOURNE OIL COMPANY	⁶ Well Number 1H
		⁹ Elevation 3703'

¹⁰ Surface Location

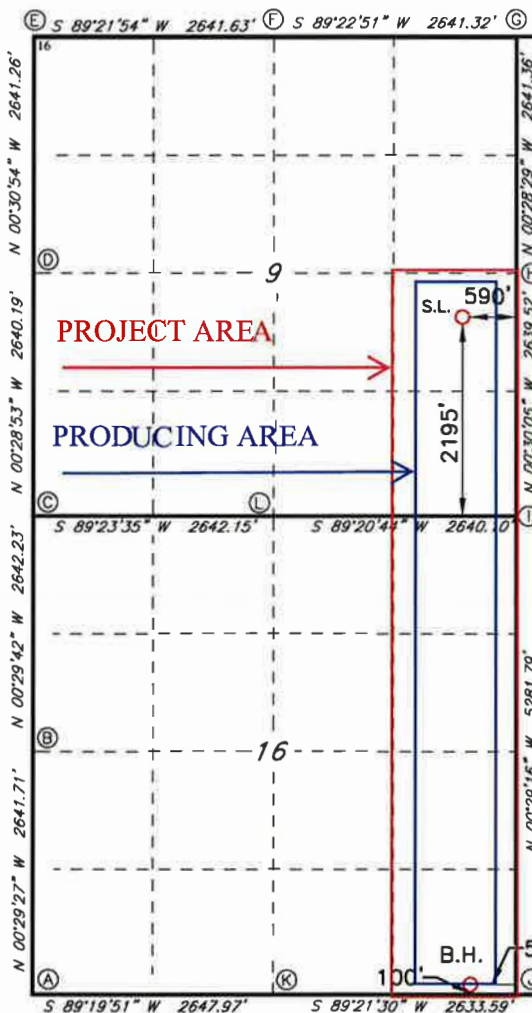
UL or lot no.	Section	Township	Range	Lot Idn	Feet from the	North/South line	Feet From the	East/West line	County
I	9	21S	34E		2195	SOUTH	590	EAST	LEA

¹¹ Bottom Hole Location If Different From Surface

UL or lot no.	Section	Township	Range	Lot Idn	Feet from the	North/South line	Feet from the	East/West line	County
P	16	21S	34E		100	SOUTH	500	EAST	LEA

¹² Dedicated Acres 240	¹³ Joint or Infill	¹⁴ Consolidation Code	¹⁵ Order No.
--------------------------------------	-------------------------------	----------------------------------	-------------------------

No allowable will be assigned to this completion until all interest have been consolidated or a non-standard unit has been approved by the division.



GEODETIC DATA
NAD 83 GRID - NM EAST

SURFACE LOCATION
N: 543878.7 - E: 808065.3

LAT: 32.4922106° N
LONG: 103.4682485° W

BOTTOM HOLE
N: 536504.4 - E: 808218.2

LAT: 32.4719389° N
LONG: 103.4679466° W

CORNER DATA
NAD 83 GRID - NM EAST

A: FOUND BRASS CAP "1913"
N: 536349.6 - E: 803438.7

B: FOUND BRASS CAP "1913"
N: 538990.6 - E: 803416.1

C: FOUND BRASS CAP "1913"
N: 541632.2 - E: 803393.3

D: FOUND IRON PIPE
N: 544271.9 - E: 803371.1

E: FOUND BRASS CAP "1913"
N: 546912.5 - E: 803347.3

F: FOUND BRASS CAP "1913"
N: 546941.8 - E: 805988.3

G: FOUND BRASS CAP "1913"
N: 546970.4 - E: 808629.0

H: FOUND BRASS CAP "1913"
N: 544329.6 - E: 808650.9

I: FOUND BRASS CAP "1913"
N: 541690.6 - E: 808674.0

J: FOUND BRASS CAP "1913"
N: 536410.0 - E: 808719.0

K: FOUND BRASS CAP "1913"
N: 536380.5 - E: 806086.0

L: FOUND BRASS CAP "1913"
N: 541660.5 - E: 806034.5

17 OPERATOR CERTIFICATION

I hereby certify that the information contained herein is true and complete to the best of my knowledge and belief, and that this organization either owns a working interest or unleased mineral interest in the land including the proposed bottom hole location or has a right to drill this well at this location pursuant to a contract with an owner of such a mineral or working interest, or to a voluntary pooling agreement or a compulsory pooling order heretofore entered by the division.

Signature: *Paul Hrebicek* Date: 7-18-19

Printed Name: PAUL HREBICEK

E-mail Address: PHREBICEK@MEWBOURNE.COM

18 SURVEYOR CERTIFICATION

I hereby certify that the well location shown on this plat was plotted from field notes of actual surveys made by me or under my supervision, and that the same is true and correct to the best of my belief.

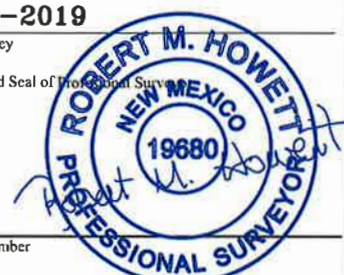
3-20-2019

Date of Survey

Signature and Seal of Professional Surveyor

19680

Certificate Number



Job No.: LS19010071