



OCD - HOBBS  
09/12/2019  
RECEIVED

## **EOG Resources - Midland**

Lea County, NM (NAD 83 NME)

Bandit 32 State Com

#706H

OH

Plan: Plan #0.2

## **Standard Planning Report**

11 September, 2019

Database:	EOG Resources - Midland
Company:	Lea County, NM (NAD 83 NME)
Project:	Bandit 32 State Com
Well:	#706H
Wellbore:	OH
Design:	Plan #0.2
Local Co-ordinate Reference:	Well #706H
TVD Reference:	KB = 25 @ 3560.0ustf
MD Reference:	KB = 25 @ 3560.0ustf
North Reference:	Gnd
Survey Calculation Method:	Minimum Curvature

Measured Depth (ustf)	Inclination (°)	Azimuth (°)	Vertical Depth (ustf)	+N/-S (ustf)	+E/-W (ustf)	Vertical Section (ustf)	Dogleg Rate (%/100ustf)	Build Rate (%/100ustf)	Turn Rate (%/100ustf)
0.0	0.00	0.00	0.00	0.00	0.00	0.00	0.00	0.00	0.00
100.0	0.00	0.00	100.0	0.00	0.00	0.00	0.00	0.00	0.00
200.0	0.00	0.00	200.0	0.00	0.00	0.00	0.00	0.00	0.00
300.0	0.00	0.00	300.0	0.00	0.00	0.00	0.00	0.00	0.00
400.0	0.00	0.00	400.0	0.00	0.00	0.00	0.00	0.00	0.00
500.0	0.00	0.00	500.0	0.00	0.00	0.00	0.00	0.00	0.00
600.0	0.00	0.00	600.0	0.00	0.00	0.00	0.00	0.00	0.00
700.0	0.00	0.00	700.0	0.00	0.00	0.00	0.00	0.00	0.00
800.0	0.00	0.00	800.0	0.00	0.00	0.00	0.00	0.00	0.00
900.0	0.00	0.00	900.0	0.00	0.00	0.00	0.00	0.00	0.00
1,000.0	0.00	0.00	1,000.0	0.00	0.00	0.00	0.00	0.00	0.00
1,100.0	0.00	0.00	1,100.0	0.00	0.00	0.00	0.00	0.00	0.00
1,200.0	0.00	0.00	1,200.0	0.00	0.00	0.00	0.00	0.00	0.00
1,300.0	0.00	0.00	1,300.0	0.00	0.00	0.00	0.00	0.00	0.00
1,400.0	2.00	143.54	1,400.0	-1.4	1.0	2.1	-2.9	2.00	0.00
1,443.6	2.87	143.54	1,443.5	-2.9	2.1	2.1	-2.9	2.00	0.00
1,500.0	2.87	143.54	1,499.9	-5.2	3.8	3.8	-5.1	0.00	0.00
1,600.0	2.87	143.54	1,599.7	-9.2	6.8	6.8	-9.1	0.00	0.00
1,700.0	2.87	143.54	1,699.6	-13.2	9.8	12.8	-17.0	0.00	0.00
1,800.0	2.87	143.54	1,799.5	-17.3	9.8	12.8	-17.0	0.00	0.00
1,900.0	2.87	143.54	1,899.4	-21.3	15.7	15.7	-21.0	0.00	0.00
2,000.0	2.87	143.54	1,999.2	-25.3	18.7	18.7	-25.0	0.00	0.00
2,100.0	2.87	143.54	2,099.1	-29.3	21.7	21.7	-29.0	0.00	0.00
2,200.0	2.87	143.54	2,199.0	-33.4	24.7	24.7	-33.0	0.00	0.00
2,300.0	2.87	143.54	2,298.9	-37.4	27.6	27.6	-36.9	0.00	0.00
2,400.0	2.87	143.54	2,398.7	-41.4	30.6	30.6	-40.9	0.00	0.00
2,500.0	2.87	143.54	2,498.6	-45.5	33.6	33.6	-44.9	0.00	0.00
2,600.0	2.87	143.54	2,598.5	-49.5	36.6	36.6	-48.9	0.00	0.00
2,700.0	2.87	143.54	2,698.4	-53.5	39.6	39.6	-52.9	0.00	0.00
2,800.0	2.87	143.54	2,798.2	-57.6	42.5	42.5	-56.8	0.00	0.00
2,900.0	2.87	143.54	2,898.1	-61.6	45.5	45.5	-60.8	0.00	0.00
3,000.0	2.87	143.54	2,998.0	-65.6	48.5	48.5	-64.8	0.00	0.00
3,100.0	2.87	143.54	3,097.9	-69.6	51.5	51.5	-68.8	0.00	0.00
3,200.0	2.87	143.54	3,197.7	-73.7	54.4	54.4	-72.8	0.00	0.00
3,300.0	2.87	143.54	3,297.6	-77.7	57.4	57.4	-76.7	0.00	0.00
3,400.0	2.87	143.54	3,397.5	-81.7	60.4	60.4	-80.7	0.00	0.00
3,500.0	2.87	143.54	3,497.4	-85.8	63.4	63.4	-84.7	0.00	0.00
3,600.0	2.87	143.54	3,597.2	-89.8	66.4	66.4	-88.7	0.00	0.00
3,700.0	2.87	143.54	3,697.1	-93.8	69.3	69.3	-92.7	0.00	0.00
3,800.0	2.87	143.54	3,797.0	-97.8	72.3	72.3	-96.6	0.00	0.00
3,900.0	2.87	143.54	3,896.9	-101.9	75.3	75.3	-100.6	0.00	0.00
4,000.0	2.87	143.54	3,996.7	-105.9	78.3	78.3	-104.6	0.00	0.00
4,100.0	2.87	143.54	4,096.6	-109.9	81.2	81.2	-108.6	0.00	0.00
4,200.0	2.87	143.54	4,196.5	-114.0	84.2	84.2	-112.6	0.00	0.00
4,300.0	2.87	143.54	4,296.4	-118.0	87.2	87.2	-116.5	0.00	0.00
4,400.0	2.87	143.54	4,396.2	-122.0	90.2	90.2	-120.5	0.00	0.00
4,500.0	2.87	143.54	4,496.1	-126.1	93.2	93.2	-124.5	0.00	0.00
4,600.0	2.87	143.54	4,596.0	-130.1	96.1	96.1	-128.5	0.00	0.00
4,700.0	2.87	143.54	4,695.8	-134.1	99.1	99.1	-132.5	0.00	0.00
4,800.0	2.87	143.54	4,795.7	-138.1	102.1	102.1	-136.4	0.00	0.00
4,900.0	2.87	143.54	4,895.6	-142.2	105.1	105.1	-140.4	0.00	0.00
5,000.0	2.87	143.54	4,995.5	-146.2	108.0	108.0	-144.4	0.00	0.00
5,100.0	2.87	143.54	5,095.3	-150.2	111.0	111.0	-148.4	0.00	0.00
5,200.0	2.87	143.54	5,195.2	-154.3	114.0	114.0	-152.3	0.00	0.00

Database:	EDM 5000.14	Local Co-ordinate Reference:	Well #706H
Company:	EOG Resources - Midland	TVD Reference:	KB = 25 @ 3560.0usft
Project:	Lea County, NM (NAD 83 NME)	MD Reference:	KB = 25 @ 3560.0usft
Site:	Bandit 32 State Com	North Reference:	Grid
Well:	#706H	Survey Calculation Method:	Minimum Curvature
Wellbore:	OH		
Design:	Plan #0.2		

## Planned Survey

Measured Depth (usft)	Inclination (°)	Azimuth (°)	Vertical Depth (usft)	+N/-S (usft)	+E/-W (usft)	Vertical Section (usft)	Dogleg Rate (°/100usft)	Build Rate (°/100usft)	Turn Rate (°/100usft)
10,500.0	0.00	0.00	10,492.3	-249.0	184.0	-245.9	0.00	0.00	0.00
10,600.0	0.00	0.00	10,592.3	-249.0	184.0	-245.9	0.00	0.00	0.00
10,700.0	0.00	0.00	10,692.3	-249.0	184.0	-245.9	0.00	0.00	0.00
10,800.0	0.00	0.00	10,792.3	-249.0	184.0	-245.9	0.00	0.00	0.00
10,900.0	0.00	0.00	10,892.3	-249.0	184.0	-245.9	0.00	0.00	0.00
11,000.0	0.00	0.00	10,992.3	-249.0	184.0	-245.9	0.00	0.00	0.00
11,100.0	0.00	0.00	11,092.3	-249.0	184.0	-245.9	0.00	0.00	0.00
11,200.0	0.00	0.00	11,192.3	-249.0	184.0	-245.9	0.00	0.00	0.00
11,300.0	0.00	0.00	11,292.3	-249.0	184.0	-245.9	0.00	0.00	0.00
11,400.0	0.00	0.00	11,392.3	-249.0	184.0	-245.9	0.00	0.00	0.00
11,500.0	0.00	0.00	11,492.3	-249.0	184.0	-245.9	0.00	0.00	0.00
11,600.0	0.00	0.00	11,592.3	-249.0	184.0	-245.9	0.00	0.00	0.00
11,700.0	0.00	0.00	11,692.3	-249.0	184.0	-245.9	0.00	0.00	0.00
11,800.0	0.00	0.00	11,792.3	-249.0	184.0	-245.9	0.00	0.00	0.00
11,900.0	0.00	0.00	11,892.3	-249.0	184.0	-245.9	0.00	0.00	0.00
12,000.0	0.00	0.00	11,992.3	-249.0	184.0	-245.9	0.00	0.00	0.00
12,016.2	0.00	0.00	12,008.5	-249.0	184.0	-245.9	0.00	0.00	0.00
KOP(Bandit 29 St Com #706H)									
12,025.0	1.06	359.57	12,017.3	-248.9	184.0	-245.8	12.00	12.00	0.00
12,050.0	4.06	359.57	12,042.3	-247.8	184.0	-244.7	12.00	12.00	0.00
12,075.0	7.06	359.57	12,067.2	-245.4	184.0	-242.3	12.00	12.00	0.00
12,100.0	10.06	359.57	12,091.9	-241.7	183.9	-238.6	12.00	12.00	0.00
12,125.0	13.06	359.57	12,116.4	-236.7	183.9	-233.6	12.00	12.00	0.00
12,150.0	16.06	359.57	12,140.6	-230.4	183.9	-227.3	12.00	12.00	0.00
12,175.0	19.06	359.57	12,164.4	-222.8	183.8	-219.8	12.00	12.00	0.00
12,200.0	22.06	359.57	12,187.8	-214.1	183.7	-211.0	12.00	12.00	0.00
12,225.0	25.06	359.57	12,210.7	-204.1	183.7	-201.0	12.00	12.00	0.00
12,250.0	28.06	359.57	12,233.1	-192.9	183.6	-189.8	12.00	12.00	0.00
12,275.0	31.06	359.57	12,254.8	-180.6	183.5	-177.5	12.00	12.00	0.00
12,300.0	34.06	359.57	12,275.9	-167.1	183.4	-164.0	12.00	12.00	0.00
12,325.0	37.06	359.57	12,296.2	-152.6	183.3	-149.5	12.00	12.00	0.00
12,350.0	40.06	359.57	12,315.8	-137.0	183.1	-133.9	12.00	12.00	0.00
12,375.0	43.06	359.57	12,334.5	-120.4	183.0	-117.4	12.00	12.00	0.00
12,400.0	46.06	359.57	12,352.3	-102.9	182.9	-99.8	12.00	12.00	0.00
12,419.3	48.37	359.57	12,365.4	-88.7	182.8	-85.7	12.00	12.00	0.00
FTP(Bandit 29 St Com #706H)									
12,425.0	49.06	359.57	12,369.2	-84.4	182.8	-81.4	12.00	12.00	0.00
12,450.0	52.06	359.57	12,385.0	-65.1	182.6	-62.1	12.00	12.00	0.00
12,475.0	55.06	359.57	12,399.9	-45.0	182.5	-42.0	12.00	12.00	0.00
12,500.0	58.06	359.57	12,413.7	-24.2	182.3	-21.1	12.00	12.00	0.00
12,525.0	61.06	359.57	12,426.3	-2.6	182.1	0.4	12.00	12.00	0.00
12,550.0	64.06	359.57	12,437.8	19.6	182.0	22.6	12.00	12.00	0.00
12,575.0	67.06	359.57	12,448.2	42.3	181.8	45.3	12.00	12.00	0.00
12,600.0	70.06	359.57	12,457.3	65.6	181.6	68.6	12.00	12.00	0.00
12,625.0	73.06	359.57	12,465.2	89.3	181.4	92.3	12.00	12.00	0.00
12,650.0	76.06	359.57	12,471.9	113.4	181.2	116.4	12.00	12.00	0.00
12,675.0	79.06	359.57	12,477.3	137.8	181.1	140.8	12.00	12.00	0.00
12,700.0	82.06	359.57	12,481.4	162.5	180.9	165.4	12.00	12.00	0.00
12,725.0	85.06	359.57	12,484.2	187.3	180.7	190.3	12.00	12.00	0.00
12,750.0	88.06	359.57	12,485.7	212.3	180.5	215.2	12.00	12.00	0.00
12,766.2	90.00	359.57	12,486.0	228.4	180.4	231.4	12.00	12.00	0.00
12,800.0	90.00	359.57	12,486.0	262.2	180.1	265.2	0.00	0.00	0.00
12,900.0	90.00	359.57	12,486.0	362.2	179.4	365.2	0.00	0.00	0.00
13,000.0	90.00	359.57	12,486.0	462.2	178.6	465.1	0.00	0.00	0.00

Database:	EDM 5000.14	Local Co-ordinate Reference:	Well #706H
Company:	EOG Resources - Midland	TVD Reference:	KB = 25' @ 3560.0usft
Project:	Lea County, NM (NAD 83 NME)	MD Reference:	KB = 25' @ 3560.0usft
Site:	Bandit 32 State Corn	North Reference:	Grid
Well:	#706H	Survey Calculation Method:	Minimum Curvature
Wellbore:	OH		
Design:	Plan #0.2		

Planned Survey										
Measured Depth (usft)	Inclination (°)	Azimuth (°)	Vertical Depth (usft)	+N/-S (usft)	+E/-W (usft)	Vertical Section (usft)	Dogleg Rate (°/100usft)	Build Rate (°/100usft)	Turn Rate (°/100usft)	
18,500.0	90.00	359.57	12,486.0	5,962.1	136.8	5,963.5	0.00	0.00	0.00	
18,600.0	90.00	359.57	12,486.0	6,062.1	136.1	6,063.5	0.00	0.00	0.00	
18,700.0	90.00	359.57	12,486.0	6,162.1	135.3	6,163.5	0.00	0.00	0.00	
18,800.0	90.00	359.57	12,486.0	6,262.1	134.6	6,263.4	0.00	0.00	0.00	
18,900.0	90.00	359.57	12,486.0	6,362.1	133.8	6,363.4	0.00	0.00	0.00	
19,000.0	90.00	359.57	12,486.0	6,462.1	133.0	6,463.4	0.00	0.00	0.00	
19,100.0	90.00	359.57	12,486.0	6,562.1	132.3	6,563.4	0.00	0.00	0.00	
19,200.0	90.00	359.57	12,486.0	6,662.1	131.5	6,663.3	0.00	0.00	0.00	
19,300.0	90.00	359.57	12,486.0	6,762.1	130.8	6,763.3	0.00	0.00	0.00	
19,400.0	90.00	359.57	12,486.0	6,862.1	130.0	6,863.3	0.00	0.00	0.00	
19,500.0	90.00	359.57	12,486.0	6,962.1	129.3	6,963.2	0.00	0.00	0.00	
19,600.0	90.00	359.57	12,486.0	7,062.1	128.5	7,063.2	0.00	0.00	0.00	
19,700.0	90.00	359.57	12,486.0	7,162.0	127.7	7,163.2	0.00	0.00	0.00	
19,800.0	90.00	359.57	12,486.0	7,262.0	127.0	7,263.2	0.00	0.00	0.00	
19,900.0	90.00	359.57	12,486.0	7,362.0	126.2	7,363.1	0.00	0.00	0.00	
20,000.0	90.00	359.57	12,486.0	7,462.0	125.5	7,463.1	0.00	0.00	0.00	
20,060.0	90.00	359.57	12,486.0	7,522.0	125.0	7,523.0	0.00	0.00	0.00	
PBHL(Bandit 29 St Com #706H)										

Design Targets										
Target Name	Dip Angle (°)	Dip Dir. (°)	TVD (usft)	+N/-S (usft)	+E/-W (usft)	Northing (usft)	Easting (usft)	Latitude	Longitude	
KOP(Bandit 29 St Com # - plan hits target center - Point	0.00	0.00	12,008.5	-249.0	184.0	427,913.00	768,985.00	32° 10' 27.376 N	103° 35' 51.259 W	
FTP(Bandit 29 St Com # - plan misses target center by 163.4usft at 12419.3usft MD (12365.4 TVD, -88.7 N, 182.8 E) - Point	0.00	0.00	12,486.0	-199.0	184.0	427,963.00	768,985.00	32° 10' 27.871 N	103° 35' 51.255 W	
PBHL(Bandit 29 St Com - plan hits target center - Point	0.00	0.00	12,486.0	7,522.0	125.0	435,684.00	768,926.00	32° 11' 44.276 N	103° 35' 51.327 W	



Lea County, NM (NAD 83 NME)

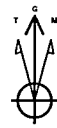
Bandit 32 State Com

#706H

Plan #0.2

PROJECT DETAILS: Lea County, NM (NAD 83 NME)

Geodetic System: US State Plane 1983  
Datum: North American Datum 1983  
Ellipsoid: GRS 1980  
Zone: New Mexico Eastern Zone  
System Datum: Mean Sea Level



Azimuths to Grid North  
True North: -0.39°  
Magnetic North: 6.38°  
Magnetic Field  
Strength: 47727.45nT  
Dip Angle: 55.99°  
Date: 3/12/2019  
Model: IGRF2015

To convert a Magnetic Direction to a Grid Direction, Add 6.38°  
To convert a Magnetic Direction to a True Direction, Add 6.77° East  
To convert a True Direction to a Grid Direction, Subtract 0.38°

WELL DETAILS: #706H

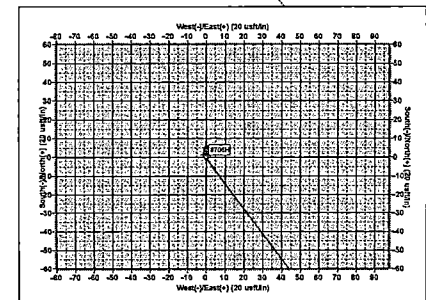
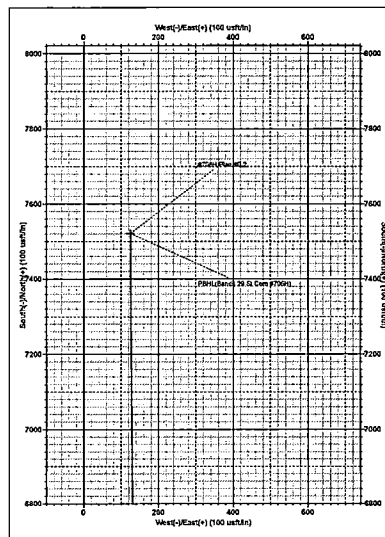
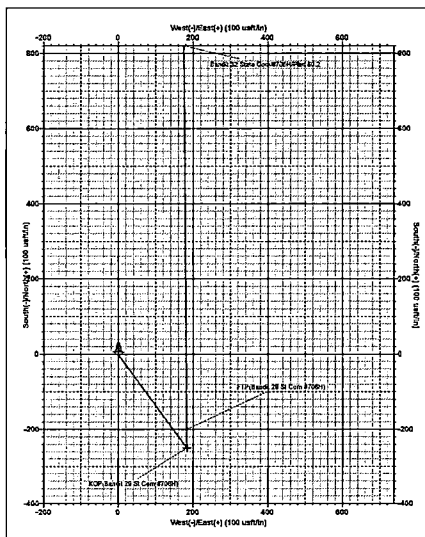
3504.0  
KB = 25 @ 3560.0usft  
+N/-S +E/-W Northing Easting Longitude Slot  
0.0 0.0 428162.00 768801.00 32° 10' 29.852 N 103° 35' 53.380 W

SECTION DETAILS

Sec	MD	Inc	Azi	TVD	+N/-S	+E/-W	Dleg	TFace	VFace	Target
1	0.0	0.00	0.00	0.0	0.0	0.0	0.00	0.00	0.0	
2	1300.0	0.00	0.00	1300.0	0.0	0.0	0.00	0.00	0.0	
3	1443.6	2.87	143.54	1443.5	-2.9	2.1	2.00	143.54	-2.9	
4	7479.1	2.87	143.54	7471.5	-246.1	181.9	0.00	0.00	-243.1	
5	7622.7	0.00	0.00	7615.0	-249.0	184.0	2.00	180.00	-245.9	
6	12016.2	0.00	0.00	12008.5	-249.0	184.0	0.00	0.00	-245.9	KOP(Bandit 29 St Com #706H)
7	12766.2	90.00	359.56	12486.0	228.4	180.4	12.00	359.56	231.4	
8	20060.0	90.00	359.56	12486.0	7522.0	125.0	0.00	0.00	7523.0	PBHL(Bandit 29 St Com #706H)

WELLBORE TARGET DETAILS (MAP CO-ORDINATES)

Name	TVD	+N/-S	+E/-W	Northing	Easting	Shape
KOP(Bandit 29 St Com #706H)	12008.5	-249.0	184.0	427913.00	768985.00	Point
FTP(Bandit 29 St Com #706H)	12486.0	-189.0	184.0	427953.00	768985.00	Point
PBHL(Bandit 29 St Com #706H)	12486.0	7522.0	125.0	435684.00	768925.00	Point



MAP COORDINATES (NAD 83)  
Datum: North American Datum 1983  
Zone: New Mexico Eastern Zone  
System Datum: Mean Sea Level