



OCD - HOBBS  
09/12/2019  
RECEIVED

## **EOG Resources - Midland**

Lea County, NM (NAD 83 NME)

Bandit 32 State Com

#708H

OH

Plan: Plan #0.1

## **Standard Planning Report**

11 September, 2019

Database:	EDM 5000.14	Local Co-ordinate Reference:	Well #708H
Company:	EOG Resources - Midland	TVD Reference:	KB = 25 @ 3531.0usft
Project:	Lea County, NM (NAD 83 NME)	MD Reference:	KB = 25 @ 3531.0usft
Site:	Bandit 32 State Com	North Reference:	Grid
Well:	#708H	Survey Calculation Method:	Minimum Curvature
Wellbore:	OH		
Design:	Plan #0.1		

Project:	Lea County, NM (NAD 83 NME)		
Map System:	US State Plane 1983	System Datum:	Mean Sea Level
Geo Datum:	North American Datum 1983		
Map Zone:	New Mexico Eastern Zone		

Site:	Bandit 32 State Com		
Site Position:		Northing:	428,162.00 usft
From:	Map	Easting:	768,801.00 usft
Position Uncertainty:	0.0 usft	Slot Radius:	13-3/16 "
		Latitude:	32° 10' 29.852 N
		Longitude:	103° 35' 53.380 W
		Grid Convergence:	0.39 °

Well:	#708H					
Well Position	+N-S	0.0 usft	Northing:	428,162.00 usft	Latitude:	32° 10' 29.857 N
	+E-W	-66.0 usft	Easting:	768,735.00 usft	Longitude:	103° 35' 54.148 W
Position Uncertainty		0.0 usft	Wellhead Elevation:		Ground Level:	3,506.0 usft

Wellbore:	OH				
Magnetics	Model Name	Sample Date	Declination (°)	Dip Angle (°)	Field Strength (nT)
	IGRF2015	3/12/2019	6.77	59.99	47,727.37481820

Design:	Plan #0.1			
Audit Notes:				
Version:	Phase:	PLAN	Tie On Depth:	0.0
Vertical Section:	Depth From (TVD)	+N-S	+E-W	Direction
	(usft)	(usft)	(usft)	(°)
	0.0	0.0	0.0	351.61

Plan Survey Tool Program	Date	9/11/2019		
Depth From	Depth To	Survey (Wellbore)	Tool Name	Remarks
(usft)	(usft)			
1	0.0	20,078.8 Plan #0.1 (OH)	MWD	
			OWSG MWD - Standard	

Plan Sections:										
Measured	Inclination	Azimuth	Vertical	+N-S	+E-W	Dogleg	Build	Turn	TFO	Target
Depth	(°)	(°)	Depth	(usft)	(usft)	Rate	Rate	Rate	(°)	
(usft)			(usft)			(°/100usft)	(°/100usft)	(°/100usft)		
0.0	0.00	0.00	0.0	0.0	0.0	0.00	0.00	0.00	0.00	
1,300.0	0.00	0.00	1,300.0	0.0	0.0	0.00	0.00	0.00	0.00	
1,597.2	5.94	256.30	1,596.7	-3.6	-15.0	2.00	2.00	0.00	256.30	
11,735.9	5.94	256.30	11,680.8	-252.4	-1,035.0	0.00	0.00	0.00	0.00	
12,033.1	0.00	0.00	11,977.5	-256.0	-1,050.0	2.00	-2.00	0.00	180.00	KOP(Bandit 29 St Cor
12,783.1	90.00	359.57	12,455.0	221.4	-1,053.6	12.00	12.00	-0.06	359.57	
20,078.8	90.00	359.57	12,455.0	7,517.0	-1,109.0	0.00	0.00	0.00	0.00	PBHL(Bandit 29 St Cor

Database:	EDM 5000.14	Local Co-ordinate Reference:	Well #708H
Company:	EOG Resources - Midland	TVD Reference:	KB = 25 @ 3531.0usft
Project:	Lea County, NM (NAD 83 NME)	MD Reference:	KB = 25 @ 3531.0usft
Site:	Bandit 32 State Com	North Reference:	Grid
Well:	#708H	Survey Calculation Method:	Minimum Curvature
Wellbore:	OH		
Design:	Plan #0.1		

Planned Survey									
Measured Depth (usft)	Inclination (°)	Azimuth (°)	Vertical Depth (usft)	+N/-S (usft)	+E/-W (usft)	Vertical Section (usft)	Dogleg Rate (°/100usft)	Build Rate (°/100usft)	Turn Rate (°/100usft)
0.0	0.00	0.00	0.0	0.0	0.0	0.0	0.00	0.00	0.00
100.0	0.00	0.00	100.0	0.0	0.0	0.0	0.00	0.00	0.00
200.0	0.00	0.00	200.0	0.0	0.0	0.0	0.00	0.00	0.00
300.0	0.00	0.00	300.0	0.0	0.0	0.0	0.00	0.00	0.00
400.0	0.00	0.00	400.0	0.0	0.0	0.0	0.00	0.00	0.00
500.0	0.00	0.00	500.0	0.0	0.0	0.0	0.00	0.00	0.00
600.0	0.00	0.00	600.0	0.0	0.0	0.0	0.00	0.00	0.00
700.0	0.00	0.00	700.0	0.0	0.0	0.0	0.00	0.00	0.00
800.0	0.00	0.00	800.0	0.0	0.0	0.0	0.00	0.00	0.00
900.0	0.00	0.00	900.0	0.0	0.0	0.0	0.00	0.00	0.00
1,000.0	0.00	0.00	1,000.0	0.0	0.0	0.0	0.00	0.00	0.00
1,100.0	0.00	0.00	1,100.0	0.0	0.0	0.0	0.00	0.00	0.00
1,200.0	0.00	0.00	1,200.0	0.0	0.0	0.0	0.00	0.00	0.00
1,300.0	0.00	0.00	1,300.0	0.0	0.0	0.0	0.00	0.00	0.00
1,400.0	2.00	256.30	1,400.0	-0.4	-1.7	-0.2	2.00	2.00	0.00
1,500.0	4.00	256.30	1,499.8	-1.7	-6.8	-0.6	2.00	2.00	0.00
1,597.2	5.94	256.30	1,596.7	-3.6	-15.0	-1.4	2.00	2.00	0.00
1,600.0	5.94	256.30	1,599.5	-3.7	-15.2	-1.5	0.00	0.00	0.00
1,700.0	5.94	256.30	1,698.9	-6.2	-25.3	-2.4	0.00	0.00	0.00
1,800.0	5.94	256.30	1,798.4	-8.6	-35.4	-3.4	0.00	0.00	0.00
1,900.0	5.94	256.30	1,897.8	-11.1	-45.4	-4.3	0.00	0.00	0.00
2,000.0	5.94	256.30	1,997.3	-13.5	-55.5	-5.3	0.00	0.00	0.00
2,100.0	5.94	256.30	2,096.8	-16.0	-65.6	-6.2	0.00	0.00	0.00
2,200.0	5.94	256.30	2,196.2	-18.4	-75.6	-7.2	0.00	0.00	0.00
2,300.0	5.94	256.30	2,295.7	-20.9	-85.7	-8.2	0.00	0.00	0.00
2,400.0	5.94	256.30	2,395.2	-23.3	-95.7	-9.1	0.00	0.00	0.00
2,500.0	5.94	256.30	2,494.6	-25.8	-105.8	-10.1	0.00	0.00	0.00
2,600.0	5.94	256.30	2,594.1	-28.2	-115.9	-11.0	0.00	0.00	0.00
2,700.0	5.94	256.30	2,693.5	-30.7	-125.9	-12.0	0.00	0.00	0.00
2,800.0	5.94	256.30	2,793.0	-33.2	-136.0	-13.0	0.00	0.00	0.00
2,900.0	5.94	256.30	2,892.5	-35.6	-146.0	-13.9	0.00	0.00	0.00
3,000.0	5.94	256.30	2,991.9	-38.1	-156.1	-14.9	0.00	0.00	0.00
3,100.0	5.94	256.30	3,091.4	-40.5	-166.2	-15.8	0.00	0.00	0.00
3,200.0	5.94	256.30	3,190.8	-43.0	-176.2	-16.8	0.00	0.00	0.00
3,300.0	5.94	256.30	3,290.3	-45.4	-186.3	-17.7	0.00	0.00	0.00
3,400.0	5.94	256.30	3,389.8	-47.9	-196.3	-18.7	0.00	0.00	0.00
3,500.0	5.94	256.30	3,489.2	-50.3	-206.4	-19.7	0.00	0.00	0.00
3,600.0	5.94	256.30	3,588.7	-52.8	-216.5	-20.6	0.00	0.00	0.00
3,700.0	5.94	256.30	3,688.2	-55.2	-226.5	-21.6	0.00	0.00	0.00
3,800.0	5.94	256.30	3,787.6	-57.7	-236.6	-22.5	0.00	0.00	0.00
3,900.0	5.94	256.30	3,887.1	-60.1	-246.7	-23.5	0.00	0.00	0.00
4,000.0	5.94	256.30	3,986.5	-62.6	-256.7	-24.5	0.00	0.00	0.00
4,100.0	5.94	256.30	4,086.0	-65.0	-266.8	-25.4	0.00	0.00	0.00
4,200.0	5.94	256.30	4,185.5	-67.5	-276.8	-26.4	0.00	0.00	0.00
4,300.0	5.94	256.30	4,284.9	-69.9	-286.9	-27.3	0.00	0.00	0.00
4,400.0	5.94	256.30	4,384.4	-72.4	-297.0	-28.3	0.00	0.00	0.00
4,500.0	5.94	256.30	4,483.9	-74.9	-307.0	-29.2	0.00	0.00	0.00
4,600.0	5.94	256.30	4,583.3	-77.3	-317.1	-30.2	0.00	0.00	0.00
4,700.0	5.94	256.30	4,682.8	-79.8	-327.1	-31.2	0.00	0.00	0.00
4,800.0	5.94	256.30	4,782.2	-82.2	-337.2	-32.1	0.00	0.00	0.00
4,900.0	5.94	256.30	4,881.7	-84.7	-347.3	-33.1	0.00	0.00	0.00
5,000.0	5.94	256.30	4,981.2	-87.1	-357.3	-34.0	0.00	0.00	0.00
5,100.0	5.94	256.30	5,080.6	-89.6	-367.4	-35.0	0.00	0.00	0.00
5,200.0	5.94	256.30	5,180.1	-92.0	-377.4	-36.0	0.00	0.00	0.00

Database:	EDM 5000.14	Local Co-ordinate Reference:	Well #708H
Company:	EOG Resources - Midland	TVD Reference:	KB = 25 @ 3531.0usft
Project:	Lea County, NM (NAD 83 NME)	MD Reference:	KB = 25 @ 3531.0usft
Site:	Bandit 32 State Corn	North Reference:	Grid
Well:	#708H	Survey Calculation Method:	Minimum Curvature
Wellbore:	OH		
Design:	Plan #0.1		

Planned Survey										
Measured Depth (usft)	Inclination (°)	Azimuth (°)	Vertical Depth (usft)	+N/-S (usft)	+E/-W (usft)	Vertical Section (usft)	Dogleg Rate (°/100usft)	Build Rate (°/100usft)	Turn Rate (°/100usft)	
5,300.0	5.94	256.30	5,279.6	-94.5	-387.5	-36.9	0.00	0.00	0.00	
5,400.0	5.94	256.30	5,379.0	-96.9	-397.6	-37.9	0.00	0.00	0.00	
5,500.0	5.94	256.30	5,478.5	-99.4	-407.6	-38.8	0.00	0.00	0.00	
5,600.0	5.94	256.30	5,577.9	-101.8	-417.7	-39.8	0.00	0.00	0.00	
5,700.0	5.94	256.30	5,677.4	-104.3	-427.8	-40.7	0.00	0.00	0.00	
5,800.0	5.94	256.30	5,776.9	-106.7	-437.8	-41.7	0.00	0.00	0.00	
5,900.0	5.94	256.30	5,876.3	-109.2	-447.9	-42.7	0.00	0.00	0.00	
6,000.0	5.94	256.30	5,975.8	-111.6	-457.9	-43.6	0.00	0.00	0.00	
6,100.0	5.94	256.30	6,075.3	-114.1	-468.0	-44.6	0.00	0.00	0.00	
6,200.0	5.94	256.30	6,174.7	-116.6	-478.1	-45.5	0.00	0.00	0.00	
6,300.0	5.94	256.30	6,274.2	-119.0	-488.1	-46.5	0.00	0.00	0.00	
6,400.0	5.94	256.30	6,373.6	-121.5	-498.2	-47.5	0.00	0.00	0.00	
6,500.0	5.94	256.30	6,473.1	-123.9	-508.2	-48.4	0.00	0.00	0.00	
6,600.0	5.94	256.30	6,572.6	-126.4	-518.3	-49.4	0.00	0.00	0.00	
6,700.0	5.94	256.30	6,672.0	-128.8	-528.4	-50.3	0.00	0.00	0.00	
6,800.0	5.94	256.30	6,771.5	-131.3	-538.4	-51.3	0.00	0.00	0.00	
6,900.0	5.94	256.30	6,871.0	-133.7	-548.5	-52.2	0.00	0.00	0.00	
7,000.0	5.94	256.30	6,970.4	-136.2	-558.6	-53.2	0.00	0.00	0.00	
7,100.0	5.94	256.30	7,069.9	-138.6	-568.6	-54.2	0.00	0.00	0.00	
7,200.0	5.94	256.30	7,169.3	-141.1	-578.7	-55.1	0.00	0.00	0.00	
7,300.0	5.94	256.30	7,268.8	-143.5	-588.7	-56.1	0.00	0.00	0.00	
7,400.0	5.94	256.30	7,368.3	-146.0	-598.8	-57.0	0.00	0.00	0.00	
7,500.0	5.94	256.30	7,467.7	-148.4	-608.9	-58.0	0.00	0.00	0.00	
7,600.0	5.94	256.30	7,567.2	-150.9	-618.9	-58.9	0.00	0.00	0.00	
7,700.0	5.94	256.30	7,666.7	-153.4	-629.0	-59.9	0.00	0.00	0.00	
7,800.0	5.94	256.30	7,766.1	-155.8	-639.0	-60.9	0.00	0.00	0.00	
7,900.0	5.94	256.30	7,865.6	-158.3	-649.1	-61.8	0.00	0.00	0.00	
8,000.0	5.94	256.30	7,965.0	-160.7	-659.2	-62.8	0.00	0.00	0.00	
8,100.0	5.94	256.30	8,064.5	-163.2	-669.2	-63.7	0.00	0.00	0.00	
8,200.0	5.94	256.30	8,164.0	-165.6	-679.3	-64.7	0.00	0.00	0.00	
8,300.0	5.94	256.30	8,263.4	-168.1	-689.3	-65.7	0.00	0.00	0.00	
8,400.0	5.94	256.30	8,362.9	-170.5	-699.4	-66.6	0.00	0.00	0.00	
8,500.0	5.94	256.30	8,462.4	-173.0	-709.5	-67.6	0.00	0.00	0.00	
8,600.0	5.94	256.30	8,561.8	-175.4	-719.5	-68.5	0.00	0.00	0.00	
8,700.0	5.94	256.30	8,661.3	-177.9	-729.6	-69.5	0.00	0.00	0.00	
8,800.0	5.94	256.30	8,760.7	-180.3	-739.7	-70.4	0.00	0.00	0.00	
8,900.0	5.94	256.30	8,860.2	-182.8	-749.7	-71.4	0.00	0.00	0.00	
9,000.0	5.94	256.30	8,959.7	-185.2	-759.8	-72.4	0.00	0.00	0.00	
9,100.0	5.94	256.30	9,059.1	-187.7	-769.8	-73.3	0.00	0.00	0.00	
9,200.0	5.94	256.30	9,158.6	-190.1	-779.9	-74.3	0.00	0.00	0.00	
9,300.0	5.94	256.30	9,258.1	-192.6	-790.0	-75.2	0.00	0.00	0.00	
9,400.0	5.94	256.30	9,357.5	-195.1	-800.0	-76.2	0.00	0.00	0.00	
9,500.0	5.94	256.30	9,457.0	-197.5	-810.1	-77.2	0.00	0.00	0.00	
9,600.0	5.94	256.30	9,556.4	-200.0	-820.1	-78.1	0.00	0.00	0.00	
9,700.0	5.94	256.30	9,655.9	-202.4	-830.2	-79.1	0.00	0.00	0.00	
9,800.0	5.94	256.30	9,755.4	-204.9	-840.3	-80.0	0.00	0.00	0.00	
9,900.0	5.94	256.30	9,854.8	-207.3	-850.3	-81.0	0.00	0.00	0.00	
10,000.0	5.94	256.30	9,954.3	-209.8	-860.4	-81.9	0.00	0.00	0.00	
10,100.0	5.94	256.30	10,053.8	-212.2	-870.4	-82.9	0.00	0.00	0.00	
10,200.0	5.94	256.30	10,153.2	-214.7	-880.5	-83.9	0.00	0.00	0.00	
10,300.0	5.94	256.30	10,252.7	-217.1	-890.6	-84.8	0.00	0.00	0.00	
10,400.0	5.94	256.30	10,352.1	-219.6	-900.6	-85.8	0.00	0.00	0.00	
10,500.0	5.94	256.30	10,451.6	-222.0	-910.7	-86.7	0.00	0.00	0.00	
10,600.0	5.94	256.30	10,551.1	-224.5	-920.8	-87.7	0.00	0.00	0.00	

Database:	EDM 5000.14	Local Co-ordinate Reference:	Well #708H
Company:	EOG Resources - Midland	TVD Reference:	KB = 25 @ 3531.0usft
Project:	Lea County, NM (NAD 83 NME)	MD Reference:	KB = 25 @ 3531.0usft
Site:	Bandit 32 State Com	North Reference:	Grid
Well:	#708H	Survey Calculation Method:	Minimum Curvature
Wellbore:	OH		
Design:	Plan #0.1		

Planned Survey									
Measured Depth (usft)	Inclination (°)	Azimuth (°)	Vertical Depth (usft)	+N/-S (usft)	+E/-W (usft)	Vertical Section (usft)	Dogleg Rate (°/100usft)	Build Rate (°/100usft)	Turn Rate (°/100usft)
10,700.0	5.94	256.30	10,650.5	-226.9	-930.8	-88.7	0.00	0.00	0.00
10,800.0	5.94	256.30	10,750.0	-229.4	-940.9	-89.6	0.00	0.00	0.00
10,900.0	5.94	256.30	10,849.4	-231.8	-950.9	-90.6	0.00	0.00	0.00
11,000.0	5.94	256.30	10,948.9	-234.3	-961.0	-91.5	0.00	0.00	0.00
11,100.0	5.94	256.30	11,048.4	-236.8	-971.1	-92.5	0.00	0.00	0.00
11,200.0	5.94	256.30	11,147.8	-239.2	-981.1	-93.4	0.00	0.00	0.00
11,300.0	5.94	256.30	11,247.3	-241.7	-991.2	-94.4	0.00	0.00	0.00
11,400.0	5.94	256.30	11,346.8	-244.1	-1,001.2	-95.4	0.00	0.00	0.00
11,500.0	5.94	256.30	11,446.2	-246.6	-1,011.3	-96.3	0.00	0.00	0.00
11,600.0	5.94	256.30	11,545.7	-249.0	-1,021.4	-97.3	0.00	0.00	0.00
11,700.0	5.94	256.30	11,645.1	-251.5	-1,031.4	-98.2	0.00	0.00	0.00
11,735.9	5.94	256.30	11,680.8	-252.4	-1,035.0	-98.6	0.00	0.00	0.00
11,800.0	4.66	256.30	11,744.7	-253.8	-1,040.8	-99.1	2.00	-2.00	0.00
11,900.0	2.66	256.30	11,844.5	-255.3	-1,047.0	-99.7	2.00	-2.00	0.00
12,000.0	0.66	256.30	11,944.4	-256.0	-1,049.8	-100.0	2.00	-2.00	0.00
12,033.1	0.00	0.00	11,977.5	-256.0	-1,050.0	-100.0	2.00	-2.00	0.00
KOP(Bandit 29 St Com #708H)									
12,050.0	2.03	359.57	11,994.4	-255.7	-1,050.0	-99.7	12.00	12.00	0.00
12,075.0	5.03	359.57	12,019.4	-254.2	-1,050.0	-98.2	12.00	12.00	0.00
12,100.0	8.03	359.57	12,044.2	-251.3	-1,050.0	-95.4	12.00	12.00	0.00
12,125.0	11.03	359.57	12,068.9	-247.2	-1,050.1	-91.3	12.00	12.00	0.00
12,150.0	14.03	359.57	12,093.3	-241.8	-1,050.1	-85.9	12.00	12.00	0.00
12,175.0	17.03	359.57	12,117.3	-235.1	-1,050.2	-79.3	12.00	12.00	0.00
12,200.0	20.03	359.57	12,141.0	-227.1	-1,050.2	-71.4	12.00	12.00	0.00
12,225.0	23.03	359.57	12,164.3	-217.9	-1,050.3	-62.3	12.00	12.00	0.00
12,250.0	26.03	359.57	12,187.0	-207.6	-1,050.4	-52.0	12.00	12.00	0.00
12,275.0	29.03	359.57	12,209.2	-196.0	-1,050.5	-40.6	12.00	12.00	0.00
12,300.0	32.03	359.57	12,230.7	-183.3	-1,050.6	-28.0	12.00	12.00	0.00
12,325.0	35.03	359.57	12,251.6	-169.5	-1,050.7	-14.3	12.00	12.00	0.00
12,350.0	38.03	359.57	12,271.7	-154.6	-1,050.8	0.4	12.00	12.00	0.00
12,375.0	41.03	359.57	12,290.9	-138.7	-1,050.9	16.1	12.00	12.00	0.00
12,400.0	44.03	359.57	12,309.4	-121.8	-1,051.0	32.9	12.00	12.00	0.00
12,425.0	47.03	359.57	12,326.9	-104.0	-1,051.2	50.5	12.00	12.00	0.00
12,433.4	48.04	359.57	12,332.5	-97.8	-1,051.2	56.7	12.00	12.00	0.00
FTP(Bandit 29 St Com #708H)									
12,450.0	50.03	359.57	12,343.4	-85.3	-1,051.3	69.1	12.00	12.00	0.00
12,475.0	53.03	359.57	12,359.0	-65.7	-1,051.4	88.5	12.00	12.00	0.00
12,500.0	56.03	359.57	12,373.5	-45.3	-1,051.6	108.6	12.00	12.00	0.00
12,525.0	59.03	359.57	12,386.9	-24.2	-1,051.8	129.5	12.00	12.00	0.00
12,550.0	62.03	359.57	12,399.2	-2.5	-1,051.9	151.1	12.00	12.00	0.00
12,575.0	65.03	359.57	12,410.3	19.9	-1,052.1	173.2	12.00	12.00	0.00
12,600.0	68.03	359.57	12,420.3	42.8	-1,052.3	196.0	12.00	12.00	0.00
12,625.0	71.03	359.57	12,429.0	66.2	-1,052.4	219.1	12.00	12.00	0.00
12,650.0	74.03	359.57	12,436.5	90.1	-1,052.6	242.8	12.00	12.00	0.00
12,675.0	77.03	359.57	12,442.8	114.3	-1,052.8	266.7	12.00	12.00	0.00
12,700.0	80.03	359.57	12,447.8	138.8	-1,053.0	291.0	12.00	12.00	0.00
12,725.0	83.03	359.57	12,451.4	163.5	-1,053.2	315.5	12.00	12.00	0.00
12,750.0	86.03	359.57	12,453.8	188.4	-1,053.4	340.1	12.00	12.00	0.00
12,775.0	89.03	359.57	12,454.9	213.4	-1,053.6	364.9	12.00	12.00	0.00
12,783.1	90.00	359.57	12,455.0	221.4	-1,053.6	372.9	12.00	12.00	0.00
12,800.0	90.00	359.57	12,455.0	238.4	-1,053.8	389.6	0.00	0.00	0.00
12,900.0	90.00	359.57	12,455.0	338.4	-1,054.5	488.7	0.00	0.00	0.00
13,000.0	90.00	359.57	12,455.0	438.4	-1,055.3	587.7	0.00	0.00	0.00
13,100.0	90.00	359.57	12,455.0	538.4	-1,056.0	686.7	0.00	0.00	0.00

Database:	EDM 5000.14	Local Co-ordinate Reference:	Well #708H
Company:	EOG Resources - Midland	TVD Reference:	KB = 25 @ 3531.0usft
Project:	Lea County, NM (NAD 83 NME)	MD Reference:	KB = 25 @ 3531.0usft
Site:	Bandit 32 State Com	North Reference:	Grid
Well:	#708H	Survey Calculation Method:	Minimum Curvature
Wellbore:	OH		
Design:	Plan #0.1		

Planned Survey									
Measured Depth (usft)	Inclination (°)	Azimuth (°)	Vertical Depth (usft)	+N/-S (usft)	+E/-W (usft)	Vertical Section (usft)	Dogleg Rate (°/100usft)	Build Rate (°/100usft)	Turn Rate (°/100usft)
13,200.0	90.00	359.57	12,455.0	638.4	-1,056.8	785.8	0.00	0.00	0.00
13,300.0	90.00	359.57	12,455.0	738.4	-1,057.5	884.8	0.00	0.00	0.00
13,400.0	90.00	359.57	12,455.0	838.4	-1,058.3	983.8	0.00	0.00	0.00
13,500.0	90.00	359.57	12,455.0	938.4	-1,059.1	1,082.9	0.00	0.00	0.00
13,600.0	90.00	359.57	12,455.0	1,038.3	-1,059.8	1,181.9	0.00	0.00	0.00
13,700.0	90.00	359.57	12,455.0	1,138.3	-1,060.6	1,281.0	0.00	0.00	0.00
13,800.0	90.00	359.57	12,455.0	1,238.3	-1,061.3	1,380.0	0.00	0.00	0.00
13,900.0	90.00	359.57	12,455.0	1,338.3	-1,062.1	1,479.0	0.00	0.00	0.00
14,000.0	90.00	359.57	12,455.0	1,438.3	-1,062.9	1,578.1	0.00	0.00	0.00
14,100.0	90.00	359.57	12,455.0	1,538.3	-1,063.6	1,677.1	0.00	0.00	0.00
14,200.0	90.00	359.57	12,455.0	1,638.3	-1,064.4	1,776.1	0.00	0.00	0.00
14,300.0	90.00	359.57	12,455.0	1,738.3	-1,065.1	1,875.2	0.00	0.00	0.00
14,400.0	90.00	359.57	12,455.0	1,838.3	-1,065.9	1,974.2	0.00	0.00	0.00
14,500.0	90.00	359.57	12,455.0	1,938.3	-1,066.7	2,073.2	0.00	0.00	0.00
14,600.0	90.00	359.57	12,455.0	2,038.3	-1,067.4	2,172.3	0.00	0.00	0.00
14,700.0	90.00	359.57	12,455.0	2,138.3	-1,068.2	2,271.3	0.00	0.00	0.00
14,800.0	90.00	359.57	12,455.0	2,238.3	-1,068.9	2,370.4	0.00	0.00	0.00
14,900.0	90.00	359.57	12,455.0	2,338.3	-1,069.7	2,469.4	0.00	0.00	0.00
15,000.0	90.00	359.57	12,455.0	2,438.3	-1,070.5	2,568.4	0.00	0.00	0.00
15,100.0	90.00	359.57	12,455.0	2,538.3	-1,071.2	2,667.5	0.00	0.00	0.00
15,200.0	90.00	359.57	12,455.0	2,638.3	-1,072.0	2,766.5	0.00	0.00	0.00
15,300.0	90.00	359.57	12,455.0	2,738.3	-1,072.7	2,865.5	0.00	0.00	0.00
15,400.0	90.00	359.57	12,455.0	2,838.3	-1,073.5	2,964.6	0.00	0.00	0.00
15,500.0	90.00	359.57	12,455.0	2,938.3	-1,074.2	3,063.6	0.00	0.00	0.00
15,600.0	90.00	359.57	12,455.0	3,038.3	-1,075.0	3,162.7	0.00	0.00	0.00
15,700.0	90.00	359.57	12,455.0	3,138.3	-1,075.8	3,261.7	0.00	0.00	0.00
15,800.0	90.00	359.57	12,455.0	3,238.3	-1,076.5	3,360.7	0.00	0.00	0.00
15,900.0	90.00	359.57	12,455.0	3,338.3	-1,077.3	3,459.8	0.00	0.00	0.00
16,000.0	90.00	359.57	12,455.0	3,438.3	-1,078.0	3,558.8	0.00	0.00	0.00
16,100.0	90.00	359.57	12,455.0	3,538.3	-1,078.8	3,657.8	0.00	0.00	0.00
16,200.0	90.00	359.57	12,455.0	3,638.3	-1,079.6	3,756.9	0.00	0.00	0.00
16,300.0	90.00	359.57	12,455.0	3,738.3	-1,080.3	3,855.9	0.00	0.00	0.00
16,400.0	90.00	359.57	12,455.0	3,838.3	-1,081.1	3,955.0	0.00	0.00	0.00
16,500.0	90.00	359.57	12,455.0	3,938.3	-1,081.8	4,054.0	0.00	0.00	0.00
16,600.0	90.00	359.57	12,455.0	4,038.3	-1,082.6	4,153.0	0.00	0.00	0.00
16,700.0	90.00	359.57	12,455.0	4,138.3	-1,083.4	4,252.1	0.00	0.00	0.00
16,800.0	90.00	359.57	12,455.0	4,238.3	-1,084.1	4,351.1	0.00	0.00	0.00
16,900.0	90.00	359.57	12,455.0	4,338.3	-1,084.9	4,450.1	0.00	0.00	0.00
17,000.0	90.00	359.57	12,455.0	4,438.3	-1,085.6	4,549.2	0.00	0.00	0.00
17,100.0	90.00	359.57	12,455.0	4,538.2	-1,086.4	4,648.2	0.00	0.00	0.00
17,200.0	90.00	359.57	12,455.0	4,638.2	-1,087.1	4,747.2	0.00	0.00	0.00
17,300.0	90.00	359.57	12,455.0	4,738.2	-1,087.9	4,846.3	0.00	0.00	0.00
17,400.0	90.00	359.57	12,455.0	4,838.2	-1,088.7	4,945.3	0.00	0.00	0.00
17,500.0	90.00	359.57	12,455.0	4,938.2	-1,089.4	5,044.4	0.00	0.00	0.00
17,600.0	90.00	359.57	12,455.0	5,038.2	-1,090.2	5,143.4	0.00	0.00	0.00
17,700.0	90.00	359.57	12,455.0	5,138.2	-1,090.9	5,242.4	0.00	0.00	0.00
17,800.0	90.00	359.57	12,455.0	5,238.2	-1,091.7	5,341.5	0.00	0.00	0.00
17,900.0	90.00	359.57	12,455.0	5,338.2	-1,092.5	5,440.5	0.00	0.00	0.00
18,000.0	90.00	359.57	12,455.0	5,438.2	-1,093.2	5,539.5	0.00	0.00	0.00
18,100.0	90.00	359.57	12,455.0	5,538.2	-1,094.0	5,638.6	0.00	0.00	0.00
18,200.0	90.00	359.57	12,455.0	5,638.2	-1,094.7	5,737.6	0.00	0.00	0.00
18,300.0	90.00	359.57	12,455.0	5,738.2	-1,095.5	5,836.7	0.00	0.00	0.00
18,400.0	90.00	359.57	12,455.0	5,838.2	-1,096.3	5,935.7	0.00	0.00	0.00
18,500.0	90.00	359.57	12,455.0	5,938.2	-1,097.0	6,034.7	0.00	0.00	0.00

Database:	EDM 5000.14	Local Co-ordinate Reference:	Well #708H
Company:	EOG Resources - Midland	TVD Reference:	KB = 25 @ 3531.0usft
Project:	Lea County, NM (NAD 83 NME)	MD Reference:	KB = 25 @ 3531.0usft
Site:	Bandit 32 State Com	North Reference:	Grid
Well:	#708H	Survey Calculation Method:	Minimum Curvature
Wellbore:	OH		
Design:	Plan #0.1		

Planned Survey										
Measured Depth (usft)	Inclination (°)	Azimuth (°)	Vertical Depth (usft)	+N/-S (usft)	+E/-W (usft)	Vertical Section (usft)	Dogleg Rate (°/100usft)	Build Rate (°/100usft)	Turn Rate (°/100usft)	
18,600.0	90.00	359.57	12,455.0	6,038.2	-1,097.8	6,133.8	0.00	0.00	0.00	
18,700.0	90.00	359.57	12,455.0	6,138.2	-1,098.5	6,232.8	0.00	0.00	0.00	
18,800.0	90.00	359.57	12,455.0	6,238.2	-1,099.3	6,331.8	0.00	0.00	0.00	
18,900.0	90.00	359.57	12,455.0	6,338.2	-1,100.1	6,430.9	0.00	0.00	0.00	
19,000.0	90.00	359.57	12,455.0	6,438.2	-1,100.8	6,529.9	0.00	0.00	0.00	
19,100.0	90.00	359.57	12,455.0	6,538.2	-1,101.6	6,629.0	0.00	0.00	0.00	
19,200.0	90.00	359.57	12,455.0	6,638.2	-1,102.3	6,728.0	0.00	0.00	0.00	
19,300.0	90.00	359.57	12,455.0	6,738.2	-1,103.1	6,827.0	0.00	0.00	0.00	
19,400.0	90.00	359.57	12,455.0	6,838.2	-1,103.8	6,926.1	0.00	0.00	0.00	
19,500.0	90.00	359.57	12,455.0	6,938.2	-1,104.6	7,025.1	0.00	0.00	0.00	
19,600.0	90.00	359.57	12,455.0	7,038.2	-1,105.4	7,124.1	0.00	0.00	0.00	
19,700.0	90.00	359.57	12,455.0	7,138.2	-1,106.1	7,223.2	0.00	0.00	0.00	
19,800.0	90.00	359.57	12,455.0	7,238.2	-1,106.9	7,322.2	0.00	0.00	0.00	
19,900.0	90.00	359.57	12,455.0	7,338.2	-1,107.6	7,421.3	0.00	0.00	0.00	
20,000.0	90.00	359.57	12,455.0	7,438.2	-1,108.4	7,520.3	0.00	0.00	0.00	
20,078.8	90.00	359.57	12,455.0	7,517.0	-1,109.0	7,598.4	0.00	0.00	0.00	
PBHL(Bandit 29 St Com #708H)										

Design Targets										
Target Name	Dip Angle (°)	Dip Dir. (°)	TVD (usft)	+N/-S (usft)	+E/-W (usft)	Northing (usft)	Easting (usft)	Latitude	Longitude	
- hit/miss target										
- Shape										
KOP(Bandit 29 St Com #	0.00	0.00	11,977.5	-256.0	-1,050.0	427,906.00	767,685.00	32° 10' 27.394 N	103° 36' 6.385 W	
- plan hits target center										
- Point										
PBHL(Bandit 29 St Com	0.00	0.00	12,455.0	7,517.0	-1,109.0	435,679.00	767,626.00	32° 11' 44.314 N	103° 36' 6.456 W	
- plan hits target center										
- Point										
FTP(Bandit 29 St Com #	0.00	0.00	12,455.0	-206.0	-1,050.0	427,956.00	767,685.00	32° 10' 27.889 N	103° 36' 6.381 W	
- plan misses target center by 163.4usft at 12433.4usft MD (12332.5 TVD, -97.8 N, -1051.2 E)										
- Point										



Lea County, NM (NAD 83 NME)

Bandit 32 State Com

#708H

Plan #0.1

PROJECT DETAILS: Lea County, NM (NAD 83 NME)

Geodetic System: US State Plane 1983  
Datum: North American Datum 1983  
Ellipsoid: GRS 1980  
Zone: New Mexico Eastern Zone  
System Datum: Mean Sea Level



Azimuths to Grid North  
True North: -0.39°  
Magnetic North: 6.38°

Magnetic Field  
Strength: 47727.4snT  
Dip Angle: 59.89°  
Date: 3/12/2019  
Model: IGRF2015

To convert a Magnetic Direction to a Grid Direction, Add 6.38°  
To convert a Magnetic Direction to a True Direction, Add 6.77° East  
To convert a True Direction to a Grid Direction, Subtract 0.39°

WELL DETAILS: #708H

3506.0

KB = 25 @ 3531.0usft

+N/-S

+E/-W

Northing

Eastings

Latitude

Longitude

Slot

0.0

0.0

426162.00

768735.00

32° 10' 29.857 N

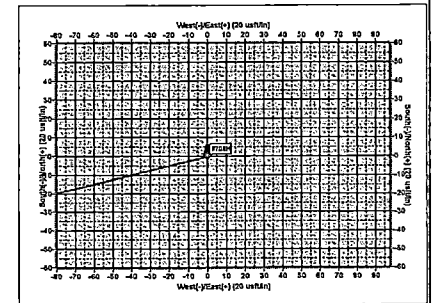
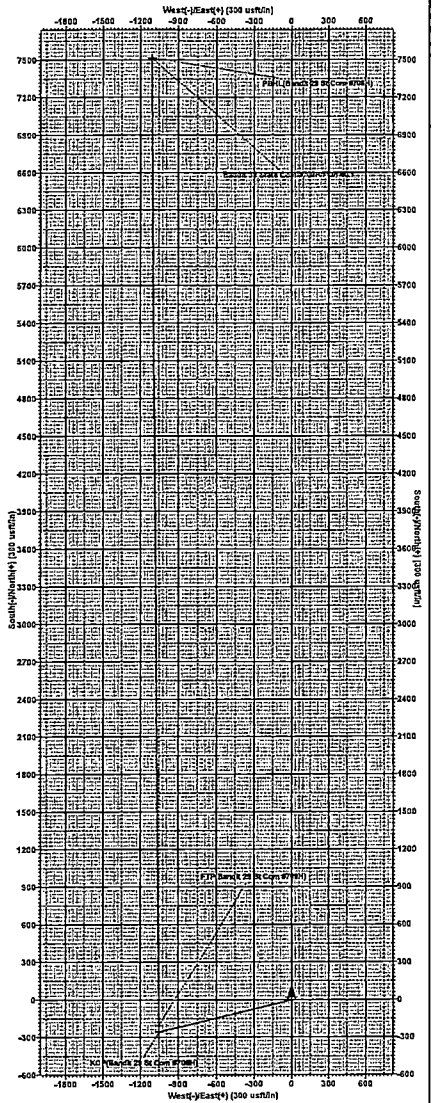
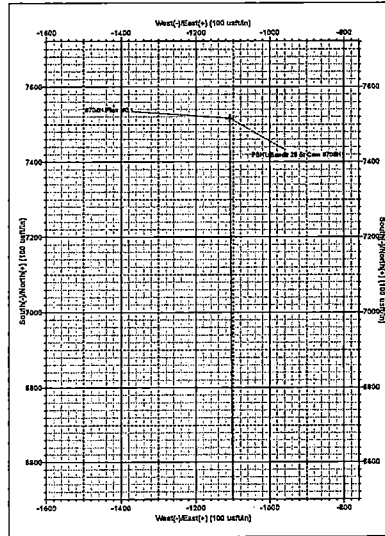
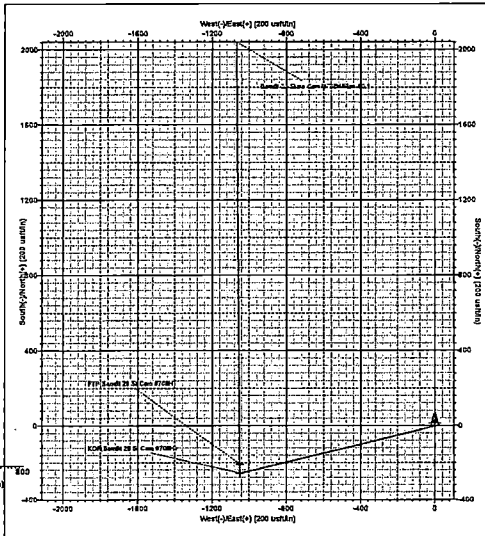
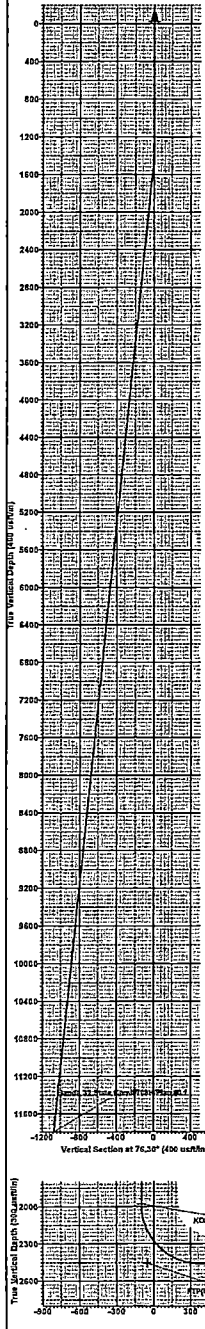
103° 35' 54.148 W

SECTION DETAILS

Sec	MD	Inc	Azi	TVD	+N/-S	+E/-W	Dleg	TFace	Vsect	Target
1	0.0	0.00	0.00	0.0	0.0	0.0	0.00	0.00	0.0	
2	1300.0	0.00	0.00	1300.0	0.0	0.0	0.00	0.00	0.0	
3	1597.2	5.94	256.30	1596.7	-3.6	-15.0	2.00	256.30	-1.4	
4	11735.9	5.94	256.30	11680.8	-252.4	-1035.0	0.00	0.00	-98.6	
5	12033.1	0.00	0.00	11977.5	-256.0	-1050.0	2.00	180.00	-100.0	KOP(Bandit 29 St Com #708H)
6	12763.1	90.00	359.57	12455.0	221.4	-1053.6	12.00	359.57	372.9	
7	20076.6	90.00	359.57	12455.0	7517.0	-1109.0	0.00	0.00	7598.4	PBHL(Bandit 29 St Com #708H)

WELLBORE TARGET DETAILS (MAP COORDINATES)

Name	TVD	+N/-S	+E/-W	Northing	Eastings	Shape
KOP(Bandit 29 St Com #708H)	11977.5	-256.0	-1050.0	427956.00	767685.00	Point
FTP(Bandit 29 St Com #708H)	12455.0	-296.0	-1050.0	427956.00	767685.00	Point
PBHL(Bandit 29 St Com #708H)	12455.0	7517.0	-1109.0	435678.00	767626.00	Point



Lea County, NM (NAD 83 NME)  
Bandit 32 State Com  
#708H  
Plan #0.1