

WELL LOCATION AND ACREAGE DEDICATION PLAT

¹ API Number 30-025-46453	² Pool Code 98116	³ Pool Name WC-025 G-09 S253402N; Wolfcamp
⁴ Property Code 313188	⁵ Property Name OSPREY 10	⁶ Well Number 707H
⁷ OGRID No. 7377	⁸ Operator Name EOG RESOURCES, INC.	⁹ Elevation 3333'

¹⁰Surface Location

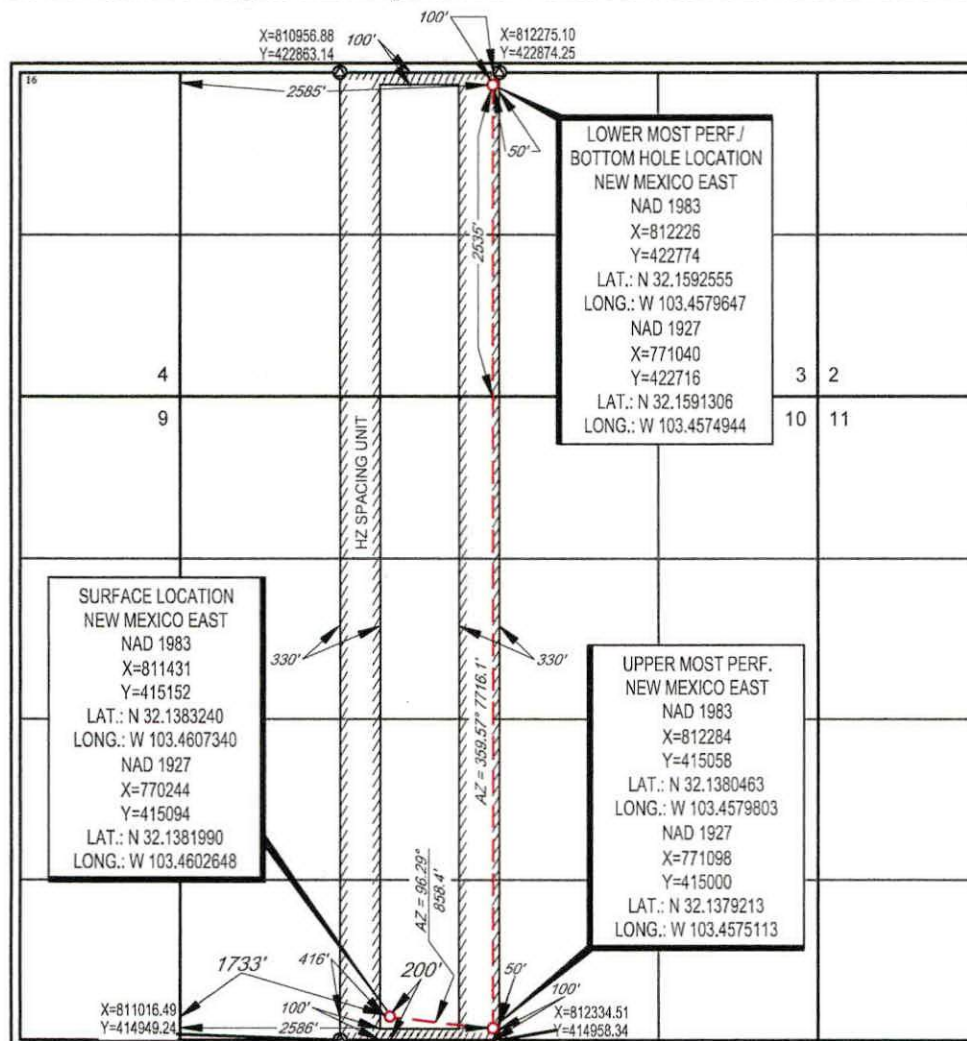
UL or lot no.	Section	Township	Range	Lot Idn	Feet from the	North/South line	Feet from the	East/West line	County
N	10	25-S	34-E	-	200'	SOUTH	1733'	WEST	LEA

¹¹Bottom Hole Location If Different From Surface

UL or lot no.	Section	Township	Range	Lot Idn	Feet from the	North/South line	Feet from the	East/West line	County
K	3	25-S	34-E	-	2535'	SOUTH	2585'	WEST	LEA

¹² Dedicated Acres 240.00	¹³ Joint or Infill	¹⁴ Consolidation Code	¹⁵ Order No.
--	-------------------------------	----------------------------------	-------------------------

No allowable will be assigned to this completion until all interests have been consolidated or a non-standard unit has been approved by the division.



17 OPERATOR CERTIFICATION

I hereby certify that the information contained herein is true and complete to the best of my knowledge and belief, and that this organization either owns a working interest or unleased mineral interest in the land including the proposed bottom hole location or has a right to drill this well at this location pursuant to a contract with an owner of such a mineral or working interest, or to a voluntary pooling agreement or a compulsory pooling order heretofore entered by the division.

Star L Harrell 11/26/19
Signature Date

Star L Harrell
Printed Name

star_harrell@eogresources.com

18 SURVEYOR CERTIFICATION

I hereby certify that the well location shown on this plat was plotted from field notes of actual surveys made by me or under my supervision, and that the same is true to the best of my belief.

~~11/18/2019~~

Date of Survey _____
Signature and Seal of Professional Surveyor _____

Certificate Number