

District I  
1625 N. French Dr., Hobbs, NM 88240  
Phone: (575) 393-6161 Fax: (575) 393-0720  
District II  
811 S. First St., Artesia, NM 88210  
Phone: (575) 748-1283 Fax: (575) 748-9720  
District III  
1000 Rio Brazos Road, Aztec, NM 87410  
Phone: (505) 334-6178 Fax: (505) 334-6170  
District IV  
1220 S. St. Francis Dr., Santa Fe, NM 87505  
Phone: (505) 476-3460 Fax: (505) 476-3462

State of New Mexico  
Energy, Minerals & Natural Resources  
Department  
OIL CONSERVATION DIVISION  
1220 South St. Francis Dr.  
Santa Fe, NM 87505

FORM C-102

Revised August 1, 2011

Submit one copy to appropriate

District Office

**OCD - HOBBS**  
**04/13/2020**  
**RECEIVED**

☐ AMENDED REPORT

**WELL LOCATION AND ACREAGE DEDICATION PLAT**

<sup>1</sup> API Number <b>30-025-47100</b>		<sup>2</sup> Pool Code <b>97088</b>		<sup>3</sup> Pool Name <b>WC-025 G-08 S2535340; Bone Spring</b>	
<sup>4</sup> Property Code <b>320549</b>		<sup>5</sup> Property Name <b>LESLIE FED COM</b>			<sup>6</sup> Well Number <b>123H</b>
<sup>7</sup> GRID No. <b>228937</b>		<sup>8</sup> Operator Name <b>MATADOR PRODUCTION COMPANY</b>			<sup>9</sup> Elevation <b>3278'</b>

**<sup>10</sup>Surface Location**

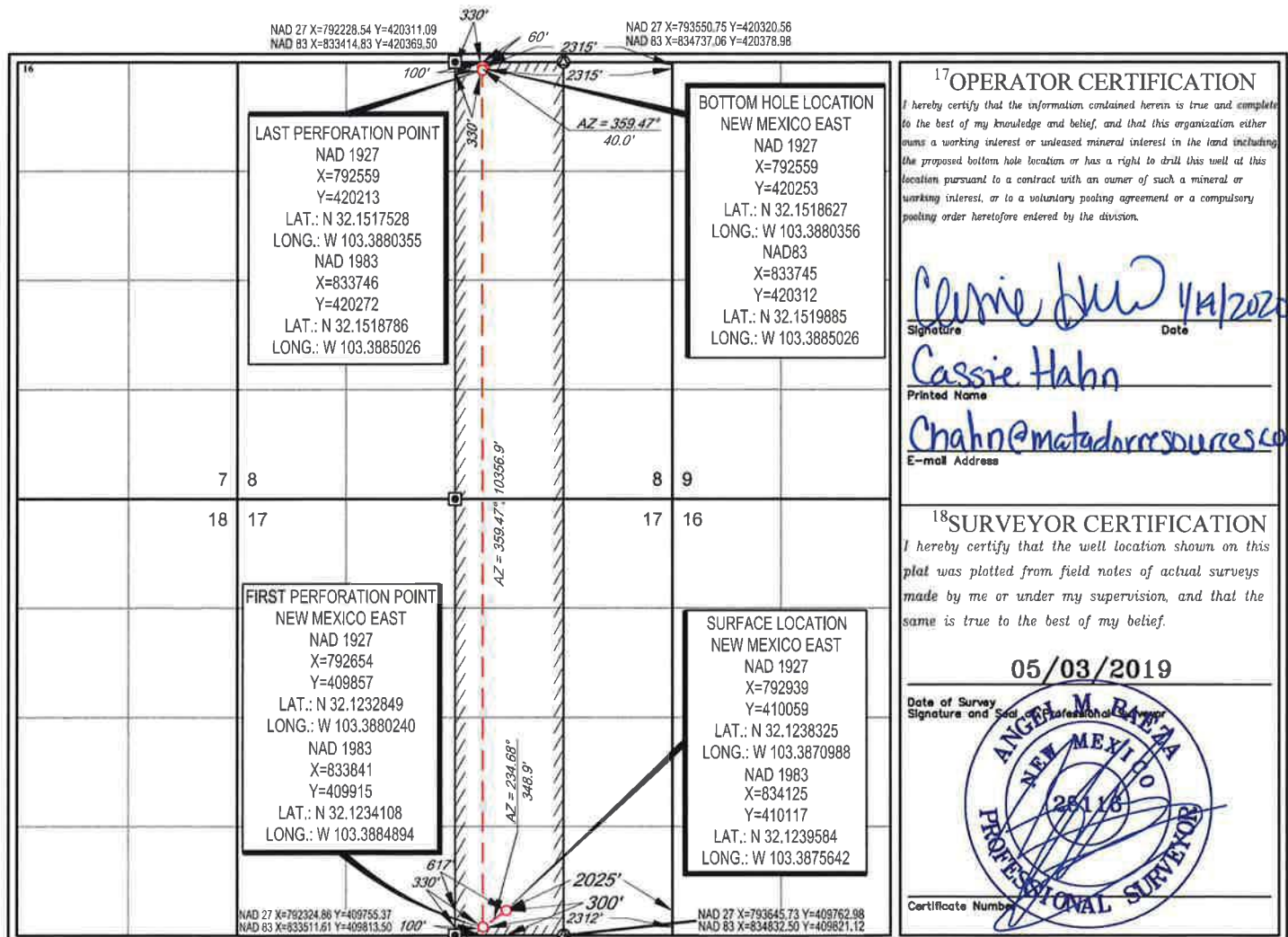
UL or lot no.	Section	Township	Range	Lot Idn	Feet from the	North/South line	Feet from the	East/West line	County
<b>0</b>	<b>17</b>	<b>25-S</b>	<b>35-E</b>	<b>-</b>	<b>300'</b>	<b>SOUTH</b>	<b>2025'</b>	<b>EAST</b>	<b>LEA</b>

**<sup>11</sup>Bottom Hole Location If Different From Surface**

UL or lot no.	Section	Township	Range	Lot Idn	Feet from the	North/South line	Feet from the	East/West line	County
<b>B</b>	<b>8</b>	<b>25-S</b>	<b>35-E</b>	<b>-</b>	<b>60'</b>	<b>NORTH</b>	<b>2315'</b>	<b>EAST</b>	<b>LEA</b>

<sup>12</sup> Dedicated Acres <b>320</b>	<sup>13</sup> Joint or Infill	<sup>14</sup> Consolidation Code	<sup>15</sup> Order No.
---	-------------------------------	----------------------------------	-------------------------

No allowable will be assigned to this completion until all interests have been consolidated or a non-standard unit has been approved by the division.



**<sup>17</sup>OPERATOR CERTIFICATION**

I hereby certify that the information contained herein is true and complete to the best of my knowledge and belief, and that this organization either owns a working interest or undivided mineral interest in the land including the proposed bottom hole location or has a right to drill this well at this location pursuant to a contract with an owner of such a mineral or working interest, or to a voluntary pooling agreement or a compulsory pooling order heretofore entered by the division.

*Cassie Hahn*  
Signature Date 4/14/2020

Cassie Hahn  
Printed Name

Chahn@matadorresources.com  
E-mail Address

**<sup>18</sup>SURVEYOR CERTIFICATION**

I hereby certify that the well location shown on this plat was plotted from field notes of actual surveys made by me or under my supervision, and that the same is true to the best of my belief.

05/03/2019

Date of Survey Signature and Seal of Professional Surveyor

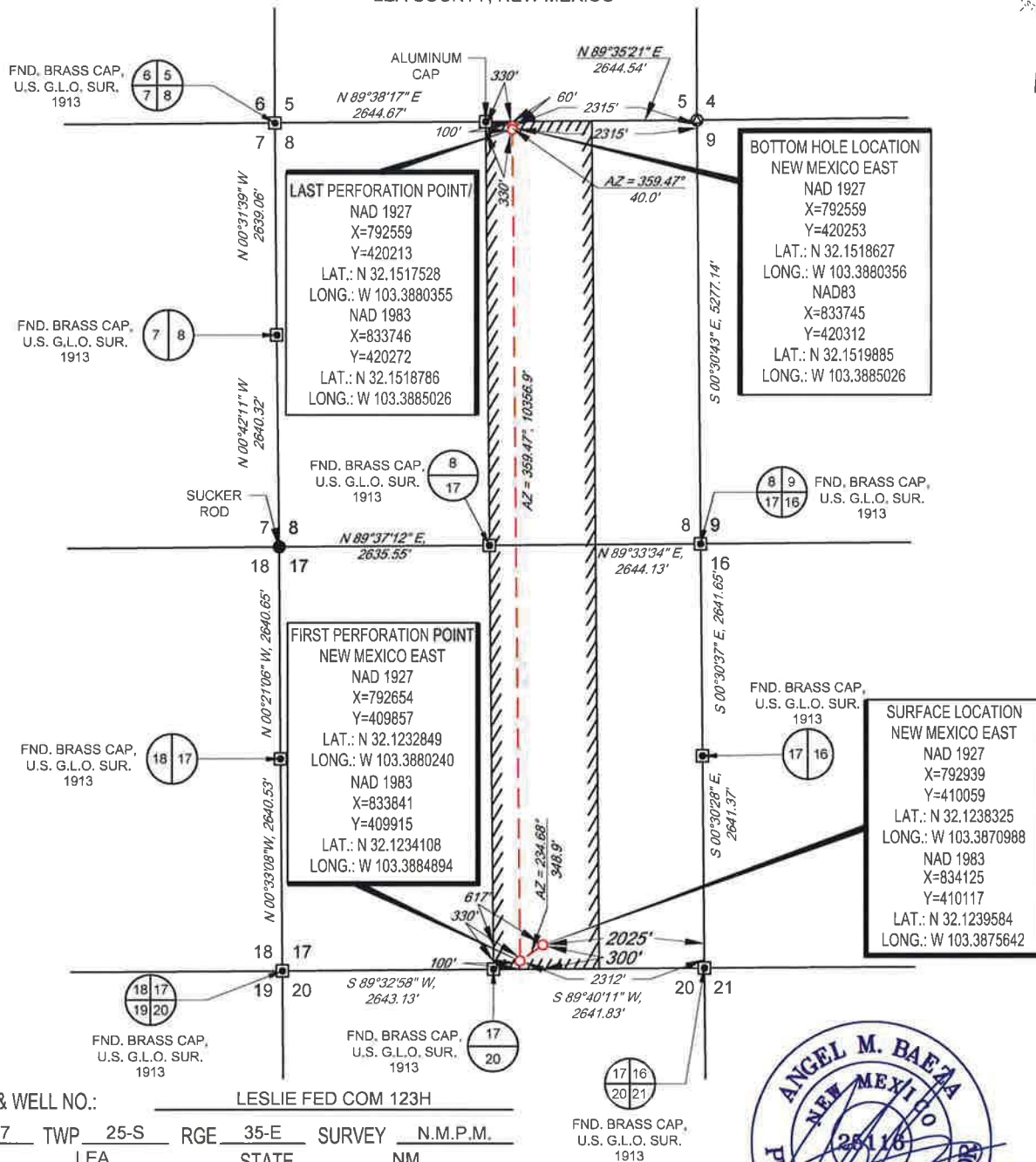


Certificate Number

SCALE: 1" = 1000'  
0' 500' 1000'



SECTION 17, TOWNSHIP 25-S, RANGE 35-E, N.M.P.M.  
LEA COUNTY, NEW MEXICO



LEASE NAME & WELL NO.: LESLIE FED COM 123H  
SECTION 17 TWP 25-S RGE 35-E SURVEY N.M.P.M.  
COUNTY LEA STATE NM  
DESCRIPTION 300' FSL & 2025' FEL

DISTANCE & DIRECTION

FROM INT. OF NM-128 W. & NM-205 N GO WEST ON NM-128 ±13.8 MILES. THENCE SOUTH (LEFT) ON BATTLE AXE RD. ±0.3 MILES. THENCE SOUTH ON MADERA RD. ±1.4 MILES, THENCE SOUTHEAST (LEFT) ON LEASE RD. ±3.1 MILES, THENCE EAST (LEFT) ±1.0 MILES, THENCE NORTHEAST (LEFT) ±0.5 MILES, THENCE NORTH(LEFT) ON A PROPOSED RD. ±283 FEET TO A POINT ±335 FEET SOUTH OF THE LOCATION.

ALL BEARINGS, DISTANCES, AND COORDINATE VALUES CONTAINED HEREON ARE GRID BASED UPON THE NEW MEXICO COORDINATE SYSTEM OF 1983, EAST ZONE, U.S. SURVEY FEET

THIS EASEMENT/SERVITUDE LOCATION SHOWN HEREON HAS BEEN SURVEYED ON THE GROUND UNDER MY SUPERVISION AND PREPARED ACCORDING TO THE EVIDENCE FOUND AT THE TIME OF SURVEY, AND DATA PROVIDED BY MATADOR PRODUCTION COMPANY. THIS CERTIFICATION IS MADE AND LIMITED TO THOSE PERSONS OR ENTITIES SHOWN ON THE FACE OF THIS PLAT AND IS NON-TRANSFERABLE. THIS SURVEY IS CERTIFIED FOR THIS TRANSACTION ONLY.

AS OF THE DATE OF SURVEY, ALL ABOVE GROUND APPURTENANCES WITHIN 300' OF THE STAKED LOCATION ARE SHOWN HEREON.



Angel M. Baeza, P.S. No. 25116  
MAY 16, 2019



**TOPOGRAPHIC**  
LOYALTY INNOVATION LEGACY

1400 EVERMAN PARKWAY, Ste. 146 • FT. WORTH, TEXAS 76140  
TELEPHONE: (817) 744-7512 • FAX: (817) 744-7554  
2803 NORTH BIG SPRING • MIDLAND, TEXAS 79705  
TELEPHONE: (432) 682-1653 OR (800) 767-1653 • FAX (432) 682-1743  
WWW.TOPOGRAPHIC.COM