

District I
1625 N. French Dr., Hobbs, NM 88240
Phone: (575) 393-6161 Fax: (575) 393-0720
District II
811 S. First St., Artesia, NM 88210
Phone: (575) 748-1283 Fax: (575) 748-9720
District III
1000 Rio Brazos Road, Aztec, NM 87410
Phone: (505) 334-6178 Fax: (505) 334-6170
District IV
1220 S. St. Francis Dr., Santa Fe, NM 87505
Phone: (505) 476-3460 Fax: (505) 476-3462

State of New Mexico
Energy, Minerals & Natural Resources
Department
OIL CONSERVATION DIVISION
1220 South St. Francis Dr.
Santa Fe, NM 87505

OCD - HOBBS
04/13/2020
RECEIVED

FORM C-102
Revised August 1, 2011
Submit one copy to appropriate
District Office

☐ AMENDED REPORT

WELL LOCATION AND ACREAGE DEDICATION PLAT

¹ API Number 30-025-47101	² Pool Code 97088	³ Pool Name WC-025 G-08 S2535340; Bone Spring
⁴ Property Code 320549	⁵ Property Name LESLIE FED COM	⁶ Well Number 124H
⁷ OGRID No. 228937	⁸ Operator Name MATADOR PRODUCTION COMPANY	⁹ Elevation 3257'

¹⁰Surface Location

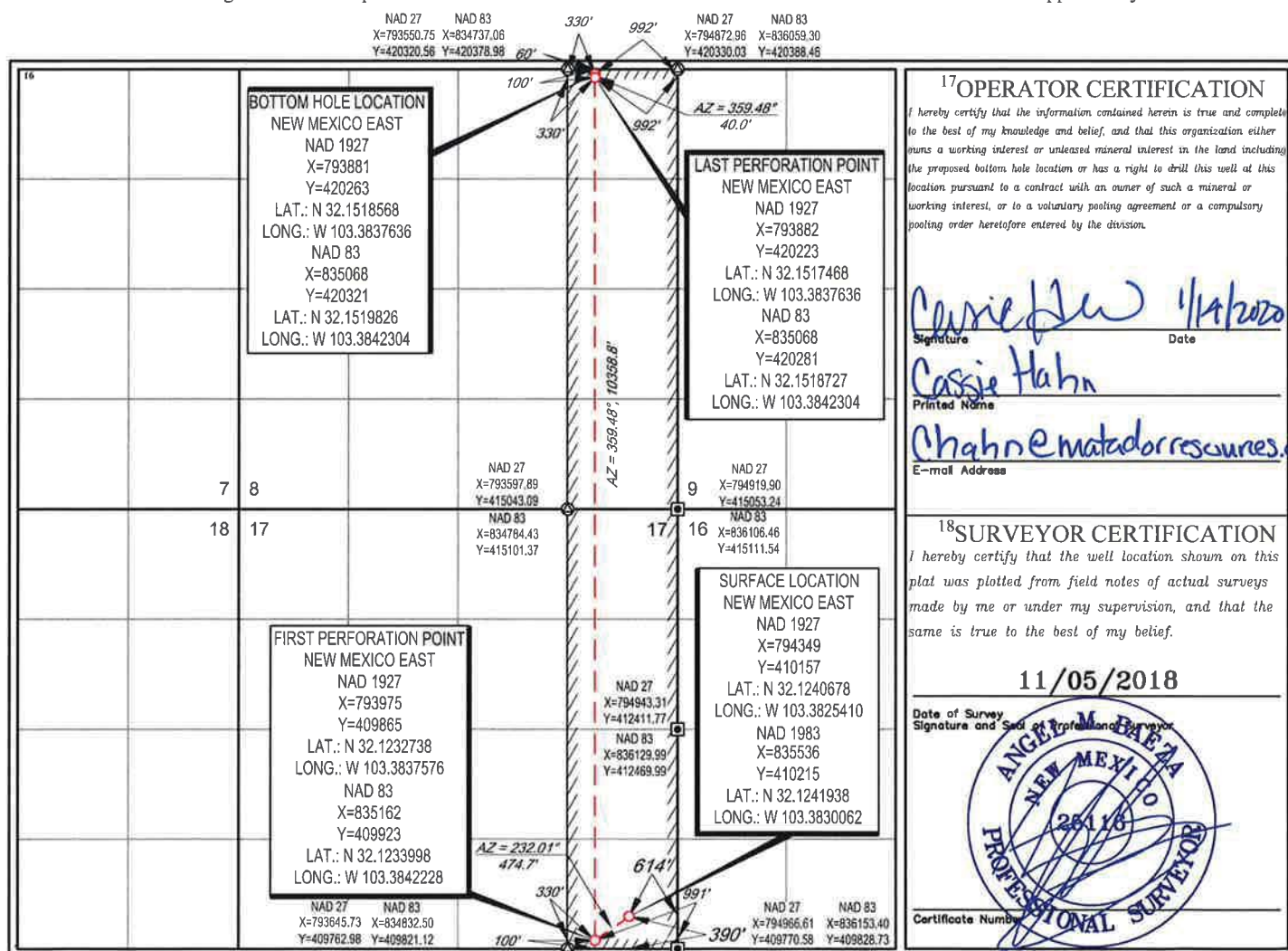
UL or lot no.	Section	Township	Range	Lot Idn	Feet from the	North/South line	Feet from the	East/West line	County
P	17	25-S	35-E	-	390'	SOUTH	614'	EAST	LEA

¹¹Bottom Hole Location If Different From Surface

UL or lot no.	Section	Township	Range	Lot Idn	Feet from the	North/South line	Feet from the	East/West line	County
A	8	25-S	35-E	-	60'	NORTH	992'	EAST	LEA

¹² Dedicated Acres 320	¹³ Joint or Infill	¹⁴ Consolidation Code	¹⁵ Order No.
---	-------------------------------	----------------------------------	-------------------------

No allowable will be assigned to this completion until all interests have been consolidated or a non-standard unit has been approved by the division.

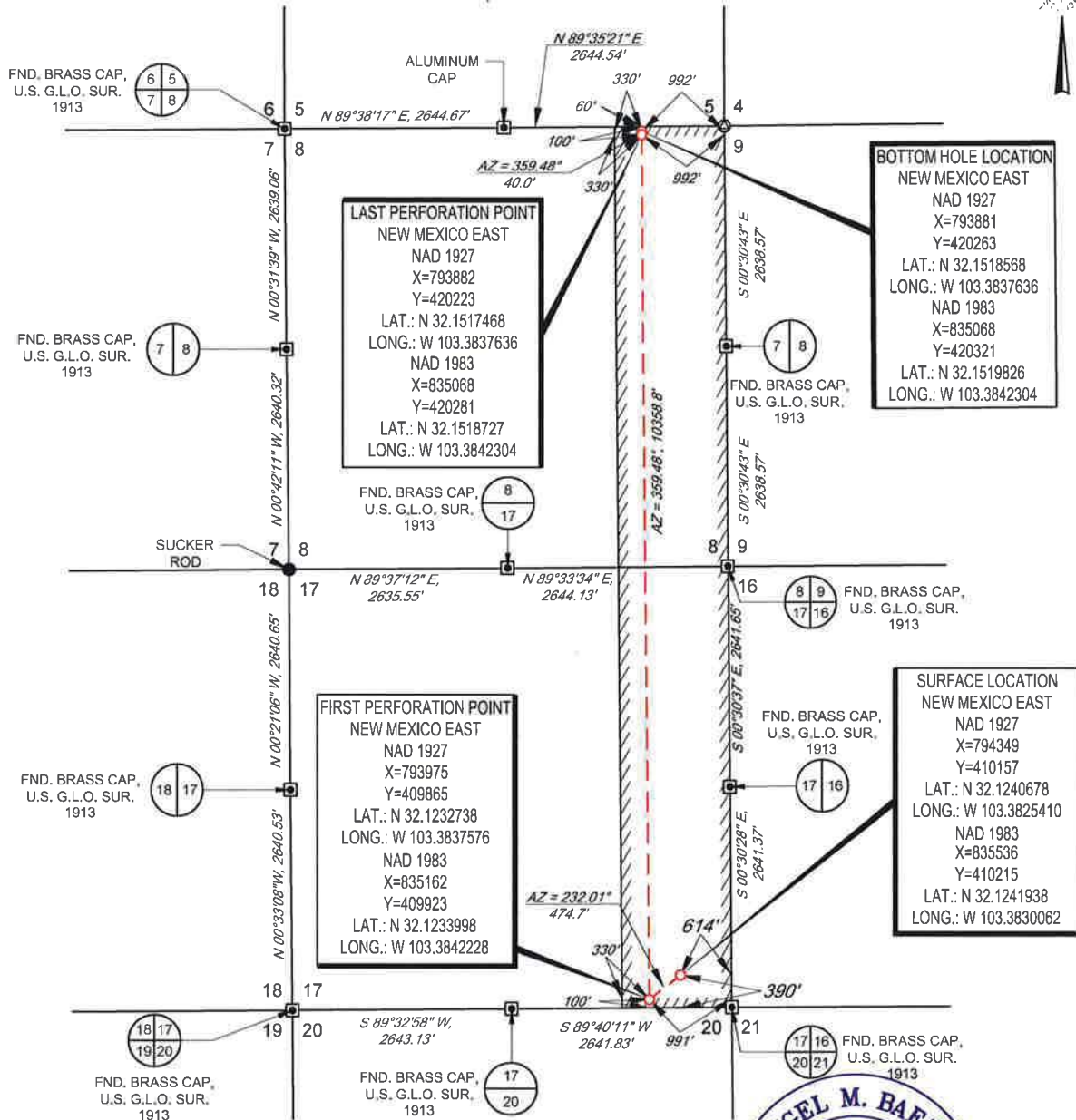


SCALE: 1" = 2000'

0' 1000' 2000'



SECTION 8 & 17, TOWNSHIP 25-S, RANGE 35-E, N.M.P.M.
LEA COUNTY, NEW MEXICO



LEASE NAME & WELL NO.: LESLIE FED COM 124H

SECTION 17 TWP 25-S RGE 35-E SURVEY N.M.P.M.

COUNTY LEA STATE NM

DESCRIPTION 390' FSL & 614' FEL

DISTANCE & DIRECTION

FROM INT. OF NM-128 W. & NM-205 N GO WEST ON NM-128 ±13.8 MILES. THENCE SOUTH (LEFT) ON BATTLE AXE RD. ±0.3 MILES, THENCE SOUTH ON MADERA RD. ±1.4 MILES, THENCE SOUTHEAST (LEFT) ON LEASE RD. ±3.1 MILES, THENCE EAST (LEFT) ±1.0 MILES, THENCE NORTHEAST (LEFT) ±0.5 MILES, THENCE NORTH(LEFT) ON A PROPOSED RD. ±209 FEET TO A POINT ±277 FEET SOUTH OF THE LOCATION.

ALL BEARINGS, DISTANCES, AND COORDINATE VALUES CONTAINED HEREON ARE GRID BASED UPON THE NEW MEXICO COORDINATE SYSTEM OF 1983, EAST ZONE, U.S. SURVEY FEET

THIS EASEMENT/SERVITUDE LOCATION SHOWN HEREON HAS BEEN SURVEYED ON THE GROUND UNDER MY SUPERVISION AND PREPARED ACCORDING TO THE EVIDENCE FOUND AT THE TIME OF SURVEY, AND DATA PROVIDED BY MATADOR PRODUCTION COMPANY. THIS CERTIFICATION IS MADE AND LIMITED TO THOSE PERSONS OR ENTITIES SHOWN ON THE FACE OF THIS PLAT AND IS NON-TRANSFERABLE. THIS SURVEY IS CERTIFIED FOR THIS TRANSACTION ONLY.

AS OF THE DATE OF SURVEY, ALL ABOVE GROUND APPURTENANCES WITHIN 300' OF THE STAKED LOCATION ARE SHOWN HEREON.



Angel M. Baeza, P.S. No. 25116

MAY 31, 2019



TOPOGRAPHIC
LOYALTY INNOVATION LEGACY

1400 EVERMAN PARKWAY, Ste. 146 • FT. WORTH, TEXAS 76140
TELEPHONE: (817) 744-7512 • FAX (817) 744-7554

2903 NORTH BIG SPRING • MIDLAND, TEXAS 79705
TELEPHONE: (432) 682-1653 OR (800) 767-1653 • FAX (432) 682-1743
WWW.TOPOGRAPHIC.COM