

District I
1625 N. French Dr., Hobbs, NM 88240
Phone: (575) 393-6161 Fax: (575) 393-0720
District II
811 S. First St., Artesia, NM 88210
Phone: (575) 748-1283 Fax: (575) 748-9720
District III
1000 Rio Brazos Road, Aztec, NM 87410
Phone: (505) 334-6178 Fax: (505) 334-6170
District IV
1220 S. St. Francis Dr., Santa Fe, NM 87505
Phone: (505) 476-3460 Fax: (505) 476-3462

State of New Mexico
Energy, Minerals & Natural Resources
Department
OIL CONSERVATION DIVISION
1220 South St. Francis Dr.
Santa Fe, NM 87505

FORM C-102
Revised August 1, 2011
Submit one copy to appropriate
District Office

OCD - HOBBS
04/13/2020
RECEIVED

☐ AMENDED REPORT

WELL LOCATION AND ACREAGE DEDICATION PLAT

¹ API Number 30-025-47102	² Pool Code 97088	³ Pool Name WC-025 G-08 S253534O; Bone Spring
⁴ Property Code 320549	⁵ Property Name LESLIE FED COM	⁶ Well Number 134H
⁷ OGRID No. 228937	⁸ Operator Name MATADOR PRODUCTION COMPANY	⁹ Elevation 3257'

¹⁰Surface Location

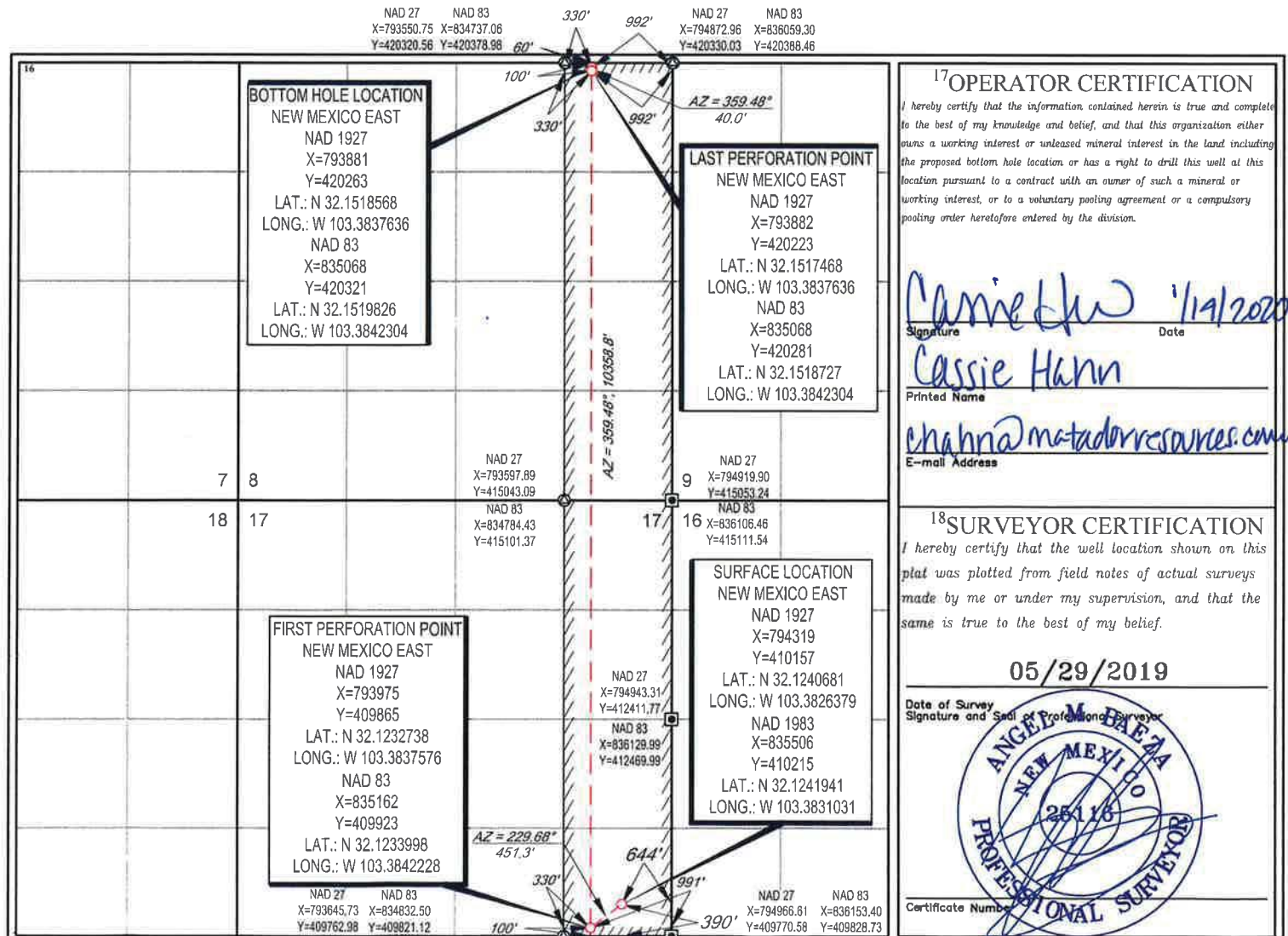
UL or lot no.	Section	Township	Range	Lot Idn	Feet from the	North/South line	Feet from the	East/West line	County
P	17	25-S	35-E	-	390'	SOUTH	644'	EAST	LEA

¹¹Bottom Hole Location If Different From Surface

UL or lot no.	Section	Township	Range	Lot Idn	Feet from the	North/South line	Feet from the	East/West line	County
A	8	25-S	35-E	-	60'	NORTH	992'	EAST	LEA

¹² Dedicated Acres 320	¹³ Joint or Infill	¹⁴ Consolidation Code	¹⁵ Order No.
---	-------------------------------	----------------------------------	-------------------------

No allowable will be assigned to this completion until all interests have been consolidated or a non-standard unit has been approved by the division.



¹⁷OPERATOR CERTIFICATION

I hereby certify that the information contained herein is true and complete to the best of my knowledge and belief, and that this organization either owns a working interest or unleased mineral interest in the land including the proposed bottom hole location or has a right to drill this well at this location pursuant to a contract with an owner of such a mineral or working interest, or to a voluntary pooling agreement or a compulsory pooling order heretofore entered by the division.

Cassie Hann 1/19/2020
Signature Date
Cassie Hann
Printed Name
channa@matadorresources.com
E-mail Address

¹⁸SURVEYOR CERTIFICATION

I hereby certify that the well location shown on this plat was plotted from field notes of actual surveys made by me or under my supervision, and that the same is true to the best of my belief.

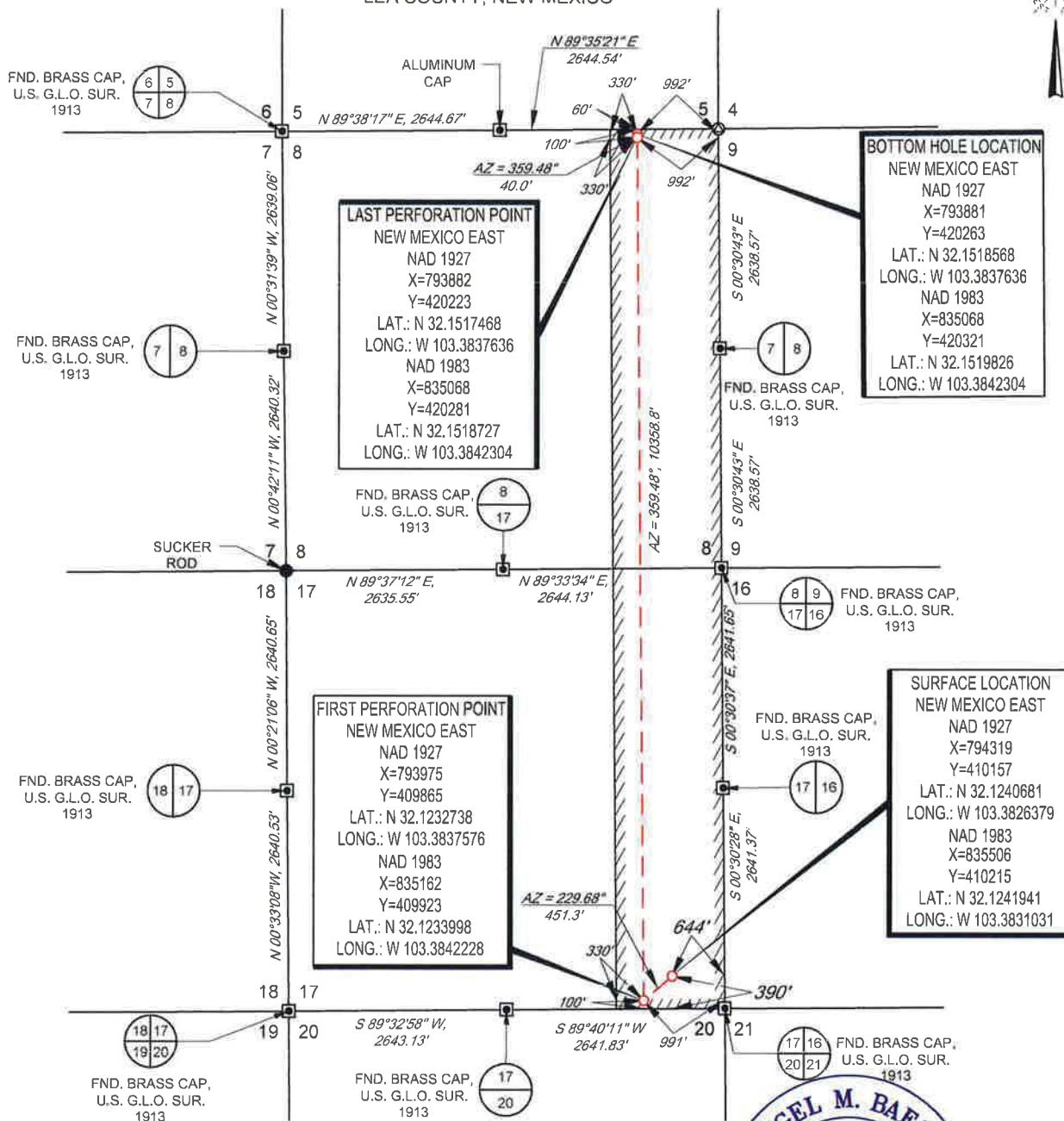
05/29/2019

Date of Survey
Signature and Seal of Professional Surveyor
ANGEL M. DIAZ
25116
Certificate Number

SCALE: 1" = 2000'
0' 1000' 2000'



SECTION 8 & 17, TOWNSHIP 25-S, RANGE 35-E, N.M.P.M.
LEA COUNTY, NEW MEXICO



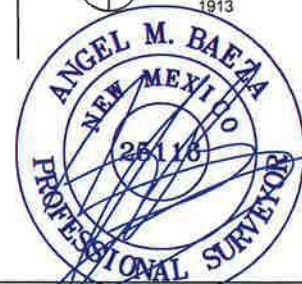
LEASE NAME & WELL NO.: LESLIE FED COM 134H
SECTION 17 TWP 25-S RGE 35-E SURVEY N.M.P.M.
COUNTY LEA STATE NM
DESCRIPTION 390' FSL & 644' FEL

DISTANCE & DIRECTION

FROM INT. OF NM-128 W. & NM-205 N GO WEST ON NM-128 ±13.8 MILES, THENCE SOUTH (LEFT) ON BATTLE AXE RD. ±0.3 MILES, THENCE SOUTH ON MADERA RD. ±1.4 MILES, THENCE SOUTHEAST (LEFT) ON LEASE RD. ±3.1 MILES, THENCE EAST (LEFT) ±1.0 MILES, THENCE NORTHEAST (LEFT) ±0.5 MILES, THENCE NORTH(LEFT) ON A PROPOSED RD. ±209 FEET TO A POINT ±295 FEET SOUTH OF THE LOCATION.

ALL BEARINGS, DISTANCES, AND COORDINATE VALUES CONTAINED HEREON ARE GRID BASED UPON THE NEW MEXICO COORDINATE SYSTEM OF 1983, EAST ZONE, U.S. SURVEY FEET
THIS EASEMENT/SERVITUDE LOCATION SHOWN HEREON HAS BEEN SURVEYED ON THE GROUND UNDER MY SUPERVISION AND PREPARED ACCORDING TO THE EVIDENCE FOUND AT THE TIME OF SURVEY, AND DATA PROVIDED BY MATADOR PRODUCTION COMPANY. THIS CERTIFICATION IS MADE AND LIMITED TO THOSE PERSONS OR ENTITIES SHOWN ON THE FACE OF THIS PLAT AND IS NON-TRANSFERABLE. THIS SURVEY IS CERTIFIED FOR THIS TRANSACTION ONLY.

AS OF THE DATE OF SURVEY, ALL ABOVE GROUND APPURTENANCES WITHIN 300' OF THE STAKED LOCATION ARE SHOWN HEREON.



Angel M. Baeza, P.S. No. 25116
MAY 31, 2019



1400 EVERMAN PARKWAY, Ste. 146 • FT. WORTH, TEXAS 76140
TELEPHONE: (817) 744-7512 • FAX (817) 744-7554
2903 NORTH BIG SPRING • MIDLAND, TEXAS 79705
TELEPHONE: (432) 682-1653 OR (800) 767-1653 • FAX (432) 682-1743
WWW.TOPOGRAPHIC.COM