

DISTRICT I
1625 N. FRENCH DR., HOBBS, NM 88240
Phone: (505) 393-6161 Fax: (505) 393-0720

DISTRICT II
811 S. FIRST ST., ARTESIA, NM 88210
Phone: (505) 748-1283 Fax: (505) 748-9720

DISTRICT III
1000 RIO BRAZOS RD., AZTEC, NM 87410
Phone: (505) 334-6178 Fax: (505) 334-6170

DISTRICT IV
1220 S. ST. FRANCIS DR., SANTA FE, NM 87505
Phone: (505) 476-3460 Fax: (505) 476-3462

State of New Mexico
Energy, Minerals & Natural Resources Department
OIL CONSERVATION DIVISION
1220 SOUTH ST. FRANCIS DR.
Santa Fe, New Mexico 87505

Form C-102
Revised August 1, 2011
Submit one copy to appropriate
District Office

OCD - HOBBS
06/02/2020
RECEIVED

☐ AMENDED REPORT

WELL LOCATION AND ACREAGE DEDICATION PLAT

API Number 30-025-47222	Pool Code 98105	Pool Name WC-025 G-09 S263416B; UPPER WOLFCAMP
Property Code 328254	Property Name RAILSPLITTER 15-22 FED COM	Well Number 11H
OGRID No. 6137	Operator Name DEVON ENERGY PRODUCTION COMPANY, L.P.	Elevation 3268.9'

Surface Location

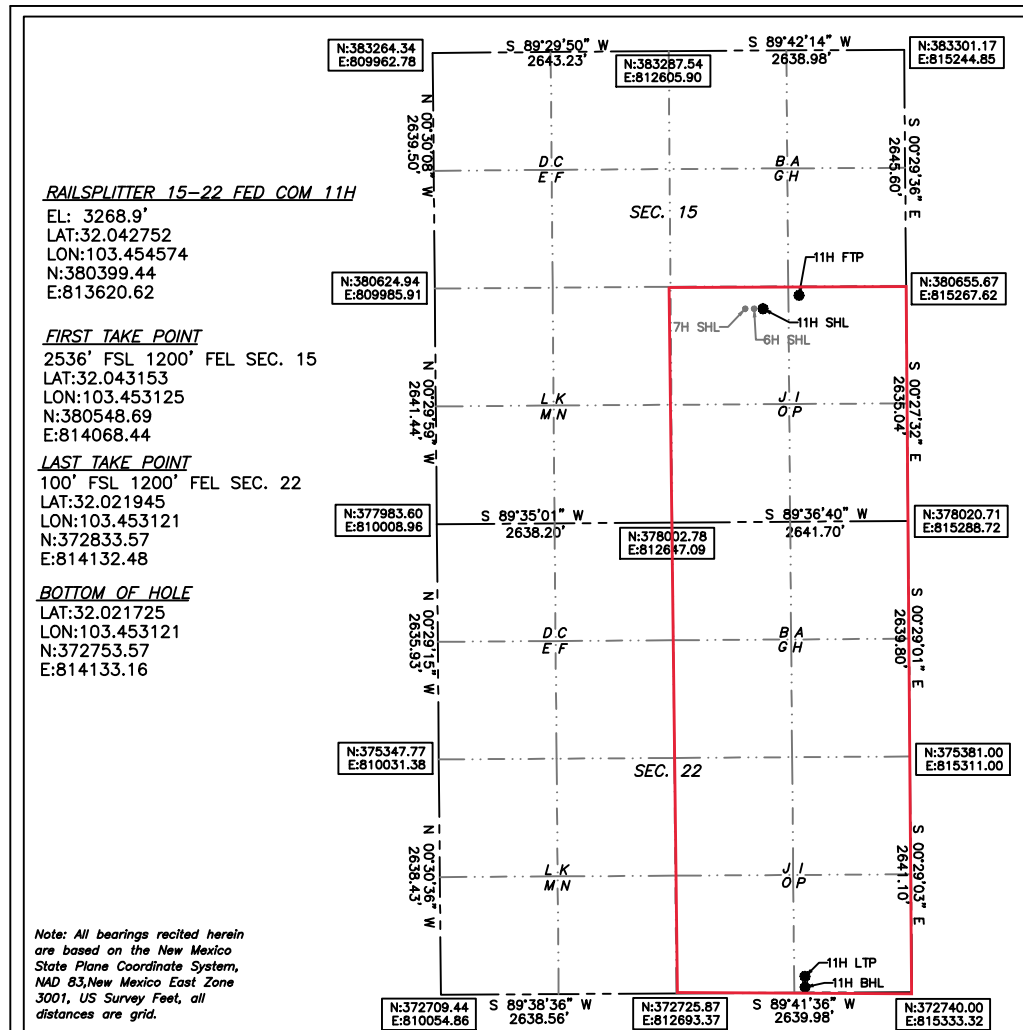
UL or lot No.	Section	Township	Range	Lot Idn	Feet from the	North/South line	Feet from the	East/West line	County
J	15	26-S	34-E		2390	SOUTH	1649	EAST	LEA

Bottom Hole Location If Different From Surface

UL or lot No.	Section	Township	Range	Lot Idn	Feet from the	North/South line	Feet from the	East/West line	County
P	22	26-S	34-E		20	SOUTH	1200	EAST	LEA

Dedicated Acres 480	Joint or Infill	Consolidation Code	Order No.
-------------------------------	-----------------	--------------------	-----------

NO ALLOWABLE WILL BE ASSIGNED TO THIS COMPLETION UNTIL ALL INTERESTS HAVE BEEN CONSOLIDATED
OR A NON-STANDARD UNIT HAS BEEN APPROVED BY THE DIVISION



OPERATOR CERTIFICATION

I hereby certify that the information herein is true and complete to the best of my knowledge and belief, and that this organization either owns a working interest or unleased mineral interest in the land including the proposed bottom hole location or has a right to drill this well at this location pursuant to a contract with an owner of such mineral or working interest, or to a voluntary pooling agreement or a compulsory pooling order heretofore entered by the division.

Rebecca Deal 12/18/2019
Signature Date
Rebecca Deal, Regulatory Analyst
Printed Name
rebecca.deal@dvn.com
E-mail Address

SURVEYOR CERTIFICATION

I hereby certify that the well location shown on this plat was plotted from field notes of actual surveys made by me or under my supervision, and that the same is true and correct to the best of my belief.

10/2019

Date of Survey

Signature & Seal of Professional Surveyor

10/30/19
Certificate No. 22404 B.L. LAMAN
DRAWN BY: CM

Intent ☒ As Drilled ☐

API #
30-025-47222

Operator Name: DEVON ENERGY PRODUCTION COMPANY, LP.	Property Name: RAILSPLITTER 15-22 FED COM	Well Number 11H
---	---	---------------------------

Kick Off Point (KOP)

UL	Section 15	Township 26S	Range 34E	Lot	Feet 2586	From N/S FSL	Feet 1200	From E/W FEL	County LEA
Latitude 32.043284					Longitude -103.45312			NAD 83	

First Take Point (FTP)

UL I	Section 15	Township 26-S	Range 34-E	Lot	Feet 2536	From N/S SOUTH	Feet 1200	From E/W EAST	County LEA
Latitude 32.043153					Longitude 103.453125			NAD 83	

Last Take Point (LTP)

UL P	Section 22	Township 26-S	Range 34-E	Lot	Feet 100	From N/S SOUTH	Feet 1200	From E/W EAST	County LEA
Latitude 32.021945					Longitude 103.453121			NAD 83	

Is this well the defining well for the Horizontal Spacing Unit?

Is this well an infill well?

If infill is yes please provide API if available, Operator Name and well number for Defining well for Horizontal Spacing Unit.

API #

Operator Name: DEVON ENERGY PRODUCTION COMPANY, LP.	Property Name: RAILSPLITTER 15-22 FED COM	Well Number 9H
---	---	--------------------------

KZ 06/29/2018