

OCD - HOBBS  
06/09/2020  
RECEIVED

FORM APPROVED  
OMB No. 1004-0137  
Expires: January 31, 2018

UNITED STATES  
DEPARTMENT OF THE INTERIOR  
BUREAU OF LAND MANAGEMENT

**APPLICATION FOR PERMIT TO DRILL OR REENTER**

1a. Type of work: <input checked="" type="checkbox"/> DRILL <input type="checkbox"/> REENTER 1b. Type of Well: <input checked="" type="checkbox"/> Oil Well <input type="checkbox"/> Gas Well <input type="checkbox"/> Other 1c. Type of Completion: <input type="checkbox"/> Hydraulic Fracturing <input checked="" type="checkbox"/> Single Zone <input type="checkbox"/> Multiple Zone		5. Lease Serial No. NMLC0068281B  6. If Indian, Allottee or Tribe Name  7. If Unit or CA Agreement, Name and No. ZIA HILLS BS/WC / NMNM138329X  8. Lease Name and Well No. ZHU 2032 BS [328111] 8H
2. Name of Operator CONOCOPHILLIPS COMPANY [217817]		9. API Well No. 30-025-47305
3a. Address PO Box 2197 Houston TX 77252	3b. Phone No. (include area code) (281)293-1748	10. Field and Pool, or Exploratory [98009] BONESPRING / ZIA HILLS; BONE SPRIN
4. Location of Well (Report location clearly and in accordance with any State requirements. *) At surface NESE / 2640 FSL / 1225 FEL / LAT 32.028108 / LONG -103.692547 At proposed prod. zone NENE / 50 FNL / 330 FEL / LAT 32.050108 / LONG -103.689665		11. Sec., T. R. M. or Blk. and Survey or Area SEC 20 / T26S / R32E / NMP
14. Distance in miles and direction from nearest town or post office* 43.95 miles		12. County or Parish LEA
15. Distance from proposed* location to nearest property or lease line, ft. (Also to nearest drig. unit line, if any) 1225 feet		16. No of acres in lease 1841.48
18. Distance from proposed location* to nearest well, drilling, completed, applied for, on this lease, ft. 33 feet		17. Spacing Unit dedicated to this well 0  20. BLM/BIA Bond No. in file FED: ES0085
21. Elevations (Show whether DF, KDB, RT, GL, etc.) 3143 feet	22. Approximate date work will start* 10/09/2020	23. Estimated duration 90 days
24. Attachments		

The following, completed in accordance with the requirements of Onshore Oil and Gas Order No. 1, and the Hydraulic Fracturing rule per 43 CFR 3162.3-3 (as applicable)

- |   |   |
|---|---|
| 1. Well plat certified by a registered surveyor.<br>2. A Drilling Plan.<br>3. A Surface Use Plan (if the location is on National Forest System Lands, the SUPO must be filed with the appropriate Forest Service Office). | 4. Bond to cover the operations unless covered by an existing bond on file (see Item 20 above).<br>5. Operator certification.<br>6. Such other site specific information and/or plans as may be requested by the BLM. |
|---|---|

25. Signature (Electronic Submission)	Name (Printed/Typed) Jeremy Lee / Ph: (832)486-2510	Date 08/07/2019
Title Regulatory Coordinator		
Approved by (Signature) (Electronic Submission)	Name (Printed/Typed) Christopher Walls / Ph: (575)234-2234	Date 06/08/2020
Title Petroleum Engineer		
Office CARLSBAD		

Application approval does not warrant or certify that the applicant holds legal or equitable title to those rights in the subject lease which would entitle the applicant to conduct operations thereon.  
Conditions of approval, if any, are attached.

Title 18 U.S.C. Section 1001 and Title 43 U.S.C. Section 1212, make it a crime for any person knowingly and willfully to make to any department or agency of the United States any false, fictitious or fraudulent statements or representations as to any matter within its jurisdiction.

**GCP Rec 06/09/2020**

APPROVED WITH CONDITIONS

Approval Date: 06/08/2020

KZ

06/19/2020

SL

## PECOS DISTRICT DRILLING CONDITIONS OF APPROVAL

<b>OPERATOR'S NAME:</b>	<b>CONOCOPHILLIPS COMPANY</b>
<b>LEASE NO.:</b>	<b>NMLC0068281B</b>
<b>WELL NAME &amp; NO.:</b>	<b>ZHU 2032 BS 8H</b>
<b>SURFACE HOLE FOOTAGE:</b>	<b>2640'/S &amp; 1225'/E</b>
<b>BOTTOM HOLE FOOTAGE:</b>	<b>50'/N &amp; 330'/E</b>
<b>LOCATION:</b>	<b>Section 20, T.26 S., R.32 E., NMPM</b>
<b>COUNTY:</b>	<b>Lea County, New Mexico</b>

COA

H2S	<input checked="" type="radio"/> Yes	<input type="radio"/> No	
Potash	<input checked="" type="radio"/> None	<input type="radio"/> Secretary	<input type="radio"/> R-111-P
Cave/Karst Potential	<input type="radio"/> Low	<input checked="" type="radio"/> Medium	<input type="radio"/> High
Cave/Karst Potential	<input type="radio"/> Critical		
Variance	<input type="radio"/> None	<input checked="" type="radio"/> Flex Hose	<input type="radio"/> Other
Wellhead	<input type="radio"/> Conventional	<input checked="" type="radio"/> Multibowl	<input type="radio"/> Both
Other	<input type="checkbox"/> 4 String Area	<input type="checkbox"/> Capitan Reef	<input type="checkbox"/> WIPP
Other	<input checked="" type="checkbox"/> Fluid Filled	<input type="checkbox"/> Cement Squeeze	<input type="checkbox"/> Pilot Hole
Special Requirements	<input type="checkbox"/> Water Disposal	<input type="checkbox"/> COM	<input type="checkbox"/> Unit

### A. HYDROGEN SULFIDE

A Hydrogen Sulfide (H2S) Drilling Plan shall be activated 500 feet prior to drilling into the Cherry and Brushy Canyon formations. As a result, the Hydrogen Sulfide area must meet Onshore Order 6 requirements, which includes equipment and personnel/public protection items. If Hydrogen Sulfide is encountered, please provide measured values and formations to the BLM.

### B. CASING

#### Casing Design:

1. The 13-3/8 inch surface casing shall be set at approximately **1224 feet** (a minimum of **25 feet (Lea County)**) into the Rustler Anhydrite and above the salt) and cemented to the surface.
  - a. If cement does not circulate to the surface, the appropriate BLM office shall be notified and a temperature survey utilizing an electronic type temperature survey with surface log readout will be used or a cement bond log shall be run to verify the top of the cement. Temperature survey will be run a minimum of six hours after pumping cement and ideally between 8-10 hours after

- completing the cement job.
- b. Wait on cement (WOC) time for a primary cement job will be a minimum of **8 hours** or 500 pounds compressive strength, whichever is greater. (This is to include the lead cement)
  - c. Wait on cement (WOC) time for a remedial job will be a minimum of 4 hours after bringing cement to surface or 500 pounds compressive strength, whichever is greater.
  - d. If cement falls back, remedial cementing will be done prior to drilling out that string.

**Intermediate casing must be kept fluid filled to meet BLM minimum collapse requirement.**

2. The minimum required fill of cement behind the **9-5/8** inch intermediate casing is:

**Option 1 (Single Stage):**

- Cement to surface. If cement does not circulate see B.1.a, c-d above.  
**Wait on cement (WOC) time for a primary cement job is to include the lead cement slurry due to cave/karst or potash.  
Excess cement calculates to -50%, additional cement might be required.**

**Option 2:**

Operator has proposed a DV tool, the depth may be adjusted as long as the cement is changed proportionally. The DV tool may be cancelled if cement circulates to surface on the first stage.

- a. First stage to DV tool: Cement to circulate. If cement does not circulate off the DV tool, contact the appropriate BLM office before proceeding with second stage cement job.
  - b. Second stage above DV tool:
    - Cement to surface. If cement does not circulate, contact the appropriate BLM office.  
**Wait on cement (WOC) time for a primary cement job is to include the lead cement slurry due to cave/karst or potash.**
- ❖ In Medium Cave/Karst Areas if cement does not circulate to surface on the first two casing strings, the cement on the 3rd casing string must come to surface.
3. The minimum required fill of cement behind the **5-1/2** inch production casing is:

- Cement should tie-back at least **200 feet** into previous casing string. Operator shall provide method of verification.

### C. PRESSURE CONTROL

1. Variance approved to use flex line from BOP to choke manifold. Manufacturer's specification to be readily available. No external damage to flex line. Flex line to be installed as straight as possible (no hard bends).'
- 2.

#### Option 1:

- a. Minimum working pressure of the blowout preventer (BOP) and related equipment (BOPE) required for drilling below the surface casing shoe shall be **5000 (5M)** psi.
- b. Minimum working pressure of the blowout preventer (BOP) and related equipment (BOPE) required for drilling below the intermediate casing shoe shall be **5000 (5M)** psi.

#### Option 2:

1. Operator has proposed a multi-bowl wellhead assembly. This assembly will only be tested when installed on the surface casing. Minimum working pressure of the blowout preventer (BOP) and related equipment (BOPE) required for drilling below the surface casing shoe shall be **10,000 (10M)** psi. **Variance is approved to use a 5000 (5M) Annular which shall be tested to 2500 psi.**
  - a. Wellhead shall be installed by manufacturer's representatives, submit documentation with subsequent sundry.
  - b. If the welding is performed by a third party, the manufacturer's representative shall monitor the temperature to verify that it does not exceed the maximum temperature of the seal.
  - c. Manufacturer representative shall install the test plug for the initial BOP test.
  - d. If the cement does not circulate and one inch operations would have been possible with a standard wellhead, the well head shall be cut off, cementing operations performed and another wellhead installed.
  - e. Whenever any seal subject to test pressure is broken, all the tests in OOGO2.III.A.2.i must be followed.



## GENERAL REQUIREMENTS

The BLM is to be notified in advance for a representative to witness:

- a. Spudding well (minimum of 24 hours)
- b. Setting and/or Cementing of all casing strings (minimum of 4 hours)
- c. BOPE tests (minimum of 4 hours)

Eddy County

Call the Carlsbad Field Office, 620 East Greene St., Carlsbad, NM 88220,  
(575) 361-2822

Lea County

Call the Hobbs Field Station, 414 West Taylor, Hobbs NM 88240, (575)  
393-3612

1. Unless the production casing has been run and cemented or the well has been properly plugged, the drilling rig shall not be removed from over the hole without prior approval.
  - a. In the event the operator has proposed to drill multiple wells utilizing a skid/walking rig. Operator shall secure the wellbore on the current well, after installing and testing the wellhead, by installing a blind flange of like pressure rating to the wellhead and a pressure gauge that can be monitored while drilling is performed on the other well(s).
  - b. When the operator proposes to set surface casing with Spudder Rig
    - Notify the BLM when moving in and removing the Spudder Rig.
    - Notify the BLM when moving in the 2<sup>nd</sup> Rig. Rig to be moved in within 90 days of notification that Spudder Rig has left the location.
    - BOP/BOPE test to be conducted per Onshore Oil and Gas Order No. 2 as soon as 2nd Rig is rigged up on well.
2. Floor controls are required for 3M or Greater systems. These controls will be on the rig floor, unobstructed, readily accessible to the driller and will be operational at all times during drilling and/or completion activities. Rig floor is defined as the area immediately around the rotary table; the area immediately above the substructure on which the draw works are located, this does not include the dog house or stairway area.
3. The record of the drilling rate along with the GR/N well log run from TD to surface (horizontal well – vertical portion of hole) shall be submitted to the BLM office as well as all other logs run on the borehole 30 days from completion. If available, a digital copy of the logs is to be submitted in addition to the paper copies. The Rustler top and top and bottom of Salt are to be recorded on the Completion Report.

A. CASING

1. Changes to the approved APD casing program need prior approval if the items substituted are of lesser grade or different casing size or are Non-API. The Operator can exchange the components of the proposal with that of superior strength (i.e. changing from J-55 to N-80, or from 36# to 40#). Changes to the approved cement program need prior approval if the altered cement plan has less volume or strength or if the changes are substantial (i.e. Multistage tool, ECP, etc.). The initial wellhead installed on the well will remain on the well with spools used as needed.
2. Wait on cement (WOC) for Potash Areas: After cementing but before commencing any tests, the casing string shall stand cemented under pressure until both of the following conditions have been met: 1) cement reaches a minimum compressive strength of 500 psi for all cement blends, 2) until cement has been in place at least 24 hours. WOC time will be recorded in the driller's log. The casing integrity test can be done (prior to the cement setting up) immediately after bumping the plug.
3. Wait on cement (WOC) for Water Basin: After cementing but before commencing any tests, the casing string shall stand cemented under pressure until both of the following conditions have been met: 1) cement reaches a minimum compressive strength of 500 psi at the shoe, 2) until cement has been in place at least 8 hours. WOC time will be recorded in the driller's log. See individual casing strings for details regarding lead cement slurry requirements. The casing integrity test can be done (prior to the cement setting up) immediately after bumping the plug.
4. Provide compressive strengths including hours to reach required 500 pounds compressive strength prior to cementing each casing string. Have well specific cement details onsite prior to pumping the cement for each casing string.
5. No pea gravel permitted for remedial or fall back remedial without prior authorization from the BLM engineer.
6. On that portion of any well approved for a 5M BOPE system or greater, a pressure integrity test of each casing shoe shall be performed. Formation at the shoe shall be tested to a minimum of the mud weight equivalent anticipated to control the formation pressure to the next casing depth or at total depth of the well. This test shall be performed before drilling more than 20 feet of new hole.
7. If hardband drill pipe is rotated inside casing, returns will be monitored for metal. If metal is found in samples, drill pipe will be pulled and rubber protectors which have a larger diameter than the tool joints of the drill pipe will be installed prior to continuing drilling operations.
8. Whenever a casing string is cemented in the R-111-P potash area, the NMOCD requirements shall be followed.

## B. PRESSURE CONTROL

1. All blowout preventer (BOP) and related equipment (BOPE) shall comply with well control requirements as described in Onshore Oil and Gas Order No. 2 and API RP 53 Sec. 17.
2. If a variance is approved for a flexible hose to be installed from the BOP to the choke manifold, the following requirements apply: The flex line must meet the requirements of API 16C. Check condition of flexible line from BOP to choke manifold, replace if exterior is damaged or if line fails test. Line to be as straight as possible with no hard bends and is to be anchored according to Manufacturer's requirements. The flexible hose can be exchanged with a hose of equal size and equal or greater pressure rating. Anchor requirements, specification sheet and hydrostatic pressure test certification matching the hose in service, to be onsite for review. These documents shall be posted in the company man's trailer and on the rig floor.
3. 5M or higher system requires an HCR valve, remote kill line and annular to match. The remote kill line is to be installed prior to testing the system and tested to stack pressure.
4. If the operator has proposed a multi-bowl wellhead assembly in the APD. The following requirements must be met:
  - a. Wellhead shall be installed by manufacturer's representatives, submit documentation with subsequent sundry.
  - b. If the welding is performed by a third party, the manufacturer's representative shall monitor the temperature to verify that it does not exceed the maximum temperature of the seal.
  - c. Manufacturer representative shall install the test plug for the initial BOP test.
  - d. Whenever any seal subject to test pressure is broken, all the tests in OOGO2.III.A.2.i must be followed.
  - e. If the cement does not circulate and one inch operations would have been possible with a standard wellhead, the well head shall be cut off, cementing operations performed and another wellhead installed.
5. The appropriate BLM office shall be notified a minimum of 4 hours in advance for a representative to witness the tests.
  - a. In a water basin, for all casing strings utilizing slips, these are to be set as soon as the crew and rig are ready and any fallback cement remediation has been done. The casing cut-off and BOP installation can be initiated four hours after installing the slips, which will be approximately six hours after bumping the plug. For those casing strings not using slips, the minimum wait time before cut-off is eight hours after bumping the plug. BOP/BOPE testing can begin after cut-off or once cement reaches 500 psi compressive strength (including

lead when specified), whichever is greater. However, if the float does not hold, cut-off cannot be initiated until cement reaches 500 psi compressive strength (including lead when specified).

- b. In potash areas, for all casing strings utilizing slips, these are to be set as soon as the crew and rig are ready and any fallback cement remediation has been done. For all casing strings, casing cut-off and BOP installation can be initiated at twelve hours after bumping the plug. However, **no tests** shall commence until the cement has had a minimum of 24 hours setup time, except the casing pressure test can be initiated immediately after bumping the plug (only applies to single stage cement jobs).
- c. The tests shall be done by an independent service company utilizing a test plug not a cup or J-packer. The operator also has the option of utilizing an independent tester to test without a plug (i.e. against the casing) pursuant to Onshore Order 2 with the pressure not to exceed 70% of the burst rating for the casing. Any test against the casing must meet the WOC time for water basin (8 hours) or potash (24 hours) or 500 pounds compressive strength, whichever is greater, prior to initiating the test (see casing segment as lead cement may be critical item).
- d. The test shall be run on a 5000 psi chart for a 2-3M BOP/BOP, on a 10000 psi chart for a 5M BOP/BOPE and on a 15000 psi chart for a 10M BOP/BOPE. If a linear chart is used, it shall be a one hour chart. A circular chart shall have a maximum 2 hour clock. If a twelve hour or twenty-four hour chart is used, tester shall make a notation that it is run with a two hour clock.
- e. The results of the test shall be reported to the appropriate BLM office.
- f. All tests are required to be recorded on a calibrated test chart. A copy of the BOP/BOPE test chart and a copy of independent service company test will be submitted to the appropriate BLM office.
- g. The BOP/BOPE test shall include a low pressure test from 250 to 300 psi. The test will be held for a minimum of 10 minutes if test is done with a test plug and 30 minutes without a test plug. This test shall be performed prior to the test at full stack pressure.
- h. BOP/BOPE must be tested by an independent service company within 500 feet of the top of the Wolfcamp formation if the time between the setting of the intermediate casing and reaching this depth exceeds 20 days. This test does not exclude the test prior to drilling out the casing shoe as per Onshore Order No. 2.

C. DRILLING MUD

Mud system monitoring equipment, with derrick floor indicators and visual and audio alarms, shall be operating before drilling into the Wolfcamp formation, and shall be used until production casing is run and cemented.

D. WASTE MATERIAL AND FLUIDS

All waste (i.e. drilling fluids, trash, salts, chemicals, sewage, gray water, etc.) created as a result of drilling operations and completion operations shall be safely contained and disposed of properly at a waste disposal facility. No waste material or fluid shall be disposed of on the well location or surrounding area.

Porto-johns and trash containers will be on-location during fracturing operations or any other crew-intensive operations.

**OTA06012020**



APD ID: 10400043596

Submission Date: 08/07/2019

Highlighted data reflects the most recent changes

Operator Name: CONOCOPHILLIPS COMPANY

Well Name: ZHU 2032 BS

Well Number: 8H

[Show Final Text](#)

Well Type: OIL WELL

Well Work Type: Drill

## Section 1 - General

APD ID: 10400043596

Tie to previous NOS? N

Submission Date: 08/07/2019

BLM Office: CARLSBAD

User: Jeremy Lee

Title: Regulatory Coordinator

Federal/Indian APD: FED

Is the first lease penetrated for production Federal or Indian? FED

Lease number: NMLC0068281B

Lease Acres: 1841.48

Surface access agreement in place?

Allotted?

Reservation:

Agreement in place? YES

Federal or Indian agreement: FEDERAL

Agreement number: NMNM138329X

Agreement name:

Keep application confidential? NO

Permitting Agent? NO

APD Operator: CONOCOPHILLIPS COMPANY

Operator letter of designation:

## Operator Info

Operator Organization Name: CONOCOPHILLIPS COMPANY

Operator Address: PO Box 2197

Zip: 77252

Operator PO Box:

Operator City: Houston

State: TX

Operator Phone: (281)293-1748

Operator Internet Address:

## Section 2 - Well Information

Well in Master Development Plan? NO

Master Development Plan name:

Well in Master SUPO? NO

Master SUPO name:

Well in Master Drilling Plan? NO

Master Drilling Plan name:

Well Name: ZHU 2032 BS

Well Number: 8H

Well API Number:

Field/Pool or Exploratory? Field and Pool

Field Name: BONESPRING

Pool Name: ZIA HILLS; BONE SPRING

Is the proposed well in an area containing other mineral resources? NONE

**Operator Name:** CONOCOPHILLIPS COMPANY

**Well Name:** ZHU 2032 BS

**Well Number:** 8H

**Is the proposed well in an area containing other mineral resources?** NONE

**Is the proposed well in a Helium production area?** N    **Use Existing Well Pad?** NO    **New surface disturbance?**

**Type of Well Pad:** MULTIPLE WELL

**Multiple Well Pad Name:** ZIA

**Number:** 4

**Well Class:** HORIZONTAL

HILLS 20 PAD

**Number of Legs:** 1

**Well Work Type:** Drill

**Well Type:** OIL WELL

**Describe Well Type:**

**Well sub-Type:** INFILL

**Describe sub-type:**

**Distance to town:** 43.95 Miles

**Distance to nearest well:** 33 FT

**Distance to lease line:** 1225 FT

**Reservoir well spacing assigned acres Measurement:** 0 Acres

**Well plat:** ZHU\_2032\_8H\_C102\_20200421063100.pdf

**Well work start Date:** 10/09/2020

**Duration:** 90 DAYS

### Section 3 - Well Location Table

**Survey Type:** RECTANGULAR

**Describe Survey Type:**

**Datum:** NAD83

**Vertical Datum:** NAVD88

**Survey number:**

**Reference Datum:**

Wellbore	NS-Foot	NS Indicator	EW-Foot	EW Indicator	Twsp	Range	Section	Aliquot/Lot/Tract	Latitude	Longitude	County	State	Meridian	Lease Type	Lease Number	Elevation	MD	TVD	Will this well produce from this lease?
SHL Leg #1	2640	FSL	1225	FEL	26S	32E	20	Aliquot NESE	32.028108	-103.692547	LEA	NEW MEXI CO	NEW MEXI CO	F	NMLC0068281B	3143	0	0	
KOP Leg #1	2691	FSL	331	FEL	26S	32E	20	Aliquot SENE	32.0284245	-103.6895167	LEA	NEW MEXI CO	NEW MEXI CO	F	NMLC0068281B	-5634	8864	8777	
PPP Leg #1-1	2242	FNL	330	FEL	26S	32E	20	Aliquot SENE	32.029389	-103.689657	LEA	NEW MEXI CO	NEW MEXI CO	F	NMLC0068281B	-5032	8260	8175	

Operator Name: CONOCOPHILLIPS COMPANY

Well Name: ZHU 2032 BS

Well Number: 8H

Wellbore	NS-Foot	NS Indicator	EW-Foot	EW Indicator	Twsp	Range	Section	Aliquot/Lot/Tract	Latitude	Longitude	County	State	Meridian	Lease Type	Lease Number	Elevation	MD	TVD	Will this well produce from this lease?
EXIT Leg #1	100	FNL	330	FEL	26S	32E	17	Aliquot NENE	32.04997	-103.689665	LEA	NEW MEXICO	NEW MEXICO	F	NMLC0068281B	-6350	17084	9493	
BHL Leg #1	50	FNL	330	FEL	26S	32E	17	Aliquot NENE	32.050108	-103.689665	LEA	NEW MEXICO	NEW MEXICO	F	NMLC0068281B	-6350	17208	9493	





**APD ID:** 10400043596

**Submission Date:** 08/07/2019

Highlighted data reflects the most recent changes

**Operator Name:** CONOCOPHILLIPS COMPANY

**Well Name:** ZHU 2032 BS

**Well Number:** 8H

[Show Final Text](#)

**Well Type:** OIL WELL

**Well Work Type:** Drill

## Section 1 - Geologic Formations

Formation ID	Formation Name	Elevation	True Vertical Depth	Measured Depth	Lithologies	Mineral Resources	Producing Formation
496365	QUATERNARY	3144	22	22		NONE	N
496366	RUSTLER	1970	1174	1174	ANHYDRITE, DOLOMITE	NONE	N
496367	SALADO	1800	1344	1344	SALT	NONE	N
496368	CASTILE	810	2334	2334	SALT	NONE	N
496369	DELAWARE	-1187	4331	4331	SANDSTONE	NATURAL GAS, OIL	N
496370	CHERRY CANYON	-2110	5254	5254	SANDSTONE	NATURAL GAS, OIL	N
496371	BRUSHY CANYON	-3641	6785	6785	SANDSTONE	NATURAL GAS, OIL	N
496372	BONE SPRING	-5031	8175	8175	SANDSTONE	NATURAL GAS, OIL	N
664449	BONE SPRING 1ST	-6188	9332	9332	SANDSTONE	NATURAL GAS, OIL	Y
664450	BONE SPRING 2ND	-6913	10057	10057	SANDSTONE	NATURAL GAS, OIL	N
664451	BONE SPRING 3RD	-7398	10542	10542	LIMESTONE	NATURAL GAS, OIL	N

## Section 2 - Blowout Prevention

**Pressure Rating (PSI):** 10M

**Rating Depth:** 9493

**Equipment:** Rotating Head, Annular Preventer, Pipe/Blind Rams, Kill Lines, Choke Lines, Adapter Spool

**Requesting Variance?** YES

**Variance request:** A variance to use flexible choke line(s) from the BOP to Choke Manifold. Testing certificate is attached in "Flexhose Variance data" document. A variance to use a multibowl wellhead system. Please see attached in section 8 of drilling plan. A variance is requested to use a 5M annular and test the annular to 100% of its working pressure. The variance is requested in conjunction with the attached well control plan.

**Testing Procedure:** BOP/BOPE will be isolated from the casing and tested by an independent service company to 250 psi low and the high pressure indicated above per Onshore Order 2 requirements. BOPE controls will be installed prior to drilling under the surface casing and will be used until the completion of drilling operations. The intermediate interval and the

**Operator Name:** CONOCOPHILLIPS COMPANY

**Well Name:** ZHU 2032 BS

**Well Number:** 8H

production interval will be tested per 10M working system requirements. See attached "Drill Plan" document.

**Choke Diagram Attachment:**

ZHU\_2032\_BS\_8H\_Choke\_Manifold\_20190712072652.pdf

**BOP Diagram Attachment:**

ZHU\_2032\_BS\_8H\_BOPE\_20190712072702.pdf

**Section 3 - Casing**

Casing ID	String Type	Hole Size	Csg Size	Condition	Standard	Tapered String	Top Set MD	Bottom Set MD	Top Set TVD	Bottom Set TVD	Top Set MSL	Bottom Set MSL	Calculated casing length MD	Grade	Weight	Joint Type	Collapse SF	Burst SF	Joint SF Type	Joint SF	Body SF Type	Body SF
1	SURFACE	17.5	13.375	NEW	API	N	0	1224	0	1224			1224	J-55	54.5	OTHER - BTC	3.08	4.99	DRY	13.63	DRY	13.63
2	INTERMEDIATE	12.25	9.625	NEW	API	N	0	10089	0	9493			10089	OTHER	40	OTHER - BTC	3.11	2.06	DRY	2.29	DRY	2.29
3	PRODUCTION	8.5	5.5	NEW	API	N	0	17208	0	9493			17208	OTHER	20	OTHER - TXP	7.69	4.37	DRY	3.84	DRY	3.84

**Casing Attachments**

**Casing ID:** 1      **String Type:** SURFACE

**Inspection Document:**

**Spec Document:**

**Tapered String Spec:**

**Casing Design Assumptions and Worksheet(s):**

13.375\_54.5\_lb\_J55\_20190710134019.pdf

Operator Name: CONOCOPHILLIPS COMPANY

Well Name: ZHU 2032 BS

Well Number: 8H

### Casing Attachments

Casing ID: 2 String Type: INTERMEDIATE

Inspection Document:

Spec Document:

Tapered String Spec:

Casing Design Assumptions and Worksheet(s):

9.625\_40\_lb\_L\_80\_IC\_20190710134042.pdf

Casing ID: 3 String Type: PRODUCTION

Inspection Document:

Spec Document:

Tapered String Spec:

Casing Design Assumptions and Worksheet(s):

5.5\_TXP\_Spec\_Sheet\_20190710134130.pdf

### Section 4 - Cement

String Type	Lead/Tail	Stage Tool Depth	Top MD	Bottom MD	Quantity(sx)	Yield	Density	Cu Ft	Excess%	Cement type	Additives
SURFACE	Lead		0	824	1000	1.73	12.8	1716	200	Control Set 'C'	1.0% CaCl <sub>2</sub> , 1.0% SMS, 1.0% OGC-60, ¼ lb/sk Polyflake, ½ ppb FiberBlock
SURFACE	Tail		824	1224	660	1.33	14.8	868	200	0:1:0 'Type III'	0.5% CaCl <sub>2</sub> , ¼ lb/sk Polyflake, ½ ppb FiberBlock
INTERMEDIATE	Lead		0	6785	3280	1.73	11	5668	200	Thermal 35	10% NaCl, 0.9% CFR, 0.7% CFL-4, 0.1% LTR, 0.2% SPC-II, 0.4% CDF-4P, ¼ lb/sk

**Operator Name:** CONOCOPHILLIPS COMPANY

**Well Name:** ZHU 2032 BS

**Well Number:** 8H

String Type	Lead/Tail	Stage Tool Depth	Top MD	Bottom MD	Quantity(sx)	Yield	Density	Cu Ft	Excess%	Cement type	Additives
											Polyflake, ½ ppb FiberBlock

INTERMEDIATE	Lead	6785	724	8364	320	2.7	11	841	70	WBL	0.5% CFL-4, 0.6% LTR, 0.2% SPC-II, 0.4% CDF-4P, ¼ lb/sk Polyflake, ½ ppb FiberBlock
INTERMEDIATE	Tail		8364	10089	470	1.59	13.2	741	30	Thermal 35	10% NaCl, 0.9% CFR, 0.7% CFL-4, 0.1% LTR, 0.2% SPC-II, 0.4% CDF-4P, ¼ lb/sk Polyflake, ½ ppb FiberBlock
PRODUCTION	Lead		0	17208	0	0	0	0	0	No Lead	No Lead
PRODUCTION	Tail		7864	17208	1996	1.19	15.6	2374	10	1:1:0 'Poz:Lafarge G'	20% Silica Flour, 8% Silica Flume, 2% FWCA-H (FWC-2), 0.3% HTR, 0.5% CR-4 (MCR-4), 1% TAE-1 (SEA-1), 1% CFL-4, 0.2% CFR-5, 0.3% ASM-3 (AS-3)

## Section 5 - Circulating Medium

**Mud System Type:** Closed

**Will an air or gas system be Used?** NO

**Description of the equipment for the circulating system in accordance with Onshore Order #2:**

**Diagram of the equipment for the circulating system in accordance with Onshore Order #2:**

**Describe what will be on location to control well or mitigate other conditions:** Sufficient mud materials to maintain mud properties and meet minimum lost circulation and weight increase requirements will be kept on location at all times. See attached "Drill Plan" for additional information.

**Describe the mud monitoring system utilized:** Closed-loop mud system using steel mud containers will be on location. Mud monitoring of any changes in levels (gains or losses) will use Pressure Volume Temperature, Pason, Visual Observations. See attached "Drill Plan" for additional information.

## Circulating Medium Table

**Operator Name:** CONOCOPHILLIPS COMPANY

**Well Name:** ZHU 2032 BS

**Well Number:** 8H

Top Depth	Bottom Depth	Mud Type	Min Weight (lbs/gal)	Max Weight (lbs/gal)	Density (lbs/cu ft)	Gel Strength (lbs/100 sqft)	PH	Viscosity (CP)	Salinity (ppm)	Filtration (cc)	Additional Characteristics
1224	9493	OTHER : Brine	9.5	10.5							
0	1224	OTHER : Fresh Water	8.6	9.1							
9493	9493	OIL-BASED MUD	10.5	11.5							

## Section 6 - Test, Logging, Coring

### List of production tests including testing procedures, equipment and safety measures:

Production tests will be conducted multiple times per week, through a test separator, during first months following completion. Thereafter, tests will be less frequently. See attached "Drill Plan" for additional information.

### List of open and cased hole logs run in the well:

GR

### Coring operation description for the well:

No coring operation is planned at this time.

This well will be an Infill Horizontal well as defined in Part H of 19.15.16.7 NMAC. It will not have a unique horizontal spacing unit. It will share a horizontal spacing unit.

ConocoPhillips Company requests a variance to the requirement to run a neutron porosity log for any wells within one mile of an existing well with a neutron porosity log (vertical well, or vertical portion of a horizontal well). If there is an existing neutron log within one mile, ConocoPhillips requests to log gamma ray only. If there is not an existing neutron log within one mile, ConocoPhillips request to run a GR/N log on the vertical section of one well per pad.

## Section 7 - Pressure

**Anticipated Bottom Hole Pressure:** 4936

**Anticipated Surface Pressure:** 2847.54

**Anticipated Bottom Hole Temperature(F):** 165

**Anticipated abnormal pressures, temperatures, or potential geologic hazards?** NO

**Describe:**

**Contingency Plans geohazards description:**

**Contingency Plans geohazards attachment:**

**Operator Name:** CONOCOPHILLIPS COMPANY

**Well Name:** ZHU 2032 BS

**Well Number:** 8H

**Hydrogen Sulfide drilling operations plan required?** YES

**Hydrogen sulfide drilling operations plan:**

ZIA\_HILLS\_20\_PAD\_4\_H2S\_C\_Plan\_20190711125554.pdf

Zia\_Hills\_20\_Pad\_4\_Rig\_Layout\_20190711125808.pdf

## Section 8 - Other Information

**Proposed horizontal/directional/multi-lateral plan submission:**

ZHU\_2032\_BS\_8H\_Directional\_Plan\_20200416131050.pdf

ZHU\_2032\_BS\_8H\_Drill\_Plan\_20200421125807.pdf

**Other proposed operations facets description:**

**Other proposed operations facets attachment:**

Zia\_Hills\_20\_Pad\_4\_Drill\_Waste\_Containment\_20190711130956.pdf

ZHU\_2032\_BS\_8H\_Kelly\_Cock\_20190712084212.pdf

ZHU\_2032\_BS\_5H\_8H\_Gas\_Capture\_Plan\_20190712084233.pdf

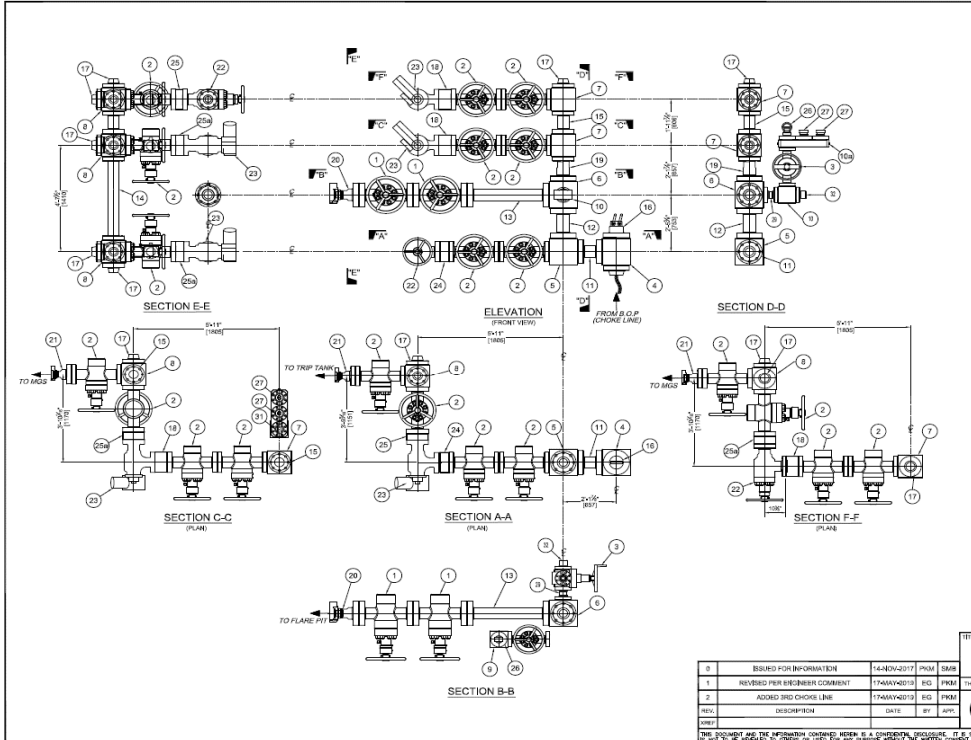
**Other Variance attachment:**

Zia\_Hills\_20\_Pad\_4\_Flexhose\_Variance\_20190711131033.pdf

Wild\_Well\_Control\_Plan\_20190711131059.pdf

Wellhead\_diagram\_3\_String\_\_20200217135248.pdf

Choke Manifold 10M psi

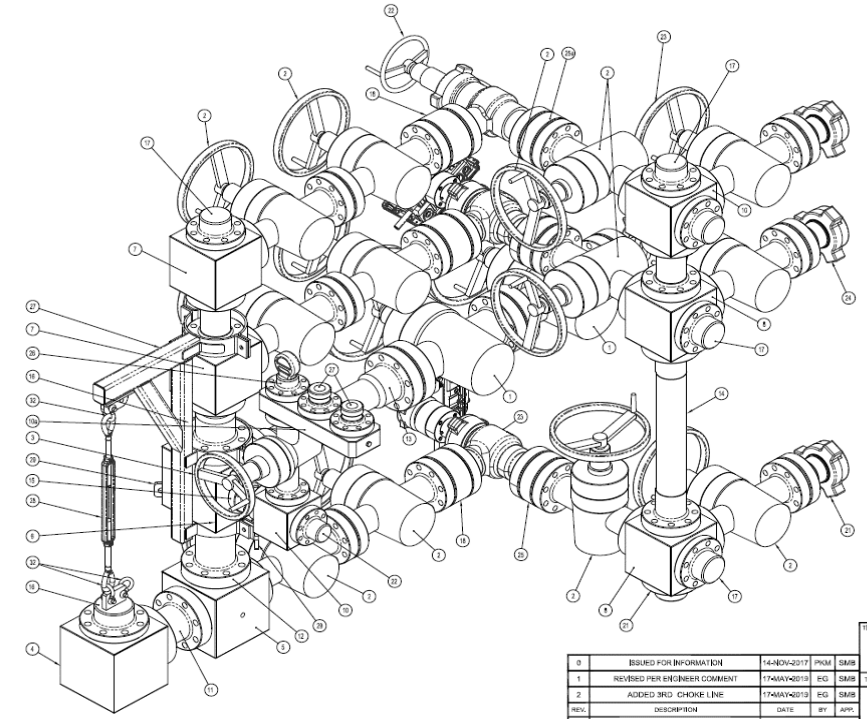


PN NO.	QTY.	DESCRIPTION	LENGTH		WT.
			FT.	IN.	
1	2	GATE VALVE 4-1/16" x 10K			798
2	12	GATE VALVE 3-1/16" x 10K			2813
3	1	GATE VALVE 3-1/16" x 10K			116
4	1	STUBBED BLOCK (3WAY) 4-1/16"x10K			810
5	1	3WAY BLOCK w 2 WAY OF 4-1/16"x10K & 1 WAY OF 3-1/16"x10K			510
6	1	4WAY BLOCK w 3 WAY OF 4-1/16"x10K & 1 WAY OF 3-1/16"x10K			800
7	2	STUBBED BLOCK (3WAY) 3-1/16"x10K			668
8	3	3WAY BLOCK 3-1/16"x10K			180
9	1	STUBBED BLOCK (3WAY) 3-1/16"x10K			80
10	1	TEE, STUBBED, 2 1/16" X 1/16" X 1/16" API-A 10M			80
10a	1	BLOCK TRANSMITTER, 2 1/16" API 10M			11.34
11	1	PIPE SPOOL 4-1/16" x 10K			219
12	1	PIPE SPOOL 4-1/16" x 10K			224
13	1	PIPE SPOOL 4-1/16" x 10K			287
14	1	PIPE SPOOL 3-1/16" x 10K			195
15	2	PIPE SPOOL 3-1/16" x 10K			108
16	1	BLIND FLANGE 4-1/16" x 10K			25
+ ADD LIFTING PLATE WITH 22 TIE HOLES FOR SHACKLE					
17	6	BLIND FLANGE 4-1/16" x 10K			80
18	2	SPACER FLANGE 3-1/16"x10K			110
19	1	PIPE SPOOL w 1 END 4-1/16"x10K FLANGE & OTHER END 3-1/16"x10K FLANGE			179
20	1	PUB-JOINT w ONE END 4-1/16"x10K FLANGE & OTHER END 4" H.O. 1500 10000 CWP HAMMER UNION MALE			169
21	3	PUB-JOINT w ONE END 3-1/16"x10K FLANGE & OTHER END 3" H.O. 1500 10000 CWP HAMMER UNION MALE			180
22	1	MANUAL CHOKE 3-1/16"x10K (CAMERON)			231
23	2	ELECTRIC CHOKE 10K MW (CAMERON)			1008
24	1	SPACER FLANGE 3-1/16"x10K			184
25	1	SPACER FLANGE 3-1/16"x10K			73
25a	2	SPACER FLANGE 3-1/16"x10K			146
26	1	PRESSURE GAUGE 3-1/16" (CAMERON)			40
26a	1	4-1/16"x10K BOTTOM FLANGE			60
27	2	BLIND FLANGE 3-1/16"x10K			16
28	1	TURNBUCKLE, 1" x 18" CROSBY HG208 100110H			80
29	1	SPOOL, SPACER, 2 1/16" API-A 10M			
30	2	FLANGE, BLIND, TARGET 2 1/16" API-A 10M			
31	1	GAUGE, FLANGED, API 10M 3-1/16" (CAMERON)			
32	1	FLANGE, BLIND, TARGET 2 1/16" API-A 10M			

ESTMD TOTAL ASSY WT: 10761 #

REV.	DESCRIPTION	DATE	BY	APP.
0	ISSUED FOR INFORMATION	14-NOV-2017	PKM	SMB
1	REVERSED PER ENGINEER COMMENT	17-MAY-2019	EG	SMB
2	ADDED 3RD CHOKE LINE	17-MAY-2019	EG	PKM

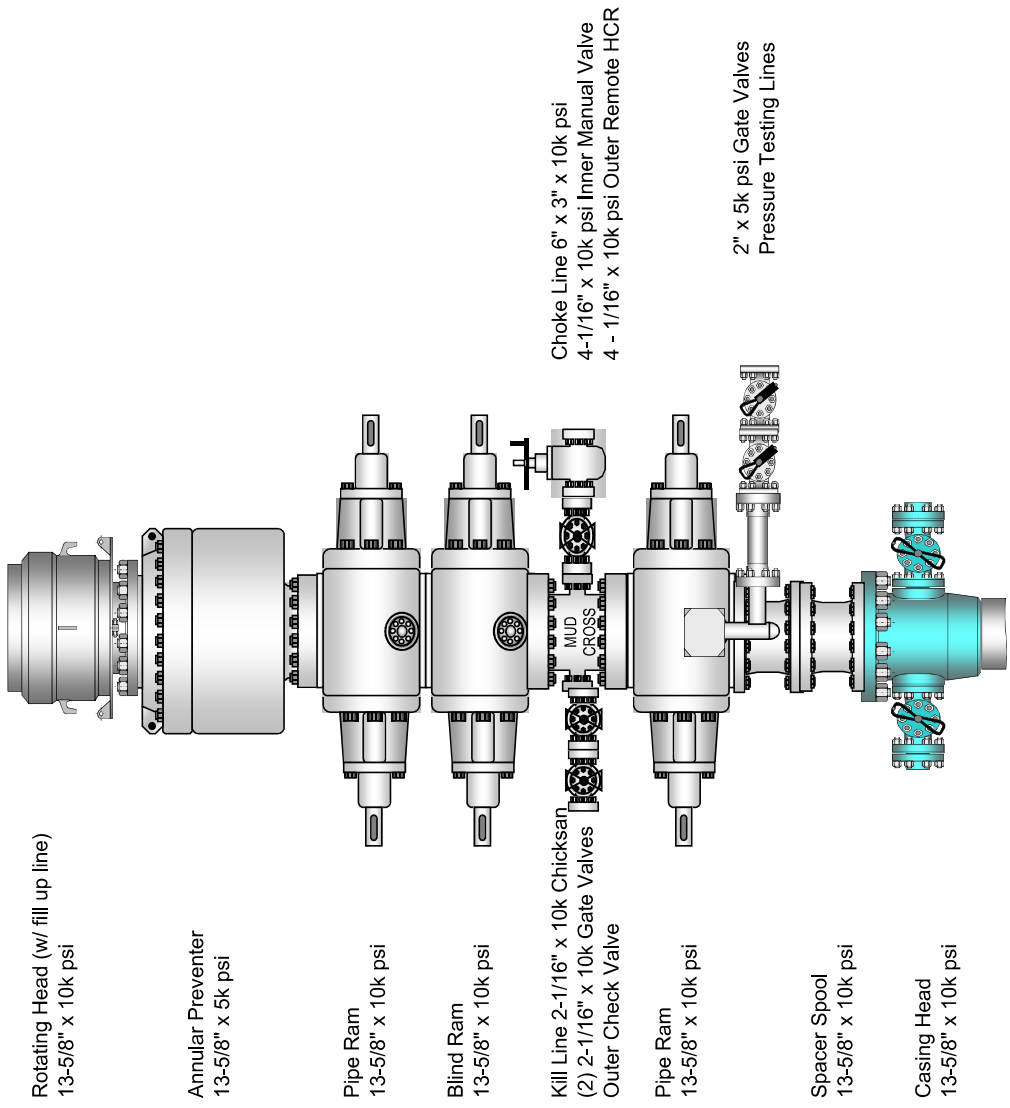
TITLE: COPYRIGHTED RIG 894  
 4-1/16" x 3-1/16" 10M CHOKE MANIFOLD LAYOUT  
 THIS DRAWING IS SHOWN TRUE SCALE ONLY WHEN PRINTED ON THIS SIZE PAPER  
 SHEET NO. 2 OF 2  
 NABORS  
 DATE: 15-OCT-19  
 SCALE: NTS  
 SHEET NO. 2 OF 2  
 18310-0402



REV.	DESCRIPTION	DATE	BY	APP.
0	ISSUED FOR INFORMATION	14-NOV-2017	PKM	SMB
1	REVERSED PER ENGINEER COMMENT	17-MAY-2019	EG	SMB
2	ADDED 3RD CHOKE LINE	17-MAY-2019	EG	SMB

TITLE: COPYRIGHTED RIG 894  
 4-1/16" x 3-1/16" 10M CHOKE MANIFOLD LAYOUT  
 THIS DRAWING IS SHOWN TRUE SCALE ONLY WHEN PRINTED ON THIS SIZE PAPER  
 SHEET NO. 2 OF 2  
 NABORS  
 DATE: 15-OCT-19  
 SCALE: NTS  
 SHEET NO. 2 OF 2  
 18310-0402

**BOPE Configuration & Specifications**  
**13-5/8" x 10,000 psi System**






For the latest performance data, always visit our website: [www.tenaris.com](http://www.tenaris.com)

**TXP® BTC**

Printed on: 06/24/2019



Outside Diameter	5.500 in.	Min. Wall Thickness	87.5%	(*) Grade P110	
Wall Thickness	0.415 in.	Connection OD Option	REGULAR	<b>COUPLING</b>	<b>PIPE BODY</b>
Grade	P110*	Drift	API Standard	Body: White	1st Band: White
		Type	Casing	1st Band: -	2nd Band: -
				2nd Band: -	3rd Band: -
				3rd Band: -	4th Band: -



PIPE BODY DATA					
GEOMETRY					
Nominal OD	5.500 in.	Nominal Weight	23 lbs/ft	Drift	4.545 in.
Nominal ID	4.670 in.	Wall Thickness	0.415 in.	Plain End Weight	22.56 lbs/ft
OD Tolerance	API				
PERFORMANCE					
Body Yield Strength	729 x1000 lbs	Internal Yield	14530 psi	SMYS	110000 psi
Collapse	14540 psi				
CONNECTION DATA					
GEOMETRY					
Connection OD	6.200 in.	Coupling Length	9.450 in.	Connection ID	4.658 in.
Make-up Loss	4.204 in.	Threads per in	5	Connection OD Option	REGULAR
PERFORMANCE					
Tension Efficiency	100.0 %	Joint Yield Strength	729,000 x1000 lbs	Internal Pressure Capacity <sup>[1]</sup>	14530,000 psi
Compression Efficiency	100 %	Compression Strength	729,000 x1000 lbs	Max. Allowable Bending	92 °/100 ft
External Pressure Capacity	14540,000 psi				
MAKE-UP TORQUES					
Minimum	12980 ft-lbs	Optimum	14420 ft-lbs	Maximum	15860 ft-lbs
OPERATION LIMIT TORQUES					
Operating Torque	24200 ft-lbs	Yield Torque	26900 ft-lbs		

**Notes**

This connection is fully interchangeable with:

TXP® BTC - 5.5 in. - 15.5 / 17 / 20 / 26 lbs/ft

[1] Internal Pressure Capacity related to structural resistance only. Internal pressure leak resistance as per section 10.3 API 5C3 / ISO 10400 - 2007.

Datasheet is also valid for Special Bevel option when applicable - except for Coupling Face Load, which will be reduced. Please contact a local Tenaris technical sales representative.

For further information on concepts indicated in this datasheet, download the Datasheet Manual from [www.tenaris.com](http://www.tenaris.com)

Tenaris has issued this document for general information only, and the information in this document, including, without limitation, any pictures, drawings or designs ("Information") is not intended to constitute professional or any other type of advice or recommendation and is provided on an "as is" basis. No warranty is given. Tenaris has not independently verified any information –if any- provided by the user in connection with, or for the purpose of, the Information contained hereunder. The use of the Information is at user's own risk and Tenaris does not assume any responsibility or liability of any kind for any loss, damage or injury resulting from, or in connection with any Information contained hereunder or any use thereof. The Information in this document is subject to change or modification without notice. Tenaris's products and services are subject to Tenaris's standard terms and conditions or otherwise to the terms resulting from the respective contracts of sale or services, as the case may be, between petitioner and Tenaris. For more complete information please contact a Tenaris's representative or visit our website at [www.tenaris.com](http://www.tenaris.com) . ©Tenaris 2019, All rights reserved.

TXP® BTC

Printed on: 22/04/2019

Min. Wall Thickness	87.5%	(*)GradeJ55 (Casing)	
Outside Diameter	13.375 in.	Connection OD REGULAR Option	Coupling Pipe Body
Wall Thickness	0.380 in.	Drift	API Standard
Grade	J55 (Casing)*	Type	Casing
			Body: Bright Green
			1st Band: Bright Green
			1st Band: White
			2nd Band: -
			2nd Band: -
			3rd Band: -
			3rd Band: -
			4th Band: -

#### PIPE BODY DATA

##### Geometry

Nominal OD	13.375 in.	Nominal Weight	54.5 lbs/ft	Drift	12.459 in.
Nominal ID	12.615 in.	Wall Thickness	0.380 in.	Plain End Weight	52.79 lbs/ft
OD Tolerance	API				

##### Performance

Body Yield Strength	853 x1000 lbs	Internal Yield	2730 psi	SMYS	55000 psi
Collapse	1130 psi				

#### CONNECTION DATA

##### Geometry

Connection OD	14.375 in.	Coupling Length	10.825 in.	Connection ID	12.603 in.
Make-up Loss	4.891 in.	Threads per in	5	Connection OD Option	REGULAR

##### Performance

Tension Efficiency	100.0 %	Joint Yield Strength	853.000 x1000 lbs	Internal Pressure Capacity [1]	2730.000 psi
Compression Efficiency	100 %	Compression Strength	853.000 x1000 lbs	Max. Allowable Bending	19 °/100 ft
External Pressure Capacity	1130.000 psi				

##### Make-Up Torques

Minimum	21610 ft-lbs	Optimum	24010 ft-lbs	Maximum	26410 ft-lbs
---------	--------------	---------	--------------	---------	--------------

##### Operation Limit Torques

Operating Torque	54300 ft-lbs	Yield Torque	68700 ft-lbs
------------------	--------------	--------------	--------------

## Notes

This connection is fully interchangeable with:

TXP® BTC - 13.375 in. - 61 / 68 / 72 lbs/ft

[1] Internal Pressure Capacity related to structural resistance only. Internal pressure leak resistance as per section 10.3 API 5C3 / ISO 10400 - 2007.

Datasheet is also valid for Special Bevel option when applicable - except for Coupling Face Load, which will be reduced. Please contact a local Tenaris technical sales representative.

For further information on concepts indicated in this datasheet, download the Datasheet Manual from [www.tenaris.com](http://www.tenaris.com)

---

Tenaris has issued this document for general information only, and the information in this document, including, without limitation, any pictures, drawings or designs ("Information") is not intended to constitute professional or any other type of advice or recommendation and is provided on an "as is" basis. No warranty is given. Tenaris has not independently verified any information -if any- provided by the user in connection with, or for the purpose of, the Information contained hereunder. The use of the Information is at user's own risk and Tenaris does not assume any responsibility or liability of any kind for any loss, damage or injury resulting from, or in connection with any Information contained hereunder or any use thereof. The Information in this document is subject to change or modification without notice. Tenaris's products and services are subject to Tenaris's standard terms and conditions or otherwise to the terms resulting from the respective contracts of sale or services, as the case may be, between petitioner and Tenaris. For more complete information please contact a Tenaris's representative or visit our website at [www.tenaris.com](http://www.tenaris.com) . ©Tenaris 2017. All rights reserved.

TXP® BTC

Printed on: 22/04/2019

Min. Wall Thickness	87.5%	(*)GradeL80-IC			
Outside Diameter	9.625 in.	Connection OD	REGULAR	Coupling	Pipe Body
Wall Thickness	0.395 in.	Drift	API Standard	Body: Red	1st Band: Red
Grade	L80-IC*	Type	Casing	1st Band: Brown	2nd Band: Brown
				2nd Band: -	3rd Band: Pale Green
				3rd Band: -	4th Band: -

**PIPE BODY DATA**

**Geometry**

Nominal OD	9.625 in.	Nominal Weight	40 lbs/ft	Drift	8.679 in.
Nominal ID	8.835 in.	Wall Thickness	0.395 in.	Plain End Weight	38.97 lbs/ft
OD Tolerance	API				

**Performance**

Body Yield Strength	916 x1000 lbs	Internal Yield	5750 psi	SMYS	80000 psi
Collapse	3870 psi				

**CONNECTION DATA**

**Geometry**

Connection OD	10.625 in.	Coupling Length	10.825 in.	Connection ID	8.823 in.
Make-up Loss	4.891 in.	Threads per in	5	Connection OD Option	REGULAR

**Performance**

Tension Efficiency	100.0 %	Joint Yield Strength	916.000 x1000 lbs	Internal Pressure Capacity [1]	5750.000 psi
Compression Efficiency	100 %	Compression Strength	916.000 x1000 lbs	Max. Allowable Bending	38 °/100 ft
External Pressure Capacity	3870.000 psi				

**Make-Up Torques**

Minimum	18860 ft-lbs	Optimum	20960 ft-lbs	Maximum	23060 ft-lbs
---------	--------------	---------	--------------	---------	--------------

**Operation Limit Torques**

Operating Torque	35600 ft-lbs	Yield Torque	43400 ft-lbs
------------------	--------------	--------------	--------------

**Notes**

This connection is fully interchangeable with:

TXP® BTC - 9,625 in. - 36 / 43,5 / 47 / 53,5 / 58,4 lbs/ft

[1] Internal Pressure Capacity related to structural resistance only. Internal pressure leak resistance as per section 10.3 API 5C3 / ISO 10400 - 2007.

Datasheet is also valid for Special Bevel option when applicable - except for Coupling Face Load, which will be reduced. Please contact a local Tenaris technical sales representative.

For further information on concepts indicated in this datasheet, download the Datasheet Manual from [www.tenaris.com](http://www.tenaris.com)

---

Tenaris has issued this document for general information only, and the information in this document, including, without limitation, any pictures, drawings or designs ("Information") is not intended to constitute professional or any other type of advice or recommendation and is provided on an "as is" basis. No warranty is given. Tenaris has not independently verified any information -if any- provided by the user in connection with, or for the purpose of, the Information contained hereunder. The use of the Information is at user's own risk and Tenaris does not assume any responsibility or liability of any kind for any loss, damage or injury resulting from, or in connection with any Information contained hereunder or any use thereof. The Information in this document is subject to change or modification without notice. Tenaris's products and services are subject to Tenaris's standard terms and conditions or otherwise to the terms resulting from the respective contracts of sale or services, as the case may be, between petitioner and Tenaris. For more complete information please contact a Tenaris's representative or visit our website at [www.tenaris.com](http://www.tenaris.com) . ©Tenaris 2017. All rights reserved.



**H<sub>2</sub>S Contingency Plan**  
November 2016

H<sub>2</sub>S Contingency Plan Holders:

Attached is an H<sub>2</sub>S Contingency Plan for COPC Permian Drilling working in the West Texas and Southeastern New Mexico areas operated by ConocoPhillips Company.

If you have any question regarding this plan, please call Matt Oster (830) 583-1297, or Ryan Vacarella (985) 217-7594.

## **Table of Contents**

### **Section**

#### **I. Purpose**

#### **II. Scope**

#### **III. Procedures**

#### **IV. Emergency Equipment and Maintenance**

Emergency Equipment Suppliers

General Information

H2S Safety Equipment and Monitoring Systems

#### **V. Emergency Call List**

#### **VI. Public/Media Relations**

#### **VII. Public Notification/Evacuation**

#### **VIII. Forms/Reports**





# **HYDROGEN SULFIDE (H<sub>2</sub>S) OPERATIONS**

Contingency Plan  
For  
Permian Drilling Operations

ConocoPhillips Company

## Mid-Continent Business Unit Permian Asset Area

### **I. PURPOSE**

The purpose of this Contingency Plan is to provide an organized plan of action for alerting and protecting the public following the release of a potentially hazardous volume of hydrogen sulfide. This plan prescribes mandatory safety procedures to be followed in the event of a release of H<sub>2</sub>S into the atmosphere from exploration and production operations included in the scope of this plan. The extent of action taken will be determined by the supervisor and will depend on the severity and extent of H<sub>2</sub>S release. Release of H<sub>2</sub>S must be reported to the Drilling Superintendent and documented on the IADC and in Wellview.

### **II. SCOPE**

This Contingency plan shall cover the West Texas and Southeastern New Mexico areas, which contain H<sub>2</sub>S gas and could result in a release where the R.O.E. is greater than 100 ppm at 50' and less than 3000' and does not include a public area and 500 ppm R.O.E. does not include a public road. Radius of exposure is defined as the maximum distance from the source of release that a specified calculated average concentration of H<sub>2</sub>S could exist under specific weather conditions.

### III. PROCEDURES

#### First Employee on Scene

\_\_\_ Assess the incident and ensure your own safety.

Note the following:

- \_\_\_ Location of the incident.
- \_\_\_ Nature of the incident.
- \_\_\_ Wind direction and weather conditions.
- \_\_\_ Other assistance that may be needed.

\_\_\_ Call local supervisory personnel (refer to Section V: Emergency Call List) until personal contact is made with a person on the list.

\_\_\_ Perform emergency assessment and response as needed. The response may include rescue and/or evacuation of personnel, shutting in a system and/or notification of nearby residents/public (refer to Section VII: Public Notification/Evacuation).

\_\_\_ Secure the site.

\_\_\_ Follow the direction of the On-scene Incident Commander (first ConocoPhillips supervisor arriving on-scene).

#### First Supervisor on Scene (ConocoPhillips On-scene Incident Commander)

\_\_\_ Becomes ConocoPhillips' On-scene Incident Commander upon arrival to location.

\_\_\_ Follow the principles of the **D.E.C.I.D.E.** process below to assess the incident. (Note wind direction and weather conditions and ensure everyone's safety).

- DETECT** the problem
- ESTIMATE** likely harm without intervention
- CHOOSE** response objectives
- IDENTIFY** action options
- DO** the best option
- EVALUATE** the progress

\_\_\_\_\_ Complete the Preliminary Emergency Information Sheet (refer to Section VIII: Forms/Reports).

\_\_\_\_\_ Call your supervisor (refer to Section V: Emergency Call List).

\_\_\_\_\_ Perform emergency response as necessary. (This may include notification & evacuation of all personnel and/or nearby residents/public (refer to Section VII: Public Notification/Evacuation), requesting assistance from ConocoPhillips personnel or outside agencies (refer to Section V: Emergency Call List) and obtaining any safety equipment that may be required (refer to Section IV: Emergency Equipment and Maintenance).

\_\_\_\_\_ Notify appropriate local emergency response agencies of the incident as needed. Also notify the appropriate regulatory agencies. (refer to Section V: Emergency Call List).

\_\_\_\_\_ Ensure site security.

\_\_\_\_\_ Set barricades and /or warning signs at or beyond the calculated 100 ppm H<sub>2</sub>S radius of exposure (ROE). All manned barricades must be equipped with an H<sub>2</sub>S monitor and a 2-way radio.

\_\_\_\_\_ Set roadblocks and staging area as determined.

\_\_\_\_\_ Establish the Incident Command Structure by designating appropriate on-scene response personnel as follows:

Recording Secretary	_____
Public Information Officer	_____
Safety/Medical Officer	_____
Decontamination Officer	_____

\_\_\_\_\_ Have the "Recording Secretary" begin documenting the incident on the "Incident Log" (refer to Section VIII: Forms/Reports).

\_\_\_\_\_ If needed, request radio silence on all channels that use your radio tower stating that, until further notice, the channels should be used for emergency communications only.

\_\_\_\_\_ Perform a Site Characterization and designate the following:

Hot Zone	--	Hazardous Area
Warm Zone	--	Preparation & Decontamination Area
Cold Zone	--	Safe Area

AND

On-Scene Incident Command Post	(Cold Zone)
Public Relations Briefing Area	(Cold Zone)
Staging Area	(Cold Zone)
Triage Area	(Cold Zone)
Decontamination Area	(Warm Zone)

\_\_\_\_ Refer all media personnel to ConocoPhillips' On-Scene Public Information Officer (refer to Section VI: Public Media Relations).

\_\_\_\_ Coordinate the attempt to stop the release of H<sub>2</sub>S. You should consider closing upstream and downstream valves to shut-off gas supply sources, and/or plugging or clamping leaks. Igniting escaping gas to reduce the toxicity hazard should be used **ONLY AS A LAST RESORT**. (It must first be determined if the gas can be safely ignited, taking into consideration if there is a possibility of a widespread flammable atmosphere.)

\_\_\_\_ Once the emergency is over, return the situation to normal by:

Confirming the absence of H<sub>2</sub>S and combustible gas throughout the area,

Discontinuing the radio silence on all channels, stating that the emergency incident is over,

Removing all barricades and warning signs,

Allowing evacuees to return to the area, and

Advising all parties previously notified that the emergency has ended.

\_\_\_\_ Ensure the proper regulatory authorities/agencies are notified of the incident (refer to Section V: Emergency Call List).

\_\_\_\_ Clean up the site. (Be sure all contractor crews have had appropriate HAZWOPER training.)

\_\_\_\_ Report completion of the cleanup to the Asset Environmentalist. (Environmentalist will report this to the proper State and/or Federal agencies.)

\_\_\_\_\_ Fill out all required incident reports and send originals to the Safety Department. (Keep a copy for your records.)

- Company employee receiving occupational injury or illnesses.
- Company employee involved in a vehicle accident while driving a company vehicle.
- Company property that is damaged or lost.
- Accident involving the public or a contractor; includes personal injuries, vehicle accidents, and property damage. Also includes any situation, which could result in a claim against the Company.
- Hazardous Material Spill/Release Report Form
- Emergency Drill Report

\_\_\_\_\_ Assist the Safety Department in the investigation of the incident. Review the factors that caused or allowed the incident to occur, and modify operating, maintenance, and/or surveillance procedures as needed. Make appropriate repairs and train or retrain employees in the use and operation of the system.

\_\_\_\_\_ If this incident was simulated for practice in emergency response, complete the Emergency Drill Report found in Section VIII: Forms/Reports and submit a copy to the Drilling Manager. (Keep one copy in area files to document exercising of the plan.)

## **Emergency Procedures Responsibility**

In the event of a release of potentially hazardous amounts of H<sub>2</sub>S, all personnel will immediately proceed upwind/ crosswind to the nearest designated briefing area. The COPC Drilling Rep. will immediately, upon assessing the situation, set this into action by taking the proper procedures to contain the gas and notify appropriate people and agencies.

1. In an emergency situation, the Drilling Rep. on duty will have complete responsibility and will take whatever action is deemed necessary in an emergency situation to insure the personnel's safety, to protect the well and to prevent property damage.
2. The Toolpusher will assume all responsibilities of the Drilling Rep. in an emergency situation in the event the Drilling Rep. becomes incapacitated.
3. Advise each contractor, service company, and all others entering the site that H<sub>2</sub>S may be encountered and the potential hazards that may exist.
4. Authorize the evacuation of local residents if H<sub>2</sub>S threatens their safety.
5. Keep the number of persons on location to a minimum during hazardous operations.
6. Direct corrective actions to control the flow of gas.
7. Has full responsibility for igniting escaping gas to reduce the toxicity hazard.

This should be used **ONLY AS A LAST RESORT.**

## **IV. EMERGENCY EQUIPMENT and MAINTENANCE**

### **Emergency Equipment Suppliers**

#### **DXP/ Safety International – Odessa, Tx.**

H <sub>2</sub> S monitors	432.580.3770
Breathing air includes cascade systems	
First aid and medical supplies	
Safety equipment	
H <sub>2</sub> S Specialist	

#### **Total Safety US Odessa, Tx/ Hobbs, NM**

H <sub>2</sub> S monitors	432.561.5049 Odessa
Breathing air includes cascade systems	575.392.2973 Hobbs
First aid and medical supplies	
Safety equipment	

#### **DXP/ Indian Fire & Safety – Hobbs, NM**

H <sub>2</sub> S monitors	575.393.3093
Breathing air including cascade systems trailer mounted	
30 minute air packs	
Safety Equipment	

#### **TC Safety – Odessa, Tx.**

H <sub>2</sub> S monitors	432.413.8240
Cascade systems trailer mounted	
30 minute air packs	
Safety Equipment	
H <sub>2</sub> S Specialist	

#### **Secorp Industries – Odessa, Tx.**

H <sub>2</sub> S Monitor Systems	432.614.2565
Cascade Systems	
H <sub>2</sub> S Specialist	
H <sub>2</sub> S, CPR, First Aid Training	



## **Emergency Equipment and Maintenance (continued)**

### **General Information**

Materials used for repair should be suitable for use where H<sub>2</sub>S concentrations exceed 100 ppm. In general, carbon steels having low-yield strengths and a hardness below RC-22 are suitable. The engineering staff should be consulted if any doubt exists on material specifications.

Appropriate signs should be maintained in good condition at location entrance and other locations as specified in Texas Rule 36 and NMOCD Rule 118.

All notification lists should be kept current with changes in names, telephone numbers, etc.

All shutdown devices, alarms, monitors, breathing air systems, etc., should be maintained in accordance with applicable regulations.

All personnel working in H<sub>2</sub>S areas shall have received training on the hazards, characteristics, and properties of H<sub>2</sub>S, and on procedures and safety equipment applicable for use in H<sub>2</sub>S areas.

## **H2S Safety Equipment and Monitoring Systems**

An H2S emergency response package will be maintained at locations requiring H2S monitoring. The package will contain at a minimum the following:

3 – Fixed H2S sensors located as follows:

- 1 – on the rig floor
- 1 – at the Bell Nipple
- 1 – at the Shale Shaker or Flowline

1 – Entrance Warning Sign located at the main entrance to the location, with warning signs and colored flags to determine the current status for entry into the location.

2 – Windsocks that are clearly visible.

1 – Audible warning system located on rig floor

2 – Visual warning systems (Beacon Lights)

- 1 – Located at the rig floor
- 1 – Located in the mud mixing room

**Note: All alarms (audible and visual) should be set to alarm at 10 ppm.**

2 - Briefing areas clearly marked

- 2 - SCBA's at each briefing area
- 1- SCBA located at the Drilling Reqs office

**Note:**

- 1. All SCBA's must be positive pressure type only!!!**
- 2. All SCBA's must either be Scott or Drager brand.**
- 3. All SCBA's face pieces should be size large, unless otherwise specified by the Drilling Supervisor.**

5 – Emergency Escape Paks located at Top Doghouse.

Note: Ensure provisions are included for any personnel working above rig floor in derrick.

1 – Tri or Quad gas monitor located at the Drilling Reps office. This will be used to determine if the work area is safe to re-enter prior to returning to work following any alarm.

### **V. EMERGENCY CALL LIST:**

The following is a priority list of personnel to contact in an emergency situation:

<b>Supervisory Personnel</b>	<b>Office No.</b>	<b>Cellphone</b>
Drilling Supt. (Unconventional) <b>Scott Nicholson</b>	432.688.9065	432.230.8010
Field Superintendents: <b>Clint Case.</b>	432.688.6878	940.231.2839
Safety Support: <b>Matt Oster</b> <b>Ryan Vaccarella</b>	830.583.1245 985.217.7594	601.540.6988 NA
Supt Operations-SEMN/Shale Mike Neuschafer	432.688.6834	713.419.9919
MCBU Safety Coordinator <b>James Buzan</b>	432.688.6860	832.630.4320
Manger GCBU/MCBU D & C <b>Seth Crissman</b>	832.486.6191	832.513.9308

### **EMERGENCY CALL LIST: State Officials**

#### **Regulatory Agencies**

**Texas Railroad Commission (District 8)**  
Midland, Texas

Office: 432.684.5581

**New Mexico Oil Conservation Commission**  
P. O. Box 1980  
Hobbs, New Mexico 88240-1980

Office: 575.393.6161

**Bureau of Land Mngt.**

Carlsbad Field Office  
620 E. Greene St.  
Carlsbad, NM 88220

Office: 575.234.5972  
Fax: 575.885.9264

**EMERGENCY CALL LIST: Local Officials**

**Refer to the Location Information Sheet**

**Note:** The LIS should include any area residents (i.e. rancher's house, etc)

**VI. Public Media Relations**

The **Public Information Officer** becomes the ConocoPhillips on-scene contact (once designated by the Phillips On-Scene Incident Commander).

Confers with Houston Office's Human Relations Representative, who is responsible for assisting in the coordination of local public relations duties.

Answer media questions honestly and **only with facts**, do not speculate about the cause, amount of damage, or the potential impact of the incident of the community, company, employees, or environment. (This information will be formally determined in the incident investigation.)

If you are comfortable answering a question or if you are unsure of the answer, use terms such as the following:

- "I do not know. I will try to find out."
- I am not qualified to answer that question, but I will try to find someone who can."
- "It is under investigation."

**Note:**

**Do Not** Say "No Comment." (This implies a cover-up.)

**Do Not Disclose Names of Injured or Dead!** Confer with the Houston Office's Human Relations Representative, who is responsible for providing that information.

## VII. Public Notification/Evacuation

### Alert and/or Evacuate People within the Exposure Area

1. Public Notification – If the escape of gas could result in a hazard to area residents, the general public, or employees, the person **first** observing the leak should take **immediate** steps to cause notification of any nearby residents. The avoidance of injury or loss of life should be of prime consideration and given top priority in all cases. If the incident is of such magnitude, or at such location as to create a hazardous situation, local authorities will be requested to assist in the evacuation and roadblocks of the designated area until the situation can be returned to normal.

Note: Bilingual employees may be needed to assist in notification of residents.

2. Evacuation Procedures – Evacuation will proceed upwind from the source of the release of H<sub>2</sub>S. Extreme caution should be exercised in order to avoid any depressions or low-lying areas in the terrain. The public area within the radius of exposure should be evacuated in a southwesterly and southeasterly direction so as to avoid the prevailing southern wind direction.

Roadblocks and the staging area should be established as necessary for current wind conditions.

**Note:** In all situations, consideration should be given to wind direction and weather conditions. H<sub>2</sub>S is heavier than air and can settle in low spots. Shifts in wind direction can also change the location of possible hazardous areas.

## VIII.      FORMS & REPORTS

- I. Incident Log
  
- II. Preliminary Emergency Information Sheet
  
- III. Emergency Drill Report
  
- IV. Onshore Hazardous Material Spill/Release Report Form
  
- V. Immediate Report of Occupational Injury or Illness  
Report of Accident-Public Contractor  
Report of Loss or Damage to Company Property  
Report of Automotive Incident

0 100 200

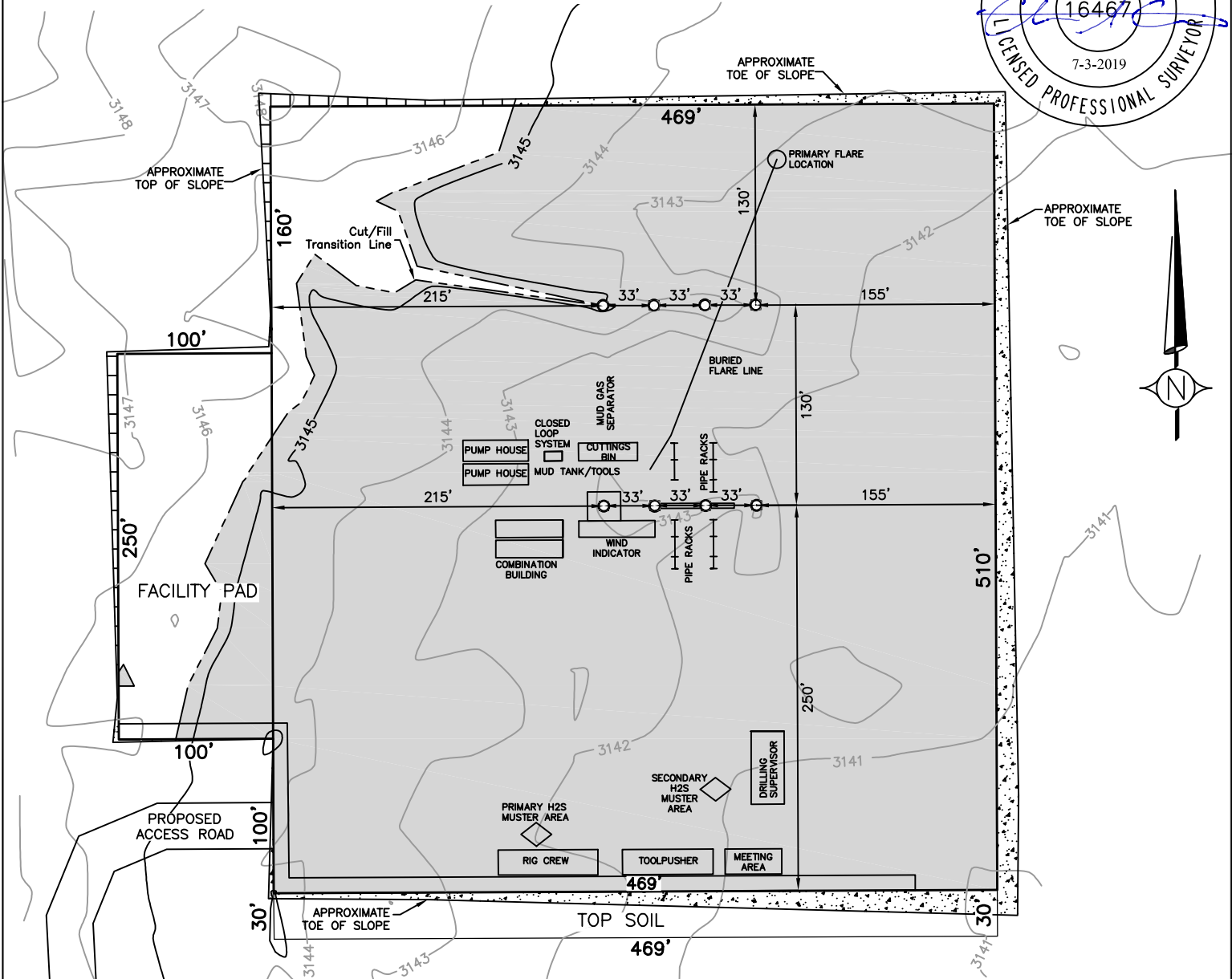
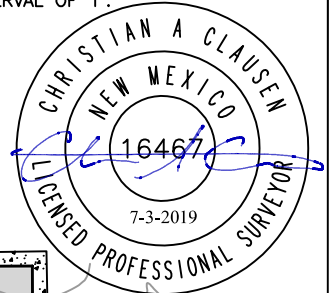


**PROJECT BENCHMARK**

1/2" IRON ROD WITH CAP  
 STAMPED "ROCKIN' CT" SET  
 N: 373,288.80  
 E: 733,506.82  
 ELEV: 3194.73'

**SECTION 20, T. 26 S., R. 32 E.  
 LEA COUNTY, NEW MEXICO**

**CERTIFICATE**  
 THE TOPOGRAPHIC INFORMATION  
 DEPICTED HEREON WAS DEVELOPED  
 USING PROCEDURES WHICH ENSURE  
 COMPLIANCE WITH NATIONAL MAP  
 ACCURACY STANDARDS FOR TOPOGRAPHIC  
 SURVEYS AT A SCALE OF 1"=100' AND  
 A CONTOUR INTERVAL OF 1'.



**NOTES**

- ELEVATION DATA REPORTED HEREON IS NAVD88 BASED ON A GPS OBSERVATION AND CONNECTIONS TO THE NATIONAL CORS USING THE NGS OPUS UTILITY.
- MINOR CONTOURS ARE 1' INTERVALS.
- MAJOR CONTOURS ARE 5' INTERVALS.
- COORDINATES AND DISTANCES ARE REFERENCED TO NAD83(2011) NEW MEXICO STATE PLANE, EAST ZONE 3001.
- EARTHWORK CALCULATION REQUIRED A FILL AT SOME LOCATION STAKES FOR BALANCE. ALL FILL IS TO BE COMPACTED TO A MINIMUM OF 95% OF THE MAXIMUM DRY DENSITY OBTAINED BY AASHTO METHOD T-99
- CUT/FILL SLOPE 3:1 TYPICAL

REV.	DATE	BY	DESCRIPTION	CHK.
PROJECT: 2019.003-ZHU 2032 BS 5H-8H, 13H-16H S20 T26S R32E				
DRAWN BY: LM		DATE: 6/08/19		ZHU 2032 BS 5H-8H, 13H-16H
CHECKED BY: BG		DATE:		
SCALE: 1"=100'		PAGE: 1 OF 1		

ConocoPhillips Company

PREPARED BY:  
 ROCKIN' CT SURVEYING  
 500 West Kilpatrick  
 Cleburne, TX 76033  
 817.774.2800



**SECTION 20, T. 26 S., R. 32 E.  
 LEA COUNTY, NEW MEXICO**

**TYPICAL RIG LAYOUT**

# **ConocoPhillips MCBU - Permian-Panhandle Gold Data**

**Planning - NM East State Zone - 3001**

**ZIA HILLS 2032 BS 8H**

**ZIA HILLS 2032 BS 8H**

**ZIA HILLS 2032 BS 8H**

**Plan: ZIA HILLS 2032 BS 8H\_WP1**

## **Standard Planning Report**

**03 July, 2019**



# ConocoPhillips

## Planning Report

<b>Database:</b>	EDT 14 Central Planning	<b>Local Co-ordinate Reference:</b>	Site ZIA HILLS 2032 BS 8H
<b>Company:</b>	ConocoPhillips MCBU - Permian-Panhandle Gold Data	<b>TVD Reference:</b>	RKB @ 3171.25ft
<b>Project:</b>	Planning - NM East State Zone - 3001	<b>MD Reference:</b>	RKB @ 3171.25ft
<b>Site:</b>	ZIA HILLS 2032 BS 8H	<b>North Reference:</b>	Grid
<b>Well:</b>	ZIA HILLS 2032 BS 8H	<b>Survey Calculation Method:</b>	Minimum Curvature
<b>Wellbore:</b>	ZIA HILLS 2032 BS 8H		
<b>Design:</b>	ZIA HILLS 2032 BS 8H_WP1		

<b>Project</b>	Planning - NM East State Zone - 3001, Permian Basin - New Mexico - East/South East, Planning Project for Permian wells in NM		
<b>Map System:</b>	US State Plane 1927 (Exact solution)	<b>System Datum:</b>	Mean Sea Level
<b>Geo Datum:</b>	NAD 1927 (NADCON CONUS)		
<b>Map Zone:</b>	New Mexico East 3001		Using geodetic scale factor

<b>Site</b>	ZIA HILLS 2032 BS 8H		
<b>Site Position:</b>		<b>Northing:</b>	374,496.088 usft
<b>From:</b>	Map	<b>Easting:</b>	698,727.590 usft
<b>Position Uncertainty:</b>	0.00 ft	<b>Slot Radius:</b>	13-3/16 "
		<b>Latitude:</b>	32° 1' 40.738 N
		<b>Longitude:</b>	103° 41' 31.476 W
		<b>Grid Convergence:</b>	0.34 °

<b>Well</b>	ZIA HILLS 2032 BS 8H					
<b>Well Position</b>	<b>+N/-S</b>	0.00 ft	<b>Northing:</b>	374,496.088 usft	<b>Latitude:</b>	32° 1' 40.738 N
	<b>+E/-W</b>	0.00 ft	<b>Easting:</b>	698,727.590 usft	<b>Longitude:</b>	103° 41' 31.476 W
<b>Position Uncertainty</b>		2.00 ft	<b>Wellhead Elevation:</b>		<b>Ground Level:</b>	3,145.25 ft

<b>Wellbore</b>	ZIA HILLS 2032 BS 8H				
<b>Magnetics</b>	<b>Model Name</b>	<b>Sample Date</b>	<b>Declination (°)</b>	<b>Dip Angle (°)</b>	<b>Field Strength (nT)</b>
	BGGM2018	2/25/2019	6.90	59.78	47,666.98012292

<b>Design</b>	ZIA HILLS 2032 BS 8H_WP1			
<b>Audit Notes:</b>				
<b>Version:</b>	<b>Phase:</b>	PLAN	<b>Tie On Depth:</b>	0.00
<b>Vertical Section:</b>	<b>Depth From (TVD) (ft)</b>	<b>+N/-S (ft)</b>	<b>+E/-W (ft)</b>	<b>Direction (°)</b>
	0.00	0.00	0.00	6.45

<b>Plan Survey Tool Program</b>	<b>Date</b>	7/3/2019		
<b>Depth From (ft)</b>	<b>Depth To (ft)</b>	<b>Survey (Wellbore)</b>	<b>Tool Name</b>	<b>Remarks</b>
1	0.00	1,200.00	ZIA HILLS 2032 BS 8H_WP1 (ZI NS-GYRO-MS	North sensing gyrocompass
2	1,200.00	17,137.58	ZIA HILLS 2032 BS 8H_WP1 (ZI MWD+IFR1+MS_CoP	Fixed:v2:Eagleford, crustal

# ConocoPhillips

## Planning Report

<b>Database:</b>	EDT 14 Central Planning	<b>Local Co-ordinate Reference:</b>	Site ZIA HILLS 2032 BS 8H
<b>Company:</b>	ConocoPhillips MCBU - Permian-Panhandle Gold Data	<b>TVD Reference:</b>	RKB @ 3171.25ft
<b>Project:</b>	Planning - NM East State Zone - 3001	<b>MD Reference:</b>	RKB @ 3171.25ft
<b>Site:</b>	ZIA HILLS 2032 BS 8H	<b>North Reference:</b>	Grid
<b>Well:</b>	ZIA HILLS 2032 BS 8H	<b>Survey Calculation Method:</b>	Minimum Curvature
<b>Wellbore:</b>	ZIA HILLS 2032 BS 8H		
<b>Design:</b>	ZIA HILLS 2032 BS 8H_WP1		

### Plan Sections

Measured Depth (ft)	Inclination (°)	Azimuth (°)	Vertical Depth (ft)	+N/-S (ft)	+E/-W (ft)	Dogleg Rate (°/100ft)	Build Rate (°/100ft)	Turn Rate (°/100ft)	TFO (°)	Target
0.00	0.00	0.00	0.00	0.00	0.00	0.00	0.00	0.00	0.00	
2,000.00	0.00	0.00	2,000.00	0.00	0.00	0.00	0.00	0.00	0.00	
2,775.28	11.63	82.67	2,769.97	10.01	77.77	1.50	1.50	0.00	82.67	
6,692.69	11.63	82.67	6,606.96	110.80	860.97	0.00	0.00	0.00	0.00	
7,467.97	0.00	0.00	7,376.93	120.80	938.74	1.50	-1.50	0.00	180.00	
8,867.97	0.00	0.00	8,776.93	120.80	938.74	0.00	0.00	0.00	0.00	ZIA HILLS 20 FEDE
8,867.98	0.00	0.00	8,776.94	120.80	938.74	0.00	0.00	0.00	0.00	
9,992.98	90.00	359.73	9,493.14	836.99	935.36	8.00	8.00	0.00	359.73	
17,137.58	90.00	359.73	9,493.14	7,981.51	901.62	0.00	0.00	0.00	0.00	ZIA HILLS 20 FEDE

### Planned Survey

Measured Depth (ft)	Inclination (°)	Azimuth (°)	Vertical Depth (ft)	+N/-S (ft)	+E/-W (ft)	Vertical Section (ft)	Dogleg Rate (°/100ft)	Build Rate (°/100ft)	Turn Rate (°/100ft)
0.00	0.00	0.00	0.00	0.00	0.00	0.00	0.00	0.00	0.00
2,000.00	0.00	0.00	2,000.00	0.00	0.00	0.00	0.00	0.00	0.00
2,775.28	11.63	82.67	2,769.97	10.01	77.77	18.67	1.50	1.50	0.00
6,692.69	11.63	82.67	6,606.96	110.80	860.97	206.74	0.00	0.00	0.00
7,467.97	0.00	0.00	7,376.93	120.80	938.74	225.41	1.50	-1.50	0.00
8,867.97	0.00	0.00	8,776.93	120.80	938.74	225.41	0.00	0.00	0.00
8,867.98	0.00	0.00	8,776.94	120.80	938.74	225.41	0.00	0.00	0.00
9,992.98	90.00	359.73	9,493.14	836.99	935.36	936.70	8.00	8.00	0.00
17,137.58	90.00	359.73	9,493.14	7,981.51	901.62	8,032.27	0.00	0.00	0.00

### Design Targets

Target Name	Dip Angle (°)	Dip Dir. (°)	TVD (ft)	+N/-S (ft)	+E/-W (ft)	Northing (usft)	Easting (usft)	Latitude	Longitude
ZIA HILLS 20 FEDER - hit/miss target - Shape - Point	0.00	0.00	8,776.93	120.80	938.74	374,616.887	699,666.285	32° 1' 41.878 N	103° 41' 20.564 W
ZIA HILLS 20 FEDER - plan misses target center by 0.01ft at 17137.58ft MD (9493.14 TVD, 7981.51 N, 901.62 E) - Point	0.00	0.00	9,493.13	7,981.51	901.62	382,477.216	699,629.171	32° 2' 59.666 N	103° 41' 20.450 W
ZIA HILLS 20 FEDER - plan misses target center by 0.01ft at 17137.58ft MD (9493.14 TVD, 7981.51 N, 901.62 E) - Point	0.00	0.00	9,493.13	7,981.51	901.62	382,477.216	699,629.171	32° 2' 59.666 N	103° 41' 20.450 W

### Casing Points

Measured Depth (ft)	Vertical Depth (ft)	Name	Casing Diameter (")	Hole Diameter (")
1,200.00	1,200.00	13 3/8"	13-3/8	17-1/2
10,087.00	9,493.14	9 5/8"	9-5/8	12-1/4
17,214.00		5 1/2"	5-1/2	8-1/2

# ConocoPhillips

## Planning Report

<b>Database:</b>	EDT 14 Central Planning	<b>Local Co-ordinate Reference:</b>	Site ZIA HILLS 2032 BS 8H
<b>Company:</b>	ConocoPhillips MCBU - Permian-Panhandle Gold Data	<b>TVD Reference:</b>	RKB @ 3171.25ft
<b>Project:</b>	Planning - NM East State Zone - 3001	<b>MD Reference:</b>	RKB @ 3171.25ft
<b>Site:</b>	ZIA HILLS 2032 BS 8H	<b>North Reference:</b>	Grid
<b>Well:</b>	ZIA HILLS 2032 BS 8H	<b>Survey Calculation Method:</b>	Minimum Curvature
<b>Wellbore:</b>	ZIA HILLS 2032 BS 8H		
<b>Design:</b>	ZIA HILLS 2032 BS 8H_WP1		



5-1/8" API 15K BX-169

1-13/16" 15K BX-151

30.00  
[762.0mm]

GROUND LEVEL

GROUND

11" API 10K BX-158

12.00  
[304.8mm]

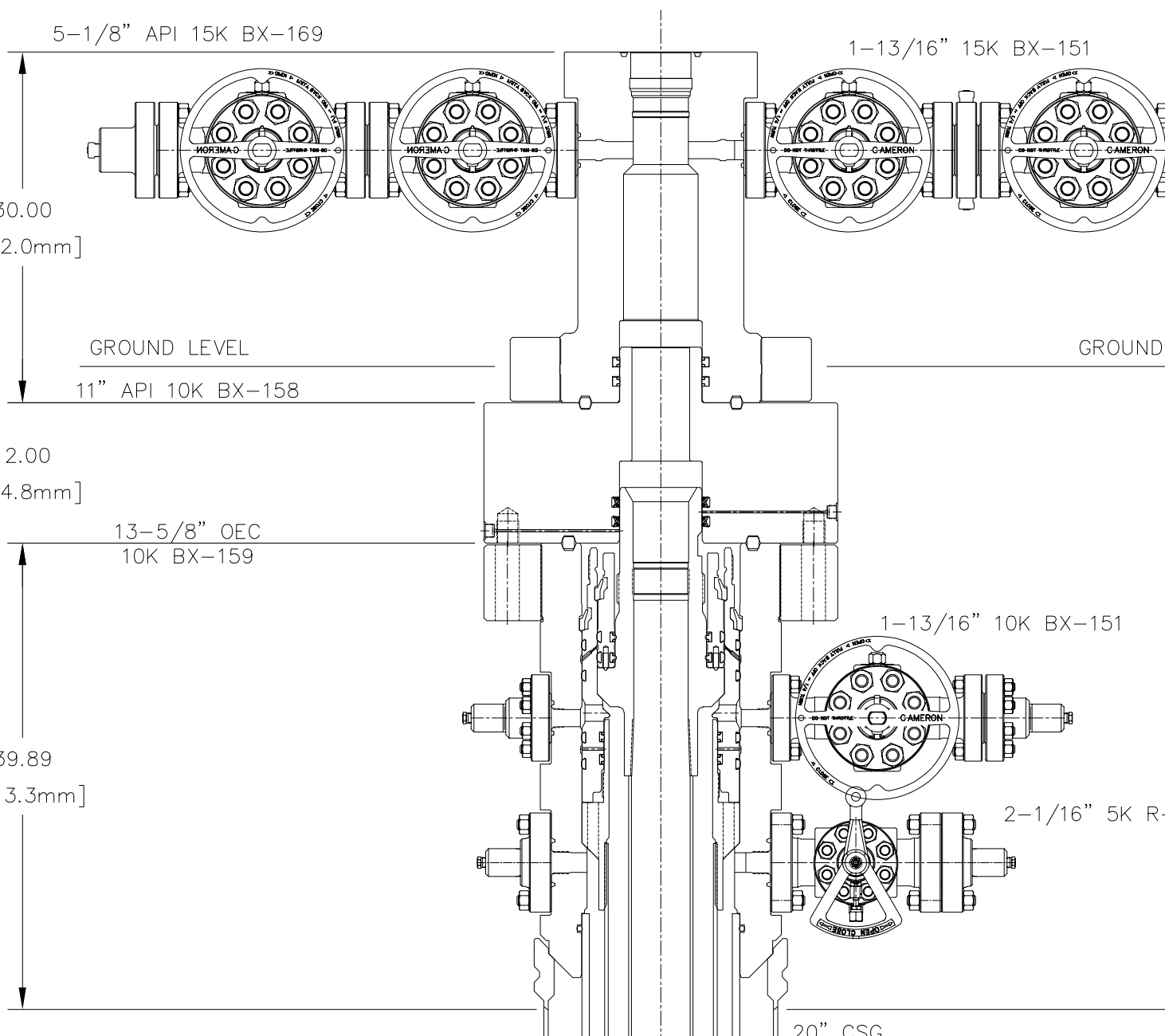
13-5/8" OEC  
10K BX-159

39.89  
[1013.3mm]

1-13/16" 10K BX-151

2-1/16" 5K R

20" CSG





**APD ID:** 10400043596

**Submission Date:** 08/07/2019

**Operator Name:** CONOCOPHILLIPS COMPANY

**Well Name:** ZHU 2032 BS

**Well Number:** 8H

**Well Type:** OIL WELL

**Well Work Type:** Drill

**Section 1 - General**

**Would you like to address long-term produced water disposal?** NO

**Section 2 - Lined Pits**

**Would you like to utilize Lined Pit PWD options?** NO

**Produced Water Disposal (PWD) Location:**

**PWD surface owner:**

**PWD disturbance (acres):**

**Lined pit PWD on or off channel:**

**Lined pit PWD discharge volume (bbl/day):**

**Lined pit specifications:**

**Pit liner description:**

**Pit liner manufacturers information:**

**Precipitated solids disposal:**

**Describe precipitated solids disposal:**

**Precipitated solids disposal permit:**

**Lined pit precipitated solids disposal schedule:**

**Lined pit precipitated solids disposal schedule attachment:**

**Lined pit reclamation description:**

**Lined pit reclamation attachment:**

**Leak detection system description:**

**Leak detection system attachment:**

**Operator Name:** CONOCOPHILLIPS COMPANY

**Well Name:** ZHU 2032 BS

**Well Number:** 8H

**Lined pit Monitor description:**

**Lined pit Monitor attachment:**

**Lined pit: do you have a reclamation bond for the pit?**

**Is the reclamation bond a rider under the BLM bond?**

**Lined pit bond number:**

**Lined pit bond amount:**

**Additional bond information attachment:**

### **Section 3 - Unlined Pits**

**Would you like to utilize Unlined Pit PWD options? NO**

**Produced Water Disposal (PWD) Location:**

**PWD disturbance (acres):**

**PWD surface owner:**

**Unlined pit PWD on or off channel:**

**Unlined pit PWD discharge volume (bbl/day):**

**Unlined pit specifications:**

**Precipitated solids disposal:**

**Describe precipitated solids disposal:**

**Precipitated solids disposal permit:**

**Unlined pit precipitated solids disposal schedule:**

**Unlined pit precipitated solids disposal schedule attachment:**

**Unlined pit reclamation description:**

**Unlined pit reclamation attachment:**

**Unlined pit Monitor description:**

**Unlined pit Monitor attachment:**

**Do you propose to put the produced water to beneficial use?**

**Beneficial use user confirmation:**

**Estimated depth of the shallowest aquifer (feet):**

**Does the produced water have an annual average Total Dissolved Solids (TDS) concentration equal to or less than that of the existing water to be protected?**

**TDS lab results:**

**Geologic and hydrologic evidence:**

**State authorization:**

**Unlined Produced Water Pit Estimated percolation:**

**Unlined pit: do you have a reclamation bond for the pit?**

**Operator Name:** CONOCOPHILLIPS COMPANY

**Well Name:** ZHU 2032 BS

**Well Number:** 8H

**Is the reclamation bond a rider under the BLM bond?**

**Unlined pit bond number:**

**Unlined pit bond amount:**

**Additional bond information attachment:**

### Section 4 - Injection

**Would you like to utilize Injection PWD options?** NO

**Produced Water Disposal (PWD) Location:**

**PWD surface owner:**

**PWD disturbance (acres):**

**Injection PWD discharge volume (bbl/day):**

**Injection well mineral owner:**

**Injection well type:**

**Injection well number:**

**Injection well name:**

**Assigned injection well API number?**

**Injection well API number:**

**Injection well new surface disturbance (acres):**

**Minerals protection information:**

**Mineral protection attachment:**

**Underground Injection Control (UIC) Permit?**

**UIC Permit attachment:**

### Section 5 - Surface Discharge

**Would you like to utilize Surface Discharge PWD options?** NO

**Produced Water Disposal (PWD) Location:**

**PWD surface owner:**

**PWD disturbance (acres):**

**Surface discharge PWD discharge volume (bbl/day):**

**Surface Discharge NPDES Permit?**

**Surface Discharge NPDES Permit attachment:**

**Surface Discharge site facilities information:**

**Surface discharge site facilities map:**

### Section 6 - Other

**Would you like to utilize Other PWD options?** NO

**Produced Water Disposal (PWD) Location:**

**PWD surface owner:**

**PWD disturbance (acres):**



**Operator Name:** CONOCOPHILLIPS COMPANY

**Well Name:** ZHU 2032 BS

**Well Number:** 8H

**Other PWD type description:**

**Other PWD type attachment:**

**Have other regulatory requirements been met?**

**Other regulatory requirements attachment:**



**APD ID:** 10400043596

**Submission Date:** 08/07/2019

**Operator Name:** CONOCOPHILLIPS COMPANY

Highlighted data  
reflects the most  
recent changes

**Well Name:** ZHU 2032 BS

**Well Number:** 8H

[Show Final Text](#)

**Well Type:** OIL WELL

**Well Work Type:** Drill

## Bond Information

**Federal/Indian APD:** FED

**BLM Bond number:** ES0085

**BIA Bond number:**

**Do you have a reclamation bond?** NO

**Is the reclamation bond a rider under the BLM bond?**

**Is the reclamation bond BLM or Forest Service?**

**BLM reclamation bond number:**

**Forest Service reclamation bond number:**

**Forest Service reclamation bond attachment:**

**Reclamation bond number:**

**Reclamation bond amount:**

**Reclamation bond rider amount:**

**Additional reclamation bond information attachment:**

District I  
1625 N. French Dr., Hobbs, NM 88240  
Phone: (575) 393-6161 Fax: (575) 393-0720  
District II  
811 S. First St., Artesia, NM 88210  
Phone: (575) 748-1283 Fax: (575) 748-9720  
District III  
1000 Rio Brazos Road, Aztec, NM 87410  
Phone: (505) 334-6178 Fax: (505) 334-6170  
District IV  
1220 S. St. Francis Dr., Santa Fe, NM 87505  
Phone: (505) 476-3460 Fax: (505) 476-3462

State of New Mexico  
Energy, Minerals & Natural Resources Department  
OIL CONSERVATION DIVISION  
1220 South St. Francis Dr.  
Santa Fe, NM 87505

OCB - HOBBS  
06/09/2020  
RECEIVED

Form C-102  
Revised August 1, 2011  
Submit one copy to appropriate  
District Office  
 AMENDED REPORT

WELL LOCATION AND ACREAGE DEDICATION PLAT

<sup>1</sup> API Number <b>30-025-47305</b>	<sup>2</sup> Pool Code <b>98009</b>	<sup>3</sup> Pool Name <b>Zia Hills; Bone Spring</b>
<sup>4</sup> Property Code <b>328111</b>	<sup>5</sup> Property Name <b>ZHU 2032 BS</b>	
<sup>7</sup> OGRID No. <b>217817</b>	<sup>8</sup> Operator Name <b>ConocoPhillips Company</b>	<sup>9</sup> Elevation <b>3,143.2' (NAVD88)</b>

<sup>10</sup> Surface Location

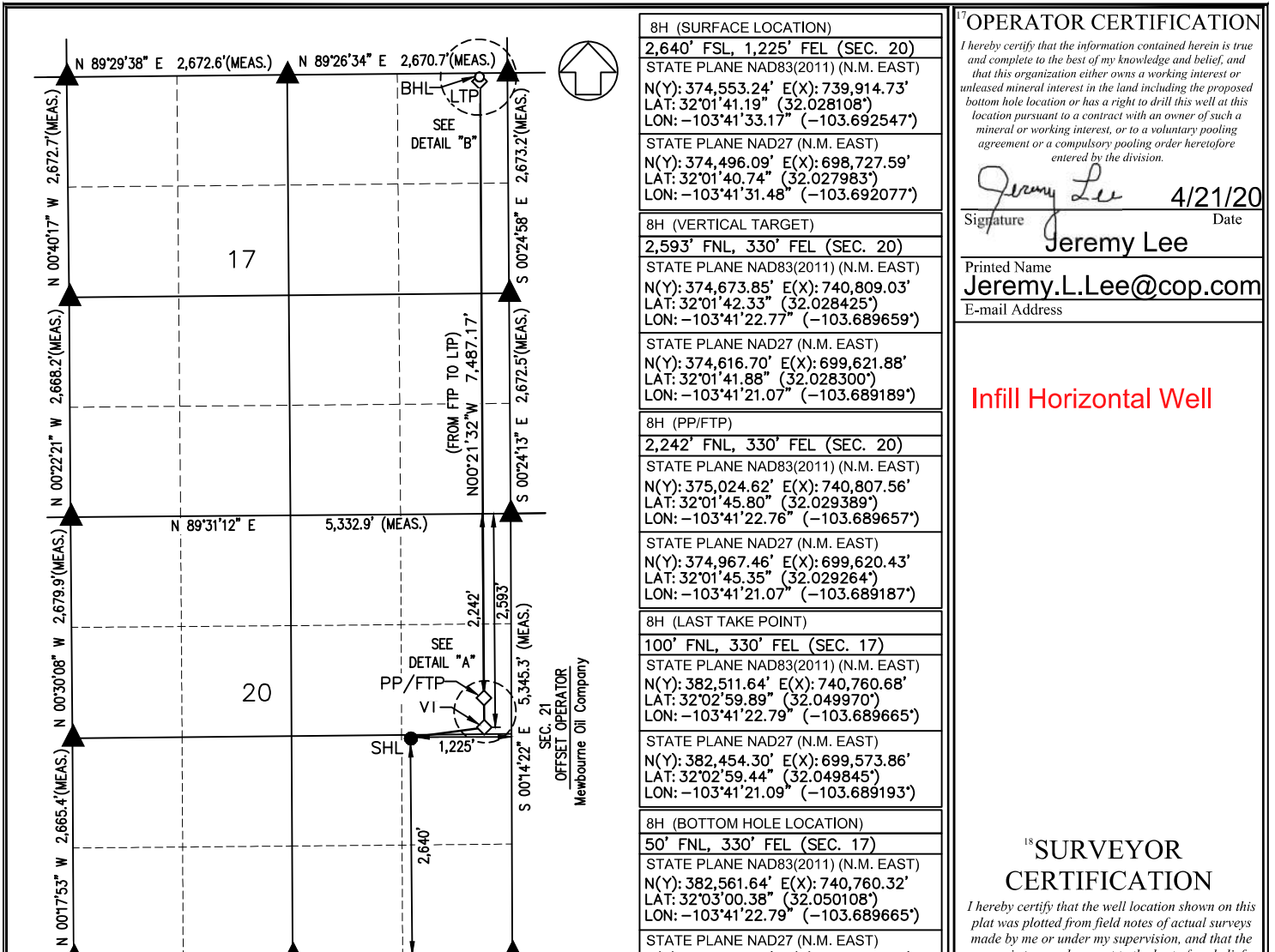
UL or lot no.	Section	Township	Range	Lot Idn	Feet from the	North/South line	Feet from the	East/West line	County
<b>I</b>	<b>20</b>	<b>26 S</b>	<b>32 E</b>		<b>2,640'</b>	<b>SOUTH</b>	<b>1,225'</b>	<b>EAST</b>	<b>LEA COUNTY</b>

<sup>11</sup> Bottom Hole Location If Different From Surface

UL or lot no.	Section	Township	Range	Lot Idn	Feet from the	North/South line	Feet from the	East/West line	County
<b>A</b>	<b>17</b>	<b>26 S</b>	<b>32 E</b>		<b>50'</b>	<b>NORTH</b>	<b>330'</b>	<b>EAST</b>	<b>LEA COUNTY</b>

<sup>12</sup> Dedicated Acres <b>240</b>	<sup>13</sup> Joint or Infill <b>X</b>	<sup>14</sup> Consolidation Code	<sup>15</sup> Order No.
---	---	----------------------------------	-------------------------

No allowable will be assigned to this completion until all interests have been consolidated or a non-standard unit has been approved by the division.



District I  
1625 N. French Dr., Hobbs, NM 88240  
District II  
811 S. First St., Artesia, NM 88210  
District III  
1000 Rio Brazos Road, Aztec, NM 87410  
District IV  
1220 S. St. Francis Dr., Santa Fe, NM 87505

State of New Mexico  
Energy, Minerals and Natural Resources Department  
Oil Conservation Division  
1220 South St. Francis Dr.  
Santa Fe, NM 87505

Submit Original  
to Appropriate  
District Office

OCD – HOBBS  
06/09/2020  
RECEIVED

## GAS CAPTURE PLAN

Original

Operator & OGRID No.: ConocoPhillips Company/ 217817

Amended

Date: 6/19/19

Reason for Amendment: \_\_\_\_\_

This Gas Capture Plan outlines actions to be taken by the Operator to reduce well/production facility flaring/venting for new completion (new drill, recomple to new zone, re-frac) activity.

*Note: A C-129 must be submitted and approved prior to exceeding 60 days allowed by Rule 19.15.18.12.A*

### Well(s)/Production Facility – Name of facility

The well(s) that will be located at the production facility are shown in the table below.

Well Name	API	Well Location (ULSTR)	Footages	Expected MCF/D	Flared or Vented	Comments
ZHU 2032 BS 5H, 6H, 7H, 8H	Pending	Sec. 20, T26S, 32E	Various		Flared	Flaring is expected to be sporadic
<b>#008H</b>	<b>30-025-47305</b>					

### Gathering System and Pipeline Notification

Well(s) will be connected to a production facility after flowback operations are complete, if gas transporter system is in place. The gas produced from production facility is dedicated to Enterprise and will be connected to Enterprise low/high pressure gathering system located in Lea County, New Mexico. It will require 568' of pipeline to connect the facility to low/high pressure gathering system. Conocophillips provides (periodically) to Enterprise a drilling, completion and estimated first production date for wells that are scheduled to be drilled in the foreseeable future. In addition, Enterprise and Conocophillips have periodic conference calls to discuss changes to drilling and completion schedules. Gas from these wells will be processed at Enterprise Processing Plant located in Oral, Texas Reeves County, Texas. The actual flow of the gas will be based on compression operating parameters and gathering system pressures.

### Flowback Strategy

After the fracture treatment/completion operations, well(s) will be produced to temporary production tanks and gas will be flared or vented. During flowback, the fluids and sand content will be monitored. When the produced fluids contain minimal sand, the wells will be turned to production facilities. Gas sales should start as soon as the wells start flowing through the production facilities, unless there are operational issues on Gas Transporter system at that time. Based on current information, it is Operator's belief the system can take this gas upon completion of the well(s).

Safety requirements during cleanout operations from the use of underbalanced air cleanout systems may necessitate that sand and non-pipeline quality gas be vented and/or flared rather than sold on a temporary basis.

### Alternatives to Reduce Flaring

Below are alternatives considered from a conceptual standpoint to reduce the amount of gas flared.

- Power Generation – On lease
  - Only a portion of gas is consumed operating the generator, remainder of gas will be flared
- Compressed Natural Gas – On lease
  - Gas flared would be minimal, but might be uneconomical to operate when gas volume declines
- NGL Removal – On lease
  - Plants are expensive, residue gas is still flared, and uneconomical to operate when gas volume declines