

UNITED STATES
DEPARTMENT OF THE INTERIOR
BUREAU OF LAND MANAGEMENT

APPLICATION FOR PERMIT TO DRILL OR REENTER

OCD - HOBBS
06/30/2020
RECEIVED

FORM APPROVED
OMB No. 1004-0137
Expires: January 31, 2018

1a. Type of work: <input type="checkbox"/> DRILL <input type="checkbox"/> REENTER		5. Lease Serial No.
1b. Type of Well: <input type="checkbox"/> Oil Well <input type="checkbox"/> Gas Well <input type="checkbox"/> Other		6. If Indian, Allottee or Tribe Name
1c. Type of Completion: <input type="checkbox"/> Hydraulic Fracturing <input type="checkbox"/> Single Zone <input type="checkbox"/> Multiple Zone		7. If Unit or CA Agreement, Name and No.
		8. Lease Name and Well No. [328512]
2. Name of Operator [372165]		9. API Well No. 30-025-47404
3a. Address	3b. Phone No. (include area code)	10. Field and Pool, or Exploratory [2209]
4. Location of Well (Report location clearly and in accordance with any State requirements. *) At surface At proposed prod. zone		11. Sec., T. R. M. or Blk. and Survey or Area
14. Distance in miles and direction from nearest town or post office*		12. County or Parish
		13. State
15. Distance from proposed* location to nearest property or lease line, ft. (Also to nearest drig. unit line, if any)	16. No of acres in lease	17. Spacing Unit dedicated to this well
18. Distance from proposed location* to nearest well, drilling, completed, applied for, on this lease, ft.	19. Proposed Depth	20. BLM/BIA Bond No. in file
21. Elevations (Show whether DF, KDB, RT, GL, etc.)	22. Approximate date work will start*	23. Estimated duration
24. Attachments		

The following, completed in accordance with the requirements of Onshore Oil and Gas Order No. 1, and the Hydraulic Fracturing rule per 43 CFR 3162.3-3 (as applicable)

- | | |
|--|---|
| 1. Well plat certified by a registered surveyor. | 4. Bond to cover the operations unless covered by an existing bond on file (see Item 20 above). |
| 2. A Drilling Plan. | 5. Operator certification. |
| 3. A Surface Use Plan (if the location is on National Forest System Lands, the SUPO must be filed with the appropriate Forest Service Office). | 6. Such other site specific information and/or plans as may be requested by the BLM. |

25. Signature	Name (Printed/Typed)	Date
Title		
Approved by (Signature)	Name (Printed/Typed)	Date
Title		
Office		

Application approval does not warrant or certify that the applicant holds legal or equitable title to those rights in the subject lease which would entitle the applicant to conduct operations thereon.
Conditions of approval, if any, are attached.

Title 18 U.S.C. Section 1001 and Title 43 U.S.C. Section 1212, make it a crime for any person knowingly and willfully to make to any department or agency of the United States any false, fictitious or fraudulent statements or representations as to any matter within its jurisdiction.

GCP Rec 06/30/2020

SL

(Continued on page 2)

APPROVED WITH CONDITIONS
Approval Date: 06/30/2020

KZ
07/08/2020

*(Instructions on page 2)

PECOS DISTRICT

DRILLING CONDITIONS OF APPROVAL

OPERATOR'S NAME:	CENTENNIAL RESOURCE PRODUCTION LLC
WELL NAME & NO.:	MASTIFF 22 FEDERAL COM 501H
SURFACE HOLE FOOTAGE:	300'/S & 1089'/E
BOTTOM HOLE FOOTAGE:	100'/N & 330'/E
LOCATION:	Section 22, T.23 S., R.34 E., NMPM
COUNTY:	Lea County, New Mexico

COA

H2S	<input checked="" type="radio"/> Yes	<input type="radio"/> No	
Potash	<input checked="" type="radio"/> None	<input type="radio"/> Secretary	<input type="radio"/> R-111-P
Cave/Karst Potential	<input checked="" type="radio"/> Low	<input type="radio"/> Medium	<input type="radio"/> High
Cave/Karst Potential	<input type="radio"/> Critical		
Variance	<input type="radio"/> None	<input checked="" type="radio"/> Flex Hose	<input type="radio"/> Other
Wellhead	<input type="radio"/> Conventional	<input checked="" type="radio"/> Multibowl	<input type="radio"/> Both
Other	<input type="checkbox"/> 4 String Area	<input type="checkbox"/> Capitan Reef	<input type="checkbox"/> WIPP
Other	<input type="checkbox"/> Fluid Filled	<input type="checkbox"/> Cement Squeeze	<input type="checkbox"/> Pilot Hole
Special Requirements	<input type="checkbox"/> Water Disposal	<input checked="" type="checkbox"/> COM	<input type="checkbox"/> Unit

A. HYDROGEN SULFIDE

A Hydrogen Sulfide (H2S) Drilling Plan shall be activated 500 feet prior to drilling into the **Wolfcamp** formation. As a result, the Hydrogen Sulfide area must meet Onshore Order 6 requirements, which includes equipment and personnel/public protection items. If Hydrogen Sulfide is encountered, please provide measured values and formations to the BLM.

B. CASING

1. The **13-3/8** inch surface casing shall be set at approximately **1600** feet (a minimum of **25 feet (Lea County)** into the Rustler Anhydrite and above the salt) and cemented to the surface.
 - a. If cement does not circulate to the surface, the appropriate BLM office shall be notified and a temperature survey utilizing an electronic type temperature survey with surface log readout will be used or a cement bond log shall be run to verify the top of the cement. Temperature survey will be run a minimum of six hours after pumping cement and ideally between 8-10 hours after completing the cement job.
 - b. Wait on cement (WOC) time for a primary cement job will be a minimum of **8 hours** or 500 pounds compressive strength, whichever is greater. (This is to

- include the lead cement)
- c. Wait on cement (WOC) time for a remedial job will be a minimum of 4 hours after bringing cement to surface or 500 pounds compressive strength, whichever is greater.
 - d. If cement falls back, remedial cementing will be done prior to drilling out that string.
2. The minimum required fill of cement behind the **9-5/8** inch intermediate casing is:
- Cement to surface. If cement does not circulate see B.1.a, c-d above.
Wait on cement (WOC) time for a primary cement job is to include the lead cement slurry due to cave/karst or potash.
3. The minimum required fill of cement behind the **5-1/2** inch production casing is:
- Cement should tie-back at least **200 feet** into previous casing string. Operator shall provide method of verification.

C. PRESSURE CONTROL

1. Variance approved to use flex line from BOP to choke manifold. Manufacturer's specification to be readily available. No external damage to flex line. Flex line to be installed as straight as possible (no hard bends).'
2. Operator has proposed a multi-bowl wellhead assembly. This assembly will only be tested when installed on the surface casing. Minimum working pressure of the blowout preventer (BOP) and related equipment (BOPE) required for drilling below the surface casing shoe shall be **5000 (5M)** psi.
 - a. Wellhead shall be installed by manufacturer's representatives, submit documentation with subsequent sundry.
 - b. If the welding is performed by a third party, the manufacturer's representative shall monitor the temperature to verify that it does not exceed the maximum temperature of the seal.
 - c. Manufacturer representative shall install the test plug for the initial BOP test.
 - d. If the cement does not circulate and one inch operations would have been possible with a standard wellhead, the well head shall be cut off, cementing operations performed and another wellhead installed.
 - e. Whenever any seal subject to test pressure is broken, all the tests in OOGO2.III.A.2.i must be followed.

D. SPECIAL REQUIREMENT (S)

Communitization Agreement

- The operator will submit a Communitization Agreement to the Santa Fe Office, 301 Dinosaur Trail Santa Fe, New Mexico 87508, at least 90 days before the anticipated date of first production from a well subject to a spacing order issued by the New Mexico Oil Conservation Division. The Communitization Agreement will include the signatures of all working interest owners in all Federal and Indian leases subject to the Communitization Agreement (i.e., operating rights owners and lessees of record), or certification that the operator has obtained the written signatures of all such owners and will make those signatures available to the BLM immediately upon request.
- If the operator does not comply with this condition of approval, the BLM may take enforcement actions that include, but are not limited to, those specified in 43 CFR 3163.1.
- In addition, the well sign shall include the surface and bottom hole lease numbers. When the Communitization Agreement number is known, it shall also be on the sign.

GENERAL REQUIREMENTS

The BLM is to be notified in advance for a representative to witness:

- a. Spudding well (minimum of 24 hours)
- b. Setting and/or Cementing of all casing strings (minimum of 4 hours)
- c. BOPE tests (minimum of 4 hours)

☒ Eddy County

Call the Carlsbad Field Office, 620 East Greene St., Carlsbad, NM 88220,
(575) 361-2822

☒ Lea County

Call the Hobbs Field Station, 414 West Taylor, Hobbs NM 88240, (575)
393-3612

1. Unless the production casing has been run and cemented or the well has been properly plugged, the drilling rig shall not be removed from over the hole without prior approval.
 - a. In the event the operator has proposed to drill multiple wells utilizing a skid/walking rig. Operator shall secure the wellbore on the current well, after installing and testing the wellhead, by installing a blind flange of like pressure rating to the wellhead and a pressure gauge that can be monitored while drilling is performed on the other well(s).
 - b. When the operator proposes to set surface casing with Spudder Rig
 - Notify the BLM when moving in and removing the Spudder Rig.

- Notify the BLM when moving in the 2nd Rig. Rig to be moved in within 90 days of notification that Spudder Rig has left the location.
 - BOP/BOPE test to be conducted per Onshore Oil and Gas Order No. 2 as soon as 2nd Rig is rigged up on well.
2. Floor controls are required for 3M or Greater systems. These controls will be on the rig floor, unobstructed, readily accessible to the driller and will be operational at all times during drilling and/or completion activities. Rig floor is defined as the area immediately around the rotary table; the area immediately above the substructure on which the draw works are located, this does not include the dog house or stairway area.
 3. The record of the drilling rate along with the GR/N well log run from TD to surface (horizontal well – vertical portion of hole) shall be submitted to the BLM office as well as all other logs run on the borehole 30 days from completion. If available, a digital copy of the logs is to be submitted in addition to the paper copies. The Rustler top and top and bottom of Salt are to be recorded on the Completion Report.

A. CASING

1. Changes to the approved APD casing program need prior approval if the items substituted are of lesser grade or different casing size or are Non-API. The Operator can exchange the components of the proposal with that of superior strength (i.e. changing from J-55 to N-80, or from 36# to 40#). Changes to the approved cement program need prior approval if the altered cement plan has less volume or strength or if the changes are substantial (i.e. Multistage tool, ECP, etc.). The initial wellhead installed on the well will remain on the well with spools used as needed.
2. Wait on cement (WOC) for Potash Areas: After cementing but before commencing any tests, the casing string shall stand cemented under pressure until both of the following conditions have been met: 1) cement reaches a minimum compressive strength of 500 psi for all cement blends, 2) until cement has been in place at least 24 hours. WOC time will be recorded in the driller's log. The casing integrity test can be done (prior to the cement setting up) immediately after bumping the plug.
3. Wait on cement (WOC) for Water Basin: After cementing but before commencing any tests, the casing string shall stand cemented under pressure until both of the following conditions have been met: 1) cement reaches a minimum compressive strength of 500 psi at the shoe, 2) until cement has been in place at least 8 hours. WOC time will be recorded in the driller's log. See individual casing strings for details regarding lead cement slurry requirements. The casing integrity test can be done (prior to the cement setting up) immediately after bumping the plug.
4. Provide compressive strengths including hours to reach required 500 pounds compressive strength prior to cementing each casing string. Have well specific cement details onsite prior to pumping the cement for each casing string.

5. No pea gravel permitted for remedial or fall back remedial without prior authorization from the BLM engineer.
6. On that portion of any well approved for a 5M BOPE system or greater, a pressure integrity test of each casing shoe shall be performed. Formation at the shoe shall be tested to a minimum of the mud weight equivalent anticipated to control the formation pressure to the next casing depth or at total depth of the well. This test shall be performed before drilling more than 20 feet of new hole.
7. If hardband drill pipe is rotated inside casing, returns will be monitored for metal. If metal is found in samples, drill pipe will be pulled and rubber protectors which have a larger diameter than the tool joints of the drill pipe will be installed prior to continuing drilling operations.
8. Whenever a casing string is cemented in the R-111-P potash area, the NMOCD requirements shall be followed.

B. PRESSURE CONTROL

1. All blowout preventer (BOP) and related equipment (BOPE) shall comply with well control requirements as described in Onshore Oil and Gas Order No. 2 and API RP 53 Sec. 17.
2. If a variance is approved for a flexible hose to be installed from the BOP to the choke manifold, the following requirements apply: The flex line must meet the requirements of API 16C. Check condition of flexible line from BOP to choke manifold, replace if exterior is damaged or if line fails test. Line to be as straight as possible with no hard bends and is to be anchored according to Manufacturer's requirements. The flexible hose can be exchanged with a hose of equal size and equal or greater pressure rating. Anchor requirements, specification sheet and hydrostatic pressure test certification matching the hose in service, to be onsite for review. These documents shall be posted in the company man's trailer and on the rig floor.
3. 5M or higher system requires an HCR valve, remote kill line and annular to match. The remote kill line is to be installed prior to testing the system and tested to stack pressure.
4. If the operator has proposed a multi-bowl wellhead assembly in the APD. The following requirements must be met:
 - a. Wellhead shall be installed by manufacturer's representatives, submit documentation with subsequent sundry.
 - b. If the welding is performed by a third party, the manufacturer's representative shall monitor the temperature to verify that it does not exceed the maximum temperature of the seal.

- c. Manufacturer representative shall install the test plug for the initial BOP test.
 - d. Whenever any seal subject to test pressure is broken, all the tests in OOGO2.III.A.2.i must be followed.
 - e. If the cement does not circulate and one inch operations would have been possible with a standard wellhead, the well head shall be cut off, cementing operations performed and another wellhead installed.
5. The appropriate BLM office shall be notified a minimum of 4 hours in advance for a representative to witness the tests.
- a. In a water basin, for all casing strings utilizing slips, these are to be set as soon as the crew and rig are ready and any fallback cement remediation has been done. The casing cut-off and BOP installation can be initiated four hours after installing the slips, which will be approximately six hours after bumping the plug. For those casing strings not using slips, the minimum wait time before cut-off is eight hours after bumping the plug. BOP/BOPE testing can begin after cut-off or once cement reaches 500 psi compressive strength (including lead when specified), whichever is greater. However, if the float does not hold, cut-off cannot be initiated until cement reaches 500 psi compressive strength (including lead when specified).
 - b. In potash areas, for all casing strings utilizing slips, these are to be set as soon as the crew and rig are ready and any fallback cement remediation has been done. For all casing strings, casing cut-off and BOP installation can be initiated at twelve hours after bumping the plug. However, **no tests** shall commence until the cement has had a minimum of 24 hours setup time, except the casing pressure test can be initiated immediately after bumping the plug (only applies to single stage cement jobs).
 - c. The tests shall be done by an independent service company utilizing a test plug not a cup or J-packer. The operator also has the option of utilizing an independent tester to test without a plug (i.e. against the casing) pursuant to Onshore Order 2 with the pressure not to exceed 70% of the burst rating for the casing. Any test against the casing must meet the WOC time for water basin (8 hours) or potash (24 hours) or 500 pounds compressive strength, whichever is greater, prior to initiating the test (see casing segment as lead cement may be critical item).
 - d. The test shall be run on a 5000 psi chart for a 2-3M BOP/BOP, on a 10000 psi chart for a 5M BOP/BOPE and on a 15000 psi chart for a 10M BOP/BOPE. If a linear chart is used, it shall be a one hour chart. A circular chart shall have a maximum 2 hour clock. If a twelve hour or twenty-four hour chart is used, tester shall make a notation that it is run with a two hour clock.
 - e. The results of the test shall be reported to the appropriate BLM office.

- f. All tests are required to be recorded on a calibrated test chart. A copy of the BOP/BOPE test chart and a copy of independent service company test will be submitted to the appropriate BLM office.
- g. The BOP/BOPE test shall include a low pressure test from 250 to 300 psi. The test will be held for a minimum of 10 minutes if test is done with a test plug and 30 minutes without a test plug. This test shall be performed prior to the test at full stack pressure.
- h. BOP/BOPE must be tested by an independent service company within 500 feet of the top of the Wolfcamp formation if the time between the setting of the intermediate casing and reaching this depth exceeds 20 days. This test does not exclude the test prior to drilling out the casing shoe as per Onshore Order No. 2.

C. DRILLING MUD

Mud system monitoring equipment, with derrick floor indicators and visual and audio alarms, shall be operating before drilling into the Wolfcamp formation, and shall be used until production casing is run and cemented.

D. WASTE MATERIAL AND FLUIDS

All waste (i.e. drilling fluids, trash, salts, chemicals, sewage, gray water, etc.) created as a result of drilling operations and completion operations shall be safely contained and disposed of properly at a waste disposal facility. No waste material or fluid shall be disposed of on the well location or surrounding area.

Porto-johns and trash containers will be on-location during fracturing operations or any other crew-intensive operations.

JJP006232020



APD ID: 10400038195

Submission Date: 01/17/2019

Highlighted data
reflects the most
recent changes

Operator Name: CENTENNIAL RESOURCE PRODUCTION LLC

Well Name: MASTIFF 22 FEDERAL COM

Well Number: 501H

[Show Final Text](#)

Well Type: OIL WELL

Well Work Type: Drill

Section 1 - General

APD ID: 10400038195

Tie to previous NOS?

Submission Date: 01/17/2019

BLM Office: CARLSBAD

User: Kanicia Schlichting

Title: Sr. Regulatory Analyst

Federal/Indian APD: FED

Is the first lease penetrated for production Federal or Indian? FED

Lease number: NMNM132073

Lease Acres: 320

Surface access agreement in place?

Allotted?

Reservation:

Agreement in place? NO

Federal or Indian agreement:

Agreement number:

Agreement name:

Keep application confidential? YES

Permitting Agent? NO

APD Operator: CENTENNIAL RESOURCE PRODUCTION LLC

Operator letter of designation:

Operator Info

Operator Organization Name: CENTENNIAL RESOURCE PRODUCTION LLC

Operator Address: 1001 17th Street, Suite 1800

Zip: 80202

Operator PO Box:

Operator City: Denver

State: CO

Operator Phone: (720)499-1400

Operator Internet Address:

Section 2 - Well Information

Well in Master Development Plan? EXISTING

Master Development Plan name: Dandie/Mastiff 22 Federal Com

Well in Master SUPO? NO

Master SUPO name:

Well in Master Drilling Plan? NO

Master Drilling Plan name:

Well Name: MASTIFF 22 FEDERAL COM

Well Number: 501H

Well API Number:

Field/Pool or Exploratory? Field and Pool

Field Name: 2N BONESPRING
SANDD

Pool Name: ANTELOPE
RIDGE; BONE SPRING, WEST

Is the proposed well in an area containing other mineral resources? NONE

Operator Name: CENTENNIAL RESOURCE PRODUCTION LLC

Well Name: MASTIFF 22 FEDERAL COM

Well Number: 501H

Is the proposed well in an area containing other mineral resources? NONE

Is the proposed well in a Helium production area? N

Use Existing Well Pad? YES

New surface disturbance? N

Type of Well Pad: MULTIPLE WELL

Multiple Well Pad Name:

Number: 6

Well Class: HORIZONTAL

DANDIE/MASTIFF 22 FEDERAL
COM

Number of Legs: 1

Well Work Type: Drill

Well Type: OIL WELL

Describe Well Type:

Well sub-Type: INFILL

Describe sub-type:

Distance to town: 29 Miles

Distance to nearest well: 30 FT

Distance to lease line: 300 FT

Reservoir well spacing assigned acres Measurement: 160 Acres

Well plat: MASTIFF_22_FEDERAL_COM_501H_C102_20190117143428.pdf

MASTIFF_22_FEDERAL_COM_501H_LEASE_C102_20190117143429.pdf

Well work start Date: 01/14/2020

Duration: 25 DAYS

Section 3 - Well Location Table

Survey Type: RECTANGULAR

Describe Survey Type:

Datum: NAD83

Vertical Datum: NAVD88

Survey number: 23782

Reference Datum:

Wellbore	NS-Foot	NS Indicator	EW-Foot	EW Indicator	Twsp	Range	Section	Aliquot/Lot/Tract	Latitude	Longitude	County	State	Meridian	Lease Type	Lease Number	Elevation	MD	TVD	Will this well produce from this lease?
SHL Leg #1	300	FSL	1089	FEL	23S	34E	22	Aliquot SESE	32.283669	-103.45292	LEA	NEW MEXI CO	NEW MEXI CO	F	NMNM 132073	3433	0	0	
KOP Leg #1	114	FSL	369	FEL	23S	34E	22	Aliquot SESE	32.2831389	-103.4505556	LEA	NEW MEXI CO	NEW MEXI CO	F	NMNM 132073	-6494	9971	9927	

Operator Name: CENTENNIAL RESOURCE PRODUCTION LLC

Well Name: MASTIFF 22 FEDERAL COM

Well Number: 501H

Wellbore	NS-Foot	NS Indicator	EW-Foot	EW Indicator	Twsp	Range	Section	Aliquot/Lot/Tract	Latitude	Longitude	County	State	Meridian	Lease Type	Lease Number	Elevation	MD	TVD	Will this well produce from this lease?
PPP Leg #1-1	100	FSL	330	FEL	23S	34E	22	Aliquot SESE	32.283118	- 103.450464	LEA	NEW MEXICO	NEW MEXICO	F	NMNM 132073	- 7067	10870	10500	
EXIT Leg #1	100	FNL	330	FEL	23S	34E	22	Aliquot NENE	32.297085	- 103.450466	LEA	NEW MEXICO	NEW MEXICO	S	STATE	- 7067	15364	10500	
BHL Leg #1	100	FNL	330	FEL	23S	34E	22	Aliquot NENE	32.297085	- 103.450466	LEA	NEW MEXICO	NEW MEXICO	S	STATE	- 7067	15364	10500	

APD ID: 10400038195

Submission Date: 01/17/2019

Highlighted data
reflects the most
recent changes

Operator Name: CENTENNIAL RESOURCE PRODUCTION LLC

Well Name: MASTIFF 22 FEDERAL COM

Well Number: 501H

[Show Final Text](#)

Well Type: OIL WELL

Well Work Type: Drill

Section 1 - Geologic Formations

Formation ID	Formation Name	Elevation	True Vertical Depth	Measured Depth	Lithologies	Mineral Resources	Producing Formation
377588	RUSTLER	3433	935	935	SANDSTONE	NONE	N
377589	CAPITAN REEF	-1651	5084	5084	OTHER : CARBONATE	USEABLE WATER	N
377594	BELL CANYON	-1742	5175	5175	SANDSTONE	NATURAL GAS, OIL	N
377593	CHERRY CANYON	-2510	5943	5943	SANDSTONE	NATURAL GAS, OIL	N
377595	BRUSHY CANYON	-3893	7326	7326	SANDSTONE	NATURAL GAS, OIL	N
377596	BONE SPRING LIME	-5160	8593	8593	OTHER : CARBONATE	NATURAL GAS, OIL	N
377590	AVALON SAND	-5288	8721	8721	SHALE	CO2, NATURAL GAS, OIL	N
377591	FIRST BONE SPRING SAND	-6270	9703	9703	SANDSTONE	NATURAL GAS, OIL	N
377655	BONE SPRING 2ND	-6475	9908	9908		NATURAL GAS, OIL	Y

Section 2 - Blowout Prevention

Pressure Rating (PSI): 5M

Rating Depth: 9700

Equipment: The BOP and related equipment will meet or exceed the requirements of a 5M-psi system as set forth in On Shore Order No. 2. See attached BOP Schematic. A. Casinghead: 13 5/8" – 5,000 psi SOW x 13" – 5,000 psi WP Intermediate Spool: 13" – 5,000 psi WP x 11" – 5,000 psi WP Tubinghead: 11" – 5,000 psi WP x 7 1/16" – 15,000 psi WP B. Minimum Specified Pressure Control Equipment • Annular preventer • One Pipe ram, One blind ram • Drilling spool, or blowout preventer with 2 side outlets. Choke side will be a 3-inch minimum diameter, kill line shall be at least 2-inch diameter • 3 inch diameter choke line • 2 – 3 inch choke line valves • 2 inch kill line • 2 chokes with 1 remotely controlled from rig floor (see Figure 2) • 2 – 2 inch kill line valves and a check valve • Upper kelly cock valve with handle available • When the expected pressures approach working pressure of the system, 1 remote kill line tested to stack pressure (which shall run to the outer edge of the substructure and be unobstructed) • Lower kelly cock valve with handle available • Safety valve(s) and subs to fit all drill string connections in use • Inside BOP or float sub available • Pressure gauge on choke manifold • All BOPE connections subjected to well pressure shall be flanged, welded, or clamped • Fill-up line above the uppermost preventer. C. Auxiliary Equipment • Audio and visual mud monitoring equipment shall be placed to detect volume changes indicating loss or gain of circulating fluid volume. (OOS 1, III.C.2) • Gas Buster will be used below intermediate casing setting depth. • Upper and lower kelly cocks with handles, safety valve and subs to fit all drill string connections and a pressure gauge installed on choke manifold.

Operator Name: CENTENNIAL RESOURCE PRODUCTION LLC

Well Name: MASTIFF 22 FEDERAL COM

Well Number: 501H

Requesting Variance? YES

Variance request: Centennial Resource Production, LLC hereby requests to use a flex hose on the choke manifold for this well.

Testing Procedure: The BOP test shall be performed before drilling out of the surface casing shoe and will occur at a minimum: a. when initially installed b. whenever any seal subject to test pressure is broken c. following related repairs d. at 30 day intervals e. checked daily as to mechanical operating conditions. The ram type preventer(s) will be tested using a test plug to 250 psi (low) and 5,000 psi (high) (casinghead WP) with a test plug upon its installation onto the 13" surface casing. If a test plug is not used, the ram type preventer(s) shall be tested to 70% of the minimum internal yield pressure of the casing. The annular type preventer(s) shall be tested to 50% of its working pressure. Pressure will be maintained for at least 10 minutes or until provisions of the test are met, whichever is longer. • A Sundry Notice (Form 3160 5), along with a copy of the BOP test report, shall be submitted to the local BLM office within 5 working days following the test. • If the bleed line is connected into the buffer tank (header), all BOP equipment including the buffer tank and associated valves will be rated at the required BOP pressure. • The BLM office will be provided with a minimum of four (4) hours' notice of BOP testing to allow witnessing. The BOP Configuration, choke manifold layout, and accumulator system, will be in compliance with Onshore Order 2 for a 5,000 psi system. A remote accumulator will be used. Pressures, capacities, and specific placement and use of the manual and/or hydraulic controls, accumulator controls, bleed lines, etc., will be identified at the time of the BLM 'witnessed BOP test. Any remote controls will be capable of both opening and closing all preventers and shall be readily accessible

Choke Diagram Attachment:

Choke_Diagram_5K_20190117144554.pdf

BOP Diagram Attachment:

BOP_Diagram_5M_20190117144604.pdf

Section 3 - Casing

Casing ID	String Type	Hole Size	Csg Size	Condition	Standard	Tapered String	Top Set MD	Bottom Set MD	Top Set TVD	Bottom Set TVD	Top Set MSL	Bottom Set MSL	Calculated casing length MD	Grade	Weight	Joint Type	Collapse SF	Burst SF	Joint SF Type	Joint SF	Body SF Type	Body SF
1	CONDUCTOR	26	20.0	NEW	API	N	0	120	0	120	3433	3313	120	H-40	94	OTHER - WELD						
2	SURFACE	17.5	13.375	NEW	API	N	0	1800	0	1800	3433	1633	1800	J-55	54.5	OTHER - BTC	1.27	3.07	DRY	9.27	DRY	8.7
3	INTERMEDIATE	12.25	9.625	NEW	API	N	0	5050	0	5050	3433	-1617	5050	J-55	40	LT&C	1.39	1.51	DRY	2.57	DRY	3.12
4	PRODUCTION	8.75	5.5	NEW	API	N	0	9971	0	9927	3433	-6494	9971	P-110	20	OTHER - TMK UP DQX	2.27	2.58	DRY	3.23	DRY	3.23
5	PRODUCTION	8.5	5.5	NEW	API	N	9971	15364	9927	10500	-6494	-7067	5393	P-110	20	OTHER - TMK UP DQX	2.14	2.44	DRY	55.93	DRY	55.93

Operator Name: CENTENNIAL RESOURCE PRODUCTION LLC

Well Name: MASTIFF 22 FEDERAL COM

Well Number: 501H

Casing Attachments

Casing ID: 1 **String Type:** CONDUCTOR

Inspection Document:

Spec Document:

Tapered String Spec:

Casing Design Assumptions and Worksheet(s):

Casing ID: 2 **String Type:** SURFACE

Inspection Document:

Spec Document:

Tapered String Spec:

Casing Design Assumptions and Worksheet(s):

CASING_ASSUMPTIONS_WORKSHEET_20190117145057.pdf

Casing ID: 3 **String Type:** INTERMEDIATE

Inspection Document:

Spec Document:

Tapered String Spec:

Casing Design Assumptions and Worksheet(s):

CASING_ASSUMPTIONS_WORKSHEET_20190117145105.pdf

Operator Name: CENTENNIAL RESOURCE PRODUCTION LLC

Well Name: MASTIFF 22 FEDERAL COM

Well Number: 501H

Casing Attachments

Casing ID: 4 **String Type:** PRODUCTION

Inspection Document:

Spec Document:

Tapered String Spec:

Casing Design Assumptions and Worksheet(s):

CASING_ASSUMPTIONS_WORKSHEET_20190117145115.pdf

Technical_Data_Sheet_TMK_UP_DQX_5.5_x_20_P110_CY_20190628091653.pdf

Casing ID: 5 **String Type:** PRODUCTION

Inspection Document:

Spec Document:

Tapered String Spec:

Casing Design Assumptions and Worksheet(s):

CASING_ASSUMPTIONS_WORKSHEET_20190117145124.pdf

Technical_Data_Sheet_TMK_UP_DQX_5.5_x_20_P110_CY_20190628091708.pdf

Section 4 - Cement

String Type	Lead/Tail	Stage Tool Depth	Top MD	Bottom MD	Quantity(sx)	Yield	Density	Cu Ft	Excess%	Cement type	Additives
PRODUCTION	Lead		0	0	0	0	0	0		0	0

CONDUCTOR	Lead		0	120	121	1.49	12.9	181		Grout	Bentonite 4% BWOC, Cellophane #/sx, CaCl2 2% BWOC.
-----------	------	--	---	-----	-----	------	------	-----	--	-------	--

Operator Name: CENTENNIAL RESOURCE PRODUCTION LLC

Well Name: MASTIFF 22 FEDERAL COM

Well Number: 501H

String Type	Lead/Tail	Stage Tool Depth	Top MD	Bottom MD	Quantity(sx)	Yield	Density	Cu Ft	Excess%	Cement type	Additives
SURFACE	Lead		0	1300	1038	1.74	13.5	1806	100	Class C Premium	Premium Gel Bentonite 4%, C-45 Econolite 0.25%, Phenoseal 0.25#/sk, CaCl 1%, Defoamer C-41P 0.75%
SURFACE	Tail		1300	1800	518	1.34	14.8	695	100	Class C Premium	C-45 Econolite 0.10%, CaCl 1.0%
INTERMEDIATE	Lead		0	4550	1100	3.44	10.7	3785	150	TXI Lightweight	Salt 1.77/sk, C-45 Econolite 2.25%, STE 6.00%, Citric Acid 0.18%, C-19 0.10%, CSA-1000 0.20%, C-530P 0.30%, CTB-15 LCM 7#/sk, Gyp Seal 8#/sk
INTERMEDIATE	Tail		4550	5050	141	1.33	14.8	188	20	Class C Premium	C-45 Econolite 0.10%, Citric acid 0.05%, C503P 0.25%
PRODUCTION	Lead		0	9971	976	3.41	10.6	3328	30	TXI Lightweight	Salt 8.98#/sk, STE 6.00%, Citric acid 0.20%, CSA-1000 0.23%, C47B 0.10%, C-503P 0.30%
PRODUCTION	Tail		9971	15364	1245	1.24	14.2	1544	25	50:25:25 Class H: Poz: CPO18	Citric acid 0.03%, CSA-1000 0.05%, C47B 0.25%, C-503P 0.30%

Section 5 - Circulating Medium

Mud System Type: Closed

Will an air or gas system be Used? NO

Description of the equipment for the circulating system in accordance with Onshore Order #2:

Diagram of the equipment for the circulating system in accordance with Onshore Order #2:

Describe what will be on location to control well or mitigate other conditions: Sufficient quantities of mud materials will be on the well site at all times for the purpose of assuring well control and maintaining wellbore integrity. Surface interval will employ fresh water mud. The intermediate hole will utilize a diesel emulsified brine fluid to inhibit salt washout and prevent severe fluid losses. The production hole will employ oil base fluid to inhibit formation reactivity and of the appropriate density to maintain well control.

Describe the mud monitoring system utilized: Centrifuge separation system. Open tank monitoring with EDR will be used for drilling fluids and return volumes. Open tank monitoring will be used for cement and cuttings return volumes. Mud properties will be monitored at least every 24 hours using industry accepted mud check practices.

Circulating Medium Table

Operator Name: CENTENNIAL RESOURCE PRODUCTION LLC

Well Name: MASTIFF 22 FEDERAL COM

Well Number: 501H

Top Depth	Bottom Depth	Mud Type	Min Weight (lbs/gal)	Max Weight (lbs/gal)	Density (lbs/cu ft)	Gel Strength (lbs/100 sqft)	PH	Viscosity (CP)	Salinity (ppm)	Filtration (cc)	Additional Characteristics
0	1536 4	OTHER : Brine/OBM	8.8	9.5							
0	1800	OTHER : Fresh Water	8.6	9.5							
1800	5050	OTHER : Brine	9.8	10							

Section 6 - Test, Logging, Coring

List of production tests including testing procedures, equipment and safety measures:

Will utilize MWD/LWD (Gamma ray logging) from intermediate hole to TD of the well.

List of open and cased hole logs run in the well:

GR

Coring operation description for the well:

n/a

Section 7 - Pressure

Anticipated Bottom Hole Pressure: 4904

Anticipated Surface Pressure: 2594

Anticipated Bottom Hole Temperature(F): 170

Anticipated abnormal pressures, temperatures, or potential geologic hazards? NO

Describe:

Contingency Plans geohazards description:

Contingency Plans geohazards attachment:

Hydrogen Sulfide drilling operations plan required? YES

Hydrogen sulfide drilling operations plan:

Dandie_503_and_Mastiff_501_502_H2S_plan_20190117145756.pdf

Operator Name: CENTENNIAL RESOURCE PRODUCTION LLC

Well Name: MASTIFF 22 FEDERAL COM

Well Number: 501H

Section 8 - Other Information

Proposed horizontal/directional/multi-lateral plan submission:

MASTIFF_22_FEDERAL_COM_501H___CDEV_PLAN__1_20190117145824.pdf

Other proposed operations facets description:

We are planning to use a spudder rig to preset surface casing.
Gas Capture Plan is attached.

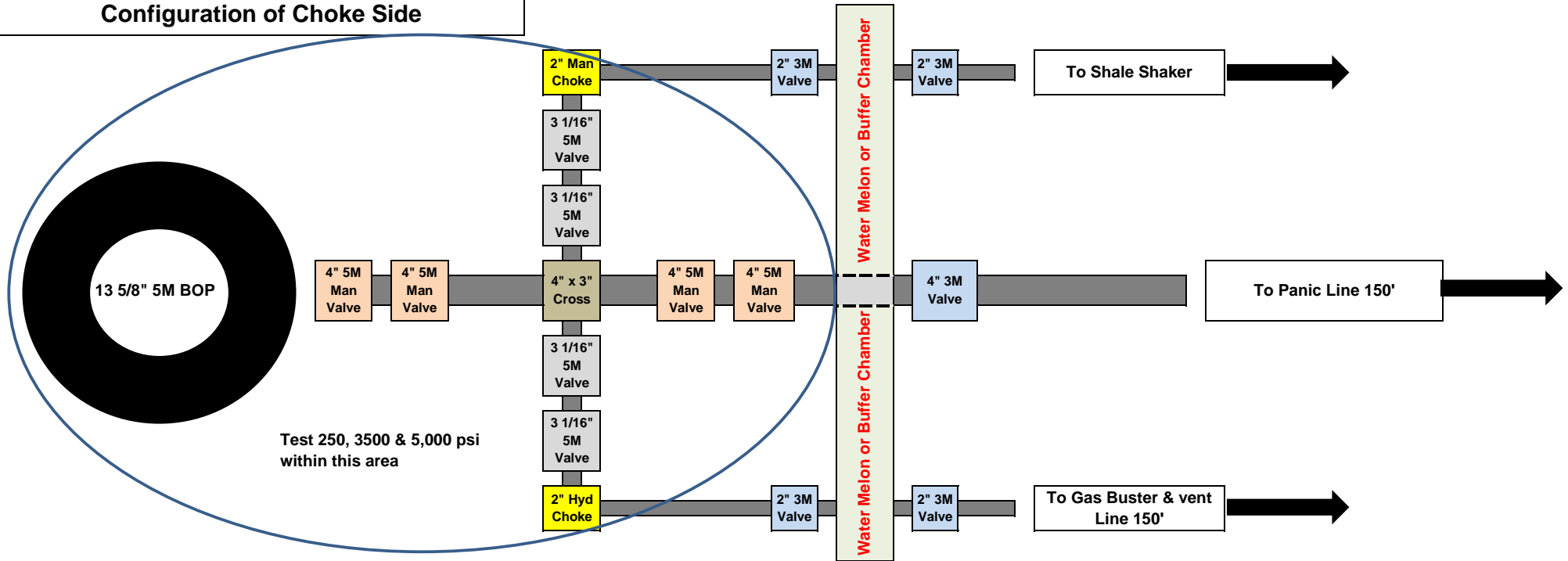
Other proposed operations facets attachment:

DandieMastiff_Gas_Capture_Plan_20190117145837.pdf

Other Variance attachment:

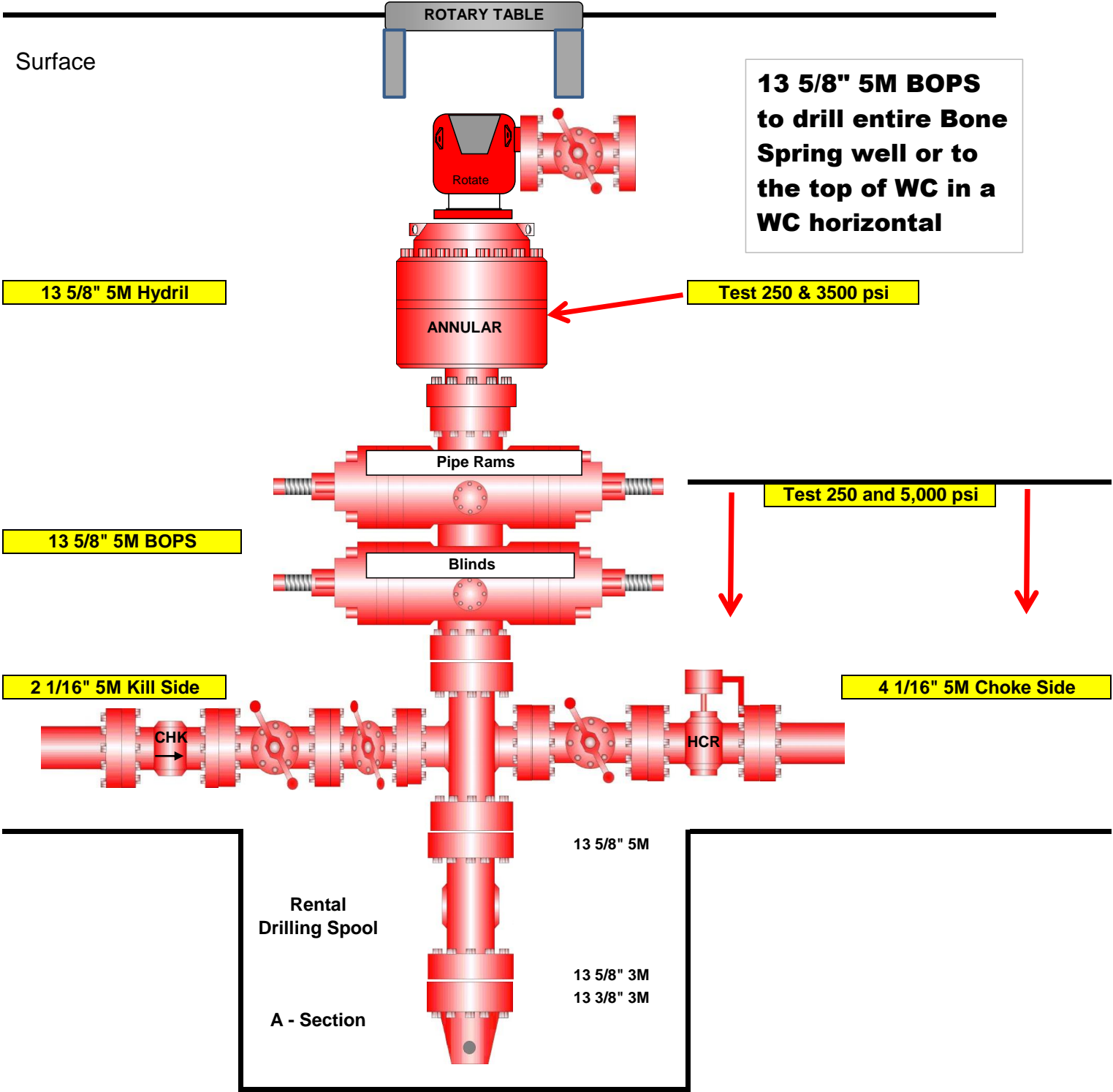
Flex_Hose_Specs_20190117145917.pdf

Centennial - Any Bone Spring Well: Minimum Configuration of Choke Side



For Well Design	
Surface	13 3/8
Inter.	9 5/8
Prod.	5 1/2

Well Name :



CASING ASSUMPTIONS WORKSHEET:

Centralizer Program:

Surface: - 3 welded bow spring centralizers, one on each of the bottom 3 joints, plus one on the shoe joint (4 minimum)
 - No Cement baskets will be run

Production: - 1 welded bow spring centralizer on a stop ring 6' above float shoe
 - 1 centralizer every other joint to the top of the tail cement
 - 1 centralizer every 4 joints to 500' below the top of the lead cement
 - The actual number and placement of centralizers will be determined from hole deviation and potential production zones. Centralizers will be run for maximum practical standoff and through all potential productive zones.

- All casing strings below the conductor shall be tested, prior to drilling out the casing shoe, to 0.22 psi/ft of casing string length or 1500 psi, whichever is greater, but not to exceed 70% of the internal yield pressure of the casing. If pressure declines more than 10 percent in 30 minutes, corrective action will be taken.

No freshly hard banded pipe will be rotated in the surface casing

- CENTENNIAL RESOURCE DEVELOPMENT will not employ an air-drill rig for the surface casing. The casing shoe will be tested by drilling 5'-10' out from under the shoe and pressure testing to the maximum expected mud weight equivalent as shown in the mud program listed in the drilling plan.

CASING ASSUMPTIONS WORKSHEET:

Centralizer Program:

Surface: - 3 welded bow spring centralizers, one on each of the bottom 3 joints, plus one on the shoe joint (4 minimum)
 - No Cement baskets will be run

Production: - 1 welded bow spring centralizer on a stop ring 6' above float shoe
 - 1 centralizer every other joint to the top of the tail cement
 - 1 centralizer every 4 joints to 500' below the top of the lead cement
 - The actual number and placement of centralizers will be determined from hole deviation and potential production zones. Centralizers will be run for maximum practical standoff and through all potential productive zones.

- All casing strings below the conductor shall be tested, prior to drilling out the casing shoe, to 0.22 psi/ft of casing string length or 1500 psi, whichever is greater, but not to exceed 70% of the internal yield pressure of the casing. If pressure declines more than 10 percent in 30 minutes, corrective action will be taken.

No freshly hard banded pipe will be rotated in the surface casing

- CENTENNIAL RESOURCE DEVELOPMENT will not employ an air-drill rig for the surface casing. The casing shoe will be tested by drilling 5'-10' out from under the shoe and pressure testing to the maximum expected mud weight equivalent as shown in the mud program listed in the drilling plan.

CASING ASSUMPTIONS WORKSHEET:

Centralizer Program:

Surface: - 3 welded bow spring centralizers, one on each of the bottom 3 joints, plus one on the shoe joint (4 minimum)
 - No Cement baskets will be run

Production: - 1 welded bow spring centralizer on a stop ring 6' above float shoe
 - 1 centralizer every other joint to the top of the tail cement
 - 1 centralizer every 4 joints to 500' below the top of the lead cement
 - The actual number and placement of centralizers will be determined from hole deviation and potential production zones. Centralizers will be run for maximum practical standoff and through all potential productive zones.

- All casing strings below the conductor shall be tested, prior to drilling out the casing shoe, to 0.22 psi/ft of casing string length or 1500 psi, whichever is greater, but not to exceed 70% of the internal yield pressure of the casing. If pressure declines more than 10 percent in 30 minutes, corrective action will be taken.

No freshly hard banded pipe will be rotated in the surface casing

- CENTENNIAL RESOURCE DEVELOPMENT will not employ an air-drill rig for the surface casing. The casing shoe will be tested by drilling 5'-10' out from under the shoe and pressure testing to the maximum expected mud weight equivalent as shown in the mud program listed in the drilling plan.

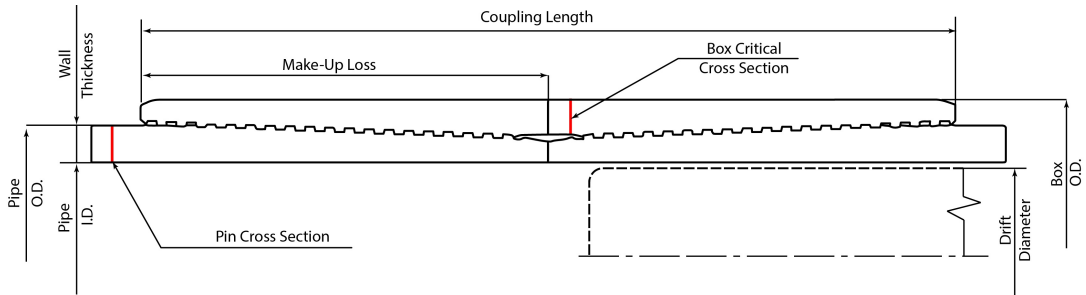
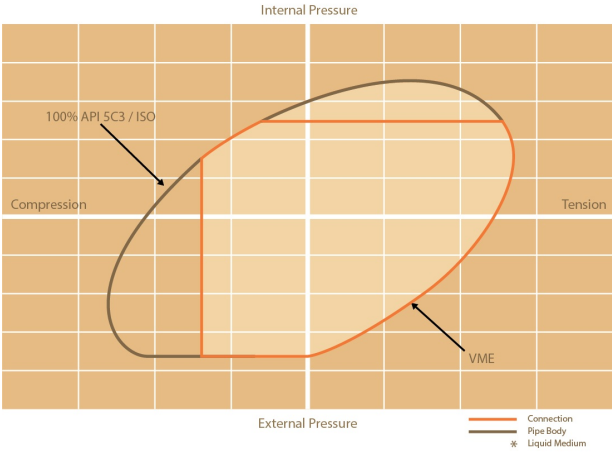
TECHNICAL DATA SHEET TMK UP DQX 5.5 X 20 P110 CY

TUBULAR PARAMETERS		PIPE BODY PROPERTIES	
Nominal OD, (inch)	5.500	PE Weight, (lbs/ft)	19.81
Wall Thickness, (inch)	0.361	Nominal Weight, (lbs/ft)	20.00
Pipe Grade	P110 CY	Nominal ID, (inch)	4.778
Coupling	Regular	Drift Diameter, (inch)	4.653
Coupling Grade	P110 CY	Nominal Pipe Body Area, (sq inch)	5.828
Drift	Standard	Yield Strength in Tension, (klbs)	641
CONNECTION PARAMETERS		Min. Internal Yield Pressure, (psi)	12 640
		Collapse Pressure, (psi)	11 110

Connection OD (inch)	6.05
Connection ID, (inch)	4.778
Make-Up Loss, (inch)	4.122
Connection Critical Area, (sq inch)	5.828
Yield Strength in Tension, (klbs)	641
Yeld Strength in Compression, (klbs)	641
Tension Efficiency	100%
Compression Efficiency	100%
Min. Internal Yield Pressure, (psi)	12 640
Collapse Pressure, (psi)	11 110
Uniaxial Bending (deg/100ft)	92.0

MAKE-UP TORQUES

Yield Torque, (ft-lb)	20 600
Minimum Make-Up Torque, (ft-lb)	11 600
Optimum Make-Up Torque, (ft-lb)	12 900
Maximum Make-Up Torque, (ft-lb)	14 100
Operating Torque, (ft-lb)	17 500



NOTE: The content of this Technical Data Sheet is for general information only and does not guarantee performance or imply fitness for a particular purpose, which only a competent drilling professional can determine considering the specific installation and operation parameters. This information supersedes all prior versions for this connection. Information that is printed or downloaded is no longer controlled by TMK and might not be the latest information. Anyone using the information herein does so at their own risk. To verify that you have the latest technical information, please contact PAO "TMK" Technical Sales in Russia (Tel: +7 (495) 775-76-00, Email: techsales@tmk-group.com) and TMK IPSCO in North America (Tel: +1 (281)949-1044, Email: techsales@tmk-ipsco.com).

CASING ASSUMPTIONS WORKSHEET:

Centralizer Program:

Surface: - 3 welded bow spring centralizers, one on each of the bottom 3 joints, plus one on the shoe joint (4 minimum)
 - No Cement baskets will be run

Production: - 1 welded bow spring centralizer on a stop ring 6' above float shoe
 - 1 centralizer every other joint to the top of the tail cement
 - 1 centralizer every 4 joints to 500' below the top of the lead cement
 - The actual number and placement of centralizers will be determined from hole deviation and potential production zones. Centralizers will be run for maximum practical standoff and through all potential productive zones.

- All casing strings below the conductor shall be tested, prior to drilling out the casing shoe, to 0.22 psi/ft of casing string length or 1500 psi, whichever is greater, but not to exceed 70% of the internal yield pressure of the casing. If pressure declines more than 10 percent in 30 minutes, corrective action will be taken.

No freshly hard banded pipe will be rotated in the surface casing

- CENTENNIAL RESOURCE DEVELOPMENT will not employ an air-drill rig for the surface casing. The casing shoe will be tested by drilling 5'-10' out from under the shoe and pressure testing to the maximum expected mud weight equivalent as shown in the mud program listed in the drilling plan.

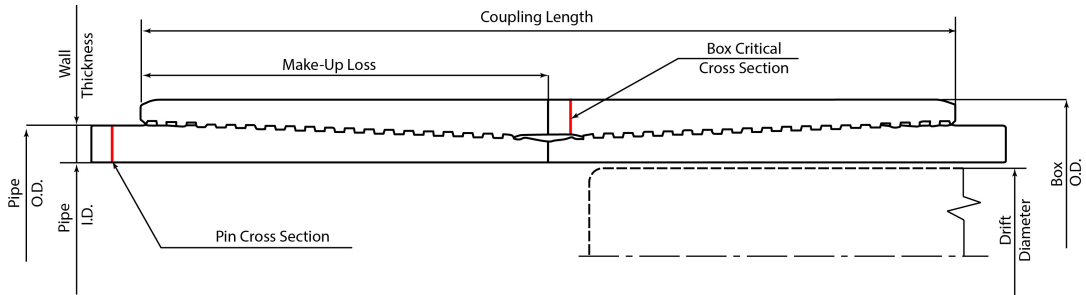
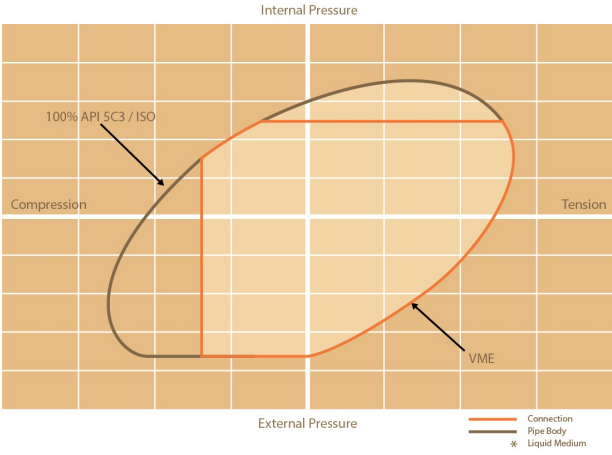
TECHNICAL DATA SHEET TMK UP DQX 5.5 X 20 P110 CY

TUBULAR PARAMETERS		PIPE BODY PROPERTIES	
Nominal OD, (inch)	5.500	PE Weight, (lbs/ft)	19.81
Wall Thickness, (inch)	0.361	Nominal Weight, (lbs/ft)	20.00
Pipe Grade	P110 CY	Nominal ID, (inch)	4.778
Coupling	Regular	Drift Diameter, (inch)	4.653
Coupling Grade	P110 CY	Nominal Pipe Body Area, (sq inch)	5.828
Drift	Standard	Yield Strength in Tension, (klbs)	641
CONNECTION PARAMETERS		Min. Internal Yield Pressure, (psi)	12 640
		Collapse Pressure, (psi)	11 110

Connection OD (inch)	6.05
Connection ID, (inch)	4.778
Make-Up Loss, (inch)	4.122
Connection Critical Area, (sq inch)	5.828
Yield Strength in Tension, (klbs)	641
Yeld Strength in Compression, (klbs)	641
Tension Efficiency	100%
Compression Efficiency	100%
Min. Internal Yield Pressure, (psi)	12 640
Collapse Pressure, (psi)	11 110
Uniaxial Bending (deg/100ft)	92.0

MAKE-UP TORQUES

Yield Torque, (ft-lb)	20 600
Minimum Make-Up Torque, (ft-lb)	11 600
Optimum Make-Up Torque, (ft-lb)	12 900
Maximum Make-Up Torque, (ft-lb)	14 100
Operating Torque, (ft-lb)	17 500



NOTE: The content of this Technical Data Sheet is for general information only and does not guarantee performance or imply fitness for a particular purpose, which only a competent drilling professional can determine considering the specific installation and operation parameters. This information supersedes all prior versions for this connection. Information that is printed or downloaded is no longer controlled by TMK and might not be the latest information. Anyone using the information herein does so at their own risk. To verify that you have the latest technical information, please contact PAO "TMK" Technical Sales in Russia (Tel: +7 (495) 775-76-00, Email: techsales@tmk-group.com) and TMK IPSCO in North America (Tel: +1 (281)949-1044, Email: techsales@tmk-ipsco.com).



HYDROGEN SULFIDE CONTINGENCY PLAN

Dandie 22 Fed Com 503H and Mastiff 22 501H, 502H

Section 22

T 23S R 34E

Lea County, NM

Initial Date: 12/17/18

Revision Date:

Table of Contents

Page 3: Introduction

Page 4: Directions to Location

Page 5: Safe Briefing Areas

Page 6: Drill Site Location Setup

Page 7: Toxicity of Various Gases

Page 10: H₂S Required Equipment

Page 11: Determination of Radius of Exposure

Page 12: Emergency Contact List

INTRODUCTION

This plan specifies precautionary measures, safety equipment, emergency procedures, responsibilities, duties, and the compliance status pertaining to the production operations of Hydrogen Sulfide producing wells on:

Centennial Resource Development, Inc.

This plan will be in full effect prior to and continuing with all drilling operations for all wells producing potential Hydrogen Sulfide on the

Dandie 22 Fed Com 503H and Mastiff 22 501H, 502H

This plan was developed in response to the potential hazards involved when producing formations that may contain Hydrogen Sulfide (H₂S). It has been written in compliance with current New Mexico Oil Conservation Division Rule 118 and Bureau of Land Management 43 CFR 3160 Onshore Order No. 6.

All personnel shall receive proper H₂S training in accordance with Onshore Order III.C.3.a

This plan shall require the full cooperation and efforts of all individuals participating in the production of potential H₂S wells.

Each individual is required to know their assigned responsibilities and duties in regard to normal production operations and emergency procedures.

Each person should thoroughly understand and be able to use all safety related equipment on the production facility.

Each person should become familiar with the location of all safety equipment and become involved in ensuring that all equipment is properly stored, easily accessible, and routinely maintained.

An ongoing training program will remain in effect with regular training, equipment inspections, and annual certifications for all personnel.

Centennial Resource Development, Inc. shall make every reasonable effort to provide all possible safeguards to protect all personnel, both on this location and in the immediate vicinity, from the harmful effects of H₂S exposure, if a release to the atmosphere should occur.

DIRECTIONS TO LOCATION

Dandie 22 Fed Com 503H and Mastiff 22 501H, 502H

Section 22

T 23S R 34E

Lea County, NM

COMMENCING AT THE INTERSECTION OF HIGHWAY 18 AND HIGHWAY 128 IN JAL, NEW MEXICO, PROCEED IN A NORTHWESTERLY, THEN WESTERLY DIRECTION ALONG HIGHWAY 128 APPROXIMATELY 20.6 MILES TO THE JUNCTION OF THIS ROAD AND DELAWARE BASIN ROAD TO THE NORTH; TURN RIGHT AND PROCEED IN A NORTHERLY DIRECTION APPROXIMATELY 3.0 MILES TO THE JUNCTION OF THIS ROAD AND SHELL ROAD TO THE EAST; TURN RIGHT AND PROCEED IN AN EASTERLY DIRECTION APPROXIMATELY 2.3 MILES TO THE JUNCTION OF THIS ROAD AND ANTELOPE RIDGE ROAD TO THE NORTH; TURN LEFT AND PROCEED IN A NORTHERLY DIRECTION APPROXIMATELY 1.6 MILES TO THE JUNCTION OF THIS ROAD AND ADOBE ROAD ROAD TO THE NORTHEAST; TURN RIGHT AND PROCEED IN A NORTHEASTERLY DIRECTION APPROXIMATELY 1.0 MILES TO THE JUNCTION OF THIS ROAD AND AN EXISTING ROAD TO THE EAST; TURN RIGHT AND PROCEED IN A EASTERLY DIRECTION APPROXIMATELY 0.3 MILES TO THE BEGINNING OF THE PROPOSED ACCESS FOR THE MASTIFF 22 FEDERAL STATE COM 4H WELL PAD TO THE SOUTH; FOLLOW ROAD FLAGS IN A SOUTHERLY DIRECTION APPROXIMATELY 579' TO THE BEGINNING OF THE PROPOSED ACCESS ROAD TO THE SOUTHWEST; FOLLOW ROAD FLAGS IN A SOUTHWESTERLY, THEN SOUTHERLY, THEN WESTERLY DIRECTION APPROXIMATELY 314' TO THE PROPOSED LOCATION.

TOTAL DISTANCE FROM JAL, NEW MEXICO TO THE PROPOSED WELL LOCATION IS APPROXIMATELY 29.0 MILES.

SAFE BRIEFING AREAS

Two areas will be designated as “SAFE BRIEFING AREAS”.

The Primary Safe Briefing Area

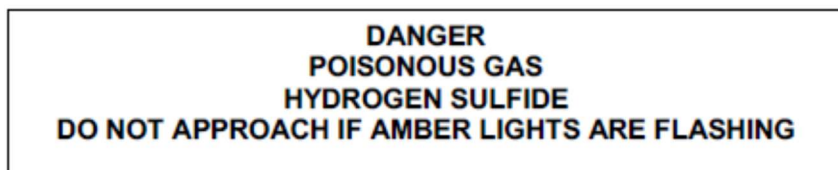
If the Primary Safe Briefing Area cannot be used due to wind conditions; the designated secondary safe briefing area will be used.

These two areas are so designated for accessibility reasons related to self-contained safe breathing air device locations, evacuation muster point utility, and for ease of overall communication, organizational support, as well as the all-important prevailing wind directions. Drawings of the facility denoting these locations are included on Page 15.

If H₂S is detected in concentrations equal to or in excess of 15 PPM, all personnel not assigned emergency duties are to assemble in the appropriate “SAFE BRIEFING AREA” for instructions.

Wind Direction Indicators: A windsock, shall be positioned, allowing the wind direction to be observed from anywhere on the charted facility location.

Warning-DANGER SIGNS for Approaching Traffic: All signs shall also be illuminated under conditions of poor visibility.



An amber strobe light system will be activated for H₂S concentrations of 10 PPM or greater and an audible alarm will sound when H₂S exceeds 15 ppm, and. This condition will exist until the all clear is given.

DRILL SITE LOCATION:

1. The drilling rig should be situated on location such that the prevailing winds blow across the rig toward the reserve pit or at right angles to a line from the rig to the reserve pit.
2. The entrance to the location should be designated so that it can be barricaded if Hydrogen Sulfide emergency conditions arise. An auxiliary exit (or entrance) should be available in case of a catastrophe; a shift in wind direction would not preclude escape from the location. Appropriate warning signs and flags should be placed at all location entrances.
3. Once H₂S safety procedures are established on location, no beards or facial hair, which will interfere with face seal or mask, will be allowed on location.
4. A minimum of two BRIEFING AREAS will be established, no less than 250 feet from the wellhead and in such location that at least one area will be up-wind from the well at all times. Upon recognition of an emergency situation, all personnel should assemble at the designated briefing areas for instructions.
5. A safety equipment trailer will be station at one of the briefing areas.
6. Windsocks will be installed and wind streamers (6 to 8 feet above ground level) placed at the location entrance. Windsocks shall be illuminated for nighttime operations. Personnel should develop wind direction consciousness.
7. The mud-logging trailer will be located so as to minimize the danger from the gas that breaks out of the drilling fluid.
8. Shale shaker mud tanks will be located so as to minimize the danger from gas that breaks out of the drilling fluid.
9. Electric power plant(s) will be located as far from the well bore as practical so that it may be used under conditions where it otherwise would have to be shut down.
10. When approaching depth where Hydrogen Sulfide may be encountered, appropriate warning signs will be posted on all access roads to the location and at the foot of all stairways to the derrick floor.
11. Appropriate smoking areas will be designated, and smoking will be prohibited elsewhere.

The table below lists various poisonous gases and the concentrations at which they become dangerous.

TOXICITY OF VARIOUS GASES

TOXICITY OF GASES (Taken from API RP-49 September 1974 – Re-issued August 1978)					
Common Name	Chemical Formula	Gravity (Air = 1)	Threshold 1 Limit	Hazardous 2 Limit	Lethal 3 Limit
Hydrogen Sulfide	H ₂ S	1.18	10 ppm	250 ppm/1hr	600 ppm
Sulfur Dioxide	SO ₂	2.21	20 ppm	---	1000 ppm
Carbon Monoxide	CO	0.97	50 ppm	400 ppm/1hr	1000 ppm
Carbon Dioxide	CO ₂	1.52	5000 ppm	5%	10%
Methane	CH ₄	0.55	90000 ppm	Combustible Above 5% in Air	

1. Threshold concentration at which it is believed that all workers may repeatedly be exposed day after day, without adverse effect	2. Hazardous concentration that may cause death	3. Lethal concentration that will cause death with short-term exposure
---	---	--

Properties of Gases

The produced gas will probably be a mixture of Carbon Dioxide, Hydrogen Sulfide, and Methane.

Carbon Dioxide

Carbon Dioxide (CO₂) is usually considered inert and is commonly used to extinguish fires.

It is heavier than air (1.52 times) and it will concentrate in low areas of still air.

Humans cannot breathe air containing more than 10% CO₂ without losing consciousness. Air containing 5% CO₂ will cause disorientation in a few minutes.

Continued exposures to CO₂ after being affected will cause convulsions, coma, and respiratory failure.

The threshold limit of CO₂ is 5000 ppm.

Short-term exposure to 50,000 PPM (5%) is reasonable. This gas is colorless and odorless and can be tolerated in relatively high concentrations.

Hydrogen Sulfide

Hydrogen Sulfide (H₂S) itself is a colorless, transparent gas and is flammable. It is heavier than air and, hence, may accumulate in low places.

Although the slightest presence of H₂S in the air is normally detectable by its characteristic “rotten egg” odor, it is dangerous to rely on the odor as a means of detecting excessive concentrations because the sense of smell is rapidly lost, allowing lethal concentrations to be accumulated without warning. The following table indicates the poisonous nature of Hydrogen Sulfide.

HYDROGEN SULFIDE TOXICITY			
Concentration			Effects
%H ₂ S	PPM	GR/100 SCF 1	
0.001	10	0.65	Safe for 8 hours without respirator. Obvious and unpleasant odor.
0.002	20	1.30	Burning in eyes and irritation of respiratory tract after on hour.
0.01	100	6.48	Kills smell in 3 to 15 minutes; may sting eyes and throat.
0.02	200	12.96	Kills smell shortly; stings eyes and throat.
0.05	500	32.96	Dizziness; breathing ceases in a few minutes; need prompt artificial respiration.
0.07	700	45.92	Unconscious quickly; death will result if not rescued promptly
0.10	1000	64.80	DEATH!
Note: 1 grain per 100 cubic feet			

Sulfur Dioxide

Sulfur Dioxide is a colorless, transparent gas and is non-flammable.

Sulfur Dioxide (SO₂) is produced during the burning of H₂S. Although SO₂ is heavier than air, it will be picked up by a breeze and carried downwind at elevated temperatures. Since Sulfur Dioxide is extremely irritating to the eyes and mucous membranes of the upper respiratory tract, it has exceptionally good warning powers in this respect. The following table indicates the toxic nature of the gas.

SULFUR DIOXIDE TOXICITY		
Concentration		Effects
%SO ₂	PPM	
0.0005	3 to 5	Pungent odor-normally a person can detect SO ₂ in this range.
0.0012	12	Throat irritation, coughing, and constriction of the chest tearing and smarting of eyes.
0.15	150	So irritating that it can only be endured for a few minutes.
0.05	500	Causes a sense of suffocation, even with first breath.

H₂S REQUIRED EQUIPMENT LIST

RESPIRATORY SAFETY SYSTEMS

- Working cascade system available on rig floor and pit system & 750' of air line hose
- Four (4) breathing air manifolds
- Four (4) 30-minute rescue packs
- Five (5) work/Escape units
- Five (5) escape units
- One (1) filler hose for the work/escape/rescue units

DETECTION AND ALARM SYSTEM

- 4 channel H₂S monitor
- 4 wireless H₂S monitors
- H₂S alarm system (Audible/Red strobe)
- Personal gas monitor for each person on location
- Gas sample tubes

WELL CONTROL EQUIPMENT

- Flare line with remote ignitor and backup flare gun, placed 150' from wellhead
- Choke manifold with remotely operated choke
- Mud gas separator

VISUAL WARNING SYSTEMS

- One color code condition sign will be placed at each entrance reflecting possible conditions at the site
- A colored condition flag will be on display, reflecting current condition at the site at the time
- At least 4 wind socks placed on location, visible at all angles and locations

MUD PROGRAM

- Mud will contain sufficient weight and additives to control and minimize H₂S

METALLURGY

- All drill strings, casing, tubing, wellhead, BOP, spools, kill lines, choke manifold and lines, and valves shall be suitable for anticipated H₂S volume and pressure

COMMUNICATION

- Cell phones, intercoms, and satellite phones will be available on location

ADDITIONAL SAFETY RELATED ITEMS

- Stretcher
- 2 OSHA full body harness
- 20# class ABC fire extinguisher

DETERMINATION OF RADIUS OF EXPOSURE

Potentially hazardous volume means a volume of gas of such H₂S concentration and flow rate that it may result in radius of exposure-calculated ambient concentrations of 100 ppm H₂S at any occupied residence, school, church, park, school bus stop, place of business or other area where the public could reasonably be expected to frequent, or 500 ppm H₂S at any Federal, State, County or municipal road or highway.

Currently there are no residence located within the ROE

Radius of exposure means the calculation resulting from using the Pasquill -Gifford derived equation, or by such other method(s) that may be approved by the authorized officer. Advanced Fire and Safety has provided the Pasquill-Gifford formula in excel format for simple calculations.

NEW MEXICO OIL & GAS CONSERVATION DIVISION 118

Dandie 22 Fed Com 503H and Mastiff 22 501H, 502H

H₂S Concentration- **50** PPM (Block 13)

Maximum Escape Volume- **3000** MCF/Day (Block 13)

100 PPM Radius of Exposure (Block 15)- **31**
(Formula= $1.589 \times (B5/1000000) \times (B6 \times 1000) \times .6258$)

500 PPM Radius of Exposure (Block 16)- **14**
(Formula= $.4546 \times (B5/1000000) \times (B6 \times 1000) \times .6258$)

EMERGENCY CONTACT LIST

911 is available in the area			
NAME	POSITION	COMPANY	NUMBER
Centennial Contacts			
Jeremy Ray	Drilling Engineer	CDEV	303-263-7872
Ricky Mills/John Helm	Superintendent	CDEV	432-305-1068
Mike Ponder/Wayne Miller	Field Superintendent	CDEV	432-287-3003
Brett Thompson	Drilling Manager	CDEV	720-656-7027
Reggie Phillips	HSE Manager	CDEV	432-638-3380
H&P 650 Drilling Office	Drilling Supervisor	CDEV	432-538-3343
Local Emergency Response			
Fire Department			575-395-2511
Jal Community Hospital			505-395-2511
State Police			505-827-9000
Lea County Sheriff			575-396-3611
Safety Contractor			
Advanced Safety	Office	Advanced Safety	833-296-3913
Joe Gadway	Permian Supervisor	Advanced Safety	318-446-3716
Clint Hudson	Operations Manager	Advanced Safety	337-552-8330
Well Control Company			
Wild Well Control			866-404-9564
Contractors			
Tommy E Lee	Pump Trucks		432-813-7140
Paul Smith	Drilling Fluids	Momentum	307-258-6254
Compass Coordinators	Cement	Compass	432-561-5970

NEW MEXICO

LEA

DANDIE/ MASTIFF

MASTIFF 22 FEDERAL COM 501H

MASTIFF 22 FEDERAL COM 501H

Plan: PWP0

Survey Report - Geographic

19 December, 2018

Company:	NEW MEXICO	Local Co-ordinate Reference:	Well MASTIFF 22 FEDERAL COM 501H
Project:	LEA	TVD Reference:	RKB=3431.4 @ 3456.4usft (HP 650)
Site:	DANDIE/ MASTIFF	MD Reference:	RKB=3431.4 @ 3456.4usft (HP 650)
Well:	MASTIFF 22 FEDERAL COM 501H	North Reference:	True
Wellbore:	MASTIFF 22 FEDERAL COM 501H	Survey Calculation Method:	Minimum Curvature
Design:	PWP0	Database:	Centennial EDM SQL Server

Project	LEA		
Map System:	Universal Transverse Mercator (US Survey Feet)	System Datum:	Mean Sea Level
Geo Datum:	North American Datum 1983		
Map Zone:	Zone 13N (108 W to 102 W)		

Site	DANDIE/ MASTIFF		
Site Position:		Northing:	0.00 usft
From:	Map	Easting:	0.00 usft
Position Uncertainty:	0.0 usft	Slot Radius:	13-3/16 "
		Latitude:	0° 0' 0.000 N
		Longitude:	109° 29' 19.478 W
		Grid Convergence:	0.00 °

Well	MASTIFF 22 FEDERAL COM 501H		
Well Position	+N/-S	0.0 usft	Northing: 11,722,186.72 usft
	+E/-W	0.0 usft	Easting: 2,118,387.97 usft
Position Uncertainty	0.0 usft	Wellhead Elevation:	usft
		Latitude:	32° 17' 1.208 N
		Longitude:	103° 27' 10.512 W
		Ground Level:	3,431.4 usft

Wellbore	MASTIFF 22 FEDERAL COM 501H				
Magnetics	Model Name	Sample Date	Declination (°)	Dip Angle (°)	Field Strength (nT)
	IGRF200510	12/31/2009	7.70	60.32	48,842.04309527

Design	PWP0				
Audit Notes:					
Version:	Phase:	PROTOTYPE		Tie On Depth:	0.0
Vertical Section:	Depth From (TVD) (usft)	+N/-S (usft)	+E/-W (usft)	Direction (°)	
	0.0	0.0	0.0	8.83	

Survey Tool Program	Date	12/19/2018			
From (usft)	To (usft)	Survey (Wellbore)	Tool Name	Description	
0.0	15,363.5	PWP0 (MASTIFF 22 FEDERAL COM 501	MWD+IFR1+MS	OWSG MWD + IFR1 + Multi-Station Correction	

Planned Survey										
Measured Depth (usft)	Inclination (°)	Azimuth (°)	Vertical Depth (usft)	+N/-S (usft)	+E/-W (usft)	Map Northing (usft)	Map Easting (usft)	Latitude	Longitude	
0.0	0.00	0.00	0.0	0.0	0.0	11,722,186.72	2,118,387.97	32° 17' 1.208 N	103° 27' 10.512 W	
100.0	0.00	0.00	100.0	0.0	0.0	11,722,186.72	2,118,387.97	32° 17' 1.208 N	103° 27' 10.512 W	
200.0	0.00	0.00	200.0	0.0	0.0	11,722,186.72	2,118,387.97	32° 17' 1.208 N	103° 27' 10.512 W	
300.0	0.00	0.00	300.0	0.0	0.0	11,722,186.72	2,118,387.97	32° 17' 1.208 N	103° 27' 10.512 W	
400.0	0.00	0.00	400.0	0.0	0.0	11,722,186.72	2,118,387.97	32° 17' 1.208 N	103° 27' 10.512 W	
500.0	0.00	0.00	500.0	0.0	0.0	11,722,186.72	2,118,387.97	32° 17' 1.208 N	103° 27' 10.512 W	
600.0	0.00	0.00	600.0	0.0	0.0	11,722,186.72	2,118,387.97	32° 17' 1.208 N	103° 27' 10.512 W	
700.0	0.00	0.00	700.0	0.0	0.0	11,722,186.72	2,118,387.97	32° 17' 1.208 N	103° 27' 10.512 W	
800.0	0.00	0.00	800.0	0.0	0.0	11,722,186.72	2,118,387.97	32° 17' 1.208 N	103° 27' 10.512 W	
900.0	0.00	0.00	900.0	0.0	0.0	11,722,186.72	2,118,387.97	32° 17' 1.208 N	103° 27' 10.512 W	
1,000.0	0.00	0.00	1,000.0	0.0	0.0	11,722,186.72	2,118,387.97	32° 17' 1.208 N	103° 27' 10.512 W	
1,100.0	0.00	0.00	1,100.0	0.0	0.0	11,722,186.72	2,118,387.97	32° 17' 1.208 N	103° 27' 10.512 W	

Company:	NEW MEXICO	Local Co-ordinate Reference:	Well MASTIFF 22 FEDERAL COM 501H
Project:	LEA	TVD Reference:	RKB=3431.4 @ 3456.4usft (HP 650)
Site:	DANDIE/ MASTIFF	MD Reference:	RKB=3431.4 @ 3456.4usft (HP 650)
Well:	MASTIFF 22 FEDERAL COM 501H	North Reference:	True
Wellbore:	MASTIFF 22 FEDERAL COM 501H	Survey Calculation Method:	Minimum Curvature
Design:	PWPO	Database:	Centennial EDM SQL Server

Planned Survey									
Measured Depth (usft)	Inclination (°)	Azimuth (°)	Vertical Depth (usft)	+N/-S (usft)	+E/-W (usft)	Map Northing (usft)	Map Easting (usft)	Latitude	Longitude
1,200.0	0.00	0.00	1,200.0	0.0	0.0	11,722,186.72	2,118,387.97	32° 17' 1.208 N	103° 27' 10.512 W
1,300.0	0.00	0.00	1,300.0	0.0	0.0	11,722,186.72	2,118,387.97	32° 17' 1.208 N	103° 27' 10.512 W
1,400.0	0.00	0.00	1,400.0	0.0	0.0	11,722,186.72	2,118,387.97	32° 17' 1.208 N	103° 27' 10.512 W
1,500.0	0.00	0.00	1,500.0	0.0	0.0	11,722,186.72	2,118,387.97	32° 17' 1.208 N	103° 27' 10.512 W
1,600.0	0.00	0.00	1,600.0	0.0	0.0	11,722,186.72	2,118,387.97	32° 17' 1.208 N	103° 27' 10.512 W
1,700.0	0.00	0.00	1,700.0	0.0	0.0	11,722,186.72	2,118,387.97	32° 17' 1.208 N	103° 27' 10.512 W
1,800.0	0.00	0.00	1,800.0	0.0	0.0	11,722,186.72	2,118,387.97	32° 17' 1.208 N	103° 27' 10.512 W
1,900.0	0.00	0.00	1,900.0	0.0	0.0	11,722,186.72	2,118,387.97	32° 17' 1.208 N	103° 27' 10.512 W
2,000.0	0.00	0.00	2,000.0	0.0	0.0	11,722,186.72	2,118,387.97	32° 17' 1.208 N	103° 27' 10.512 W
2,100.0	0.00	0.00	2,100.0	0.0	0.0	11,722,186.72	2,118,387.97	32° 17' 1.208 N	103° 27' 10.512 W
2,200.0	0.00	0.00	2,200.0	0.0	0.0	11,722,186.72	2,118,387.97	32° 17' 1.208 N	103° 27' 10.512 W
2,300.0	0.00	0.00	2,300.0	0.0	0.0	11,722,186.72	2,118,387.97	32° 17' 1.208 N	103° 27' 10.512 W
2,400.0	0.00	0.00	2,400.0	0.0	0.0	11,722,186.72	2,118,387.97	32° 17' 1.208 N	103° 27' 10.512 W
2,500.0	0.00	0.00	2,500.0	0.0	0.0	11,722,186.72	2,118,387.97	32° 17' 1.208 N	103° 27' 10.512 W
2,600.0	0.00	0.00	2,600.0	0.0	0.0	11,722,186.72	2,118,387.97	32° 17' 1.208 N	103° 27' 10.512 W
2,700.0	0.00	0.00	2,700.0	0.0	0.0	11,722,186.72	2,118,387.97	32° 17' 1.208 N	103° 27' 10.512 W
2,800.0	0.00	0.00	2,800.0	0.0	0.0	11,722,186.72	2,118,387.97	32° 17' 1.208 N	103° 27' 10.512 W
2,900.0	0.00	0.00	2,900.0	0.0	0.0	11,722,186.72	2,118,387.97	32° 17' 1.208 N	103° 27' 10.512 W
3,000.0	0.00	0.00	3,000.0	0.0	0.0	11,722,186.72	2,118,387.97	32° 17' 1.208 N	103° 27' 10.512 W
3,100.0	1.00	104.45	3,100.0	-0.2	0.8	11,722,186.52	2,118,388.82	32° 17' 1.206 N	103° 27' 10.502 W
3,200.0	2.00	104.45	3,200.0	-0.9	3.4	11,722,185.90	2,118,391.36	32° 17' 1.200 N	103° 27' 10.473 W
3,300.0	3.00	104.45	3,299.9	-2.0	7.6	11,722,184.87	2,118,395.60	32° 17' 1.189 N	103° 27' 10.423 W
3,400.0	4.00	104.45	3,399.7	-3.5	13.5	11,722,183.43	2,118,401.53	32° 17' 1.174 N	103° 27' 10.355 W
3,500.0	5.00	104.45	3,499.4	-5.4	21.1	11,722,181.59	2,118,409.16	32° 17' 1.155 N	103° 27' 10.266 W
3,600.0	6.00	104.45	3,598.9	-7.8	30.4	11,722,179.33	2,118,418.47	32° 17' 1.131 N	103° 27' 10.158 W
3,700.0	7.00	104.45	3,698.3	-10.7	41.4	11,722,176.66	2,118,429.47	32° 17' 1.103 N	103° 27' 10.030 W
3,800.0	7.00	104.45	3,797.5	-13.7	53.2	11,722,173.79	2,118,441.32	32° 17' 1.073 N	103° 27' 9.893 W
3,900.0	7.00	104.45	3,896.8	-16.7	65.0	11,722,170.92	2,118,453.16	32° 17' 1.043 N	103° 27' 9.755 W
4,000.0	7.00	104.45	3,996.0	-19.8	76.8	11,722,168.05	2,118,465.01	32° 17' 1.013 N	103° 27' 9.618 W
4,100.0	7.00	104.45	4,095.3	-22.8	88.6	11,722,165.18	2,118,476.85	32° 17' 0.983 N	103° 27' 9.480 W
4,200.0	7.00	104.45	4,194.5	-25.9	100.4	11,722,162.31	2,118,488.69	32° 17' 0.953 N	103° 27' 9.343 W
4,300.0	7.00	104.45	4,293.8	-28.9	112.2	11,722,159.44	2,118,500.54	32° 17' 0.922 N	103° 27' 9.205 W
4,400.0	7.00	104.45	4,393.0	-31.9	124.0	11,722,156.57	2,118,512.38	32° 17' 0.892 N	103° 27' 9.068 W
4,500.0	7.00	104.45	4,492.3	-35.0	135.8	11,722,153.70	2,118,524.23	32° 17' 0.862 N	103° 27' 8.930 W
4,600.0	7.00	104.45	4,591.6	-38.0	147.6	11,722,150.83	2,118,536.07	32° 17' 0.832 N	103° 27' 8.793 W
4,700.0	7.00	104.45	4,690.8	-41.1	159.4	11,722,147.96	2,118,547.91	32° 17' 0.802 N	103° 27' 8.655 W
4,800.0	7.00	104.45	4,790.1	-44.1	171.2	11,722,145.09	2,118,559.76	32° 17' 0.772 N	103° 27' 8.518 W
4,900.0	7.00	104.45	4,889.3	-47.1	183.0	11,722,142.22	2,118,571.60	32° 17' 0.742 N	103° 27' 8.380 W
5,000.0	7.00	104.45	4,988.6	-50.2	194.8	11,722,139.35	2,118,583.45	32° 17' 0.712 N	103° 27' 8.243 W
5,100.0	7.00	104.45	5,087.8	-53.2	206.6	11,722,136.48	2,118,595.29	32° 17' 0.682 N	103° 27' 8.105 W
5,200.0	7.00	104.45	5,187.1	-56.3	218.4	11,722,133.60	2,118,607.13	32° 17' 0.652 N	103° 27' 7.968 W
5,300.0	7.00	104.45	5,286.3	-59.3	230.2	11,722,130.73	2,118,618.98	32° 17' 0.621 N	103° 27' 7.830 W
5,400.0	7.00	104.45	5,385.6	-62.4	242.0	11,722,127.86	2,118,630.82	32° 17' 0.591 N	103° 27' 7.693 W
5,500.0	7.00	104.45	5,484.8	-65.4	253.8	11,722,124.99	2,118,642.67	32° 17' 0.561 N	103° 27' 7.555 W
5,600.0	7.00	104.45	5,584.1	-68.4	265.6	11,722,122.12	2,118,654.51	32° 17' 0.531 N	103° 27' 7.418 W
5,700.0	7.00	104.45	5,683.4	-71.5	277.4	11,722,119.25	2,118,666.35	32° 17' 0.501 N	103° 27' 7.280 W
5,800.0	7.00	104.45	5,782.6	-74.5	289.2	11,722,116.38	2,118,678.20	32° 17' 0.471 N	103° 27' 7.143 W
5,900.0	7.00	104.45	5,881.9	-77.6	301.0	11,722,113.51	2,118,690.04	32° 17' 0.441 N	103° 27' 7.006 W
6,000.0	7.00	104.45	5,981.1	-80.6	312.8	11,722,110.64	2,118,701.89	32° 17' 0.411 N	103° 27' 6.868 W
6,100.0	7.00	104.45	6,080.4	-83.6	324.6	11,722,107.77	2,118,713.73	32° 17' 0.381 N	103° 27' 6.731 W
6,200.0	7.00	104.45	6,179.6	-86.7	336.4	11,722,104.90	2,118,725.57	32° 17' 0.351 N	103° 27' 6.593 W
6,300.0	7.00	104.45	6,278.9	-89.7	348.2	11,722,102.03	2,118,737.42	32° 17' 0.321 N	103° 27' 6.456 W
6,400.0	7.00	104.45	6,378.1	-92.8	360.0	11,722,099.16	2,118,749.26	32° 17' 0.290 N	103° 27' 6.318 W
6,500.0	7.00	104.45	6,477.4	-95.8	371.8	11,722,096.29	2,118,761.11	32° 17' 0.260 N	103° 27' 6.181 W
6,600.0	7.00	104.45	6,576.6	-98.8	383.6	11,722,093.42	2,118,772.95	32° 17' 0.230 N	103° 27' 6.043 W

Company:	NEW MEXICO	Local Co-ordinate Reference:	Well MASTIFF 22 FEDERAL COM 501H
Project:	LEA	TVD Reference:	RKB=3431.4 @ 3456.4usft (HP 650)
Site:	DANDIE/ MASTIFF	MD Reference:	RKB=3431.4 @ 3456.4usft (HP 650)
Well:	MASTIFF 22 FEDERAL COM 501H	North Reference:	True
Wellbore:	MASTIFF 22 FEDERAL COM 501H	Survey Calculation Method:	Minimum Curvature
Design:	PWPO	Database:	Centennial EDM SQL Server

Planned Survey									
Measured Depth (usft)	Inclination (°)	Azimuth (°)	Vertical Depth (usft)	+N/-S (usft)	+E/-W (usft)	Map Northing (usft)	Map Easting (usft)	Latitude	Longitude
6,700.0	7.00	104.45	6,675.9	-101.9	395.4	11,722,090.55	2,118,784.79	32° 17' 0.200 N	103° 27' 5.906 W
6,800.0	7.00	104.45	6,775.2	-104.9	407.2	11,722,087.68	2,118,796.64	32° 17' 0.170 N	103° 27' 5.768 W
6,900.0	7.00	104.45	6,874.4	-108.0	419.0	11,722,084.81	2,118,808.48	32° 17' 0.140 N	103° 27' 5.631 W
7,000.0	7.00	104.45	6,973.7	-111.0	430.8	11,722,081.94	2,118,820.33	32° 17' 0.110 N	103° 27' 5.493 W
7,100.0	7.00	104.45	7,072.9	-114.1	442.6	11,722,079.07	2,118,832.17	32° 17' 0.080 N	103° 27' 5.356 W
7,200.0	7.00	104.45	7,172.2	-117.1	454.4	11,722,076.19	2,118,844.01	32° 17' 0.050 N	103° 27' 5.218 W
7,300.0	7.00	104.45	7,271.4	-120.1	466.2	11,722,073.32	2,118,855.86	32° 17' 0.020 N	103° 27' 5.081 W
7,400.0	7.00	104.45	7,370.7	-123.2	478.0	11,722,070.45	2,118,867.70	32° 16' 59.989 N	103° 27' 4.943 W
7,500.0	7.00	104.45	7,469.9	-126.2	489.8	11,722,067.58	2,118,879.55	32° 16' 59.959 N	103° 27' 4.806 W
7,600.0	7.00	104.45	7,569.2	-129.3	501.6	11,722,064.71	2,118,891.39	32° 16' 59.929 N	103° 27' 4.668 W
7,700.0	7.00	104.45	7,668.4	-132.3	513.4	11,722,061.84	2,118,903.24	32° 16' 59.899 N	103° 27' 4.531 W
7,800.0	7.00	104.45	7,767.7	-135.3	525.2	11,722,058.97	2,118,915.08	32° 16' 59.869 N	103° 27' 4.393 W
7,900.0	7.00	104.45	7,867.0	-138.4	537.0	11,722,056.10	2,118,926.92	32° 16' 59.839 N	103° 27' 4.256 W
8,000.0	7.00	104.45	7,966.2	-141.4	548.8	11,722,053.23	2,118,938.77	32° 16' 59.809 N	103° 27' 4.118 W
8,100.0	7.00	104.45	8,065.5	-144.5	560.6	11,722,050.36	2,118,950.61	32° 16' 59.779 N	103° 27' 3.981 W
8,200.0	7.00	104.45	8,164.7	-147.5	572.4	11,722,047.49	2,118,962.46	32° 16' 59.749 N	103° 27' 3.843 W
8,300.0	7.00	104.45	8,264.0	-150.5	584.2	11,722,044.62	2,118,974.30	32° 16' 59.719 N	103° 27' 3.706 W
8,400.0	7.00	104.45	8,363.2	-153.6	596.0	11,722,041.75	2,118,986.14	32° 16' 59.688 N	103° 27' 3.568 W
8,500.0	7.00	104.45	8,462.5	-156.6	607.8	11,722,038.88	2,118,997.99	32° 16' 59.658 N	103° 27' 3.431 W
8,600.0	7.00	104.45	8,561.7	-159.7	619.6	11,722,036.01	2,119,009.83	32° 16' 59.628 N	103° 27' 3.293 W
8,700.0	7.00	104.45	8,661.0	-162.7	631.4	11,722,033.14	2,119,021.68	32° 16' 59.598 N	103° 27' 3.156 W
8,800.0	7.00	104.45	8,760.2	-165.8	643.2	11,722,030.27	2,119,033.52	32° 16' 59.568 N	103° 27' 3.018 W
8,900.0	7.00	104.45	8,859.5	-168.8	655.0	11,722,027.40	2,119,045.36	32° 16' 59.538 N	103° 27' 2.881 W
9,000.0	7.00	104.45	8,958.8	-171.8	666.8	11,722,024.53	2,119,057.21	32° 16' 59.508 N	103° 27' 2.744 W
9,100.0	7.00	104.45	9,058.0	-174.9	678.6	11,722,021.65	2,119,069.05	32° 16' 59.478 N	103° 27' 2.606 W
9,200.0	6.00	104.45	9,157.4	-177.7	689.6	11,722,018.99	2,119,080.05	32° 16' 59.450 N	103° 27' 2.478 W
9,300.0	5.00	104.45	9,256.9	-180.1	698.9	11,722,016.73	2,119,089.37	32° 16' 59.426 N	103° 27' 2.370 W
9,400.0	4.00	104.45	9,356.6	-182.0	706.5	11,722,014.88	2,119,096.99	32° 16' 59.407 N	103° 27' 2.282 W
9,500.0	3.00	104.45	9,456.4	-183.6	712.4	11,722,013.45	2,119,102.93	32° 16' 59.392 N	103° 27' 2.213 W
9,600.0	2.00	104.45	9,556.3	-184.7	716.6	11,722,012.42	2,119,107.17	32° 16' 59.381 N	103° 27' 2.164 W
9,700.0	1.00	104.45	9,656.3	-185.3	719.1	11,722,011.80	2,119,109.71	32° 16' 59.374 N	103° 27' 2.134 W
9,800.0	0.00	0.00	9,756.3	-185.5	720.0	11,722,011.60	2,119,110.56	32° 16' 59.372 N	103° 27' 2.124 W
9,900.0	0.00	0.00	9,856.3	-185.5	720.0	11,722,011.60	2,119,110.56	32° 16' 59.372 N	103° 27' 2.124 W
9,970.5	0.00	0.00	9,926.8	-185.5	720.0	11,722,011.60	2,119,110.56	32° 16' 59.372 N	103° 27' 2.124 W
10,000.0	2.95	0.79	9,956.3	-184.8	720.0	11,722,012.35	2,119,110.56	32° 16' 59.380 N	103° 27' 2.124 W
10,100.0	12.94	0.79	10,055.2	-171.0	720.2	11,722,026.16	2,119,110.55	32° 16' 59.516 N	103° 27' 2.122 W
10,200.0	22.94	0.79	10,150.2	-140.2	720.6	11,722,056.93	2,119,110.53	32° 16' 59.821 N	103° 27' 2.117 W
10,300.0	32.93	0.79	10,238.4	-93.4	721.3	11,722,103.72	2,119,110.50	32° 17' 0.284 N	103° 27' 2.109 W
10,400.0	42.93	0.79	10,317.2	-32.0	722.1	11,722,165.11	2,119,110.46	32° 17' 0.891 N	103° 27' 2.100 W
10,500.0	52.92	0.79	10,384.1	42.1	723.1	11,722,239.25	2,119,110.41	32° 17' 1.625 N	103° 27' 2.088 W
10,600.0	62.92	0.79	10,437.2	126.7	724.3	11,722,323.87	2,119,110.36	32° 17' 2.462 N	103° 27' 2.074 W
10,700.0	72.92	0.79	10,474.7	219.3	725.6	11,722,416.42	2,119,110.30	32° 17' 3.378 N	103° 27' 2.059 W
10,800.0	82.91	0.79	10,495.6	316.9	726.9	11,722,514.08	2,119,110.24	32° 17' 4.345 N	103° 27' 2.043 W
10,870.9	90.00	0.79	10,500.0	387.6	727.9	11,722,584.83	2,119,110.19	32° 17' 5.045 N	103° 27' 2.032 W
10,900.0	90.00	0.78	10,500.0	416.7	728.3	11,722,613.90	2,119,110.17	32° 17' 5.332 N	103° 27' 2.027 W
11,000.0	90.00	0.76	10,500.0	516.7	729.6	11,722,713.90	2,119,110.08	32° 17' 6.322 N	103° 27' 2.012 W
11,100.0	90.00	0.74	10,500.0	616.7	730.9	11,722,813.90	2,119,109.94	32° 17' 7.311 N	103° 27' 1.996 W
11,200.0	90.00	0.71	10,500.0	716.7	732.2	11,722,913.90	2,119,109.76	32° 17' 8.301 N	103° 27' 1.982 W
11,300.0	90.00	0.69	10,500.0	816.7	733.4	11,723,013.90	2,119,109.54	32° 17' 9.291 N	103° 27' 1.967 W
11,400.0	90.00	0.67	10,500.0	916.7	734.6	11,723,113.90	2,119,109.28	32° 17' 10.280 N	103° 27' 1.954 W
11,500.0	90.00	0.64	10,500.0	1,016.7	735.8	11,723,213.90	2,119,108.98	32° 17' 11.270 N	103° 27' 1.940 W
11,600.0	90.00	0.62	10,500.0	1,116.7	736.9	11,723,313.90	2,119,108.64	32° 17' 12.259 N	103° 27' 1.927 W
11,700.0	90.00	0.59	10,500.0	1,216.7	737.9	11,723,413.89	2,119,108.25	32° 17' 13.249 N	103° 27' 1.915 W
11,800.0	90.00	0.57	10,500.0	1,316.6	738.9	11,723,513.89	2,119,107.83	32° 17' 14.239 N	103° 27' 1.903 W
11,900.0	90.00	0.55	10,500.0	1,416.6	739.9	11,723,613.89	2,119,107.36	32° 17' 15.228 N	103° 27' 1.892 W


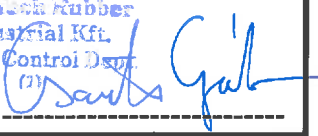
Company:	NEW MEXICO	Local Co-ordinate Reference:	Well MASTIFF 22 FEDERAL COM 501H
Project:	LEA	TVD Reference:	RKB=3431.4 @ 3456.4usft (HP 650)
Site:	DANDIE/ MASTIFF	MD Reference:	RKB=3431.4 @ 3456.4usft (HP 650)
Well:	MASTIFF 22 FEDERAL COM 501H	North Reference:	True
Wellbore:	MASTIFF 22 FEDERAL COM 501H	Survey Calculation Method:	Minimum Curvature
Design:	PWPO	Database:	Centennial EDM SQL Server

Planned Survey									
Measured Depth (usft)	Inclination (°)	Azimuth (°)	Vertical Depth (usft)	+N/-S (usft)	+E/-W (usft)	Map Northing (usft)	Map Easting (usft)	Latitude	Longitude
12,000.0	90.00	0.52	10,500.0	1,516.6	740.8	11,723,713.89	2,119,106.85	32° 17' 16.218 N	103° 27' 1.881 W
12,100.0	90.00	0.50	10,500.0	1,616.6	741.7	11,723,813.89	2,119,106.31	32° 17' 17.207 N	103° 27' 1.870 W
12,200.0	90.00	0.48	10,500.0	1,716.6	742.6	11,723,913.89	2,119,105.72	32° 17' 18.197 N	103° 27' 1.860 W
12,300.0	90.00	0.45	10,500.0	1,816.6	743.4	11,724,013.89	2,119,105.09	32° 17' 19.187 N	103° 27' 1.851 W
12,400.0	90.00	0.43	10,500.0	1,916.6	744.2	11,724,113.88	2,119,104.41	32° 17' 20.176 N	103° 27' 1.842 W
12,500.0	90.00	0.41	10,500.0	2,016.6	744.9	11,724,213.88	2,119,103.70	32° 17' 21.166 N	103° 27' 1.833 W
12,600.0	90.00	0.38	10,500.0	2,116.6	745.6	11,724,313.88	2,119,102.95	32° 17' 22.155 N	103° 27' 1.825 W
12,700.0	90.00	0.36	10,500.0	2,216.6	746.2	11,724,413.88	2,119,102.15	32° 17' 23.145 N	103° 27' 1.818 W
12,800.0	90.00	0.34	10,500.0	2,316.6	746.8	11,724,513.87	2,119,101.32	32° 17' 24.135 N	103° 27' 1.811 W
12,900.0	90.00	0.31	10,500.0	2,416.6	747.4	11,724,613.87	2,119,100.44	32° 17' 25.124 N	103° 27' 1.804 W
13,000.0	90.00	0.29	10,500.0	2,516.6	747.9	11,724,713.86	2,119,099.52	32° 17' 26.114 N	103° 27' 1.798 W
13,100.0	90.00	0.27	10,500.0	2,616.6	748.4	11,724,813.86	2,119,098.56	32° 17' 27.104 N	103° 27' 1.792 W
13,183.3	90.00	0.25	10,500.0	2,699.9	748.8	11,724,897.11	2,119,097.73	32° 17' 27.927 N	103° 27' 1.788 W
13,200.0	90.00	0.25	10,500.0	2,716.6	748.9	11,724,913.85	2,119,097.56	32° 17' 28.093 N	103° 27' 1.787 W
13,300.0	90.00	0.25	10,500.0	2,816.6	749.3	11,725,013.85	2,119,096.55	32° 17' 29.083 N	103° 27' 1.782 W
13,400.0	90.00	0.25	10,500.0	2,916.6	749.7	11,725,113.84	2,119,095.54	32° 17' 30.072 N	103° 27' 1.777 W
13,500.0	90.00	0.25	10,500.0	3,016.6	750.1	11,725,213.84	2,119,094.52	32° 17' 31.062 N	103° 27' 1.772 W
13,600.0	90.00	0.25	10,500.0	3,116.6	750.6	11,725,313.83	2,119,093.51	32° 17' 32.052 N	103° 27' 1.767 W
13,700.0	90.00	0.25	10,500.0	3,216.6	751.0	11,725,413.83	2,119,092.49	32° 17' 33.041 N	103° 27' 1.762 W
13,800.0	90.00	0.25	10,500.0	3,316.6	751.4	11,725,513.82	2,119,091.48	32° 17' 34.031 N	103° 27' 1.757 W
13,900.0	90.00	0.25	10,500.0	3,416.6	751.9	11,725,613.82	2,119,090.47	32° 17' 35.021 N	103° 27' 1.752 W
14,000.0	90.00	0.25	10,500.0	3,516.6	752.3	11,725,713.81	2,119,089.45	32° 17' 36.010 N	103° 27' 1.747 W
14,100.0	90.00	0.25	10,500.0	3,616.6	752.7	11,725,813.81	2,119,088.44	32° 17' 37.000 N	103° 27' 1.742 W
14,200.0	90.00	0.25	10,500.0	3,716.6	753.1	11,725,913.80	2,119,087.42	32° 17' 37.989 N	103° 27' 1.737 W
14,300.0	90.00	0.25	10,500.0	3,816.6	753.6	11,726,013.80	2,119,086.41	32° 17' 38.979 N	103° 27' 1.732 W
14,400.0	90.00	0.25	10,500.0	3,916.6	754.0	11,726,113.79	2,119,085.40	32° 17' 39.969 N	103° 27' 1.727 W
14,500.0	90.00	0.25	10,500.0	4,016.6	754.4	11,726,213.79	2,119,084.38	32° 17' 40.958 N	103° 27' 1.722 W
14,600.0	90.00	0.25	10,500.0	4,116.6	754.9	11,726,313.78	2,119,083.37	32° 17' 41.948 N	103° 27' 1.717 W
14,700.0	90.00	0.25	10,500.0	4,216.6	755.3	11,726,413.78	2,119,082.35	32° 17' 42.938 N	103° 27' 1.712 W
14,800.0	90.00	0.25	10,500.0	4,316.6	755.7	11,726,513.77	2,119,081.34	32° 17' 43.927 N	103° 27' 1.707 W
14,900.0	90.00	0.25	10,500.0	4,416.6	756.1	11,726,613.77	2,119,080.33	32° 17' 44.917 N	103° 27' 1.702 W
15,000.0	90.00	0.25	10,500.0	4,516.6	756.6	11,726,713.76	2,119,079.31	32° 17' 45.907 N	103° 27' 1.697 W
15,100.0	90.00	0.25	10,500.0	4,616.6	757.0	11,726,813.76	2,119,078.30	32° 17' 46.896 N	103° 27' 1.692 W
15,200.0	90.00	0.25	10,500.0	4,716.6	757.4	11,726,913.75	2,119,077.29	32° 17' 47.886 N	103° 27' 1.687 W
15,300.0	90.00	0.25	10,500.0	4,816.6	757.9	11,727,013.75	2,119,076.27	32° 17' 48.875 N	103° 27' 1.682 W
15,363.5	90.00	0.25	10,500.0	4,880.1	758.1	11,727,077.28	2,119,075.63	32° 17' 49.504 N	103° 27' 1.678 W

Design Targets									
Target Name	Dip Angle (°)	Dip Dir. (°)	TVD (usft)	+N/-S (usft)	+E/-W (usft)	Northing (usft)	Easting (usft)	Latitude	Longitude
FTP - MASTIFF 22 FED - hit/miss target - Shape	0.00	0.00	10,500.0	-200.3	759.1	11,721,997.43	2,119,149.84	32° 16' 59.227 N	103° 27' 1.669 W
- plan misses target center by 251.2usft at 10400.0usft MD (10317.2 TVD, -32.0 N, 722.1 E) - Circle (radius 50.0)									
LTP/BHL - MASTIFF 22 - plan hits target center - Point	0.00	0.00	10,500.0	4,880.1	758.1	11,727,077.28	2,119,075.63	32° 17' 49.504 N	103° 27' 1.678 W
Interp @ 10500.0 (MAS) - plan hits target center - Point	0.00	0.00	10,500.0	387.6	727.9	11,722,584.83	2,119,110.19	32° 17' 5.045 N	103° 27' 2.032 W

Company:	NEW MEXICO	Local Co-ordinate Reference:	Well MASTIFF 22 FEDERAL COM 501H
Project:	LEA	TVD Reference:	RKB=3431.4 @ 3456.4usft (HP 650)
Site:	DANDIE/ MASTIFF	MD Reference:	RKB=3431.4 @ 3456.4usft (HP 650)
Well:	MASTIFF 22 FEDERAL COM 501H	North Reference:	True
Wellbore:	MASTIFF 22 FEDERAL COM 501H	Survey Calculation Method:	Minimum Curvature
Design:	PWP0	Database:	Centennial EDM SQL Server

Checked By: _____	Approved By: _____	Date: _____
-------------------	--------------------	-------------

QUALITY CONTROL INSPECTION AND TEST CERTIFICATE				CERT. N°: 504	
PURCHASER: ContiTech Oil & Marine Corp.			P.O. N°: 4500409659		
CONTITECH RUBBER order N°: 538236		HOSE TYPE: 3" ID		Choke and Kill Hose	
HOSE SERIAL N°: 67255		NOMINAL / ACTUAL LENGTH: 10,67 m / 10,77 m			
W.P. 68,9 MPa 10000 psi		T.P. 103,4 MPa 15000 psi		Duration: 60 min.	
<p>Pressure test with water at ambient temperature</p> <p style="text-align: center;">See attachment. (1 page)</p> <p>↑ 10 mm = 10 Min. → 10 mm = 20 MPa</p>					
COUPLINGS Type		Serial N°		Quality	
3" coupling with		9251 9254		AISI 4130	
4 1/16" 10K API b.w. Flange end				AISI 4130	
				Heat N°	
				A0579N	
				035608	
Not Designed For Well Testing				API Spec 16 C	
				Temperature rate:"B"	
All metal parts are flawless					
WE CERTIFY THAT THE ABOVE HOSE HAS BEEN MANUFACTURED IN ACCORDANCE WITH THE TERMS OF THE ORDER INSPECTED AND PRESSURE TESTED AS ABOVE WITH SATISFACTORY RESULT.					
STATEMENT OF CONFORMITY: We hereby certify that the above items/equipment supplied by us are in conformity with the terms, conditions and specifications of the above Purchaser Order and that these items/equipment were fabricated inspected and tested in accordance with the referenced standards, codes and specifications and meet the relevant acceptance criteria and design requirements.					
COUNTRY OF ORIGIN HUNGARY/EU					
Date:		Inspector		Quality Control	
20. March 2014.				 	

Belang
Control Rubber
Industrial Kft.
Quality Control Dept.

GN	+21.22	°C	01:20	
RD	+21.35	°C	01:20	
BL	+1053.	bar	01:20	
GN	+21.15	°C	01:10	
RD	+21.31	°C	01:10	
BL	+1055.	bar	01:10	
GN	+21.18	°C	01:00	
RD	+21.30	°C	01:00	
BL	+1056.	bar	01:00	
GN	+21.26	°C	00:50	16m-a-10.5 22309
RD	+21.33	°C	00:50	
BL	+1057.	bar	00:50	
GN	+21.28	°C	00:40	
RD	+21.34	°C	00:40	
BL	+1059.	bar	00:40	
GN	+21.38	°C	00:30	
RD	+21.42	°C	00:30	
BL	+1061.	bar	00:30	
GN	+21.35	°C	00:20	
RD	+21.39	°C	00:20	
BL	+1064.	bar	00:20	

0102030405060708090100

19.03.2014. 23:50
67252, 67255, 67256 23:50

Hose Data Sheet

CRI Order No.	538236
Customer	ContiTech Oil & Marine Corp.
Customer Order No	4500409659
Item No.	1
Hose Type	Flexible Hose
Standard	API SPEC 16 C
Inside dia in inches	3
Length	35 ft
Type of coupling one end	FLANGE 4.1/16" 10K API SPEC 6A TYPE 6BX FLANGE C/W BX155 R.GR.SOUR
Type of coupling other end	FLANGE 4.1/16" 10K API SPEC 6A TYPE 6BX FLANGE C/W BX155 R.GR.SOUR
H2S service NACE MR0175	Yes
Working Pressure	10 000 psi
Design Pressure	10 000 psi
Test Pressure	15 000 psi
Safety Factor	2,25
Marking	USUAL PHOENIX
Cover	NOT FIRE RESISTANT
Outside protection	St.steel outer wrap
Internal stripwound tube	No
Lining	OIL + GAS RESISTANT SOUR
Safety clamp	No
Lifting collar	No
Element C	No
Safety chain	No
Safety wire rope	No
Max.design temperature [°C]	100
Min.design temperature [°C]	-20
Min. Bend Radius operating [m]	0,90
Min. Bend Radius storage [m]	0,90
Electrical continuity	The Hose is electrically continuous
Type of packing	WOODEN CRATE ISPM-15

APD ID: 10400038195

Submission Date: 01/17/2019

Highlighted data
reflects the most
recent changes

Operator Name: CENTENNIAL RESOURCE PRODUCTION LLC

Well Name: MASTIFF 22 FEDERAL COM

Well Number: 501H

[Show Final Text](#)

Well Type: OIL WELL

Well Work Type: Drill

Section 1 - Existing Roads

Will existing roads be used? YES

Existing Road Map:

MASTIFF_22_FEDERAL_COM_Road_Maps_20190117145958.pdf

Existing Road Purpose: ACCESS,FLUID TRANSPORT

Row(s) Exist? YES

ROW ID(s)

ID:

Do the existing roads need to be improved? NO

Existing Road Improvement Description:

Existing Road Improvement Attachment:

Section 2 - New or Reconstructed Access Roads

Will new roads be needed? YES

New Road Map:

MASTIFF_22_FEDERAL_COM_New_Roads_Map_20190117150022.pdf

New road type: RESOURCE

Length: 514.2 Feet

Width (ft.): 65

Max slope (%): 2

Max grade (%): 4

Army Corp of Engineers (ACOE) permit required? NO

ACOE Permit Number(s):

New road travel width: 33

New road access erosion control: Drainage and erosion will be constantly monitored to prevent compromising the road integrity and to protect the surrounding native topography.

New road access plan or profile prepared? NO

New road access plan attachment:

Access road engineering design? NO

Access road engineering design attachment:

Operator Name: CENTENNIAL RESOURCE PRODUCTION LLC

Well Name: MASTIFF 22 FEDERAL COM

Well Number: 501H

Turnout? N

Access surfacing type: OTHER

Access topsoil source: ONSITE

Access surfacing type description: Caliche

Access onsite topsoil source depth: 4

Offsite topsoil source description:

Onsite topsoil removal process: Equipment will be used to strip 4 inches in depth and stockpile, utilizing berms for run-off

Access other construction information:

Access miscellaneous information:

Number of access turnouts:

Access turnout map:

Drainage Control

New road drainage crossing: OTHER

Drainage Control comments: Ditches will be utilized for drainage

Road Drainage Control Structures (DCS) description:

Road Drainage Control Structures (DCS) attachment:

TYPICAL_ACCESS_CROSS_SECTIONS_20190117140916.pdf

Access Additional Attachments

Section 3 - Location of Existing Wells

Existing Wells Map? YES

Attach Well map:

Dandie_Mastif_Existing_wells_20190117150101.xlsx

MASTIFF_22_FEDERAL_COM_EXISTING_WELLS_20190117150102.pdf

Section 4 - Location of Existing and/or Proposed Production Facilities

Submit or defer a Proposed Production Facilities plan? SUBMIT

Production Facilities description: Handles/Separates Gas, Oil, and Water Facility is located on the South of the pad 565' x 100'

Production Facilities map:

Dandie_Mastiff_Comingle_FAC_FED_Layout_20190717065523.pdf

MASTIFF_22_FEDERAL_COM_501H___Location_Layout_REV_10_26_2018_20190830074458.pdf

Section 5 - Location and Types of Water Supply

Water Source Table

Operator Name: CENTENNIAL RESOURCE PRODUCTION LLC

Well Name: MASTIFF 22 FEDERAL COM

Well Number: 501H

Water source type: OTHER

Describe type: East Gramma Ridge Pit: located in SWSW Sec 24,
T22S, R34E

Water source use type: SURFACE CASING
STIMULATION
DUST CONTROL

Source latitude:

Source longitude:

Source datum:

Water source permit type: PRIVATE CONTRACT

Water source transport method: PIPELINE

Source land ownership: PRIVATE

Source transportation land ownership: STATE

Water source volume (barrels): 350000

Source volume (acre-feet): 45.112583

Source volume (gal): 14700000

Water source and transportation map:

Dandie_Mastiff_water_transfer_route_20190117150143.pdf

Water source comments: Temporary surface lines will be used to transport water for drilling and completion operations from the East Gramma Ridge Pit to the Dandie/Mastiff pad.

New water well? NO

New Water Well Info

Well latitude:

Well Longitude:

Well datum:

Well target aquifer:

Est. depth to top of aquifer(ft):

Est thickness of aquifer:

Aquifer comments:

Aquifer documentation:

Well depth (ft):

Well casing type:

Well casing outside diameter (in.):

Well casing inside diameter (in.):

New water well casing?

Used casing source:

Drilling method:

Drill material:

Grout material:

Grout depth:

Casing length (ft.):

Casing top depth (ft.):

Operator Name: CENTENNIAL RESOURCE PRODUCTION LLC

Well Name: MASTIFF 22 FEDERAL COM

Well Number: 501H

Well Production type:

Completion Method:

Water well additional information:

State appropriation permit:

Additional information attachment:

Section 6 - Construction Materials

Using any construction materials: YES

Construction Materials description: Caliche will be hauled from the existing Limestone pit located in {NE4 NE4, Sec 21, T23S, R34E}. Pit has been identified for use in the attached exhibit. Any native caliche on the proposed site can be used by "flipping" the location and using all native soils.

Construction Materials source location attachment:

Dandie_Mastiff_caliche_route_20190117150215.pdf

Section 7 - Methods for Handling Waste

Waste type: DRILLING

Waste content description: Brine water based drilling fluid

Amount of waste: 1500 barrels

Waste disposal frequency : Monthly

Safe containment description: Steel tanks with plastic-lined containment berms

Safe containmant attachment:

Waste disposal type: HAUL TO COMMERCIAL FACILITY **Disposal location ownership:** COMMERCIAL

Disposal type description:

Disposal location description: Haul to a commercial facility

Waste type: DRILLING

Waste content description: Fresh water based drilling fluid.

Amount of waste: 1500 barrels

Waste disposal frequency : Weekly

Safe containment description: Steel tanks with plastic-lined containment berms.

Safe containmant attachment:

Waste disposal type: HAUL TO COMMERCIAL FACILITY **Disposal location ownership:** COMMERCIAL

Disposal type description:

Disposal location description: Commercial facility

Operator Name: CENTENNIAL RESOURCE PRODUCTION LLC

Well Name: MASTIFF 22 FEDERAL COM

Well Number: 501H

Waste type: SEWAGE

Waste content description: Grey water/Human waste

Amount of waste: 5000 gallons

Waste disposal frequency : Weekly

Safe containment description: Approved waste storage tanks with containment.

Safe containmant attachment:

Waste disposal type: HAUL TO COMMERCIAL FACILITY **Disposal location ownership:** COMMERCIAL

Disposal type description:

Disposal location description: Commercial

Waste type: GARBAGE

Waste content description: General trash/garbage

Amount of waste: 5000 pounds

Waste disposal frequency : Weekly

Safe containment description: Enclosed trash trailer

Safe containmant attachment:

Waste disposal type: HAUL TO COMMERCIAL FACILITY **Disposal location ownership:** COMMERCIAL

Disposal type description:

Disposal location description: Haul to a commercial facility

Waste type: PRODUCED WATER

Waste content description: Produced water from the wellbore.

Amount of waste: 210000 gallons

Waste disposal frequency : Daily

Safe containment description: Containment built around the tanks, inside lined.

Safe containmant attachment:

Waste disposal type: OFF-LEASE INJECTION **Disposal location ownership:** COMMERCIAL

Disposal type description:

Disposal location description: Haul to commercial facility

Reserve Pit

Reserve Pit being used? NO

Temporary disposal of produced water into reserve pit?

Operator Name: CENTENNIAL RESOURCE PRODUCTION LLC

Well Name: MASTIFF 22 FEDERAL COM

Well Number: 501H

Reserve pit length (ft.)

Reserve pit width (ft.)

Reserve pit depth (ft.)

Reserve pit volume (cu. yd.)

Is at least 50% of the reserve pit in cut?

Reserve pit liner

Reserve pit liner specifications and installation description

Cuttings Area

Cuttings Area being used? NO

Are you storing cuttings on location? YES

Description of cuttings location Cuttings will be stored on site in steel tanks and hauled to an appropriate commercial facility when drilling operations are complete.

Cuttings area length (ft.)

Cuttings area width (ft.)

Cuttings area depth (ft.)

Cuttings area volume (cu. yd.)

Is at least 50% of the cuttings area in cut?

WCuttings area liner

Cuttings area liner specifications and installation description

Section 8 - Ancillary Facilities

Are you requesting any Ancillary Facilities?: NO

Ancillary Facilities attachment:

Comments:

Section 9 - Well Site Layout

Well Site Layout Diagram:

MASTIFF_22_FEDERAL_COM_WELL_SITE_LAYOUT_20190117150244.pdf

Leasehold_and_location_map___20190117150256.pdf

Comments:

Operator Name: CENTENNIAL RESOURCE PRODUCTION LLC

Well Name: MASTIFF 22 FEDERAL COM

Well Number: 501H

Section 10 - Plans for Surface Reclamation

Type of disturbance: New Surface Disturbance

Multiple Well Pad Name: DANDIE/MASTIFF 22 FEDERAL COM

Multiple Well Pad Number: 6

Recontouring attachment:

MASTIFF_22_FEDERAL_COM_IR_MAP_20190117150324.pdf

Drainage/Erosion control construction: Drainage and erosion will be constantly monitored to prevent compromising the well site integrity, and to protect the surrounding native topography.

Drainage/Erosion control reclamation: Upon reclamation, well site will be returned to its native contour. Water breaks will be added if needed, to prevent unnatural erosion and loss of vegetation.

Well pad proposed disturbance (acres): 8.859

Well pad interim reclamation (acres): 3.989

Well pad long term disturbance (acres): 4.87

Road proposed disturbance (acres): 0.767

Road interim reclamation (acres): 0.47

Road long term disturbance (acres): 0.297

Powerline proposed disturbance (acres): 0

Powerline interim reclamation (acres): 0

Powerline long term disturbance (acres): 0

Pipeline proposed disturbance (acres): 0

Pipeline interim reclamation (acres): 0

Pipeline long term disturbance (acres): 0

Other proposed disturbance (acres): 0

Other interim reclamation (acres): 0

Other long term disturbance (acres): 0

Total proposed disturbance: 9.626

Total interim reclamation: 4.459

Total long term disturbance: 5.167

Disturbance Comments: During the onsite, Centennial was approved to build this pad in phases. The third phase includes the Donkey Kong wells 301H, 302H and 303H.

Reconstruction method: Come back in with heavy equipment, remove caliche in the reclamation area, and replace with native topsoil. Reconstruction of pad will occur once all wells on location have been drilled and completed.

Topsoil redistribution: Surface disturbance will be limited to well site surveyed dimensions. Topsoil will be stored along the west edge of the pad site.

Soil treatment: Native caliche will be used in the initial construction of the well pad. Pad will be compacted using fresh water, dust control measures will be implemented as needed.

Existing Vegetation at the well pad:

Existing Vegetation at the well pad attachment:

Existing Vegetation Community at the road:

Existing Vegetation Community at the road attachment:

Existing Vegetation Community at the pipeline:

Existing Vegetation Community at the pipeline attachment:

Existing Vegetation Community at other disturbances:

Existing Vegetation Community at other disturbances attachment:

Non native seed used? NO

Operator Name: CENTENNIAL RESOURCE PRODUCTION LLC

Well Name: MASTIFF 22 FEDERAL COM

Well Number: 501H

Non native seed description:

Seedling transplant description:

Will seedlings be transplanted for this project? NO

Seedling transplant description attachment:

Will seed be harvested for use in site reclamation? NO

Seed harvest description:

Seed harvest description attachment:

Seed Management

Seed Table

Seed Summary

Total pounds/Acre:

Seed Type	Pounds/Acre
-----------	-------------

Seed reclamation attachment:

Operator Contact/Responsible Official Contact Info

First Name:

Last Name:

Phone: (432)315-0119

Email: Coral.Richline@cdevinc.com

Seedbed prep: Prepare a 3-5 inch deep seedbed, with the top 3-4 inches consisting of topsoil.

Seed BMP: Seeding will be done in the proper season, and monitored for the re-establishment of native vegetation.

Seed method: Broadcast

Existing invasive species? NO

Existing invasive species treatment description:

Existing invasive species treatment attachment:

Weed treatment plan description: Spray for noxious weeds and bare ground as needed.

Weed treatment plan attachment:

Monitoring plan description: All disturbed areas will be closely monitored for any primary or secondary noxious weeds. Should any be found, chemical spraying in accordance with state regulations will be implemented.

Monitoring plan attachment:

Success standards: No primary or secondary noxious weed will be allowed. Vegetation will be returned to its native standard.

Pit closure description: No open pits will be constructed.

Pit closure attachment:

Operator Name: CENTENNIAL RESOURCE PRODUCTION LLC

Well Name: MASTIFF 22 FEDERAL COM

Well Number: 501H

Section 11 - Surface Ownership

Disturbance type: WELL PAD

Describe:

Surface Owner: BUREAU OF LAND MANAGEMENT

Other surface owner description:

BIA Local Office:

BOR Local Office:

COE Local Office:

DOD Local Office:

NPS Local Office:

State Local Office:

Military Local Office:

USFWS Local Office:

Other Local Office:

USFS Region:

USFS Forest/Grassland:

USFS Ranger District:

Disturbance type: EXISTING ACCESS ROAD

Describe:

Surface Owner: BUREAU OF LAND MANAGEMENT

Other surface owner description:

BIA Local Office:

BOR Local Office:

COE Local Office:

DOD Local Office:

NPS Local Office:

State Local Office:

Military Local Office:

Operator Name: CENTENNIAL RESOURCE PRODUCTION LLC

Well Name: MASTIFF 22 FEDERAL COM

Well Number: 501H

USFWS Local Office:

Other Local Office:

USFS Region:

USFS Forest/Grassland:

USFS Ranger District:

Disturbance type: PIPELINE

Describe:

Surface Owner: BUREAU OF LAND MANAGEMENT

Other surface owner description:

BIA Local Office:

BOR Local Office:

COE Local Office:

DOD Local Office:

NPS Local Office:

State Local Office:

Military Local Office:

USFWS Local Office:

Other Local Office:

USFS Region:

USFS Forest/Grassland:

USFS Ranger District:

Disturbance type: OTHER

Describe: Power Line

Surface Owner: BUREAU OF LAND MANAGEMENT

Other surface owner description:

BIA Local Office:

BOR Local Office:

COE Local Office:

DOD Local Office:

Operator Name: CENTENNIAL RESOURCE PRODUCTION LLC

Well Name: MASTIFF 22 FEDERAL COM

Well Number: 501H

NPS Local Office:

State Local Office:

Military Local Office:

USFWS Local Office:

Other Local Office:

USFS Region:

USFS Forest/Grassland:

USFS Ranger District:

Section 12 - Other Information

Right of Way needed? NO

Use APD as ROW?

ROW Type(s):

ROW Applications

SUPO Additional Information:

Use a previously conducted onsite? YES

Previous Onsite information: Onsite conducted with Paul Murphy 10/18/2018

Other SUPO Attachment

MASTIFF_22_FEDERAL_COM_ARCH_MAP_20190117150406.pdf

Dandie_22_Federal_Com_503H_SUPO_Revision_ke_20190830085459.pdf



APD ID: 10400038195

Submission Date: 01/17/2019

Operator Name: CENTENNIAL RESOURCE PRODUCTION LLC

Well Name: MASTIFF 22 FEDERAL COM

Well Number: 501H

Well Type: OIL WELL

Well Work Type: Drill

Section 1 - General

Would you like to address long-term produced water disposal? NO

Section 2 - Lined Pits

Would you like to utilize Lined Pit PWD options? NO

Produced Water Disposal (PWD) Location:

PWD surface owner:

PWD disturbance (acres):

Lined pit PWD on or off channel:

Lined pit PWD discharge volume (bbl/day):

Lined pit specifications:

Pit liner description:

Pit liner manufacturers information:

Precipitated solids disposal:

Describe precipitated solids disposal:

Precipitated solids disposal permit:

Lined pit precipitated solids disposal schedule:

Lined pit precipitated solids disposal schedule attachment:

Lined pit reclamation description:

Lined pit reclamation attachment:

Leak detection system description:

Leak detection system attachment:

Operator Name: CENTENNIAL RESOURCE PRODUCTION LLC

Well Name: MASTIFF 22 FEDERAL COM

Well Number: 501H

Lined pit Monitor description:

Lined pit Monitor attachment:

Lined pit: do you have a reclamation bond for the pit?

Is the reclamation bond a rider under the BLM bond?

Lined pit bond number:

Lined pit bond amount:

Additional bond information attachment:

Section 3 - Unlined Pits

Would you like to utilize Unlined Pit PWD options? NO

Produced Water Disposal (PWD) Location:

PWD disturbance (acres):

PWD surface owner:

Unlined pit PWD on or off channel:

Unlined pit PWD discharge volume (bbl/day):

Unlined pit specifications:

Precipitated solids disposal:

Describe precipitated solids disposal:

Precipitated solids disposal permit:

Unlined pit precipitated solids disposal schedule:

Unlined pit precipitated solids disposal schedule attachment:

Unlined pit reclamation description:

Unlined pit reclamation attachment:

Unlined pit Monitor description:

Unlined pit Monitor attachment:

Do you propose to put the produced water to beneficial use?

Beneficial use user confirmation:

Estimated depth of the shallowest aquifer (feet):

Does the produced water have an annual average Total Dissolved Solids (TDS) concentration equal to or less than that of the existing water to be protected?

TDS lab results:

Geologic and hydrologic evidence:

State authorization:

Unlined Produced Water Pit Estimated percolation:

Unlined pit: do you have a reclamation bond for the pit?

Operator Name: CENTENNIAL RESOURCE PRODUCTION LLC

Well Name: MASTIFF 22 FEDERAL COM

Well Number: 501H

Is the reclamation bond a rider under the BLM bond?

Unlined pit bond number:

Unlined pit bond amount:

Additional bond information attachment:

Section 4 - Injection

Would you like to utilize Injection PWD options? NO

Produced Water Disposal (PWD) Location:

PWD surface owner:

PWD disturbance (acres):

Injection PWD discharge volume (bbl/day):

Injection well mineral owner:

Injection well type:

Injection well number:

Injection well name:

Assigned injection well API number?

Injection well API number:

Injection well new surface disturbance (acres):

Minerals protection information:

Mineral protection attachment:

Underground Injection Control (UIC) Permit?

UIC Permit attachment:

Section 5 - Surface Discharge

Would you like to utilize Surface Discharge PWD options? NO

Produced Water Disposal (PWD) Location:

PWD surface owner:

PWD disturbance (acres):

Surface discharge PWD discharge volume (bbl/day):

Surface Discharge NPDES Permit?

Surface Discharge NPDES Permit attachment:

Surface Discharge site facilities information:

Surface discharge site facilities map:

Section 6 - Other

Would you like to utilize Other PWD options? NO

Produced Water Disposal (PWD) Location:

PWD surface owner:

PWD disturbance (acres):

Other PWD discharge volume (bbl/day):

Operator Name: CENTENNIAL RESOURCE PRODUCTION LLC

Well Name: MASTIFF 22 FEDERAL COM

Well Number: 501H

Other PWD type description:

Other PWD type attachment:

Have other regulatory requirements been met?

Other regulatory requirements attachment:



U.S. Department of the Interior
BUREAU OF LAND MANAGEMENT

Bond Info Data Report

06/30/2020

APD ID: 10400038195

Submission Date: 01/17/2019

Highlighted data
reflects the most
recent changes

Operator Name: CENTENNIAL RESOURCE PRODUCTION LLC

Well Name: MASTIFF 22 FEDERAL COM

Well Number: 501H

[Show Final Text](#)

Well Type: OIL WELL

Well Work Type: Drill

Bond Information

Federal/Indian APD: FED

BLM Bond number: NMB001471

BIA Bond number:

Do you have a reclamation bond? NO

Is the reclamation bond a rider under the BLM bond?

Is the reclamation bond BLM or Forest Service?

BLM reclamation bond number:

Forest Service reclamation bond number:

Forest Service reclamation bond attachment:

Reclamation bond number:

Reclamation bond amount:

Reclamation bond rider amount:

Additional reclamation bond information attachment:

District I
1625 N. French Dr., Hobbs, NM 88240
Phone: (575) 393-6161 Fax: (575) 393-0720
District II
811 S. First St., Artesia, NM 88210
Phone: (575) 748-1283 Fax: (575) 748-9720
District III
1000 Rio Brazos Road, Aztec, NM 87410
Phone: (505) 334-6178 Fax: (505) 334-6170
District IV
1220 S. St. Francis Dr., Santa Fe, NM 87505
Phone: (505) 476-3460 Fax: (505) 476-3462

State of New Mexico
Energy, Minerals & Natural Resources Department
OIL CONSERVATION DIVISION
1220 South St. Francis Dr.
Santa Fe, NM 87505

Form C-102
Revised August 1, 2011
Submit one copy to appropriate
District Office

OCD - HOBBS
06/30/2020
RECEIVED

☐ AMENDED REPORT

WELL LOCATION AND ACREAGE DEDICATION PLAT

¹ API Number 30-025-47404	² Pool Code 2209	³ Pool Name Antelope Ridge; Bones Spring, West
⁴ Property Code 328512	⁵ Property Name MASTIFF 22 FEDERAL COM	⁶ Well Number #501H
⁷ OGRID No. 372165	⁸ Operator Name CENTENNIAL RESOURCE PRODUCTION, LLC	⁹ Elevation 3431.4'

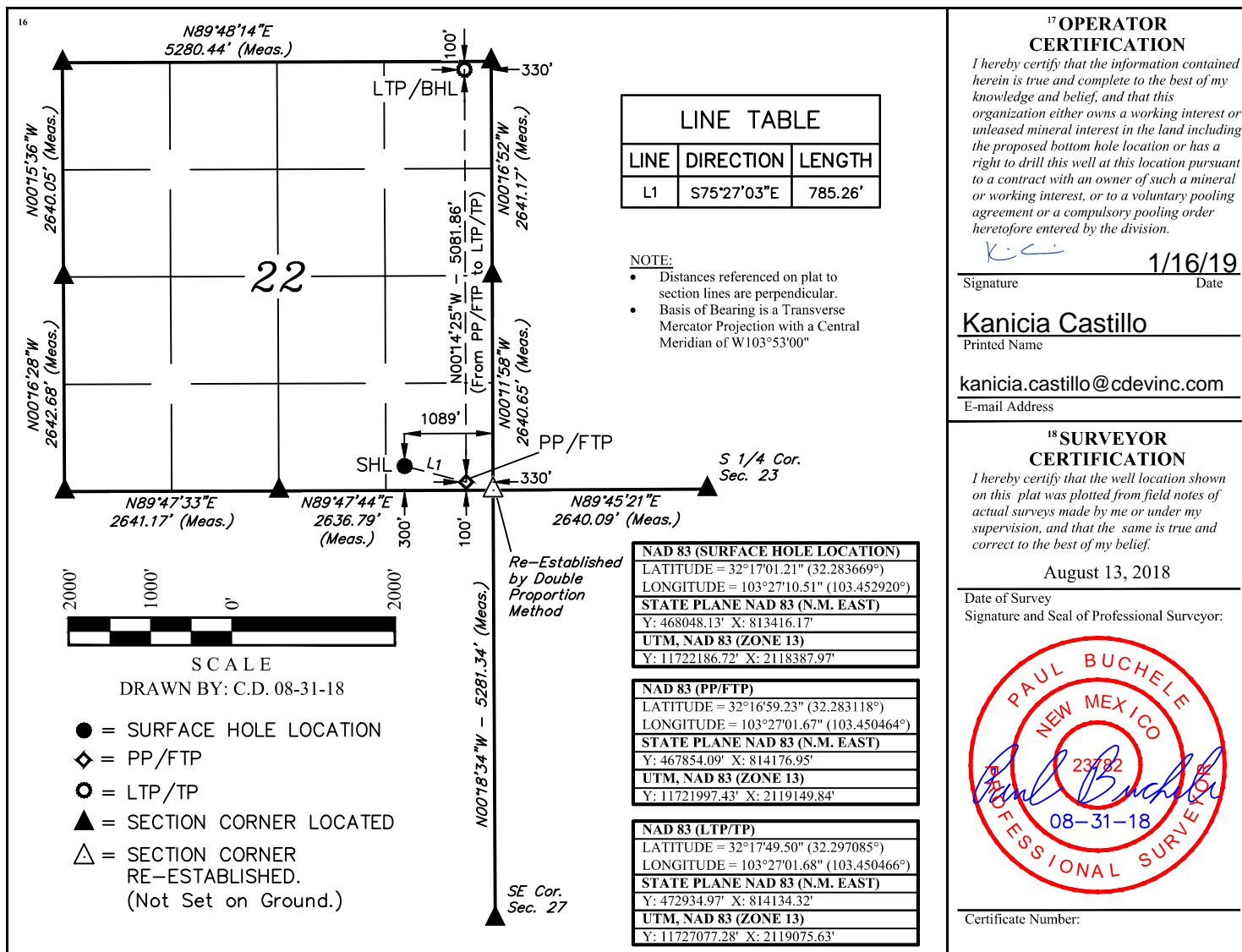
¹⁰ Surface Location

UL or lot no.	Section	Township	Range	Lot Idn	Feet from the	North/South line	Feet from the	East/West line	County
P	22	23S	34E		300	SOUTH	1089	EAST	LEA

¹¹ Bottom Hole Location If Different From Surface

UL or lot no.	Section	Township	Range	Lot Idn	Feet from the	North/South line	Feet from the	East/West line	County
A	22	23S	34E		100	NORTH	330	EAST	LEA
¹² Dedicated Acres 160	¹³ Joint or Infill	¹⁴ Consolidation Code	¹⁵ Order No.						

No allowable will be assigned to this completion until all interests have been consolidated or a non-standard unit has been approved by the division.



District I
1625 N. French Dr., Hobbs, NM 88240
Phone: (575) 393-6161 Fax: (575) 393-0720
District II
811 S. First St., Artesia, NM 88210
Phone: (575) 748-1283 Fax: (575) 748-9720
District III
1000 Rio Brazos Road, Aztec, NM 87410
Phone: (505) 334-6178 Fax: (505) 334-6170
District IV
1220 S. St. Francis Dr., Santa Fe, NM 87505
Phone: (505) 476-3460 Fax: (505) 476-3462

State of New Mexico
Energy, Minerals & Natural Resources Department
OIL CONSERVATION DIVISION
1220 South St. Francis Dr.
Santa Fe, NM 87505

Form C-102
Revised August 1, 2011
Submit one copy to appropriate
District Office

☐ AMENDED REPORT

WELL LOCATION AND ACREAGE DEDICATION PLAT

¹ API Number 30-025-47404	² Pool Code 2209	³ Pool Name Antelope Ridge; Bones Spring, West
⁴ Property Code	⁵ Property Name MASTIFF 22 FEDERAL COM	⁶ Well Number #501H
⁷ OGRID No. 372165	⁸ Operator Name CENTENNIAL RESOURCE PRODUCTION, LLC	⁹ Elevation 3431.4'

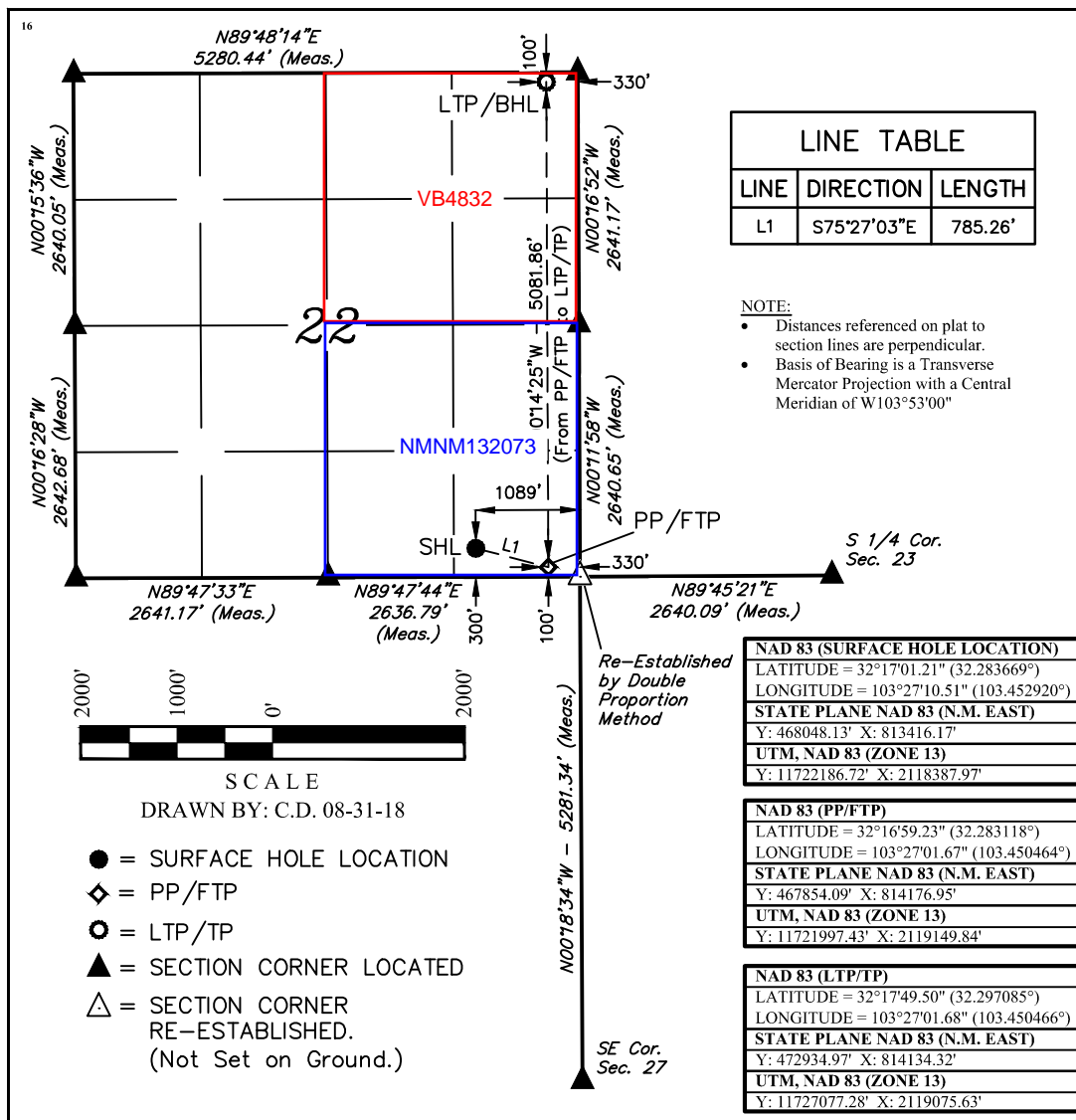
¹⁰ Surface Location

UL or lot no.	Section	Township	Range	Lot Idn	Feet from the	North/South line	Feet from the	East/West line	County
P	22	23S	34E		300	SOUTH	1089	EAST	LEA

¹¹ Bottom Hole Location If Different From Surface

UL or lot no.	Section	Township	Range	Lot Idn	Feet from the	North/South line	Feet from the	East/West line	County
A	22	23S	34E		100	NORTH	330	EAST	LEA
¹² Dedicated Acres 160	¹³ Joint or Infill	¹⁴ Consolidation Code	¹⁵ Order No.						

No allowable will be assigned to this completion until all interests have been consolidated or a non-standard unit has been approved by the division.



¹⁷ OPERATOR
CERTIFICATION

I hereby certify that the information contained herein is true and complete to the best of my knowledge and belief, and that this organization either owns a working interest or unleased mineral interest in the land including the proposed bottom hole location or has a right to drill this well at this location pursuant to a contract with an owner of such a mineral or working interest, or to a voluntary pooling agreement or a compulsory pooling order heretofore entered by the division.

K.C. 1/16/19
Signature Date

Kanicia Castillo
Printed Name

kanicia.castillo@cdevinc.com
E-mail Address

¹⁸ SURVEYOR
CERTIFICATION

I hereby certify that the well location shown on this plat was plotted from field notes of actual surveys made by me or under my supervision, and that the same is true and correct to the best of my belief.

August 13, 2018

Date of Survey
Signature and Seal of Professional Surveyor:



Certificate Number:

District I
1625 N. French Dr., Hobbs, NM 88240
District II
811 S. First St., Artesia, NM 88210
District III
1000 Rio Brazos Road, Aztec, NM 87410
District IV
1220 S. St. Francis Dr., Santa Fe, NM 87505

State of New Mexico
Energy, Minerals and Natural Resources Department
Oil Conservation Division
1220 South St. Francis Dr.
Santa Fe, NM 87505

Submit Original
to Appropriate
District Office

OCD – HOBBS
06/30/2020
RECEIVED

GAS CAPTURE PLAN

Date: 01/11/2019

☒ Original

Operator & OGRID No.: Centennial Resource Production, LLC 372165

☐ Amended - Reason for Amendment: _____

This Gas Capture Plan outlines actions to be taken by the Operator to reduce well/production facility flaring/venting for new completion (new drill, recomple to new zone, re-frac) activity.

Note: Form C-129 must be submitted and approved prior to exceeding 60 days allowed by Rule (Subsection A of 19.15.18.12 NMAC).

Well(s)/Production Facility – Name of facility

The well(s) that will be located at the production facility are shown in the table below.

Well Name	API	Well Location (ULSTR)	Footages	Expected MCF/D	Flared or Vented	Comments
Dandie 22 Federal Com 303H	Pending	P-22-23S-34E	450 FSL 1149 FEL	2860 MCF/D	Neither	New Well
Dandie 22 Federal Com 503H	Pending	P-22-23S-34E	300 FSL 1149 FEL	2660 MCF/D	Neither	New Well
Mastiff 22 Federal Com 301H	Pending	P-22-23S-34E	450 FSL 1089 FEL	2740 MCF/D	Neither	New Well
Mastiff 22 Federal Com 302H	Pending	P-22-23S-34E	450 FSL 1119 FEL	2420 MCF/D	Neither	New Well
Mastiff 22 Federal Com 501H 30-025-47404	Pending	P-22-23S-34E	300 FSL 1089 FEL	2220 MCF/D	Neither	New Well
Mastiff 22 Federal Com 502H	Pending	P-22-23S-34E	300 FSL 1119 FEL	2540 MCF/D	Neither	New Well

Gathering System and Pipeline Notification

Well(s) will be connected to a production facility after flowback operations are complete, if gas transporter system is in place. The gas produced from production facility is dedicated Lucid Energy Group low/high pressure gathering system located in Lea County, New Mexico. It will require 0' of pipeline to connect the facility to low/high pressure gathering system. Centennial Resource Production, LLC provides (periodically) to Lucid Energy Group a drilling, completion and estimated first production date for wells that are scheduled to be drilled in the foreseeable future. In addition, Centennial Resource Production, LLC and Lucid Energy Group have periodic conference calls to discuss changes to drilling and completion schedules. Gas from these wells will be processed at Red Hills Plant located in Sec. 13, Twn. 24S, Rng. 33E, Lea County, New Mexico. The actual flow of the gas will be based on compression operating parameters and gathering system pressures.

Flowback Strategy

After the fracture treatment/completion operations, well(s) will be produced to temporary production tanks and gas will be flared or vented. During flowback, the fluids and sand content will be monitored. When the produced fluids contain minimal sand, the wells will be turned to production facilities. Gas sales should start as soon as the wells start flowing through the production facilities, unless there are operational issues on Lucid Energy Group system at that time. Based on current information, it is Centennial Resource Production, LLC's belief the system can take this gas upon completion of the well(s).

Safety requirements during cleanout operations from the use of underbalanced air cleanout systems may necessitate that sand and non-pipeline quality gas be vented and/or flared rather than sold on a temporary basis.

Alternatives to Reduce Flaring

Below are alternatives considered from a conceptual standpoint to reduce the amount of gas flared.

- Power Generation – On lease
 - Only a portion of gas is consumed operating the generator, remainder of gas will be flared
- Compressed Natural Gas – On lease
 - Gas flared would be minimal, but might be uneconomical to operate when gas volume declines
- NGL Removal – On lease
 - Plants are expensive, residue gas is still flared, and uneconomical to operate when gas volume declines