

UNITED STATES  
DEPARTMENT OF THE INTERIOR  
BUREAU OF LAND MANAGEMENTFORM APPROVED  
OMB NO. 1004-0137  
Expires: January 31, 2018**SUNDRY NOTICES AND REPORTS ON WELLS**  
**Do not use this form for proposals to drill or to re-enter an abandoned well. Use form 3160-3 (APD) for such proposals.**5. Lease Serial No.  
NMNM66925

6. If Indian, Allottee or Tribe Name

7. If Unit or CA/Agreement, Name and/or No.

8. Well Name and No.  
MESA VERDE WC UNIT 9H9. API Well No.  
30-025-45871-00-X110. Field and Pool or Exploratory Area  
WOLFCAMP11. County or Parish, State  
LEA COUNTY, NM**SUBMIT IN TRIPLICATE - Other instructions on page 2**

1. Type of Well

☒ Oil Well ☐ Gas Well ☐ Other

2. Name of Operator

OXY USA INCORPORATED

Contact: LESLIE REEVES

E-Mail: LESLIE\_REEVES@OXY.COM

3a. Address

P O BOX 4294  
HOUSTON, TX 77210-4294

3b. Phone No. (include area code)

Ph: 713-497-2492

4. Location of Well (Footage, Sec., T., R., M., or Survey Description)

Sec 18 T24S R32E SESE 422FSL 1254FEL  
32.211319 N Lat, 103.709343 W Lon**12. CHECK THE APPROPRIATE BOX(ES) TO INDICATE NATURE OF NOTICE, REPORT, OR OTHER DATA**

TYPE OF SUBMISSION	TYPE OF ACTION			
<input checked="" type="checkbox"/> Notice of Intent	<input type="checkbox"/> Acidize	<input type="checkbox"/> Deepen	<input type="checkbox"/> Production (Start/Resume)	<input type="checkbox"/> Water Shut-Off
<input type="checkbox"/> Subsequent Report	<input type="checkbox"/> Alter Casing	<input type="checkbox"/> Hydraulic Fracturing	<input type="checkbox"/> Reclamation	<input type="checkbox"/> Well Integrity
<input type="checkbox"/> Final Abandonment Notice	<input type="checkbox"/> Casing Repair	<input type="checkbox"/> New Construction	<input type="checkbox"/> Recomplete	<input checked="" type="checkbox"/> Other
	<input type="checkbox"/> Change Plans	<input type="checkbox"/> Plug and Abandon	<input type="checkbox"/> Temporarily Abandon	Change to Original A
	<input type="checkbox"/> Convert to Injection	<input type="checkbox"/> Plug Back	<input type="checkbox"/> Water Disposal	PD

13. Describe Proposed or Completed Operation: Clearly state all pertinent details, including estimated starting date of any proposed work and approximate duration thereof. If the proposal is to deepen directionally or recompleat horizontally, give subsurface locations and measured and true vertical depths of all pertinent markers and zones. Attach the Bond under which the work will be performed or provide the Bond No. on file with BLM/BIA. Required subsequent reports must be filed within 30 days following completion of the involved operations. If the operation results in a multiple completion or recompleat in a new interval, a Form 3160-4 must be filed once testing has been completed. Final Abandonment Notices must be filed only after all requirements, including reclamation, have been completed and the operator has determined that the site is ready for final inspection.

OXY USA INC. respectfully requests to amend the casing and cementing design in the APD. See the attached revised production casing and drill plan information.

14. I hereby certify that the foregoing is true and correct.

**Electronic Submission #523193 verified by the BLM Well Information System**  
**For OXY USA INCORPORATED, sent to the Hobbs**  
**Committed to AFMSS for processing by PRISCILLA PEREZ on 08/03/2020 (20PP3225SE)**

Name (Printed/Typed) LESLIE REEVES

Title REGULATORY ADVISOR

Signature (Electronic Submission)

Date 07/27/2020

**THIS SPACE FOR FEDERAL OR STATE OFFICE USE**

Approved By NDUNGU KAMAU

Title PETROLEUM ENGINEER

Date 08/04/2020

Conditions of approval, if any, are attached. Approval of this notice does not warrant or certify that the applicant holds legal or equitable title to those rights in the subject lease which would entitle the applicant to conduct operations thereon.

Office Hobbs

Title 18 U.S.C. Section 1001 and Title 43 U.S.C. Section 1212, make it a crime for any person knowingly and willfully to make to any department or agency of the United States any false, fictitious or fraudulent statements or representations as to any matter within its jurisdiction.

(Instructions on page 2)

**\*\* BLM REVISED \*\* BLM REVISED \*\* BLM REVISED \*\* BLM REVISED \*\* BLM REVISED \*\***

Accepted - KMS NMOCD

## Revisions to Operator-Submitted EC Data for Sundry Notice #523193

	Operator Submitted	BLM Revised (AFMSS)
Sundry Type:	APDCH NOI	APDCH NOI
Lease:	NMNM66925	NMNM66925
Agreement:		
Operator:	OXY USA INC PO 4294 HOUSTON, TX 77210 Ph: 713-497-2492	OXY USA INCORPORATED P O BOX 4294 HOUSTON, TX 77210-4294 Ph: 713.366.5303
Admin Contact:	LESLIE REEVES REGULATORY ADVISOR E-Mail: Leslie_Reeves@oxy.com  Ph: 713-497-2492	LESLIE REEVES REGULATORY ADVISOR E-Mail: LESLIE_REEVES@OXY.COM Cell: 281-733-0824 Ph: 713-497-2492
Tech Contact:	LESLIE REEVES REGULATORY ADVISOR E-Mail: Leslie_Reeves@oxy.com  Ph: 713-497-2492	LESLIE REEVES REGULATORY ADVISOR E-Mail: LESLIE_REEVES@OXY.COM Cell: 281-733-0824 Ph: 713-497-2492
Location:		
State:	NM	NM
County:	LEA	LEA
Field/Pool:	MESA VERDE; WOLFCAMP	WOLFCAMP
Well/Facility:	MESA VERDE WOLFCAMP UNIT 9H Sec 18 T24S R32E SWSW 422FSL 1254FEL 32.211319 N Lat, 103.709344 W Lon	MESA VERDE WC UNIT 9H Sec 18 T24S R32E SESE 422FSL 1254FEL 32.211319 N Lat, 103.709343 W Lon

# PECOS DISTRICT

## DRILLING CONDITIONS OF APPROVAL

<b>OPERATOR'S NAME:</b>	Oxy USA Incorporated
<b>LEASE NO.:</b>	NMNM066925
<b>WELL NAME &amp; NO.:</b>	Mesa Verde WC Unit 9H
<b>SURFACE HOLE FOOTAGE:</b>	422'/S & 1254'/E
<b>BOTTOM HOLE FOOTAGE:</b>	180'/W & 440'/E
<b>LOCATION:</b>	Section 18, T.24 S., R.32 E., NMPM
<b>COUNTY:</b>	Lea County, New Mexico

**ALL PREVIOUS COAs STILL APPLY.**

### **A. CASING**

#### **Casing Design:**

3. The minimum required fill of cement behind the **5-1/2 X 4-1/2** inch production casing is:

#### **Option 1 (Single Stage):**

- Cement should tie-back at least **200 feet** into previous casing string. Operator shall provide method of verification.

#### **Option 2:**

Operator has proposed a DV tool, the depth may be adjusted as long as the cement is changed proportionally. The DV tool may be cancelled if cement circulates to surface on the first stage.

- a. First stage to DV tool: Cement to circulate. If cement does not circulate off the DV tool, contact the appropriate BLM office before proceeding with second stage cement job.
- b. Second stage above DV tool:
  - Cement should tie-back at least **200 feet** into previous casing string. Operator shall provide method of verification.

**NMK08042020**

**OXY USA Inc. – Mesa Verde WC Unit 9H –  
Amended Drilling Plan**

**This sundry request is to change the production hole and casing due to an intermediate casing leak and subsequent casing patch placed at 10,606' to 10,637' MD.**

API Number	Well Name
30-025-45871	Mesa Verde WC Unit 9H

## 1. Casing Program

Hole Size (in)	Casing Interval		Csg. Size (in)	Weight (lbs)	Grade	Conn.	SF	SF Burst	Body SF	Joint SF
	From (ft)	To (ft)					Collapse		Tension	Tension
6.125	0	11,200	5.5	20	P-110	DQX	1.125	1.2	1.4	1.4
6.125	11,200	22,516	4.5	13.5	P-110	DQX	1.125	1.2	1.4	1.4
SF Values will meet or Exceed										

All casing strings will be tested in accordance with Onshore Oil and Gas Order #2 III.B.1.h

## 2. Cementing Program

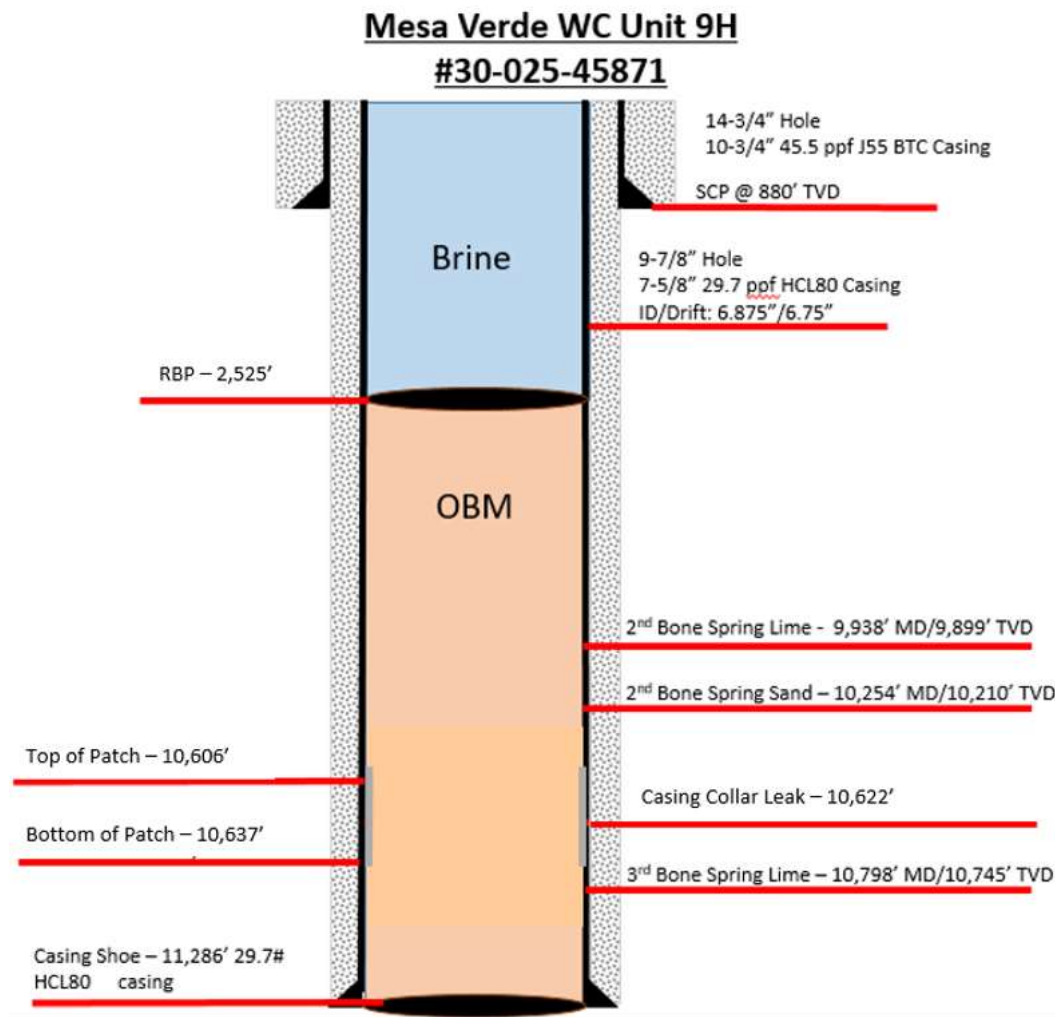
Casing String	# Sks	Wt. (lb/gal)	Yld (ft <sup>3</sup> /sack)	H2O (gal/sk)	500# Comp. Strength (hours)	Slurry Description
Production (Lead)	N/A	N/A	N/A	N/A	N/A	N/A
Production (Tail)	978	13.2	1.38	6.686	3:39	Class H Cement, Retarder, Dispersant, Salt
Casing String			Top (ft)	Bottom (ft)	% Excess	
Production (Lead)			N/A	N/A	N/A	
Production (Tail)			10700	22516	20%	

## Annular Clearance Variance Request

Oxy requests permission to allow deviation from the 0.422" annular clearance requirement from Onshore Order #2 under the following conditions:

**OXY USA Inc. – Mesa Verde WC Unit 9H –  
Amended Drilling Plan**

1. Annular clearance less than 0.422" is acceptable between casing patch ID (6.351") and 5.5" production casing collar (6.05") within the interval of 10,606' – 10,637' MD.



### 3. Pressure Control Equipment

BOP installed and tested before drilling which hole?	Size?	Min. Required WP	Type	✓	Tested to:
6.125" Hole	13-5/8"	5M	Annular	✓	100% of working pressure
		10M	Blind Ram	✓	250 psi / 10000 psi
			Pipe Ram		
			Double Ram	✓	
			Other*		

\*Specify if additional ram is utilized.

BOP/BOPE will be tested by an independent service company to 250 psi low and the high pressure indicated above per Onshore Order 2 requirements. The System may be upgraded to a higher pressure but still tested to the working pressure listed in the table above. If the system is upgraded all the components installed will be functional and tested.

**OXY USA Inc. – Mesa Verde WC Unit 9H –  
Amended Drilling Plan**

Pipe rams will be operationally checked each 24 hour period. Blind rams will be operationally checked on each trip out of the hole. These checks will be noted on the daily tour sheets. Other accessories to the BOP equipment will include a Kelly cock and floor safety valve (inside BOP) and choke lines and choke manifold. See attached schematics.

	Formation integrity test will be performed per Onshore Order #2. On Exploratory wells or on that portion of any well approved for a 5M BOPE system or greater, a pressure integrity test of each casing shoe shall be performed. Will be tested in accordance with Onshore Oil and Gas Order #2 III.B.1.i.
	A variance is requested for the use of a flexible choke line from the BOP to Choke Manifold. See attached for specs and hydrostatic test chart.
<b>Y</b>	Are anchors required by manufacturer?
	A multibowl or a unionized multibowl wellhead system will be employed. The wellhead and connection to the BOPE will meet all API 6A requirements. The BOP will be tested per Onshore Order #2 after installation on the surface casing which will cover testing requirements for a maximum of 30 days. If any seal subject to test pressure is broken the system must be tested. We will test the flange connection of the wellhead with a test port that is directly in the flange. We are proposing that we will run the wellhead through the rotary prior to cementing surface casing as discussed with the BLM on October 8, 2015. See attached schematics.

**4. Mud Program**

Depth		Type	Weight (ppg)	Viscosity	Water Loss
From (ft)	To (ft)				
11290	22516	Water-Based or Oil-Based Mud	11-12.5	38-50	N/C

Sufficient mud materials to maintain mud properties and meet minimum lost circulation and weight increase requirements will be kept on location at all times. The following is a general list of products: Barite, Bentonite, Gypsum, Lime, Soda Ash, Caustic Soda, Nut Plug, Cedar Fiber, Cotton Seed Hulls, Drilling Paper, Salt Water Clay, CACL2. Oxy will use a closed mud system.

What will be used to monitor the loss or gain of fluid?	PVT/MD Totco/Visual Monitoring
---	--------------------------------

**Total estimated cuttings volume: 1607.0 bbls.**