

UNITED STATES
DEPARTMENT OF THE INTERIOR
BUREAU OF LAND MANAGEMENT

APPLICATION FOR PERMIT TO DRILL OR REENTER

OCD - HOBBS
08/10/2020
RECEIVED

FORM APPROVED
OMB No. 1004-0137
Expires: January 31, 2018

1a. Type of work: <input type="checkbox"/> DRILL <input type="checkbox"/> REENTER		5. Lease Serial No.
1b. Type of Well: <input type="checkbox"/> Oil Well <input type="checkbox"/> Gas Well <input type="checkbox"/> Other		6. If Indian, Allottee or Tribe Name
1c. Type of Completion: <input type="checkbox"/> Hydraulic Fracturing <input type="checkbox"/> Single Zone <input type="checkbox"/> Multiple Zone		7. If Unit or CA Agreement, Name and No.
2. Name of Operator [16696]		8. Lease Name and Well No. [322423]
3a. Address	3b. Phone No. (include area code)	9. API Well No. 30-025-47541
4. Location of Well (Report location clearly and in accordance with any State requirements. *) At surface At proposed prod. zone		10. Field and Pool, or Exploratory [97366]
14. Distance in miles and direction from nearest town or post office*		11. Sec., T. R. M. or Blk. and Survey or Area
15. Distance from proposed* location to nearest property or lease line, ft. (Also to nearest drig. unit line, if any)		12. County or Parish
16. No of acres in lease		13. State
17. Spacing Unit dedicated to this well		
18. Distance from proposed location* to nearest well, drilling, completed, applied for, on this lease, ft.		
19. Proposed Depth		
20. BLM/BIA Bond No. in file		
21. Elevations (Show whether DF, KDB, RT, GL, etc.)		
22. Approximate date work will start*		
23. Estimated duration		
24. Attachments		

The following, completed in accordance with the requirements of Onshore Oil and Gas Order No. 1, and the Hydraulic Fracturing rule per 43 CFR 3162.3-3 (as applicable)

- | | |
|--|---|
| 1. Well plat certified by a registered surveyor. | 4. Bond to cover the operations unless covered by an existing bond on file (see Item 20 above). |
| 2. A Drilling Plan. | 5. Operator certification. |
| 3. A Surface Use Plan (if the location is on National Forest System Lands, the SUPO must be filed with the appropriate Forest Service Office). | 6. Such other site specific information and/or plans as may be requested by the BLM. |

25. Signature	Name (Printed/Typed)	Date
Title		
Approved by (Signature)	Name (Printed/Typed)	Date
Title		
Office		

Application approval does not warrant or certify that the applicant holds legal or equitable title to those rights in the subject lease which would entitle the applicant to conduct operations thereon.
Conditions of approval, if any, are attached.

Title 18 U.S.C. Section 1001 and Title 43 U.S.C. Section 1212, make it a crime for any person knowingly and willfully to make to any department or agency of the United States any false, fictitious or fraudulent statements or representations as to any matter within its jurisdiction.

GCP Rec 08/10/2020

SL

(Continued on page 2)

APPROVED WITH CONDITIONS
Approval Date: 07/30/2020

KZ
08/21/2020

*(Instructions on page 2)

PECOS DISTRICT

DRILLING CONDITIONS OF APPROVAL

OPERATOR'S NAME:	OXY USA INCORPORATED
WELL NAME & NO.:	LOST TANK 30-19 FEDERAL COM 12H
SURFACE HOLE FOOTAGE:	338'/N & 1762'/W
BOTTOM HOLE FOOTAGE:	20'/S & 1340'/W
LOCATION:	Section 19, T.22 S., R.32 E., NMP
COUNTY:	Lea County, New Mexico

COA

H2S	<input type="radio"/> Yes	<input checked="" type="radio"/> No	
Potash	<input checked="" type="radio"/> None	<input type="radio"/> Secretary	<input type="radio"/> R-111-P
Cave/Karst Potential	<input checked="" type="radio"/> Low	<input type="radio"/> Medium	<input type="radio"/> High
Cave/Karst Potential	<input type="radio"/> Critical		
Variance	<input type="radio"/> None	<input checked="" type="radio"/> Flex Hose	<input type="radio"/> Other
Wellhead	<input type="radio"/> Conventional	<input type="radio"/> Multibowl	<input checked="" type="radio"/> Both
Other	<input type="checkbox"/> 4 String Area	<input type="checkbox"/> Capitan Reef	<input type="checkbox"/> WIPP
Other	<input checked="" type="checkbox"/> Fluid Filled	<input type="checkbox"/> Cement Squeeze	<input type="checkbox"/> Pilot Hole
Special Requirements	<input type="checkbox"/> Water Disposal	<input checked="" type="checkbox"/> COM	<input type="checkbox"/> Unit

A. HYDROGEN SULFIDE

Hydrogen Sulfide (H2S) monitors shall be installed prior to drilling out the surface shoe. If H2S is detected in concentrations greater than 100 ppm, the Hydrogen Sulfide area shall meet Onshore Order 6 requirements, which includes equipment and personnel/public protection items. If Hydrogen Sulfide is encountered, provide measured values and formations to the BLM.

B. CASING

Casing Design:

1. The **13-3/8** inch surface casing shall be set at approximately **920** feet (a minimum of **25 feet (Lea County)** into the Rustler Anhydrite and above the salt) and cemented to the surface.
 - a. If cement does not circulate to the surface, the appropriate BLM office shall be notified and a temperature survey utilizing an electronic type temperature survey with surface log readout will be used or a cement bond log shall be run to verify the top of the cement. Temperature survey will be run a minimum of six hours after pumping cement and ideally between 8-10 hours after completing the cement job.

- b. Wait on cement (WOC) time for a primary cement job will be a minimum of **8 hours** or 500 pounds compressive strength, whichever is greater. (This is to include the lead cement)
- c. Wait on cement (WOC) time for a remedial job will be a minimum of 4 hours after bringing cement to surface or 500 pounds compressive strength, whichever is greater.
- d. If cement falls back, remedial cementing will be done prior to drilling out that string.

Intermediate casing must be kept fluid filled to meet BLM minimum collapse requirement.

2. The **9-5/8** inch intermediate casing shall be set at approximately **4650** feet. The minimum required fill of cement behind the **9-5/8** inch intermediate casing is:

Option 1 (Single Stage):

- Cement to surface. If cement does not circulate see B.1.a, c-d above.
Wait on cement (WOC) time for a primary cement job is to include the lead cement slurry due to cave/karst or potash.

Option 2:

Operator has proposed a DV tool, the depth may be adjusted as long as the cement is changed proportionally. The DV tool may be cancelled if cement circulates to surface on the first stage.

- a. First stage to DV tool: Cement to circulate. If cement does not circulate off the DV tool, contact the appropriate BLM office before proceeding with second stage cement job.
- b. Second stage above DV tool:
 - Cement to surface. If cement does not circulate, contact the appropriate BLM office.
Wait on cement (WOC) time for a primary cement job is to include the lead cement slurry due to cave/karst or potash.

3. The minimum required fill of cement behind the **5-1/2** inch production casing is:

Option 1 (Single Stage):

- Cement should tie-back at least **200 feet** into previous casing string. Operator shall provide method of verification.

Option 2:

Operator has proposed a DV tool, the depth may be adjusted as long as the cement is changed proportionally. The DV tool may be cancelled if cement circulates to surface on the first stage.

- a. First stage to DV tool: Cement to circulate. If cement does not circulate off the DV tool, contact the appropriate BLM office before proceeding with second stage cement job.
- b. Second stage above DV tool:
 - Cement should tie-back at least **200 feet** into previous casing string. Operator shall provide method of verification. **Excess calculates to 16% - additional cement might be required.**

C. PRESSURE CONTROL

1. Variance approved to use flex line from BOP to choke manifold. Manufacturer's specification to be readily available. No external damage to flex line. Flex line to be installed as straight as possible (no hard bends).'
- 2.

Option 1:

- a. Minimum working pressure of the blowout preventer (BOP) and related equipment (BOPE) required for drilling below the surface casing shoe shall be **3000 (3M)** psi.
- b. Minimum working pressure of the blowout preventer (BOP) and related equipment (BOPE) required for drilling below the intermediate casing shoe shall be **3000 (3M)** psi.

Option 2:

1. Operator has proposed a multi-bowl wellhead assembly. This assembly will only be tested when installed on the surface casing. Minimum working pressure of the blowout preventer (BOP) and related equipment (BOPE) required for drilling below the surface casing shoe shall be **3000 (3M)** psi.
 - a. Wellhead shall be installed by manufacturer's representatives, submit documentation with subsequent sundry.
 - b. If the welding is performed by a third party, the manufacturer's representative shall monitor the temperature to verify that it does not exceed the maximum temperature of the seal.
 - c. Manufacturer representative shall install the test plug for the initial BOP test.

- d. If the cement does not circulate and one inch operations would have been possible with a standard wellhead, the well head shall be cut off, cementing operations performed and another wellhead installed.
- e. Whenever any seal subject to test pressure is broken, all the tests in OOGO2.III.A.2.i must be followed.

D. SPECIAL REQUIREMENT (S)

Communitization Agreement

- The operator will submit a Communitization Agreement to the Santa Fe Office, 301 Dinosaur Trail Santa Fe, New Mexico 87508, at least 90 days before the anticipated date of first production from a well subject to a spacing order issued by the New Mexico Oil Conservation Division. The Communitization Agreement will include the signatures of all working interest owners in all Federal and Indian leases subject to the Communitization Agreement (i.e., operating rights owners and lessees of record), or certification that the operator has obtained the written signatures of all such owners and will make those signatures available to the BLM immediately upon request.
- If the operator does not comply with this condition of approval, the BLM may take enforcement actions that include, but are not limited to, those specified in 43 CFR 3163.1.
- In addition, the well sign shall include the surface and bottom hole lease numbers. When the Communitization Agreement number is known, it shall also be on the sign.

Offline Cementing

- Contact the BLM prior to the commencement of any offline cementing procedure.

BOP Break Testing Variance

- BOP break testing is not permitted on this well.

GENERAL REQUIREMENTS

The BLM is to be notified in advance for a representative to witness:

- a. Spudding well (minimum of 24 hours)
- b. Setting and/or Cementing of all casing strings (minimum of 4 hours)
- c. BOPE tests (minimum of 4 hours)

☒ Eddy County

Call the Carlsbad Field Office, 620 East Greene St., Carlsbad, NM 88220,
(575) 361-2822

☒ Lea County

Call the Hobbs Field Station, 414 West Taylor, Hobbs NM 88240, (575)
393-3612

1. Unless the production casing has been run and cemented or the well has been properly plugged, the drilling rig shall not be removed from over the hole without prior approval.
 - a. In the event the operator has proposed to drill multiple wells utilizing a skid/walking rig. Operator shall secure the wellbore on the current well, after installing and testing the wellhead, by installing a blind flange of like pressure rating to the wellhead and a pressure gauge that can be monitored while drilling is performed on the other well(s).
 - b. When the operator proposes to set surface casing with Spudder Rig
 - Notify the BLM when moving in and removing the Spudder Rig.
 - Notify the BLM when moving in the 2nd Rig. Rig to be moved in within 90 days of notification that Spudder Rig has left the location.
 - BOP/BOPE test to be conducted per Onshore Oil and Gas Order No. 2 as soon as 2nd Rig is rigged up on well.
2. Floor controls are required for 3M or Greater systems. These controls will be on the rig floor, unobstructed, readily accessible to the driller and will be operational at all times during drilling and/or completion activities. Rig floor is defined as the area immediately around the rotary table; the area immediately above the substructure on which the draw works are located, this does not include the dog house or stairway area.
3. The record of the drilling rate along with the GR/N well log run from TD to surface (horizontal well – vertical portion of hole) shall be submitted to the BLM office as well as all other logs run on the borehole 30 days from completion. If available, a digital copy of the logs is to be submitted in addition to the paper copies. The Rustler top and top and bottom of Salt are to be recorded on the Completion Report.

A. CASING

1. Changes to the approved APD casing program need prior approval if the items substituted are of lesser grade or different casing size or are Non-API. The Operator can exchange the components of the proposal with that of superior strength (i.e. changing from J-55 to N-80, or from 36# to 40#). Changes to the approved cement program need prior approval if the altered cement plan has less volume or strength or if the changes are substantial (i.e. Multistage tool, ECP, etc.). The initial wellhead installed on the well will remain on the well with spools used as needed.
2. Wait on cement (WOC) for Potash Areas: After cementing but before commencing any tests, the casing string shall stand cemented under pressure until both of the following conditions have been met: 1) cement reaches a minimum compressive strength of 500 psi for all cement blends, 2) until cement has been in place at least 24 hours. WOC time will be recorded in the driller's log. The casing integrity test can be done (prior to the cement setting up) immediately after bumping the plug.
3. Wait on cement (WOC) for Water Basin: After cementing but before commencing any tests, the casing string shall stand cemented under pressure until both of the following conditions have been met: 1) cement reaches a minimum compressive strength of 500 psi at the shoe, 2) until cement has been in place at least 8 hours. WOC time will be recorded in the driller's log. See individual casing strings for details regarding lead cement slurry requirements. The casing integrity test can be done (prior to the cement setting up) immediately after bumping the plug.
4. Provide compressive strengths including hours to reach required 500 pounds compressive strength prior to cementing each casing string. Have well specific cement details onsite prior to pumping the cement for each casing string.
5. No pea gravel permitted for remedial or fall back remedial without prior authorization from the BLM engineer.
6. On that portion of any well approved for a 5M BOPE system or greater, a pressure integrity test of each casing shoe shall be performed. Formation at the shoe shall be tested to a minimum of the mud weight equivalent anticipated to control the formation pressure to the next casing depth or at total depth of the well. This test shall be performed before drilling more than 20 feet of new hole.
7. If hardband drill pipe is rotated inside casing, returns will be monitored for metal. If metal is found in samples, drill pipe will be pulled and rubber protectors which have a larger diameter than the tool joints of the drill pipe will be installed prior to continuing drilling operations.
8. Whenever a casing string is cemented in the R-111-P potash area, the NMOCD requirements shall be followed.

B. PRESSURE CONTROL

1. All blowout preventer (BOP) and related equipment (BOPE) shall comply with well control requirements as described in Onshore Oil and Gas Order No. 2 and API RP 53 Sec. 17.
2. If a variance is approved for a flexible hose to be installed from the BOP to the choke manifold, the following requirements apply: The flex line must meet the requirements of API 16C. Check condition of flexible line from BOP to choke manifold, replace if exterior is damaged or if line fails test. Line to be as straight as possible with no hard bends and is to be anchored according to Manufacturer's requirements. The flexible hose can be exchanged with a hose of equal size and equal or greater pressure rating. Anchor requirements, specification sheet and hydrostatic pressure test certification matching the hose in service, to be onsite for review. These documents shall be posted in the company man's trailer and on the rig floor.
3. 5M or higher system requires an HCR valve, remote kill line and annular to match. The remote kill line is to be installed prior to testing the system and tested to stack pressure.
4. If the operator has proposed a multi-bowl wellhead assembly in the APD. The following requirements must be met:
 - a. Wellhead shall be installed by manufacturer's representatives, submit documentation with subsequent sundry.
 - b. If the welding is performed by a third party, the manufacturer's representative shall monitor the temperature to verify that it does not exceed the maximum temperature of the seal.
 - c. Manufacturer representative shall install the test plug for the initial BOP test.
 - d. Whenever any seal subject to test pressure is broken, all the tests in OOGO2.III.A.2.i must be followed.
 - e. If the cement does not circulate and one inch operations would have been possible with a standard wellhead, the well head shall be cut off, cementing operations performed and another wellhead installed.
5. The appropriate BLM office shall be notified a minimum of 4 hours in advance for a representative to witness the tests.
 - a. In a water basin, for all casing strings utilizing slips, these are to be set as soon as the crew and rig are ready and any fallback cement remediation has been done. The casing cut-off and BOP installation can be initiated four hours after installing the slips, which will be approximately six hours after bumping the plug. For those casing strings not using slips, the minimum wait time before cut-off is eight hours after bumping the plug. BOP/BOPE testing can begin after cut-off or once cement reaches 500 psi compressive strength (including

lead when specified), whichever is greater. However, if the float does not hold, cut-off cannot be initiated until cement reaches 500 psi compressive strength (including lead when specified).

- b. In potash areas, for all casing strings utilizing slips, these are to be set as soon as the crew and rig are ready and any fallback cement remediation has been done. For all casing strings, casing cut-off and BOP installation can be initiated at twelve hours after bumping the plug. However, **no tests** shall commence until the cement has had a minimum of 24 hours setup time, except the casing pressure test can be initiated immediately after bumping the plug (only applies to single stage cement jobs).
- c. The tests shall be done by an independent service company utilizing a test plug not a cup or J-packer. The operator also has the option of utilizing an independent tester to test without a plug (i.e. against the casing) pursuant to Onshore Order 2 with the pressure not to exceed 70% of the burst rating for the casing. Any test against the casing must meet the WOC time for water basin (8 hours) or potash (24 hours) or 500 pounds compressive strength, whichever is greater, prior to initiating the test (see casing segment as lead cement may be critical item).
- d. The test shall be run on a 5000 psi chart for a 2-3M BOP/BOP, on a 10000 psi chart for a 5M BOP/BOPE and on a 15000 psi chart for a 10M BOP/BOPE. If a linear chart is used, it shall be a one hour chart. A circular chart shall have a maximum 2 hour clock. If a twelve hour or twenty-four hour chart is used, tester shall make a notation that it is run with a two hour clock.
- e. The results of the test shall be reported to the appropriate BLM office.
- f. All tests are required to be recorded on a calibrated test chart. A copy of the BOP/BOPE test chart and a copy of independent service company test will be submitted to the appropriate BLM office.
- g. The BOP/BOPE test shall include a low pressure test from 250 to 300 psi. The test will be held for a minimum of 10 minutes if test is done with a test plug and 30 minutes without a test plug. This test shall be performed prior to the test at full stack pressure.
- h. BOP/BOPE must be tested by an independent service company within 500 feet of the top of the Wolfcamp formation if the time between the setting of the intermediate casing and reaching this depth exceeds 20 days. This test does not exclude the test prior to drilling out the casing shoe as per Onshore Order No. 2.

C. DRILLING MUD

Mud system monitoring equipment, with derrick floor indicators and visual and audio alarms, shall be operating before drilling into the Wolfcamp formation, and shall be used until production casing is run and cemented.

D. WASTE MATERIAL AND FLUIDS

All waste (i.e. drilling fluids, trash, salts, chemicals, sewage, gray water, etc.) created as a result of drilling operations and completion operations shall be safely contained and disposed of properly at a waste disposal facility. No waste material or fluid shall be disposed of on the well location or surrounding area.

Porto-johns and trash containers will be on-location during fracturing operations or any other crew-intensive operations.

NMK07092020



U.S. Department of the Interior
BUREAU OF LAND MANAGEMENT

Operator Certification Data Report

08/10/2020

Operator Certification

I hereby certify that I, or someone under my direct supervision, have inspected the drill site and access route proposed herein; that I am familiar with the conditions which currently exist; that I have full knowledge of state and Federal laws applicable to this operation; that the statements made in this APD package are, to the best of my knowledge, true and correct; and that the work associated with the operations proposed herein will be performed in conformity with this APD package and the terms and conditions under which it is approved. I also certify that I, or the company I represent, am responsible for the operations conducted under this application. These statements are subject to the provisions of 18 U.S.C. 1001 for the filing of false statements.

NAME: Leslie Reeves

Signed on: 10/15/2019

Title: Advisor Regulatory

Street Address: 5 Greenway Plaza, Suite 110

City: Houston

State: TX

Zip: 77046

Phone: (713)497-2492

Email address: Leslie_Reeves@oxy.com

Field Representative

Representative Name: Mike Wilson

Street Address:

City:

State:

Zip:

Phone: (575)631-6618

Email address: Michael_Wilson@oxy.com



APD ID: 10400048941

Submission Date: 10/15/2019

Highlighted data
reflects the most
recent changes

Operator Name: OXY USA INCORPORATED

Well Name: LOST TANK 30-19 FEDERAL COM

Well Number: 12H

[Show Final Text](#)

Well Type: OIL WELL

Well Work Type: Drill

Section 1 - General

APD ID: 10400048941

Tie to previous NOS? N

Submission Date: 10/15/2019

BLM Office: CARLSBAD

User: Leslie Reeves

Title: Advisor Regulatory

Federal/Indian APD: FED

Is the first lease penetrated for production Federal or Indian? FED

Lease number: NMNM090587

Lease Acres: 343.55

Surface access agreement in place?

Allotted?

Reservation:

Agreement in place? NO

Federal or Indian agreement:

Agreement number:

Agreement name:

Keep application confidential? Y

Permitting Agent? NO

APD Operator: OXY USA INCORPORATED

Operator letter of designation:

Operator Info

Operator Organization Name: OXY USA INCORPORATED

Operator Address: 5 Greenway Plaza, Suite 110

Zip: 77046

Operator PO Box:

Operator City: Houston

State: TX

Operator Phone: (713)366-5716

Operator Internet Address:

Section 2 - Well Information

Well in Master Development Plan? NO

Master Development Plan name:

Well in Master SUPO? NO

Master SUPO name:

Well in Master Drilling Plan? NO

Master Drilling Plan name:

Well Name: LOST TANK 30-19 FEDERAL COM

Well Number: 12H

Well API Number:

Field/Pool or Exploratory? Field and Pool

Field Name: BILBREY BASIN,
BONE SPRING

Pool Name: BILBREY BASIN,
BONE SPRING

Is the proposed well in an area containing other mineral resources? NATURAL GAS,OIL

Operator Name: OXY USA INCORPORATED

Well Name: LOST TANK 30-19 FEDERAL COM

Well Number: 12H

Is the proposed well in an area containing other mineral resources? NATURAL GAS,OIL

Is the proposed well in a Helium production area? N

Use Existing Well Pad? N

New surface disturbance?

Type of Well Pad: MULTIPLE WELL

Multiple Well Pad Name: LOST TANK 30-19 FEDERAL COM

Number: 2H, 12H, 13H, 21H, 22H, 23H & 42H

Well Class: HORIZONTAL

Number of Legs: 1

Well Work Type: Drill

Well Type: OIL WELL

Describe Well Type:

Well sub-Type: INFILL

Describe sub-type:

Distance to town: 23 Miles

Distance to nearest well: 35 FT

Distance to lease line: 20 FT

Reservoir well spacing assigned acres Measurement: 640 Acres

Well plat: LostTank30_19FdCom12H_C102_20191015134623.pdf

LostTank30_19FdCom12H_Supplemental_20191015134634.pdf

LostTank30_19FdCom12H_SitePlan_20191015134649.pdf

Well work start Date: 10/01/2020

Duration: 45 DAYS

Section 3 - Well Location Table

Survey Type: RECTANGULAR

Describe Survey Type:

Datum: NAD83

Vertical Datum: NAVD88

Survey number:

Reference Datum: GROUND LEVEL

Wellbore	NS-Foot	NS Indicator	EW-Foot	EW Indicator	Twsp	Range	Section	Aliquot/Lot/Tract	Latitude	Longitude	County	State	Meridian	Lease Type	Lease Number	Elevation	MD	TVD	Will this well produce from this lease?
SHL Leg #1	338	FNL	176 2	FW L	22S	32E	19	Aliquot NENW	32.38333 7	- 103.7172 419	LEA	NEW MEXI CO	NEW MEXI CO	F	NMNM 090587	361 4	0	0	N
KOP Leg #1	50	FNL	134 0	FW L	22S	32E	19	Lot 1	32.38412 37	- 103.7186 071	LEA	NEW MEXI CO	NEW MEXI CO	F	NMNM 090587	- 563 2	964 1	924 6	N

Operator Name: OXY USA INCORPORATED

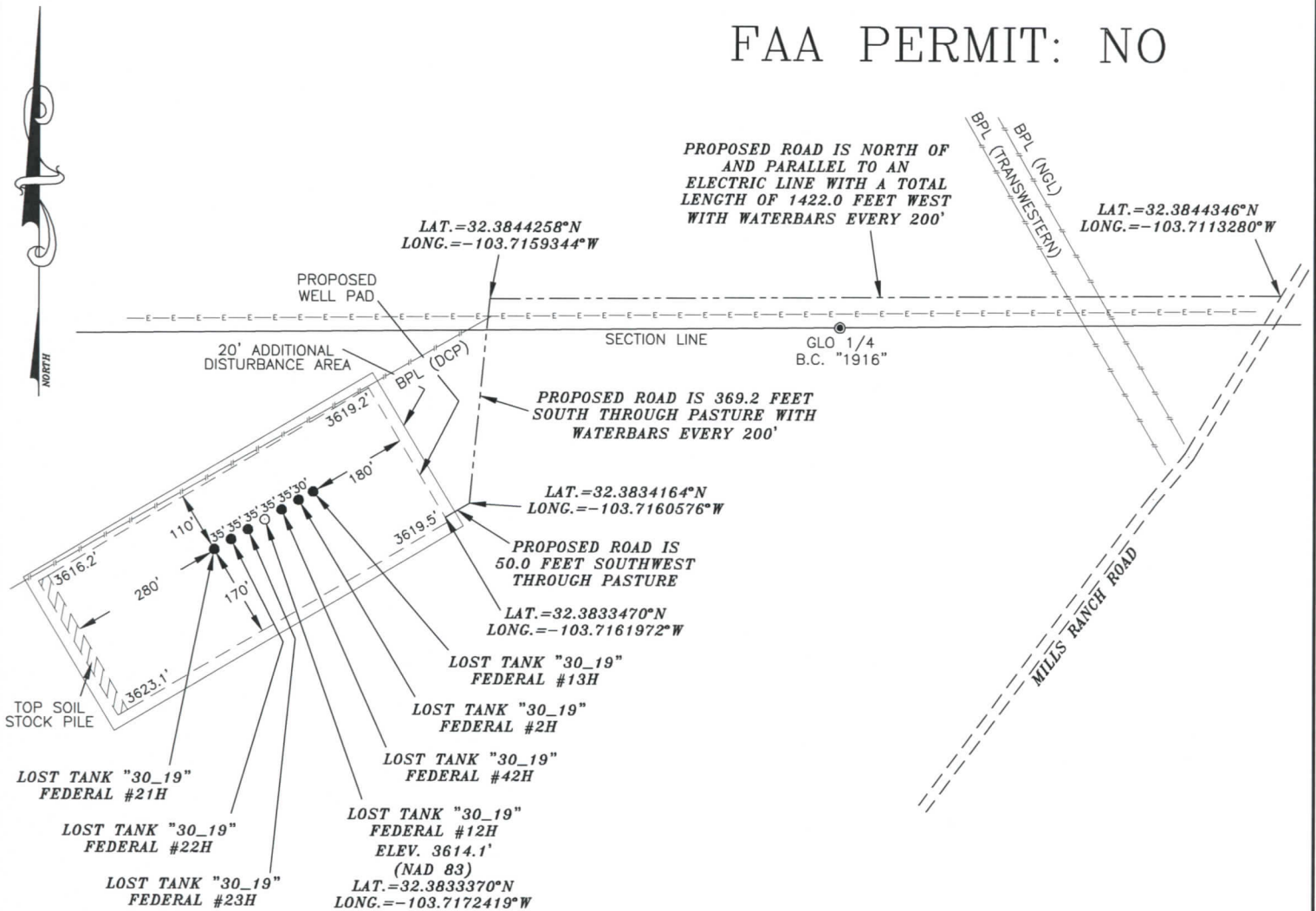
Well Name: LOST TANK 30-19 FEDERAL COM

Well Number: 12H

Wellbore	NS-Foot	NS Indicator	EW-Foot	EW Indicator	Twsp	Range	Section	Aliquot/Lot/Tract	Latitude	Longitude	County	State	Meridian	Lease Type	Lease Number	Elevation	MD	TVD	Will this well produce from this lease?
PPP Leg #1-1	100	FNL	1340	FWL	22S	32E	19	Lot 1	32.3839863	- 103.718607	LEA	NEW MEXICO	NEW MEXICO	F	NMNM 090587	- 5636	9691	9250	Y
PPP Leg #1-2	1315	FNL	1341	FWL	22S	32E	19	Lot 2	32.380648	- 103.718605	LEA	NEW MEXICO	NEW MEXICO	F	FEE	- 5637	10911	9251	Y
PPP Leg #1-3	2635	FNL	1342	FWL	22S	32E	19	Lot 3	32.37702	- 103.718603	LEA	NEW MEXICO	NEW MEXICO	F	NMNM 090587	- 5637	12230	9251	Y
PPP Leg #1-4	7	FNL	1344	FWL	22S	32E	30	Lot 1	32.369765	- 103.718598	LEA	NEW MEXICO	NEW MEXICO	F	NMNM 106915	- 5637	14870	9251	Y
EXIT Leg #1	100	FSL	1340	FWL	22S	32E	30	Lot 4	32.3554977	- 103.7185892	LEA	NEW MEXICO	NEW MEXICO	F	NMNM 106915	- 5637	20060	9251	Y
BHL Leg #1	20	FSL	1340	FWL	22S	32E	30	Lot 4	32.3552778	- 103.718589	LEA	NEW MEXICO	NEW MEXICO	F	NMNM 106915	- 5637	20141	9251	N

OXY USA INC. LOST TANK "30_19" FEDERAL COM #12H SITE PLAN

FAA PERMIT: NO



SURVEYORS CERTIFICATE

I, TERRY J. ASEL, NEW MEXICO PROFESSIONAL SURVEYOR NO. 15079, DO HEREBY CERTIFY THAT I CONDUCTED AND AM RESPONSIBLE FOR THIS SURVEY, THAT THIS SURVEY IS TRUE AND CORRECT TO THE BEST OF MY KNOWLEDGE AND BELIEF, AND MEETS THE "MINIMUM STANDARDS FOR SURVEYING IN NEW MEXICO" AS ADOPTED BY THE NEW MEXICO STATE BOARD OF REGISTRATION FOR PROFESSIONAL ENGINEERS AND SURVEYORS.

Terry J. Asel 3/29/2019
Terry J. Asel N.M. R.P.L.S. No. 15079

LEGEND

--- DENOTES PROPOSED WELL PAD

--- DENOTES PROPOSED ROAD

▨ DENOTES STOCK PILE AREA

300' 0 300' 600' FEET
SCALE: 1"=300'

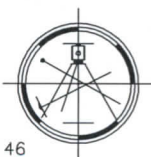
OXY USA INC.

LOST TANK "30_19" FEDERAL COM #12H
LOCATED AT 338' FNL & 1762' FWL IN
SECTION 19, TOWNSHIP 22 SOUTH, RANGE 32
EAST, N.M.P.M., LEA COUNTY, NEW MEXICO

Survey Date: 03/20/19	Sheet 1 of 1 Sheets	
W.O. Number: 190320WL-a	Drawn By: KA	Rev:
Date: 03/25/19	190320WL-a	Scale: 1"=300'

Asel Surveying

P.O. BOX 393 - 310 W. TAYLOR
HOBBS, NEW MEXICO - 575-393-9146



APD ID: 10400048941

Submission Date: 10/15/2019

Highlighted data
reflects the most
recent changes

Operator Name: OXY USA INCORPORATED

Well Name: LOST TANK 30-19 FEDERAL COM

Well Number: 12H

[Show Final Text](#)

Well Type: OIL WELL

Well Work Type: Drill

Section 1 - Geologic Formations

Formation ID	Formation Name	Elevation	True Vertical Depth	Measured Depth	Lithologies	Mineral Resources	Producing Formation
558243	RUSTLER	3614	852	852	ANHYDRITE, DOLOMITE, SHALE	USEABLE WATER	N
558244	SALADO	2468	1146	1146	ANHYDRITE, DOLOMITE, HALITE, SHALE	OTHER : SALT	N
558241	CASTILE	752	2862	2862	ANHYDRITE	OTHER : salt	N
558245	LAMAR	-980	4594	4611	LIMESTONE, SANDSTONE, SILTSTONE	NATURAL GAS, OIL, OTHER : BRINE	N
558246	BELL CANYON	-1058	4672	4691	SANDSTONE, SILTSTONE	NATURAL GAS, OIL, OTHER, USEABLE WATER : BRINE	N
558247	CHERRY CANYON	-1896	5510	5555	SANDSTONE, SILTSTONE	NATURAL GAS, OIL, OTHER : BRINE	N
558248	BRUSHY CANYON	-3120	6734	6816	LIMESTONE, SANDSTONE, SILTSTONE	NATURAL GAS, OIL, OTHER : BRINE	N
558242	BONE SPRING	-4873	8487	8600	LIMESTONE, SANDSTONE, SILTSTONE	NATURAL GAS, OIL	Y

Section 2 - Blowout Prevention

Pressure Rating (PSI): 5M

Rating Depth: 9251

Equipment: 13-5/8" 5/10M Annular, Blind Ram, Double Ram

Requesting Variance? YES

Variance request: Request for the use of a flexible choke line from the BOP to Choke Manifold.

Testing Procedure: OXY will utilize a 5M annular with a 10M BOPE stack. The BOP/BOPE will be tested by an independent service company to 250 psi low and the high pressure indicated above per Onshore Order 2 requirements. The System may be upgraded to a higher pressure but still tested to the working pressure listed in the table above. If the system is upgraded all the components installed will be functional and tested. Pipe rams will be operationally checked each 24 hour period. Blind rams will be operationally checked on each trip out of the hole. These checks will be noted on the daily tour sheets. Other accessories to the BOP equipment will include a Kelly cock and floor safety valve (inside BOP) and choke lines and choke manifold. A multibowl wellhead or a unionized multibowl wellhead system will be employed. The wellhead and connection to the BOPE will meet all API 6A requirements. The BOP will be tested per Onshore Order #2 after installation on the surface casing which will cover testing requirements for a maximum of 30 days. If any seal subject to test pressure is broken the system will be tested. We will test the flange connection of the wellhead with a test port that is directly in the flange. BOP Break Testing Request OXY requests permission to adjust the BOP break testing requirements as per the agreement reached in the OXY/BLM meeting on September 5, 2019. A separate sundry will be sent prior to spud that reflects the pad based break testing plan. BOP break test under the following conditions: - After a full BOP test is conducted - When skidding

Operator Name: OXY USA INCORPORATED

Well Name: LOST TANK 30-19 FEDERAL COM

Well Number: 12H

to drill an intermediate section where ICP is set into the third Bone Spring or shallower. - When skidding to drill a production section that does not penetrate into the third Bone Spring or deeper. If the kill line is broken prior to skid, two tests will be performed. 1. Wellhead flange, co-flex hose, kill line connections and upper pipe rams 2. Wellhead flange, HCR valve, check valve, upper pipe rams If the kill line is not broken prior to skid, only one test will be performed. 1. Wellhead flange, co-flex hose, check valve, upper pipe rams

Choke Diagram Attachment:

LostTank30_19FdCom12H_ChokeManifold_20191015140459.pdf

BOP Diagram Attachment:

LostTank30_19FdCom12H_FlexHoseCert_20191015140506.pdf

LostTank30_19FdCom12H_BOP_20191015140512.pdf

Section 3 - Casing

Casing ID	String Type	Hole Size	Csg Size	Condition	Standard	Tapered String	Top Set MD	Bottom Set MD	Top Set TVD	Bottom Set TVD	Top Set MSL	Bottom Set MSL	Calculated casing length MD	Grade	Weight	Joint Type	Collapse SF	Burst SF	Joint SF Type	Joint SF	Body SF Type	Body SF
1	SURFACE	17.5	13.375	NEW	API	N	0	902	0	902	3614	2712	902	J-55	54.5	BUTT	1.125	1.2	BUOY	1.4	BUOY	1.4
2	INTERMEDIATE	12.25	9.625	NEW	API	N	0	5560	0	5515		-1901	5560	J-55	36	BUTT	1.125	1.2	BUOY	1.4	BUOY	1.4
3	PRODUCTION	8.5	5.5	NEW	API	N	0	20141	0	9251		-5637	20141	P-110	20	OTHER - DQX/SFTORQ/DQWTORQ	1.125	1.2	BUOY	1.4	BUOY	1.4

Casing Attachments

Operator Name: OXY USA INCORPORATED

Well Name: LOST TANK 30-19 FEDERAL COM

Well Number: 12H

Casing Attachments

Casing ID: 1 **String Type:** SURFACE

Inspection Document:

Spec Document:

Tapered String Spec:

Casing Design Assumptions and Worksheet(s):

LostTank30_19FdCom12H_CsgCriteria_20191015140559.pdf

Casing ID: 2 **String Type:** INTERMEDIATE

Inspection Document:

Spec Document:

Tapered String Spec:

Casing Design Assumptions and Worksheet(s):

LostTank30_19FdCom12H_CsgCriteria_20191015140648.pdf

Casing ID: 3 **String Type:** PRODUCTION

Inspection Document:

Spec Document:

Tapered String Spec:

Casing Design Assumptions and Worksheet(s):

LostTank30_19FdCom12H_CsgCriteria_20191015140719.pdf

LostTank30_19FdCom12H_5.500in_x_20_20191015140723.00

LostTank30_19FdCom12H_5.500in_x_20_20191015140727.00

LostTank30_19FdCom12H_5.500in_x_20_20191015140732.00

Operator Name: OXY USA INCORPORATED

Well Name: LOST TANK 30-19 FEDERAL COM

Well Number: 12H

Section 4 - Cement

String Type	Lead/Tail	Stage Tool Depth	Top MD	Bottom MD	Quantity(sx)	Yield	Density	Cu Ft	Excess%	Cement type	Additives
SURFACE	Lead		0	902	954	1.33	14.8	1269	100	CI C	Accelerator

INTERMEDIATE	Lead		0	5060	1319	1.73	12.9	2282	50	Pozzolan/C	Retarder
INTERMEDIATE	Tail		5060	5560	156	1.33	14.8	207	20	CI C	Accelerator
PRODUCTION	Lead		5060	8435	413	2.24	11.9	925	20	CI H	Retarder, Dispersant, Salt
PRODUCTION	Tail		8435	20140	2243	1.38	13.2	3095	15	CI H	Retarder, Dispersant, Salt

Section 5 - Circulating Medium

Mud System Type: Closed

Will an air or gas system be Used? NO

Description of the equipment for the circulating system in accordance with Onshore Order #2:

Diagram of the equipment for the circulating system in accordance with Onshore Order #2:

Describe what will be on location to control well or mitigate other conditions: Sufficient mud materials to maintain mud properties and meet minimum lost circulation and weight increase requirements. The following is a general list of products: Barite, Bentonite, Gypsum, Lime, Soda Ash, Caustic Soda, Nut Plug, Cedar Fiber, Cotton Seed Hulls, Drilling Paper, Salt Water Clay, CaCl2.

Describe the mud monitoring system utilized: PVT/MD Totco/Visual Monitoring

Circulating Medium Table

Top Depth	Bottom Depth	Mud Type	Min Weight (lbs/gal)	Max Weight (lbs/gal)	Density (lbs/cu ft)	Gel Strength (lbs/100 sqft)	PH	Viscosity (CP)	Salinity (ppm)	Filtration (cc)	Additional Characteristics
-----------	--------------	----------	----------------------	----------------------	---------------------	-----------------------------	----	----------------	----------------	-----------------	----------------------------

Operator Name: OXY USA INCORPORATED

Well Name: LOST TANK 30-19 FEDERAL COM

Well Number: 12H

Top Depth	Bottom Depth	Mud Type	Min Weight (lbs/gal)	Max Weight (lbs/gal)	Density (lbs/cu ft)	Gel Strength (lbs/100 sqft)	PH	Viscosity (CP)	Salinity (ppm)	Filtration (cc)	Additional Characteristics
902	5560	OTHER : Saturated Brine Based Mud	9.8	10							
5560	2014 1	OTHER : Saturate Brine- Based and/or Oil-Based Mud	8	9.6							
0	902	WATER-BASED MUD	8.6	8.8							

Section 6 - Test, Logging, Coring

List of production tests including testing procedures, equipment and safety measures:

GR from TD to surface (horizontal well – vertical portion of hole). Mud Log from intermediate shoe to TD.

List of open and cased hole logs run in the well:

GAMMA RAY LOG,MUD LOG/GEOLOGIC LITHOLOGY LOG,MUD LOG/GEOLOGICAL LITHOLOGY LOG,

Coring operation description for the well:

No coring is planned at this time.

Section 7 - Pressure

Anticipated Bottom Hole Pressure: 4618

Anticipated Surface Pressure: 2582

Anticipated Bottom Hole Temperature(F): 154

Anticipated abnormal pressures, temperatures, or potential geologic hazards? NO

Describe:

Contingency Plans geohazards description:

Contingency Plans geohazards attachment:

Hydrogen Sulfide drilling operations plan required? YES

Hydrogen sulfide drilling operations plan:

LostTank30_19FdCom12H_H2S1_20191015141123.pdf

LostTank30_19FdCom12H_H2S2_20191015141129.pdf

LostTank30_19FdCom12H_H2SEmerCont_20191015141136.pdf

Operator Name: OXY USA INCORPORATED

Well Name: LOST TANK 30-19 FEDERAL COM

Well Number: 12H

Section 8 - Other Information

Proposed horizontal/directional/multi-lateral plan submission:

LostTank30_19FdCom12H_DirectPlan_20191015141153.pdf

LostTank30_19FdCom12H_DirectPlot_20191015141202.pdf

Other proposed operations facets description:

OXY requests the option to set casing shallower yet still below the salts if losses or hole conditions require this. Cement volumes may be adjusted if casing is set shallower and a DV tool may be run in case hole conditions merit pumping a second stage cement job to comply with permitted top of cement. If cement circulated to surface during first stage we will drop a cancelation cone and not pump the second stage.

OXY requests a variance to cement the 9-5/8 and/or 7-5/8 intermediate casing strings offline, see attached in drill plan for additional information.

OXY requests the option to run production casing with DQX, SF TORQ and/or DQW TORQ connections to accommodate hole conditions or drilling operations.

Annular Clearance Variance Request - As per the agreement reached in the Oxy/BLM meeting on Feb 22, 2018, Oxy requests permission to allow deviation from the 0.422 annular clearance requirement from Onshore Order #2 under the following conditions:

1. Annular clearance to meet or exceed 0.422 between intermediate casing ID and production casing coupling only on the first 500 overlap between both casings.
2. Annular clearance less than 0.422 is acceptable for the curve and lateral portions of the production open hole section.

Well will be drilled with a walking/skidding operation. Plan to drill the multiple well pad in batch by section: all surface sections, intermediate sections and production sections. The wellhead will be secured with a night cap whenever the rig is not over the well.

OXY requests the option to contract a Surface Rig to drill, set surface casing, and cement for this well. If the timing between rigs is such that OXY would not be able to preset surface, the Primary Rig will MIRU and drill the well in its entirety per the APD. Please see the attached document for information on the spudder rig.

Other proposed operations facets attachment:

LostTank30_19FdCom12H_DrillPlan_20191015141225.pdf

LostTank30_19FdCom12H_SpudRigData_20191015141233.pdf

Other Variance attachment:

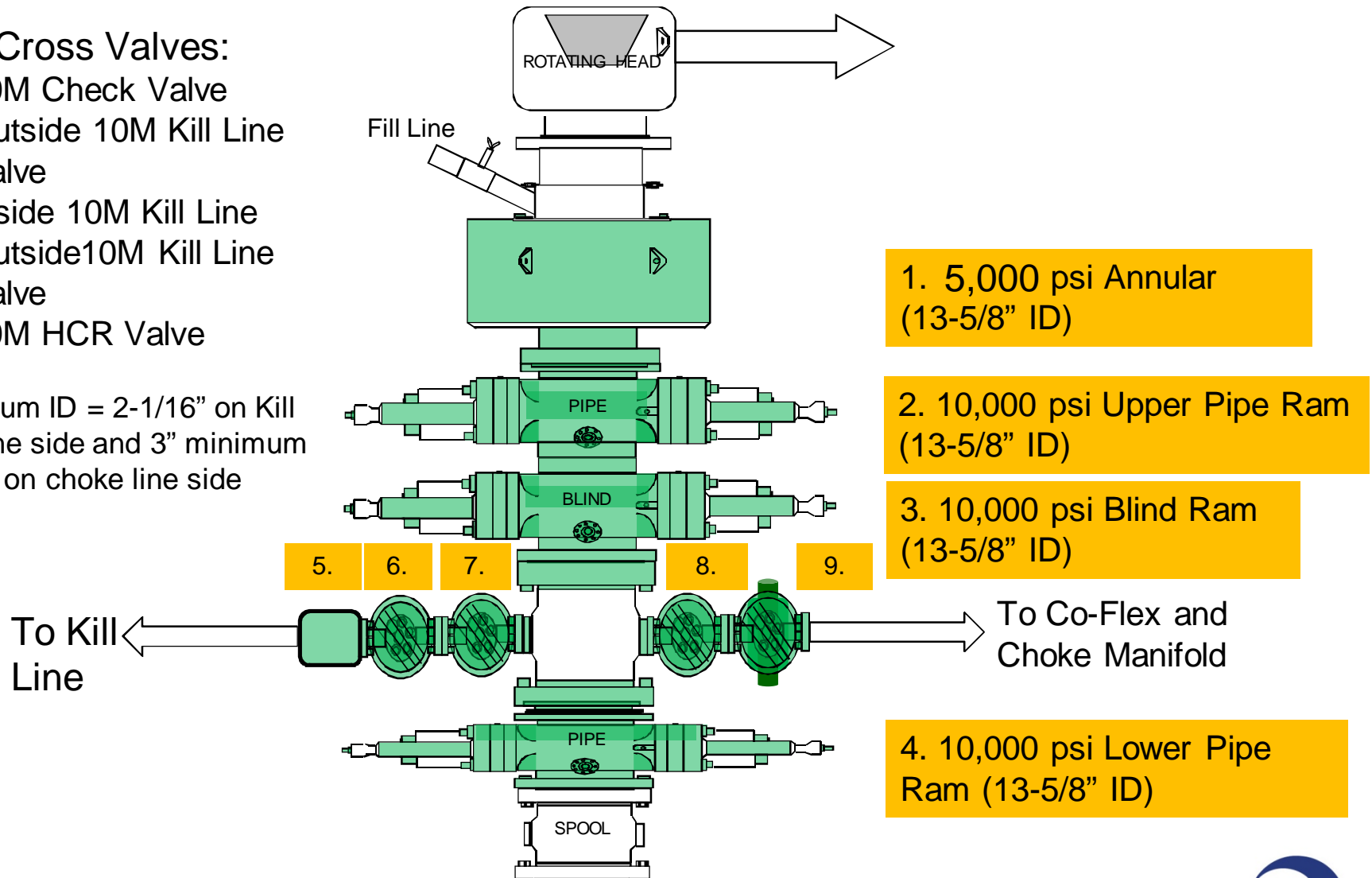
LostTank30_19FdCom1H_OfflineCmtgDetail_20190830125441.pdf

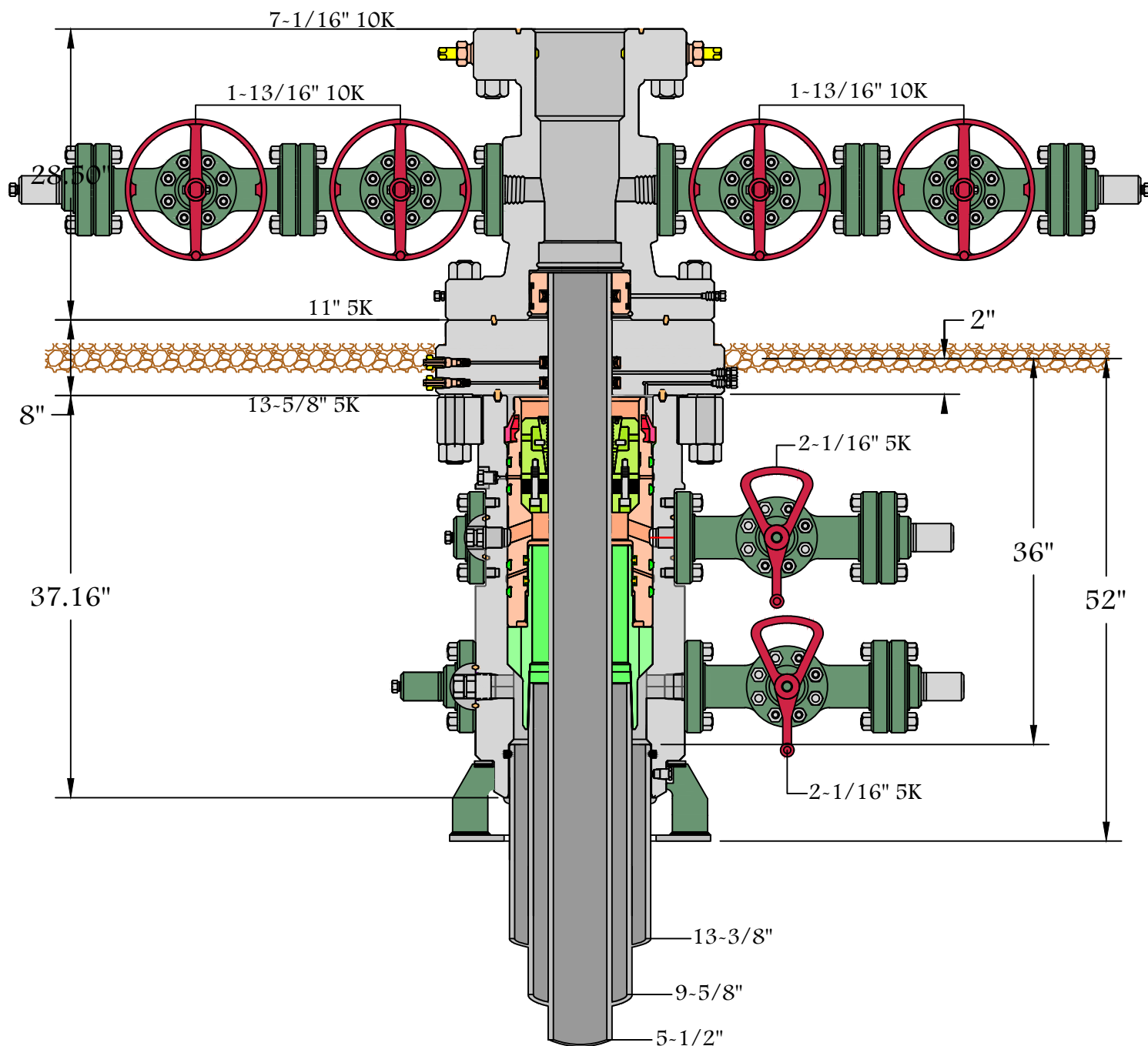
5/10M BOP Stack

Mud Cross Valves:

5. 10M Check Valve
6. Outside 10M Kill Line Valve
7. Inside 10M Kill Line Valve
8. Outside 10M Kill Line Valve
9. 10M HCR Valve

*Minimum ID = 2-1/16" on Kill Line side and 3" minimum ID on choke line side





13-5/8" 5K MN-DS



Name: Brandon	Date: 5-10-17	Working Pressure:	# 1505172
---------------	---------------	-------------------	-----------

OXY

PRD NM DIRECTIONAL PLANS (NAD 1983)

LOST TANK 30-19 FED

Lost Tank 30_19 Federal Com 12H

Wellbore #1

Plan: Permitting Plan

Standard Planning Report

18 April, 2019

Oxy

Planning Report

Database:	HOPSPP	Local Co-ordinate Reference:	Well Lost Tank 30_19 Federal Com 12H
Company:	ENGINEERING DESIGNS	TVD Reference:	RKB=26.5' @ 3640.60ft
Project:	PRD NM DIRECTIONAL PLANS (NAD 1983)	MD Reference:	RKB=26.5' @ 3640.60ft
Site:	LOST TANK 30-19 FED	North Reference:	Grid
Well:	Lost Tank 30_19 Federal Com 12H	Survey Calculation Method:	Minimum Curvature
Wellbore:	Wellbore #1		
Design:	Permitting Plan		

Project	PRD NM DIRECTIONAL PLANS (NAD 1983)		
Map System:	US State Plane 1983	System Datum:	Mean Sea Level
Geo Datum:	North American Datum 1983		
Map Zone:	New Mexico Eastern Zone		Using geodetic scale factor

Site		LOST TANK 30-19 FED				
Site Position:		Northing:	503,826.03 usft	Latitude:	32° 22' 22.416967 N	
From:	Lat/Long	Easting:	0.00 usft	Longitude:	106° 5' 11.999469 W	
Position Uncertainty:		50.00 ft	Slot Radius:	13.200 in	Grid Convergence:	-0.94 °

Well	Lost Tank 30_19 Federal Com 12H					
Well Position	+N/-S	-88.86 ft	Northing:	503,737.15 usft	Latitude:	32° 23' 0.013037 N
	+E/-W	731,343.69 ft	Easting:	731,521.21 usft	Longitude:	103° 43' 2.070899 W
Position Uncertainty		2.00 ft	Wellhead Elevation:	0.00 ft	Ground Level:	3,614.10 ft

Wellbore	Wellbore #1				
Magnetics	Model Name	Sample Date	Declination (°)	Dip Angle (°)	Field Strength (nT)
	HDGM	4/18/2019	6.80	60.13	48,077

Design	Permitting Plan			
Audit Notes:				
Version:	Phase:	PROTOTYPE	Tie On Depth:	0.00
Vertical Section:	Depth From (TVD) (ft)	+N/-S (ft)	+E/-W (ft)	Direction (°)
	0.00	0.00	0.00	182.00

Plan Sections										
Measured Depth (ft)	Inclination (°)	Azimuth (°)	Vertical Depth (ft)	+N/-S (ft)	+E/-W (ft)	Dogleg Rate (°/100ft)	Build Rate (°/100ft)	Turn Rate (°/100ft)	TFO (°)	Target
0.00	0.00	0.00	0.00	0.00	0.00	0.00	0.00	0.00	0.00	
3,578.00	0.00	0.00	3,578.00	0.00	0.00	0.00	0.00	0.00	0.00	
4,278.12	14.00	335.97	4,271.17	77.75	-34.66	2.00	2.00	0.00	335.97	
7,565.90	14.00	335.97	7,461.26	804.35	-358.55	0.00	0.00	0.00	0.00	
8,935.68	14.00	179.64	8,816.25	789.74	-426.27	2.00	0.00	-11.41	-167.82	
9,695.68	90.00	179.64	9,250.60	233.81	-422.78	10.00	10.00	0.00	0.00	FTP (Lost Tank
20,140.48	90.00	179.64	9,250.60	-10,210.79	-357.23	0.00	0.00	0.00	0.00	PBHL (Lost Tank

Oxy Planning Report

Database:	HOPSPP	Local Co-ordinate Reference:	Well Lost Tank 30_19 Federal Com 12H
Company:	ENGINEERING DESIGNS	TVD Reference:	RKB=26.5' @ 3640.60ft
Project:	PRD NM DIRECTIONAL PLANS (NAD 1983)	MD Reference:	RKB=26.5' @ 3640.60ft
Site:	LOST TANK 30-19 FED	North Reference:	Grid
Well:	Lost Tank 30_19 Federal Com 12H	Survey Calculation Method:	Minimum Curvature
Wellbore:	Wellbore #1		
Design:	Permitting Plan		

Planned Survey									
Measured Depth (ft)	Inclination (°)	Azimuth (°)	Vertical Depth (ft)	+N/-S (ft)	+E/-W (ft)	Vertical Section (ft)	Dogleg Rate (°/100ft)	Build Rate (°/100ft)	Turn Rate (°/100ft)
0.00	0.00	0.00	0.00	0.00	0.00	0.00	0.00	0.00	0.00
100.00	0.00	0.00	100.00	0.00	0.00	0.00	0.00	0.00	0.00
200.00	0.00	0.00	200.00	0.00	0.00	0.00	0.00	0.00	0.00
300.00	0.00	0.00	300.00	0.00	0.00	0.00	0.00	0.00	0.00
400.00	0.00	0.00	400.00	0.00	0.00	0.00	0.00	0.00	0.00
500.00	0.00	0.00	500.00	0.00	0.00	0.00	0.00	0.00	0.00
600.00	0.00	0.00	600.00	0.00	0.00	0.00	0.00	0.00	0.00
700.00	0.00	0.00	700.00	0.00	0.00	0.00	0.00	0.00	0.00
800.00	0.00	0.00	800.00	0.00	0.00	0.00	0.00	0.00	0.00
900.00	0.00	0.00	900.00	0.00	0.00	0.00	0.00	0.00	0.00
1,000.00	0.00	0.00	1,000.00	0.00	0.00	0.00	0.00	0.00	0.00
1,100.00	0.00	0.00	1,100.00	0.00	0.00	0.00	0.00	0.00	0.00
1,200.00	0.00	0.00	1,200.00	0.00	0.00	0.00	0.00	0.00	0.00
1,300.00	0.00	0.00	1,300.00	0.00	0.00	0.00	0.00	0.00	0.00
1,400.00	0.00	0.00	1,400.00	0.00	0.00	0.00	0.00	0.00	0.00
1,500.00	0.00	0.00	1,500.00	0.00	0.00	0.00	0.00	0.00	0.00
1,600.00	0.00	0.00	1,600.00	0.00	0.00	0.00	0.00	0.00	0.00
1,700.00	0.00	0.00	1,700.00	0.00	0.00	0.00	0.00	0.00	0.00
1,800.00	0.00	0.00	1,800.00	0.00	0.00	0.00	0.00	0.00	0.00
1,900.00	0.00	0.00	1,900.00	0.00	0.00	0.00	0.00	0.00	0.00
2,000.00	0.00	0.00	2,000.00	0.00	0.00	0.00	0.00	0.00	0.00
2,100.00	0.00	0.00	2,100.00	0.00	0.00	0.00	0.00	0.00	0.00
2,200.00	0.00	0.00	2,200.00	0.00	0.00	0.00	0.00	0.00	0.00
2,300.00	0.00	0.00	2,300.00	0.00	0.00	0.00	0.00	0.00	0.00
2,400.00	0.00	0.00	2,400.00	0.00	0.00	0.00	0.00	0.00	0.00
2,500.00	0.00	0.00	2,500.00	0.00	0.00	0.00	0.00	0.00	0.00
2,600.00	0.00	0.00	2,600.00	0.00	0.00	0.00	0.00	0.00	0.00
2,700.00	0.00	0.00	2,700.00	0.00	0.00	0.00	0.00	0.00	0.00
2,800.00	0.00	0.00	2,800.00	0.00	0.00	0.00	0.00	0.00	0.00
2,900.00	0.00	0.00	2,900.00	0.00	0.00	0.00	0.00	0.00	0.00
3,000.00	0.00	0.00	3,000.00	0.00	0.00	0.00	0.00	0.00	0.00
3,100.00	0.00	0.00	3,100.00	0.00	0.00	0.00	0.00	0.00	0.00
3,200.00	0.00	0.00	3,200.00	0.00	0.00	0.00	0.00	0.00	0.00
3,300.00	0.00	0.00	3,300.00	0.00	0.00	0.00	0.00	0.00	0.00
3,400.00	0.00	0.00	3,400.00	0.00	0.00	0.00	0.00	0.00	0.00
3,500.00	0.00	0.00	3,500.00	0.00	0.00	0.00	0.00	0.00	0.00
3,578.00	0.00	0.00	3,578.00	0.00	0.00	0.00	0.00	0.00	0.00
3,600.00	0.44	335.97	3,600.00	0.08	-0.03	-0.08	2.00	2.00	0.00
3,700.00	2.44	335.97	3,699.96	2.37	-1.06	-2.33	2.00	2.00	0.00
3,800.00	4.44	335.97	3,799.78	7.85	-3.50	-7.73	2.00	2.00	0.00
3,900.00	6.44	335.97	3,899.32	16.51	-7.36	-16.24	2.00	2.00	0.00
4,000.00	8.44	335.97	3,998.48	28.34	-12.63	-27.88	2.00	2.00	0.00
4,100.00	10.44	335.97	4,097.12	43.32	-19.31	-42.62	2.00	2.00	0.00
4,200.00	12.44	335.97	4,195.12	61.43	-27.38	-60.44	2.00	2.00	0.00
4,278.12	14.00	335.97	4,271.17	77.75	-34.66	-76.49	2.00	2.00	0.00
4,300.00	14.00	335.97	4,292.40	82.59	-36.81	-81.25	0.00	0.00	0.00
4,400.00	14.00	335.97	4,389.43	104.69	-46.66	-102.99	0.00	0.00	0.00
4,500.00	14.00	335.97	4,486.46	126.79	-56.52	-124.73	0.00	0.00	0.00
4,600.00	14.00	335.97	4,583.49	148.89	-66.37	-146.47	0.00	0.00	0.00
4,700.00	14.00	335.97	4,680.52	170.99	-76.22	-168.22	0.00	0.00	0.00
4,800.00	14.00	335.97	4,777.54	193.09	-86.07	-189.96	0.00	0.00	0.00
4,900.00	14.00	335.97	4,874.57	215.19	-95.92	-211.70	0.00	0.00	0.00
5,000.00	14.00	335.97	4,971.60	237.29	-105.77	-233.44	0.00	0.00	0.00
5,100.00	14.00	335.97	5,068.63	259.39	-115.62	-255.18	0.00	0.00	0.00

Oxy

Planning Report

Database:	HOPSPP	Local Co-ordinate Reference:	Well Lost Tank 30_19 Federal Com 12H
Company:	ENGINEERING DESIGNS	TVD Reference:	RKB=26.5' @ 3640.60ft
Project:	PRD NM DIRECTIONAL PLANS (NAD 1983)	MD Reference:	RKB=26.5' @ 3640.60ft
Site:	LOST TANK 30-19 FED	North Reference:	Grid
Well:	Lost Tank 30_19 Federal Com 12H	Survey Calculation Method:	Minimum Curvature
Wellbore:	Wellbore #1		
Design:	Permitting Plan		

Planned Survey									
Measured Depth (ft)	Inclination (°)	Azimuth (°)	Vertical Depth (ft)	+N/-S (ft)	+E/-W (ft)	Vertical Section (ft)	Dogleg Rate (°/100ft)	Build Rate (°/100ft)	Turn Rate (°/100ft)
5,200.00	14.00	335.97	5,165.66	281.48	-125.47	-276.93	0.00	0.00	0.00
5,300.00	14.00	335.97	5,262.69	303.58	-135.33	-298.67	0.00	0.00	0.00
5,400.00	14.00	335.97	5,359.72	325.68	-145.18	-320.41	0.00	0.00	0.00
5,500.00	14.00	335.97	5,456.74	347.78	-155.03	-342.15	0.00	0.00	0.00
5,600.00	14.00	335.97	5,553.77	369.88	-164.88	-363.89	0.00	0.00	0.00
5,700.00	14.00	335.97	5,650.80	391.98	-174.73	-385.64	0.00	0.00	0.00
5,800.00	14.00	335.97	5,747.83	414.08	-184.58	-407.38	0.00	0.00	0.00
5,900.00	14.00	335.97	5,844.86	436.18	-194.43	-429.12	0.00	0.00	0.00
6,000.00	14.00	335.97	5,941.89	458.28	-204.28	-450.86	0.00	0.00	0.00
6,100.00	14.00	335.97	6,038.92	480.38	-214.14	-472.60	0.00	0.00	0.00
6,200.00	14.00	335.97	6,135.94	502.48	-223.99	-494.35	0.00	0.00	0.00
6,300.00	14.00	335.97	6,232.97	524.58	-233.84	-516.09	0.00	0.00	0.00
6,400.00	14.00	335.97	6,330.00	546.68	-243.69	-537.83	0.00	0.00	0.00
6,500.00	14.00	335.97	6,427.03	568.78	-253.54	-559.57	0.00	0.00	0.00
6,600.00	14.00	335.97	6,524.06	590.88	-263.39	-581.31	0.00	0.00	0.00
6,700.00	14.00	335.97	6,621.09	612.98	-273.24	-603.06	0.00	0.00	0.00
6,800.00	14.00	335.97	6,718.12	635.08	-283.09	-624.80	0.00	0.00	0.00
6,900.00	14.00	335.97	6,815.15	657.18	-292.95	-646.54	0.00	0.00	0.00
7,000.00	14.00	335.97	6,912.17	679.28	-302.80	-668.28	0.00	0.00	0.00
7,100.00	14.00	335.97	7,009.20	701.38	-312.65	-690.02	0.00	0.00	0.00
7,200.00	14.00	335.97	7,106.23	723.48	-322.50	-711.76	0.00	0.00	0.00
7,300.00	14.00	335.97	7,203.26	745.58	-332.35	-733.51	0.00	0.00	0.00
7,400.00	14.00	335.97	7,300.29	767.68	-342.20	-755.25	0.00	0.00	0.00
7,500.00	14.00	335.97	7,397.32	789.78	-352.05	-776.99	0.00	0.00	0.00
7,565.90	14.00	335.97	7,461.26	804.35	-358.55	-791.32	0.00	0.00	0.00
7,600.00	13.34	335.35	7,494.39	811.69	-361.87	-798.54	2.00	-1.95	-1.83
7,700.00	11.39	333.11	7,592.07	830.98	-371.14	-817.50	2.00	-1.94	-2.24
7,800.00	9.48	329.97	7,690.41	846.92	-379.73	-833.13	2.00	-1.92	-3.14
7,900.00	7.60	325.27	7,789.30	859.48	-387.62	-845.41	2.00	-1.88	-4.69
8,000.00	5.81	317.62	7,888.61	868.66	-394.80	-854.32	2.00	-1.79	-7.65
8,100.00	4.20	303.71	7,988.23	874.43	-401.26	-859.87	2.00	-1.60	-13.91
8,200.00	3.10	276.97	8,088.04	876.79	-406.99	-862.03	2.00	-1.10	-26.74
8,300.00	3.09	239.23	8,187.90	875.74	-411.98	-860.80	2.00	-0.01	-37.74
8,400.00	4.18	212.23	8,287.70	871.28	-416.24	-856.20	2.00	1.09	-27.01
8,500.00	5.78	198.16	8,387.33	863.42	-419.75	-848.21	2.00	1.60	-14.06
8,600.00	7.57	190.44	8,486.65	852.16	-422.52	-836.86	2.00	1.79	-7.72
8,700.00	9.44	185.71	8,585.54	837.51	-424.53	-822.16	2.00	1.88	-4.73
8,800.00	11.36	182.55	8,683.90	819.51	-425.78	-804.12	2.00	1.92	-3.16
8,900.00	13.30	180.29	8,781.59	798.16	-426.28	-782.77	2.00	1.94	-2.25
8,935.68	14.00	179.64	8,816.25	789.74	-426.27	-774.35	2.00	1.95	-1.83
9,000.00	20.43	179.64	8,877.66	770.71	-426.15	-755.34	10.00	10.00	0.00
9,100.00	30.43	179.64	8,967.86	727.82	-425.88	-712.49	10.00	10.00	0.00
9,200.00	40.43	179.64	9,049.23	669.92	-425.52	-654.64	10.00	10.00	0.00
9,300.00	50.43	179.64	9,119.32	598.77	-425.07	-583.54	10.00	10.00	0.00
9,400.00	60.43	179.64	9,175.99	516.53	-424.56	-501.37	10.00	10.00	0.00
9,500.00	70.43	179.64	9,217.51	425.70	-423.99	-410.62	10.00	10.00	0.00
9,600.00	80.43	179.64	9,242.63	329.04	-423.38	-314.04	10.00	10.00	0.00
9,695.68	90.00	179.64	9,250.60	233.81	-422.78	-218.89	10.00	10.00	0.00
9,700.00	90.00	179.64	9,250.60	229.49	-422.75	-214.57	0.00	0.00	0.00
9,800.00	90.00	179.64	9,250.60	129.49	-422.13	-114.65	0.00	0.00	0.00
9,900.00	90.00	179.64	9,250.60	29.49	-421.50	-14.74	0.00	0.00	0.00
10,000.00	90.00	179.64	9,250.60	-70.51	-420.87	85.18	0.00	0.00	0.00
10,100.00	90.00	179.64	9,250.60	-170.50	-420.24	185.09	0.00	0.00	0.00
10,200.00	90.00	179.64	9,250.60	-270.50	-419.62	285.01	0.00	0.00	0.00

Oxy

Planning Report

Database:	HOPSPP	Local Co-ordinate Reference:	Well Lost Tank 30_19 Federal Com 12H
Company:	ENGINEERING DESIGNS	TVD Reference:	RKB=26.5' @ 3640.60ft
Project:	PRD NM DIRECTIONAL PLANS (NAD 1983)	MD Reference:	RKB=26.5' @ 3640.60ft
Site:	LOST TANK 30-19 FED	North Reference:	Grid
Well:	Lost Tank 30_19 Federal Com 12H	Survey Calculation Method:	Minimum Curvature
Wellbore:	Wellbore #1		
Design:	Permitting Plan		

Planned Survey									
Measured Depth (ft)	Inclination (°)	Azimuth (°)	Vertical Depth (ft)	+N/-S (ft)	+E/-W (ft)	Vertical Section (ft)	Dogleg Rate (°/100ft)	Build Rate (°/100ft)	Turn Rate (°/100ft)
10,300.00	90.00	179.64	9,250.60	-370.50	-418.99	384.92	0.00	0.00	0.00
10,400.00	90.00	179.64	9,250.60	-470.50	-418.36	484.84	0.00	0.00	0.00
10,500.00	90.00	179.64	9,250.60	-570.50	-417.73	584.75	0.00	0.00	0.00
10,600.00	90.00	179.64	9,250.60	-670.49	-417.11	684.67	0.00	0.00	0.00
10,700.00	90.00	179.64	9,250.60	-770.49	-416.48	784.58	0.00	0.00	0.00
10,800.00	90.00	179.64	9,250.60	-870.49	-415.85	884.50	0.00	0.00	0.00
10,900.00	90.00	179.64	9,250.60	-970.49	-415.22	984.41	0.00	0.00	0.00
11,000.00	90.00	179.64	9,250.60	-1,070.49	-414.60	1,084.33	0.00	0.00	0.00
11,100.00	90.00	179.64	9,250.60	-1,170.48	-413.97	1,184.24	0.00	0.00	0.00
11,200.00	90.00	179.64	9,250.60	-1,270.48	-413.34	1,284.16	0.00	0.00	0.00
11,300.00	90.00	179.64	9,250.60	-1,370.48	-412.71	1,384.07	0.00	0.00	0.00
11,400.00	90.00	179.64	9,250.60	-1,470.48	-412.09	1,483.99	0.00	0.00	0.00
11,500.00	90.00	179.64	9,250.60	-1,570.48	-411.46	1,583.90	0.00	0.00	0.00
11,600.00	90.00	179.64	9,250.60	-1,670.47	-410.83	1,683.82	0.00	0.00	0.00
11,700.00	90.00	179.64	9,250.60	-1,770.47	-410.20	1,783.73	0.00	0.00	0.00
11,800.00	90.00	179.64	9,250.60	-1,870.47	-409.57	1,883.65	0.00	0.00	0.00
11,900.00	90.00	179.64	9,250.60	-1,970.47	-408.95	1,983.56	0.00	0.00	0.00
12,000.00	90.00	179.64	9,250.60	-2,070.47	-408.32	2,083.48	0.00	0.00	0.00
12,100.00	90.00	179.64	9,250.60	-2,170.46	-407.69	2,183.39	0.00	0.00	0.00
12,200.00	90.00	179.64	9,250.60	-2,270.46	-407.06	2,283.31	0.00	0.00	0.00
12,300.00	90.00	179.64	9,250.60	-2,370.46	-406.44	2,383.22	0.00	0.00	0.00
12,400.00	90.00	179.64	9,250.60	-2,470.46	-405.81	2,483.14	0.00	0.00	0.00
12,500.00	90.00	179.64	9,250.60	-2,570.46	-405.18	2,583.05	0.00	0.00	0.00
12,600.00	90.00	179.64	9,250.60	-2,670.45	-404.55	2,682.97	0.00	0.00	0.00
12,700.00	90.00	179.64	9,250.60	-2,770.45	-403.93	2,782.88	0.00	0.00	0.00
12,800.00	90.00	179.64	9,250.60	-2,870.45	-403.30	2,882.80	0.00	0.00	0.00
12,900.00	90.00	179.64	9,250.60	-2,970.45	-402.67	2,982.71	0.00	0.00	0.00
13,000.00	90.00	179.64	9,250.60	-3,070.45	-402.04	3,082.63	0.00	0.00	0.00
13,100.00	90.00	179.64	9,250.60	-3,170.44	-401.42	3,182.54	0.00	0.00	0.00
13,200.00	90.00	179.64	9,250.60	-3,270.44	-400.79	3,282.46	0.00	0.00	0.00
13,300.00	90.00	179.64	9,250.60	-3,370.44	-400.16	3,382.37	0.00	0.00	0.00
13,400.00	90.00	179.64	9,250.60	-3,470.44	-399.53	3,482.29	0.00	0.00	0.00
13,500.00	90.00	179.64	9,250.60	-3,570.44	-398.91	3,582.20	0.00	0.00	0.00
13,600.00	90.00	179.64	9,250.60	-3,670.44	-398.28	3,682.12	0.00	0.00	0.00
13,700.00	90.00	179.64	9,250.60	-3,770.43	-397.65	3,782.03	0.00	0.00	0.00
13,800.00	90.00	179.64	9,250.60	-3,870.43	-397.02	3,881.95	0.00	0.00	0.00
13,900.00	90.00	179.64	9,250.60	-3,970.43	-396.39	3,981.86	0.00	0.00	0.00
14,000.00	90.00	179.64	9,250.60	-4,070.43	-395.77	4,081.78	0.00	0.00	0.00
14,100.00	90.00	179.64	9,250.60	-4,170.43	-395.14	4,181.69	0.00	0.00	0.00
14,200.00	90.00	179.64	9,250.60	-4,270.42	-394.51	4,281.61	0.00	0.00	0.00
14,300.00	90.00	179.64	9,250.60	-4,370.42	-393.88	4,381.52	0.00	0.00	0.00
14,400.00	90.00	179.64	9,250.60	-4,470.42	-393.26	4,481.44	0.00	0.00	0.00
14,500.00	90.00	179.64	9,250.60	-4,570.42	-392.63	4,581.35	0.00	0.00	0.00
14,600.00	90.00	179.64	9,250.60	-4,670.42	-392.00	4,681.27	0.00	0.00	0.00
14,700.00	90.00	179.64	9,250.60	-4,770.41	-391.37	4,781.18	0.00	0.00	0.00
14,800.00	90.00	179.64	9,250.60	-4,870.41	-390.75	4,881.10	0.00	0.00	0.00
14,900.00	90.00	179.64	9,250.60	-4,970.41	-390.12	4,981.01	0.00	0.00	0.00
15,000.00	90.00	179.64	9,250.60	-5,070.41	-389.49	5,080.93	0.00	0.00	0.00
15,100.00	90.00	179.64	9,250.60	-5,170.41	-388.86	5,180.84	0.00	0.00	0.00
15,200.00	90.00	179.64	9,250.60	-5,270.40	-388.24	5,280.76	0.00	0.00	0.00
15,300.00	90.00	179.64	9,250.60	-5,370.40	-387.61	5,380.67	0.00	0.00	0.00
15,400.00	90.00	179.64	9,250.60	-5,470.40	-386.98	5,480.58	0.00	0.00	0.00
15,500.00	90.00	179.64	9,250.60	-5,570.40	-386.35	5,580.50	0.00	0.00	0.00
15,600.00	90.00	179.64	9,250.60	-5,670.40	-385.73	5,680.41	0.00	0.00	0.00

Oxy

Planning Report

Database:	HOPSPP	Local Co-ordinate Reference:	Well Lost Tank 30_19 Federal Com 12H
Company:	ENGINEERING DESIGNS	TVD Reference:	RKB=26.5' @ 3640.60ft
Project:	PRD NM DIRECTIONAL PLANS (NAD 1983)	MD Reference:	RKB=26.5' @ 3640.60ft
Site:	LOST TANK 30-19 FED	North Reference:	Grid
Well:	Lost Tank 30_19 Federal Com 12H	Survey Calculation Method:	Minimum Curvature
Wellbore:	Wellbore #1		
Design:	Permitting Plan		

Planned Survey									
Measured Depth (ft)	Inclination (°)	Azimuth (°)	Vertical Depth (ft)	+N/-S (ft)	+E/-W (ft)	Vertical Section (ft)	Dogleg Rate (°/100ft)	Build Rate (°/100ft)	Turn Rate (°/100ft)
15,700.00	90.00	179.64	9,250.60	-5,770.39	-385.10	5,780.33	0.00	0.00	0.00
15,800.00	90.00	179.64	9,250.60	-5,870.39	-384.47	5,880.24	0.00	0.00	0.00
15,900.00	90.00	179.64	9,250.60	-5,970.39	-383.84	5,980.16	0.00	0.00	0.00
16,000.00	90.00	179.64	9,250.60	-6,070.39	-383.21	6,080.07	0.00	0.00	0.00
16,100.00	90.00	179.64	9,250.60	-6,170.39	-382.59	6,179.99	0.00	0.00	0.00
16,200.00	90.00	179.64	9,250.60	-6,270.38	-381.96	6,279.90	0.00	0.00	0.00
16,300.00	90.00	179.64	9,250.60	-6,370.38	-381.33	6,379.82	0.00	0.00	0.00
16,400.00	90.00	179.64	9,250.60	-6,470.38	-380.70	6,479.73	0.00	0.00	0.00
16,500.00	90.00	179.64	9,250.60	-6,570.38	-380.08	6,579.65	0.00	0.00	0.00
16,600.00	90.00	179.64	9,250.60	-6,670.38	-379.45	6,679.56	0.00	0.00	0.00
16,700.00	90.00	179.64	9,250.60	-6,770.37	-378.82	6,779.48	0.00	0.00	0.00
16,800.00	90.00	179.64	9,250.60	-6,870.37	-378.19	6,879.39	0.00	0.00	0.00
16,900.00	90.00	179.64	9,250.60	-6,970.37	-377.57	6,979.31	0.00	0.00	0.00
17,000.00	90.00	179.64	9,250.60	-7,070.37	-376.94	7,079.22	0.00	0.00	0.00
17,100.00	90.00	179.64	9,250.60	-7,170.37	-376.31	7,179.14	0.00	0.00	0.00
17,200.00	90.00	179.64	9,250.60	-7,270.36	-375.68	7,279.05	0.00	0.00	0.00
17,300.00	90.00	179.64	9,250.60	-7,370.36	-375.06	7,378.97	0.00	0.00	0.00
17,400.00	90.00	179.64	9,250.60	-7,470.36	-374.43	7,478.88	0.00	0.00	0.00
17,500.00	90.00	179.64	9,250.60	-7,570.36	-373.80	7,578.80	0.00	0.00	0.00
17,600.00	90.00	179.64	9,250.60	-7,670.36	-373.17	7,678.71	0.00	0.00	0.00
17,700.00	90.00	179.64	9,250.60	-7,770.35	-372.55	7,778.63	0.00	0.00	0.00
17,800.00	90.00	179.64	9,250.60	-7,870.35	-371.92	7,878.54	0.00	0.00	0.00
17,900.00	90.00	179.64	9,250.60	-7,970.35	-371.29	7,978.46	0.00	0.00	0.00
18,000.00	90.00	179.64	9,250.60	-8,070.35	-370.66	8,078.37	0.00	0.00	0.00
18,100.00	90.00	179.64	9,250.60	-8,170.35	-370.03	8,178.29	0.00	0.00	0.00
18,200.00	90.00	179.64	9,250.60	-8,270.34	-369.41	8,278.20	0.00	0.00	0.00
18,300.00	90.00	179.64	9,250.60	-8,370.34	-368.78	8,378.12	0.00	0.00	0.00
18,400.00	90.00	179.64	9,250.60	-8,470.34	-368.15	8,478.03	0.00	0.00	0.00
18,500.00	90.00	179.64	9,250.60	-8,570.34	-367.52	8,577.95	0.00	0.00	0.00
18,600.00	90.00	179.64	9,250.60	-8,670.34	-366.90	8,677.86	0.00	0.00	0.00
18,700.00	90.00	179.64	9,250.60	-8,770.33	-366.27	8,777.78	0.00	0.00	0.00
18,800.00	90.00	179.64	9,250.60	-8,870.33	-365.64	8,877.69	0.00	0.00	0.00
18,900.00	90.00	179.64	9,250.60	-8,970.33	-365.01	8,977.61	0.00	0.00	0.00
19,000.00	90.00	179.64	9,250.60	-9,070.33	-364.39	9,077.52	0.00	0.00	0.00
19,100.00	90.00	179.64	9,250.60	-9,170.33	-363.76	9,177.44	0.00	0.00	0.00
19,200.00	90.00	179.64	9,250.60	-9,270.32	-363.13	9,277.35	0.00	0.00	0.00
19,300.00	90.00	179.64	9,250.60	-9,370.32	-362.50	9,377.27	0.00	0.00	0.00
19,400.00	90.00	179.64	9,250.60	-9,470.32	-361.88	9,477.18	0.00	0.00	0.00
19,500.00	90.00	179.64	9,250.60	-9,570.32	-361.25	9,577.10	0.00	0.00	0.00
19,600.00	90.00	179.64	9,250.60	-9,670.32	-360.62	9,677.01	0.00	0.00	0.00
19,700.00	90.00	179.64	9,250.60	-9,770.32	-359.99	9,776.93	0.00	0.00	0.00
19,800.00	90.00	179.64	9,250.60	-9,870.31	-359.37	9,876.84	0.00	0.00	0.00
19,900.00	90.00	179.64	9,250.60	-9,970.31	-358.74	9,976.76	0.00	0.00	0.00
20,000.00	90.00	179.64	9,250.60	-10,070.31	-358.11	10,076.67	0.00	0.00	0.00
20,100.00	90.00	179.64	9,250.60	-10,170.31	-357.48	10,176.59	0.00	0.00	0.00
20,140.48	90.00	179.64	9,250.60	-10,210.79	-357.23	10,217.03	0.00	0.00	0.00

Oxy

Planning Report

Database:	HOPSPP	Local Co-ordinate Reference:	Well Lost Tank 30_19 Federal Com 12H
Company:	ENGINEERING DESIGNS	TVD Reference:	RKB=26.5' @ 3640.60ft
Project:	PRD NM DIRECTIONAL PLANS (NAD 1983)	MD Reference:	RKB=26.5' @ 3640.60ft
Site:	LOST TANK 30-19 FED	North Reference:	Grid
Well:	Lost Tank 30_19 Federal Com 12H	Survey Calculation Method:	Minimum Curvature
Wellbore:	Wellbore #1		
Design:	Permitting Plan		

Design Targets									
Target Name	Dip Angle	Dip Dir.	TVD	+N/-S	+E/-W	Northing	Easting	Latitude	Longitude
- hit/miss target	(°)	(°)	(ft)	(ft)	(ft)	(usft)	(usft)		
- Shape									
PBHL (Lost Tank - plan hits target center - Point	0.00	0.00	9,250.60	-10,210.79	-357.23	493,526.89	731,164.00	32° 21' 19.000143 N	103° 43' 6.920456
FTP (Lost Tank 30_19 - plan hits target center - Point	0.00	0.00	9,250.60	233.81	-422.78	503,970.95	731,098.45	32° 23' 2.350611 N	103° 43' 6.985229

Plan Annotations				
Measured Depth	Vertical Depth	Local Coordinates		Comment
(ft)	(ft)	+N/-S	+E/-W	
(ft)	(ft)	(ft)	(ft)	
3,578.00	3,578.00	0.00	0.00	Build 2.00°/100'
4,278.12	4,271.17	77.75	-34.66	Hold 14.00° Tangent
7,565.90	7,461.26	804.35	-358.55	Turn 2.00°/100'
8,935.68	8,816.25	789.74	-426.27	KOP, Build 10.00°/100'
9,695.68	9,250.60	233.81	-422.78	Landing Point
20,140.48	9,250.60	-10,210.79	-357.23	TD at 20140.48' MD

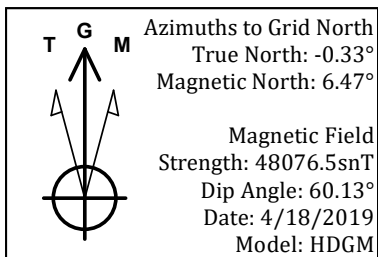


Project: PRD NM DIRECTIONAL PLANS (NAD 1983)
 Site: LOST TANK 30-19 FED
 Well: Lost Tank 30_19 Federal Com 12H
 Wellbore: Wellbore #1
 Design: Permitting Plan

PROJECT DETAILS: NM DIRECTIONAL PLANS (NAD 1983)

Geodetic System: US State Plane 1983
 Datum: North American Datum 1983
 Ellipsoid: GRS 1980
 Zone: New Mexico Eastern Zone

System Datum: Mean Sea Level

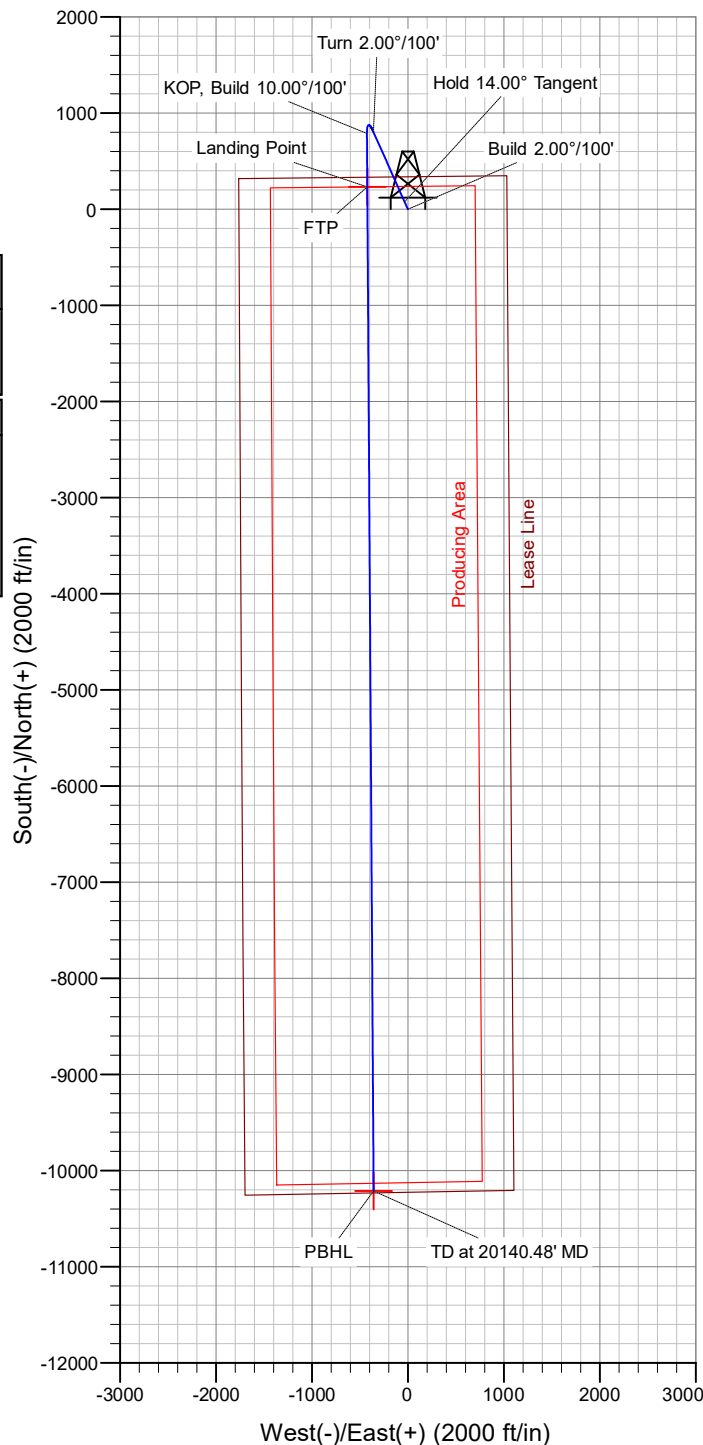
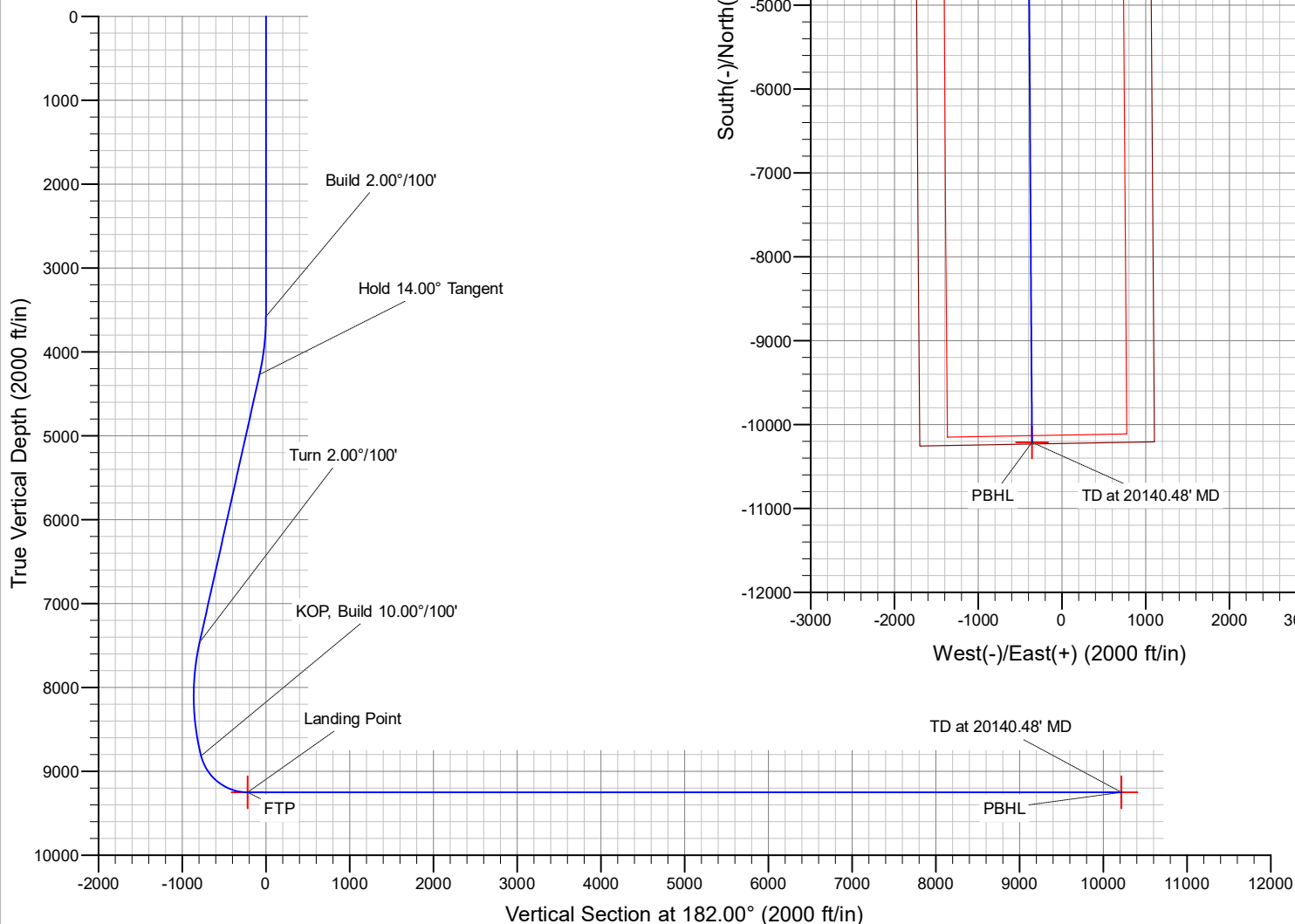


WELL DETAILS: Lost Tank 30_19 Federal Com 12H

+N/-S	+E/-W	Ground Level:	3614.10	Latitude	Longitude
0.00	0.00	North	503737.15	32° 23' 0.013037 N	103° 43' 2.070899 W

SECTION DETAILS

MD	Inc	Azi	TVD	+N/-S	+E/-W	Dleg	TFace	VSect	Annotation
0.00	0.00	0.00	0.00	0.00	0.00	0.00	0.00	0.00	
3578.00	0.00	0.00	3578.00	0.00	0.00	0.00	0.00	0.00	Build 2.00°/100'
4278.12	14.00	335.97	4271.17	77.75	-34.66	2.00	335.97	-76.49	Hold 14.00° Tangent
7565.90	14.00	335.97	7461.26	804.35	-358.55	0.00	0.00	-791.32	Turn 2.00°/100'
8935.68	14.00	179.64	8816.25	789.74	-426.27	2.00	-167.82	-774.35	KOP, Build 10.00°/100'
9695.68	90.00	179.64	9250.60	233.81	-422.78	10.00	0.00	-218.89	Landing Point
20140.48	90.00	179.64	9250.60	-10210.79	-357.23	0.00	0.00	10217.03	TD at 20140.48' MD



Oxy USA Inc. - LOST TANK 30_19 FED COM 12H

1. Geologic Formations

TVD of target	9250'	Pilot Hole Depth	N/A
MD at TD:	20140'	Deepest Expected fresh water:	852'

Delaware Basin

Formation	TVD - RKB	Expected Fluids
Rustler	852	
Salado	1,146	Salt
Castile	2,862	Salt
Lamar/Delaware	4,594	Oil/Gas/Brine
Bell Canyon	4,672	Oil/Gas/Brine
Cherry Canyon	5,510	Oil/Gas/Brine
Brushy Canyon	6,734	Losses
Bone Spring	8,487	Oil/Gas

*H2S, water flows, loss of circulation, abnormal pressures, etc.

2. Casing Program

Hole Size (in)	Casing Interval		Csg. Size (in)	Weight (lbs)	Grade	Conn.	SF		SF Burst	Buoyant	Buoyant
	From (ft)	To (ft)					Collapse			Body SF Tension	Joint SF Tension
17.5	0	902	13.375	54.5	J-55	BTC	1.125		1.2	1.4	1.4
12.25	0	5560	9.625	36	J-55	BTC	1.125		1.2	1.4	1.4
8.5	0	20140	5.5	20	P-110	DQX	1.125		1.2	1.4	1.4
SF Values will meet or Exceed											

All casing strings will be tested in accordance with Onshore Oil and Gas Order #2 III.B.1.h

*Oxy requests the option to set casing shallower yet still below the salts if losses or hole conditions require this. Cement volumes may be adjusted if casing is set shallower and a DV tool may be run in case hole conditions merit pumping a second stage cement job to comply with permitted top of cement. If cement circulated to surface during first stage, we will drop a cancellation cone and not pump the second stage.

*Oxy requests the option to run production casing with DQX, SF TORQ, and/or DQW TORQ connections to accommodate hole conditions or drilling operations.

Annular Clearance Variance Request

As per the agreement reached in the Oxy/BLM meeting on Feb 22, 2018, Oxy requests permission to allow deviation from the 0.422" annular clearance requirement from Onshore Order #2 under the following conditions:

1. Annular clearance to meet or exceed 0.422" between intermediate casing ID and production casing coupling only on the first 500' overlap between both casings.
2. Annular clearance less than 0.422" is acceptable for the curve and lateral portions of the production open hole section.

	Y or N
Is casing new? If used, attach certification as required in Onshore Order #1	Y
Does casing meet API specifications? If no, attach casing specification sheet.	Y
Is premium or uncommon casing planned? If yes attach casing specification sheet.	Y

Oxy USA Inc. - LOST TANK 30_19 FED COM 12H

Does the above casing design meet or exceed BLM's minimum standards? If not provide justification (loading assumptions, casing design criteria).	Y
Will the intermediate pipe be kept at a minimum 1/3 fluid filled to avoid approaching the collapse pressure rating of the casing?	Y
Is well located within Capitan Reef?	N
If yes, does production casing cement tie back a minimum of 50' above the Reef?	
Is well within the designated 4 string boundary.	
Is well located in SOPA but not in R-111-P?	N
If yes, are the first 2 strings cemented to surface and 3 rd string cement tied back 500' into previous casing?	
Is well located in R-111-P and SOPA?	N
If yes, are the first three strings cemented to surface?	
Is 2 nd string set 100' to 600' below the base of salt?	
Is well located in high Cave/Karst?	N
If yes, are there two strings cemented to surface?	
(For 2 string wells) If yes, is there a contingency casing if lost circulation occurs?	
Is well located in critical Cave/Karst?	N
If yes, are there three strings cemented to surface?	

3. Cementing Program

Casing String	# Sks	Wt. (lb/gal)	Yld (ft3/sack)	H2O (gal/sk)	500# Comp. Strength (hours)	Slurry Description
Surface (Lead)	N/A	N/A	N/A	N/A	N/A	N/A
Surface (Tail)	954	14.8	1.33	6.365	5:26	Class C Cement, Accelerator
Intermediate (Lead)	1319	12.9	1.73	8.784	15:26	Pozzolan Cement, Retarder
Intermediate (Tail)	156	14.8	1.33	6.368	7:11	Class C Cement, Accelerator
Production (Lead)	413	11.9	2.24	12.327	14:46	Class H Cement, Retarder, Dispersant, Salt
Production (Tail)	2243	13.2	1.38	6.686	3:49	Class H Cement, Retarder, Dispersant, Salt

	Casing String	Top (ft)	Bottom (ft)	% Excess
	Surface (Lead)	N/A	N/A	N/A
	Surface (Tail)	0	902	100%
	Intermediate (Lead)	0	5060	50%
	Intermediate (Tail)	5060	5560	20%
	Production (Lead)	5060	8435	20%
	Production (Tail)	8435	20140	15%

OXY respectfully requests a variance to cement the 9-5/8" and/or 7-5/8" intermediate casing strings offline.

The summarized operational sequence will be as follows:

1. Run casing as per normal operations. While running casing, conduct negative pressure test and confirm integrity of the float equipment (float collar and shoe).
2. Land casing.
3. Fill pipe with kill weight fluid, and confirm well is static.

Oxy USA Inc. - LOST TANK 30_19 FED COM 12H

- a. If well is not static notify BLM and kill well.
- b. Once well is static notify BLM with intent to proceed with nipple down and offline cementing.
4. Set and pressure test annular packoff.
5. After confirmation of both annular barriers and internal barriers, nipple down BOP and install cap flange. If any barrier fails to test, the BOP stack will not be nipped down until after the cement job is completed.
6. Skid rig to next well on pad.
7. Confirm well is static before removing cap flange.
8. If well is not static notify BLM and kill well prior to cementing or nipping up for further remediation.
9. Install offline cement tool.
10. Rig up cement equipment.
 - a. Notify BLM prior to cement job.
11. Perform cement job.
12. Confirm well is static and floats are holding after cement job.
13. Remove cement equipment, offline cement tools and install night cap with pressure gauge for monitoring.

4. Pressure Control Equipment

BOP installed and tested before drilling which hole?	Size?	Min. Required WP	Type	✓	Tested to:
12.25" Hole	13-5/8"	3M	Annular	✓	70% of working pressure
		3M	Blind Ram	✓	250 psi / 3000 psi
			Pipe Ram		
			Double Ram	✓	
			Other*		
8.5" Hole	13-5/8"	3M	Annular	✓	70% of working pressure
		3M	Blind Ram	✓	250 psi / 3000 psi
			Pipe Ram		
			Double Ram	✓	
			Other*		

*Specify if additional ram is utilized.

Oxy will utilize a 5M annular with a 10M BOPE stack. The BOP/BOPE will be tested by an independent service company to 250 psi low and the high pressure indicated above per Onshore Order 2 requirements. The System may be upgraded to a higher pressure but still tested to the working pressure listed in the table above. If the system is upgraded all the components installed will be functional and tested.

Pipe rams will be operationally checked each 24 hour period. Blind rams will be operationally checked on each trip out of the hole. These checks will be noted on the daily tour sheets. Other accessories to the BOP equipment will include a Kelly cock and floor safety valve (inside BOP) and choke lines and choke manifold. See attached schematics.

Formation integrity test will be performed per Onshore Order #2.
--

Oxy USA Inc. - LOST TANK 30 19 FED COM 12H

	On Exploratory wells or on that portion of any well approved for a 5M BOPE system or greater, a pressure integrity test of each casing shoe shall be performed. Will be tested in accordance with Onshore Oil and Gas Order #2 III.B.1.i.
	A variance is requested for the use of a flexible choke line from the BOP to Choke Manifold. See attached for specs and hydrostatic test chart.
Y	Are anchors required by manufacturer?
	A multibowl or a unionized multibowl wellhead system will be employed. The wellhead and connection to the BOPE will meet all API 6A requirements. The BOP will be tested per Onshore Order #2 after installation on the surface casing which will cover testing requirements for a maximum of 30 days. If any seal subject to test pressure is broken the system must be tested. We will test the flange connection of the wellhead with a test port that is directly in the flange. We are proposing that we will run the wellhead through the rotary prior to cementing surface casing as discussed with the BLM on October 8, 2015. See attached schematics.

BOP Break Testing Request

OXY requests permission to adjust the BOP break testing requirements as per the agreement reached in the OXY/BLM meeting on September 5, 2019. A separate sundry will be sent prior to spud that reflects the pad based break testing plan.

BOP break test under the following conditions:

- After a full BOP test is conducted
- When skidding to drill an intermediate section where ICP is set into the third Bone Spring or shallower.
- When skidding to drill a production section that does not penetrate into the third Bone Spring or deeper.

If the kill line is broken prior to skid, two tests will be performed.

1. Wellhead flange, co-flex hose, kill line connections and upper pipe rams
2. Wellhead flange, HCR valve, check valve, upper pipe rams

If the kill line is not broken prior to skid, only one test will be performed.

1. Wellhead flange, co-flex hose, check valve, upper pipe rams

5. Mud Program

Depth		Type	Weight (ppg)	Viscosity	Water Loss
From (ft)	To (ft)				
0	902	Water-Based Mud	8.6-8.8	40-60	N/C
902	5560	Saturated Brine- Mud	9.8-10.0	35-45	N/C
5560	20140	Saturated Brine-Based or Oil-Based Mud	8.0-9.6	38-50	N/C

Sufficient mud materials to maintain mud properties and meet minimum lost circulation and weight increase requirements will be kept on location at all times. The following is a general list of products: Barite, Bentonite, Gypsum, Lime, Soda Ash, Caustic Soda, Nut Plug, Cedar Fiber, Cotton Seed Hulls, Drilling Paper, Salt Water Clay, CACL2. Oxy will use a closed mud system.

What will be used to monitor the loss or gain of fluid?	PVT/MD Totco/Visual Monitoring
---	--------------------------------

6. Logging and Testing Procedures

Logging, Coring and Testing.		
Yes	Will run GR from TD to surface (horizontal well – vertical portion of hole). Stated logs run will be in the Completion Report and submitted to the BLM.	
No	Logs are planned based on well control or offset log information.	
No	Drill stem test? If yes, explain	
No	Coring? If yes, explain	
Additional logs planned		Interval
No	Resistivity	
No	Density	
No	CBL	
Yes	Mud log	ICP - TD
No	PEX	

7. Drilling Conditions

Condition	Specify what type and where?
BH Pressure at deepest TVD	4618 psi
Abnormal Temperature	No
BH Temperature at deepest TVD	154°F

Pump high viscosity sweeps as needed for hole cleaning. The mud system will be monitored visually/manually as well as with an electronic PVT. The necessary mud products for additional weight and fluid loss control will be on location at all times. Appropriately weighted mud will be used to isolate potential gas, oil, and water zones until such time as casing can be cemented into place for zonal isolation.

Hydrogen Sulfide (H ₂ S) monitors will be installed prior to drilling out the surface shoe. If H ₂ S is detected in concentrations greater than 100 ppm, the operator will comply with the provisions of Onshore Oil and Gas Order #6. If Hydrogen Sulfide is encountered, measured values and formations will be provided to the BLM.	
N	H ₂ S is present
Y	H ₂ S Plan attached

8. Other facets of operation

	Yes/No
Will the well be drilled with a walking/skidding operation? If yes, describe. <ul style="list-style-type: none"> We plan to drill the seven well pad in batch by section: all surface sections, intermediate sections and production sections. The wellhead will be secured with a night cap whenever the rig is not over the well. 	Yes
Will more than one drilling rig be used for drilling operations? If yes, describe. <ul style="list-style-type: none"> Oxy requests the option to contract a Surface Rig to drill, set surface casing, and cement for this well. If the timing between rigs is such that Oxy would not be able to preset surface, the Primary Rig will MIRU and drill the well in its entirety per the APD. Please see the attached document for information on the spudder rig. 	Yes

Oxy USA Inc. - LOST TANK 30_19 FED COM 12H

Total estimated cuttings volume: 1970.7 bbls.

9. Company Personnel

<u>Name</u>	<u>Title</u>	<u>Office Phone</u>	<u>Mobile Phone</u>
Christopher Hollis	Drilling Engineer	713-350-4754	713-380-7754
William Turner	Drilling Engineer Supervisor	713-350-4951	661-817-4586
Simon Benavides	Drilling Superintendent	713-522-8652	281-684-6897
John Willis	Drilling Manager	713-366-5556	713-259-1417

OXY USA Inc.
APD Attachment
Offline Cementing

OXY respectfully requests a variance to cement the 9-5/8" and/or 7-5/8" intermediate casing strings offline.

The summarized operational sequence will be as follows:

1. Run casing as per normal operations. While running casing, conduct negative pressure test and confirm integrity of the float equipment (float collar and shoe).
2. Land casing.
3. Fill pipe with kill weight fluid, and confirm well is static.
 - a. If well is not static notify BLM and kill well.
 - b. Once well is static notify BLM with intent to proceed with nipple down and offline cementing.
4. Set and pressure test annular packoff.
5. After confirmation of both annular barriers and internal barriers, nipple down BOP and install cap flange. If any barrier fails to test, the BOP stack will not be nipped down until after the cement job is completed.
6. Skid rig to next well on pad.
7. Confirm well is static before removing cap flange.
8. If well is not static notify BLM and kill well prior to cementing or nipping up for further remediation.
9. Install offline cement tool.
10. Rig up cement equipment.
 - a. Notify BLM prior to cement job.
11. Perform cement job.
12. Confirm well is static and floats are holding after cement job.
13. Remove cement equipment, offline cement tools and install night cap with pressure gauge for monitoring.



APD ID: 10400048941

Submission Date: 10/15/2019

Highlighted data
reflects the most
recent changes

Operator Name: OXY USA INCORPORATED

Well Name: LOST TANK 30-19 FEDERAL COM

Well Number: 12H

[Show Final Text](#)

Well Type: OIL WELL

Well Work Type: Drill

Section 1 - Existing Roads

Will existing roads be used? YES

Existing Road Map:

LostTank30_19FdCom12H_ExistRoads_20191015141256.pdf

Existing Road Purpose: ACCESS,FLUID TRANSPORT

Row(s) Exist? NO

ROW ID(s)

ID:

Do the existing roads need to be improved? NO

Existing Road Improvement Description:

Existing Road Improvement Attachment:

Section 2 - New or Reconstructed Access Roads

Will new roads be needed? YES

New Road Map:

LostTank30_19FdCom12H_NewRoads_20191015141319.pdf

New road type: LOCAL

Length: 2279

Feet

Width (ft.): 25

Max slope (%): 0

Max grade (%): 0

Army Corp of Engineers (ACOE) permit required? N

ACOE Permit Number(s):

New road travel width: 14

New road access erosion control: Watershed Diversion every 200' if needed.

New road access plan or profile prepared? Y

New road access plan attachment:

LostTank30_19FdCom12H_NewRoads_20191015141407.pdf

Access road engineering design? N

Operator Name: OXY USA INCORPORATED

Well Name: LOST TANK 30-19 FEDERAL COM

Well Number: 12H

Access road engineering design attachment:

Turnout? N

Access surfacing type: OTHER

Access topsoil source: ONSITE

Access surfacing type description: Caliche

Access onsite topsoil source depth: 0

Offsite topsoil source description:

Onsite topsoil removal process: If available

Access other construction information: None

Access miscellaneous information: A new access road will be built. The access road will run approximately 1422 west, 369.2' south, and 50' southwest from an existing road to the southeast corner of the location. A new access road to the Lost Tank 18 CTB will follow the surveyed route; survey of a strip of land 30 wide and 103.3 (0.02mi) in length crossing USA land in section 17 & 18, T22S, R32E, NMPM, Lea County, NM, and being 15 left and 15 right of centerline survey. A new access road to the Lost Tank 24 CGL pad will run approximately 124.1 (0.024mi) in length crossing USA land in section 24, T22S, R31E, NMPM, Eddy County, NM and being 15 left and 15 right of the centerline survey. A new access road to the Lost Tank 19 CGL pad will run approximately 210.6 (0.04mi) in length crossing USA land in section 19, T22S, R32E, NMPM, Lea County, NM, and being 25 left and 25 right of the centerline survey. *25'-construction width 14'-travel width unless otherwise specified*

Number of access turnouts:

Access turnout map:

Drainage Control

New road drainage crossing: CULVERT

Drainage Control comments: Watershed Diversion every 200' if needed.

Road Drainage Control Structures (DCS) description: Watershed Diversion every 200' if needed.

Road Drainage Control Structures (DCS) attachment:

Access Additional Attachments

Section 3 - Location of Existing Wells

Existing Wells Map? YES

Attach Well map:

LostTank30_19FdCom12H_ExistWells_20191015141535.pdf

Section 4 - Location of Existing and/or Proposed Production Facilities

Submit or defer a Proposed Production Facilities plan? SUBMIT

Production Facilities description: a. In the event the wells are found productive, the Lost Tank 18 CTB will be utilized and the necessary production equipment will be installed at the well site. See the proposed Lost Tank 18 CTB pad, flare pad layout diagram (#19110887). In addition, the Lost Tank 24 CGL, the Lost Tank 19 CGL and the Lost Tank 19 Sales

Operator Name: OXY USA INCORPORATED

Well Name: LOST TANK 30-19 FEDERAL COM

Well Number: 12H

Compression Station (9.470 acre surface site) will be constructed, see attached pad layouts (#19110826, #19110825, #30.004724.0000). b. A water treatment plant will be constructed for the Lost Tank area, Lost Tank 18 WTP, will include a SWD pipeline that follows the surveyed route. Survey of a strip of land 30 wide and 1492.5 (0.283mi) in length crossing USA land in section 18, T22S, R32E, NMPM, Lea County, NM, and being 15 left and 15 right of the centerline survey. c. All flow lines will adhere to API standards and will follow a route approved by the BLM. Flowlines routed to the Lost Tank 18 CTB will consist of 3-4 composite flowlines per well operating 75% MAWP, lines to follow surveyed route. Survey of a strip of land 30 wide and 6140.9 (1.163mi) in length crossing USA land in sections 17, 18 & 19, T22S, R32E, NMPM, Lea County, NM, and being 15 left and 15 right of the centerline survey. Gas lines consist of 2-8 buried steel gas lines operating 1500psig and 1 buried fiber optic cable, lines to follow surveyed route. Survey of a strip of land 30 wide and 4707.6 (0.892mi) in length crossing USA land in section 24, T22S, R32E, NMPM, Eddy County, and sections 18 & 19, T22S, R32E, NMPM, Lea County, NM, and being 15 left and 15 right of the centerline survey. d. Two multi-use ROWs will follow a route approved by the BLM. They will include 1-20 buried composite water line operating 750psig; 1-20 buried steel gas line operating 1500psig; and 1 buried fiber optic cable, lines to follow surveyed route. Survey of a strip of land 50 wide and 23,289.8 (4.411mi) in length crossing USA land in sections 17, 18, 19 & 30, T22S, R32E, Lea County and section 13, 24 & 25, T22S, R31E, NMPM, Eddy County, NM and being 25 left and 25 right of centerline survey. Survey of a strip of land 30 wide and 10,643.7 (2.016mi) in length crossing USA land in sections 12 & 13, T22S, R31E, NMPM, Eddy County, NM, and being 15 left and 15 right of the centerline survey. e. Electric lines will follow a route approved by the BLM. Survey a strip of land 30 wide and 24,759.9 (4.689mi) in length crossing USA land in sections 17, 18, 19 & 20, T22S, R32E, NMPM, Lea County, and sections 13 & 24, T22S, R31E, NMPM, Eddy County, NM, and being 15 left and 15 right of centerline survey. An electric line to the Lost Tank 18 CTB will follow the surveyed route. Survey a strip of land 30 wide and 679.3 (0.129mi) in length crossing USA land in section 18, T22S, R32E, NMPM, Lea County, NM, and being 15 left and 15 right of the centerline survey. f. See attached for additional information on the Lost Tank Production Facilities.

Production Facilities map:

LostTank30_19FdCom12H_LeaseFacilityInfo_20191015141557.pdf

Section 5 - Location and Types of Water Supply

Water Source Table

Water source type: GW WELL

Water source use type:

SURFACE CASING

INTERMEDIATE/PRODUCTION
CASING

OTHER

Describe use type: Drilling

Source latitude:

Source longitude:

Source datum:

Water source permit type:

WATER WELL

Water source transport method:

PIPELINE

TRUCKING

Source land ownership: COMMERCIAL

Source transportation land ownership: COMMERCIAL

Water source volume (barrels): 2000

Source volume (acre-feet): 0.25778618

Operator Name: OXY USA INCORPORATED

Well Name: LOST TANK 30-19 FEDERAL COM

Well Number: 12H

Source volume (gal): 84000

Water source and transportation map:

LostTank30_19FdCom12H_GRRWtrSrc_20191015141713.pdf

LostTank30_19FdCom12H_MesqWtrSrc_20191015141722.pdf

Water source comments: This well will be drilled using a combination of water mud systems. It will be obtained from commercial water stations (Gregory Rockhouse, Mesquite) in the area and will be hauled to location by transport truck using existing and proposed roads.

New water well? N

New Water Well Info

Well latitude:

Well Longitude:

Well datum:

Well target aquifer:

Est. depth to top of aquifer(ft):

Est thickness of aquifer:

Aquifer comments:

Aquifer documentation:

Well depth (ft):

Well casing type:

Well casing outside diameter (in.):

Well casing inside diameter (in.):

New water well casing?

Used casing source:

Drilling method:

Drill material:

Grout material:

Grout depth:

Casing length (ft.):

Casing top depth (ft.):

Well Production type:

Completion Method:

Water well additional information:

State appropriation permit:

Additional information attachment:

Section 6 - Construction Materials

Using any construction materials: YES

Construction Materials description: Primary - All caliche utilized for the drilling pad and proposed access road will be obtained from an existing BLM/State/Fee approved pit or from prevailing deposits found on the location. Will use BLM recommended extra caliche from other locations close by for roads, if available. Secondary - The secondary way of obtaining caliche to build locations and roads will be by "turning over" the location. This means, caliche will be obtained from the actual well site. A caliche permit will be obtained from BLM prior to pushing up any caliche. 2400 cubic yards is max amount of caliche needed for pad and roads. Amount will vary for each pad. The procedure below has been approved by BLM personnel: a. The top 6" of topsoil is pushed off and stockpiled along the side of the location. b. An approximate 120' X 120' area is used within the proposed well site to remove caliche. c. Subsoil is removed and piled alongside the 120' X 120' within the pad site. d. When caliche is found, material will be stockpiled within the pad site to build the location and road. e. Then subsoil is pushed back in the hole and caliche is spread accordingly across entire location and road. f. Once the well is drilled the stockpiled top soil will be used for interim reclamation and spread along areas where caliche is picked up and the location size is reduced. Neither caliche nor subsoil will be stockpiled outside of the well pad. Topsoil will be stockpiled along the edge

Operator Name: OXY USA INCORPORATED

Well Name: LOST TANK 30-19 FEDERAL COM

Well Number: 12H

of the pad. Caliche will be provided from a pit located in Section 25 T23S R31E. Water will be provided from a frac pond located in Sections 26 T23S R31E.

Construction Materials source location attachment:

Section 7 - Methods for Handling Waste

Waste type: DRILLING

Waste content description: Water-Based Cuttings, Water-Based Mud, Oil-Based Cuttings, Oil-Based Mud, Produced Water

Amount of waste: 1970.7 barrels

Waste disposal frequency : Daily

Safe containment description: Haul-Off Bins

Safe containmant attachment:

Waste disposal type: HAUL TO COMMERCIAL FACILITY **Disposal location ownership:** COMMERCIAL

Disposal type description:

Disposal location description: An approved facility that can process drill cuttings, drill fluids, flowback water, produced water, contaminated soils, and other non-hazardous wastes.

Reserve Pit

Reserve Pit being used? N

Temporary disposal of produced water into reserve pit? NO

Reserve pit length (ft.) **Reserve pit width (ft.)**

Reserve pit depth (ft.) **Reserve pit volume (cu. yd.)**

Is at least 50% of the reserve pit in cut?

Reserve pit liner

Reserve pit liner specifications and installation description

Cuttings Area

Cuttings Area being used? NO

Are you storing cuttings on location? Y

Description of cuttings location A closed loop system will be utilized consisting of above ground steel tanks and haul-off bins. Disposal of liquids, drilling fluids and cuttings will be disposed of at an approved facility.

Cuttings area length (ft.) **Cuttings area width (ft.)**

Cuttings area depth (ft.) **Cuttings area volume (cu. yd.)**

Is at least 50% of the cuttings area in cut?

WCuttings area liner

Cuttings area liner specifications and installation description

Operator Name: OXY USA INCORPORATED

Well Name: LOST TANK 30-19 FEDERAL COM

Well Number: 12H

Section 8 - Ancillary Facilities

Are you requesting any Ancillary Facilities?: N

Ancillary Facilities attachment:

Comments:

Section 9 - Well Site Layout

Well Site Layout Diagram:

LostTank30_19FdCom12H_WellSiteCL_20191015141813.pdf

Comments: V-Door-East - CL Tanks-North - 280' X 670' 7 Well Pad

Section 10 - Plans for Surface Reclamation

Type of disturbance: New Surface Disturbance

Multiple Well Pad Name: LOST TANK 30-19 FEDERAL COM

Multiple Well Pad Number: 2H, 12H, 13H, 21H, 22H, 23H & 42H

Recontouring attachment:

Drainage/Erosion control construction: Reclamation to be wind rowed as needed to control erosion

Drainage/Erosion control reclamation: Reclamation to be wind rowed as needed to control erosion

Well pad proposed disturbance (acres): 4.31	Well pad interim reclamation (acres): 1.35	Well pad long term disturbance (acres): 2.96
Road proposed disturbance (acres): 1.57	Road interim reclamation (acres): 0.84	Road long term disturbance (acres): 0.73
Powerline proposed disturbance (acres): 17.52	Powerline interim reclamation (acres): 17.52	Powerline long term disturbance (acres): 0
Pipeline proposed disturbance (acres): 60.08	Pipeline interim reclamation (acres): 43.62	Pipeline long term disturbance (acres): 16.46
Other proposed disturbance (acres): 0	Other interim reclamation (acres): 0	Other long term disturbance (acres): 0
Total proposed disturbance: 83.47999999999999	Total interim reclamation: 63.33	Total long term disturbance: 20.150000000000002

Disturbance Comments: See Below

Reconstruction method: If the well is deemed commercially productive, caliche from the areas of the pad site not required for operations will be reclaimed. The original topsoil will be returned to the area of the drill pad not necessary to operate the well. These unused areas of the drill pad will be contoured, as close as possible, to match the original topography, and the area will be seeded with an approved BLM mixture to re-establish vegetation. After concluding the drilling and/or completion operations, if the well is found non-commercial, the caliche will be removed from the pad and transported to the original caliche pit or used for other drilling locations. The road will be reclaimed as directed by the BLM. The original topsoil will again be returned to the pad and contoured, as close as possible, to the original topography, and the area will be seeded with

Operator Name: OXY USA INCORPORATED

Well Name: LOST TANK 30-19 FEDERAL COM

Well Number: 12H

an approved BLM mixture to re-establish vegetation.

Topsoil redistribution: The original topsoil will be returned to the area of the drill pad not necessary to operate the well.

Soil treatment: To be determined by the BLM.

Existing Vegetation at the well pad: To be determined by the BLM at Onsite.

Existing Vegetation at the well pad attachment:

Existing Vegetation Community at the road: To be determined by the BLM at Onsite.

Existing Vegetation Community at the road attachment:

Existing Vegetation Community at the pipeline: To be determined by the BLM at Onsite.

Existing Vegetation Community at the pipeline attachment:

Existing Vegetation Community at other disturbances: To be determined by the BLM at Onsite.

Existing Vegetation Community at other disturbances attachment:

Non native seed used? N

Non native seed description:

Seedling transplant description:

Will seedlings be transplanted for this project? N

Seedling transplant description attachment:

Will seed be harvested for use in site reclamation? N

Seed harvest description:

Seed harvest description attachment:

Seed Management

Seed Table

Seed Summary

Total pounds/Acre:

Seed Type

Pounds/Acre

Seed reclamation attachment:

Operator Contact/Responsible Official Contact Info

Operator Name: OXY USA INCORPORATED

Well Name: LOST TANK 30-19 FEDERAL COM

Well Number: 12H

First Name:

Last Name:

Phone: (575)631-2442

Email: Jim_Wilson@oxy.com

Seedbed prep:

Seed BMP:

Seed method:

Existing invasive species? N

Existing invasive species treatment description:

Existing invasive species treatment attachment:

Weed treatment plan description: To be determined by the BLM.

Weed treatment plan attachment:

Monitoring plan description: To be determined by the BLM.

Monitoring plan attachment:

Success standards: To be determined by the BLM.

Pit closure description: NA

Pit closure attachment:

Section 11 - Surface Ownership

Disturbance type: WELL PAD

Describe:

Surface Owner: BUREAU OF LAND MANAGEMENT

Other surface owner description:

BIA Local Office:

BOR Local Office:

COE Local Office:

DOD Local Office:

NPS Local Office:

State Local Office:

Military Local Office:

USFWS Local Office:

Other Local Office:

USFS Region:

USFS Forest/Grassland:

USFS Ranger District:

Operator Name: OXY USA INCORPORATED

Well Name: LOST TANK 30-19 FEDERAL COM

Well Number: 12H

Disturbance type: PIPELINE

Describe:

Surface Owner: BUREAU OF LAND MANAGEMENT

Other surface owner description:

BIA Local Office:

BOR Local Office:

COE Local Office:

DOD Local Office:

NPS Local Office:

State Local Office:

Military Local Office:

USFWS Local Office:

Other Local Office:

USFS Region:

USFS Forest/Grassland:

USFS Ranger District:

Disturbance type: OTHER

Describe: Electric Line

Surface Owner: BUREAU OF LAND MANAGEMENT

Other surface owner description:

BIA Local Office:

BOR Local Office:

COE Local Office:

DOD Local Office:

NPS Local Office:

State Local Office:

Military Local Office:

USFWS Local Office:

Other Local Office:

USFS Region:

USFS Forest/Grassland:

USFS Ranger District:

Operator Name: OXY USA INCORPORATED

Well Name: LOST TANK 30-19 FEDERAL COM

Well Number: 12H

Disturbance type: NEW ACCESS ROAD

Describe:

Surface Owner: BUREAU OF LAND MANAGEMENT

Other surface owner description:

BIA Local Office:

BOR Local Office:

COE Local Office:

DOD Local Office:

NPS Local Office:

State Local Office:

Military Local Office:

USFWS Local Office:

Other Local Office:

USFS Region:

USFS Forest/Grassland:

USFS Ranger District:

Section 12 - Other Information

Right of Way needed? Y

Use APD as ROW? Y

ROW Type(s): 281001 ROW - ROADS,285003 ROW – POWER TRANS,288100 ROW – O&G Pipeline,288101 ROW – O&G Facility Sites,289001 ROW- O&G Well Pad

ROW Applications

SUPO Additional Information: Permian Basin MOA - To be submitted after APD acceptance. GIS Shapefiles available for BLM download from shared FTP site after APD submittal.

Use a previously conducted onsite? N

Previous Onsite information:

Other SUPO Attachment

LostTank30_19FdCom12H_SUPO_20191015142005.pdf

LostTank30_19FdCom12H_StakeForm_20191015142012.pdf

LostTank30_19FdCom12H_GasCapPlan_20191015142019.pdf

LostTank30_19FdCom12H_MiscSvyPlats_20191015142029.pdf



APD ID: 10400048941

Submission Date: 10/15/2019

Operator Name: OXY USA INCORPORATED

Well Name: LOST TANK 30-19 FEDERAL COM

Well Number: 12H

Well Type: OIL WELL

Well Work Type: Drill

Section 1 - General

Would you like to address long-term produced water disposal? NO

Section 2 - Lined Pits

Would you like to utilize Lined Pit PWD options? N

Produced Water Disposal (PWD) Location:

PWD surface owner:

PWD disturbance (acres):

Lined pit PWD on or off channel:

Lined pit PWD discharge volume (bbl/day):

Lined pit specifications:

Pit liner description:

Pit liner manufacturers information:

Precipitated solids disposal:

Describe precipitated solids disposal:

Precipitated solids disposal permit:

Lined pit precipitated solids disposal schedule:

Lined pit precipitated solids disposal schedule attachment:

Lined pit reclamation description:

Lined pit reclamation attachment:

Leak detection system description:

Leak detection system attachment:

Operator Name: OXY USA INCORPORATED

Well Name: LOST TANK 30-19 FEDERAL COM

Well Number: 12H

Lined pit Monitor description:

Lined pit Monitor attachment:

Lined pit: do you have a reclamation bond for the pit?

Is the reclamation bond a rider under the BLM bond?

Lined pit bond number:

Lined pit bond amount:

Additional bond information attachment:

Section 3 - Unlined Pits

Would you like to utilize Unlined Pit PWD options? N

Produced Water Disposal (PWD) Location:

PWD disturbance (acres):

PWD surface owner:

Unlined pit PWD on or off channel:

Unlined pit PWD discharge volume (bbl/day):

Unlined pit specifications:

Precipitated solids disposal:

Describe precipitated solids disposal:

Precipitated solids disposal permit:

Unlined pit precipitated solids disposal schedule:

Unlined pit precipitated solids disposal schedule attachment:

Unlined pit reclamation description:

Unlined pit reclamation attachment:

Unlined pit Monitor description:

Unlined pit Monitor attachment:

Do you propose to put the produced water to beneficial use?

Beneficial use user confirmation:

Estimated depth of the shallowest aquifer (feet):

Does the produced water have an annual average Total Dissolved Solids (TDS) concentration equal to or less than that of the existing water to be protected?

TDS lab results:

Geologic and hydrologic evidence:

State authorization:

Unlined Produced Water Pit Estimated percolation:

Unlined pit: do you have a reclamation bond for the pit?

Operator Name: OXY USA INCORPORATED

Well Name: LOST TANK 30-19 FEDERAL COM

Well Number: 12H

Is the reclamation bond a rider under the BLM bond?

Unlined pit bond number:

Unlined pit bond amount:

Additional bond information attachment:

Section 4 - Injection

Would you like to utilize Injection PWD options? N

Produced Water Disposal (PWD) Location:

PWD surface owner:

PWD disturbance (acres):

Injection PWD discharge volume (bbl/day):

Injection well mineral owner:

Injection well type:

Injection well number:

Injection well name:

Assigned injection well API number?

Injection well API number:

Injection well new surface disturbance (acres):

Minerals protection information:

Mineral protection attachment:

Underground Injection Control (UIC) Permit?

UIC Permit attachment:

Section 5 - Surface Discharge

Would you like to utilize Surface Discharge PWD options? N

Produced Water Disposal (PWD) Location:

PWD surface owner:

PWD disturbance (acres):

Surface discharge PWD discharge volume (bbl/day):

Surface Discharge NPDES Permit?

Surface Discharge NPDES Permit attachment:

Surface Discharge site facilities information:

Surface discharge site facilities map:

Section 6 - Other

Would you like to utilize Other PWD options? N

Produced Water Disposal (PWD) Location:

PWD surface owner:

PWD disturbance (acres):

Other PWD discharge volume (bbl/day):

Operator Name: OXY USA INCORPORATED

Well Name: LOST TANK 30-19 FEDERAL COM

Well Number: 12H

Other PWD type description:

Other PWD type attachment:

Have other regulatory requirements been met?

Other regulatory requirements attachment:



U.S. Department of the Interior
BUREAU OF LAND MANAGEMENT

Bond Info Data Report

08/10/2020

APD ID: 10400048941

Submission Date: 10/15/2019

Highlighted data
reflects the most
recent changes

Operator Name: OXY USA INCORPORATED

Well Name: LOST TANK 30-19 FEDERAL COM

Well Number: 12H

[Show Final Text](#)

Well Type: OIL WELL

Well Work Type: Drill

Bond Information

Federal/Indian APD: FED

BLM Bond number: ESB000226

BIA Bond number:

Do you have a reclamation bond? NO

Is the reclamation bond a rider under the BLM bond?

Is the reclamation bond BLM or Forest Service?

BLM reclamation bond number:

Forest Service reclamation bond number:

Forest Service reclamation bond attachment:

Reclamation bond number:

Reclamation bond amount:

Reclamation bond rider amount:

Additional reclamation bond information attachment:

District I
1625 N. French Dr., Hobbs, NM 88240
Phone: (575) 393-6161 Fax: (575) 393-0720
District II
811 S. First St., Artesia, NM 88210
Phone: (575) 748-1283 Fax: (575) 748-9720
District III
1000 Rio Brazos Road, Aztec, NM 87410
Phone: (505) 334-6178 Fax: (505) 334-6170
District IV
1220 S. St. Francis Dr., Santa Fe, NM 87505
Phone: (505) 476-3460 Fax: (505) 476-3462

State of New Mexico
Energy, Minerals & Natural Resources Department
OIL CONSERVATION DIVISION
1220 South St. Francis Dr.
Santa Fe, NM 87505

Form C-102
Revised August 1, 2011
Submit one copy to appropriate
District Office

OCD - HOBBS
08/10/2020
RECEIVED

☐ AMENDED REPORT

WELL LOCATION AND ACREAGE DEDICATION PLAT

API Number 47541	Pool Code	Pool Name
Property Code 322423	Property Name LOST TANK "30_19" FEDERAL COM	Well Number 12H
OGRID No.	Operator Name OXY USA INC.	Elevation 3614.1'

Surface Location

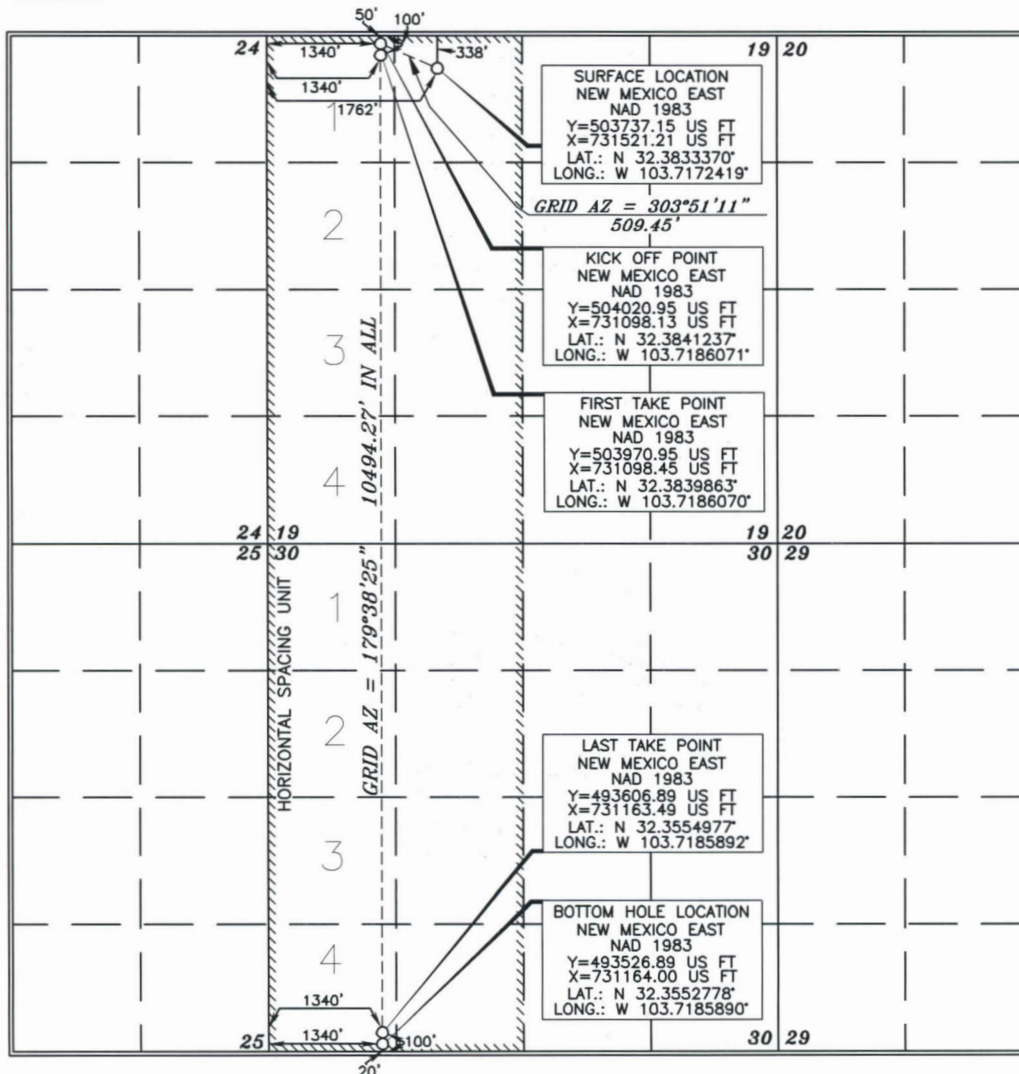
UL or lot no.	Section	Township	Range	Lot Idn	Feet from the	North/South line	Feet from the	East/West line	County
C	19	22 SOUTH	32 EAST, N.M.P.M.		338'	NORTH	1762'	WEST	LEA

Bottom Hole Location If Different From Surface

UL or lot no.	Section	Township	Range	Lot Idn	Feet from the	North/South line	Feet from the	East/West line	County
4	30	22 SOUTH	32 EAST, N.M.P.M.		20'	SOUTH	1340'	WEST	LEA

Dedicated Acres == 678.92	Joint or Infill	Consolidation Code	Order No.
-------------------------------------	-----------------	--------------------	-----------

No allowable will be assigned to this completion until all interests have been consolidated or a non-standard unit has been approved by the division.



OPERATOR CERTIFICATION

I hereby certify that the information contained herein is true and complete to the best of my knowledge and belief, and that this organization either owns a working interest or unleased mineral interest in the land including the proposed bottom hole location or has a right to drill this well at this location pursuant to a contract with an owner of such a mineral or working interest, or to a voluntary pooling agreement or a compulsory pooling order heretofore entered by the division.

Signature _____ Date _____
Printed Name _____
E-mail Address _____

SURVEYOR CERTIFICATION

I hereby certify that the well location shown on this plat was plotted from field notes of actual surveys made by me or under my supervision, and that the same is true and correct to the best of my belief.

Date of Survey **MARCH 20, 2019**
Signature and Seal of Professional Surveyor _____

Certificate Number **15079**

WO# 190320WL-a (KA)

Intent ☐ As Drilled ☐

API # 47541		
Operator Name:	Property Name:	Well Number

Kick Off Point (KOP)

UL	Section	Township	Range	Lot	Feet	From N/S	Feet	From E/W	County
Latitude					Longitude				NAD

First Take Point (FTP)

UL	Section	Township	Range	Lot	Feet	From N/S	Feet	From E/W	County
Latitude					Longitude				NAD

Last Take Point (LTP)

UL	Section	Township	Range	Lot	Feet	From N/S	Feet	From E/W	County
Latitude					Longitude				NAD

Is this well the defining well for the Horizontal Spacing Unit? ☐

Is this well an infill well? ☐

If infill is yes please provide API if available, Operator Name and well number for Defining well for Horizontal Spacing Unit.

API #		
Operator Name:	Property Name:	Well Number

District I
1625 N. French Dr., Hobbs, NM 88240
District II
811 S. First St., Artesia, NM 88210
District III
1000 Rio Brazos Road, Aztec, NM 87410
District IV
1220 S. St. Francis Dr., Santa Fe, NM 87505

State of New Mexico
Energy, Minerals and Natural Resources Department
Oil Conservation Division
1220 South St. Francis Dr.
Santa Fe, NM 87505

Submit Original
to Appropriate
District Office

OCD - HOBBS
08/10/2020
RECEIVED

GAS CAPTURE PLAN

Date: 10/8/2019

☒ Original

Operator & OGRID No.: OXY USA INC. - 16696

☐ Amended - Reason for Amendment: _____

This Gas Capture Plan outlines actions to be taken by the Operator to reduce well/production facility flaring/venting for new completion (new drill, recomple to new zone, re-frac) activity.

Note: Form C-129 must be submitted and approved prior to exceeding 60 days allowed by Rule (Subsection A of 19.15.18.12 NMAC).

Well(s)/Production Facility – Name of facility – LOST TANK 18 CTB

The well(s) that will be located at the production facility are shown in the table below.

Well Name	API	Well Location (ULSTR)	Footages	Expected MCF/D	Flared or Vented	Comments
Lost Tank 30-19 Federal Com 2H	Pending	C-19-22S-32E	303 FNL 1822 FWL	1728	0	
Lost Tank 30-19 Federal Com 11H	Pending	D-19-22S-32E	128 FNL 1200 FWL	2760	0	
Lost Tank 30-19 Federal Com 12H	Pending 30-025-47541	C-19-22S-32E	338 FNL 1762 FWL	2760	0	
Lost Tank 30-19 Federal Com 13H	Pending	C-19-22S-32E	288 FNL 1848 FWL	2760	0	
Lost Tank 30-19 Federal Com 21H	Pending	C-19-22S-32E	391 FNL 1671 FWL	2375	0	
Lost Tank 30-19 Federal Com 22H	Pending	C-19-22S-32E	373 FNL 1701 FWL	2375	0	
Lost Tank 30-19 Federal Com 23H	Pending	C-19-22S-32E	356 FNL 1731 FWL	2375	0	
Lost Tank 30-19 Federal Com 32H	Pending	D-19-22S-32E	128 FNL 1335 FWL	3418	0	
Lost Tank 30-19 Federal Com 33H	Pending	D-19-22S-32E	128 FNL 1370 FWL	3418	0	
Lost Tank 30-19 Federal Com 41H	Pending	D-19-22S-32E	128 FNL 1300 FWL	7244	0	
Lost Tank 30-19 Federal Com 42H	Pending	C-19-22S-32E	321 FNL 1792 FWL	7244	0	
Lost Tank 30-19 Federal Com 71H	Pending	D-19-22S-32E	128 FNL 1270 FWL	2584	0	
Lost Tank 30-19 Federal Com 72H	Pending	D-19-22S-32E	128 FNL 1405 FWL	2584	0	

Gathering System and Pipeline Notification

Well(s) will be connected to a production facility after flowback operations are complete, where a gas transporter system is in place. The gas produced from the production facility currently flows to Enterprise Field Services, LLC ("Enterprise") and is connected to Enterprise's low pressure gathering system located in Eddy, New Mexico. OXY USA INC. ("OXY") may also install compression and deliver to Enterprise's high pressure network and/or to DCP Midstream, LP ("DCP"). It will require 10,600' of pipeline to connect the facility to Enterprise's high pressure gathering system and 1,960' of pipeline to connect the facility to DCP's high pressure gathering system. OXY provides (periodically) to Enterprise and DCP a drilling, completion and estimated first production date for wells that are scheduled to be drilled in the foreseeable future. In addition, OXY, Enterprise, and DCP have periodic conference calls to discuss changes to drilling and completion schedules. Gas from these wells will be processed at Enterprise's Processing Plant located in Sec. 23, Twn. 21S, Rng. 23E, Eddy County, New Mexico or DCP's Processing Plant located in Sec. 30, 31, Twn. 22S, Rng. 32E, Lea County, New Mexico. The actual flow of the gas will be based on compression operating parameters and gathering system pressures.

Flowback Strategy

After the fracture treatment/completion operations, well(s) will be produced to temporary production tanks and gas will be flared or vented. During flowback, the fluids and sand content will be monitored. When the produced fluids contain minimal

sand, the wells will be turned to production facilities. Gas sales should start as soon as the wells start flowing through the production facilities, unless there are operational issues on Enterprise's or DCP's systems at that time. Based on current information, it is OXY's belief the system can take this gas upon completion of the well(s).

Safety requirements during cleanout operations from the use of underbalanced air cleanout systems may necessitate that sand and non-pipeline quality gas be vented and/or flared rather than sold on a temporary basis.

Alternatives to Reduce Flaring

Below are alternatives considered from a conceptual standpoint to reduce the amount of gas flared.

- Power Generation – On lease
 - Only a portion of gas is consumed operating the generator, remainder of gas will be flared
- Compressed Natural Gas – On lease
 - Gas flared would be minimal, but might be uneconomical to operate when gas volume declines
- NGL Removal – On lease
 - Plants are expensive, residue gas is still flared, and uneconomical to operate when gas volume declines