

District I  
1625 N. French Dr., Hobbs, NM 88240  
Phone: (575) 393-6161 Fax: (575) 393-0720  
District II  
811 S. First St., Artesia, NM 88210  
Phone: (575) 748-1283 Fax: (575) 748-9720  
District III  
1000 Rio Brazos Road, Aztec, NM 87410  
Phone: (505) 334-6178 Fax: (505) 334-6170  
District IV  
1220 S. St. Francis Dr., Santa Fe, NM 87505  
Phone: (505) 476-3460 Fax: (505) 476-3462

State of New Mexico  
Energy, Minerals & Natural Resources Department  
OIL CONSERVATION DIVISION  
1220 South St. Francis Dr.  
Santa Fe, NM 87505

Form C-102  
Revised August 1, 2011  
Submit one copy to appropriate  
District Office  
☐ AMENDED REPORT

**OCD - HOBBS**  
**08/26/2020**  
**RECEIVED**

WELL LOCATION AND ACREAGE DEDICATION PLAT

<sup>1</sup> API Number <b>30-025-47639</b>	<sup>2</sup> Pool Code <b>98177</b>	<sup>3</sup> Pool Name <b>WC-025 G-09 S223332A;UPR WOLFCAMP</b>
<sup>4</sup> Property Code <b>328507</b>	<sup>5</sup> Property Name <b>WILD SALSA FED COM</b>	<sup>6</sup> Well Number <b>404H</b>
<sup>7</sup> OGRID No. <b>373986</b>	<sup>8</sup> Operator Name <b>TITUS OIL &amp; GAS PRODUCTION, LLC</b>	<sup>9</sup> Elevation <b>3719'</b>

<sup>10</sup> Surface Location

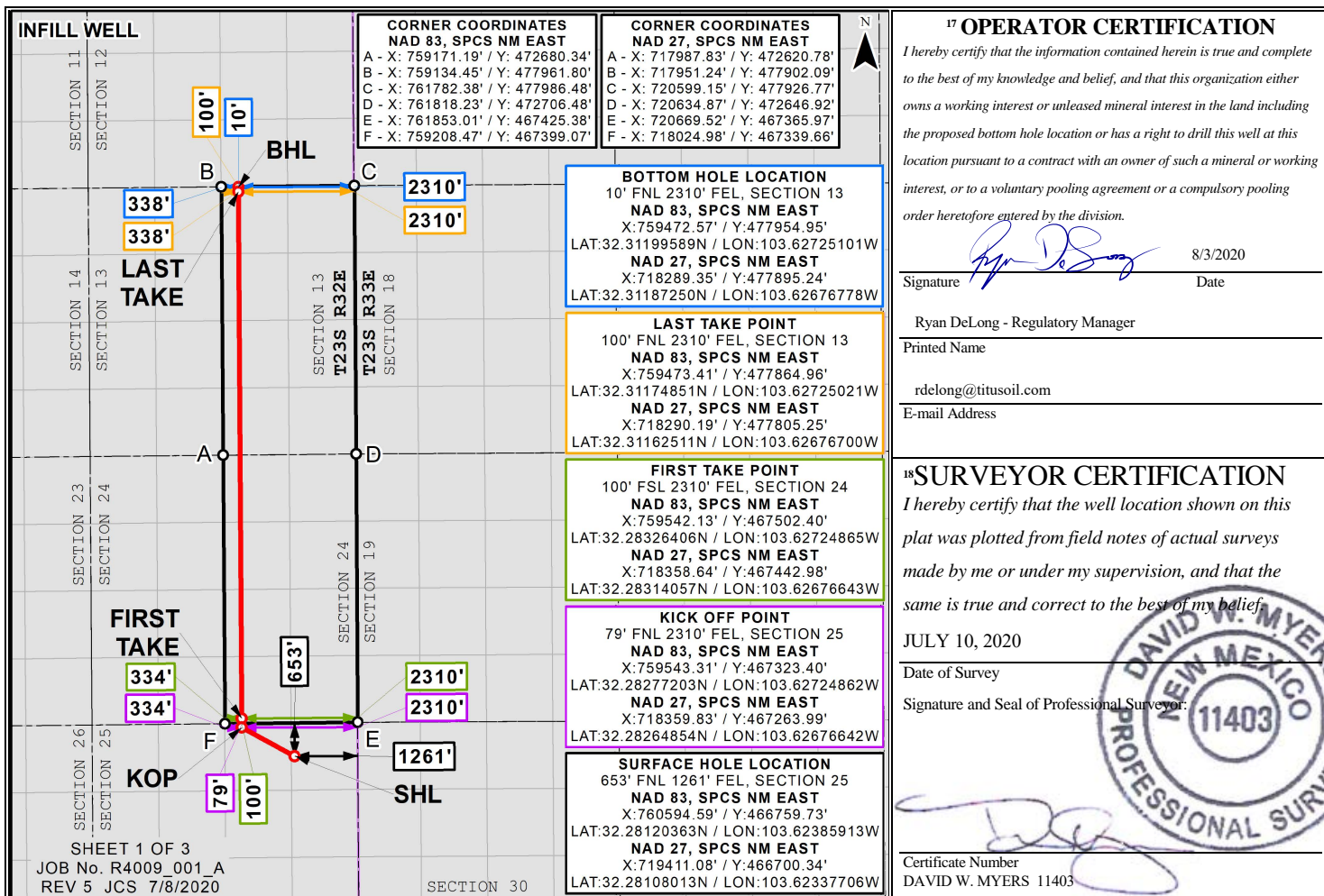
UL or lot no.	Section	Township	Range	Lot Idn	Feet from the	North/South line	Feet from the	East/West line	County
A	25	23S	32E		653	NORTH	1261	EAST	LEA

<sup>11</sup> Bottom Hole Location If Different From Surface

UL or lot no.	Section	Township	Range	Lot Idn	Feet from the	North/South line	Feet from the	East/West line	County
B	13	23S	32E		10	NORTH	2310	EAST	LEA

<sup>12</sup> Dedicated Acres <b>640.0</b>	<sup>13</sup> Joint or Infill	<sup>14</sup> Consolidation Code	<sup>15</sup> Order No.
---	-------------------------------	----------------------------------	-------------------------

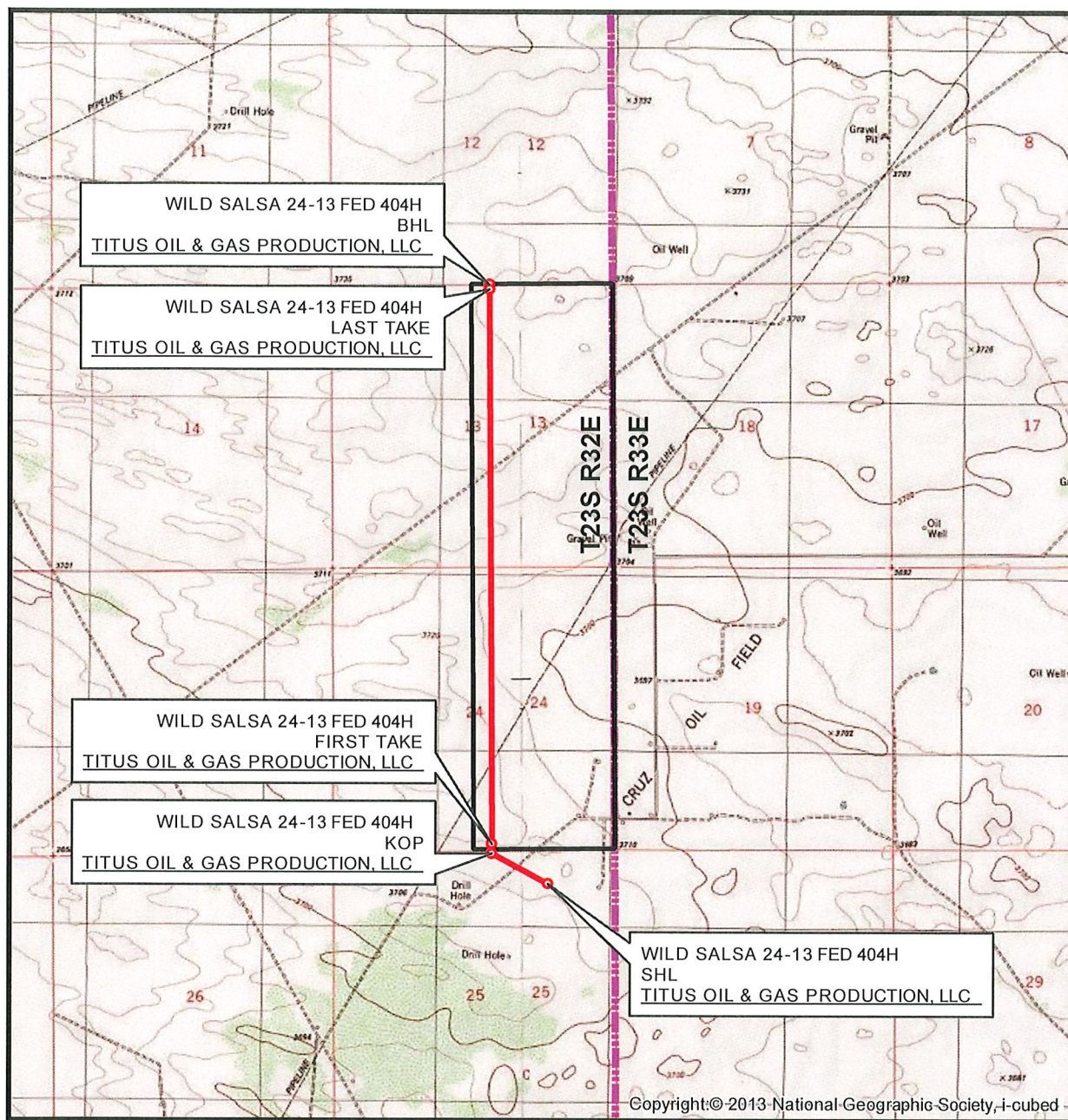
No allowable will be assigned to this completion until all interests have been consolidated or a non-standard unit has been approved by the division.



Distances/areas relative to NAD 83 Combined Scale Factor: 0.9999645 Convergence Angle: 00°22'48.65002"

☐ Horizontal Spacing Unit

# LOCATION VERIFICATION MAP



SEC. 25 TWP. 23-S RGE. 32-E  
 SURVEY: N.M.P.M.  
 COUNTY: LEA  
 OPERATOR: TITUS OIL & GAS PRODUCTION, LLC  
 DESCRIPTION: 653' FNL & 1261' FEL  
 ELEVATION: 3719'  
 LEASE: WILD SALSA 24-13 FED  
 U.S.G.S. TOPOGRAPHIC MAP: TIP TOP WELLS, NM.

1" = 3,000'  
 CONTOUR INTERVAL = 10'

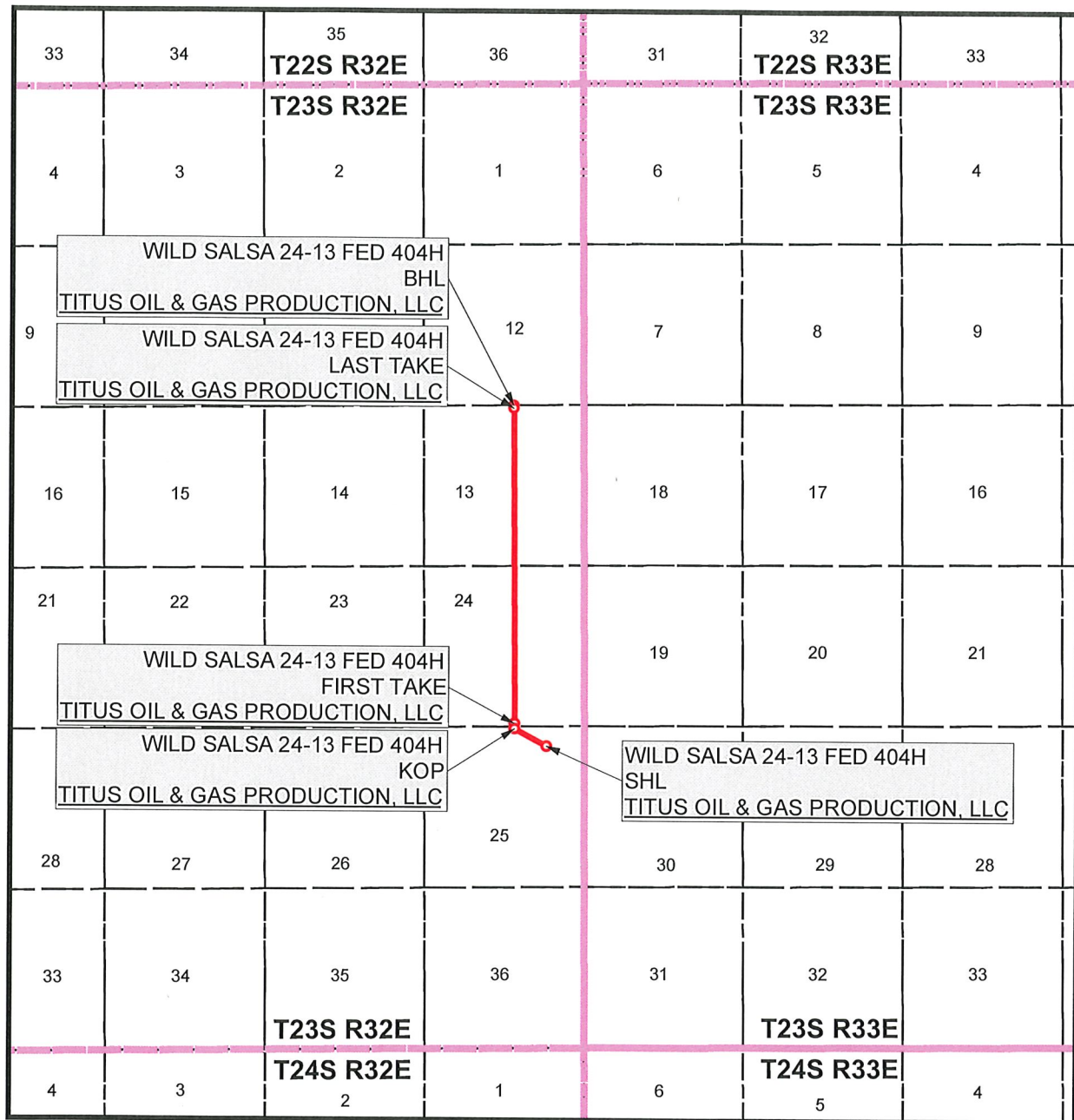


SHEET 2 OF 3

PREPARED BY:  
 R-SQUARED GLOBAL, LLC  
 1309 LOUISVILLE AVENUE, MONROE, LA 71201  
 318-323-6900 OFFICE  
 JOB No. R4009\_001\_A



# VICINITY MAP



SEC. 25 TWP. 23-S RGE. 32-E

SURVEY: N.M.P.M.

COUNTY: LEA

OPERATOR: TITUS OIL & GAS PRODUCTION, LLC

DESCRIPTION: 653' FNL & 1261' FEL

ELEVATION: 3719'

LEASE: WILD SALSA 24-13 FED

U.S.G.S. TOPOGRAPHIC MAP: TIP TOP WELLS, NM.

1" = 1 MILE



SHEET 3 OF 3

PREPARED BY:  
R-SQUARED GLOBAL, LLC  
1309 LOUISVILLE AVENUE, MONROE, LA 71201  
318-323-6900 OFFICE  
JOB No. R4009\_001\_A