



Customer: Caza Petroleum, Inc.
 Lease: Sioux 35-24 State Fed Com
 Well #: 9H
 Job Type: Production
 Date: 08/13/2020

Rig Number:
 County:
 Ticket No.:
 Supervisor:
 Service Point:

Citadel 2
 Lea
 T-25420
 Roberto Garcia
 Cementing - Hobbs, NM

QTY	Unit of Measure	Description of Product	Unit Price	Amount	Discount	Net Amount
Service Charges						
1	Each	Pump Down Casing 22001 - 23000	\$86,694.30	\$86,694.30	87.00%	\$11,270.26
1	Per Day	Reserve Pump	\$13,500.00	\$13,500.00	87.00%	\$1,755.00
1	Each	High Pressure Head & Manifold	\$1,360.80	\$1,360.80	87.00%	\$176.90
1	Per Job	Densometer	\$583.20	\$583.20	87.00%	\$75.82
1	Per Day	Circulating Iron & Swage	\$2,980.80	\$2,980.80	87.00%	\$387.50
5	Per Job	Cement Storage Bin	\$3,088.80	\$15,444.00	87.00%	\$2,007.72
1	Per Unit	100 BBL Blender	\$3,888.00	\$3,888.00	87.00%	\$505.44
Services Subtotal				\$124,451.10		\$16,178.64

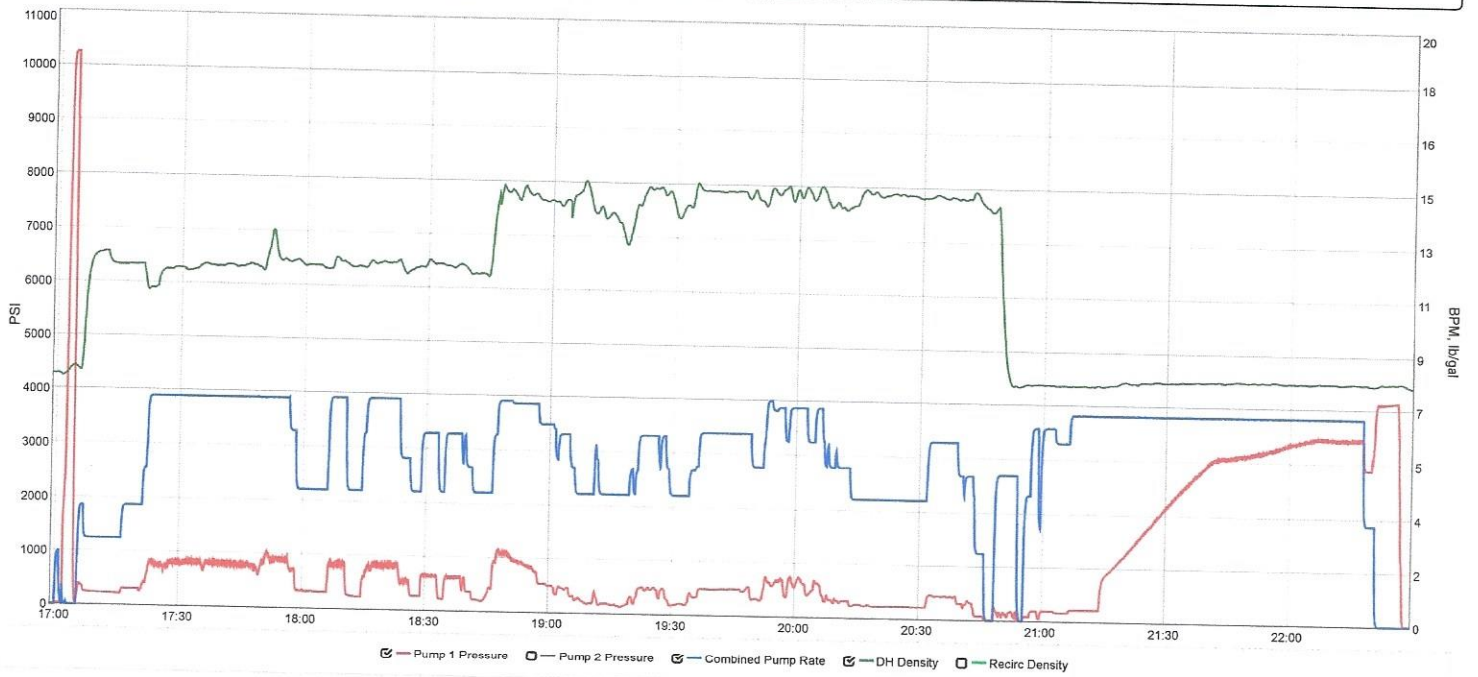
QTY	Unit of Measure	Description of Product	Unit Price	Amount	Discount	Net Amount
Mileage And Delivery						
2550	Unit/Mile	Heavy Equipment Mileage	\$9.97	\$25,423.50	87.00%	\$3,305.06
300	Unit/Mile	Pickup Mileage	\$5.67	\$1,701.00	87.00%	\$221.13
6044	CU FT	Bulk Service Charge	\$2.59	\$15,653.96	87.00%	\$2,035.01
13650	Ton Mile	Product Delivery Charge	\$3.24	\$44,226.00	87.00%	\$5,749.38
0	Unit Hour	Pumping Equipment Standby	\$1,458.00	\$0.00	70.00%	\$0.00
0	Unit Hour	Bulk Equipment Standby	\$486.00	\$0.00	70.00%	\$0.00
0	Per Hour	100 BBL Blender Standby	\$486.00	\$0.00	70.00%	\$0.00
Mileage And Delivery Subtotal				\$87,004.46		\$11,310.58

Description	Date	Time
Call Out Time:	08/13/2020	05:00
Time Request On Location:	08/13/2020	13:00
Arrive On Location:	08/13/2020	12:00
Start Job:	08/13/2020	16:00
Job Complete:	08/13/2020	23:50
Depart Location:	08/14/2020	00:00

123

caza

sioux 35 state



Events

Date	Flag	Total	Description
------	------	-------	-------------

08/13/2020	23:50	Conduct Meetings				Journey management meeting.
08/14/2020	00:00	Other				Departing location

Cement Heights and Tops			
Slurry Type	Cement Height	Cement Top	
Spacer			
Lead CMT		0	
Tail CMT		5183	
Crew Members			
Field Supervisor	Roberto Garcia		
Operator	Roberto Kelly		
Bulk Hand	Jose MUNOZ		
Bulk Hand	Russell Meyers		
Bulk Hand	Kevin McCullough		
Bulk Hand	ILIAN SABORI		
Bulk Hand	Jose MUNOZ		
Casing Information			
	Previous Casing	Hole & Casing Info	
Hole Size 1		8.5	
MD:		22150	
TVD:		12000	
Casing Size	9.625	6.000	
Casing Grade		P-110	
Casing Length	9130	21933	
Casing Weight	40.00	24.500	
Casing ID		5.200	
DV Tool			
Shoe Joint		90	
Burst Pressure		10264	
Cement Returns		235	
Mud Info		Water Info	
Type	OBM	PH	9
Weight	11.2	Chlrd	900
		Temp	700

Spacer					
	PPG		YLD	40	H2O
			1.25	lb/bbl	GXT Spacer
			0.1	gal/bbl	CPT-503L
			2	lb/bbl	Citric Acid
			175	lb/bbl	Barite
			1.5	gal/bbl	Plexaid 830L
Lead CMT					
11.5	PPG	2.23	YLD	11.93	H2O
			1125	Sacks	50/50 Poz H
			5	bwow	Sodium Chloride (Salt)
			7	%	Bentonite Gel
			0.5	%	CPT-19
			0.8	%	CPT-45
			0.4	%	CPT-503P
			0.25	lbs/sk	Cellophane Flakes
			3	lbs/sk	Kol Seal
			0.2	%	CPT-20A
			0.2	%	Citric Acid
Tail CMT					
14.2	PPG	1.18	YLD	4.87	H2O
			2940	Sacks	35/65 Poz H
			2	%	Bentonite Gel
			0.5	%	CPT-30
			0.1	%	CD-3
			0.3	%	CPT-45
			0.55	%	CPT-23

Caza Petroleum, Inc.
Sioux 35-24 State Fed Com 9H
Rig: Citadel 2



Production
T-25420
County: Lea
Supervisor: Roberto Garcia

Cementing Job Log

Date	Time	Description	Rate (BPM)	Volume (BBL)	Pressure (PSI)	Details of Operation and Procedure
08/13/2020	05:00	Called Out				Crew Called for citadel Production job 1300 Hard Time.
08/13/2020	08:00	Load Up For Job				Loading auxiliary equipment at Hobbs yard.
08/13/2020	09:15	Conduct Meetings				Journey management meeting, drivers performing a 360 walk around equipment inspection
08/13/2020	09:35	Depart For Job				Departing Jobs Nm.
08/13/2020	12:00	Arrived on Location				AI NES equipment at Caza Location.
08/13/2020	12:10	Rigs Progress at Arrival				500 +- ft of casing TIH.
08/13/2020	13:00	Casing On Bottom				Rig Reached Casing TD.
08/13/2020	13:30	Conduct Meetings				NES rig up meeting.
08/13/2020	13:35	Rig Equipment				Spot equipment, rigging up ground.
08/13/2020	14:00	Install Cement Head				Installing cement head for rig to pump OBM at 11.4 ppg to rupture flotation tool
08/13/2020	15:30	Mix Spacer				Starting hydrating GXT to mix spacer.
08/13/2020	16:30	Conduct Meetings				Dog house JSA and job description meeting, with all parties involved.
08/13/2020	17:00	Fill Lines	3	3	100	Flood lines to open top trough wash up hoses to test for leaks.
08/13/2020	17:04	Pressure Test			10200	Pressure testing steel lines.
08/13/2020	17:05	Start Spacer	3	0	430	Starting GXT spacer weighed by electronic micro motion, wet sample verified by pressurized mud scale at 11.5 ppg
08/13/2020	17:20	Spacer Complete	5	50	475	GXT spacer completed with 15 % returns
08/13/2020	17:21	Start Cement	5	0	480	Starting lead cement weighed via electronic micro motion verified by pressurized mud scale at 11.5 ppg
08/13/2020	18:42	Cement Complete	4	447	300	lead cement completed, good returns.
08/13/2020	18:43	Start Cement	5	0	300	Starting Tail cement weighed at 14.2 ppg wet sample verified by pressurized scale. Good returns.
08/13/2020	20:40	Cement Complete	3	617	200	Tail cement completed with good returns.
08/13/2020	20:48	Wash Out Pumps & Lines				Washing up pump and lines to the open top, while loading double latch Gryphon plug.
08/13/2020	20:50	Release Plug				Load and release double latch plug, provided by Gryphon tools
08/13/2020	20:55	Start Displacement	6	0	200	Starting fresh water displacement first 20Bbl mixed with CPT-21L (cement retarder)
08/13/2020	20:59	Switch Displacement Fluid	7	20	250	Switching to FAW 3% KCL .good returns
08/13/2020	21:15	Caught Cement	7	120	900	Hydrostatic lift pressure increase from 370 psi up to 900 psi, full returns
08/13/2020	21:50	Other	7	341	3400	Cement circulating back to surface. Full returns.
08/13/2020	22:20	Decrease Rate	3	550	3000	Slowing rate to safely land and latch plug
08/13/2020	22:22	Bump Plug	3	576	4150	Plug landed at 3 Bbl/min final circulating pressure 2,950 psi bump it up to latch plug to 4150 psi. hold and monitor pressure for 5 minutes.
08/13/2020	22:29	Check Floats				Open bleeders , 8 Bbl back plug latched and holding.
08/13/2020	22:40	Conduct Meetings				Rig down meeting.
08/13/2020	22:50	Other				NES crew rigging down equipment