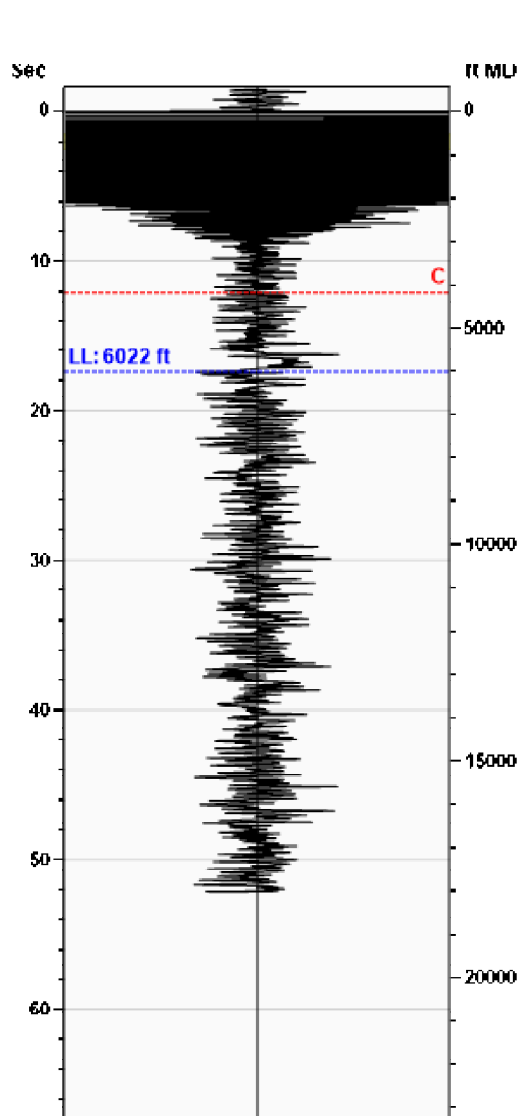


(((ECHOMETER)))

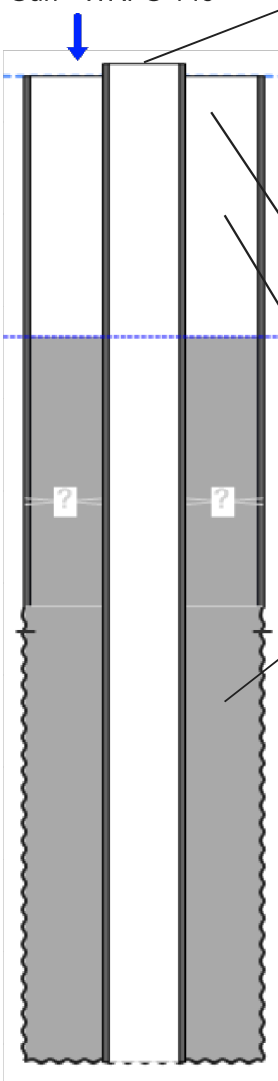
Green Wave 20-32 fed st com #08H
07/13/2020 09:54:55AM

Liquid Level

6022 ft MD

Fluid Above Tubing
Gas Free Above Tubing16739 ft TVD
16739 ft TVD

Gun - WRFG 145

**Production**

Date Entered	07/13/20		
	Current	Potential	
Oil	**	**	BBL/D
Water	**	**	BBL/D
Gas	**	**	Mscf/D
IPR Method	Vogel		
PBHP/SBHP	-0.00		
Producing Efficiency	0.00%		

Casing Pressure

Pressure	1.2 psi (g)
----------	-------------

Annular Gas Flow

Gas Flow	0.0 Mscf/D
----------	------------

Fluid Properties

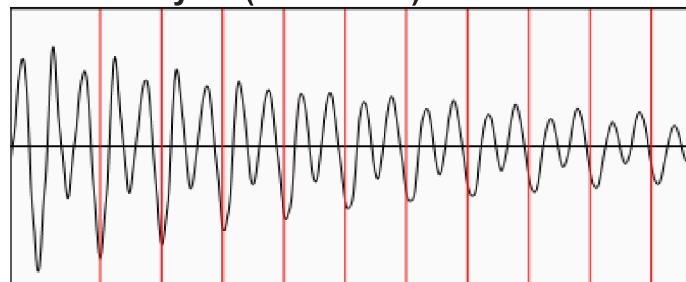
% Liquid Above Tubing	100.00%
% Liquid Below Tubing	**

Depths

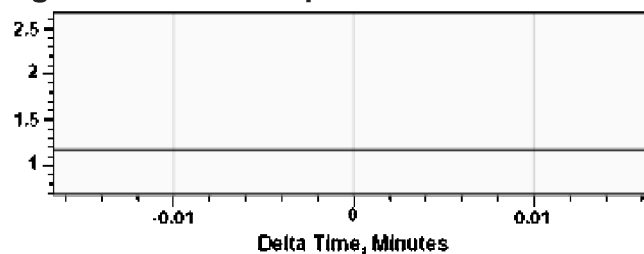
Tubing Depth	22761 ft
Formation Depth	12866 ft

Wellbore Pressures

TIP	4155.8 psi (g)
PBHP	2023.0 psi (g)
SBHP	**
Gas/Liq Interface	5.9 psi (g)

Collar Analysis (Automatic)

Average Acoustic Velocity 691 ft/s
Average Joints Per Sec. 10.90 Jts/sec
Joints To Liquid 189.97 Jts

Casing Pressure Buildup

Casing Pressure 1.2 psi (g)
Buildup 0.0 psi (g)
Buildup Time 0 sec
Gas Gravity from Collar Analysis (Automatic) 1.2616 Air = 1

Comments and Recommendations

500 psi

Echometer Company
5001 Ditto Lane
Wichita Falls, TX 76302
(940) 767-4334
info@echometer.com