

District I  
1625 N. French Dr., Hobbs, NM 88240  
Phone: (575) 393-6161 Fax: (575) 393-0720  
District II  
811 S. First St., Artesia, NM 88210  
Phone: (575) 748-1283 Fax: (575) 748-9720  
District III  
1000 Rio Brazos Road, Aztec, NM 87410  
Phone: (505) 334-6178 Fax: (505) 334-6170  
District IV  
1220 S. St. Francis Dr., Santa Fe, NM 87505  
Phone: (505) 476-3460 Fax: (505) 476-3462

State of New Mexico  
Energy, Minerals & Natural Resources  
Department  
OIL CONSERVATION DIVISION  
1220 South St. Francis Dr.  
Santa Fe, NM 87505

FORM C-102

Revised August 1, 2011

Submit one copy to appropriate

District Office

☐ AMENDED REPORT

## WELL LOCATION AND ACREAGE DEDICATION PLAT

<sup>1</sup> API Number 30-025-46617	<sup>2</sup> Pool Code 98180	<sup>3</sup> Pool Name WC025 G09 S253309P; UPPER WOLFCAMP <b>KZ</b>
<sup>4</sup> Property Code 324978	<sup>5</sup> Property Name DAUNTLESS 7 FED	<sup>6</sup> Well Number #740H
<sup>7</sup> OGRID No. 7377	<sup>8</sup> Operator Name EOG RESOURCES, INC.	<sup>9</sup> Elevation 3491'

<sup>10</sup>Surface Location

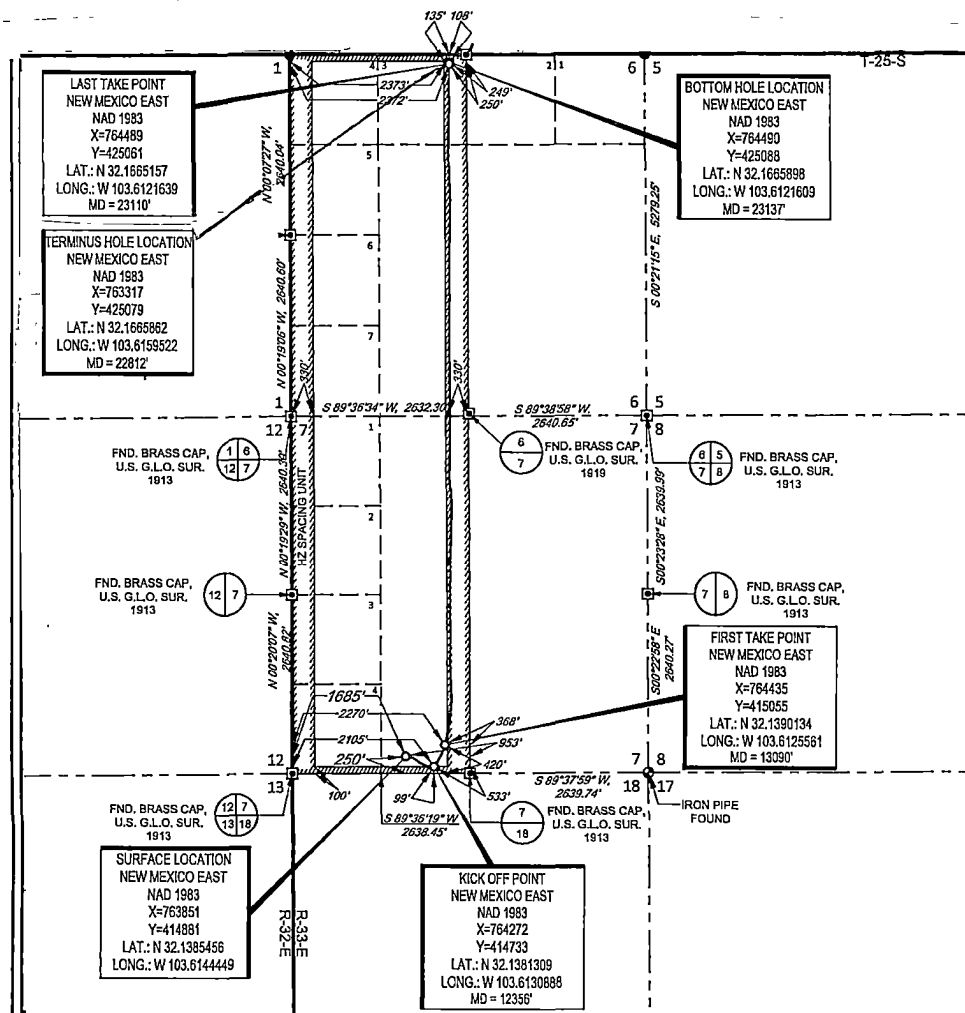
UL or lot no.	Section	Township	Range	Lot Idn	Feet from the	North/South line	Feet from the	East/West line	County
N	7	25-S	33-E	--	250'	SOUTH	1685'	WEST	LEA

SL

UL or lot no.	Section	Township	Range	Lot Idn	Feet from the	North/South line	Feet from the	East/West line	County
C	6	25-S	33-E	-	108'	NORTH	2373'	WEST	LEA

<sup>12</sup> Dedicated Acres 640.00	<sup>13</sup> Joint or Infill	<sup>14</sup> Consolidation Code	<sup>15</sup> Order No.
---	-------------------------------	----------------------------------	-------------------------

No allowable will be assigned to this completion until all interests have been consolidated or a non-standard unit has been approved by the division.

<sup>17</sup>OPERATOR CERTIFICATION

I hereby certify that the information contained herein is true and complete to the best of my knowledge and belief, and that this organization either owns a working interest or unleased mineral interest in the land including the proposed bottom hole location or has a right to drill this well at this location pursuant to a contract with an owner of such a mineral or working interest, or to a voluntary pooling agreement or a compulsory pooling order heretofore entered by the division.

*Kay Maddox* 10/07/2020  
Signature Date

KAY MADDOX

Printed Name

kay\_maddox@eogresources.com

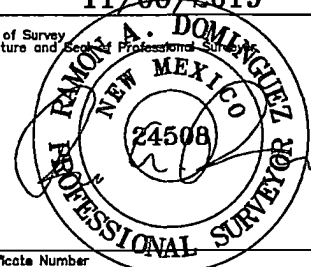
E-mail Address

<sup>18</sup>SURVEYOR CERTIFICATION

I hereby certify that the well location shown on this plat was plotted from field notes of actual surveys made by me or under my supervision, and that the same is true to the best of my belief.

11/06/2019

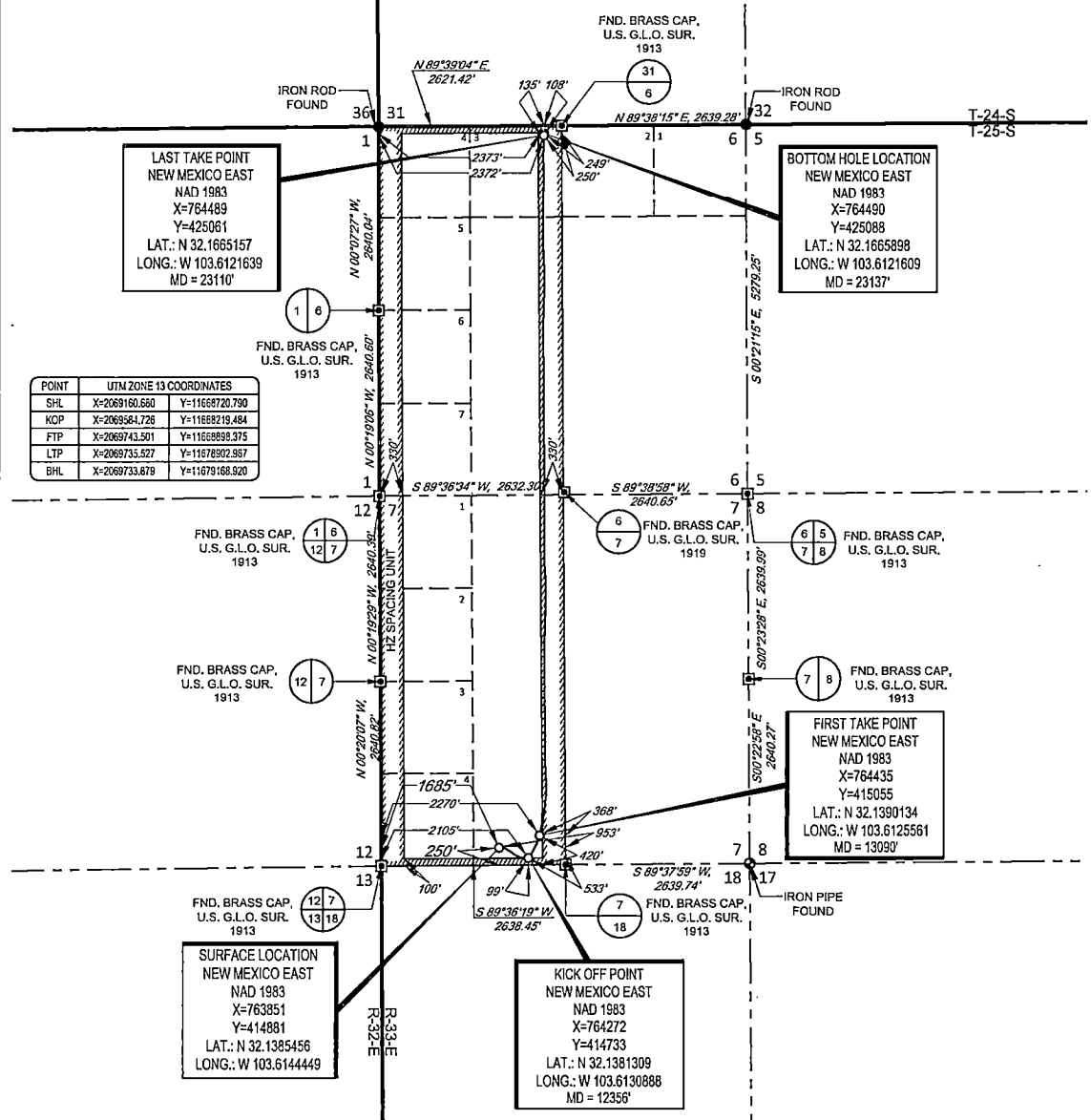
Date of Survey  
Signature and Seal of Professional Surveyor



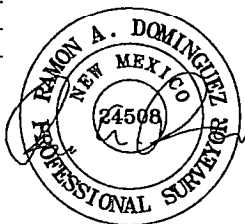
Certificate Number

SCALE: 1" = 2000'  
0' 1000' 2000'

SECTIONS 7, TOWNSHIP 25-S, RANGE 33-E, N.M.P.M.  
LEA COUNTY, NEW MEXICO



LEASE NAME & WELL NO.: DAUNTLESS 7 FED COM #740H  
SECTION 7 TWP 25-S RGE 33-E SURVEY N.M.P.M.  
COUNTY LEA STATE NM ELEVATION 3492'  
DESCRIPTION 250' FSL & 1685' FWL



**TOPOGRAPHIC**  
LOYALTY INNOVATION LEGACY

1400 EVERMAN PARKWAY, Ste. 146 • FT. WORTH, TEXAS 76140  
TELEPHONE: (817) 744-7512 • FAX: (817) 744-7554  
2603 NORTH BIG SPRING • MIDLAND, TEXAS 79705  
TELEPHONE: (432) 682-1653 OR (800) 767-1653 • FAX: (432) 682-1743  
WWW.TOPOGRAPHIC.COM

Ramon A. Dominguez, P.S. No. 24508  
SEPTEMBER 16, 2020

**eoog resources, inc.**

DAUNTLESS 7 FED COM #740H AS-COMplete	REVISION:
DATE: 09/16/2020	
FILE:AD_DAUNTLESS_7_FED_740H	
DRAWN BY: A.V.F.	
SHEET: 1 OF 1	

NOTES:  
1. ORIGINAL DOCUMENT SIZE: 8.5" X 11"  
2. ALL BEARINGS, DISTANCES, AND COORDINATE VALUES CONTAINED HEREIN ARE GRID BASED UPON THE NEW MEXICO COORDINATE SYSTEM, EAST ZONE, U.S. SURVEY FEET, NORTH AMERICAN DATUM 1983.  
3. THIS WELL LOCATION SHOWN HEREON HAS BEEN SURVEYED ON THE GROUND UNDER MY SUPERVISION AND PREPARED ACCORDING TO THE EVIDENCE FOUND AT THE TIME OF SURVEY, AND DATA PROVIDED BY EOG RESOURCES, INC. THIS CERTIFICATION IS MADE AND LIMITED TO THOSE PERSONS OR ENTITIES SHOWN ON THE FACE OF THIS PLAT AND IS NON-TRANSFERABLE. THIS SURVEY IS CERTIFIED FOR THIS TRANSACTION ONLY.

Intent ☐ As Drilled ☒ XXXAPI #  
30-025-46617Operator Name:  
EOG RESOURCES, INCProperty Name:  
DAUNTLESS 7 FEDERALWell Number  
740H

## Kick Off Point (KOP)

UL N	Section 7	Township 25S	Range 33E	Lot	Feet 99	From N/S SOUTH	Feet 2105	From E/W WEST	County LEA
Latitude 32.1381309					Longitude 103.6130888			NAD 1983	

## First Take Point (FTP)

UL N	Section 7	Township 25S	Range 33E	Lot	Feet 420	From N/S SOUTH	Feet 2270	From E/W WEST	County LEA
Latitude 32.1390134					Longitude 103.6125561			NAD 1983	

## Last Take Point (LTP)

UL C	Section 6	Township 25S	Range 33E	Lot	Feet 135	From N/S NORTH	Feet 2372	From E/W WEST	County LEA
Latitude 32.1665157					Longitude 103.6121639			NAD 1983	

Is this well the defining well for the Horizontal Spacing Unit?

☐ NO

Is this well an infill well?

☐ YES

If infill is yes please provide API if available, Operator Name and well number for Defining well for Horizontal Spacing Unit.

API #  
30-025-46619Operator Name:  
EOG RESOURCES, INCProperty Name:  
DAUNTLESS 7 FEDERALWell Number  
#742H

REC'D

REC'D 10/8/2020 - NMOCD

KZ



## **EOG Resources - Midland**

Lea County, NM (NAD 83 NME)

Dauntless 7 Fed

#740H

OH

Design: OH

## **Midland Final PVA**

23 March, 2020



**EOG Resources**  
Midland Final PVA

Company:	EOG Resources - Midland	Local Co-ordinate Reference:	Well #740H
Project:	Lea County, NM (NAD 83 NME)	TVD Reference:	KB = 25 @ 3516.0usft (M7502)
Site:	Dauntless 7 Fed	MD Reference:	KB = 25 @ 3516.0usft (M7502)
Well:	#740H	North Reference:	Grid
Wellbore:	OH	Survey Calculation Method:	Minimum Curvature
Design:	OH	Database:	EDM 5000.14

Project	Lea County, NM (NAD 83 NME)		
Map System:	US State Plane 1983	System Datum:	Mean Sea Level
Geo Datum:	North American Datum 1983		
Map Zone:	New Mexico Eastern Zone		

Site	Dauntless 7 Fed		
Site Position:		Northing:	414,874.00 usft
From:	Map	Easting:	762,795.00 usft
Position Uncertainty:	0.0 usft	Slot Radius:	13-3/16 "
		Latitude:	32° 8' 18.763 N
		Longitude:	103° 37' 4.285 W
		Grid Convergence:	0.38 "

Well	#740H		
Well Position	+N-S	0.0 usft	Northing:
	+E-W	0.0 usft	Easting:
Position Uncertainty	0.0 usft		Wellhead Elevation:
			Ground Level:

Wellbore	OH		
Magnetics	Model Name	Sample Date	Declination
	IGRF2015	1/3/2020	6.69
			Dip Angle
			59.94
			Field Strength
			47,620.75831636

Design	OH		
Audit Notes:			
Version:	1.0	Phase:	ACTUAL
		Tie On Depth:	0.0
Vertical Section:	Depth From (TVD)	+N-S	+E-W
	(usft)	(usft)	(usft)
	0.0	0.0	0.0
			Direction
			3.57

Survey Program	Date 3/23/2020		
From	To	Survey (Wellbore)	Tool Name
(usft)	(usft)		Description
131.0	23,137.0	DrilTech MWD #1 (OH)	EOG MWD+IFR1
			MWD + IFR1



**EOG Resources**  
Midland Final PVA

Company: EOG Resources - Midland  
Project: Lea County, NM (NAD 83 NME)  
Site: Dauntless 7 Fed  
Well: #740H  
Wellbore: OH  
Design: OH

Local Co-ordinate Reference: Well #740H  
TVD Reference: KB = 25 @ 3516.0usft (M7502)  
MD Reference: KB = 25 @ 3516.0usft (M7502)  
North Reference: Grid  
Survey Calculation Method: Minimum Curvature  
Database: EDM 5000.14

MD (usft)	Inc (°)	Azi (azimuth) (°)	TVD (usft)	N/S (usft)	E/W (usft)	DLeg (°/100usft)	Build (°/100usft)	Turn (°/100usft)	High to Plan (usft)	Right to Plan (usft)
0.0	0.00	0.00	0.0	0.0	0.0	0.00	0.00	0.00	0.0	0.0
131.0	0.70	47.85	131.0	0.5	0.6	0.53	0.53	0.00	0.0	0.0
316.0	0.70	24.65	316.0	2.3	1.9	0.15	0.00	-12.54	0.0	0.0
501.0	0.79	4.87	501.0	4.6	2.5	0.15	0.05	-10.69	0.0	0.0
687.0	0.53	53.21	687.0	6.4	3.3	0.32	-0.14	25.99	0.0	0.0
782.0	0.44	55.50	782.0	6.9	3.9	0.10	-0.09	2.41	0.0	0.0
973.0	0.62	355.47	972.9	8.3	4.5	0.29	0.09	-31.43	0.0	0.0
1,106.0	0.18	73.52	1,105.9	9.1	4.6	0.46	-0.33	58.68	0.0	0.0
1,255.0	0.26	122.03	1,254.9	9.0	5.1	0.13	0.05	32.56	0.0	0.0
1,446.0	0.18	131.52	1,445.9	8.6	5.7	0.05	-0.04	4.97	-0.2	-0.3
1,636.0	2.02	73.07	1,635.9	9.3	9.1	1.02	0.97	-30.76	-2.8	-0.2
1,827.0	1.93	71.40	1,826.8	11.3	15.4	0.06	-0.05	-0.87	-8.8	0.0
2,018.0	1.93	66.13	2,017.7	13.7	21.4	0.09	0.00	-2.76	-14.6	-0.7
2,208.0	1.67	60.77	2,207.6	16.3	26.7	0.16	-0.14	-2.82	-19.9	-1.9
2,399.0	2.02	57.25	2,398.5	19.5	32.0	0.19	0.18	-1.84	-25.5	-2.8
2,590.0	1.67	110.60	2,589.4	20.3	37.4	0.88	-0.18	27.93	-21.6	21.3
2,781.0	1.85	86.17	2,780.3	19.6	43.1	0.40	0.09	-12.79	-33.5	9.5
2,971.0	2.64	107.62	2,970.2	18.4	50.3	0.60	0.42	11.29	-34.2	22.2
3,162.0	3.69	130.38	3,160.9	13.1	59.2	0.85	0.55	11.92	-31.9	34.9
3,353.0	3.34	123.79	3,351.5	6.1	68.5	0.28	-0.18	-3.45	-36.3	28.5
3,543.0	2.64	122.21	3,541.3	0.6	76.8	0.37	-0.37	-0.83	-25.7	24.6
3,734.0	3.43	137.59	3,732.0	-5.9	84.4	0.59	0.41	8.05	-7.6	23.0
3,925.0	5.63	115.26	3,922.4	-14.1	96.7	1.46	1.15	-11.69	-8.0	16.0
4,115.0	6.68	120.02	4,111.3	-23.6	114.7	0.61	0.55	2.51	-4.8	15.4
4,306.0	7.30	121.24	4,300.9	-35.5	134.7	0.33	0.32	0.64	-5.5	13.2
4,497.0	6.77	120.27	4,490.4	-47.5	154.8	0.28	-0.28	-0.51	-6.9	10.8
4,688.0	8.88	128.27	4,679.7	-62.3	176.1	1.24	1.10	4.19	-9.5	8.0



**EOG Resources**  
Midland Final PVA

Company:	EOG Resources - Midland	Local Co-ordinate Reference:	Well #740H
Project:	Lea County, NM (NAD 83 NME)	TVD Reference:	KB = 25 @ 3516.0usft (M7502)
Site:	Dauntless 7 Fed	MD Reference:	KB = 25 @ 3516.0usft (M7502)
Well:	#740H	North Reference:	Grid
Wellbore:	OH	Survey Calculation Method:	Minimum Curvature
Design:	OH	Database:	EDM 5000.14

MD (usft)	Inc (°)	Azi (azimuth) (°)	TVD (usft)	N/S (usft)	E/W (usft)	DLeg. (°/100usft)	Build (°/100usft)	Turn (°/100usft)	High to Plan (usft)	Right to Plan (usft)
4,879.0	6.42	124.84	4,868.9	-77.5	196.5	1.31	-1.29	-1.80	-13.4	2.6
5,069.0	4.92	120.62	5,058.0	-87.7	212.2	0.82	-0.79	-2.22	-10.1	-1.4
5,260.0	5.89	125.55	5,248.2	-97.6	227.2	0.56	0.51	2.58	-6.1	-4.0
5,451.0	6.77	123.96	5,438.0	-109.6	244.5	0.47	0.46	-0.83	-5.0	-8.0
5,641.0	8.79	109.90	5,626.3	-120.8	267.5	1.45	1.06	-7.40	-6.1	-9.8
5,832.0	8.18	109.11	5,815.2	-130.2	294.0	0.33	-0.32	-0.41	-12.0	-7.8
6,023.0	6.33	107.35	6,004.6	-137.8	316.9	0.98	-0.97	-0.92	-13.7	-5.7
6,213.0	5.80	106.56	6,193.6	-143.6	336.1	0.28	-0.28	-0.42	-11.6	-2.8
6,404.0	7.30	107.18	6,383.3	-150.0	357.0	0.79	0.79	0.32	-11.3	0.4
6,594.0	7.47	107.09	6,571.7	-157.2	380.3	0.09	0.09	-0.05	-13.7	3.3
6,785.0	6.60	105.59	6,761.3	-163.8	402.7	0.47	-0.46	-0.79	-15.1	6.2
6,976.0	4.48	110.60	6,951.4	-169.3	420.3	1.14	-1.11	2.62	-10.5	10.1
7,166.0	2.64	112.98	7,141.0	-173.7	431.3	0.97	-0.97	1.25	0.4	11.5
7,357.0	1.32	143.48	7,331.9	-177.1	436.6	0.86	-0.69	15.97	16.7	3.0
7,548.0	0.88	87.66	7,522.9	-178.9	439.4	0.58	-0.23	-29.23	9.9	16.6
7,738.0	1.14	69.82	7,712.8	-178.1	442.6	0.21	0.14	-9.39	1.1	18.4
7,834.0	0.97	85.03	7,808.8	-177.7	444.3	0.34	-0.18	15.84	4.1	17.7
8,024.0	0.97	69.47	7,998.8	-177.0	447.5	0.14	0.00	-8.19	-3.9	17.7
8,215.0	2.64	66.83	8,189.7	-174.7	453.0	0.88	0.87	-1.38	-10.7	17.4
8,405.0	2.46	79.49	8,379.5	-172.3	461.0	0.31	-0.09	6.66	-15.0	20.3
8,596.0	2.29	93.29	8,570.4	-171.8	468.9	0.31	-0.09	7.23	-17.5	24.3
8,787.0	1.93	90.83	8,761.2	-172.0	475.9	0.19	-0.19	-1.29	-25.6	23.4
8,978.0	1.58	99.97	8,952.1	-172.5	481.7	0.23	-0.18	4.79	-27.3	27.6
9,168.0	1.67	99.18	9,142.1	-173.4	487.0	0.05	0.05	-0.42	-33.1	27.2
9,360.0	1.23	98.83	9,334.0	-174.2	491.8	0.23	-0.23	-0.18	-38.1	27.0
9,550.0	0.79	258.26	9,524.0	-174.8	492.6	1.05	-0.23	83.91	45.8	-11.2
9,741.0	1.06	289.90	9,715.0	-174.4	489.6	0.30	0.14	18.57	30.2	-32.8



**EOG Resources**  
Midland Final PVA

Company:	EOG Resources - Midland	Local Co-ordinate Reference:	Well #740H
Project:	Lea County, NM (NAD 83 NME)	TVD Reference:	KB = 25 @ 3516.0usft (M7502)
Site:	Dauntless 7 Fed	MD Reference:	KB = 25 @ 3516.0usft (M7502)
Well:	#740H	North Reference:	Grid
Wellbore:	OH	Survey Calculation Method:	Minimum Curvature
Design:	OH	Database:	EDM 5000.14

MD (usft)	Inc (°)	Azi (azimuth) (°)	TVD (usft)	N/S (usft)	E/W (usft)	DLeg (°/100usft)	Build (°/100usft)	Turn (°/100usft)	High to Plan (usft)	Right to Plan (usft)
9,932.0	0.26	228.20	9,905.9	-174.1	487.6	0.50	-0.42	-32.30	42.0	9.5
10,123.0	0.79	80.98	10,096.9	-174.2	488.6	0.53	0.28	-77.08	-41.4	14.5
10,314.0	1.93	252.02	10,287.9	-175.0	486.8	1.42	0.60	89.55	41.2	-7.7
10,504.0	1.93	247.10	10,477.8	-177.2	480.9	0.09	0.00	-2.59	35.3	-4.4
10,695.0	3.08	266.52	10,668.6	-178.8	472.8	0.74	0.60	10.17	23.7	-14.8
10,886.0	3.96	273.64	10,859.3	-178.7	461.1	0.51	0.46	3.73	10.0	-17.0
11,077.0	1.76	279.00	11,050.0	-177.8	451.6	1.16	-1.15	2.81	-1.1	-17.2
11,267.0	1.23	273.20	11,239.9	-177.2	446.7	0.29	-0.28	-3.05	-4.3	-17.6
11,458.0	0.70	294.12	11,430.9	-176.6	443.6	0.33	-0.28	10.95	-13.4	-14.1
11,649.0	2.55	334.46	11,621.8	-172.3	440.7	1.08	0.97	21.12	-24.5	-1.4
11,732.0	3.08	330.15	11,704.7	-168.7	438.8	0.69	0.64	-5.19	-28.4	-3.3
11,870.0	3.34	326.83	11,842.5	-162.1	434.7	0.23	0.19	-2.41	-35.9	-5.2
11,965.0	2.10	313.63	11,937.4	-158.6	431.9	1.45	-1.31	-13.89	-38.2	-13.9
12,061.0	2.46	315.48	12,033.3	-155.9	429.2	0.38	0.37	1.93	-42.4	-12.6
12,156.0	2.29	319.43	12,128.3	-153.0	426.6	0.25	-0.18	4.16	-47.1	-9.5
12,252.0	2.29	305.46	12,224.2	-150.5	423.7	0.58	0.00	-14.55	-47.2	-21.1
12,346.0	2.11	309.38	12,318.1	-148.3	420.9	0.25	-0.19	4.17	-52.1	-17.6
12,391.2	1.22	19.25	12,363.3	-147.3	420.4	4.52	-1.96	154.59	-35.3	43.7
HL Crossing, MD:12391.2, TVD:12363.3, N/S:-147.3, E/W:420.4, INC:1.22										
12,394.3	1.26	25.45	12,366.4	-147.2	420.4	4.52	1.34	189.00	-30.4	47.2
KOP(DL 7 Fed #710H)										
12,441.0	2.81	70.23	12,413.1	-146.4	421.7	4.52	3.31	95.92	11.7	53.4
12,537.0	5.98	25.66	12,508.8	-141.1	426.1	4.62	3.30	-46.43	-15.3	42.4
12,636.0	6.16	33.92	12,607.2	-132.0	431.3	0.90	0.18	8.34	18.8	34.7
12,731.0	30.60	35.59	12,696.7	-107.8	448.5	25.73	25.73	1.76	43.6	20.3
12,826.0	51.62	29.70	12,767.9	-55.1	481.4	22.48	22.13	-6.20	47.0	10.2





**EOG Resources**  
Midland Final PVA

Company:	EOG Resources - Midland	Local Co-ordinate Reference:	Well #740H
Project:	Lea County, NM (NAD 83 NME)	TVD Reference:	KB = 25 @ 3516.0usft (M7502)
Site:	Dauntless 7 Fed	MD Reference:	KB = 25 @ 3516.0usft (M7502)
Well:	#740H	North Reference:	Grid
Wellbore:	OH	Survey Calculation Method:	Minimum Curvature
Design:	OH	Database:	EDM 5000.14

MD (usft)	Inc (°)	Azi (azimuth) (°)	TVD (usft)	N/S (usft)	E/W (usft)	DLeg (°/100usft)	Build (°/100usft)	Turn (°/100usft)	High to Plan (usft)	Right to Plan (usft)
12,878.5	62.16	28.13	12,796.6	-16.7	502.6	20.23	20.07	-2.99	42.8	4.4
FTP(DL 7 Fed #740H)										
12,921.0	70.70	27.07	12,813.5	17.8	520.6	20.23	20.10	-2.49	36.4	-0.1
12,968.0	80.81	27.33	12,825.1	58.3	541.4	21.52	21.51	0.55	25.9	-5.7
13,017.0	88.81	21.53	12,829.5	102.6	561.5	20.13	16.33	-11.84	12.0	-9.1
13,112.0	88.55	12.65	12,831.7	193.3	589.4	9.35	-0.27	-9.35	-7.7	-5.6
13,208.0	88.11	11.78	12,834.5	287.1	609.7	1.02	-0.46	-0.91	-9.5	5.4
13,303.0	87.14	11.69	12,838.4	380.1	629.0	1.03	-1.02	-0.09	-5.7	12.2
13,399.0	87.67	7.38	12,842.8	474.6	644.9	4.52	0.55	-4.49	-1.6	16.3
13,494.0	88.29	7.20	12,846.1	568.8	657.0	0.68	0.65	-0.19	1.7	17.7
13,589.0	89.25	3.60	12,848.2	663.3	665.9	3.92	1.01	-3.79	3.6	15.8
13,685.0	91.54	4.74	12,847.5	759.1	672.9	2.66	2.39	1.19	2.7	9.9
13,780.0	91.63	1.05	12,844.9	853.9	677.7	3.88	0.09	-3.88	0.0	4.6
13,875.0	88.81	357.01	12,844.5	948.8	676.1	5.19	-2.97	-4.25	-0.5	5.7
13,971.0	87.93	354.99	12,847.3	1,044.6	669.4	2.29	-0.92	-2.10	2.0	12.0
14,066.0	88.72	357.98	12,850.0	1,139.3	663.5	3.25	0.83	3.15	4.7	17.3
14,161.0	87.76	356.75	12,853.0	1,234.2	659.2	1.64	-1.01	-1.29	7.4	21.2
14,257.0	88.72	359.73	12,855.9	1,330.1	656.2	3.26	1.00	3.10	10.2	23.7
14,293.0	88.72	0.17	12,856.7	1,366.1	656.2	1.22	0.00	1.22	11.0	23.5
14,388.0	90.40	0.35	12,857.4	1,461.1	656.6	1.78	1.77	0.19	11.6	22.6
14,483.0	91.36	359.73	12,856.0	1,556.1	656.7	1.20	1.01	-0.65	10.0	22.1
14,578.0	92.07	0.35	12,853.1	1,651.0	656.8	0.99	0.75	0.65	7.0	21.6
14,674.0	92.86	359.29	12,849.0	1,746.9	656.5	1.38	0.82	-1.10	2.7	21.4
14,769.0	92.68	0.09	12,844.4	1,841.8	656.0	0.86	-0.19	0.84	-2.0	21.4
14,865.0	91.10	359.21	12,841.2	1,937.7	655.4	1.88	-1.65	-0.92	-5.3	21.5
14,960.0	90.75	358.77	12,839.7	2,032.7	653.7	0.59	-0.37	-0.46	-7.0	22.7
15,055.0	88.84	0.44	12,840.2	2,127.7	653.0	2.83	-2.22	1.76	-6.7	22.9



**EOG Resources**  
Midland Final PVA

Company:	EOG Resources - Midland	Local Co-ordinate Reference:	Well #740H
Project:	Lea County, NM (NAD 83 NME)	TVD Reference:	KB = 25 @ 3516.0usft (M7502)
Site:	Dauntless 7 Fed	MD Reference:	KB = 25 @ 3516.0usft (M7502)
Well:	#740H	North Reference:	Grid
Wellbore:	OH	Survey Calculation Method:	Minimum Curvature
Design:	OH	Database:	EDM 5000.14

MD (usft)	Inc (°)	Azi (azimuth) (°)	TVD (usft)	N/S (usft)	E/W (usft)	DLeg (°/100usft)	Build (°/100usft)	Turn (°/100usft)	High to Plan (usft)	Right to Plan (usft)
15,151.0	87.49	359.73	12,843.5	2,223.7	653.2	1.41	-1.20	-0.74	-3.6	22.3
15,246.0	87.41	359.65	12,847.7	2,318.6	652.7	0.12	-0.08	-0.08	0.5	22.3
15,342.0	88.55	359.38	12,851.1	2,414.5	651.9	1.22	1.19	-0.28	3.7	22.7
15,437.0	90.48	0.79	12,851.9	2,509.5	652.0	2.52	2.03	1.48	4.4	22.1
15,532.0	90.22	359.21	12,851.3	2,604.5	652.0	1.69	-0.27	-1.66	3.7	21.6
15,627.0	92.24	359.29	12,849.3	2,699.4	650.8	2.13	2.13	0.08	1.5	22.4
15,723.0	90.84	359.65	12,846.7	2,795.4	649.9	1.51	-1.46	0.37	-1.3	22.8
15,818.0	88.99	0.17	12,846.8	2,890.4	649.7	2.02	-1.95	0.55	-1.3	22.4
15,913.0	88.72	1.23	12,848.7	2,985.4	650.9	1.15	-0.28	1.12	0.5	20.8
16,009.0	92.15	3.95	12,848.0	3,081.2	655.2	4.56	3.57	2.83	-0.4	16.0
16,104.0	89.69	1.84	12,846.5	3,176.1	660.0	3.41	-2.59	-2.22	-2.1	10.7
16,199.0	90.92	2.19	12,846.0	3,271.0	663.3	1.35	1.29	0.37	-2.7	6.9
16,295.0	87.58	0.44	12,847.2	3,367.0	665.6	3.93	-3.48	-1.82	-1.6	4.2
16,390.0	88.46	0.44	12,850.5	3,461.9	666.3	0.93	0.93	0.00	1.5	3.0
16,414.3	89.02	1.11	12,851.0	3,486.3	666.6	3.61	2.32	2.77	2.0	2.6
TGT#1 (DL 7 Fed #740H)										
16,465.0	90.66	3.07	12,851.2	3,556.9	669.2	3.61	2.32	2.77	2.1	-0.3
16,581.0	89.25	0.00	12,851.3	3,652.8	671.8	3.52	-1.47	-3.20	2.0	-3.4
16,676.0	91.45	358.77	12,850.7	3,747.8	670.7	2.65	2.32	-1.29	1.2	-2.8
16,772.0	87.58	356.31	12,851.5	3,843.7	666.6	4.78	-4.03	-2.56	1.8	0.8
16,867.0	85.91	355.95	12,856.9	3,938.3	660.2	1.80	-1.76	-0.38	6.9	6.8
16,962.0	87.67	356.66	12,862.2	4,033.0	654.1	2.00	1.85	0.75	12.0	12.4
17,058.0	89.78	357.54	12,864.4	4,128.8	649.3	2.38	2.20	0.92	13.8	16.8
17,154.0	90.75	359.38	12,863.9	4,224.8	646.7	2.17	1.01	1.92	13.1	18.9
17,249.0	90.31	359.38	12,863.1	4,319.8	645.6	0.46	-0.46	0.00	11.8	19.4
17,344.0	92.33	3.16	12,860.9	4,414.7	647.8	4.51	2.13	3.98	9.2	16.9
17,440.0	91.36	0.44	12,857.8	4,510.6	650.8	3.01	-1.01	-2.83	5.8	13.4



EOG Resources  
Midland Final PVA

Company:	EOG Resources - Midland	Local Co-ordinate Reference:	Well #740H
Project:	Lea County, NM (NAD 83 NME)	TVD Reference:	KB = 25 @ 3516.0usft (M7502)
Site:	Dauntless 7 Fed	MD Reference:	KB = 25 @ 3516.0usft (M7502)
Well:	#740H	North Reference:	Grid
Wellbore:	OH	Survey Calculation Method:	Minimum Curvature
Design:	OH	Database:	EDM 5000.14

MD (usft)	Inc (°)	Azi (azimuth) (°)	TVD (usft)	N/S (usft)	EW (usft)	DLeg (°/100usft)	Build (°/100usft)	Turn (°/100usft)	High to Plan (usft)	Right to Plan (usft)
17,535.0	90.31	359.21	12,856.4	4,605.6	650.5	1.70	-1.11	-1.29	4.0	13.2
17,630.0	93.12	0.70	12,853.6	4,700.5	650.4	3.35	2.96	1.57	0.7	12.8
17,726.0	91.45	1.49	12,849.7	4,796.4	652.2	1.92	-1.74	0.82	-3.6	10.5
17,821.0	89.25	359.21	12,849.1	4,891.4	652.8	3.23	-2.32	-2.40	-4.7	9.4
17,916.0	91.71	1.05	12,848.3	4,986.4	653.0	3.23	2.59	1.94	-6.0	8.8
18,012.0	89.34	0.09	12,847.5	5,082.4	654.0	2.66	-2.47	-1.00	-7.5	7.3
18,107.0	83.98	358.06	12,853.0	5,177.1	652.5	6.03	-5.64	-2.14	-2.5	8.4
18,203.0	86.44	359.12	12,861.0	5,272.8	650.1	2.79	2.56	1.10	4.9	10.3
18,298.0	88.99	359.12	12,864.8	5,367.7	648.6	2.68	2.68	0.00	8.1	11.3
18,393.0	90.22	359.21	12,865.5	5,462.7	647.3	1.30	1.29	0.09	8.1	12.2
18,489.0	90.13	0.44	12,865.2	5,558.7	647.0	1.28	-0.09	1.28	7.1	12.0
18,584.0	89.87	359.65	12,865.2	5,653.7	647.0	0.88	-0.27	-0.83	6.5	11.5
18,622.2	90.30	358.28	12,865.1	5,691.8	646.4	3.77	1.13	-3.59	6.1	12.0
TGT#2 (DL 7 Fed #740H)										
18,638.0	90.48	357.71	12,865.0	5,707.6	645.8	3.77	1.13	-3.59	5.9	12.4
18,733.0	90.75	357.80	12,864.0	5,802.6	642.1	0.30	0.28	0.09	4.2	15.7
18,829.0	91.36	359.82	12,862.2	5,898.5	640.1	2.20	0.64	2.10	1.7	17.2
18,924.0	90.31	359.91	12,860.8	5,993.5	639.9	1.11	-1.11	0.09	-0.4	17.0
19,020.0	90.40	0.44	12,860.2	6,089.5	640.2	0.56	0.09	0.55	-1.7	16.2
19,115.0	91.19	359.82	12,858.9	6,184.5	640.4	1.06	0.83	-0.65	-3.6	15.5
19,211.0	89.69	359.91	12,858.2	6,280.5	640.1	1.57	-1.56	0.09	-5.0	15.3
19,306.0	90.40	359.91	12,858.1	6,375.5	640.0	0.75	0.75	0.00	-5.8	15.0
19,401.0	89.52	0.00	12,858.2	6,470.5	639.9	0.93	-0.93	0.09	-6.3	14.6
19,497.0	89.96	359.82	12,858.6	6,566.5	639.8	0.50	0.46	-0.19	-6.5	14.2
19,592.0	91.54	1.93	12,857.4	6,661.5	641.2	2.77	1.66	2.22	-8.4	12.3
19,687.0	86.79	358.77	12,858.7	6,756.4	641.8	6.00	-5.00	-3.33	-7.6	11.3
19,783.0	87.14	359.03	12,863.8	6,852.3	640.0	0.45	0.36	0.27	-3.1	12.6

RECD



EOG Resources  
Midland Final PVA

Company:	EOG Resources - Midland	Local Co-ordinate Reference:	Well #740H
Project:	Lea County, NM (NAD 83 NME)	TVD Reference:	KB = 25 @ 3516.0usft (M7502)
Site:	Dauntless 7 Fed	MD Reference:	KB = 25 @ 3516.0usft (M7502)
Well:	#740H	North Reference:	Grid
Wellbore:	OH	Survey Calculation Method:	Minimum Curvature
Design:	OH	Database:	EDM 5000.14

MD (usft)	Inc (°)	Azi (azimuth) (°)	TVD (usft)	N/S (usft)	E/W (usft)	DLeg (°/100usft)	Build (°/100usft)	Turn (°/100usft)	High to Plan (usft)	Right to Plan (usft)
19,878.0	87.32	358.24	12,868.4	6,947.1	637.7	0.85	0.19	-0.83	0.9	14.4
19,973.0	87.14	359.03	12,873.0	7,042.0	635.4	0.85	-0.19	0.83	4.9	16.2
20,068.0	88.64	359.38	12,876.5	7,136.9	634.1	1.62	1.58	0.37	7.9	17.1
20,129.6	90.44	0.17	12,877.0	7,198.5	633.9	3.20	2.93	1.28	8.0	17.0
TGT#3 (DL 7 Fed #740H)										
20,164.0	91.45	0.61	12,876.4	7,232.9	634.1	3.20	2.93	1.28	7.2	16.6
20,259.0	87.67	359.85	12,877.2	7,327.9	634.3	4.11	-3.98	-1.01	7.4	15.9
20,355.0	88.11	0.88	12,880.7	7,423.8	634.8	1.36	0.46	1.28	10.4	15.0
20,450.0	90.84	1.23	12,881.6	7,518.8	636.5	2.90	2.87	0.37	10.7	12.8
20,545.0	92.51	2.37	12,878.8	7,613.7	639.5	2.13	1.76	1.20	7.3	9.3
20,641.0	89.69	0.88	12,876.9	7,709.6	642.2	3.32	-2.94	-1.55	4.8	6.1
20,736.0	89.08	1.05	12,878.0	7,804.6	643.8	0.67	-0.64	0.18	5.2	4.0
20,831.0	89.96	1.58	12,878.8	7,899.6	646.0	1.08	0.93	0.56	5.4	1.4
20,927.0	89.43	0.00	12,879.3	7,995.6	647.3	1.74	-0.55	-1.65	5.3	-0.4
21,022.0	89.96	359.56	12,879.8	8,090.5	647.0	0.73	0.56	-0.46	5.1	-0.5
21,117.0	91.45	0.96	12,878.6	8,185.5	647.4	2.15	1.57	1.47	3.3	-1.4
21,213.0	88.99	357.45	12,878.2	8,281.5	646.1	4.46	-2.56	-3.66	2.2	-0.6
21,308.0	88.72	356.83	12,880.1	8,376.4	641.3	0.71	-0.28	-0.65	3.5	3.7
21,403.0	88.02	357.54	12,882.8	8,471.2	636.7	1.05	-0.74	0.75	5.5	7.9
21,499.0	89.52	357.98	12,884.9	8,567.1	632.9	1.63	1.56	0.46	6.8	11.2
21,594.0	91.10	357.62	12,884.4	8,662.0	629.3	1.71	1.66	-0.38	5.6	14.3
21,616.4	90.89	358.04	12,884.0	8,684.5	628.4	2.07	-0.93	1.85	5.0	15.1
TGT#4 (DL 7 Fed #740H)										
21,689.0	90.22	359.38	12,883.3	8,757.0	626.8	2.07	-0.93	1.85	3.7	16.4
21,785.0	90.31	359.03	12,882.9	8,853.0	625.4	0.38	0.09	-0.36	2.5	17.2
21,880.0	88.90	0.79	12,883.5	8,948.0	625.3	2.37	-1.48	1.85	2.2	16.9
21,975.0	87.05	0.26	12,886.9	9,042.9	626.2	2.03	-1.95	-0.56	4.7	15.6



**EOG Resources**  
Midland Final PVA

Company:	EOG Resources - Midland	Local Co-ordinate Reference:	Well #740H
Project:	Lea County, NM (NAD 83 NME)	TVD Reference:	KB = 25 @ 3516.0usft (M7502)
Site:	Dauntless 7 Fed	MD Reference:	KB = 25 @ 3516.0usft (M7502)
Well:	#740H	North Reference:	Grid
Wellbore:	OH	Survey Calculation Method:	Minimum Curvature
Design:	OH	Database:	EDM 5000.14

MD (usft)	Inc. (°)	Azi (azimuth) (°)	TVD (usft)	N/S (usft)	E/W (usft)	DLeg (°/100usft)	Build (°/100usft)	Turn (°/100usft)	High to Plan (usft)	Right to Plan (usft)
22,070.0	89.78	0.96	12,889.5	9,137.9	627.2	2.97	2.87	0.74	6.3	14.1
22,166.0	90.13	1.76	12,889.6	9,233.8	629.5	0.91	0.36	0.83	5.3	11.3
22,261.0	89.08	0.96	12,890.2	9,328.8	631.7	1.39	-1.11	-0.84	4.8	8.6
22,357.0	92.86	3.43	12,888.6	9,424.7	635.4	4.70	3.94	2.57	1.9	4.5
22,452.0	92.42	0.17	12,884.2	9,519.5	638.4	3.46	-0.46	-3.43	-3.7	1.0
22,547.0	88.90	359.12	12,883.1	9,614.5	637.8	3.87	-3.71	-1.11	-6.1	1.1
22,643.0	89.08	359.03	12,884.8	9,710.5	636.2	0.21	0.19	-0.09	-5.9	2.2
22,738.0	89.96	358.86	12,885.6	9,805.5	634.5	0.94	0.93	-0.18	-6.5	3.5
22,833.0	90.22	359.82	12,885.5	9,900.4	633.4	1.05	0.27	1.01	-8.2	4.1
22,929.0	90.31	0.88	12,885.0	9,996.4	634.0	1.11	0.09	1.10	-10.2	3.1
23,024.0	90.48	1.14	12,884.4	10,091.4	635.6	0.33	0.18	0.27	-12.6	0.9
23,076.0	91.63	1.58	12,883.4	10,143.4	636.9	2.37	2.21	0.85	-14.5	-0.6
Final MWD Survey (MD=23076.0')										
23,137.0	91.63	1.58	12,881.7	10,204.4	638.6	0.00	0.00	0.00	-17.3	-2.5
Final Projection to Bit (MD=23137.0') - PBHL(DL 7 Fed #740H)										

Design Annotations				
Measured Depth (usft)	Vertical Depth (usft)	Local Coordinates		Comment
		+N/-S (usft)	+E/-W (usft)	
12,391.2	12,363.3	-147.3	420.4	HL Crossing, MD:12391.2', TVD:12363.3', N/S:-147.3', E/W:420.4', INC:1.22
23,076.0	12,883.4	10,143.4	636.9	Final MWD Survey (MD=23076.0')
23,137.0	12,881.7	10,204.4	638.6	Final Projection to Bit (MD=23137.0')

Checked By: \_\_\_\_\_ Approved By: \_\_\_\_\_ Date: \_\_\_\_\_

I certify this survey to be true and correct to the best of my belief and knowledge.

Kary Maddox      10/01/2020  
Signed                                  Date



Lea County, NM (NAD 83 NME)

Dauntless 7 Fed #740H

M7502

Plan #1

PROJECT DETAILS: Lea County, NM (NAD 83 NME)

Geodetic System: US State Plane 1983  
Datum: North American Datum 1983  
Ellipsoid: GRS 1980  
Zone: New Mexico Eastern Zone  
System Datum: Mean Sea Level

WELL DETAILS: #740H

KB = 25 @ 3516.0usft (M7502) 3491.0  
Northing 41881.00 Easting 763851.00 Longitude 103° 36' 52.003 W

### SECTION DETAILS

Sec	MD	Inc	Azi	TVD	+N/-S	+E/-W	Dleg	TFace	VSect
1	1183.0	0.20	103.28	1182.9	9.1	4.8	0.00	0.00	9.4
2	3100.1	0.20	103.28	3100.0	7.5	11.4	0.00	0.00	8.2
3	3426.4	6.73	114.80	3425.6	-0.6	29.4	2.00	11.87	1.2
4	7214.4	6.73	114.80	7187.5	-186.7	432.1	0.00	0.00	-159.5
5	7550.7	0.00	0.00	7523.0	-195.0	450.0	2.00	180.00	-166.6
6	12394.2	0.00	0.00	12366.5	-195.0	450.0	0.00	0.00	-166.6
7	13143.4	89.91	18.98	12844.0	255.8	605.0	12.00	18.98	292.9
8	13625.1	89.91	359.72	12844.7	728.8	682.9	4.00	-90.01	769.8
9	16382.5	89.91	359.72	12849.0	3486.2	669.2	0.00	0.00	3521.1
10	18588.5	89.57	359.72	12859.0	5692.1	658.3	0.02	179.30	5722.0
11	20094.9	89.67	359.72	12869.0	7198.5	650.9	0.01	-2.38	7225.0
12	21581.3	89.56	359.72	12879.0	8684.8	643.5	0.01	179.82	8708.0
13	23101.6	88.93	359.72	12899.0	10205.0	636.0	0.04	179.68	10224.8

### WELLBORE TARGET DETAILS (MAP CO-ORDINATES)

Name	TVD	+N/-S	+E/-W	Northing	Easting
KOP(DL 7 Fed #710H)	12366.5	-195.0	450.0	41655.00	764301.00
FTPL(DL 7 Fed #740H)	12844.0	-145.0	686.0	414736.00	764537.00
TGT1(DL 7 Fed #740H)	12849.0	3486.2	669.2	416307.20	764520.20
TGT2(DL 7 Fed #740H)	12859.0	5692.1	658.3	420573.10	764509.32
TGT3(DL 7 Fed #740H)	12869.0	7198.5	650.9	422079.50	764501.88
TGT4(DL 7 Fed #740H)	12879.0	8684.8	643.5	423565.80	764494.50
PEHL(DL 7 Fed #740H)	12899.0	10205.0	636.0	425056.00	764487.00

