

District I  
1625 N. French Dr., Hobbs, NM 88240  
Phone: (575) 393-6161 Fax: (575) 393-0720  
District II  
811 S. First St., Artesia, NM 88210  
Phone: (575) 748-1283 Fax: (575) 748-9720  
District III  
1000 Rio Brazos Road, Aztec, NM 87410  
Phone: (505) 334-6178 Fax: (505) 334-6170  
District IV  
1220 S. St. Francis Dr., Santa Fe, NM 87505  
Phone: (505) 476-3460 Fax: (505) 476-3462

State of New Mexico  
Energy, Minerals & Natural Resources  
Department  
OIL CONSERVATION DIVISION  
1220 South St. Francis Dr.  
Santa Fe, NM 87505

FORM C-102

Revised August 1, 2011

Submit one copy to appropriate

District Office

☐ AMENDED REPORT

## WELL LOCATION AND ACREAGE DEDICATION PLAT

<sup>1</sup> API Number 30-025-47178		<sup>2</sup> Pool Code 98180	<sup>3</sup> Pool Name WC025 G09 S253309P; UPPER WOLFCAMP
<sup>4</sup> Property Code 328239	<sup>5</sup> Property Name GREEN DRAKE 21 FED COM		<sup>6</sup> Well Number 708H
<sup>7</sup> OGRID No. 7377	<sup>8</sup> Operator Name EOG RESOURCES, INC.		<sup>9</sup> Elevation 3368'

<sup>10</sup>Surface Location

UL or lot no.	Section	Township	Range	Lot Idn	Feet from the	North/South line	Feet from the	East/West line	County
0	21	25-S	33-E	-	270'	SOUTH	2143'	EAST	LEA

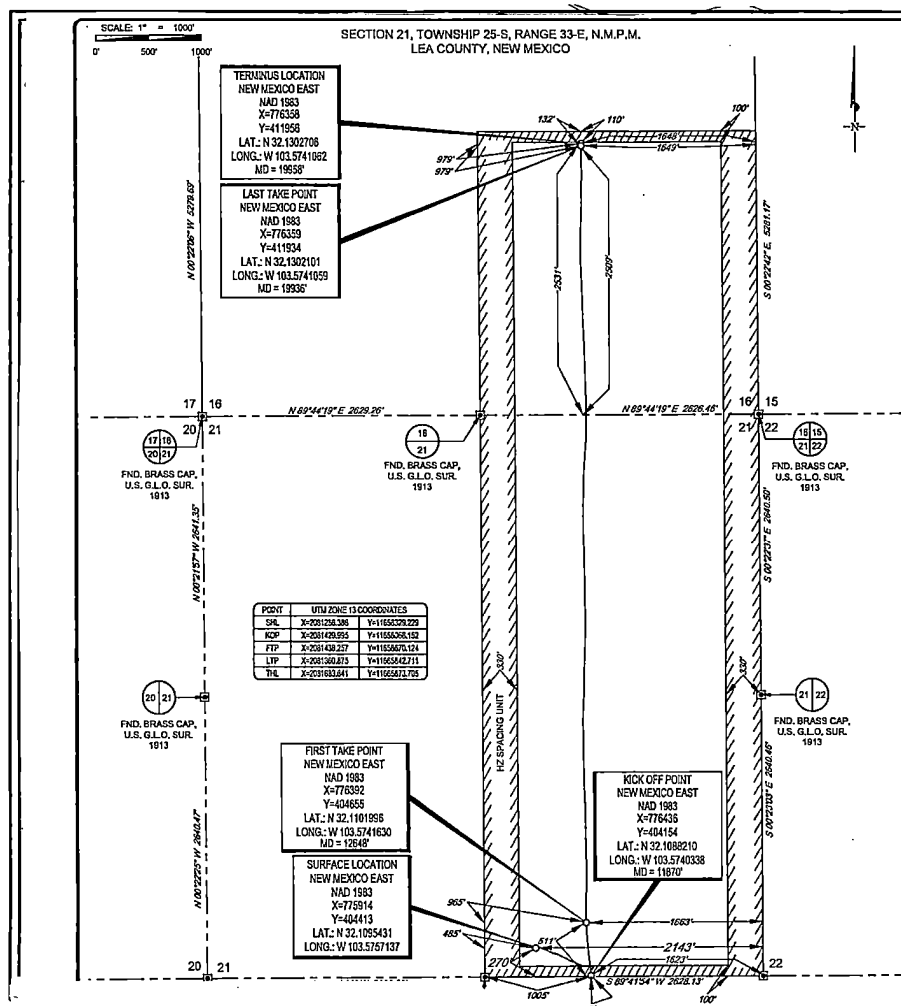
<sup>11</sup>Bottom Hole Location If Different From Surface

SL

UL or lot no.	Section	Township	Range	Lot Idn	Feet from the	North/South line	Feet from the	East/West line	County
J	16	25-S	33-E	-	2531'	SOUTH	1648'	EAST	LEA

<sup>12</sup> Dedicated Acres 480.00	<sup>13</sup> Joint or Infill	<sup>14</sup> Consolidation Code	<sup>15</sup> Order No.
---	-------------------------------	----------------------------------	-------------------------

No allowable will be assigned to this completion until all interests have been consolidated or a non-standard unit has been approved by the division.

<sup>17</sup>OPERATOR CERTIFICATION

I hereby certify that the information contained herein is true and complete to the best of my knowledge and belief, and that this organization either owns a working interest or unleased mineral interest in the land including the proposed bottom hole location or has a right to drill this well at this location pursuant to a contract with an owner of such a mineral or working interest, or to a voluntary pooling agreement or a compulsory pooling order heretofore entered by the division.

*Kay Maddox* 11/11/2020  
Signature Date

KAY MADDOX

Printed Name

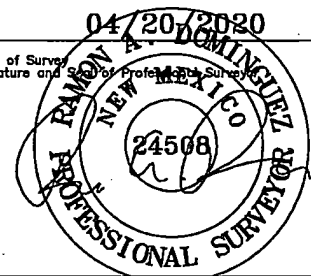
kay\_maddox@eogresources.com

E-mail Address

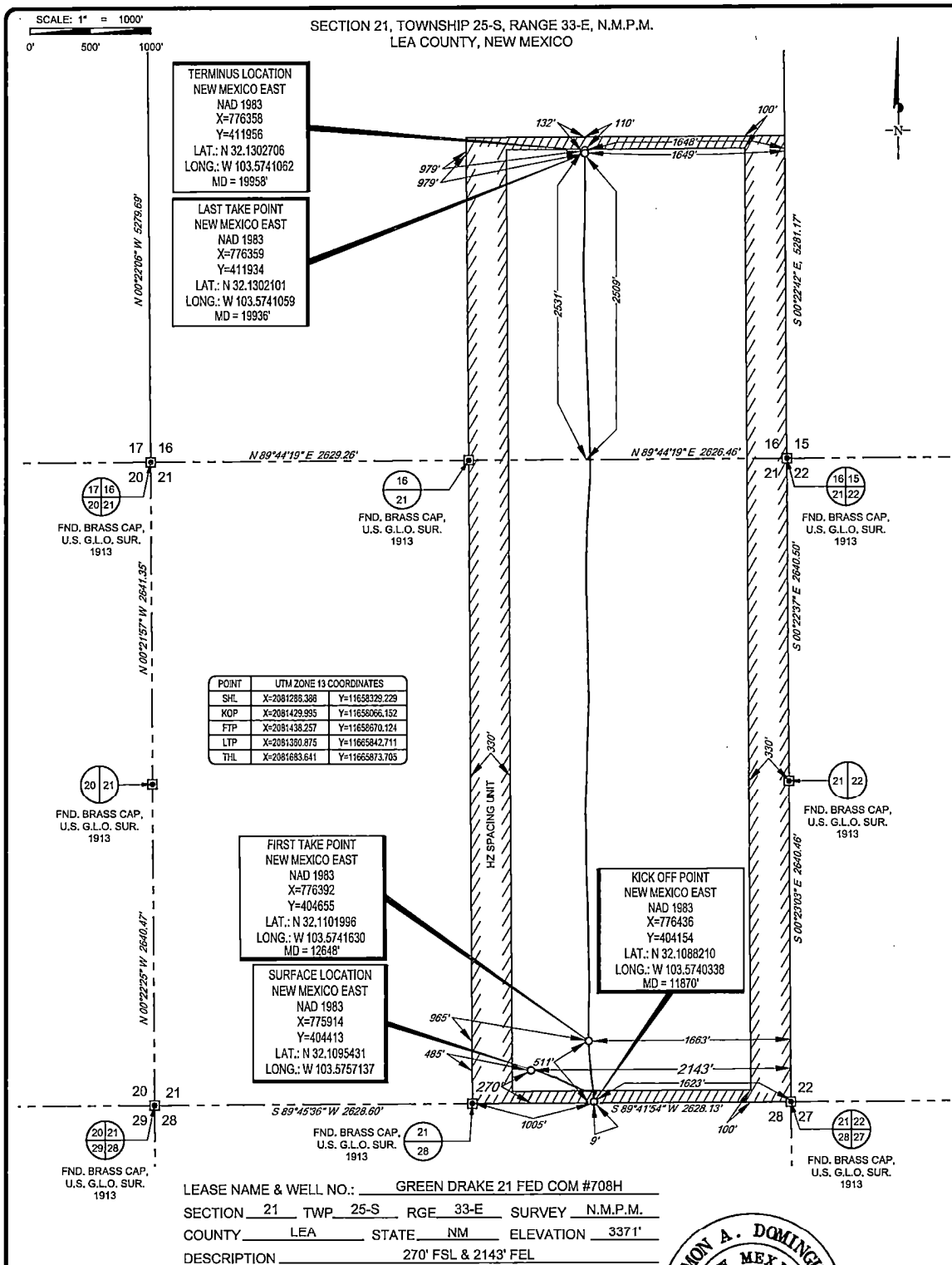
<sup>18</sup>SURVEYOR CERTIFICATION

I hereby certify that the well location shown on this plat was plotted from field notes of actual surveys made by me or under my supervision, and that the same is true to the best of my belief.

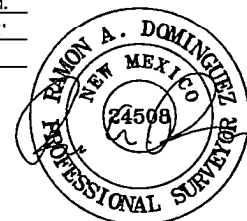
04/20/2020  
Date of Survey  
Signature and Seal of Professional Surveyor



Certificate Number



**TOPOGRAPHIC**  
LOYALTY INNOVATION LEGACY  
1400 EVERMAN PARKWAY, Ste. 140 • FT. WORTH, TEXAS 76140  
TELEPHONE: (817) 744-7512 • FAX: (817) 744-7254  
TEXAS FIRM REGISTRATION NO. 10042504  
WWW.TOPOGRAPHIC.COM



Ramon A. Dominguez, P.S. No. 24508  
OCTOBER 19, 2020

**eg resources, inc.**

<div>GREEN DRAKE 21 FED COM #708H AS-COMPLETED</div>		REVISION:		<div>NOTES:</div> <div>1. ORIGINAL DOCUMENT SIZE: 8.5" X 14"</div> <div>2. ALL BEARINGS, DISTANCES, AND COORDINATE VALUES CONTAINED HEREIN ARE GRID BASED UPON THE NEW MEXICO COORDINATE SYSTEM OF 1983, EAST ZONE, U.S. SURVEY FEET.</div> <div>3. THIS WELL LOCATION SHOWN HEREON HAS BEEN SURVEYED ON THE GROUND UNDER MY SUPERVISION AND PREPARED ACCORDING TO THE EVIDENCE FOUND AT THE TIME OF SURVEY, AND DATA PROVIDED BY EOG RESOURCES, INC. THIS CERTIFICATION IS MADE AND LIMITED TO THOSE PERSONS OR ENTITIES SHOWN ON THE FACE OF THIS PLAT AND IS NON-TRANSFERABLE. THIS SURVEY IS CERTIFIED FOR THIS TRANSACTION ONLY.</div>
DATE:	10/19/2020			
FILE:	AD_GREEN_DRAKE_16_FED_COM_708H			
DRAWN BY:	A.V.F.			
SHEET :	1 OF 1			

Intent ☐ As Drilled ☐ XXX

API #  
30-025-47178

Operator Name:  
EOG RESOURCES, INC

Property Name:  
GREEN DRAKE 21 FEDERAL COM

Well Number  
708H

Kick Off Point (KOP)

UL O	Section 21	Township 25S	Range 33E	Lot	Feet 9	From N/S SOUTH	Feet 1623	From E/W EAST	County LEA
Latitude 32.1088210					Longitude 103.5740338				NAD 1983

First Take Point (FTP)

UL O	Section 21	Township 25S	Range 33E	Lot	Feet 511	From N/S SOUTH	Feet 1663	From E/W EAST	County LEA
Latitude 32.1101996					Longitude 103.5741630				NAD 1983

Last Take Point (LTP)

UL J	Section 16	Township 25S	Range 33E	Lot	Feet 2509	From N/S SOUTH	Feet 1649	From E/W EAST	County LEA
Latitude 32.1302101					Longitude 103.5741059				NAD 1983

Is this well the defining well for the Horizontal Spacing Unit?

☐ NO

Is this well an infill well?

☐ YES

If infill is yes please provide API if available, Operator Name and well number for Defining well for Horizontal Spacing Unit.

API #  
30-025-47179

Operator Name:  
EOG RESOURCES, INC

Property Name:  
GREEN DRAKE 21 FEDERAL COM

Well Number  
#709H

KZ 06/29/2018



## **EOG Resources - Midland**

Lea County, NM (NAD 83 NME)  
Green Drake 21 Fed Com  
#708H  
OH

Design: OH

## **Midland PVA**

10 November, 2020



**EOG Resources**  
Midland PVA

Company: EOG Resources - Midland		Local Co-ordinate Reference: Well #708H	
Project: Lea County, NM (NAD 83 NME)		TVD Reference: KB = 22' @ 3390.0usft	
Site: Green Drake 21 Fed Com		MD Reference: KB = 22' @ 3390.0usft	
Well: #708H		North Reference: Grid	
Wellbore: OH		Survey Calculation Method: Minimum Curvature	
Design: OH		Database: EDM	

Project: Lea County, NM (NAD 83 NME)			
Map System:	US State Plane 1983	System Datum:	Mean Sea Level
Geo Datum:	North American Datum 1983		
Map Zone:	New Mexico Eastern Zone		

Site: Green Drake 21 Fed Com			
Site Position:	Northings:	404,412.00 usft	Latitude: 32° 6' 34.354 N
From: Map	Easting:	775,848.00 usft	Longitude: 103° 34' 33.335 W
Position Uncertainty:	Slot Radius:	13-3/16 "	Grid Convergence: 0.40 "

Well: #708H			
Well Position	+N/-S	0.0 usft	Northings: 404,413.00 usft
	+E/-W	0.0 usft	Easting: 775,914.00 usft
Position Uncertainty		0.0 usft	Wellhead Elevation: usft
			Ground Level: 3,368.0 usft

Wellbore: OH					
Magnetics	Model Name	Sample Date	Declination	Dip Angle	Field Strength
	IGRF2020	7/15/2020	(°)	(°)	(nT)
			6.65	59.83	47,521.55003259

Design: OH					
Audit Notes:					
Version:	1.0	Phase:	ACTUAL	Tie On Depth:	0.0
Vertical Section:	Depth From (TVD)	+N/-S	+E/-W	Direction	
	(usft)	(usft)	(usft)	(°)	
	0.0	0.0	0.0	3.36	

Survey Program Date: 7/14/2020					
From	To	Survey (Wellbore)	Tool Name	Description	
(usft)	(usft)				
166.0	19,958.0	Drilltech MWD #1 (OH)	EOG MWD+IFR1	MWD + IFR1	



EOG Resources  
Midland PVA

Company:	EOG Resources - Midland	Local Co-ordinate Reference:	Well #708H
Project:	Lea County, NM (NAD 83 NME)	TVD Reference:	KB = 22' @ 3390.0usft
Site:	Green Drake 21 Fed Com	MD Reference:	KB = 22' @ 3390.0usft
Well:	#708H	North Reference:	Grid
Wellbore:	OH	Survey Calculation Method:	Minimum Curvature
Design:	OH	Database:	EDM

Survey											
MD (usft)	Inc (")	Azi (azimuth) (")	TVD (usft)	N/S (usft)	E/W (usft)	DLeg ("/100usft)	Build ("/100usft)	Turn ("/100usft)	High to Plan (usft)	Right to Plan (usft)	
0.0	0.00	0.00	0.0	0.0	0.0	0.00	0.00	0.00	0.0	0.0	0.0
166.0	1.85	216.79	166.0	-2.1	-1.6	1.11	1.11	0.00	0.0	0.0	0.0
288.0	2.90	217.23	287.9	-6.2	-4.7	0.86	0.86	0.36	0.0	0.0	0.0
410.0	3.61	213.98	409.7	-11.8	-8.7	0.60	0.58	-2.66	0.0	0.0	0.0
600.0	2.11	216.09	599.4	-19.6	-14.1	0.79	-0.79	1.11	0.0	0.0	0.0
791.0	0.97	25.90	790.4	-21.0	-15.4	1.61	-0.60	88.91	0.0	0.0	0.0
886.0	3.52	34.07	885.3	-17.9	-13.4	2.70	2.68	8.60	0.0	0.0	0.0
982.0	4.75	28.44	981.1	-11.9	-9.9	1.35	1.28	-5.86	0.0	0.0	0.0
1,128.0	3.78	49.19	1,126.7	-3.5	-3.4	1.24	-0.66	14.21	0.0	0.0	0.0
1,265.0	4.13	54.02	1,263.3	2.4	4.0	0.35	0.26	3.53	-0.5	0.3	
1,456.0	6.68	87.33	1,453.5	7.0	20.7	2.08	1.34	17.44	-2.9	6.2	
1,646.0	7.03	109.13	1,642.2	3.7	42.7	1.37	0.18	11.47	-2.8	12.8	
1,837.0	6.51	112.12	1,831.9	-4.3	63.8	0.33	-0.27	1.57	-4.9	14.5	
2,027.0	6.07	112.56	2,020.7	-12.2	83.1	0.23	-0.23	0.23	-6.0	15.3	
2,218.0	5.10	113.17	2,210.8	-19.4	100.2	0.51	-0.51	0.32	-4.6	16.1	
2,408.0	7.21	113.00	2,399.7	-27.4	118.9	1.11	1.11	-0.09	-5.4	16.6	
2,599.0	7.30	113.08	2,589.2	-36.8	141.1	0.05	0.05	0.04	-9.7	17.2	
2,789.0	7.21	110.01	2,777.6	-45.6	163.4	0.21	-0.05	-1.62	-15.1	17.7	
2,980.0	7.21	104.56	2,967.1	-52.7	186.3	0.36	0.00	-2.85	-21.2	18.6	
3,170.0	8.44	115.19	3,155.4	-61.7	210.5	1.00	0.65	5.59	-23.4	24.2	
3,361.0	7.83	116.60	3,344.5	-73.5	234.8	0.34	-0.32	0.74	-30.2	24.5	
3,552.0	6.68	116.33	3,533.9	-84.2	256.4	0.60	-0.60	-0.14	-34.7	23.7	
3,743.0	5.63	111.41	3,723.8	-92.6	275.0	0.61	-0.55	-2.58	-37.3	20.9	
3,933.0	5.45	110.89	3,912.9	-99.2	292.1	0.10	-0.09	-0.27	-36.2	21.8	
4,123.0	7.12	125.21	4,101.8	-109.2	310.2	1.20	0.88	7.54	-30.9	28.7	
4,314.0	8.97	108.25	4,290.9	-120.7	334.0	1.57	0.97	-8.88	-44.5	17.3	
4,504.0	8.88	110.36	4,478.6	-130.4	361.8	0.18	-0.05	1.11	-53.8	21.0	



EOG Resources  
Midland PVA

Company:	EOG Resources - Midland	Local Co-ordinate Reference:	Well #708H
Project:	Lea County, NM (NAD 83 NME)	TVD Reference:	KB = 22' @ 3390.0usft
Site:	Green Drake 21 Fed Com	MD Reference:	KB = 22' @ 3390.0usft
Well:	#708H	North Reference:	Grid
Wellbore:	OH	Survey Calculation Method:	Minimum Curvature
Design:	OH	Database:	EDM

MD (usft)	Inc (°)	Azi (azimuth) (°)	TVD (usft)	N/S (usft)	E/W (usft)	DLeg (°/100usft)	Build (°/100usft)	Turn (°/100usft)	High to Plan (usft)	Right to Plan (usft)
4,695.0	10.46	119.41	4,666.9	-144.1	390.8	1.15	0.83	4.74	-62.1	29.9
4,885.0	7.83	114.93	4,854.5	-156.0	417.5	1.43	-1.38	-2.36	-74.8	23.6
5,076.0	7.30	101.22	5,043.8	-165.8	441.2	0.98	-0.28	-7.18	-83.9	6.8
5,266.0	7.30	95.42	5,232.3	-169.3	465.1	0.39	0.00	-3.05	-89.7	3.6
5,456.0	7.21	91.90	5,420.8	-170.9	489.0	0.24	-0.05	-1.85	-95.6	5.0
5,647.0	6.60	97.53	5,610.4	-172.7	511.9	0.48	-0.32	2.95	-98.7	21.4
5,837.0	5.10	98.05	5,799.4	-175.3	531.1	0.79	-0.79	0.27	-99.1	28.0
6,028.0	1.58	136.20	5,990.1	-178.4	541.3	2.08	-1.84	19.97	-51.5	81.2
6,218.0	0.79	213.54	6,180.0	-181.4	542.4	0.84	-0.42	40.71	63.1	51.1
6,409.0	0.79	208.88	6,371.0	-183.6	541.0	0.03	0.00	-2.44	54.6	36.5
6,599.0	0.70	216.09	6,561.0	-185.7	539.7	0.07	-0.05	3.79	54.0	18.4
6,790.0	0.70	215.74	6,752.0	-187.6	538.3	0.00	0.00	-0.18	51.4	17.7
6,980.0	0.79	229.27	6,942.0	-189.4	536.7	0.10	0.05	7.12	51.7	5.4
7,171.0	1.06	217.23	7,133.0	-191.7	534.6	0.17	0.14	-6.30	46.3	15.8
7,362.0	1.32	211.43	7,323.9	-194.9	532.4	0.15	0.14	-3.04	40.5	20.2
7,541.0	1.32	206.14	7,502.8	-198.6	530.4	0.07	0.00	-2.96	34.4	23.7
Brushy Top(GD 21 FC #708H)										
7,552.0	1.32	205.81	7,513.9	-198.8	530.3	0.07	0.00	-2.95	34.0	23.9
7,743.0	1.14	346.34	7,704.8	-198.9	528.9	1.21	-0.09	73.58	-11.3	-38.6
7,838.0	1.58	340.37	7,799.8	-196.8	528.2	0.49	0.46	-6.28	-9.4	-39.7
7,933.0	1.23	326.13	7,894.8	-194.7	527.2	0.52	-0.37	-14.99	-1.7	-41.1
8,028.0	0.88	323.41	7,989.8	-193.3	526.2	0.37	-0.37	-2.86	-1.5	-41.2
8,124.0	0.79	315.49	8,085.8	-192.2	525.3	0.15	-0.09	-8.25	2.8	-41.1
8,314.0	0.35	256.26	8,275.8	-191.4	523.8	0.36	-0.23	-31.17	35.5	-19.7
8,504.0	0.53	234.37	8,465.7	-192.0	522.6	0.13	0.09	-11.52	38.9	-5.3
8,695.0	0.79	214.95	8,656.7	-193.6	521.1	0.18	0.14	-10.17	36.3	7.7
8,885.0	1.14	202.73	8,846.7	-198.5	519.6	0.21	0.18	-6.43	30.7	14.9



EOG Resources  
Midland PVA

Company:	EOG Resources - Midland	Local Co-ordinate Reference:	Well #708H
Project:	Lea County, NM (NAD 83 NME)	TVD Reference:	KB = 22' @ 3390.0usft
Site:	Green Drake 21 Fed Com	MD Reference:	KB = 22' @ 3390.0usft
Well:	#708H	North Reference:	Grid
Wellbore:	OH	Survey Calculation Method:	Minimum Curvature
Design:	OH	Database:	EDM

MD (usft)	Inc (°)	Azi (azimuth) (°)	TVD (usft)	N/S (usft)	E/W (usft)	DLeg (°/100usft)	Build (°/100usft)	Turn (°/100usft)	High to Plan (usft)	Right to Plan (usft)
9,075.0	1.06	196.49	9,036.7	-199.9	518.4	0.08	-0.04	-3.28	25.2	17.9
9,266.0	1.23	189.55	9,227.6	-203.6	517.5	0.11	0.09	-3.63	19.1	20.6
9,456.0	1.49	179.70	9,417.6	-208.1	517.2	0.18	0.14	-5.18	10.8	23.3
9,647.0	1.67	169.51	9,608.5	-213.3	517.7	0.17	0.09	-5.34	1.3	24.4
9,837.0	1.06	171.62	9,798.5	-217.8	518.5	0.32	-0.32	1.11	-2.3	24.4
10,028.0	0.88	201.41	9,989.4	-220.9	518.2	0.28	-0.09	15.60	7.1	23.2
10,218.0	0.88	198.07	10,179.4	-223.6	517.2	0.03	0.00	-1.76	2.8	23.5
10,408.0	0.79	171.35	10,370.4	-226.3	517.0	0.21	-0.05	-13.99	-10.7	21.6
10,599.0	3.52	140.50	10,560.2	-232.1	520.9	1.51	1.44	-16.24	-27.2	12.4
10,694.0	1.43	138.22	10,655.1	-235.2	523.5	2.20	-2.20	-2.40	-31.8	11.2
10,789.0	1.23	127.85	10,750.1	-236.8	525.1	0.33	-0.21	-10.92	-35.5	5.1
10,885.0	0.97	95.07	10,846.1	-237.5	526.7	0.70	-0.27	-34.15	-34.2	-15.5
10,980.0	1.85	118.88	10,941.1	-238.3	528.9	1.09	0.93	25.06	-39.8	0.0
11,075.0	1.76	142.79	11,036.0	-240.2	531.1	0.79	-0.09	25.17	-39.3	16.8
11,265.0	2.90	187.88	11,225.9	-247.3	532.2	1.09	0.60	23.73	-22.7	41.7
11,361.0	2.81	205.98	11,321.8	-251.8	530.8	0.94	-0.09	18.85	-13.3	47.5
11,551.0	1.32	229.10	11,511.6	-257.4	527.1	0.88	-0.78	12.17	-0.1	50.7
11,646.0	1.41	232.26	11,606.6	-258.8	525.4	0.12	0.09	3.33	0.4	50.7
11,760.0	3.17	192.80	11,720.5	-262.8	523.6	1.99	1.54	-34.61	-36.1	38.6
11,870.0	6.99	352.18	11,830.3	-259.1	522.0	9.11	3.47	144.89	43.5	-22.4
KOP, MD:11870.0, TVD:11830.3, N/S:-259.1, E/W:522.0, INC:6.99										
11,950.0	14.25	355.49	11,908.9	-244.4	520.6	9.11	9.08	4.13	28.4	-24.6
12,046.0	24.89	357.68	11,999.2	-212.4	518.8	11.11	11.08	2.28	10.5	-24.6
12,135.9	33.04	354.23	12,077.8	-169.0	515.6	9.25	9.06	-3.84	-2.0	-22.1
FTP Crossing, MD:12135.9, TVD:12077.8, N/S:-169.0, E/W:515.6, INC:33.04										
12,141.0	33.50	354.08	12,082.1	-166.2	515.3	9.25	9.10	-2.94	-2.6	-21.9
12,236.0	41.94	351.44	12,157.2	-108.7	507.8	9.04	8.88	-2.78	-12.1	-16.0





EOG Resources  
Midland PVA

Company:	EOG Resources - Midland	Local Co-ordinate Reference:	Well #708H
Project:	Lea County, NM (NAD 83 NME)	TVD Reference:	KB = 22' @ 3390.0usft
Site:	Green Drake 21 Fed Com	MD Reference:	KB = 22' @ 3390.0usft
Well:	#708H	North Reference:	Grid
Wellbore:	OH	Survey Calculation Method:	Minimum Curvature
Design:	OH	Database:	EDM

MD (usft)	Inc (°)	Azi (azimuth) (°)	TVD (usft)	N/S (usft)	E/W (usft)	DLeg (°/100usft)	Build (°/100usft)	Turn (°/100usft)	High to Plan (usft)	Right to Plan (usft)
12,327.8	49.25	353.53	12,221.3	-43.7	499.4	8.13	7.97	2.28	-16.6	-7.7
FTPI(GD 21 FC #708H)										
12,331.0	49.51	353.60	12,223.4	-41.3	499.1	8.13	7.99	2.01	-16.6	-7.4
12,426.0	55.57	355.09	12,281.2	33.7	491.7	6.50	6.38	1.57	-12.4	0.2
12,522.0	67.53	355.88	12,326.8	117.7	485.1	12.48	12.46	0.82	-3.4	6.6
12,617.0	86.35	357.29	12,348.2	209.7	479.7	19.86	19.81	1.48	-0.8	11.5
12,712.0	90.13	358.52	12,351.1	304.6	476.2	4.18	3.98	1.29	-1.1	14.4
12,808.0	92.24	0.72	12,349.1	400.5	475.5	3.17	2.20	2.29	-4.6	14.4
12,903.0	92.24	2.04	12,345.4	495.4	477.8	1.39	0.00	1.39	-9.8	11.5
12,998.0	82.92	1.86	12,349.4	590.2	481.1	9.81	-9.81	-0.19	-7.3	7.7
13,093.0	87.85	359.84	12,357.1	684.8	482.5	5.61	5.19	-2.13	-1.2	5.6
13,189.0	88.72	359.14	12,359.9	780.8	481.6	1.16	0.91	-0.73	0.2	5.8
13,284.0	89.87	358.26	12,361.1	875.8	479.4	1.52	1.21	-0.93	-0.1	7.4
13,379.0	93.03	358.08	12,358.7	970.7	476.4	3.33	3.33	-0.19	-4.0	9.8
13,474.0	89.60	359.75	12,356.5	1,065.6	474.6	4.02	-3.61	1.76	-7.7	10.9
13,569.0	91.01	359.14	12,356.0	1,160.6	473.7	1.62	1.48	-0.64	-9.7	11.2
13,665.0	87.05	358.43	12,357.7	1,256.5	471.7	4.19	-4.12	-0.74	-9.6	12.6
13,711.4	88.00	358.73	12,359.7	1,302.9	470.5	2.14	2.04	0.65	-8.3	13.5
TGT#1(GD 21 FC #708H)										
13,760.0	88.99	359.05	12,360.9	1,351.5	469.6	2.14	2.04	0.65	-7.6	14.1
13,855.0	84.50	356.24	12,366.3	1,446.2	465.7	5.57	-4.73	-2.96	-3.1	17.4
13,950.0	88.81	358.61	12,371.9	1,540.9	461.4	5.18	4.54	2.49	1.8	21.0
14,046.0	90.57	358.26	12,372.4	1,636.9	458.8	1.87	1.83	-0.36	1.5	23.0
14,141.0	90.04	359.31	12,371.9	1,731.8	456.8	1.24	-0.56	1.11	0.1	24.4
14,236.0	88.81	359.58	12,372.8	1,826.8	455.9	1.33	-1.29	0.28	0.3	24.7
14,332.0	90.57	0.72	12,373.4	1,922.8	456.1	2.18	1.83	1.19	0.0	23.8
14,427.0	83.89	356.50	12,377.9	2,017.6	453.8	8.31	-7.03	-4.44	3.6	25.5



EOG Resources  
Midland PVA

Company:	EOG Resources - Midland	Local Co-ordinate Reference:	Well #708H
Project:	Lea County, NM (NAD 83 NME)	TVD Reference:	KB = 22' @ 3390.0usft
Site:	Green Drake 21 Fed Com	MD Reference:	KB = 22' @ 3390.0usft
Well:	#708H	North Reference:	Grid
Wellbore:	OH	Survey Calculation Method:	Minimum Curvature
Design:	OH	Database:	EDM

MD (usft)	Inc (°)	Azi (azimuth) (°)	TVD (usft)	N/S (usft)	E/W (usft)	DLeg (°/100usft)	Build (°/100usft)	Turn (°/100usft)	High to Plan (usft)	Right to Plan (usft)
14,522.0	88.72	359.93	12,384.1	2,112.3	450.9	6.23	5.08	3.61	9.1	27.8
14,617.0	88.29	1.60	12,386.5	2,207.3	452.2	1.81	-0.45	1.76	10.8	25.9
14,712.0	93.03	2.56	12,385.5	2,302.2	455.6	5.09	4.99	1.01	8.8	21.8
14,807.0	91.19	2.04	12,382.0	2,397.0	459.4	2.01	-1.94	-0.55	4.5	17.4
14,903.0	90.13	0.72	12,380.9	2,493.0	461.7	1.76	-1.10	-1.37	2.6	14.5
14,998.0	90.57	0.89	12,380.3	2,588.0	463.1	0.50	0.46	0.18	1.2	12.5
15,093.0	92.77	2.83	12,377.5	2,682.9	466.1	3.09	2.32	2.04	-2.4	8.8
15,188.0	87.14	1.77	12,377.6	2,777.8	470.0	6.03	-5.93	-1.12	-3.1	4.4
15,284.0	88.55	1.77	12,381.2	2,873.7	472.9	1.47	1.47	0.00	-0.3	0.8
15,379.0	89.78	0.89	12,382.6	2,968.6	475.1	1.59	1.29	-0.93	0.2	-2.1
15,474.0	90.31	359.40	12,382.5	3,063.6	475.4	1.66	0.56	-1.57	-0.7	-2.9
15,570.0	87.23	359.05	12,384.6	3,159.6	474.1	3.23	-3.21	-0.36	0.6	-2.3
15,665.0	87.14	358.26	12,389.2	3,254.4	471.8	0.84	-0.09	-0.83	4.4	-0.7
15,760.0	89.43	359.05	12,392.1	3,349.4	469.6	2.55	2.41	0.83	6.5	0.9
15,855.0	89.08	0.37	12,393.3	3,444.3	469.1	1.44	-0.37	1.39	6.9	0.8
15,951.0	85.03	358.79	12,398.2	3,540.2	468.4	4.53	-4.22	-1.65	11.0	0.9
16,046.0	85.47	359.22	12,406.1	3,634.8	466.8	0.65	0.46	0.45	18.1	1.9
16,141.0	88.11	358.43	12,411.4	3,729.7	464.8	2.90	2.78	-0.83	22.6	3.2
16,236.0	91.71	357.82	12,411.6	3,824.6	461.7	3.84	3.79	-0.64	21.9	5.7
16,331.0	93.39	358.17	12,407.3	3,919.4	458.4	1.81	1.77	0.37	16.9	8.4
16,426.0	90.40	359.40	12,404.2	4,014.4	456.4	3.40	-3.15	1.29	12.9	9.8
16,522.0	91.19	0.54	12,402.9	4,110.3	456.3	1.44	0.82	1.19	10.8	9.2
16,617.0	89.43	0.54	12,402.4	4,205.3	457.2	1.85	-1.85	0.00	9.4	7.7
16,712.0	83.71	1.60	12,408.0	4,300.1	459.0	6.12	-6.02	1.12	14.3	5.3
16,807.0	86.09	0.02	12,416.5	4,394.7	460.3	3.00	2.51	-1.66	21.9	3.3
16,903.0	89.60	3.97	12,420.1	4,490.6	463.7	5.50	3.66	4.11	24.7	-0.6
16,998.0	86.79	3.44	12,423.1	4,585.3	469.8	3.01	-2.96	-0.56	26.9	-7.4



EOG Resources  
Midland PVA

Company:	EOG Resources - Midland	Local Co-ordinate Reference:	Well #708H
Project:	Lea County, NM (NAD 83 NME)	TVD Reference:	KB = 22' @ 3390.0usft
Site:	Green Drake 21 Fed Com	MD Reference:	KB = 22' @ 3390.0usft
Well:	#708H	North Reference:	Grid
Wellbore:	OH	Survey Calculation Method:	Minimum Curvature
Design:	OH	Database:	EDM

MD (usft)	Inc (°)	Azi (azimuth) (°)	TVD (usft)	N/S (usft)	E/W (usft)	DLeg (°/100usft)	Build (°/100usft)	Turn (°/100usft)	High to Plan (usft)	Right to Plan (usft)
17,093.0	86.88	3.44	12,428.3	4,680.0	475.5	0.09	0.09	0.00	31.3	-13.7
17,188.0	87.76	5.20	12,432.8	4,774.6	482.7	2.07	0.93	1.85	35.0	-21.5
17,284.0	87.14	0.63	12,437.0	4,870.4	487.5	4.80	-0.65	-4.76	38.4	-27.0
17,379.0	89.34	359.75	12,440.0	4,955.3	487.9	2.49	2.32	-0.93	40.5	-27.9
17,474.0	86.44	359.49	12,443.5	5,050.2	487.2	3.06	-3.05	-0.27	43.2	-27.9
17,569.0	83.98	358.70	12,451.4	5,154.9	485.7	2.72	-2.59	-0.83	50.3	-27.1
17,664.0	87.85	358.35	12,458.2	5,249.6	483.3	4.09	4.07	-0.37	56.3	-25.2
17,760.0	87.23	357.82	12,462.3	5,345.4	480.1	0.85	-0.65	-0.55	59.6	-22.6
17,855.0	90.92	357.20	12,463.8	5,440.3	476.0	3.94	3.88	-0.65	60.3	-19.1
17,950.0	91.89	358.52	12,461.5	5,535.2	472.4	1.72	1.02	1.39	57.2	-16.2
18,045.0	89.25	358.35	12,460.5	5,630.2	469.8	2.78	-2.78	-0.18	55.4	-14.2
18,141.0	88.20	357.38	12,462.7	5,726.1	466.2	1.49	-1.09	-1.01	56.7	-11.3
18,236.0	88.02	356.76	12,465.8	5,820.9	461.4	0.68	-0.19	-0.65	59.1	-7.0
18,331.0	90.22	358.17	12,467.3	5,915.8	457.2	2.75	2.32	1.48	59.7	-3.5
18,383.1	91.19	358.89	12,466.6	5,967.9	455.9	2.31	1.85	1.38	58.6	-2.5
TGT#2(GD 21 FC #708H)										
18,426.0	91.98	359.48	12,465.4	6,010.8	455.2	2.31	1.85	1.38	57.4	-2.2
18,522.0	88.64	356.67	12,464.9	6,106.7	452.0	4.55	-3.48	-2.93	57.2	0.4
18,617.0	90.66	357.54	12,465.5	6,201.5	447.2	2.32	2.13	0.92	58.1	4.6
18,712.0	92.51	358.34	12,462.9	6,296.4	443.8	2.12	1.95	0.84	55.8	7.4
18,807.0	91.63	356.93	12,459.4	6,391.3	439.9	1.75	-0.93	-1.48	52.6	10.7
18,903.0	93.91	357.98	12,454.8	6,487.1	435.6	2.61	2.37	1.09	48.3	14.3
19,006.0	93.56	0.62	12,448.1	6,589.8	434.4	2.58	-0.34	2.56	41.9	14.9
19,102.0	90.48	1.50	12,444.7	6,685.8	436.2	3.34	-3.21	0.92	38.9	12.5
19,197.0	88.72	2.11	12,445.4	6,780.7	439.1	1.96	-1.85	0.64	39.9	8.9
19,292.0	89.87	2.47	12,446.5	6,875.6	442.9	1.27	1.21	0.38	41.3	4.4
19,387.0	89.78	0.53	12,446.8	6,970.6	445.4	2.04	-0.09	-2.04	41.9	1.3



**EOG Resources**  
Midland PVA

Company:	EOG Resources - Midland	Local Co-ordinate Reference:	Well #708H
Project:	Lea County, NM (NAD 83 NME)	TVD Reference:	KB = 22' @ 3390.0usft
Site:	Green Drake 21 Fed Com	MD Reference:	KB = 22' @ 3390.0usft
Well:	#708H	North Reference:	Grid
Wellbore:	OH	Survey Calculation Method:	Minimum Curvature
Design:	OH	Database:	EDM

MD (usft)	Inc (°)	Azi (azimuth) (°)	TVD (usft)	N/S (usft)	E/W (usft)	DLeg (°/100usft)	Build (°/100usft)	Turn (°/100usft)	High to Plan (usft)	Right to Plan (usft)
19,482.0	88.99	0.45	12,447.9	7,065.6	446.2	0.84	-0.83	-0.08	43.3	-0.1
19,577.0	88.20	0.36	12,450.2	7,160.5	446.9	0.84	-0.83	-0.09	45.9	-1.4
19,672.0	89.52	359.92	12,452.1	7,255.5	447.1	1.46	1.39	-0.46	48.1	-2.3
19,767.0	89.52	359.57	12,452.9	7,350.5	446.7	0.37	0.00	-0.37	49.2	-2.5
19,862.0	90.75	359.30	12,452.6	7,445.5	445.8	1.33	1.29	-0.28	49.3	-2.1
Last MWD Survey (MD=19862.0)										
19,958.0	90.75	359.30	12,451.4	7,541.5	444.6	0.00	0.00	0.00	48.4	-1.6
Projection to Bit (MD=19958.0) - PBHL(GD 21 FC #708H)										

Design Annotations				
Measured Depth (usft)	Vertical Depth (usft)	Local Coordinates		Comment
		+N/-S (usft)	+E/-W (usft)	
11,870.0	11,830.3	-259.1	522.0	KOP, MD:11870.0', TVD:11830.3', N/S:-259.1', E/W:522.0', INC:6.99
12,135.9	12,077.8	-169.0	515.6	FTP Crossing, MD:12135.9', TVD:12077.8', N/S:-169.0', E/W:515.6', INC:33.04
19,862.0	12,452.6	7,445.5	445.8	Last MWD Survey (MD=19862.0')
19,958.0	12,451.4	7,541.5	444.6	Projection to Bit (MD=19958.0')

Checked By: _____	Approved By: _____	Date: _____
-------------------	--------------------	-------------

I certify this survey to be true and correct to the best of my belief and knowledge.

*Kay Maddox* 11/12/2020

Signed

Date



Lea County, NM (NAD 83 NME)  
Green Drake 21 Fed Com #708H  
Plan #1



Azimuths to Grid North  
True North: -0.40°  
Magnetic North: 6.24°

Magnetic Field  
Strength: 47521.6nT  
Dip Angle: 59.83°  
Date: 7/15/2020  
Model: IGRF2020

To convert a Magnetic Direction to a Grid Direction, Add 6.24°  
To convert a Magnetic Direction to a True Direction, Add 6.65° East  
To convert a True Direction to a Grid Direction, Subtract 6.40°

PROJECT DETAILS: Lea County, NM (NAD 83 NME)

Geodetic System: US State Plane 1983  
Datum: North American Datum 1983  
Ellipsoid: GRS 1960  
Zone: New Mexico Eastern Zone  
System Datum: Mean Sea Level

WELL DETAILS: #708H

KB = 22' @ 3390.0usft 3368.0  
Northing 404413.00 Easting 775914.00 Latitude 32.1095443°N Longitude 103.5757133°W

SECTION DETAILS

Sec	MD	Inc	Azi	TVD	+N/-S	+E/-W	Dleg	TFace	Vsect	Target
1	1128.0	3.78	49.19	1126.7	-3.5	-3.4	0.00	0.00	-3.7	
2	1201.5	3.78	49.19	1200.0	-0.3	0.3	0.00	0.00	-0.3	
3	1479.8	5.94	114.78	1477.4	-0.3	20.3	2.00	103.65	0.9	
4	6372.1	5.94	114.78	6343.5	-212.6	480.0	0.00	0.00	-184.0	
5	6669.1	0.00	0.00	6640.0	-219.0	494.0	2.00	180.00	-189.7	
6	11893.1	0.00	0.00	11874.0	-219.0	494.0	0.00	0.00	-189.7	
7	12645.6	89.10	359.62	12351.4	250.9	490.9	12.00	359.62	278.3	
8	13697.7	89.10	359.62	13268.0	1302.9	484.0	0.00	0.00	1328.0	TGT#1(GD 21 FC #708H)
9	13718.4	89.51	359.62	13268.3	1323.6	483.9	2.00	0.00	1349.7	
10	18361.8	89.51	359.62	12408.0	5966.7	453.4	0.00	0.00	5983.0	TGT#2(GD 21 FC #708H)
11	18395.8	90.19	359.62	12408.1	6000.7	453.1	2.00	0.00	6016.9	
12	19938.1	90.19	359.62	12403.0	7543.0	443.0	0.00	0.00	7556.0	PBHL(GD 21 FC #708H)

CASING DETAILS

No casing data is available

WELLBORE TARGET DETAILS (MAP CO-ORDINATES)

Name	TVD	+N/-S	+E/-W	Northing	Easting
Brushy Top(GD 21 FC #708H)	7502.0	-219.0	494.0	404194.00	776408.00
FTP(GD 21 FC #708H)	12348.0	-169.0	494.0	404244.00	776408.00
TGT#1(GD 21 FC #708H)	12368.0	1322.9	484.0	403715.00	776398.00
PBHL(GD 21 FC #708H)	12403.0	7543.0	443.0	411956.00	776357.00
TGT#2(GD 21 FC #708H)	12408.0	5966.7	453.4	410379.70	776367.36

