

State of New Mexico
Energy, Minerals & Natural Resources
Department
OIL CONSERVATION DIVISION
1220 South St. Francis Dr.
Sante Fe, NM 87505

FORM C-102

Revised August 1, 2011

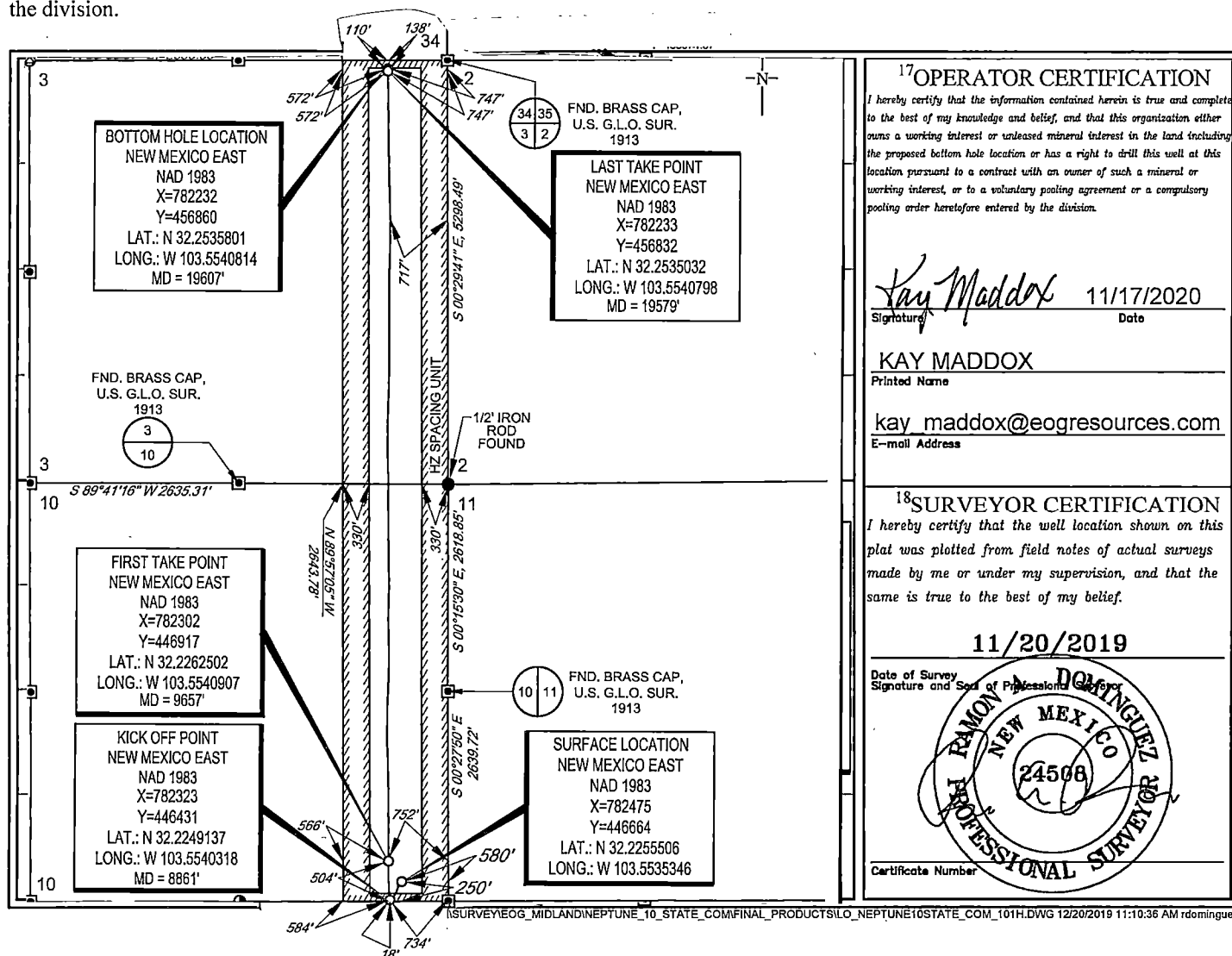
Submit one copy to appropriate

District Office☐ **AMENDED REPORT**

WELL LOCATION AND ACREAGE DEDICATION PLAT

¹ API Number 30-025-44468		² Pool Code 59900		³ Pool Name TRIPLE X; BONE SPRING		⁴ Well Name KZ			
⁴ Property Code 313956		⁵ Property Name NEPTUNE 10 STATE COM				⁶ Well Number 101H			
⁷ GRID No. 7377		⁸ Operator Name EOG RESOURCES, INC.				⁹ Elevation 3607'			
¹⁰ Surface Location									
UL or lot no. P	Section 10	Township 24-S	Range 33-E	Lot Idn -	Feet from the 250'	North/South line SOUTH	Feet from the 580'	East/West line EAST	County LEA
¹¹ Bottom Hole Location If Different From Surface								SL	
UL or lot no. A	Section 3	Township 24-S	Range 33-E	Lot Idn -	Feet from the 110'	North/South line NORTH	Feet from the 747'	East/West line EAST	County LEA
¹² Dedicated Acres 320.05		¹³ Joint or Infill		¹⁴ Consolidation Code		¹⁵ Order No.			

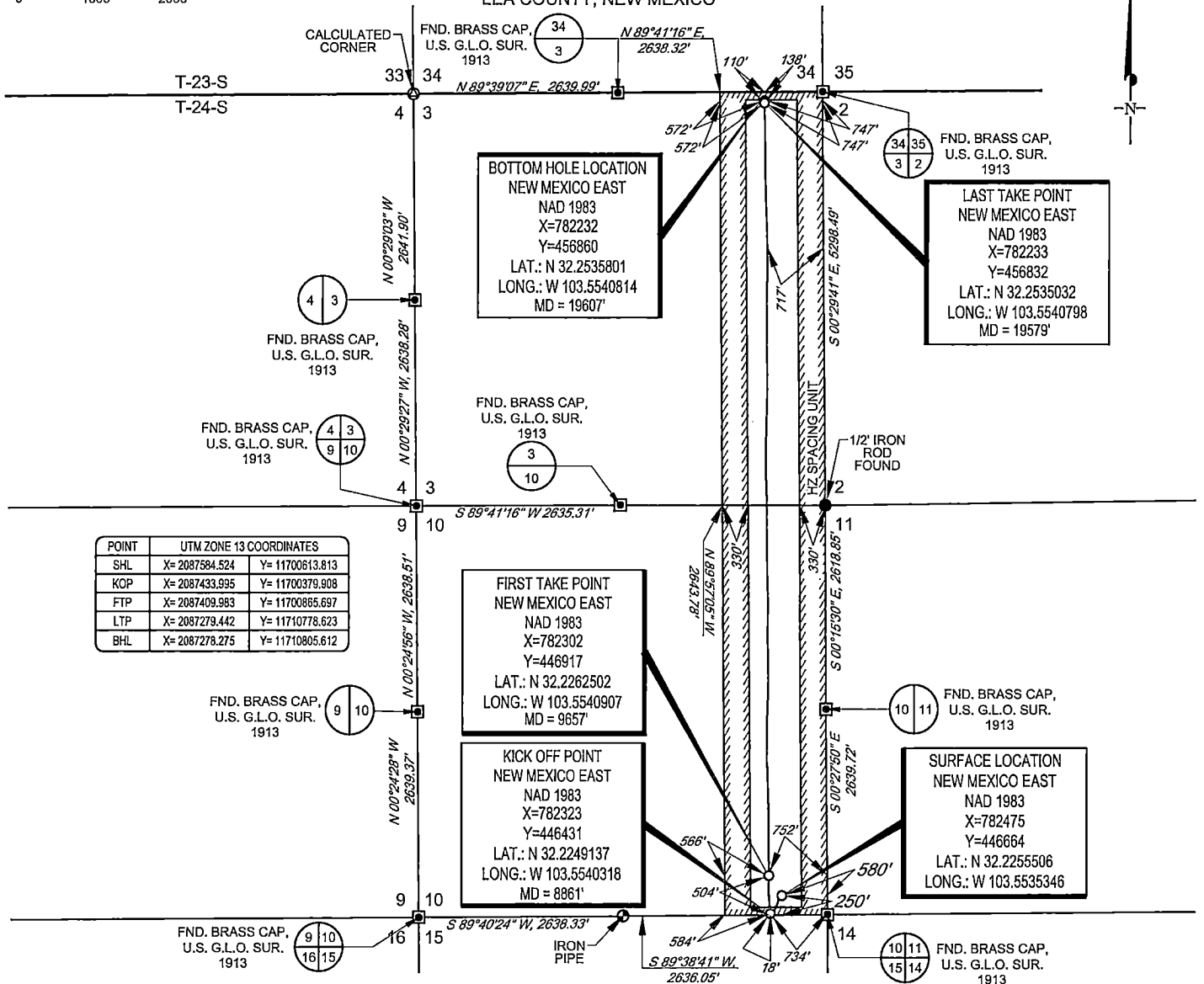
No allowable will be assigned to this completion until all interests have been consolidated or a non-standard unit has been approved by the division.



SCALE: 1" = 2000'

0' 1000' 2000'

SECTION 10 TOWNSHIP 24-S, RANGE 33-E, N.M.P.M.
LEA COUNTY, NEW MEXICO

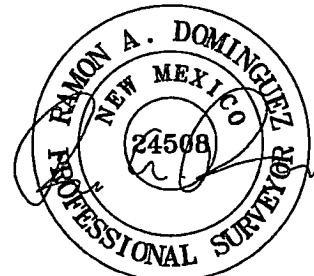


LEASE NAME & WELL NO.: NEPTUNE 10 STATE COM #101H
SECTION 10 TWP 24-S RGE 33-E SURVEY N.M.P.M.
COUNTY LEA STATE NM ELEVATION 3607'
DESCRIPTION 250' FSL & 580' FEL



TOPOGRAPHIC
LOYALTY INNOVATION LEGACY

1400 EVERMAN PARKWAY, Ste. 146 • FT. WORTH, TEXAS 76140
TELEPHONE: (817) 744-7512 • FAX (817) 744-7554
TEXAS FIRM REGISTRATION NO. 10042504
WWW.TOPOGRAPHIC.COM



Ramon A. Dominguez, P.S. No. 24508
AUGUST 6, 2020

eoog resources, Inc.

NEPTUNE 10 STATE COM
#101H
AS-COMPLETE

DATE: 08/04/2020
FILE: AD_NEPTUNE_10_STATE_COM_101H
DRAWN BY: A.V.F.
SHEET: 1 OF 1

REVISION:

INT DATE

NOTES:

1. ORIGINAL DOCUMENT SIZE: 8.5" X 11"
2. ALL BEARINGS, DISTANCES, AND COORDINATE VALUES CONTAINED HEREIN ARE GRID BASED UPON THE NEW MEXICO COORDINATE SYSTEM, EAST ZONE, U.S. SURVEY FEET, NORTH AMERICAN DATUM 1983.
3. THIS WELL LOCATION SHOWN HEREON HAS BEEN SURVEYED ON THE GROUND UNDER MY SUPERVISION AND PREPARED ACCORDING TO THE EVIDENCE FOUND AT THE TIME OF SURVEY, AND DATA PROVIDED BY EOG RESOURCES, INC. THIS CERTIFICATION IS MADE AND LIMITED TO THOSE PERSONS OR ENTITIES SHOWN ON THE FACE OF THIS PLAT AND IS NON-TRANSFERABLE. THIS SURVEY IS CERTIFIED FOR THIS TRANSACTION ONLY.

Intent ☐ As Drilled ☐ XXX

API # 30-025-44468		
Operator Name: EOG RESOURCES, INC	Property Name: NEPTUNE 10 STATE COM	Well Number 101H

Kick Off Point (KOP)

UL P	Section 10	Township 24S	Range 33E	Lot	Feet 18	From N/S SOUTH	Feet 734	From E/W EAST	County LEA
Latitude 32.2249137					Longitude 103.5540318				NAD 1983

First Take Point (FTP)

UL P	Section 10	Township 24S	Range 33E	Lot	Feet 504	From N/S SOUTH	Feet 752	From E/W EAST	County LEA
Latitude 32.2262502					Longitude 103.5540907				NAD 1983

Last Take Point (LTP)

UL A	Section 3	Township 24S	Range 33E	Lot	Feet 138	From N/S NORTH	Feet 747	From E/W EAST	County LEA
Latitude 32.2535163					Longitude 103.5594342				NAD 1983

Is this well the defining well for the Horizontal Spacing Unit? ☐ NO

Is this well an infill well? ☐ YES

If infill is yes please provide API if available, Operator Name and well number for Defining well for Horizontal Spacing Unit.

API # 30-025-46735		
Operator Name: EOG RESOURCES, INC	Property Name: NEPTUNE 10 STATE COM	Well Number 205H

KZ 06/29/2018



EOG Resources - Midland

Lea County, NM (NAD 83 NME)

Neptune 10 State Com

#101H

OH

Design: OH

Midland PVA

24 March, 2020



EOG Resources
Midland PVA

Company:	EOG Resources - Midland	Local Co-ordinate Reference:	Well #101H
Project:	Lea County, NM (NAD 83 NME)	TVD Reference:	KB = 25 @ 3632.0usft
Site:	Neptune 10 State Com	MD Reference:	KB = 25 @ 3632.0usft
Well:	#101H	North Reference:	Grid
Wellbore:	OH	Survey Calculation Method:	Minimum Curvature
Design:	OH	Database:	EDM

Project	Lea County, NM (NAD 83 NME)		
Map System:	US State Plane 1983	System Datum:	Mean Sea Level
Geo Datum:	North American Datum 1983		
Map Zone:	New Mexico Eastern Zone		

Site	Neptune 10 State Com		
Site Position:		Northing:	446,557.00 usft
From:	Map	Easting:	778,964.00 usft
Position Uncertainty:	0.0 usft	Slot Radius:	13-3/16 "
		Latitude:	32° 13' 31.172 N
		Longitude:	103° 33' 53.609 W
		Grid Convergence:	0.41 °

Well	#101H		
Well Position	+N-S	0.0 usft	Northing:
	+E-W	0.0 usft	Easting:
Position Uncertainty	0.0 usft	Wellhead Elevation:	usft
		Latitude:	32° 13' 31.980 N
		Longitude:	103° 33' 12.729 W
		Ground Level:	3,607.0 usft

Wellbore:	OH		
Magnetics	Model Name	Sample Date	Declination
	IGRF2015	3/7/2020	6.65
			Dip Angle
			60.03
			Field Strength
			47,659.60446204

Design	OH		
Audit Notes:			
Version:	1.0	Phase:	ACTUAL
		Tie On Depth:	0.0
Vertical Section:	Depth From (TVD)	+N-S	+E-W
	(usft)	(usft)	(usft)
	0.0	0.0	0.0
			Direction
			(°)
			358.68

Survey Program	Date	3/24/2020		
From	To	Survey (Wellbore)	Tool Name	Description
(usft)	(usft)			
111.0	19,607.0	Drilltech MWD (OH)	EOG MWD+IFR1	MWD + IFR1



EOG Resources
Midland PVA

Company:	EOG Resources - Midland	Local Co-ordinate Reference:	Well #101H
Project:	Lea County, NM (NAD 83 NME)	TVD Reference:	KB = 25 @ 3632.0usft
Site:	Neptune 10 State Com	MD Reference:	KB = 25 @ 3632.0usft
Well:	#101H	North Reference:	Grid
Wellbore:	OH	Survey Calculation Method:	Minimum Curvature
Design:	OH	Database:	EDM

Survey											
MD (usft)	Inc (°)	Azi (azimuth) (°)	TVD (usft)	N/S (usft)	E/W (usft)	DLeg (°/100usft)	Build (°/100usft)	Turn (°/100usft)	High to Plan (usft)	Right to Plan (usft)	
0.0	0.00	0.00	0.0	0.0	0.0	0.00	0.00	0.00	0.0	0.0	0.0
111.0	0.62	94.53	111.0	0.0	0.6	0.56	0.56	0.00	-0.6	0.0	
170.0	0.53	31.69	170.0	0.2	1.1	1.02	-0.15	-106.51	-0.7	-0.8	
344.0	0.62	22.19	344.0	1.7	1.8	0.08	0.05	-5.46	-2.3	-1.1	
401.0	0.79	19.38	401.0	2.4	2.1	0.30	0.30	-4.93	-2.9	-1.2	
487.0	0.79	290.08	487.0	3.1	1.7	1.29	0.00	-103.84	0.5	-3.5	
672.0	0.53	26.50	672.0	4.3	0.9	0.54	-0.14	52.12	-4.3	1.1	
766.0	0.53	51.90	766.0	5.0	1.4	0.25	0.00	27.02	-4.2	3.0	
860.0	0.62	64.29	860.0	5.5	2.2	0.16	0.10	13.18	-4.4	4.0	
955.0	0.70	73.61	955.0	5.9	3.3	0.14	0.08	9.81	-4.8	4.7	
1,049.0	0.79	74.49	1,048.9	6.2	4.4	0.10	0.10	0.94	-5.9	4.8	
1,143.0	0.79	59.28	1,142.9	6.7	5.6	0.22	0.00	-16.18	-8.3	2.9	
1,237.0	0.70	50.49	1,236.9	7.4	6.6	0.15	-0.10	-9.35	-9.8	1.5	
1,331.0	0.70	33.36	1,330.9	8.3	7.4	0.22	0.00	-18.22	-11.0	-1.6	
1,414.0	0.79	17.27	1,413.9	9.2	7.8	0.27	0.11	-19.39	-11.1	-4.7	
1,507.0	1.41	14.99	1,506.9	10.9	8.3	0.67	0.67	-2.45	-12.7	-5.2	
1,601.0	1.58	7.69	1,600.9	13.3	8.8	0.27	0.18	-7.77	-14.4	-6.9	
1,695.0	1.41	7.67	1,694.8	15.8	9.1	0.18	-0.18	0.19	-16.9	-6.9	
1,789.0	1.23	6.11	1,788.8	17.9	9.4	0.20	-0.19	-1.87	-18.8	-7.4	
1,883.0	1.14	356.09	1,882.8	19.9	9.4	0.24	-0.10	-10.66	-19.2	-10.8	
1,977.0	0.79	8.13	1,976.8	21.4	9.5	0.43	-0.37	12.81	-22.6	-6.3	
2,071.0	0.79	357.50	2,070.8	22.7	9.5	0.16	0.00	-11.31	-22.3	-10.5	
2,166.0	0.44	13.23	2,165.8	23.7	9.6	0.41	-0.37	16.56	-25.3	-3.9	
2,260.0	0.70	358.29	2,259.8	24.7	9.6	0.32	0.28	-15.89	-24.4	-10.4	
2,355.0	0.70	352.66	2,354.7	25.8	9.6	0.07	0.00	-5.93	-24.4	-12.8	
2,449.0	0.62	6.11	2,448.7	26.9	9.5	0.18	-0.09	14.31	-27.7	-6.6	
2,543.0	0.62	338.60	2,542.7	27.9	9.4	0.31	0.00	-29.27	-22.5	-18.9	



EOG Resources
Midland PVA

Company:	EOG Resources - Midland	Local Co-ordinate Reference:	Well #101H
Project:	Lea County, NM (NAD 83 NME)	TVD Reference:	KB = 25 @ 3632.0usft
Site:	Neptune 10 State Com	MD Reference:	KB = 25 @ 3632.0usft
Well:	#101H	North Reference:	Grid
Wellbore:	OH	Survey Calculation Method:	Minimum Curvature
Design:	OH	Database:	EDM

MD (usft)	Inc (°)	Azi (azimuth) (°)	TVD (usft)	N/S (usft)	E/W (usft)	DLeg (°/100usft)	Build (°/100usft)	Turn (°/100usft)	High to Plan (usft)	Right to Plan (usft)
2,638.0	0.62	334.03	2,637.7	28.8	9.0	0.05	0.00	-4.81	-22.0	-20.7
2,732.0	0.44	334.03	2,731.7	29.6	8.6	0.19	-0.19	0.00	-22.8	-20.7
2,826.0	1.23	233.92	2,825.7	29.3	7.6	1.47	0.84	-106.50	23.4	-19.2
2,920.0	2.73	225.13	2,919.7	27.1	5.2	1.62	1.60	-9.35	22.8	-15.6
3,014.0	2.81	221.35	3,013.6	23.8	2.1	0.21	0.09	-4.02	19.3	-14.2
3,108.0	2.55	218.10	3,107.4	20.5	-0.7	0.32	-0.28	-3.46	15.7	-13.2
3,203.0	2.11	217.66	3,202.4	17.4	-3.1	0.46	-0.46	-0.46	11.9	-13.1
3,297.0	1.67	216.08	3,296.3	14.9	-4.9	0.47	-0.47	-1.68	9.2	-12.8
3,391.0	2.73	216.96	3,390.2	12.0	-7.1	1.13	1.13	0.94	5.4	-12.9
3,486.0	4.66	219.42	3,485.0	7.2	-10.9	2.04	2.03	2.59	-1.3	-13.0
3,580.0	4.22	218.01	3,578.8	1.6	-15.4	0.48	-0.47	-1.50	-8.3	-13.1
3,674.0	3.69	220.04	3,672.5	-3.5	-19.5	0.58	-0.56	2.16	-15.2	-12.7
3,769.0	2.99	224.52	3,767.4	-7.6	-23.2	0.79	-0.74	4.72	-20.6	-11.4
3,863.0	4.04	213.27	3,861.2	-12.1	-26.8	1.33	1.12	-11.97	-19.7	-15.3
3,957.0	4.84	211.69	3,954.9	-18.2	-30.7	0.86	0.85	-1.68	-20.1	-15.2
4,052.0	4.57	211.60	4,049.6	-24.9	-34.7	0.28	-0.28	-0.09	-21.3	-14.5
4,146.0	4.22	213.71	4,143.3	-30.9	-38.6	0.41	-0.37	2.24	-22.5	-13.0
4,241.0	3.78	211.51	4,238.1	-36.5	-42.2	0.49	-0.46	-2.32	-22.0	-13.3
4,335.0	3.08	214.50	4,331.9	-41.2	-45.3	0.77	-0.74	3.18	-21.7	-11.5
4,429.0	2.37	201.84	4,425.8	-45.1	-47.4	0.99	-0.76	-13.47	-16.8	-14.7
4,523.0	2.20	178.46	4,519.7	-48.7	-48.1	1.00	-0.18	-24.87	-8.1	-16.7
4,618.0	2.99	184.26	4,614.6	-53.0	-48.2	0.88	0.83	6.11	-8.6	-11.9
4,712.0	3.78	190.77	4,708.5	-58.5	-49.0	0.93	0.84	6.93	-9.6	-7.6
4,806.0	3.87	181.36	4,802.3	-64.7	-49.6	0.67	0.10	-10.01	-9.2	-5.6
4,901.0	3.87	183.82	4,897.1	-71.1	-49.9	0.17	0.00	2.59	-10.4	-1.4
4,995.0	4.57	197.45	4,990.8	-77.9	-51.3	1.30	0.74	14.50	-11.1	4.2
5,084.0	4.40	198.41	5,079.5	-84.5	-53.4	0.21	-0.19	1.08	-12.1	6.5



EOG Resources
Midland PVA

Company:	EOG Resources - Midland	Local Co-ordinate Reference:	Well #101H
Project:	Lea County; NM (NAD 83 NME)	TVD Reference:	KB = 25 @ 3632.0usft
Site:	Neptune 10 State Com	MD Reference:	KB = 25 @ 3632.0usft
Well:	#101H	North Reference:	Grid
Wellbore:	OH	Survey Calculation Method:	Minimum Curvature
Design:	OH	Database:	EDM

Survey											
MD (usft)	Inc (°)	Azi (azimuth) (°)	TVD (usft)	N/S (usft)	E/W (usft)	DLeg (°/100usft)	Build (°/100usft)	Turn (°/100usft)	High to Plan (usft)	Right to Plan (usft)	
5,185.0	3.43	199.73	5,180.3	-91.0	-55.6	0.96	-0.96	1.31	-12.2	9.1	
5,279.0	3.08	198.68	5,274.1	-96.0	-57.4	0.38	-0.37	-1.12	-11.5	11.0	
5,373.0	2.99	202.63	5,368.0	-100.7	-59.2	0.24	-0.10	4.20	-9.4	13.7	
5,468.0	3.96	206.15	5,462.8	-105.9	-61.6	1.04	1.02	3.71	-7.8	15.8	
5,562.0	4.57	207.82	5,556.6	-112.2	-64.7	0.66	0.65	1.78	-7.9	17.3	
5,656.0	4.13	205.18	5,650.3	-118.5	-67.9	0.51	-0.47	-2.81	-9.4	18.2	
5,750.0	3.87	205.71	5,744.1	-124.5	-70.7	0.28	-0.28	0.56	-9.4	19.7	
5,845.0	3.89	205.80	5,838.9	-130.1	-73.5	0.19	-0.19	0.09	-9.1	21.2	
5,939.0	3.61	195.07	5,932.7	-135.7	-75.5	0.73	-0.09	-11.41	-12.8	21.1	
6,033.0	3.34	200.61	6,026.5	-141.1	-77.3	0.46	-0.29	5.89	-10.1	24.5	
6,128.0	3.08	203.16	6,121.4	-146.0	-79.3	0.31	-0.27	2.68	-8.0	26.8	
6,222.0	2.73	202.28	6,215.2	-150.4	-81.1	0.38	-0.37	-0.94	-6.8	28.4	
6,317.0	3.69	209.84	6,310.1	-155.2	-83.5	1.10	1.01	7.96	-1.8	30.3	
6,411.0	4.31	221.09	6,403.9	-160.5	-87.3	1.06	0.66	11.97	4.2	30.4	
6,505.0	4.04	218.72	6,497.6	-165.7	-91.7	0.34	-0.29	-2.52	2.7	30.3	
6,599.0	4.04	217.75	6,591.4	-170.9	-95.8	0.07	0.00	-1.03	2.1	30.3	
6,694.0	4.13	216.17	6,686.1	-176.3	-99.9	0.15	0.09	-1.66	1.1	30.5	
6,788.0	3.96	217.31	6,779.9	-181.6	-103.8	0.20	-0.18	1.21	1.7	30.6	
6,882.0	3.78	216.08	6,873.7	-186.7	-107.6	0.21	-0.19	-1.31	1.2	30.8	
6,977.0	3.87	216.17	6,968.5	-191.8	-111.4	0.09	0.09	0.09	1.6	31.1	
7,071.0	3.61	217.14	7,062.3	-196.8	-115.0	0.28	-0.28	1.03	2.5	31.2	
7,165.0	2.64	240.25	7,156.1	-200.2	-118.7	1.67	-1.03	24.59	15.7	26.4	
7,259.0	2.64	241.13	7,250.0	-202.3	-122.5	0.04	0.00	0.94	17.9	23.7	
7,354.0	2.20	241.57	7,344.9	-204.2	-126.0	0.46	-0.46	0.46	20.1	20.9	
7,448.0	2.11	245.79	7,438.9	-205.8	-129.1	0.19	-0.10	4.49	22.6	17.2	
7,542.0	2.29	236.12	7,532.8	-207.6	-132.3	0.44	0.19	-10.29	17.7	19.8	



EOG Resources
Midland PVA

Company:	EOG Resources - Midland	Local Co-ordinate Reference:	Well #101H
Project:	Lea County, NM (NAD 83 NME)	TVD Reference:	KB = 25 @ 3632.0usft
Site:	Neptune 10 State Com	MD Reference:	KB = 25 @ 3632.0usft
Well:	#101H	North Reference:	Grid
Wellbore:	OH	Survey Calculation Method:	Minimum Curvature
Design:	OH	Database:	EDM

MD (usft)	Inc (°)	Azi (azimuth) (°)	TVD (usft)	N/S (usft)	E/W (usft)	DLeg (°/100usft)	Build (°/100usft)	Turn (°/100usft)	High to Plan (usft)	Right to Plan (usft)
7,555.8	2.25	236.21	7,546.6	-207.9	-132.7	0.29	-0.29	0.67	17.2	19.8
Brushy Top (Neptune 10 St Com #101H)										
7,636.0	2.02	236.82	7,626.7	-209.5	-135.2	0.29	-0.29	0.76	14.4	19.6
7,730.0	1.85	229.00	7,720.7	-211.4	-137.8	0.33	-0.18	-8.32	8.4	21.1
7,825.0	1.58	228.12	7,815.7	-213.3	-139.9	0.29	-0.28	-0.93	5.3	21.2
7,919.0	1.58	218.10	7,909.6	-215.2	-141.7	0.29	0.00	-10.66	-1.1	21.6
8,013.0	1.41	222.76	8,003.6	-217.0	-143.2	0.22	-0.18	4.96	-1.8	21.7
8,107.0	1.41	225.84	8,097.6	-218.7	-144.9	0.08	0.00	3.28	-2.9	21.9
8,201.0	1.41	221.79	8,191.5	-220.4	-146.5	0.11	0.00	-4.31	-6.7	21.5
8,295.0	1.32	204.74	8,285.5	-222.2	-147.7	0.44	-0.10	-18.14	-14.9	18.3
8,390.0	1.49	201.49	8,380.5	-224.4	-148.6	0.20	0.18	-3.42	-18.3	17.3
8,484.0	1.14	195.43	8,474.4	-226.4	-149.3	0.40	-0.37	-6.45	-22.2	15.2
8,578.0	1.32	202.90	8,568.4	-228.3	-150.0	0.26	0.19	7.95	-22.0	18.0
8,672.0	1.23	198.77	8,662.4	-230.2	-150.7	0.14	-0.10	-4.39	-25.3	16.3
8,766.0	1.41	194.20	8,756.4	-232.3	-151.3	0.22	0.19	-4.86	-28.7	14.2
8,809.0	1.41	194.37	8,799.4	-233.3	-151.6	0.01	0.00	0.40	-29.7	14.3
8,861.0	2.65	343.11	8,851.3	-232.8	-152.1	7.55	2.39	286.04	32.2	3.6
KOP, MD:8861.0', TVD:8851.3', N/S:-232.8', E/W:-152.1', INC:2.65										
8,903.0	5.80	348.97	8,893.2	-229.8	-152.8	7.55	7.49	13.95	29.7	0.4
8,997.0	16.27	354.33	8,985.4	-212.0	-155.0	11.18	11.14	5.70	22.3	-0.9
9,092.0	26.20	353.10	9,073.8	-177.8	-158.8	10.46	10.45	-1.29	12.9	2.0
9,147.3	32.19	355.76	9,122.1	-151.0	-161.4	11.07	10.82	4.81	6.9	3.4
FTP Crossing, MD:9147.3', TVD:9122.1', N/S:-151.0', E/W:-161.4', INC:32.19										
9,186.0	36.40	357.15	9,154.0	-129.3	-162.7	11.07	10.89	3.58	2.5	4.3
9,280.0	48.10	355.74	9,223.5	-66.3	-166.7	12.49	12.45	-1.50	-10.9	7.2
9,352.7	51.29	355.58	9,270.5	-11.0	-170.9	4.40	4.39	-0.22	-20.1	10.6
FTP (Neptune 10 St Com #101H)										
9,374.0	52.23	355.54	9,283.7	5.7	-172.2	4.40	4.39	-0.20	-21.8	11.7



EOG Resources
Midland PVA

Company:	EOG Resources - Midland	Local Co-ordinate Reference:	Well #101H
Project:	Lea County, NM (NAD 83 NME)	TVD Reference:	KB = 25 @ 3632.0usft
Site:	Neptune 10 State Com	MD Reference:	KB = 25 @ 3632.0usft
Well:	#101H	North Reference:	Grid
Wellbore:	OH	Survey Calculation Method:	Minimum Curvature
Design:	OH	Database:	EDM

MD (usft)	Inc (°)	Azi (azimuth) (°)	TVD (usft)	N/S (usft)	E/W (usft)	DLeg (°/100usft)	Build (°/100usft)	Turn (°/100usft)	High to Plan (usft)	Right to Plan (usft)
9,469.0	57.24	358.71	9,338.5	83.1	-176.0	5.93	5.27	3.34	-23.6	15.7
9,563.0	64.37	1.70	9,384.4	165.1	-175.7	8.08	7.59	3.18	-19.3	15.2
9,657.0	72.98	0.73	9,418.5	252.6	-173.8	9.21	9.16	-1.03	-12.5	12.6
9,751.0	79.84	359.76	9,440.6	343.9	-173.4	7.37	7.30	-1.03	-2.7	11.4
9,845.0	92.77	358.88	9,446.6	437.5	-174.6	13.79	13.76	-0.94	4.5	11.8
9,940.0	91.71	0.38	9,442.9	532.4	-175.2	1.93	-1.12	1.58	3.9	11.7
10,034.0	87.76	359.67	9,443.4	626.4	-175.1	4.27	-4.20	-0.76	7.4	11.0
10,128.0	88.02	359.76	9,446.8	720.3	-175.6	0.29	0.28	0.10	14.0	10.8
10,222.0	89.52	359.15	9,448.8	814.3	-176.5	1.72	1.60	-0.65	19.1	11.0
10,317.0	89.87	358.88	9,449.3	909.3	-178.1	0.47	0.37	-0.28	22.7	11.9
10,411.0	91.36	0.55	9,448.3	1,003.2	-178.6	2.38	1.59	1.78	24.7	11.7
10,505.0	91.10	0.20	9,446.3	1,097.2	-178.0	0.46	-0.28	-0.37	25.8	10.4
10,600.0	90.31	358.27	9,446.1	1,192.2	-179.2	2.20	-0.83	-2.03	27.8	10.9
10,694.0	91.54	359.23	9,443.6	1,286.2	-181.3	1.66	1.31	1.02	29.3	12.3
10,788.0	92.07	358.71	9,440.7	1,380.1	-183.0	0.79	0.56	-0.55	29.4	13.3
10,882.0	90.04	358.36	9,438.9	1,474.0	-185.4	2.19	-2.16	-0.37	30.8	15.0
10,976.0	89.52	357.39	9,439.3	1,568.0	-188.9	1.17	-0.55	-1.03	34.2	17.7
11,071.0	89.16	356.16	9,440.4	1,662.8	-194.2	1.35	-0.38	-1.29	38.5	22.4
11,159.0	89.66	357.88	9,441.3	1,750.7	-198.8	2.04	0.56	1.96	42.2	26.3
TGT#1(Neptune 10 St Com #101H)										
11,165.0	89.69	358.00	9,441.3	1,756.7	-199.0	2.04	0.56	1.96	42.5	26.5
11,259.0	89.69	0.99	9,441.8	1,850.7	-199.8	3.18	0.00	3.18	45.1	26.7
11,353.0	89.87	0.64	9,442.2	1,944.7	-198.5	0.42	0.19	-0.37	47.5	24.6
11,447.0	93.12	0.29	9,439.7	2,038.6	-197.7	3.48	3.46	-0.37	47.1	23.2
11,541.0	93.74	359.41	9,434.1	2,132.4	-198.0	1.14	0.66	-0.94	43.5	22.7
11,636.0	90.57	1.26	9,430.6	2,227.4	-197.4	3.86	-3.34	1.95	41.9	21.5
11,730.0	92.95	2.84	9,427.7	2,321.2	-194.1	3.04	2.53	1.68	41.0	17.4



EOG Resources
Midland PVA

Company:	EOG Resources - Midland	Local Co-ordinate Reference:	Well #101H
Project:	Lea County, NM (NAD 83 NME)	TVD Reference:	KB = 25 @ 3632.0usft
Site:	Neptune 10 State Com	MD Reference:	KB = 25 @ 3632.0usft
Well:	#101H	North Reference:	Grid
Wellbore:	OH	Survey Calculation Method:	Minimum Curvature
Design:	OH	Database:	EDM

MD (usft)	Inc (°)	Azi (azimuth) (°)	TVD (usft)	N/S (usft)	E/W (usft)	DLeg (°/100usft)	Build (°/100usft)	Turn (°/100usft)	High to Plan (usft)	Right to Plan (usft)
11,824.0	91.36	1.70	9,424.1	2,415.1	-190.3	2.08	-1.69	-1.21	39.5	13.0
11,917.0	87.85	1.61	9,424.8	2,508.0	-187.7	3.78	-3.77	-0.10	42.2	9.6
12,012.0	87.67	1.61	9,428.5	2,602.9	-185.0	0.19	-0.19	0.00	47.9	6.3
12,083.0	88.20	0.68	9,431.0	2,673.9	-183.6	1.50	0.74	-1.31	52.0	4.3
TGT#2(Neptune 10 St Com #101H)										
12,106.0	88.37	0.38	9,431.7	2,696.9	-183.4	1.50	0.75	-1.31	53.1	3.9
12,200.0	91.01	0.46	9,432.2	2,790.9	-182.7	2.81	2.81	0.09	53.9	2.5
12,294.0	91.36	359.85	9,430.3	2,884.8	-182.4	0.75	0.37	-0.65	51.8	1.6
12,388.0	91.01	359.06	9,428.4	2,978.8	-183.3	0.92	-0.37	-0.84	49.8	1.8
12,482.0	91.45	358.62	9,426.3	3,072.8	-185.2	0.66	0.47	-0.47	47.7	3.0
12,576.0	92.33	358.36	9,423.2	3,166.7	-187.7	0.98	0.94	-0.28	44.6	4.8
12,670.0	88.81	358.88	9,422.3	3,260.6	-190.0	3.79	-3.74	0.55	43.6	6.3
12,765.0	90.04	359.41	9,423.3	3,355.6	-191.4	1.41	1.29	0.56	44.5	7.0
12,859.0	90.22	0.82	9,423.0	3,449.6	-191.2	1.51	0.19	1.50	44.2	6.1
12,952.0	90.84	1.96	9,422.2	3,542.6	-188.9	1.40	0.67	1.23	43.2	3.2
13,031.9	91.13	2.04	9,420.8	3,622.4	-186.1	0.38	0.37	0.09	41.8	-0.2
TGT#3(Neptune 10 St Com #101H)										
13,047.0	91.19	2.05	9,420.5	3,637.5	-185.6	0.38	0.37	0.09	41.4	-0.8
13,141.0	90.13	0.03	9,419.4	3,731.5	-183.9	2.43	-1.13	-2.15	39.0	-3.2
13,235.0	87.14	357.83	9,421.7	3,825.4	-185.7	3.95	-3.18	-2.34	39.8	-2.1
13,329.0	86.70	358.09	9,426.7	3,919.2	-189.0	0.54	-0.47	0.28	43.4	0.5
13,424.0	87.58	358.71	9,431.4	4,014.1	-191.6	1.13	0.93	0.65	46.7	2.4
13,518.0	86.88	358.71	9,436.0	4,107.9	-193.8	0.74	-0.74	0.00	49.8	3.9
13,612.0	89.08	359.23	9,439.3	4,201.9	-195.4	2.40	2.34	0.55	51.6	4.8
13,697.6	90.28	359.39	9,439.8	4,287.4	-196.5	1.42	1.40	0.19	50.8	5.2
TGT#4(Neptune 10 St Com #101H)										
13,706.0	90.40	359.41	9,439.7	4,295.8	-196.6	1.42	1.40	0.19	50.6	5.3
13,800.0	89.67	358.71	9,439.5	4,389.8	-198.1	0.93	-0.56	-0.74	50.2	6.1



EOG Resources
Midland PVA

Company:	EOG Resources - Midland	Local Co-ordinate Reference:	Well #101H
Project:	Lea County, NM (NAD 83 NME)	TVD Reference:	KB = 25 @ 3632.0usft
Site:	Neptune 10 State Com	MD Reference:	KB = 25 @ 3632.0usft
Well:	#101H	North Reference:	Grid
Wellbore:	OH	Survey Calculation Method:	Minimum Curvature
Design:	OH	Database:	EDM

MD (usft)	Inc (°)	Azi (azimuth) (°)	TVD (usft)	N/S (usft)	E/W (usft)	DLeg (°/100usft)	Build (°/100usft)	Turn (°/100usft)	High to Plan (usft)	Right to Plan (usft)
13,894.0	92.15	359.50	9,437.8	4,483.8	-199.6	2.57	2.43	0.84	48.6	6.9
13,989.0	92.07	359.50	9,434.4	4,578.7	-200.4	0.08	-0.08	0.00	45.2	7.0
14,083.0	91.54	359.59	9,431.4	4,672.7	-201.1	0.57	-0.56	0.10	42.3	7.1
14,177.0	90.40	0.20	9,429.8	4,766.7	-201.3	1.38	-1.21	0.65	40.7	6.5
14,269.8	88.59	359.60	9,430.6	4,859.4	-201.5	2.05	-1.95	-0.64	41.6	6.0
TGT#5(Neptune 10 St Com #101H)										
14,272.0	88.55	359.59	9,430.7	4,861.7	-201.5	2.05	-1.95	-0.64	41.7	6.0
14,366.0	89.43	0.03	9,432.3	4,955.6	-201.8	1.05	0.94	0.47	44.0	5.6
14,460.0	89.52	359.41	9,433.2	5,049.6	-202.3	0.67	0.10	-0.66	45.5	5.4
14,555.0	89.25	358.80	9,434.2	5,144.6	-203.7	0.70	-0.28	-0.64	47.3	6.2
14,649.0	88.99	358.27	9,435.7	5,238.6	-206.1	0.63	-0.28	-0.56	49.4	7.9
14,744.0	89.87	358.44	9,436.6	5,333.5	-208.9	0.94	0.93	0.18	51.1	9.9
14,837.0	89.43	358.27	9,437.2	5,426.5	-211.5	0.51	-0.47	-0.18	52.3	11.9
14,932.0	90.31	359.23	9,437.4	5,521.5	-213.6	1.37	0.93	1.01	53.2	13.2
15,026.0	89.69	0.11	9,437.4	5,615.5	-214.2	1.15	-0.66	0.94	53.9	13.1
15,120.0	89.08	0.11	9,438.4	5,709.5	-214.0	0.65	-0.65	0.00	55.6	12.2
15,214.0	88.29	0.64	9,440.5	5,803.4	-213.4	1.01	-0.84	0.56	58.5	10.9
15,309.0	91.54	1.96	9,440.7	5,898.4	-211.2	3.69	3.42	1.39	59.3	8.1
15,403.0	91.80	1.52	9,437.9	5,992.3	-208.4	0.54	0.28	-0.47	57.3	4.5
15,498.0	92.07	1.52	9,434.7	6,087.2	-205.8	0.28	0.28	0.00	54.8	1.3
15,592.0	92.33	1.26	9,431.1	6,181.1	-203.6	0.39	0.28	-0.28	51.9	-1.7
15,626.7	91.39	0.96	9,430.0	6,215.8	-202.9	2.84	-2.71	-0.85	51.0	-2.6
TGT#6(Neptune 10 St Com #101H)										
15,686.0	89.78	0.46	9,429.4	6,275.1	-202.1	2.84	-2.71	-0.85	50.4	-3.8
15,781.0	90.13	0.99	9,429.5	6,370.1	-200.9	0.67	0.37	0.56	50.1	-5.7
15,875.0	87.23	359.94	9,431.6	6,464.0	-200.2	3.28	-3.09	-1.12	52.0	-7.2
15,969.0	89.69	0.64	9,434.2	6,558.0	-199.7	2.72	2.62	0.74	54.2	-8.3



Eog Resources
Midland PVA

Company:	Eog Resources - Midland
Project:	Lea County, NM (NAD 83 NME)
Site:	Neptune 10 State Com
Well:	#101H
Wellbore:	OH
Design:	OH

Local Co-ordinate Reference:	Well #101H
TVD Reference:	KB = 25 @ 3632.0ust
North Reference:	Gnd
Survey Calculation Method:	Minimum Curvature
Database:	EDM

MD	Inc	Azi (azimuth)	TVD	N/S	EW	Dleg	Build	Turn	High to Plan	Right to Plan
(ust)	(°)	(°)	(ust)	(ust)	(ust)	(/100ust)	(/100ust)	(/100ust)	(ust)	(ust)
18,063.0	88.46	0.20	9,439.7	6,652.0	-199.0	1.39	-1.31	-0.47	55.5	-9.7
16,157.0	87.85	359.50	9,438.7	6,745.9	-199.3	0.99	-0.65	-0.74	58.2	-10.2
16,252.0	88.55	358.97	9,441.7	6,840.9	-200.5	0.92	0.74	-0.56	60.9	-9.6
16,346.0	90.13	359.06	9,442.8	6,934.8	-202.1	1.68	1.68	0.10	61.7	-8.7
16,440.0	90.66	359.16	9,442.1	7,028.8	-203.6	0.57	0.56	0.10	60.7	-7.9
16,535.0	90.67	359.50	9,441.1	7,123.8	-204.7	0.38	-0.09	0.37	59.4	-7.5
16,629.0	89.87	359.16	9,440.7	7,217.8	-205.8	0.83	-0.74	-0.37	58.7	-7.1
16,723.0	89.69	0.03	9,441.1	7,311.8	-206.5	0.96	-0.19	0.94	58.8	-7.6
16,818.0	89.96	359.67	9,441.4	7,406.8	-208.8	0.47	0.28	-0.38	58.8	-7.6
16,912.0	91.10	0.46	9,440.5	7,500.8	-206.7	1.48	1.21	0.84	57.6	-8.4
17,007.0	89.60	1.61	9,440.0	7,595.8	-204.9	1.99	-1.58	1.21	56.7	-10.8
17,101.0	90.31	1.17	9,440.0	7,689.7	-202.7	0.89	0.76	-0.47	56.5	-13.8
17,195.0	90.31	0.38	9,439.6	7,783.7	-201.4	0.84	0.00	-0.84	55.7	-15.7
17,290.0	89.43	0.38	9,439.7	7,878.7	-200.8	0.93	-0.93	0.00	55.6	-17.1
17,384.0	90.66	0.73	9,439.7	7,972.7	-199.8	1.36	1.31	0.37	55.3	-18.7
17,479.0	91.10	0.99	9,438.2	8,067.7	-198.4	0.54	0.46	0.27	53.5	-20.8
17,573.0	90.84	1.26	9,438.6	8,161.7	-198.6	0.40	-0.28	0.29	51.6	-23.3
17,668.0	91.45	359.16	9,434.7	8,256.6	-196.2	2.31	0.64	-2.22	49.4	-24.4
17,762.0	90.84	359.41	9,432.8	8,350.6	-197.4	0.71	-0.65	0.28	47.2	-23.9
17,856.0	87.93	357.74	9,433.8	8,444.6	-199.8	3.57	-3.10	-1.78	48.0	-22.2
17,950.0	87.23	358.00	9,437.8	8,538.4	-203.2	0.79	-0.74	0.28	51.6	-19.5
18,045.0	88.90	358.09	9,441.0	8,633.3	-206.5	1.76	1.76	0.09	54.5	-16.9
18,139.0	89.25	358.00	9,442.5	8,727.2	-209.7	0.38	0.37	-0.10	56.8	-14.4
18,233.0	87.49	357.56	9,445.2	8,821.1	-213.3	1.93	-1.87	-0.47	58.1	-11.5
18,327.0	91.01	358.82	9,446.4	8,915.1	-216.5	3.91	3.74	1.13	59.1	-9.0
18,422.0	90.84	358.80	9,444.9	9,010.0	-218.6	0.26	-0.18	0.19	57.2	-7.6
18,516.0	90.57	358.80	9,443.7	9,104.0	-220.6	0.29	-0.29	0.00	55.8	-6.3



EOG Resources
Midland PVA

Company:	EOG Resources - Midland	Local Co-ordinate Reference:	Well #101H
Project:	Lea County, NM (NAD 83 NME)	TVD Reference:	KB = 25 @ 3632.0usft
Site:	Neptune 10 State Com	MD Reference:	KB = 25 @ 3632.0usft
Well:	#101H	North Reference:	Grid
Wellbore:	OH	Survey Calculation Method:	Minimum Curvature
Design:	OH	Database:	EDM

MD (usft)	Inc (°)	Azi (azimuth) (°)	TVD (usft)	N/S (usft)	E/W (usft)	DLeg (°/100usft)	Build (°/100usft)	Turn (°/100usft)	High to Plan (usft)	Right to Plan (usft)
18,510.0	88.81	358.36	9,444.3	9,198.0	-222.9	1.93	-1.87	-0.47	56.0	-4.7
18,704.0	89.52	358.27	9,445.6	9,291.9	-225.7	0.76	0.76	-0.10	57.1	-2.6
18,798.0	92.24	359.59	9,444.2	9,385.9	-227.4	3.22	2.89	1.40	55.3	-1.6
18,844.0	91.94	359.25	9,442.5	9,431.8	-227.9	0.98	-0.64	-0.75	53.5	-1.4
TGT#7(Neptune 10 St Com #101H)										
18,893.0	91.63	358.88	9,441.0	9,480.8	-228.7	0.98	-0.64	-0.75	51.4	-1.0
18,987.0	91.45	358.80	9,438.4	9,574.7	-230.6	0.21	-0.19	-0.09	46.8	0.2
19,081.0	90.66	358.27	9,436.7	9,668.7	-233.0	1.01	-0.84	-0.56	43.1	1.9
19,175.0	90.40	358.80	9,435.8	9,762.7	-235.4	0.63	-0.28	0.56	40.2	3.6
19,269.0	90.57	359.67	9,435.1	9,856.7	-236.6	0.94	0.18	0.93	37.3	4.2
19,364.0	91.28	359.15	9,433.5	9,951.6	-237.6	0.93	0.75	-0.55	33.8	4.5
19,458.0	91.89	358.71	9,430.9	10,045.6	-239.4	0.80	0.65	-0.47	29.1	5.5
19,551.0	90.66	358.53	9,428.8	10,138.5	-241.6	1.34	-1.32	-0.19	25.1	7.1
Last MWD Survey (MD=19551.0')										
19,607.0	90.66	358.53	9,428.2	10,194.5	-243.1	0.00	0.00	0.00	23.2	8.1
Projection to Bit (MD=19607.0') - PBHL (Neptune 10 St Com #101H)										

Design Annotations				
Measured Depth (usft)	Vertical Depth (usft)	Local Coordinates		Comment
		+N/-S (usft)	+E/-W (usft)	
8,851.0	8,851.3	-232.8	-152.1	KOP, MD:8861.0', TVD:8851.3', N/S:-232.8', E/W:-152.1', INC:2.65
9,147.3	9,122.1	-151.0	-161.4	FTP Crossing, MD:9147.3', TVD:9122.1', N/S:-151.0', E/W:-161.4', INC:32.19
19,551.0	9,428.8	10,138.5	-241.6	Last MWD Survey (MD=19551.0')
19,607.0	9,428.2	10,194.5	-243.1	Projection to Bit (MD=19607.0')

Checked By: _____ Approved By: _____ Date: _____

I certify this survey to be true and correct to the best of my belief and knowledge.

Kay Maddox 11/18/2020

Signed

Date



Lea County, NM (NAD 83 NME)

Neptune 10 State Com

#101H

Plan #1

PROJECT DETAILS: Lea County, NM (NAD 83 NME)

Geodetic System: US State Plane 1983
Datum: North American Datum 1983
Ellipsoid: GRS 1980
Zone: New Mexico Eastern Zone
System Datum: Mean Sea Level



Azimuths to Grid North
True North: -0.42°
Magnetic North: 6.23°

Magnetic Field
Strength: 47059.6nT
Dip Angle: 69.03°
Date: 3/7/2020
Model: IGRF2015

To convert a Magnetic Direction to a Grid Direction, Add 6.23°
To convert a Magnetic Direction to a True Direction, Add 6.65° East
To convert a True Direction to a Grid Direction, Subtract 0.42°

WELL DETAILS: #101H

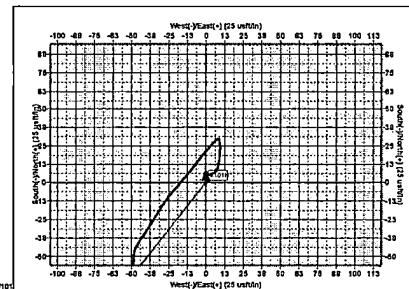
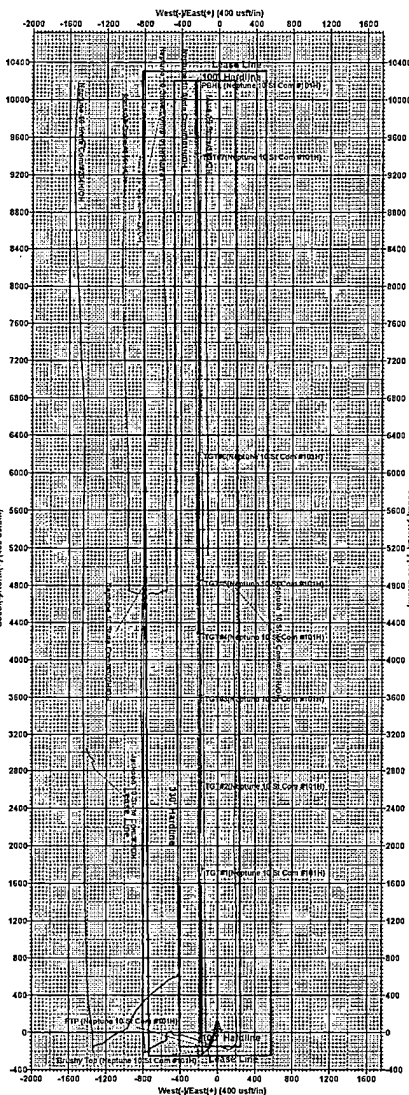
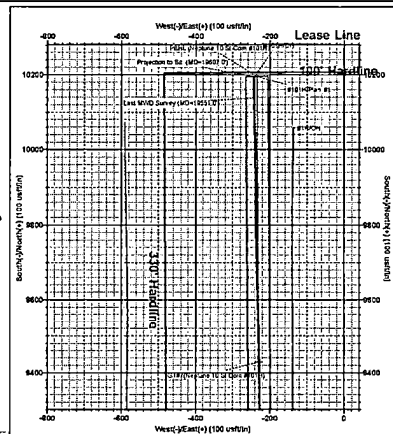
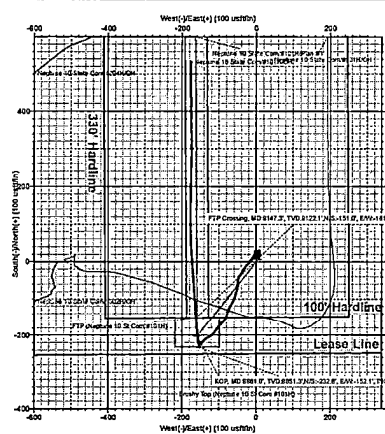
3637.0
KB = 25 @ 3632.0m
Northing 446664.00 Easting 782475.00 32° 13' 31.550 N Longitude 103° 33' 12.725 W Slot

SECTION DETAILS

Sec	MD	Inc	Azi	TYD	+N-S	+E-W	Dieg	TFace	Vsect	Target
1	0.0	0.00	0.00	0.0	0.0	0.0	0.00	0.00	0.0	
2	3650.0	0.00	0.00	3650.0	0.0	0.0	0.00	0.00	0.0	
3	3890.0	4.00	218.17	3889.8	-4.8	-4.3	2.00	218.17	-5.4	
4	7354.8	4.00	218.17	7346.1	-195.6	-153.7	0.00	0.00	-191.9	
5	7554.8	0.00	0.00	7546.0	-201.0	-158.0	2.00	180.00	-197.3	Brushy Top (Neptune 10 St Com #101H)
6	8979.8	0.00	0.00	8971.0	-201.0	-158.0	0.00	0.00	-197.3	TGT#1 (Neptune 10 St Com #101H)
7	9798.5	91.88	359.58	9443.7	390.7	-102.4	10.00	359.58	394.4	TGT#2 (Neptune 10 St Com #101H)
8	11161.1	91.88	359.58	9399.0	1752.5	-172.5	0.00	0.00	1756.0	TGT#3 (Neptune 10 St Com #101H)
9	11193.5	91.23	359.58	9398.1	1784.9	-172.7	2.00	180.00	1788.4	TGT#4 (Neptune 10 St Com #101H)
10	12084.4	91.23	359.58	9379.0	2675.6	-179.3	0.00	0.00	2679.0	TGT#5 (Neptune 10 St Com #101H)
11	12148.1	89.98	359.58	9378.3	2739.2	-179.8	2.00	180.00	2742.6	TGT#6 (Neptune 10 St Com #101H)
12	13030.5	89.98	359.58	9379.0	3621.7	-186.3	0.00	0.00	3625.8	TGT#7 (Neptune 10 St Com #101H)
13	13072.8	89.11	359.58	9375.3	3663.9	-186.6	2.00	180.00	3672.2	TGT#8 (Neptune 10 St Com #101H)
14	13696.7	89.11	359.58	9389.0	4287.7	-191.2	0.00	0.00	4291.0	TGT#9 (Neptune 10 St Com #101H)
15	13742.9	90.04	359.58	9389.3	4333.9	-191.6	2.00	0.00	4337.2	TGT#10 (Neptune 10 St Com #101H)
16	14288.8	90.04	359.58	9389.0	4899.8	-195.5	0.00	0.00	4863.0	TGT#11 (Neptune 10 St Com #101H)
17	14288.2	90.43	359.58	9388.9	4879.2	-195.6	2.00	0.00	4882.4	TGT#12 (Neptune 10 St Com #101H)
18	15624.0	90.43	359.58	9379.0	6214.8	-205.5	0.00	0.00	6218.0	TGT#13 (Neptune 10 St Com #101H)
19	15654.3	89.82	359.58	9378.9	6245.2	-205.7	2.00	179.95	6248.3	TGT#14 (Neptune 10 St Com #101H)
20	16839.2	89.82	359.58	9389.0	9430.0	-229.3	0.00	0.00	9432.8	TGT#15 (Neptune 10 St Com #101H)
21	16891.7	88.77	359.57	9389.6	9482.6	-229.7	2.00	-175.86	9485.3	PBHL (Neptune 10 St Com #101H)
22	18605.4	88.77	359.57	9405.0	10196.0	-235.0	0.00	0.00	10198.7	

WELLBORE TARGET DETAILS (MAP CO-ORDINATES)

Name	TYD	+N-S	+E-W	Northing	Easting	Shape
Brushy Top (Neptune 10 St Com #101H)	7546.0	-201.0	-158.0	446663.00	782317.00	Polygon
TGT#1 (Neptune 10 St Com #101H)	9378.0	2675.6	-179.3	449339.60	782295.70	Point
TGT#2 (Neptune 10 St Com #101H)	9375.0	3621.7	-186.3	450285.70	782308.59	Point
TGT#3 (Neptune 10 St Com #101H)	9378.0	6214.8	-205.5	452878.50	782269.48	Point
TGT#4 (Neptune 10 St Com #101H)	9389.0	4287.7	-191.2	450951.70	782283.76	Point
TGT#5 (Neptune 10 St Com #101H)	9389.0	4899.8	-195.5	451823.00	782279.82	Point
TGT#6 (Neptune 10 St Com #101H)	9389.0	9430.0	-229.3	450934.00	782245.70	Point
TGT#7 (Neptune 10 St Com #101H)	9389.0	1752.5	-172.5	448416.50	782302.53	Point
PBHL (Neptune 10 St Com #101H)	9405.0	10196.0	-235.0	450890.00	782310.00	Rectangle (Sides: L=0 W=50.0)
FTP (Neptune 10 St Com #101H)	9439.0	-161.0	-158.0	449513.00	782317.00	Point



Lea County, NM (NAD 83 NME)
Neptune 10 State Com
#101H
Plan #1