

DISTRICT I
1625 N. French Dr., Hobbs, NM 88240
Phone: (575) 393-6161 Fax: (575) 393-0720

DISTRICT II
811 S. First St., Artesia, NM 88210
Phone: (575) 748-1283 Fax: (575) 748-9720

DISTRICT III
1000 Rio Brazos Road, Aztec, NM 87410
Phone: (505) 334-6178 Fax: (505) 334-6170

DISTRICT IV
1220 S. St. Francis Dr., Santa Fe, NM 87505
Phone: (505) 476-3460 Fax: (505) 476-3462

State of New Mexico
Energy, Minerals & Natural Resources Department
OIL CONSERVATION DIVISION
1220 South St. Francis Dr.
Santa Fe, New Mexico 87505

Revised August 1, 2011
Submit one copy to appropriate
District Office

X AMENDED REPORT
AS DRILLED PLAT

WELL LOCATION AND ACREAGE DEDICATION PLAT

| | | |
|-----------------------------------|--|--|
| API Number 30-025-46087 | Pool Code 98094 | Pool Name BOBCAT DRAW - UPPER WOLFCAMP |
| Property Code 322775 | Property Name ROJO 7811 22 FEDERAL COM | Well Number 25H |
| OGRID No. 260297 | Operator Name BTA OIL PRODUCERS, LLC | Elevation 3347' |

| UL or lot No. | Section | Township | Range | Lot Idn | Feet from the | North/South line | Feet from the | East/West line | County |
|---------------|---------|----------|-------|---------|---------------|------------------|---------------|----------------|--------|
| N | 22 | 25-S | 33-E | | 220 | SOUTH | 1360 | WEST | LEA |

AS-Drilled Bottom Hole Location If Different From Surface

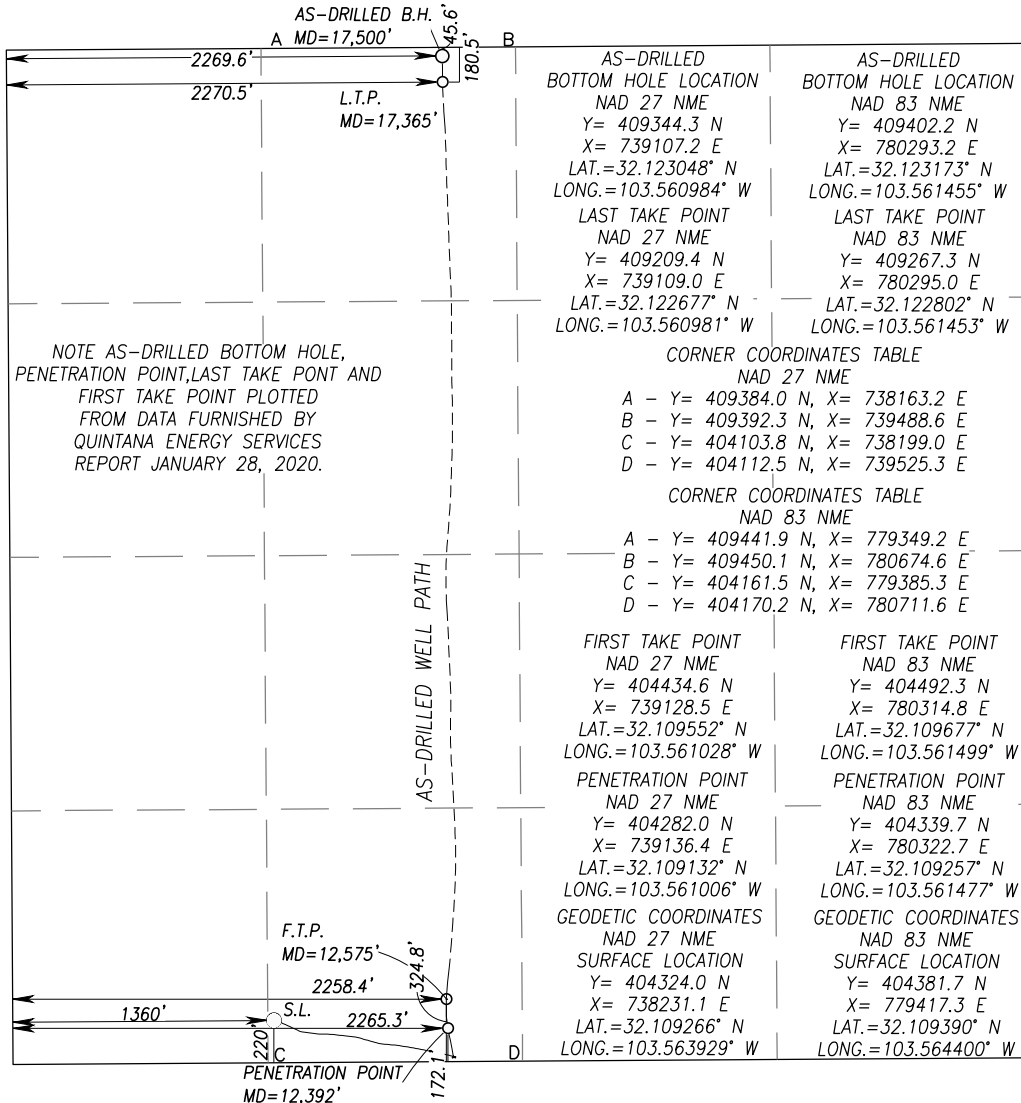
| UL or lot No. | Section | Township | Range | Lot Idn | Feet from the | North/South line | Feet from the | East/West line | County |
|---------------|---------|----------|-------|---------|---------------|------------------|---------------|----------------|--------|
| C | 22 | 25-S | 33-E | | 45.6 | NORTH | 2269.6 | WEST | LEA |

Penetration Point Location

| UL or lot No. | Section | Township | Range | Lot Idn | Feet from the | North/South line | Feet from the | East/West line | County |
|---------------|---------|----------|-------|---------|---------------|------------------|---------------|----------------|--------|
| N | 22 | 25-S | 33-E | | 172.1 | SOUTH | 2265.3 | WEST | LEA |

| Dedicated Acres | Joint or Infill | Consolidation Code | Order No. |
|-----------------|-----------------|--------------------|-----------|
| 160 | | | |

NO ALLOWABLE WILL BE ASSIGNED TO THIS COMPLETION UNTIL ALL INTERESTS HAVE BEEN CONSOLIDATED OR A NON-STANDARD UNIT HAS BEEN APPROVED BY THE DIVISION



OPERATOR CERTIFICATION

I hereby certify that the information herein is true and complete to the best of my knowledge and belief, and that this organization either owns a working interest or unleased mineral interest in the land including the proposed bottom hole location or has a right to drill this well at this location pursuant to a contract with an owner of such mineral or working interest, or to a voluntary pooling agreement or a compulsory pooling order heretofore entered by the division.

KATY REDDELL 9/10/20

Signature Date

KATY REDDELL

Printed Name

kreddell@btaoil.com

E-mail Address

kreddell@btaoil.com

SURVEYOR CERTIFICATION

I hereby certify that the well location shown on this plat was plotted from field notes of actual surveys made by me or under my supervision, and that the same is true and correct to the best of my belief.

JANUARY 19, 2017

Date of Survey

Signature & Seal of Professional Surveyor:

RONALD J. EIDSON
NEW MEXICO
REGISTERED SURVEYOR
3239
08/28/2020

Certificate Number Gary G. Eidson 12641
Ronald J. Eidson 3239

LSL Rel.W.O.: 17.13.0500 JWSC W.O.: 20.13.0396