

30-025-40533



## Mack Energy Corp

Eddy County

Black Jack State Com #1

State Com #1

#1

Plan: Plan #1

## MEC Survey Report

16 April, 2012





**MEC**  
MEC Survey Report



<b>Company:</b> Mack Energy Corp	<b>Local Co-ordinate Reference:</b> Site Black Jack State Com #1
<b>Project:</b> Eddy County	<b>TVD Reference:</b> WELL @ 3973.5usft (Original Well Elev)
<b>Site:</b> Black Jack State Com #1	<b>MD Reference:</b> WELL @ 3973.5usft (Original Well Elev)
<b>Well:</b> State Com #1	<b>North Reference:</b> Grid
<b>Wellbore:</b> #1	<b>Survey Calculation Method:</b> Minimum Curvature
<b>Design:</b> Plan #1	<b>Database:</b> EDM 5000 1 Single User Db

<b>Project</b> Eddy County	<b>System Datum:</b> Mean Sea Level
<b>Map System:</b> US State Plane 1927 (Exact solution)	
<b>Geo Datum:</b> NAD 1927 (NADCON CONUS)	
<b>Map Zone:</b> New Mexico East 3001	

<b>Site</b> Black Jack State Com #1			
<b>Site Position:</b>	<b>Northing:</b> 636,392.50 usft	<b>Latitude:</b> 32° 44' 48.091 N	
<b>From:</b> Map	<b>Easting:</b> 759,640.40 usft	<b>Longitude:</b> 103° 29' 19.921 W	
<b>Position Uncertainty:</b> 0.0 usft	<b>Slot Radius:</b> 13-3/16 "	<b>Grid Convergence:</b> 0.46 °	

<b>Well</b> State Com #1				
<b>Well Position</b> +N-S 0.0 usft	<b>Northing:</b> 636,392.50 usft	<b>Latitude:</b> 32° 44' 48.091 N		
+E-W 0.0 usft	<b>Easting:</b> 759,640.40 usft	<b>Longitude:</b> 103° 29' 19.921 W		
<b>Position Uncertainty</b> 0.0 usft	<b>Wellhead Elevation:</b> usft	<b>Ground Level:</b> 3,956.0 usft		

<b>Wellbore</b> #1					
<b>Magnetics</b>	<b>Model Name</b>	<b>Sample Date</b>	<b>Declination</b>	<b>Dip Angle</b>	<b>Field Strength</b>
			(°)	(°)	(nT)
	IGRF200510	4/16/2012	7.47	60.69	48,890

<b>Design</b> Plan #1				
<b>Audit Notes:</b>				
<b>Version:</b>	<b>Phase:</b> PROTOTYPE	<b>Tie On Depth:</b> 0.0		
<b>Vertical Section:</b>	<b>Depth From (TVD)</b>	<b>+N-S</b>	<b>+E-W</b>	<b>Direction</b>
	(usft)	(usft)	(usft)	(°)
	0.0	0.0	0.0	269.84

<b>Survey Tool Program</b>	<b>Date</b> 4/16/2012			
<b>From</b>	<b>To</b>	<b>Survey (Wellbore)</b>	<b>Tool Name</b>	<b>Description</b>
(usft)	(usft)			
0.0	13,588.3	Plan #1 (#1)		



**MEC**  
MEC Survey Report



Company: Mack Energy Corp  
 Project: Eddy County  
 Site: Black Jack State Com #1  
 Well: State Com #1  
 Wellbore: #1  
 Design: Plan #1

Local Co-ordinate Reference: Site Black Jack State Com #1  
 TVD Reference: WELL @ 3973.5usft (Original Well Elev)  
 MD Reference: WELL @ 3973.5usft (Original Well Elev)  
 North Reference: Grid  
 Survey Calculation Method: Minimum Curvature  
 Database: EDM 5000.1 Single User Db

**Planned Survey**

MD (usft)	Inc (°)	Azi (azimuth) (°)	TVD (usft)	N/S (usft)	E/W (usft)	V. Sec (usft)	DLeg (°/100usft)	Northing (usft)	Easting (usft)
0.0	0.00	0.00	0.0	0.0	0.0	0.0	0.00	636,392.50	759,640.40
100.0	0.00	0.00	100.0	0.0	0.0	0.0	0.00	636,392.50	759,640.40
200.0	0.00	0.00	200.0	0.0	0.0	0.0	0.00	636,392.50	759,640.40
300.0	0.00	0.00	300.0	0.0	0.0	0.0	0.00	636,392.50	759,640.40
400.0	0.00	0.00	400.0	0.0	0.0	0.0	0.00	636,392.50	759,640.40
500.0	0.00	0.00	500.0	0.0	0.0	0.0	0.00	636,392.50	759,640.40
600.0	0.00	0.00	600.0	0.0	0.0	0.0	0.00	636,392.50	759,640.40
700.0	0.00	0.00	700.0	0.0	0.0	0.0	0.00	636,392.50	759,640.40
800.0	0.00	0.00	800.0	0.0	0.0	0.0	0.00	636,392.50	759,640.40
900.0	0.00	0.00	900.0	0.0	0.0	0.0	0.00	636,392.50	759,640.40
1,000.0	0.00	0.00	1,000.0	0.0	0.0	0.0	0.00	636,392.50	759,640.40
1,100.0	0.00	0.00	1,100.0	0.0	0.0	0.0	0.00	636,392.50	759,640.40
1,200.0	0.00	0.00	1,200.0	0.0	0.0	0.0	0.00	636,392.50	759,640.40
1,300.0	0.00	0.00	1,300.0	0.0	0.0	0.0	0.00	636,392.50	759,640.40
1,400.0	0.00	0.00	1,400.0	0.0	0.0	0.0	0.00	636,392.50	759,640.40
1,500.0	0.00	0.00	1,500.0	0.0	0.0	0.0	0.00	636,392.50	759,640.40
1,600.0	0.00	0.00	1,600.0	0.0	0.0	0.0	0.00	636,392.50	759,640.40
1,700.0	0.00	0.00	1,700.0	0.0	0.0	0.0	0.00	636,392.50	759,640.40
1,800.0	0.00	0.00	1,800.0	0.0	0.0	0.0	0.00	636,392.50	759,640.40
1,900.0	0.00	0.00	1,900.0	0.0	0.0	0.0	0.00	636,392.50	759,640.40
2,000.0	0.00	0.00	2,000.0	0.0	0.0	0.0	0.00	636,392.50	759,640.40
2,100.0	0.00	0.00	2,100.0	0.0	0.0	0.0	0.00	636,392.50	759,640.40
2,200.0	0.00	0.00	2,200.0	0.0	0.0	0.0	0.00	636,392.50	759,640.40
2,300.0	0.00	0.00	2,300.0	0.0	0.0	0.0	0.00	636,392.50	759,640.40
2,400.0	0.00	0.00	2,400.0	0.0	0.0	0.0	0.00	636,392.50	759,640.40
2,500.0	0.00	0.00	2,500.0	0.0	0.0	0.0	0.00	636,392.50	759,640.40
2,600.0	0.00	0.00	2,600.0	0.0	0.0	0.0	0.00	636,392.50	759,640.40



**MEC**  
MEC Survey Report



**Company:** Mack Energy Corp  
**Project:** Eddy County  
**Site:** Black Jack State Com #1  
**Well:** State Com #1  
**Wellbore:** #1  
**Design:** Plan #1

**Local Co-ordinate Reference:** Site Black Jack State Com #1  
**TVD Reference:** WELL @ 3973.5usft (Original Well Elev)  
**MD Reference:** WELL @ 3973.5usft (Original Well Elev)  
**North Reference:** Grid  
**Survey Calculation Method:** Minimum Curvature  
**Database:** EDM 5000.1 Single User Db

**Planned Survey**

MD (usft)	Inc (°)	Azi (azimuth) (°)	TVD (usft)	N/S (usft)	E/W (usft)	V. Sec (usft)	DLeg (°/100usft)	Northing (usft)	Easting (usft)
2,700.0	0.00	0.00	2,700.0	0.0	0.0	0.0	0.00	636,392.50	759,640.40
2,800.0	0.00	0.00	2,800.0	0.0	0.0	0.0	0.00	636,392.50	759,640.40
2,900.0	0.00	0.00	2,900.0	0.0	0.0	0.0	0.00	636,392.50	759,640.40
3,000.0	0.00	0.00	3,000.0	0.0	0.0	0.0	0.00	636,392.50	759,640.40
3,100.0	0.00	0.00	3,100.0	0.0	0.0	0.0	0.00	636,392.50	759,640.40
3,200.0	0.00	0.00	3,200.0	0.0	0.0	0.0	0.00	636,392.50	759,640.40
3,300.0	0.00	0.00	3,300.0	0.0	0.0	0.0	0.00	636,392.50	759,640.40
3,400.0	0.00	0.00	3,400.0	0.0	0.0	0.0	0.00	636,392.50	759,640.40
3,500.0	0.00	0.00	3,500.0	0.0	0.0	0.0	0.00	636,392.50	759,640.40
3,600.0	0.00	0.00	3,600.0	0.0	0.0	0.0	0.00	636,392.50	759,640.40
3,700.0	0.00	0.00	3,700.0	0.0	0.0	0.0	0.00	636,392.50	759,640.40
3,800.0	0.00	0.00	3,800.0	0.0	0.0	0.0	0.00	636,392.50	759,640.40
3,900.0	0.00	0.00	3,900.0	0.0	0.0	0.0	0.00	636,392.50	759,640.40
4,000.0	0.00	0.00	4,000.0	0.0	0.0	0.0	0.00	636,392.50	759,640.40
4,100.0	0.00	0.00	4,100.0	0.0	0.0	0.0	0.00	636,392.50	759,640.40
4,200.0	0.00	0.00	4,200.0	0.0	0.0	0.0	0.00	636,392.50	759,640.40
4,300.0	0.00	0.00	4,300.0	0.0	0.0	0.0	0.00	636,392.50	759,640.40
4,400.0	0.00	0.00	4,400.0	0.0	0.0	0.0	0.00	636,392.50	759,640.40
4,500.0	0.00	0.00	4,500.0	0.0	0.0	0.0	0.00	636,392.50	759,640.40
4,600.0	0.00	0.00	4,600.0	0.0	0.0	0.0	0.00	636,392.50	759,640.40
4,700.0	0.00	0.00	4,700.0	0.0	0.0	0.0	0.00	636,392.50	759,640.40
4,800.0	0.00	0.00	4,800.0	0.0	0.0	0.0	0.00	636,392.50	759,640.40
4,900.0	0.00	0.00	4,900.0	0.0	0.0	0.0	0.00	636,392.50	759,640.40
5,000.0	0.00	0.00	5,000.0	0.0	0.0	0.0	0.00	636,392.50	759,640.40
5,100.0	0.00	0.00	5,100.0	0.0	0.0	0.0	0.00	636,392.50	759,640.40
5,200.0	0.00	0.00	5,200.0	0.0	0.0	0.0	0.00	636,392.50	759,640.40
5,300.0	0.00	0.00	5,300.0	0.0	0.0	0.0	0.00	636,392.50	759,640.40



**MEC**  
MEC Survey Report



<b>Company:</b>	Mack Energy Corp	<b>Local Co-ordinate Reference:</b>	Site Black Jack State Com #1
<b>Project:</b>	Eddy County	<b>TVD Reference:</b>	WELL @ 3973.5usft (Original Well Elev)
<b>Site:</b>	Black Jack State Com #1	<b>MD Reference:</b>	WELL @ 3973.5usft (Original Well Elev)
<b>Well:</b>	State Com #1	<b>North Reference:</b>	Grid
<b>Wellbore:</b>	#1	<b>Survey Calculation Method:</b>	Minimum Curvature
<b>Design:</b>	Plan #1	<b>Database:</b>	EDM 5000.1 Single User Db

Planned Survey											
MD (usft)	Inc (°)	Azi (azimuth) (°)		TVD (usft)	N/S (usft)	E/W (usft)	V. Sec (usft)	DLeg (°/100usft)	Northing (usft)	Easting (usft)	
5,400.0	0.00	0.00	0.00	5,400.0	0.0	0.0	0.0	0.00	636,392.50	759,640.40	
5,500.0	0.00	0.00	0.00	5,500.0	0.0	0.0	0.0	0.00	636,392.50	759,640.40	
5,600.0	0.00	0.00	0.00	5,600.0	0.0	0.0	0.0	0.00	636,392.50	759,640.40	
5,700.0	0.00	0.00	0.00	5,700.0	0.0	0.0	0.0	0.00	636,392.50	759,640.40	
5,800.0	0.00	0.00	0.00	5,800.0	0.0	0.0	0.0	0.00	636,392.50	759,640.40	
5,900.0	0.00	0.00	0.00	5,900.0	0.0	0.0	0.0	0.00	636,392.50	759,640.40	
6,000.0	0.00	0.00	0.00	6,000.0	0.0	0.0	0.0	0.00	636,392.50	759,640.40	
6,100.0	0.00	0.00	0.00	6,100.0	0.0	0.0	0.0	0.00	636,392.50	759,640.40	
6,200.0	0.00	0.00	0.00	6,200.0	0.0	0.0	0.0	0.00	636,392.50	759,640.40	
6,300.0	0.00	0.00	0.00	6,300.0	0.0	0.0	0.0	0.00	636,392.50	759,640.40	
6,400.0	0.00	0.00	0.00	6,400.0	0.0	0.0	0.0	0.00	636,392.50	759,640.40	
6,500.0	0.00	0.00	0.00	6,500.0	0.0	0.0	0.0	0.00	636,392.50	759,640.40	
6,600.0	0.00	0.00	0.00	6,600.0	0.0	0.0	0.0	0.00	636,392.50	759,640.40	
6,700.0	0.00	0.00	0.00	6,700.0	0.0	0.0	0.0	0.00	636,392.50	759,640.40	
6,800.0	0.00	0.00	0.00	6,800.0	0.0	0.0	0.0	0.00	636,392.50	759,640.40	
6,900.0	0.00	0.00	0.00	6,900.0	0.0	0.0	0.0	0.00	636,392.50	759,640.40	
7,000.0	0.00	0.00	0.00	7,000.0	0.0	0.0	0.0	0.00	636,392.50	759,640.40	
7,100.0	0.00	0.00	0.00	7,100.0	0.0	0.0	0.0	0.00	636,392.50	759,640.40	
7,200.0	0.00	0.00	0.00	7,200.0	0.0	0.0	0.0	0.00	636,392.50	759,640.40	
7,300.0	0.00	0.00	0.00	7,300.0	0.0	0.0	0.0	0.00	636,392.50	759,640.40	
7,400.0	0.00	0.00	0.00	7,400.0	0.0	0.0	0.0	0.00	636,392.50	759,640.40	
7,500.0	0.00	0.00	0.00	7,500.0	0.0	0.0	0.0	0.00	636,392.50	759,640.40	
7,600.0	0.00	0.00	0.00	7,600.0	0.0	0.0	0.0	0.00	636,392.50	759,640.40	
7,700.0	0.00	0.00	0.00	7,700.0	0.0	0.0	0.0	0.00	636,392.50	759,640.40	
7,800.0	0.00	0.00	0.00	7,800.0	0.0	0.0	0.0	0.00	636,392.50	759,640.40	
7,900.0	0.00	0.00	0.00	7,900.0	0.0	0.0	0.0	0.00	636,392.50	759,640.40	
8,000.0	0.00	0.00	0.00	8,000.0	0.0	0.0	0.0	0.00	636,392.50	759,640.40	



MEC  
MEC Survey Report



Company: Mack Energy Corp  
 Project: Eddy County  
 Site: Black Jack State Com #1  
 Well: State Com #1  
 Wellbore: #1  
 Design: Plan #1

Local Co-ordinate Reference: Site Black Jack State Com #1  
 TVD Reference: WELL @ 3973.5usft (Original Well Elev)  
 MD Reference: WELL @ 3973.5usft (Original Well Elev)  
 North Reference: Grid  
 Survey Calculation Method: Minimum Curvature  
 Database: EDM 5000.1 Single User Db

Planned Survey

MD (usft)	Inc (°)	Azi (azimuth) (°)	TVD (usft)	N/S (usft)	E/W (usft)	V. Sec (usft)	DLeg (°/100usft)	Northing (usft)	Easting (usft)
8,100.0	0.00	0.00	8,100.0	0.0	0.0	0.0	0.00	636,392.50	759,640.40
8,200.0	0.00	0.00	8,200.0	0.0	0.0	0.0	0.00	636,392.50	759,640.40
8,300.0	0.00	0.00	8,300.0	0.0	0.0	0.0	0.00	636,392.50	759,640.40
8,400.0	0.00	0.00	8,400.0	0.0	0.0	0.0	0.00	636,392.50	759,640.40
8,500.0	0.00	0.00	8,500.0	0.0	0.0	0.0	0.00	636,392.50	759,640.40
8,600.0	0.00	0.00	8,600.0	0.0	0.0	0.0	0.00	636,392.50	759,640.40
8,693.0	0.00	0.00	8,693.0	0.0	0.0	0.0	0.00	636,392.50	759,640.40
8,700.0	0.70	269.84	8,700.0	0.0	0.0	0.0	10.03	636,392.50	759,640.36
8,750.0	5.72	269.84	8,749.9	0.0	-2.8	2.8	10.03	636,392.49	759,637.56
8,800.0	10.73	269.84	8,799.4	0.0	-10.0	10.0	10.03	636,392.47	759,630.41
8,850.0	15.74	269.84	8,848.0	-0.1	-21.4	21.4	10.03	636,392.44	759,618.97
8,900.0	20.76	269.84	8,895.5	-0.1	-37.1	37.1	10.03	636,392.40	759,603.31
8,950.0	25.77	269.84	8,941.4	-0.2	-56.8	56.8	10.03	636,392.34	759,583.57
9,000.0	30.79	269.84	8,985.4	-0.2	-80.5	80.5	10.03	636,392.28	759,559.89
9,050.0	35.80	269.84	9,027.2	-0.3	-107.9	107.9	10.03	636,392.20	759,532.45
9,100.0	40.81	269.84	9,066.4	-0.4	-138.9	138.9	10.03	636,392.11	759,501.47
9,150.0	45.83	269.84	9,102.8	-0.5	-173.2	173.2	10.03	636,392.02	759,467.18
9,200.0	50.84	269.84	9,136.0	-0.6	-210.6	210.6	10.03	636,391.91	759,429.84
9,250.0	55.85	269.84	9,165.9	-0.7	-250.7	250.7	10.03	636,391.80	759,389.74
9,300.0	60.87	269.84	9,192.1	-0.8	-293.2	293.2	10.03	636,391.68	759,347.18
9,350.0	65.88	269.84	9,214.5	-0.9	-337.9	337.9	10.03	636,391.56	759,302.50
9,400.0	70.90	269.84	9,232.9	-1.1	-384.4	384.4	10.03	636,391.43	759,256.03
9,450.0	75.91	269.84	9,247.2	-1.2	-432.3	432.3	10.03	636,391.29	759,208.13
9,500.0	80.92	269.84	9,257.2	-1.3	-481.2	481.2	10.03	636,391.16	759,159.16
9,550.0	85.94	269.84	9,262.9	-1.5	-530.9	530.9	10.03	636,391.02	759,109.51
9,599.3	90.89	269.84	9,264.3	-1.6	-580.2	580.2	10.03	636,390.88	759,060.20
9,619.1	90.89	269.84	9,264.0	-1.7	-600.0	600.0	0.00	636,390.82	759,040.40



**MEC**  
MEC Survey Report



**Company:** Mack Energy Corp  
**Project:** Eddy County  
**Site:** Black Jack State Com #1  
**Well:** State Com #1  
**Wellbore:** #1  
**Design:** Plan #1

**Local Co-ordinate Reference:** Site Black Jack State Com #1  
**TVD Reference:** WELL @ 3973.5usft (Original Well Elev)  
**MD Reference:** WELL @ 3973.5usft (Original Well Elev)  
**North Reference:** Grid  
**Survey Calculation Method:** Minimum Curvature  
**Database:** EDM 5000.1 Single User Db

**Planned Survey**

MD (usft)	Inc (°)	Azi (azimuth) (°)	TVD (usft)	N/S (usft)	E/W (usft)	V. Sec (usft)	DLeg (°/100usft)	Northing (usft)	Easting (usft)
9,672.0	90.36	269.84	9,263.4	-1.8	-652.8	652.8	1.00	636,390.68	758,987.59
9,700.0	90.36	269.84	9,263.3	-1.9	-680.9	680.9	0.00	636,390.60	758,959.55
9,800.0	90.36	269.84	9,262.6	-2.2	-780.9	780.9	0.00	636,390.33	758,859.55
9,900.0	90.36	269.84	9,262.0	-2.4	-880.8	880.9	0.00	636,390.05	758,759.55
10,000.0	90.36	269.84	9,261.4	-2.7	-980.8	980.8	0.00	636,389.78	758,659.55
10,100.0	90.36	269.84	9,260.8	-3.0	-1,080.8	1,080.8	0.00	636,389.50	758,559.56
10,200.0	90.36	269.84	9,260.1	-3.3	-1,180.8	1,180.8	0.00	636,389.23	758,459.56
10,300.0	90.36	269.84	9,259.5	-3.5	-1,280.8	1,280.8	0.00	636,388.95	758,359.56
10,400.0	90.36	269.84	9,258.9	-3.8	-1,380.8	1,380.8	0.00	636,388.67	758,259.56
10,500.0	90.36	269.84	9,258.3	-4.1	-1,480.8	1,480.8	0.00	636,388.40	758,159.57
10,600.0	90.36	269.84	9,257.6	-4.4	-1,580.8	1,580.8	0.00	636,388.12	758,059.57
10,700.0	90.36	269.84	9,257.0	-4.7	-1,680.8	1,680.8	0.00	636,387.85	757,959.57
10,800.0	90.36	269.84	9,256.4	-4.9	-1,780.8	1,780.8	0.00	636,387.57	757,859.57
10,900.0	90.36	269.84	9,255.8	-5.2	-1,880.8	1,880.8	0.00	636,387.30	757,759.58
11,000.0	90.36	269.84	9,255.1	-5.5	-1,980.8	1,980.8	0.00	636,387.02	757,659.58
11,100.0	90.36	269.84	9,254.5	-5.8	-2,080.8	2,080.8	0.00	636,386.75	757,559.58
11,200.0	90.36	269.84	9,253.9	-6.0	-2,180.8	2,180.8	0.00	636,386.47	757,459.58
11,300.0	90.36	269.84	9,253.3	-6.3	-2,280.8	2,280.8	0.00	636,386.20	757,359.58
11,400.0	90.36	269.84	9,252.7	-6.6	-2,380.8	2,380.8	0.00	636,385.92	757,259.59
11,500.0	90.36	269.84	9,252.0	-6.9	-2,480.8	2,480.8	0.00	636,385.65	757,159.59
11,600.0	90.36	269.84	9,251.4	-7.1	-2,580.8	2,580.8	0.00	636,385.37	757,059.59
11,700.0	90.36	269.84	9,250.8	-7.4	-2,680.8	2,680.8	0.00	636,385.10	756,959.59
11,800.0	90.36	269.84	9,250.2	-7.7	-2,780.8	2,780.8	0.00	636,384.82	756,859.60
11,900.0	90.36	269.84	9,249.5	-8.0	-2,880.8	2,880.8	0.00	636,384.55	756,759.60
12,000.0	90.36	269.84	9,248.9	-8.2	-2,980.8	2,980.8	0.00	636,384.27	756,659.60
12,100.0	90.36	269.84	9,248.3	-8.5	-3,080.8	3,080.8	0.00	636,384.00	756,559.60
12,200.0	90.36	269.84	9,247.7	-8.8	-3,180.8	3,180.8	0.00	636,383.72	756,459.61



**MEC**  
MEC Survey Report



Company: Mack Energy Corp  
 Project: Eddy County  
 Site: Black Jack State Com #1  
 Well: State Com #1  
 Wellbore: #1  
 Design: Plan #1

Local Co-ordinate Reference: Site Black Jack State Com #1  
 TVD Reference: WELL @ 3973.5usft (Original Well Elev)  
 MD Reference: WELL @ 3973.5usft (Original Well Elev)  
 North Reference: Grd  
 Survey Calculation Method: Minimum Curvature  
 Database: EDM 5000 1 Single User Db

**Planned Survey**

MD (usft)	Inc (°)	Azi (azimuth) (°)	TVD (usft)	N/S (usft)	E/W (usft)	V. Sec (usft)	DLeg (°/100usft)	Northing (usft)	Easting (usft)
12,300.0	90.36	269.84	9,247.0	-9.1	-3,280.8	3,280.8	0.00	636,383.45	756,359.61
12,400.0	90.36	269.84	9,246.4	-9.3	-3,380.8	3,380.8	0.00	636,383.17	756,259.61
12,500.0	90.36	269.84	9,245.8	-9.6	-3,480.8	3,480.8	0.00	636,382.90	756,159.61
12,600.0	90.36	269.84	9,245.2	-9.9	-3,580.8	3,580.8	0.00	636,382.62	756,059.61
12,700.0	90.36	269.84	9,244.5	-10.2	-3,680.8	3,680.8	0.00	636,382.35	755,959.62
12,800.0	90.36	269.84	9,243.9	-10.4	-3,780.8	3,780.8	0.00	636,382.07	755,859.62
12,900.0	90.36	269.84	9,243.3	-10.7	-3,880.8	3,880.8	0.00	636,381.80	755,759.62
13,000.0	90.36	269.84	9,242.7	-11.0	-3,980.8	3,980.8	0.00	636,381.52	755,659.62
13,100.0	90.36	269.84	9,242.1	-11.3	-4,080.8	4,080.8	0.00	636,381.25	755,559.63
13,200.0	90.36	269.84	9,241.4	-11.5	-4,180.8	4,180.8	0.00	636,380.97	755,459.63
13,300.0	90.36	269.84	9,240.8	-11.8	-4,280.8	4,280.8	0.00	636,380.70	755,359.63
13,400.0	90.36	269.84	9,240.2	-12.1	-4,380.8	4,380.8	0.00	636,380.42	755,259.63
13,500.0	90.36	269.84	9,239.6	-12.4	-4,480.8	4,480.8	0.00	636,380.15	755,159.64
13,589.2	90.36	269.84	9,239.0	-12.6	-4,570.0	4,570.0	0.00	636,379.90	755,070.40

Checked By: \_\_\_\_\_ Approved By: \_\_\_\_\_ Date: \_\_\_\_\_





SITE DETAILS: Black Jack State Com #1	
Site Centre Northing:	636392.50
Easting:	759640.40
Positional Uncertainty:	0.0
Convergence:	0.46
Local North:	Grid

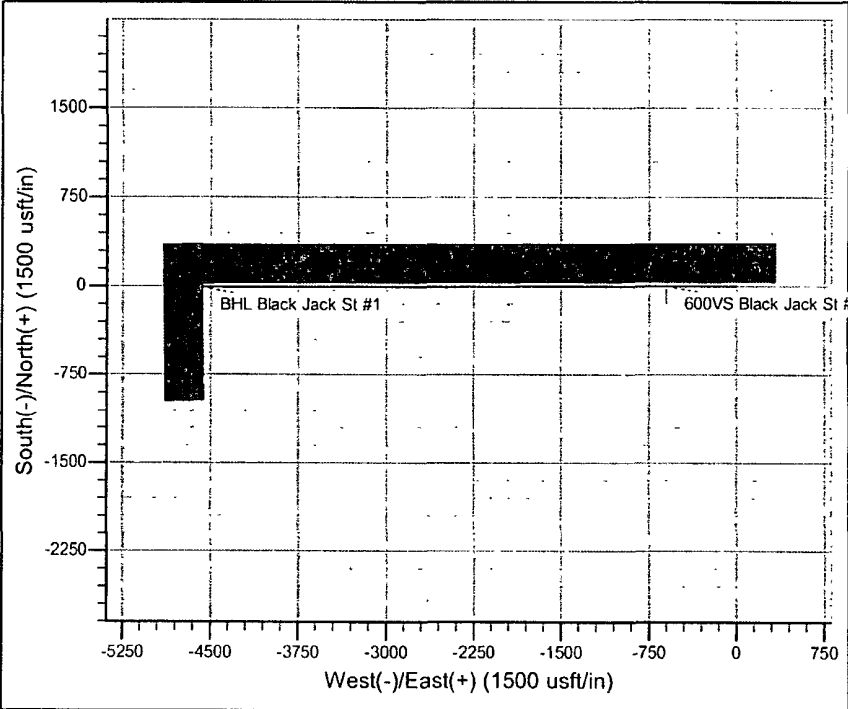
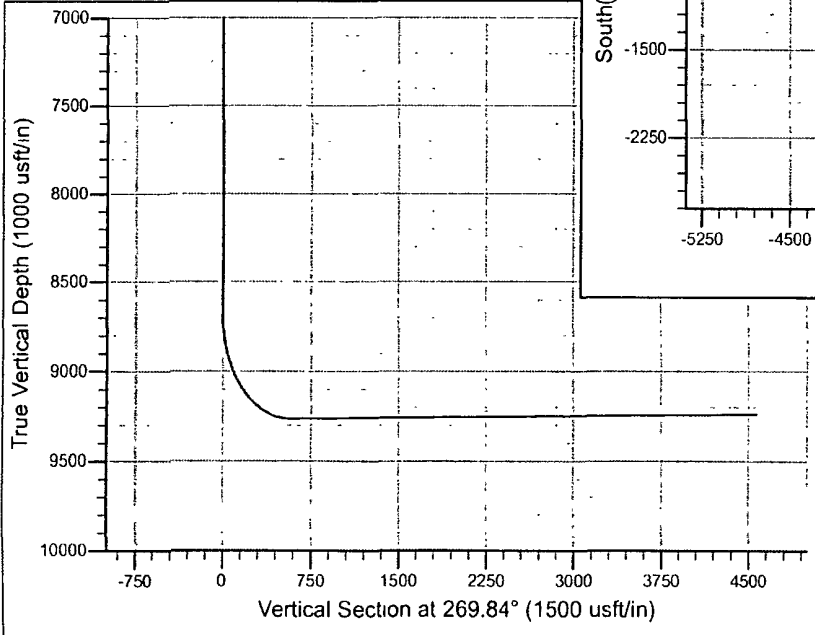
Azimuths to Grid North  
 True North: -0.46°  
 Magnetic North: 7.02°

Magnetic Field  
 Strength: 48890.4snT  
 Dip Angle: 60.69°  
 Date: 4/16/2012  
 Model: IGRF200510

SECTION DETAILS										
Sec	MD	Inc	Azi	TVD	+N/-S	+E/-W	Dleg	TFace	VSect	Target
1	0.0	0.00	0.00	0.0	0.0	0.0	0.00	0.00	0.0	
2	8693.0	0.00	0.00	8693.0	0.0	0.0	0.00	0.00	0.0	
3	9599.3	90.89	269.84	9264.3	-1.6	-580.2	10.03	269.84	580.2	
4	9619.1	90.89	269.84	9264.0	-1.7	-600.0	0.00	0.00	600.0	600VS Black Jack St #1
5	9672.0	90.36	269.84	9263.4	-1.8	-652.8	1.00	179.74	652.8	
6	613589.2	90.36	269.84	9239.0	-12.6	-4570.0	0.00	0.00	4570.0	BHL Black Jack St #1

PROJECT DETAILS: Eddy County	
Geodetic System:	US State Plane 1927 (Ex
Datum:	NAD 1927 (NADCON CO
Ellipsoid:	Clarke 1866
Zone:	New Mexico East 3001
System Datum:	Mean Sea Level

DESIGN TARGET DETAILS									
Name	TVD	+N/-S	+E/-W	Northing	Easting	Latitude	Longitude	Shape	
BHL Black Jack St #1	9239.0	-12.6	-4570.0	636379.90	755070.40	32° 44' 48.32" N	103° 30' 13.427" W	Point	
600VS Black Jack St #1	9264.0	-1.7	-600.0	636390.82	759040.40	32° 44' 48.122" N	103° 29' 26.946" W	Point	



Plan: Plan #1 (State Com #1/#1)	
Created By: MEC	Date: 13:51, April 16 20
Checked: _____	Date: _____
Reviewed: _____	Date: _____
Approved: _____	Date: _____