

HOBBS OCD

DISTRICT I
1825 N. French Dr., Hobbs, NM 88240
Phone (575) 593-8161 Fax: (575) 593-0720

DISTRICT II
811 S. First St., Artesia, NM 88210
Phone (575) 748-1283 Fax: (575) 748-9780

DISTRICT III
1000 Rio Brazos Rd., Aledo, NM 87410
Phone (505) 334-8178 Fax: (505) 334-8178

DISTRICT IV
1220 E. St. Francis Dr., Santa Fe, NM 87508
Phone (505) 476-8400 Fax: (505) 476-8402

APR 16 2012
State of New Mexico
Energy, Minerals and Natural Resources Department

Form C-102
Revised August 1, 2011

Submit one copy to appropriate
District Office

OIL CONSERVATION DIVISION
1220 South St. Francis Dr.
Santa Fe, New Mexico 87505

RECEIVED

WELL LOCATION AND ACREAGE DEDICATION PLAT

AMENDED REPORT

API Number 30-025-40516	Pool Code 22900	Pool Name Eunice; BLI-TU-DR, North
Property Code 22503	Property Name NEDU	Well Number 175
OGRID No. 873	Operator Name APACHE CORPORATION	Elevation 3463'

Surface Location

UL or lot No.	Section	Township	Range	Lot Idn	Feet from the	North/South line	Feet from the	East/West line	County
LOT 11	3	21 S	37 E		3785	NORTH	1980	WEST	LEA

Bottom Hole Location If Different From Surface

UL or lot No.	Section	Township	Range	Lot Idn	Feet from the	North/South line	Feet from the	East/West line	County
Dedicated Acres 40		Joint or Infill	Consolidation Code	Order No.					

NO ALLOWABLE WILL BE ASSIGNED TO THIS COMPLETION UNTIL ALL INTERESTS HAVE BEEN CONSOLIDATED OR A NON-STANDARD UNIT HAS BEEN APPROVED BY THE DIVISION

SURFACE LOCATION
Lat - N 32°30'42.73"
Long - W 103°09'11.03"
NMSPC- N 551963.561
E 905170.903
(NAD-83)

Lat - N 32°30'42.30"
Long - W 103°09'09.33"
NMSPC- N 551903.597
E 863987.142
(NAD-27)

32.51175 N
103.152592 W

LOT 4	LOT 3	LOT 2	LOT 1
LOT 5	LOT 6	LOT 7	LOT 8
LOT 12	LOT 11	LOT 10	LOT 9
LOT 13	LOT 14	LOT 15	LOT 16

3

OPERATOR CERTIFICATION
I hereby certify that the information contained herein is true and complete to the best of my knowledge and belief, and that this organization either owns a working interest or unleased mineral interest in the land including the proposed bottom hole location or has a right to drill this well at this location pursuant to a contract with an owner of such a mineral or working interest, or to a voluntary pooling agreement or a compulsory pooling order heretofore entered by the division.

Susan Blakemore 4/6/2012
Signature Date
Susan Blakemore
Printed Name
susan.blakemore@apachecorp.com
Email Address

SURVEYOR CERTIFICATION
I hereby certify that the well location shown on this plat was plotted from field notes of actual surveys made by me or under my supervision and that the same is true and correct to the best of my belief.

DATE SURVEYED: FEBRUARY 06, 2012
Signature Seal of Professional Surveyor
7977
Certificate No. Gary L. Jones 7977
BASIN SURVEYS 26289

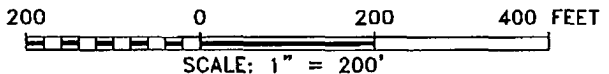
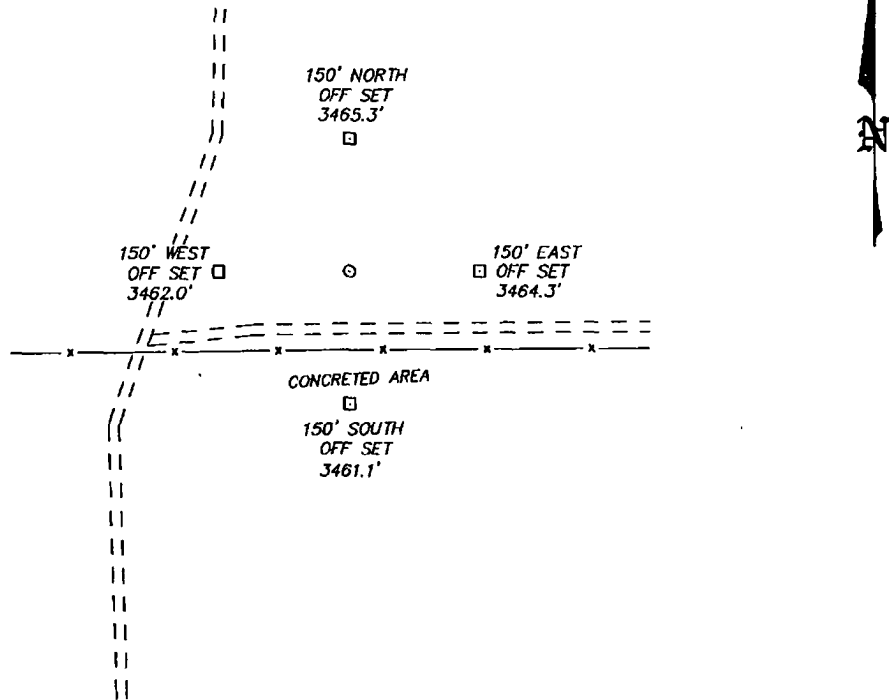
JUN 18 2012

SECTION 3, TOWNSHIP 21 SOUTH, RANGE 37 EAST, N.M.P.M.,
LEA COUNTY, NEW MEXICO.

APACHE CORPORATION
NEDU #175
ELEV. - 3463'

Lat - N 32°30'42.73"
Long - W 103°09'11.03"
NMSPCE - N 551963.561
E 905170.903
(NAD-83)

Lat - N 32°30'42.30"
Long - W 103°09'09.33"
NMSPCE - N 551903.597
E 863987.142
(NAD-27)



Directions to Location:

FROM MILE MARKER 5 OF STATE HWY 207, GO WEST
0.6 MILES TO LEASE ROAD, ON LEASE ROAD GO
NORTH 0.2 MILES TO A "Y", TAKE RIGHT FORK AND
CONTINUE NORTH 0.4 MILES TO PROPOSED LOCATION.

APACHE CORPORATION

REF: NEDU #175 / WELL PAD TOPO

THE NEDU #175 LOCATED 3785'

FROM THE NORTH LINE AND 1980' FROM THE WEST LINE OF
SECTION 3, TOWNSHIP 21 SOUTH, RANGE 37 EAST,

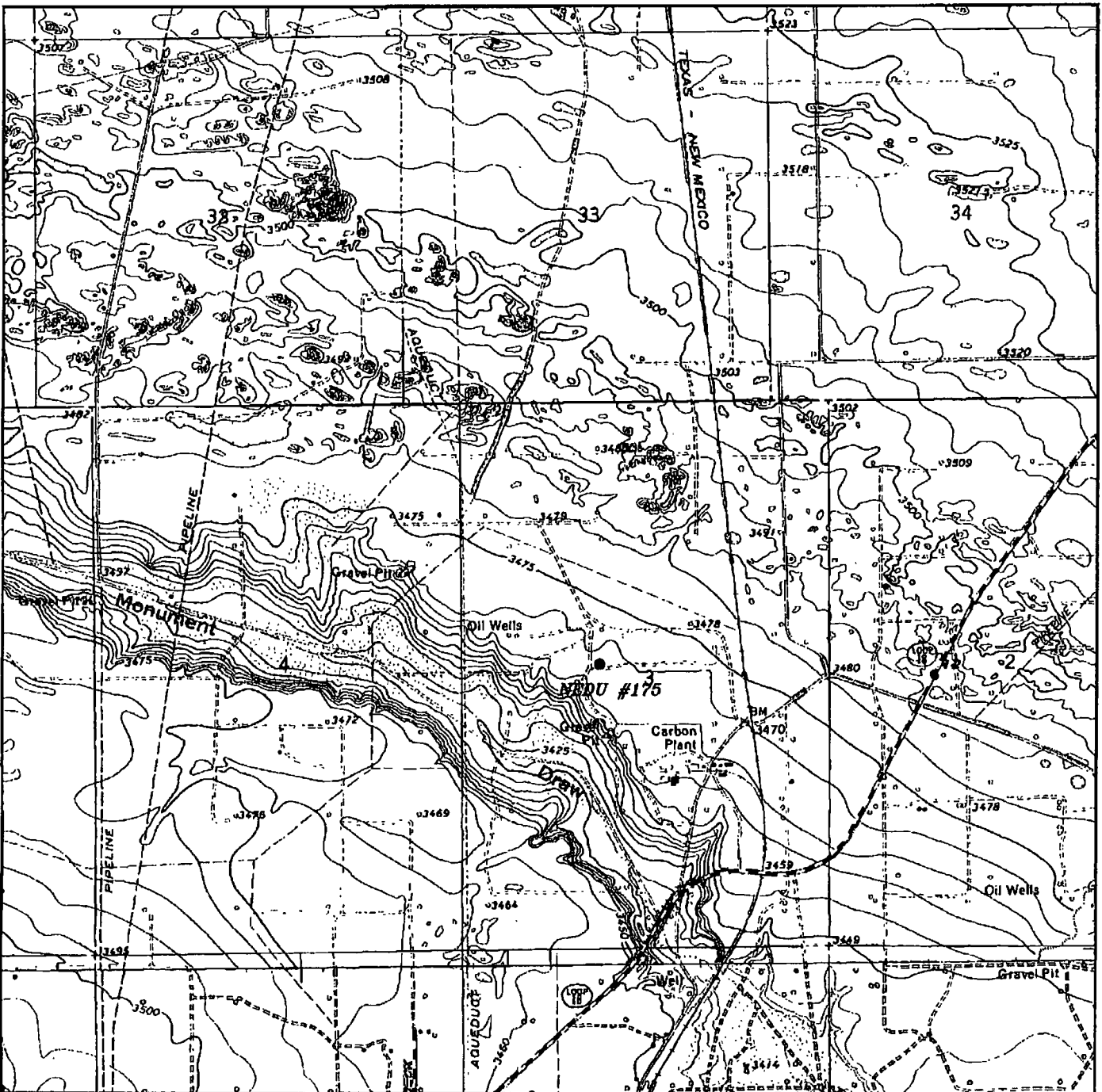
N.M.P.M., LEA COUNTY, NEW MEXICO.

BASIN SURVEYS P.O. BOX 1786-HOBBS, NEW MEXICO

W.O. Number: 26289 Drawn By: J. SMALL

Date: 04-04-2012 Disk: JMS 26289

Survey Date: 02-29-2012 Sheet 1 of 1 Sheets



NEDU #175
 Located 3785' FNL and 1980' FWL
 Section 3, Township 21 South, Range 37 East,
 N.M.P.M., Lea County, New Mexico.

basin
surveys
 focused on excellence
 in the oilfield

P.O. Box 1786
 1120 N. West County Rd.
 Hobbs, New Mexico 88241
 (575) 393-7316 - Office
 (575) 392-2206 - Fax
 basin-surveys.com

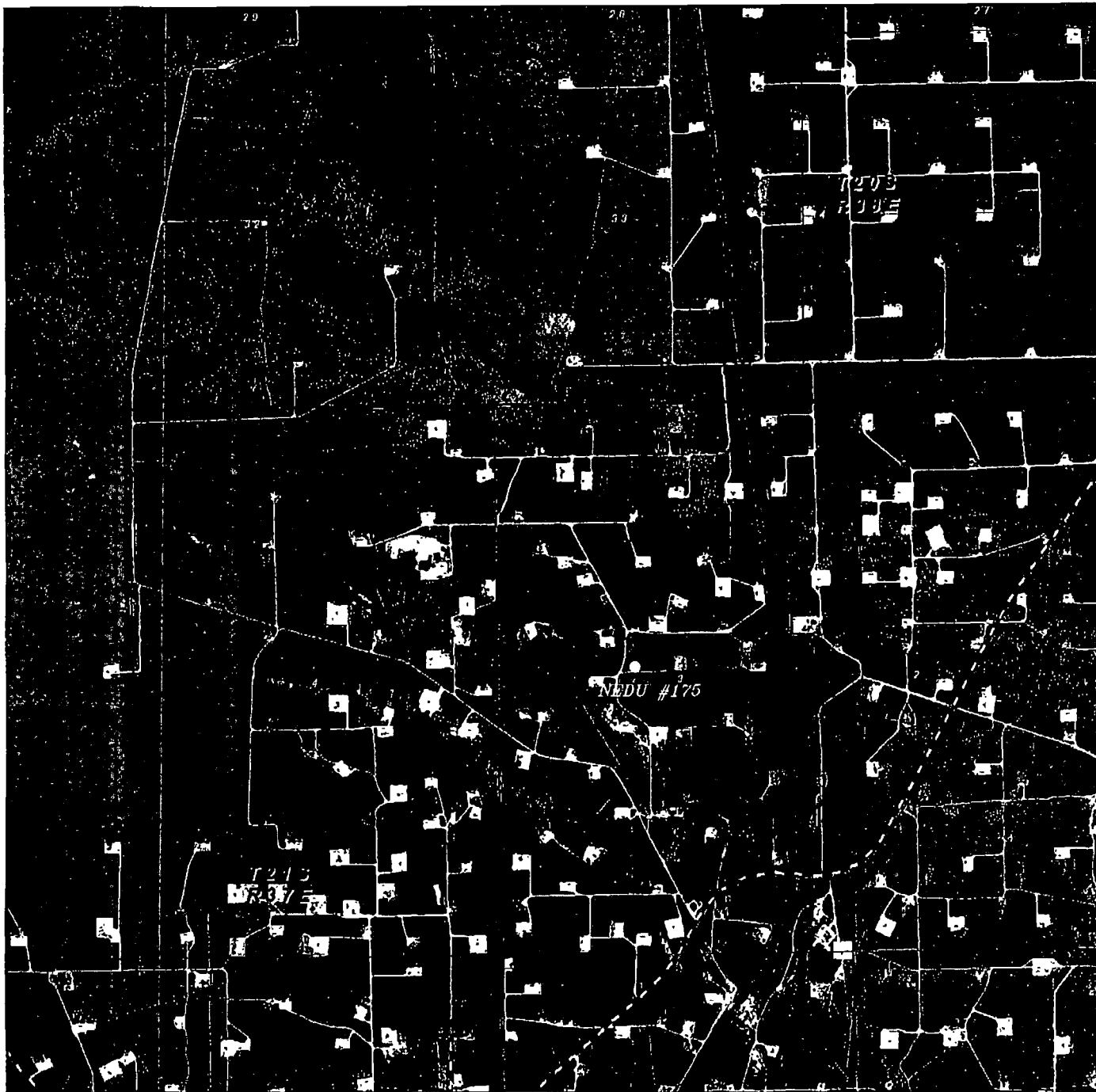
W.O. Number: JMS 26289

Survey Date: 02-29-2012

Scale: 1" = 2000'

Date: 04-04-2012

APACHE
 CORPORATION



NEDU #175

Located 3785' FNL and 1980' FWL
 Section 3, Township 21 South, Range 37 East,
 N.M.P.M., Lea County, New Mexico.



focused on excellence
 in the oilfield

P.O. Box 1788
 1120 N. West County Rd.
 Hobbs, New Mexico 88241
 (575) 393-7316 - Office
 (575) 392-2206 - Fax
 basin-surveys.com

W.O. Number: JMS 26289

Scale: 1" = 2000'

YELLOW TINT - USA LAND
 BLUE TINT - STATE LAND
 NATURAL COLOR - FEE LAND



APACHE
 CORPORATION