

New Mexico Oil Conservation Division, District I

FORM 3160-3
(December 1990)

**1625 N. French Drive
Hobbs, NM 88240**

Form approved.
Budget Bureau No. 1004-0136
Expires December 31, 1991

**UNITED STATES
DEPARTMENT OF THE INTERIOR
BUREAU OF LAND MANAGEMENT**

APPLICATION FOR PERMIT TO DRILL, DEEPEN, OR PLUG BACK

1a. TYPE OF WORK **DRILL** **DEEPEN** **PLUG BACK**

1b. TYPE OF WELL

OIL **WELL** **GAS** **WELL** **OTHER** **SINGLE** **ZONE** **MULTIPLE** **ZONE**

5. LEASE DESIGNATION AND SERIAL NO.
NM 96249

6. IF INDIAN, ALLOTTEE OR TRIBE NAME

7. UNIT AGREEMENT NAME
APF # 30-025-35861

8. FARM OR LEASE NAME
Kukui "31"

2. NAME OF OPERATOR
OCEAN ENERGY INC.

9. WELL NO.
1

3. ADDRESS OF OPERATOR
1001 Fannin, Suite 1600, Houston, TX 77002 (713) 265-6000 X-6834

10. FIELD AND POOL OR WILDCAT
North Morton, Perme Perm,

4. LOCATION OF WELL (Report location clearly and in accordance with any State requirements.*)
At Surface **1290' FNL & 1980' FEL of Sec. 31**
At proposed Prod. Zon **Same** **B**

11. SEC., T., R., M., OR BLK. AND SURVEY OR AREA
B, Sec. 31, T14S, R35E

14. DISTANCE IN MILES AND DIRECTION FROM NEAREST TOWN OR POST OFFICE*
Approximately 7 miles northwest of Lovington, NM

12. COUNTY OR PARISH 13. STATE
Lea County NM

15. DISTANCE FROM PROPOSED* LOCATION TO NEAREST PROPERTY OR LEASE LINE, FT. (Also to nearest drlg. unit line, if any)
1290'

16. NO. OF ACRES IN LEASE
321.01

17. NO. OF ACRES ASSIGNED TO THIS WELL
321.01

18. DISTANCE FROM PROPOSED LOCATION* TO NEAREST WELL, DRILLING, COMPLETED, OR APPLIED FOR ON THIS LEASE, FT.
N/A

19. PROPOSED DEPTH
14,000'

20. ROTARY OR CABLE TOOLS
Rotary

21. ELEVATIONS (Show whether DF, RT, GR, etc.)
GR 4048'

22. APPROX. DATE WORK WILL START*
March 10, 2002

23. PROPOSED CASING AND CEMENTING PROGRAM				
SIZE OF HOLE	SIZE OF CASING	WEIGHT/FOOT	SETTING DEPTH	QUANTITY OF CEMENT
36"	20"	60#	40'	ready-mix to surface
17-1/2"	13-3/8"	48#	450'	400 sx Class C + 2% Cacl2
11"	8-5/8"	32#	6248'	1100 sx POZ Cl C + additives
7-7/8"	5-1/2"	17#	13560'	875 sx Cl C POZ + additives

Ocean proposes to recomplete from the Mesa (Morrow) sand to the Wolfcamp Set CIBP @ 13,170' and dump bail 35' of cement on top. Perforate the Wolfcamp as follows:
Perf 10558-10668' (10' @
Perf 10646-10652' (6' @ 6 SPF)
Perf 10676-10680' (4' @ 6 SPF) @ 10684-10688' (4' @ 6 SPF)
Flow test all zones. Stimulate all the above perfs.
Perf 10520-10534' (14' @ 6 SPF) Stimulate and flow test.
Set production pkr @ 10,430' and put well on production.

Attached are wellbore schematics and detail procedure.
MAY NOT PRODUCE UNTIL HOBBS OCD RECEIVES NSL ORDER AND PLAT.

OPER. OGRID NO. **169355A**
 PROPERTY NO. **29596**
 POOL CODE **47350**
 EFF. DATE **5-1-03**
 API NO. **30-025-35861**

IN ABOVE SPACE DESCRIBE PROPOSED PROGRAM : If proposal is to deepen or plug back, give data on present productive zone and proposed new productive zone. If proposal is to drill or deepen directionally, give pertinent data on subsurface locations and measured and true vertical depths. Give blowout preventer program, if any.

24. SIGNED *Janie McMillin* TITLE Sr. Regulatory Specialist DATE 4/28/2003

(This space for Federal or State office use)

PERMIT NO. _____ APPROVAL DATE _____

Application approval does not warrant or certify that the applicant holds legal or equitable title to those rights in the subject lease which would entitle the applicant to conduct operations thereon.

CONDITIONS OF APPROVAL, IF ANY:

APPROVED BY **(ORIG. SGD) DAVID R. GLASS** TITLE _____ DATE _____

APPROVED

APR 29 2003

DAVID R. GLASS
PETROLEUM ENGINEER

Title 18 U.S.C. Section 1001, makes it a crime for any person knowingly and willfully to make to any department or agency of the United States any false, fictitious or fraudulent statements or representations as to any matter within its jurisdiction.

RECEIVED

2003 APR 29 AM 9:05

BUREAU OF LAND MGMT
ROSWELL OFFICE

30852-32701
24-4
APR 29
11:49
1143 22

B

88-121-032-20821



KUKUI 31-1

NORTH MORTON FIELD


RECOMPLETE FROM MESA (MORROW) TO WOLFCAMP 'E' CARBONATE

CURRENT SAND NAME	MESA (MORROW) SAND
PERFORATIONS	13215' - 13219' RKB MD (4' @ 4 SPF)
	13230' - 13238' RKB MD (8' @ 4 SPF)
	13246' - 13253' RKB MD (7' @ 4 SPF)

PROPOSED SAND NAME	WOLFCAMP 'E' CARBONATE
PERFORATIONS	10520' - 10534' RKB MD (14' @ 6 SPF)
	10558' - 10668' RKB MD (10' @ 6 SPF)
	10646' - 10652' RKB MD (6' @ 6 SPF)
	10676' - 10680' RKB MD (4' @ 6 SPF)
	10684' - 10688' RKB MD (4' @ 6 SPF)

PROCEDURE

1. Test anchors. Evaluate tree assembly.
2. MIRU recompletion rig. ND tree. NU BOPE. Pressure test BOPE to 4500 psig.
3. POOH 2-7/8" production tubing and packer.
4. MIRU electric line. RIH with Gauge Ring/Junk Basket. RIH and set CIBP at 13170' RKB. Dump bail 35' of cement on top of CIBP.
5. RU E-Line. Perforate WOLFCAMP 'E' CARBONATE as follows:
SECTION 2: 10558'-10668' (10' @ 6 SPF)
SECTION 3: 10646'-10652' (6' @ 6 SPF)
SECTION 4: 10676'-10680' (4' @ 6 SPF)
10684'-10688' (4' @ 6 SPF)
RD E-Line.
6. RIH and stimulate Sections 2, 3 and 4 of WOLFCAMP 'E' CARBONATE only. Flow test all zones.
7. POOH with tubing and isolation packer assembly.
8. RU E-Line. Perforate WOLFCAMP 'E' CARBONATE as follows:
SECTION 1: 10520'-10534' (14' @ 6 SPF)
RD E-Line.
9. RIH and stimulate Section 1 of WOLFCAMP 'E' CARBONATE only. Flow test zone.
10. POOH with tubing and isolation packer assembly. RIH with 2-7/8" tubing and production packer. Set production packer at 10430'. ND BOPE. NU tree.
11. RD and release recompletion rig. Turn well over to production operations.
12. Perform a 4-Point Potential well test for the New Mexico Oil Conservation Department.

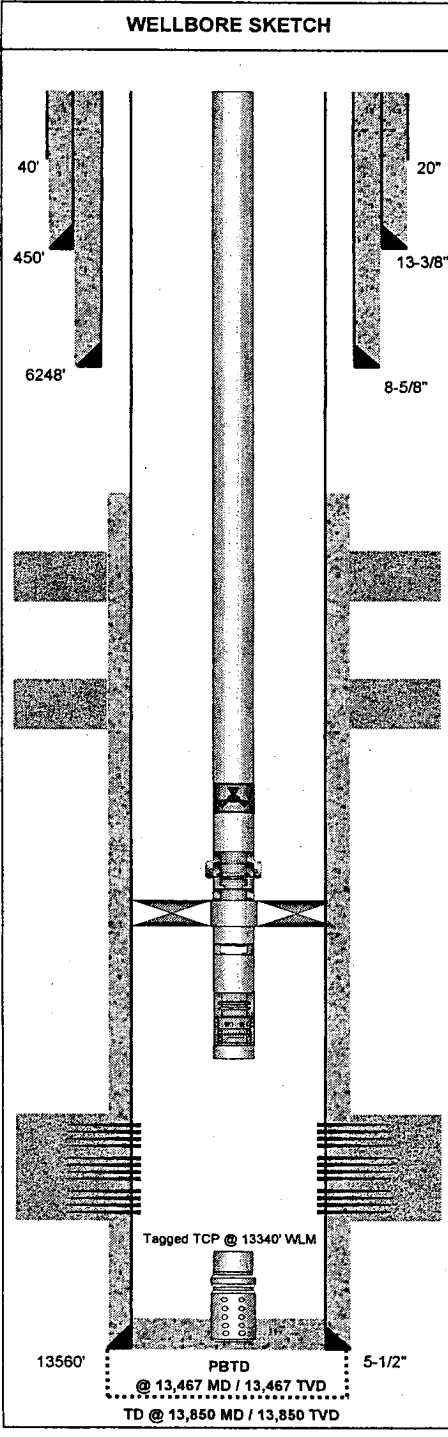
	OPERATOR: OCEAN ENERGY, INC.	LEASE / WELL: KUKUI 31-1	SURVEY LOCATION: Sec. 31 - T14S - R35E	WELL SKETCH: CURRENT COMPLETION
	DRILLING RIG: GREY WOLF 33	COUNTY / STATE: LEA COUNTY, NEW MEXICO	SURFACE LOCATION: 1290' FNL & 1980' FEL	FIELD: NORTH MORTON

DIRECTIONAL DATA			
KOP:	STRAIGHT HOLE		
MAX DEV:	4.25 deg @	10,406'	MD
DEV @ PERFS:	1.75 deg @	13,217'	MD
DEV @ PERFS:	1.75 deg @	13,234'	MD
DEV @ PERFS:	1.75 deg @	13,250'	MD

TUBULAR DATA							
Tubulars	Size	Weight	Grade	Thread	MD	TVD	TOL
DRIVE PIPE							
CONDUCTOR	20.000				40	40	
SURFACE	13.375	48.000	H-40	STC	450	450	
INTERMEDIATE	8.625	32.000	K-55	LTC	6,248	6,248	
PRODUCTION	5.500	17.000	P-110	LTC	13,560	13,560	
PROD TIEBACK							
PROD LINER							
PROD LINER							
TUBING (Short String)							
TUBING (Long String)	2.875	6.500	L-80	EUE 8rd	13146'	13,146'	
TUBING (Long String)							

WELLHEAD DATA	
TYPE	WOOD GROUP
WP	5,000 psi
T R E E	FLANGE: 2-9/16" 5M
	THREAD: 2-7/8" 8rd
TUBING HANGER:	TC-1W7-1/16" x 2-7/8"
BTM FLANGE:	7-1/16"
BPV PROFILE:	2-1/2"
ELEVATIONS:	GROUND ELEVATION
RKB-THF: 4025'	
RKB-ELEV: 25'	4048'

DRILLING / COMPLETION FLUID	
DRILLING FLUID:	9.50 ppg - (Wolfcamp "E")
DRILLING FLUID:	9.20 ppg - (Brunson / Atoka)
DRILLING FLUID:	9.30 ppg - (MESA / Morrow)
COMPLETION FLUID:	ppg -
PACKER FLUID:	8.60 ppg - 2% KCl



EQUIPMENT DESCRIPTION	ID	OD	LENGTH	DEPTH MD
Calculated TOC @ 8000' RKB				
WOLFCAMP "E" SAND (10516' - 10566')				
BRUNSON (ATOKA) SAND (12890' - 12934')				
Marker Sub 6.02' x 2-7/8", L-80, EUE 8rd Pup Joint	2.441	2.875	6.02	13,111
32.56' x 2-7/8", L-80, EUE 8rd Tubing Joint	2.441	2.875	32.56	13,144
Weatherford Type T-2 On-Off Tool w/ 2.313" ID "F" Profile Nipple	2.313	4.500	1.65	13,145
Weatherford 10K Arrowset 1-X Retrievable Production Packer	2.375	4.625	6.23	13,152
10.03' x 2-7/8", L-80, EUE 8rd Tubing Joint	2.441	2.875	10.03	13,162
"F" Nipple w/ 2.25" ID Profile	2.250	2.875	1.10	13,163
10.08' x 2-7/8", L-80, EUE 8rd Tubing Joint	2.441	2.875	10.08	13,173
Maximum Differential Bar Vent	2.441	3.680	1.32	13,174
Mechanical Tubing Release (TCP Gun Released June 10, 2002)	2.250	3.500	1.59	13,176
31' x 2-7/8", L-80, EUE 8rd Tubing Joint	TCP GUN DESCRIPTION			
2-3/8" 8rd BOX x 2-7/8" 8rd BOX X-OVER				
4" x 38' Tubing Conveyed Perforating Gun				
MESA (MORROW) SAND				
Perforations: 13215' - 13219' (4' @ 4 spf)				
13230' - 13238' (8' @ 4 spf)				
13246' - 13253' (7' @ 4 spf)				
OWENS 39 grams RDX, EHD=0.46" Pene=36.10"				
COMMENTS:	API # 30 - 025 - 35861	PLUG BACK DEPTH:	13,467	13,467
Drilled to TD 05/20/02 @ 18:30 hours	13-3/8" cemented with 425 sacks	TOTAL WELL DEPTH:	13,560	13,560
Completed in MESA 06/08/02	8-5/8" cemented with 2775 sacks	PREPARED BY:	ENOS J. FANGUE	DATE:
DRAWING NOT TO SCALE	5-1/2" cemented with 1425 sacks			July 2, 2002

13560' Tagged TCP @ 13340' WLM
 5-1/2" PBTB @ 13,467 MD / 13,467 TVD
 TD @ 13,850 MD / 13,850 TVD

devon	OPERATOR: OCEAN ENERGY, INC.	LEASE / WELL: KUKUI 31-1.	SURVEY LOCATION: Sec. 31 - T14S - R35E	WELL SKETCH: PROPOSED COMPLETION
	DRILLING RIG: GREYWOLF 33	COUNTY / STATE: LEA COUNTY, NEW MEXICO	SURFACE LOCATION: 1290' FNL & 1980' FEL	FIELD: NORTH MORTON
	COMPLETION RIG: LUCKY 77			

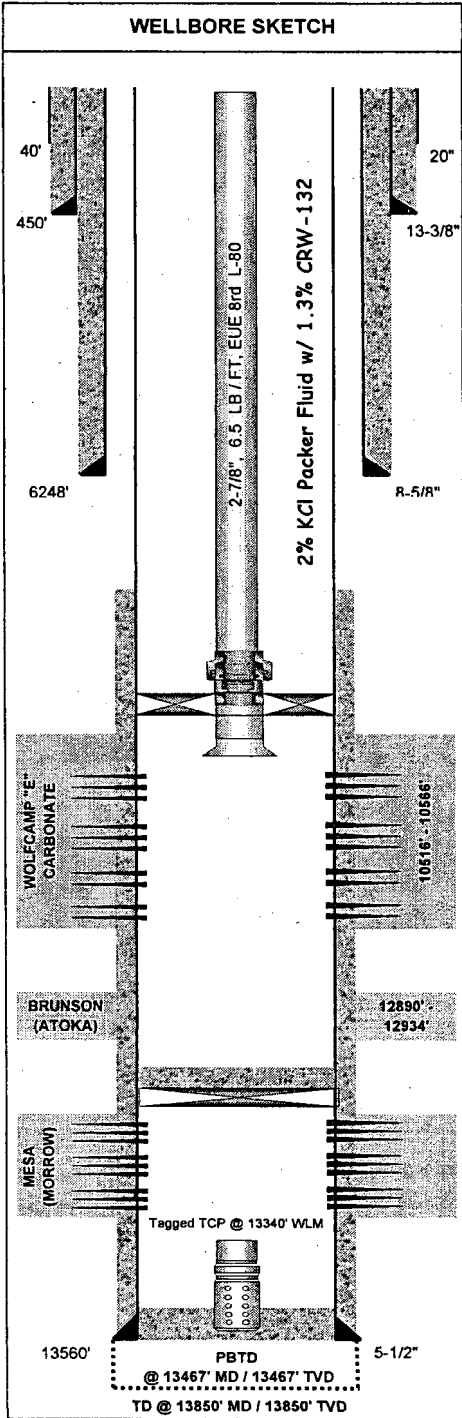
DIRECTIONAL DATA			
KOP:	STRAIGHT HOLE		
MAX DEV:	4.25 deg @	10,406'	MD
DEV @ PERFS:	1.75 deg @	13,217'	MD
DEV @ PERFS:	1.75 deg @	13,234'	MD
DEV @ PERFS:	1.75 deg @	13,250'	MD

DRILLING / COMPLETION FLUID			
DRILLING FLUID:	9.50 ppg - (Wolfcamp 'E')		
DRILLING FLUID:	9.20 ppg - (Brunson / Atoka)		
DRILLING FLUID:	9.30 ppg - (MESA / Morrow)		
COMPLETION FLUID:	ppg -		
PACKER FLUID:	8.60 ppg - 2% KCl		

TUBULAR DATA					
Tubulars	Size	Weight	Grade	Thread	MD / TVD
DRIVE PIPE					
CONDUCTOR	20.000				40
SURFACE	13.375	48.000	H-40	STC	450
INTERMEDIATE	8.625	32.000	K-55	LTC	6,248
PRODUCTION	5.500	17.000	L-80	LTC	SURFACE - 7491'
PRODUCTION	5.500	17.000	P-110	LTC	7491 - 13560
TUBING	2.875	6.500	L-80	EUE 8rd	10,429

CEMENTING DATA: 13-3/8" cemented with 492 sacks. Circulated to Surface. 8-5/8" cemented with 2775 sacks. Circulated to Surface. 5-1/2" cemented with 1425 sacks. Had full returns to surface.

WELLHEAD DATA	
TYPE	WOOD GROUP
WP	5,000 psi
T R E E	FLANGE:
	2-9/16" 5M
C A P	THREAD:
	2-7/8" 8rd LIFT
TUBING HANGER:	TC-1W7-1/16" x 2-7/8"
BTM FLANGE:	7-1/16" 5M
BPV PROFILE:	2-1/2" TYPE H
ELEVATIONS:	GROUND ELEVATION
RKB: 4025'	
RKB-ELEV: 25'	4048'



EQUIPMENT DESCRIPTION				O D	I D	LENGTH	DEPTH MD
RKB ELEVATION							25.00
Wood Group Tubing Hanger Type TC-1W, 7-1/16" x 2-7/8" 8rd Top and Bottom				2.375	1.995	1.00	1.47
1 Tubing Joint: 2-7/8", 6.5 lb/ft L-80 EUE 8rd				2.375	1.995	31.65	2.47
1 Pup Joint: 6' x 2-7/8", 6.5 lb/ft L-80 EUE 8rd				2.375	1.995	12.00	34.12
1 Pup Joint: 8' x 2-7/8", 6.5 lb/ft L-80 EUE 8rd				2.375	1.995	12.00	46.12
329 Tubing Joints: 2-7/8", 6.5 lb/ft L-80 EUE 8rd				2.375	1.995	10,412.85	58.12
ETOC at 7500' based on CBL dated 06/05/02							
Weatherford Type T-2 On-Off Tool w/ "F" Profile Nipple				2.375	1.875	1.50	10,470.97
Weatherford Arrowset 1-X Retrievable Production Packer				3.340	1.995	6.50	10,472.47
2-7/8", 6.5 lb/ft, L-80 EUE 8rd Pup Joint				2.375	1.995	10.03	10,478.97
Wireline Reentry Guide				2.375	1.995	1.00	10,489.00
Bottom of Assembly							10,490.00
WOLFCAMP 'E' CARBONATE							
Perforations: 10520' - 10534' (14' @ 6 spf)							
10558' - 10668' (10' @ 6 spf)							
10646' - 10652' (6' @ 6 spf)							
10676' - 10680' (4' @ 6 spf)							
10684' - 10688' (4' @ 6 spf)							
TITAN 22.7 gram charge loaded at 6 SPF, 60 degree phasing							
Charge Performance: EHD=0.43" and Penetration=37.00"							
35' Cement Plug ETOC = 13135' RKB							
5.5" OWEN CIBP set February 00, 2003				5.500	-	2.00	13,170.00
MESA (MORROW) SAND							
13215' - 13219' (4' @ 4 spf)							
13230' - 13238' (8' @ 4 spf)							
13246' - 13253' (7' @ 4 spf)							
OWENS 39 grams RDX, EHD=0.46" Penetration=36.10"							
31' x 2-7/8", L-80, EUE 8rd Tubing Joint							
2-3/8" 8rd BOX x 2-7/8" 8rd BOX X-OVER							
4" x 38' Tubing Conveyed Perforating Gun							
TCP GUN DESCRIPTION							
COMMENTS:	Drilled to TD 05/20/02	API # 30-025-35861	PLUG BACK DEPTH:	13,467.00			
	Completed 06/08/02		TOTAL WELL DEPTH:	13,560.00			
			PREPARED BY:	ENOS J. FANGUE			
			DATE:	April 25, 2003			
DRAWING NOT TO SCALE							

DISTRICT I
1825 N. French Dr., Hobbs, NM 88240

DISTRICT II
811 South First, Artesia, NM 88210

DISTRICT III
1000 Rio Brazos Rd., Aztec, NM 87410

DISTRICT IV
2040 South Pacheco, Santa Fe, NM 87505

State of New Mexico
Energy, Minerals and Natural Resources Department

Form C-102
Revised March 17, 1999

Submit to Appropriate District Office
State Lease - 4 Copies
Fee Lease - 3 Copies

OIL CONSERVATION DIVISION

2040 South Pacheco
Santa Fe, New Mexico 87504-2088

AMENDED REPORT

WELL LOCATION AND ACREAGE DEDICATION PLAT

API Number 30-025-35861	Pool Code 47350	Well Name Morton, Permo Perm North WOLF CAMP
Property Code 29596	Property Name KUKUI "31"	Well Number 1
OGRID No. 169355	Operator Name OCEAN ENERGY, INC.	Elevation 4048'

Surface Location

UL or lot No.	Section	Township	Range	Lot Idn	Feet from the	North/South line	Feet from the	East/West line	County
B	31	14 S	35 E		1290	NORTH	1980	EAST	LEA

Bottom Hole Location If Different From Surface

UL or lot No.	Section	Township	Range	Lot Idn	Feet from the	North/South line	Feet from the	East/West line	County

Dedicated Acres 40	Joint or Infill	Consolidation Code	Order No. NSL-4884
------------------------------	-----------------	--------------------	------------------------------

NO ALLOWABLE WILL BE ASSIGNED TO THIS COMPLETION UNTIL ALL INTERESTS HAVE BEEN CONSOLIDATED OR A NON-STANDARD UNIT HAS BEEN APPROVED BY THE DIVISION

	<p>OPERATOR CERTIFICATION</p> <p>I hereby certify the the information contained herein is true and complete to the best of my knowledge and belief.</p> <p><i>Jeanie McMillan</i> Signature</p> <p>Jeanie McMillan Printed Name</p> <p>REGULATORY Title</p> <p>5-12-03 Date</p>
	<p>SURVEYOR CERTIFICATION</p> <p>I hereby certify that the well location shown on this plat was plotted from field notes of actual surveys made by me or under my supervision and that the same is true and correct to the best of my belief.</p> <p>January 30, 2002 Date Surveyed</p> <p>Signature & Seal of Professional Surveyor GARY L. JONES NEW MEXICO W.O. No. 22789 Certificate No. Gary L. Jones 7977</p>

