

HOBBS OGD

NOV 14 2012

RECEIVED

District I
1625 N. French Dr., Hobbs, NM 88240
Phone: (575) 393-6161 Fax: (575) 393-0720
District II
811 S. First St., Artesia, NM 88210
Phone: (575) 748-1283 Fax: (575) 748-9720
District III
1000 Rio Brazos Road, Aztec, NM 87410
Phone: (505) 334-6173 Fax: (505) 334-6170
District IV
1220 S. St. Francis Dr., Santa Fe, NM 87505
Phone: (505) 476-3460 Fax: (505) 476-3462

State of New Mexico
Energy, Minerals & Natural Resources Department
OIL CONSERVATION DIVISION
1220 South St. Francis Dr.
Santa Fe, NM 87505

Form C-102
Revised August 1, 2011
Submit one copy to appropriate
District Office

☐ AMENDED REPORT

WELL LOCATION AND ACREAGE DEDICATION PLAT

¹ API Number	² Pool Code	³ Pool Name <u>2nd Bone Spring</u> Reeves
⁴ Property Code	⁵ Property Name IRONHOUSE "20" STATE	
⁷ OGRID No. 6137	⁸ Operator Name DEVON ENERGY PRODUCTION COMPANY, L.P.	⁶ Well Number 1H ⁹ Elevation 3932.7

¹⁰ Surface Location

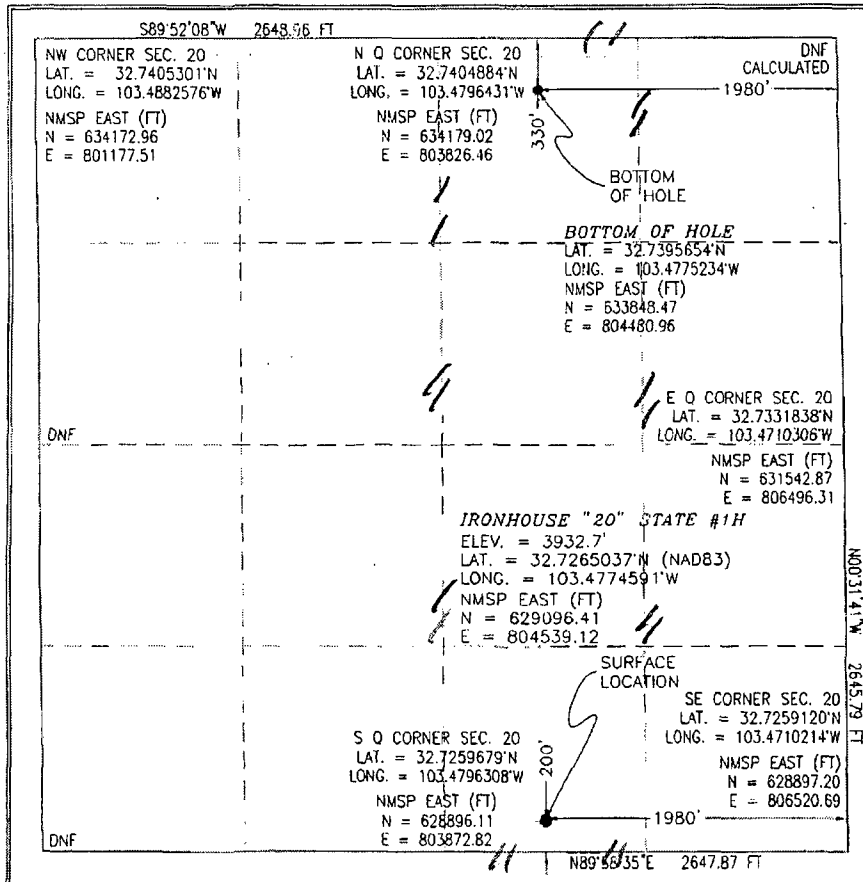
UL or lot no.	Section	Township	Range	Lot Idn	Feet from the	North/South line	Feet from the	East/West line	County
O	20	18 S	35 E		200	SOUTH	1980	EAST	LEA

¹¹ Bottom Hole Location If Different From Surface

UL or lot no.	Section	Township	Range	Lot Idn	Feet from the	North/South line	Feet from the	East/West line	County
B	20	18 S	35 E		330	NORTH	1980	EAST	LEA

¹² Dedicated Acres 160	¹³ Joint or Infill	¹⁴ Consolidation Code	¹⁵ Order No.
--------------------------------------	-------------------------------	----------------------------------	-------------------------

No allowable will be assigned to this completion until all interests have been consolidated or a non-standard unit has been approved by the division.



¹⁶ OPERATOR CERTIFICATION

I hereby certify that the information contained herein is true and complete to the best of my knowledge and belief, and that this organization either owns a working interest or unleased mineral interest in the land including the proposed bottom hole location or has a right to drill this well at this location pursuant to a contract with an owner of such a mineral or working interest, or to a voluntary pooling agreement or a compulsory pooling order heretofore entered by the division.

[Signature] 11/14/12
Signature Date

David Cook, Regulatory Specialist

Printed Name

David.Cook@dvn.com

E-mail Address

¹⁷ SURVEYOR CERTIFICATION

I hereby certify that the well location shown on this plat was plotted from field notes of actual surveys made by me or under my supervision, and that the same is true and correct to the best of my belief.

OCTOBER 27, 2012

Date of Survey

[Signature]
Signature and Seal of Professional Surveyor

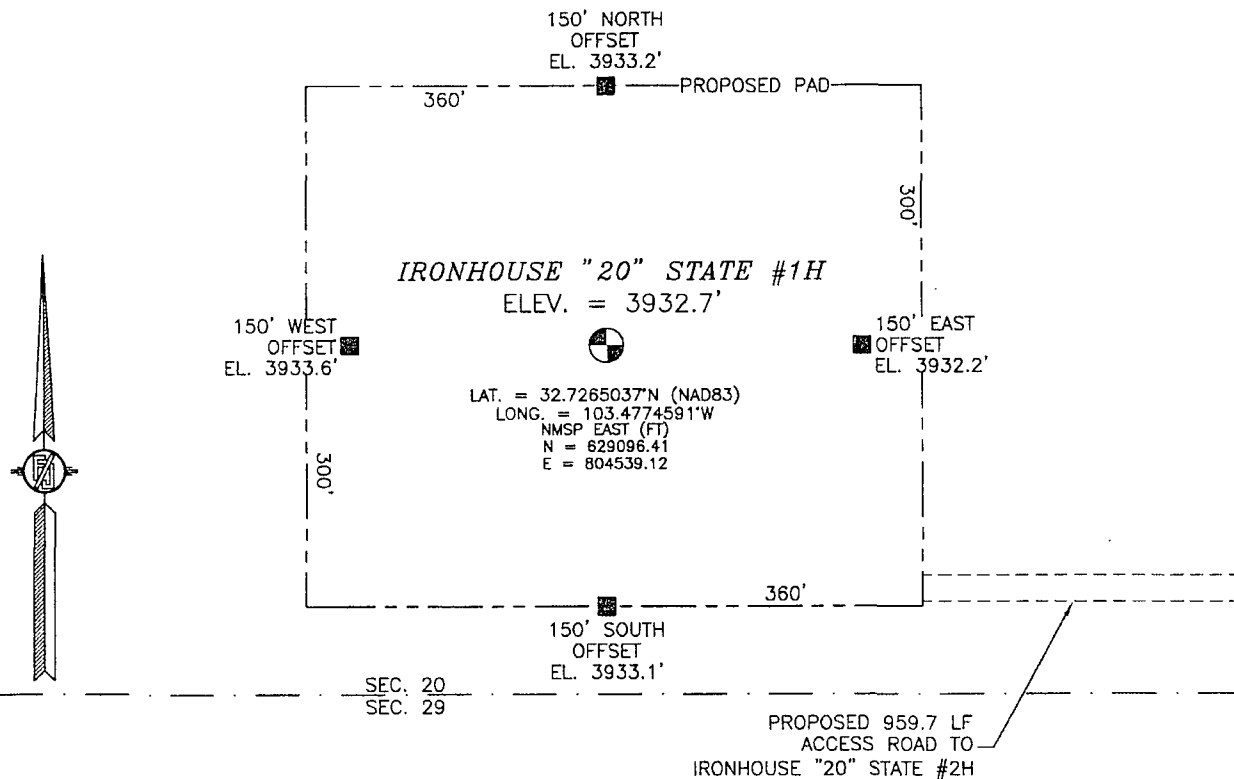
Certificate Number: F111001 F. JARAMILLO, PLS 12797

SURVEY NO. 1337

* Amended ECG 11-20-2012

NOV 29 2012

SECTION 20, TOWNSHIP 18 SOUTH, RANGE 35 EAST, N.M.P.M.
LEA COUNTY, STATE OF NEW MEXICO



010 50 100 200

SCALE 1" = 100'

DIRECTIONS TO LOCATION

FROM INTERSECTION OF STATE HIGHWAY 529 AND STATE HIGHWAY 238, GO NORTH ON STATE HIGHWAY 238 APPROX. 3.9 MILES TO A LEASE ROAD ON WEST SIDE (LEFT) OF STATE HIGHWAY 238, TURN LEFT (WEST) AT CATTLE GUARD, GO APPROX. 0.4 MILES, PASS BY A CALICHE PIT ON NORTH SIDE (RIGHT) OF LEASE ROAD TO AN EXISTING LEASE ROAD ON THE SOUTH SIDE (LEFT). TURN LEFT (SOUTH) TO AN EXISTING DRY HOLE PAD TO A LATH AT THE SOUTHEAST CORNER PAD, RED AND WHITE RIBBON MARKS BEGINNING OF ROAD TO DEVON IRONHOUSE STATE #2H FROM IRONHOUSE STATE #2H AT SOUTHWEST CORNER OF PAD, PROPOSED ROAD CONTINUES WEST TO IRONHOUSE "20" STATE #1H.

DEVON ENERGY PRODUCTION COMPANY, L.P.

IRONHOUSE "20" STATE #1H

LOCATED 200 FT. FROM THE SOUTH LINE
AND 1980 FT. FROM THE EAST LINE OF
SECTION 20, TOWNSHIP 18 SOUTH,
RANGE 35 EAST, N.M.P.M.
LEA COUNTY, STATE OF NEW MEXICO

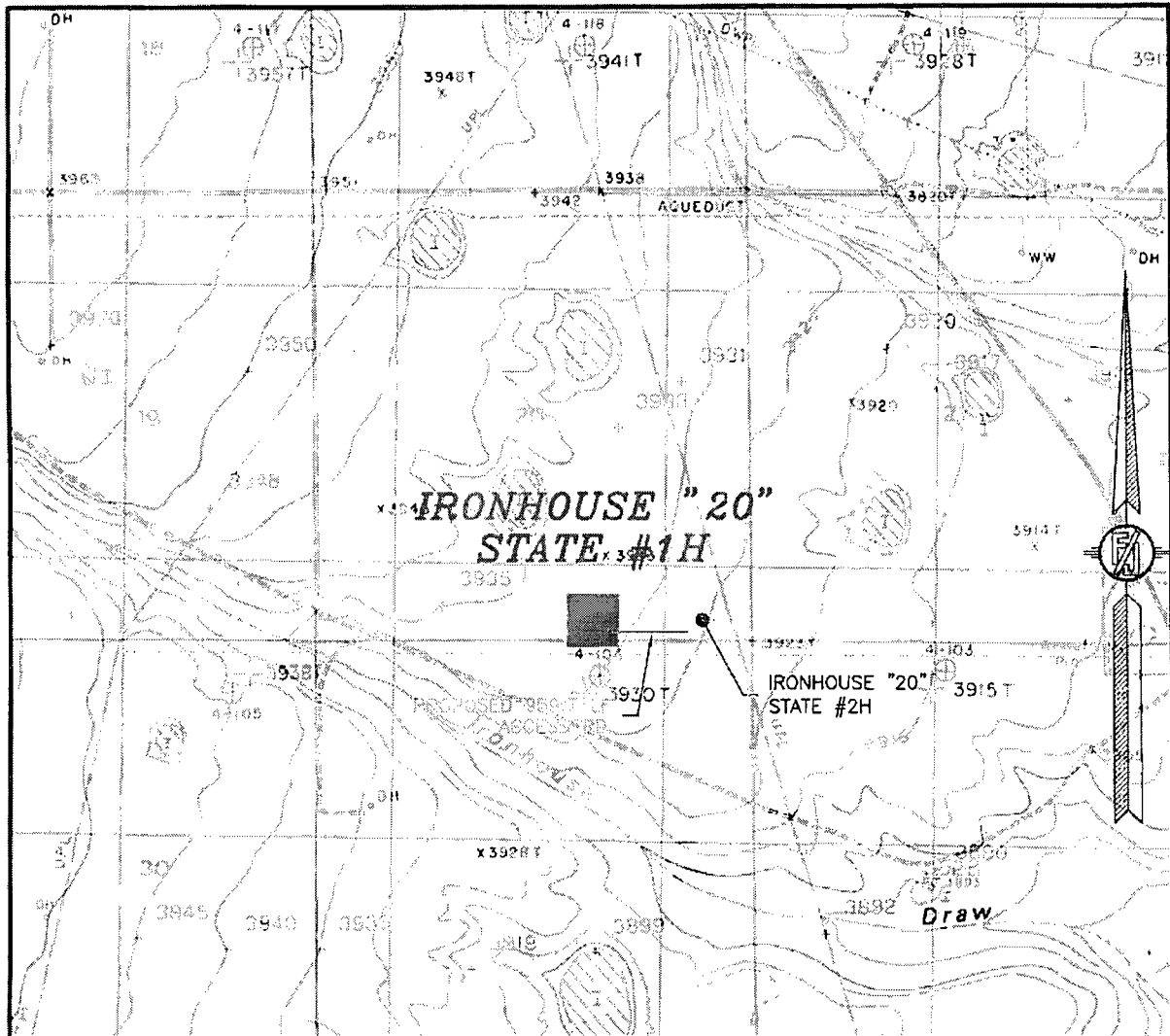
OCTOBER 27, 2012

SURVEY NO. 1337

MADRON SURVEYING, INC. 301 SOUTH CANAL
(575) 234-3341

CARLSBAD, NEW MEXICO

SECTION 20, TOWNSHIP 18 SOUTH, RANGE 35 EAST, N.M.P.M.
LEA COUNTY, STATE OF NEW MEXICO
LOCATION VERIFICATION MAP



USGS QUAD MAP:
IRONHOUSE DRAW

NOT TO SCALE

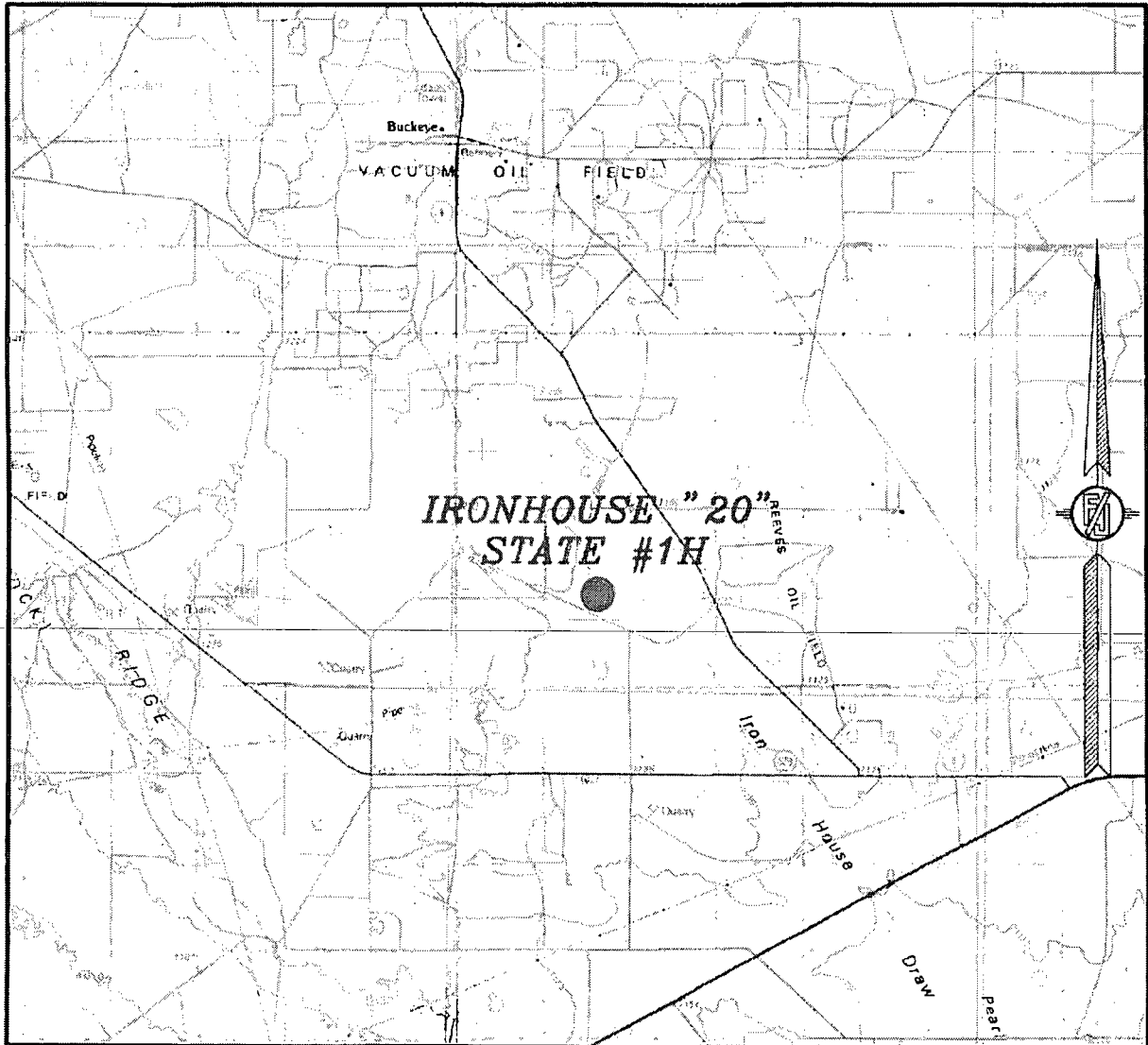
DEVON ENERGY PRODUCTION COMPANY, L.P.
IRONHOUSE "20" STATE #1H
LOCATED 200 FT. FROM THE SOUTH LINE
AND 1980 FT. FROM THE EAST LINE OF
SECTION 20, TOWNSHIP 18 SOUTH,
RANGE 35 EAST, N.M.P.M.
LEA COUNTY, STATE OF NEW MEXICO

OCTOBER 27, 2012

SURVEY NO. 1337

MADRON SURVEYING, INC. 301 SOUTH CANAL CARLSBAD, NEW MEXICO
(575) 234-3341

SECTION 20, TOWNSHIP 18 SOUTH, RANGE 35 EAST, N.M.P.M.
LEA COUNTY, STATE OF NEW MEXICO
VICINITY MAP



NOT TO SCALE

DEVON ENERGY PRODUCTION COMPANY, L.P.

IRONHOUSE "20" STATE #1H

LOCATED 200 FT. FROM THE SOUTH LINE
AND 1980 FT. FROM THE EAST LINE OF
SECTION 20, TOWNSHIP 18 SOUTH,
RANGE 35 EAST, N.M.P.M.
LEA COUNTY, STATE OF NEW MEXICO

OCTOBER 27, 2012

MADRON SURVEYING, INC. 301 SOUTH CANAL CARLSBAD, NEW MEXICO

SURVEY NO. 1337

SECTION 20, TOWNSHIP 18 SOUTH, RANGE 35 EAST, N.M.P.M.
LEA COUNTY, STATE OF NEW MEXICO
AERIAL PHOTO

