

HOBBS OCD

DISTRICT I
1825 N. French Dr., Hobbs, NM 88240
Phone (505) 393-8161 Fax: (505) 393-8720

NOV 20 2012

State of New Mexico
Energy, Minerals and Natural Resources Department

Form C-102
Revised August 1, 2011

DISTRICT II
811 S. First St., Artesia, NM 88210
Phone (505) 748-1283 Fax: (505) 748-9720

DISTRICT III
1000 Rio Brazos Rd., Aztec, NM 87410
Phone (505) 334-8178 Fax: (505) 334-8179

DISTRICT IV
1220 S. St. Francis Dr., Santa Fe, NM 87505
Phone (505) 476-3400 Fax: (505) 476-3402

RECEIVED IL CONSERVATION DIVISION
1220 South St. Francis Dr.
Santa Fe, New Mexico 87505

Submit one copy to appropriate
District Office

WELL LOCATION AND ACREAGE DEDICATION PLAT

X AMENDED REPORT

API Number 30-025-40789	Pool Code 22900	Pool Name Eunice; Bli-Jubb-Dr, North
Property Code 22503	Property Name NORTHEAST DRINKARD UNIT	Well Number 428
OGRID No. 873	Operator Name APACHE CORPORATION	Elevation 3457'

Surface Location

UL or lot No.	Section	Township	Range	Lot Idn	Feet from the	North/South line	Feet from the	East/West line	County
K	10	21 S	37 E		2245	SOUTH	1815	WEST	LEA

Bottom Hole Location If Different From Surface

UL or lot No.	Section	Township	Range	Lot Idn	Feet from the	North/South line	Feet from the	East/West line	County
Dedicated Acres 40		Joint or Infill	Consolidation Code	Order No.					

NO ALLOWABLE WILL BE ASSIGNED TO THIS COMPLETION UNTIL ALL INTERESTS HAVE BEEN CONSOLIDATED
OR A NON-STANDARD UNIT HAS BEEN APPROVED BY THE DIVISION

<p>SURFACE LOCATION Lat - N 32°29'32.50" Long - W 103°09'12.90" NMSPC- N 544863.567 E 905088.735 (NAD-83)</p> <p>Lat - N 32°29'32.07" Long - W 103°09'11.21" NMSPC- N 544803.623 E 863904.667 (NAD-27)</p>	<p>OPERATOR CERTIFICATION I hereby certify that the information contained herein is true and complete to the best of my knowledge and belief, and that this organization either owns a working interest or unleased mineral interest in the land including the proposed bottom hole location or has a right to drill this well at this location pursuant to a contract with an owner of such a mineral or working interest, or to a voluntary pooling agreement or a compulsory pooling order heretofore entered by the division.</p> <p><i>Vicki Brown</i> 11/19/12 Signature Date Vicki Brown Printed Name vicki.brown@apachecorp.com Email Address</p> <p>SURVEYOR CERTIFICATION I hereby certify that the well location shown on this plat was plotted from field notes of actual surveys made by me or under my supervision and that the same is true and correct to the best of my belief.</p> <p>GARY L. JONES 11/19/12 Date Surveyed Signature & Seal of Professional Surveyor Certificate No. Gary L. Jones 7977 BASIN SURVEYS 27640</p>
---	--

* Amended ELG 11-20-2012

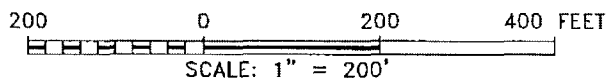
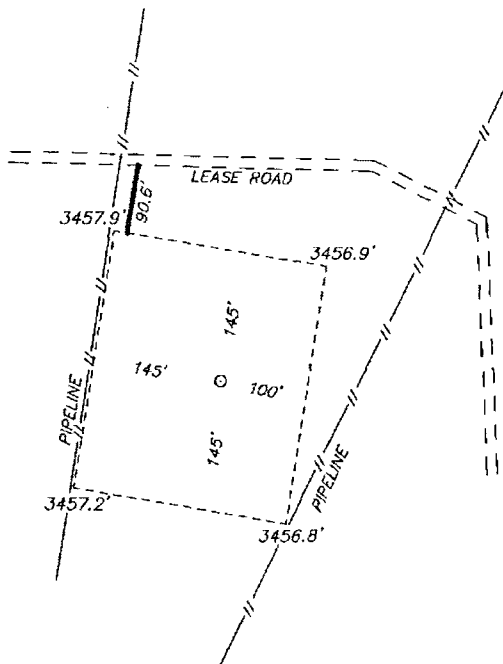
NOV 29 2012

SECTION 10, TOWNSHIP 21 SOUTH, RANGE 37 EAST, N.M.P.M.,
LEA COUNTY, NEW MEXICO.

APACHE CORPORATION
NORTHEAST DRINKARD UNIT #428
ELEV. - 3457'

Lat - N 32°29'32.50"
Long - W 103°09'12.90"
NMSPC - N 544863.567
E 905088.735
(NAD-83)

Lat - N 32°29'32.07"
Long - W 103°09'11.21"
NMSPC - N 544803.623
E 863904.667
(NAD-27)



Directions to Location:

FROM MILE MARKER 2, GO NORTH 1.1 MILES TO
LEASE ROAD, GO EAST 0.4 MILES TURNING NORTH
THEN WEST 0.4 MILES TO PROPOSED LEASE ROAD.

APACHE CORPORATION

REF: NORTHEAST DRINKARD UNIT #428 / WELL PAD TOPO

THE NORTHEAST DRINKARD UNIT #428 LOCATED 2245'

FROM THE SOUTH LINE AND 1815' FROM THE WEST LINE OF

SECTION 10, TOWNSHIP 21 SOUTH, RANGE 37 EAST,

N.M.P.M., LEA COUNTY, NEW MEXICO.

BASIN SURVEYS P.O. BOX 1786-HOBBS, NEW MEXICO

W.O. Number: 27640 Drawn By: J. SMALL

Date: 11-07-2012 Disk: JMS 27640

Survey Date: 11-05-2012

Sheet 1 of 1 Sheets