

DISTRICT I
1625 N. French Dr., Hobbs, NM 88240
Phone (575) 393-6161 Fax: (575) 393-0720

DISTRICT II
811 S. First St., Artesia, NM 88210
Phone (575) 748-1283 Fax: (575) 748-9720

DISTRICT III
1000 Rio Brazos Rd., Aztec, NM 87410
Phone (505) 334-6178 Fax: (505) 334-6170

DISTRICT IV
1220 S. St. Francis Dr., Santa Fe, NM 87505
Phone (505) 476-3460 Fax: (505) 476-3462

State of New Mexico
Energy, Minerals and Natural Resources Department

OIL CONSERVATION DIVISION
1220 South St. Francis Dr.
Santa Fe, New Mexico 87505

Form C-102
Revised August 1, 2011
HOBBS OGD
Submit one copy to appropriate
District Office

NOV 16 2012

WELL LOCATION AND ACREAGE DEDICATION PLAT

RECEIVED AMENDED REPORT

API Number 30-025-40516	Pool Code 22900	Pool Name EUNICE; B-T-D, NORTH
Property Code 22503	Property Name NEDU	Well Number 175
OGRID No. 873	Operator Name APACHE CORPORATION	Elevation 3463'

Surface Location

UL or lot No.	Section	Township	Range	Lot Idn	Feet from the	North/South line	Feet from the	East/West line	County
C/LOT 11	3	21 S	37 E	11	3785	NORTH	1980	WEST	LEA

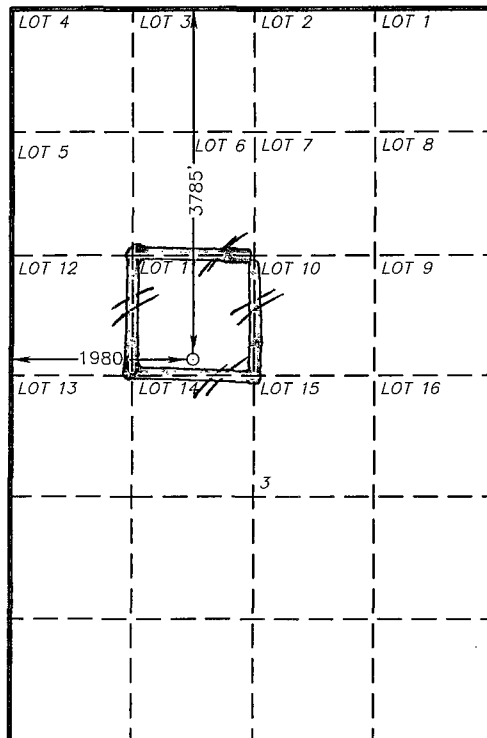
Bottom Hole Location If Different From Surface

UL or lot No.	Section	Township	Range	Lot Idn	Feet from the	North/South line	Feet from the	East/West line	County
Dedicated Acres 40	Joint or Infill	Consolidation Code	Order No.						

NO ALLOWABLE WILL BE ASSIGNED TO THIS COMPLETION UNTIL ALL INTERESTS HAVE BEEN CONSOLIDATED
OR A NON-STANDARD UNIT HAS BEEN APPROVED BY THE DIVISION

SURFACE LOCATION
Lat - N 32°30'42.73"
Long - W 103°09'11.03"
NMSPCE- N 551963.561
E 905170.903
(NAD-83)

Lat - N 32°30'42.30"
Long - W 103°09'09.33"
NMSPCE- N 551903.597
E 863987.142
(NAD-27)



OPERATOR CERTIFICATION

I hereby certify that the information contained herein is true and complete to the best of my knowledge and belief, and that this organization either owns a working interest or unleased mineral interest in the land including the proposed bottom hole location or has a right to drill this well at this location pursuant to a contract with an owner of such a mineral or working interest, or to a voluntary pooling agreement or a compulsory pooling order heretofore entered by the division.

Reesa Holland 11/13/12
Signature Date

REESA HOLLAND
Printed Name

Reesa.Holland@apachecorp.com
Email Address

SURVEYOR CERTIFICATION

I hereby certify that the well location shown on this plat was plotted from field notes of actual surveys made by me or under my supervision, and that the same is true and correct to the best of my belief.

FEBRUARY 2012
Date Surveyed
NEW MEXICO
Professional Surveyor
7977
Seal of Professional Surveyor
26289

Certificate No. Gary L. Jones 7977

26289
BASIN SURVEYS

ELG 11-27-2012

NOV 29 2012