

Office

Energy, Minerals and Natural Resources

October 13, 2009

District I - (575) 393-6161

1625 N. French Dr., Hobbs, NM 88240

District II - (575) 748-1283

811 S. First St., Artesia, NM 88210

District III - (505) 334-6178

1000 Rio Brazos Rd., Aztec, NM 87410

District IV - (505) 476-3460

1220 S. St. Francis Dr., Santa Fe, NM

87505

RECEIVED

NOV 28 2012

HOBBSOCD

OIL CONSERVATION DIVISION

1220 South St. Francis Dr.

Santa Fe, NM 87505

WELL API NO.

30-025-01445

5. Indicate Type of Lease

STATE ☒ FEE ☐

6. State Oil & Gas Lease No.

7. Lease Name or Unit Agreement Name

CAPROCK MALJAMAR UNIT

8. Well Number: 011

9. OGRID Number 269324

10. Pool name or Wildcat
MALJAMAR;GRAYBURG-SAN
ANDRES

SUNDRY NOTICES AND REPORTS ON WELLS

(DO NOT USE THIS FORM FOR PROPOSALS TO DRILL OR TO DEEPEN OR PLUG BACK TO A DIFFERENT RESERVOIR. USE "APPLICATION FOR PERMIT" (FORM C-101) FOR SUCH PROPOSALS.)

1. Type of Well: Oil Well ☐ Gas Well ☒ Other

2. Name of Operator

LINN OPERATING, INC. ON BEHALF OF SANDRIDGE UNTIL COO

3. Address of Operator

600 TRAVIS, SUITE 5100, HOUSTON, TEXAS 77002

4. Well Location

Unit Letter G; 1980 feet from the N line and 1980 feet from the E lineSection 17 Township 17S Range 33E NMPM LEA County

11. Elevation (Show whether DR, RKB, RT, GR, etc.)

4110'

12. Check Appropriate Box to Indicate Nature of Notice, Report or Other Data

NOTICE OF INTENTION TO:

PERFORM REMEDIAL WORK ☒ PLUG AND ABANDON ☐TEMPORARILY ABANDON ☐ CHANGE PLANS ☐PULL OR ALTER CASING ☒ MULTIPLE COMPL ☐DOWNHOLE COMMINGLE ☐OTHER: FAILED MIT (7-11-12) ☐

SUBSEQUENT REPORT OF:

REMEDIAL WORK ☐ ALTERING CASING ☐COMMENCE DRILLING OPNS. ☐ P AND A ☐CASING/CEMENT JOB ☐**Per Underground Injection Control Program Manual**OTHER: 116 G Packer shall be set within or less than 100feet of the uppermost injection ports or open hole.

13. Describe proposed or completed operations. (Clearly state all pertinent details, and give pertinent dates, including estimated date of starting any proposed work). SEE RULE 19.15.7.14 NMAC. For Multiple Completions: Attach wellbore diagram of proposed completion or recompletion.

LINN proposes to clean out well, locate & repair problem and RTI (as described in attachment under Procedure 1. If a problem is discovered LINN proposes to install a liner (as described in the attachment under Procedure 2.

The Oil Conservation Division

MUST BE NOTIFIED 24 Hours

Spud Date: **Prior to the beginning of operations**

Condition of Approval: notify

OCD Hobbs office 24 hours

prior of running MIT Test & Chart

Rig Release Date:

I hereby certify that the information above is true and complete to the best of my knowledge and belief.

SIGNATURE Nancy Fitzwater TITLE: REGULATORY COMPLIANCE SUPERVISOR DATE NOV. 27, 2012Type or print name NANCY FITZWATER E-mail address: nfitzwat@linnenergy.com PHONE: 281-840-4266

For State Use Only

APPROVED BY [Signature] TITLE DTS. MGR DATE 11-28-2012

Conditions of Approval (if any):

NOV 29 2012 Chm

CMU 11

LEA COUNTY, NM

30-025-01445

11/20/2012

RECEIVED

NOV 28 2012

HOBBSOCD

Project Scope: *Procedure 1* - POH w/ Tbg and Pkr, clean out fill, locate and repair problem and RTI.

Procedure 2 - Install 4" Flush Joint Liner from top perforation to surface, if needed.

Procedure 1:

1. Test anchors prior to rigging up.
 2. MIRU WO rig and record casing and tubing pressure.
 3. Bleed pressure off of well.
 4. NU BOP.
 5. Unseat packer and POOH w/ tubing and packer.
 6. RIH w/ workstring and bit. Tag fill at approximately 4239'.
 7. Clean out fill to TD at 4525'.
 8. POOH w/ workstring and bit. LD Bit.
 9. RIH w/ workstring, packer and retrievable bridge plug (Set BP at 4,200').
 10. Test against BP to 500psi. Test backside (tbg/csg annulus) to 500psi. Contact Engr with results and discuss plan if pressure didn't hold.
 11. RDMO.
-

Non Routine Equipment Needs:

4", 11.6#, L-80 Ultra Flush Joint – Purchased
4" wiper plug, ball, 4" crossover, 4" cementing pump out sleeve, 4" D&L casing packer (for cement job)
Lift Nubbins and Stabbing Cup – Rental
4" Packer
New Wellhead components for 4" Liner
Casing Crew
Cementing Services

Contact Information:

Matt Lake – Asset Engineer
Cell – 281-785-4088
Office – 713-263-4933

Jess Hayes - Foreman
Cell – 575-602-3283

Procedure 2:

1. Test anchors prior to rigging up.
2. MIRU WO Rig and record casing and tubing pressure.
3. Bleed pressure off of well.
4. NU BOP.
5. Unseat packer and TOO H with tubing and packer if in hole.
6. PU and TIH with 4" D&L casing packer (for cement job), 4" cementing pump out sleeve, 4" crossover, 4", 11.6#, L-80, Ultra Flush Joint Casing to 4195'.
7. Establish circulation with brine fluid to load the hole.
8. Set packer at 4195'.
9. Drop ball to open port and establish circulation with brine fluid.
10. Rig up cement company.
11. Pump Class "C" cement until circulation is obtained and then displace with wiper plug and brine water. Shut BH valve prior to bumping plug.
12. ND BOP
13. Set slips for 4" casing.
14. Install bowl for 2-3/8" tubing.
15. NU BOP.
16. WOC.
17. Bleed well pressure down or kill well as necessary.
18. PU and RIH with 2 3/8" workstring and packer to 4170'.
19. Perform Acid Job. Pump 3,000 gals of 15% NEFe HCl.
20. POOH and LD workstring and packer.
21. PU 1 jts of 2-3/8" IPC tail pipe, 4" injection packer (Arrowset with on off tool), 2-3/8" IPC injection tubing, and TIH with packer landed at 4170' (unset).
22. ND BOP.
23. Circulate packer fluid.
24. Set packer at 4,170'.
25. NU WH.
26. Conduct mock MIT to 500 PSI.
27. Notify foreman that the well is ready for a witnessed MIT.
28. RDMO.

Contact Information:

Matt Lake – Asset Engineer
Cell – 281-785-4088
Office – 713-263-4933

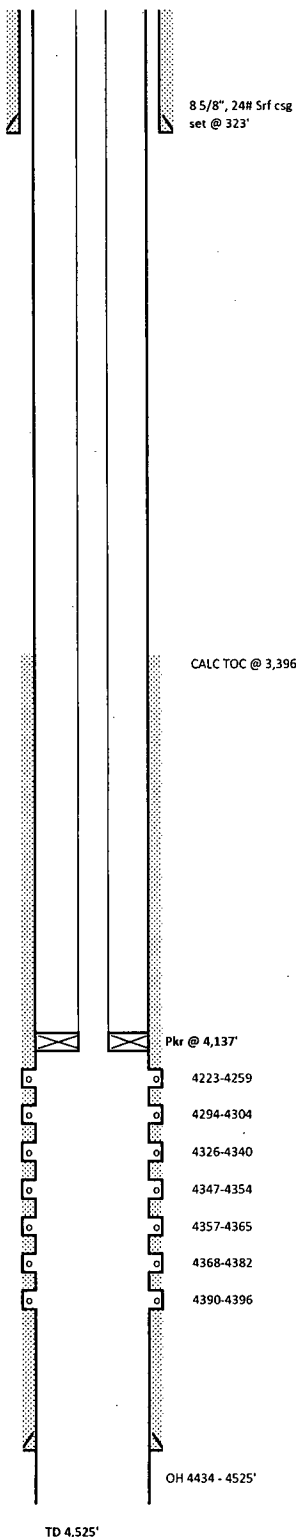
Jess Hayes - Foreman
Cell – 575-602-3283

	Location:
Location	1980' FNL & 1320' FEL
Section:	17-T17S-R33E
Block:	
Survey:	
County:	Lea
Lat/Long:	
Field:	Maljamar Grayburg San Andres
	Elevations:
GL:	4,218'
DF:	4,217'
KB-GL Calc:	4209'
ck w/log?	Yes

Logging Requirements:

[illegible]

Current Wellbore Diagram



Well Name:	CMU #11
API No:	30-025-01445
Spud Date:	9/6/1957
WBD Update:	9/27/2012 M. Lake

Hole Size:	12 1/4"
Surf Csg:	8 5/8", 24# Surface csg
Cement Blend:	Cmt w/250 sxs
Returns:	
TOC:	Circ to Surface

Hole Size:	
<u>Int Csg:</u>	
Cement Blend:	
Returns:	
TOC:	

Details of Perforations

4244 - 4396 Original perfs completed w/ 20,000 gals oil
& 10,000# of sand

4223 - 4396 (10 holes) - Acidize all perfs & OH

Tubing Detail	
Joints	Description
126	2-3/8", IPC J-55
Pkr Depth	AD-1 Tension Packer @ 4,137'

Rod Detail (top to bottom)	
Rods	Description

Pumping Unit:

Hole Size:	7 7/8"
Prod Csg:	5 1/2" 14# J-55 ST&C
Capacity (bbl/ft):	
Cement Blend:	Cmt w/150 sxs
Returns:	
TOC:	
Depth	4,434'
Lead Cement Blend:	
Tail Cement Blend:	

RECEIVED
NOV 28 2012
HOBBSUCD