

District I  
1625 N. French Dr., Hobbs, NM 88240  
Phone: (575) 393-6161 Fax: (575) 393-0720  
District II  
811 S. First St., Artesia, NM 88210  
Phone: (575) 748-1283 Fax: (575) 748-9720  
District III  
1000 Rio Brazos Road, Aztec, NM 87410  
Phone: (505) 334-6178 Fax: (505) 334-6170  
District IV  
1220 S. St. Francis Dr., Santa Fe, NM 87505  
Phone: (505) 476-3460 Fax: (505) 476-3462

State of New Mexico

Form C-101  
Revised October 25, 2012

HOBBS OCD

Energy Minerals and Natural Resources

NOV 26 2012

Oil Conservation Division

☐ AMENDED REPORT

1220 South St. Francis Dr.

Santa Fe, NM 87505

RECEIVED

APPLICATION FOR PERMIT TO DRILL, RE-ENTER, DEEPEN, PLUGBACK, OR ADD A ZONE

<sup>1</sup> Operator Name and Address McELVAIN ENERGY, INC. 1050 17th STREET SUITE 2500 DENVER, COLORADO 80265		<sup>2</sup> OGRID Number 22044
		<sup>3</sup> API Number 30-025-40869
<sup>4</sup> Property Code 39556	<sup>5</sup> Property Name LITTLE LAKE "16" STATE	<sup>6</sup> Well No. # 1

<sup>7</sup> Surface Location

UL - Lot	Section	Township	Range	Lot Idn	Feet from	N/S Line	Feet From	E/W Line	County
F	16	18S	32E		1900'	NORTH	2100'	WEST	LEA

<sup>8</sup> Proposed Bottom Hole Location

UL - Lot	Section	Township	Range	Lot Idn	Feet from	N/S Line	Feet From	E/W Line	County
F	16	18S	32E		1900'	NORTH	2100'	WEST	LEA

<sup>9</sup> Pool Information

YOUNG NORTH-DELAWARE (65355)
------------------------------

Additional Well Information

<sup>11</sup> Work Type N	<sup>12</sup> Well Type O	<sup>13</sup> Cable/Rotary ROTARY	<sup>14</sup> Lease Type S	<sup>15</sup> Ground Level Elevation 3786.6
<sup>16</sup> Multiple N	<sup>17</sup> Proposed Depth 5950'	<sup>18</sup> Formation DELAWARE	<sup>19</sup> Contractor UNKNOWN	<sup>20</sup> Spud Date 1st QTR 2013
Depth to Ground water 85'		Distance from nearest fresh water well 2800' SOUTHWEST		Distance to nearest surface water UNKNOWN

<sup>21</sup> Proposed Casing and Cement Program

Type	Hole Size	Casing Size	Casing Weight/ft	Setting Depth	Sacks of Cement	Estimated TOC
		SEE ATTACHED SHEET				

Casing/Cement Program: Additional Comments

SEE ATTACHED SHEET	Permit Expires 2 Years From Approval Date Unless Drilling Underway
--------------------	---

<sup>22</sup> Proposed Blowout Prevention Program

Type	Working Pressure	Test Pressure	Manufacturer
CLASS 3	3000 PSI	1500 PSI	CAMERON OR SCHAFFER

<sup>23</sup> I hereby certify that the information given above is true and complete to the best of my knowledge and belief. I further certify that I have complied with 19.15.14.9 (A) NMAC <input type="checkbox"/> and/or 19.15.14.9 (B) NMAC <input type="checkbox"/> , if applicable. Signature: Joe T. Janica Printed name: Joe T. Janica Title: Permit Eng. E-mail Address: joejanica@valornet.com Date: 11/26/12 Phone: 575-391-8503		<p>OIL CONSERVATION DIVISION</p> <p>Approved By: [Signature] Title: DBT/MGR Approved Date: 11-27-2012 Expiration Date: 11-27-2014</p> <p>Conditions of Approval Attached</p>
--	--	--

DEC 03 2012

DISTRICT I  
1625 N. French Dr., Hobbs, NM 88240  
Phone: (575) 393-6161 Fax: (575) 393-4720  
DISTRICT II  
511 S. First St., Artesia, NM 88210  
Phone: (575) 748-1283 Fax: (575) 748-9720  
DISTRICT III  
1000 Rio Brazos Rd., Aztec, NM 87410  
Phone: (505) 334-6178 Fax: (505) 334-6170  
DISTRICT IV  
1220 S. St. Francis Dr., Santa Fe, NM 87505  
Phone: (505) 476-3460 Fax: (505) 476-3462

State of New Mexico  
Energy, Minerals & Natural Resources Department  
OIL CONSERVATION DIVISION  
1220 South St. Francis Dr.  
Santa Fe, New Mexico 87505

Form C-102  
Revised August 1, 2011  
Submit one copy to appropriate  
District Office  
☐ AMENDED REPORT

WELL LOCATION AND ACREAGE DEDICATION PLAT

API Number <b>30-025-40869</b>	Pool Code <b>65355</b>	Pool Name <b>NORTH YOUNG - DELAWARE POOL</b>
Property Code <b>39556</b>	Property Name <b>LITTLE LAKE 16 STATE</b>	Well Number <b>1</b>
OGRID No. <b>22044</b>	Operator Name <b>McELVAIN ENERGY, INC.</b>	Elevation <b>3786.6'</b>

Surface Location

UL or lot no.	Section	Township	Range	Lot Idn	Feet from the	North/South line	Feet from the	East/West line	County
<b>F</b>	<b>16</b>	<b>18 S</b>	<b>32 E</b>		<b>1900</b>	<b>NORTH</b>	<b>2100</b>	<b>WEST</b>	<b>LEA</b>

Bottom Hole Location If Different From Surface

UL or lot no.	Section	Township	Range	Lot Idn	Feet from the	North/South line	Feet from the	East/West line	County

Dedicated Acres <b>40</b>	Joint or Infill	Consolidated Code	Order No.
------------------------------	-----------------	-------------------	-----------

No allowable will be assigned to this completion until all interests have been consolidated or a non-standard unit has been approved by the division.

<p>LITTLE LAKE 16 STATE 1 ELEV. = 3786.6' NMSP-E (NAD 83) Y = 636880.8' N X = 713540.1' E LAT. = N32° 44' 58.45" LONG. = W103° 46' 23.12"</p>	<p><b>OPERATOR CERTIFICATION</b> I hereby certify that the information contained herein is true and complete to the best of my knowledge and belief, and that this organization either owns a working interest or unleased mineral interest in the land including the proposed bottom hole location or has a right to drill this well at this location pursuant to a contract with an owner of such a mineral or working interest, or to voluntary pooling agreement or a compulsory pooling order heretofore entered by the division.</p> <p><i>Joe T. Janica</i> 11/26/12 Signature Date <b>Joe T. Janica</b> Print Name <b>joejanica@valornet.com</b> E-mail Address</p>
	<p><b>SURVEYORS CERTIFICATION</b> I hereby certify that the well location shown on this plat was plotted from field notes of actual surveys made by me or under my supervision, and that the same is true and correct to the best of my belief.</p> <p>Oct. 30, 2012 Date of Survey Signature and Seal of Professional Surveyor  <i>James E. Tompkins</i> Job No.: WTC48758 JAMES E. TOMPKINS 14729 Certificate Number</p>

ELG 11-27-2012

### Hole Size/Casing Size/Cementing Information

Conductor Pipe: 14" Conductor in 26" hole to 40 feet. Cemented with 3 yards Redimix

Surface Hole Size: 12.25" to 1,150 feet (28' into Rustler Anhydrite)

Surface Casing: New 8.625", 32 #/ft, J55, ST&C set @ 1,147 feet

Surf. Csg. Cement: LEAD: **400 sx** Class 'C' mixed @ 13.5 ppg & 1.75 ft<sup>3</sup>/sk Yield

TAIL: **250 sx** Class 'C' mixed @ 14.8 ppg & 1.34 ft<sup>3</sup>/sk Yield

**Cement in single stage to surface**

Prod. Hole Size: 7.875" to 5,950 feet (into lower Delaware)

Production Casing: New 5.5", 17#, J55, ST&C

Prod. Csg. Cement: Stage Tool @ 4,200 feet

**Cement in two stages to surface**

1<sup>st</sup> Stage: **300 sx** 50:50:2 Class 'H' mixed @ 14.2 ppg & 1.28 ft<sup>3</sup>/sk Yield

2<sup>nd</sup> Stage: **LEAD** (3,000' – Surface) **285 sx** 50:50:10 Class 'H' mixed @ 11.9 ppg & 2.23 ft<sup>3</sup>/sk Yield

2<sup>nd</sup> Stage: **TAIL** (4,200 – 3,000') **290 sx** 50:50:2 Class 'H' mixed @ 14.2 ppg & 1.28 ft<sup>3</sup>/sk Yield

### Blowout Prevention Equipment & Test Pressures

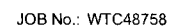
Type: Class III

Working Pressure: 3,000 psi

Test Pressure: 250 psi Low. 3,000 psi High. Annular to 1,500 psi

Manufacturer: Cameron or Shaffer

C:\Projects\03\_4\_One Service\McGladie Encomen\40769 McGladie Encomen\40769 ITMC IAVE 16 STATE 1.daa



# AERIAL MAP



SCALE: 1" = 2000'

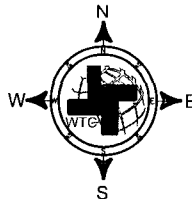
SECTION 16, T 18 S, R 32 E, N.M.P.M.

COUNTY: LEA STATE: NM

DESCRIPTION: 1900' FNL & 2100' FWL

OPERATOR: MC ELVAIN ENERGY, INC.

WELL NAME: LITTLE LAKE 16 STATE-1



## DRIVING DIRECTIONS:

From the intersection of New Mexico State Highway 529 and County Road 126A (Maljamar Road). Go south on County Road 126A for 1.7 miles to a lease road left. Go south 0.9 mile to "Y". Go right 0.6 mile then east 0.1 mile to old pad and proposed location.

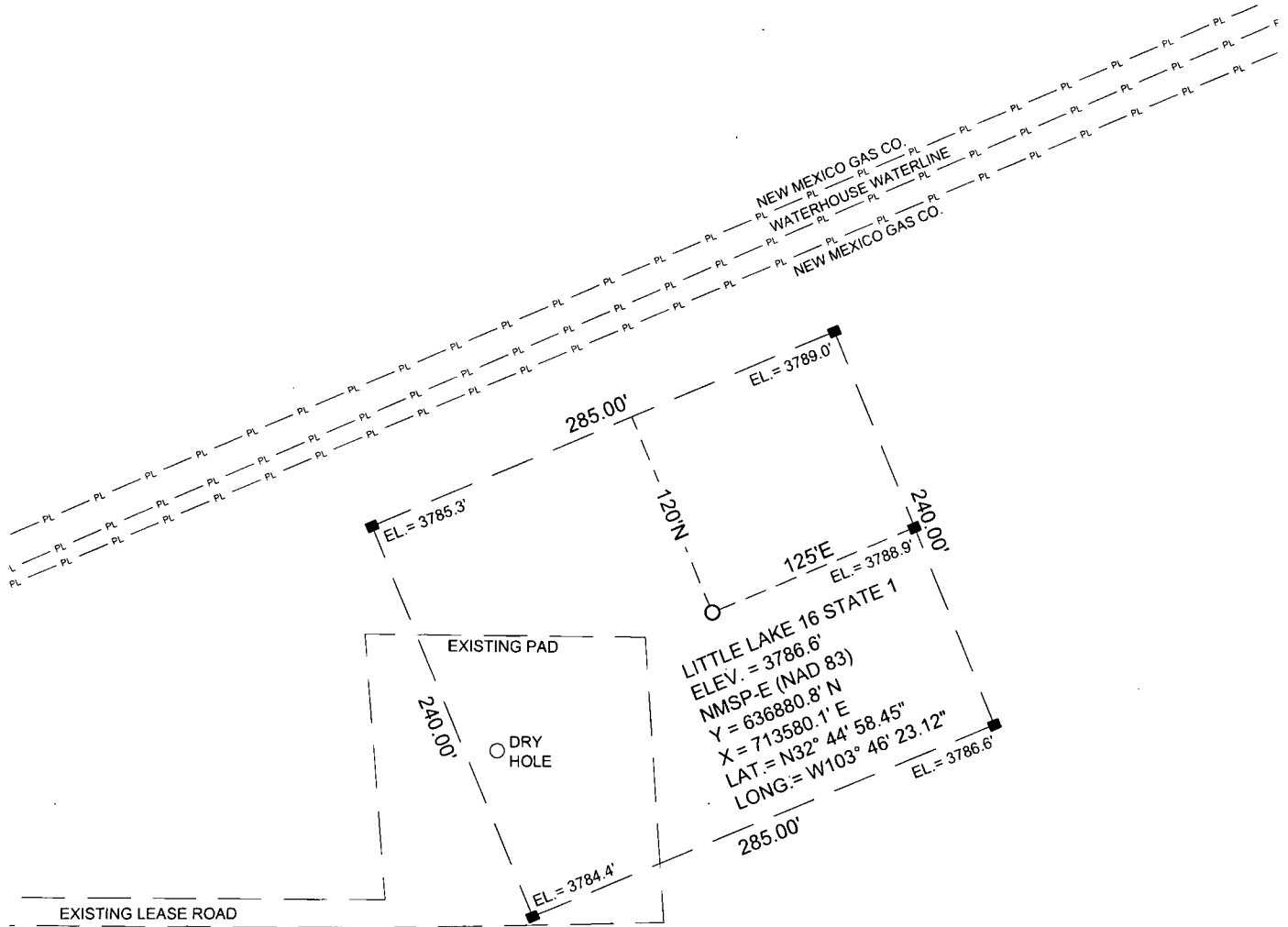


WEST TEXAS CONSULTANTS, INC.  
ENGINEERS PLANNERS SURVEYORS  
405 S.W. 1st STREET  
ANDREWS, TEXAS 79714  
(432) 523-2181

McELVAIN ENERGY, INC.

JOB No.: WTC48758

# SITE LOCATION



SCALE: 1" = 100'

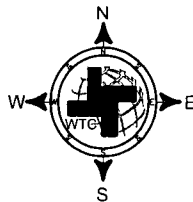
SECTION 16, T 18 S, R 32 E, N.M.P.M.

COUNTY: LEA STATE: NM

DESCRIPTION: 1900' FNL & 2100' FWL

OPERATOR: MC ELVAIN ENERGY, INC.

WELL NAME: LITTLE LAKE 16 STATE-1



## DRIVING DIRECTIONS:

From the intersection of New Mexico State Highway 529 and County Road 126A (Maljamar Road). Go south on County Road 126A for 1.7 miles to a lease road left. Go south 0.9 mile to "Y". Go right 0.6 mile then east 0.1 mile to old pad and proposed location.

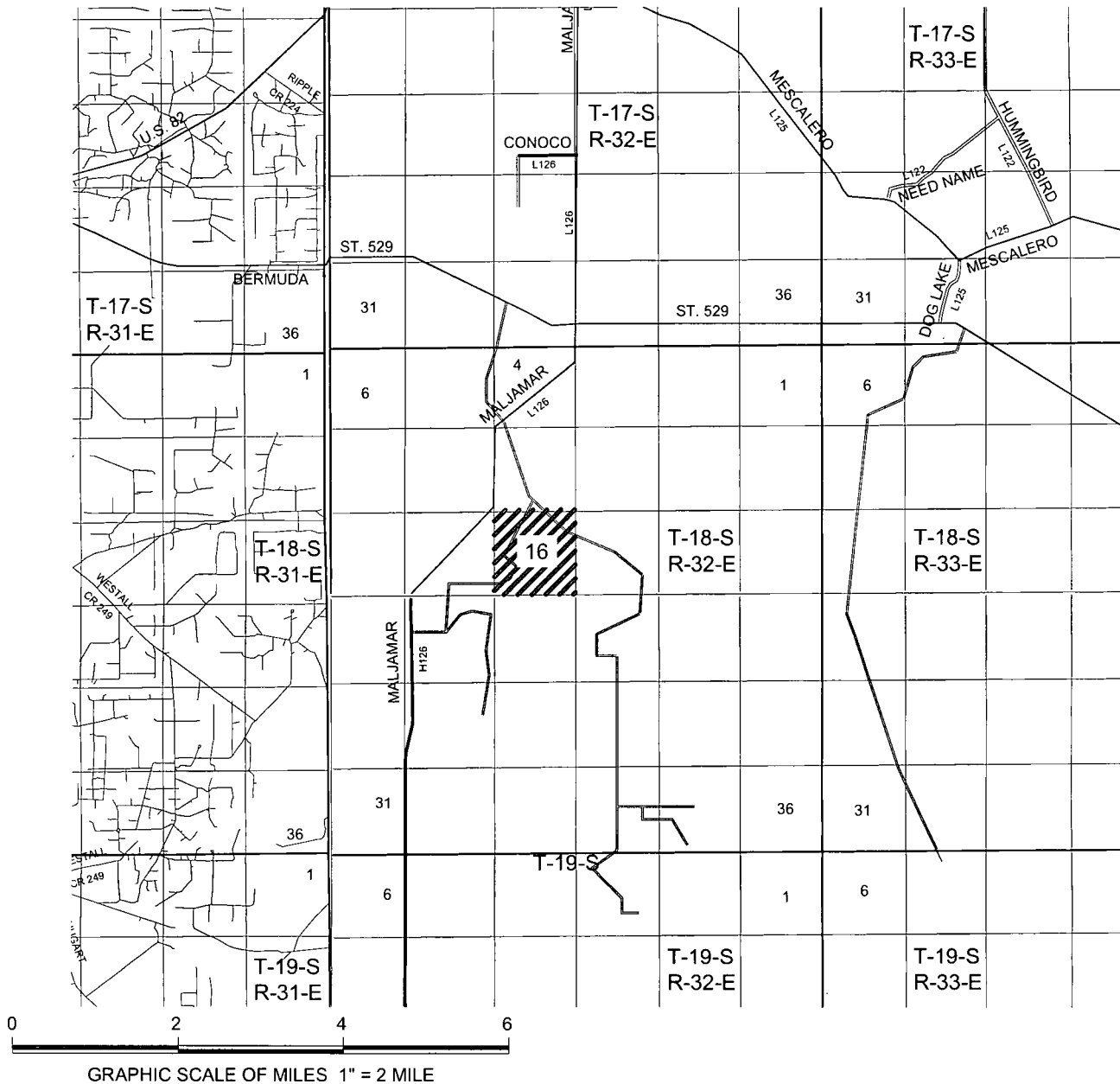


**WEST TEXAS CONSULTANTS, INC.**  
ENGINEERS PLANNERS SURVEYORS  
405 S.W. 1st. STREET  
ANDREWS, TEXAS 79714  
(432) 523-2181

**McELVAIN ENERGY, INC.**

JOB No.: WTC48758

# VICINITY MAP



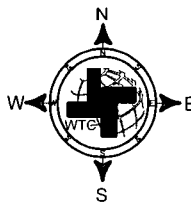
SECTION 16, T 18 S, R 32 E, N.M.P.M.

COUNTY: LEA STATE: NM

DESCRIPTION: 1900' FNL & 2100' FWL

OPERATOR: McELVAIN ENERGY, INC.

WELL NAME: LITTLE LAKE 16 STATE-1



## DRIVING DIRECTIONS:

From the intersection of New Mexico State Highway 529 and County Road 126A (Maljamar Road). Go south on County Road 126A for 1.7 miles to a lease road left. Go south 0.9 mile to "Y". Go right 0.6 mile then east 0.1 mile to old pad and proposed location.



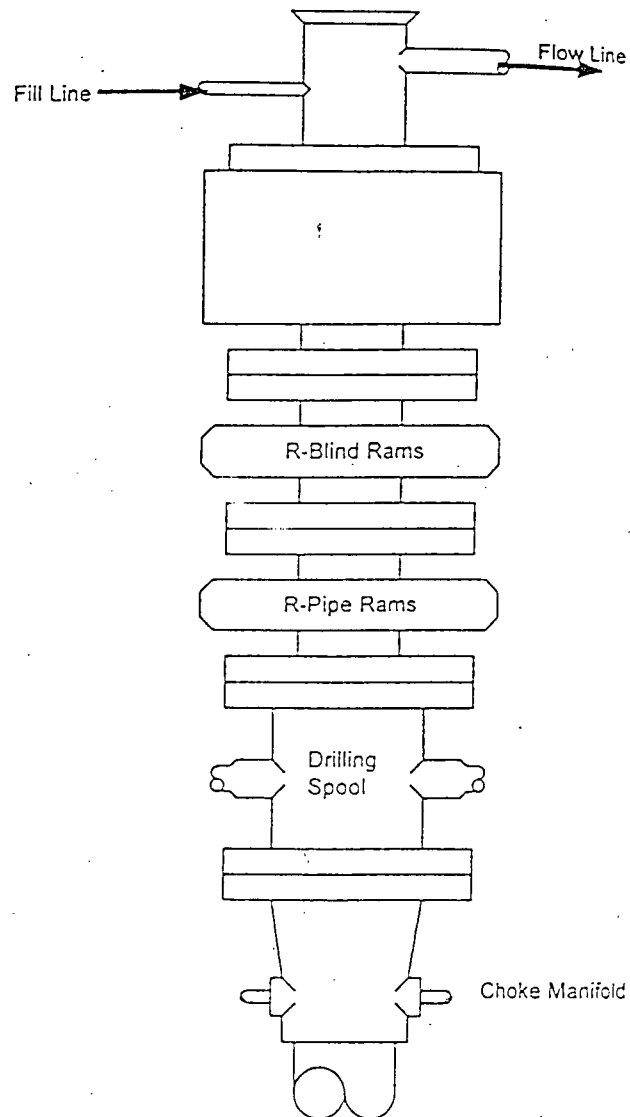
**West Texas Consultants, Inc.**  
ENGINEERS PLANNERS SURVEYORS  
405 S.W. 1st STREET  
ANDREWS, TEXAS 79714  
(432) 523-2181

**McELVAIN ENERGY, INC.**

JOB No.: WTC48758

# BLOWOUT PREVENTER SYSTEM

3000 PSI WORKING PRESSURE



Type 900 Series  
3000 psi WP

## Choke Manifold Assembly for 3M WP System

