

**MULTI-POINT SURFACE USE AND OPERATIONS PLAN****HOBBS OCD****MEWBOURNE OIL COMPANY**

Norte "13" IL Federal #1H  
 1910' FSL & 150' FEL (SHL)  
 Sec 13-T19S-R32E  
 Lea County, New Mexico

**NOV 27 2012****EG 12-3-2012****RECEIVED**

This plan is submitted with Form 3160-3, Application for Permit to Drill, Covering the above described well. The purpose of this plan is to describe the location of the proposed well, the proposed construction activities and operations plan, the magnitude of the surface disturbance involved, and the procedures to be followed in restoring the surface so that a complete appraisal can be made of the environmental impact associated with the proposed operations.

**1. Existing Roads:**

- A. Exhibit #3 is a road map showing the location of the proposed well. Existing and proposed roads are highlighted in black. Exhibits #3A-3D are area maps showing the location of the proposed well and access roads.
- B. Directions to location from Hobbs, NM: Go west on US 62-180 west 37 miles to highway 243. Turn north west 4 ½ miles to county road 126A. Turn north for 6 miles then east on Speed bump road for 4.9 miles to lease road. Turn south on lease road for .2 miles to location.
- C. Existing roads will be maintained in a condition the same as or better than before operations begin.

**2. Proposed Access Road:**

- A. Approx. 260' of new road construction is required.
- B. The maximum width of the driving surface will be 14 feet. The road will be crowned and ditched with a 2% slope from the tip of the crown to the edge of the driving surface. The ditches will be 1 foot deep with 3:1 slopes. The road will be surfaced with rolled and compacted caliche.
- C. Mewbourne Oil Co. will cooperate with other operators in the maintenance of lease roads.

**3. Location of Existing Wells:**

There are producing wells within the immediate vicinity of the well site. Exhibit #4 shows the proposed well and existing wells within a one mile radius.

**4. Location of Existing and/or Proposed Facilities:**

- A. There are production facilities on this lease at the present time, Norte 13 #1.
- B. In the event that the well is productive, production facilities will be located on the west side of the well pad. Electricity line will tie into existing infrastructure along east edge of the section. Electricity will require 150' power line span to tie into Xcel's existing power line.
- C. All production vessels left on location will be painted to conform to BLM painting stipulations within 180 days of installation.
- D. If production facilities are not located on this location above ground flowlines will follow the road to MOC's Norte 13 #1.

**5. Location and Type of Water Supply**

The well will be drilled with a combination of fresh water and brine water based mud systems. The water will be obtained from commercial suppliers in the area and/or hauled to the location by

transport trucks over existing and proposed roads as indicated in Exhibit #3. Water may be used from a frac pond in Sec. 17 T19S R32E transported by flowlines following existing roads.

## **6. Source of Construction Materials**

All material required for construction of the drill pad and access roads will be obtained from private, state, or federal pits. The construction contractor will be solely responsible for securing construction materials required for this operation and paying any royalties that may be required on those materials.

## **7. Methods of Handling Waste Disposal:**

- A. Drill cuttings not retained for evaluation purposed will be hauled to a permitted off-site facility.
- B. Water produced during operations will be disposed off-site at an approved facility.
- C. If any liquid hydrocarbons are produced during operations, those liquids will be stored in suitable tanks until sold.
- D. Portable toilets will be on location during drilling operations. Waste will be disposed at an approved off-site facility.
- E. All trash, junk, and other waste materials will be stored in proper containers to prevent dispersal and will be removed to an appropriate facility within one week of cessation of drilling and completion activities.

## **8. Ancillary Facilities**

There are no ancillary facilities within the immediate vicinity of the proposed well site.

## **9. Well Site Layout**

- A. A diagram of the drill pad is shown in Exhibit #5. Dimensions of the pad and location of major rig components are shown.
- B. The pad dimension of 280' x 320' has been staked and flagged.
- C. Archaeological is approved by BLM MOA.

## **10. Plans for Restoration of Surface**

- A. Within 90 days of cessation of drilling and completion operations, all equipment not necessary for production operations will be removed. The location and surrounding area will be cleaned of all trash and junk to assure the well site is left as esthetically pleasing as reasonably possible.
- B. Interim reclamation:
  - i. All areas not needed for production operations will be reclaimed as shown in the interim reclamation layout, exhibit #6.

- ii. In these areas, caliche will be removed, the land will be recontoured to match the surrounding area, and the topsoil from the stockpile will be spread over these areas.
- iii. The disturbed area will be restored by seeding during the proper growing season.
- iv. Any additional caliche required for production facilities will be obtained from the reclaimed areas.

**C. Final Reclamation:**

- i. Upon cessation of the proposed operations, if the well is abandoned, all equipment and trash will be removed and taken to a proper facility.
- ii. The location and road surfacing material will be removed and used to patch area lease roads.
- iii. The entire location will be restored to the original contour as much as reasonable possible.
- iv. The topsoil used for interim reclamation will be spread over the entire location.
- v. The disturbed area will be restored by seeding during the proper growing season.
- vi. All restoration work will be completed within 180 days of cessation of activities.

**11. Surface Ownership:**

The surface is owned BLM.

**12. Other Information:**

- A. The primary use of the surface at the location is for grazing of livestock.
- B. Arch survey is supplied by MOA.

**13. Operators Representative:**

- A. Through APD approval, drilling, completion and production operations:

**N.M. Young, District Manager**  
Mewbourne Oil Company  
PO Box 5270  
Hobbs, NM 88241  
575-393-5905

## Mewbourne Oil Company

PO Box 5270  
Hobbs, NM 88241  
(575) 393-5905

I hereby certify that I, or someone under my direct supervision, have inspected the drill site and access route proposed herein; that I am familiar with the conditions which currently exist; that I have full knowledge of State and Federal laws applicable to this operation; that the statements made in this APD package are, to the best of my knowledge, true and correct; and that the work associated with the operations proposed herein will be performed in conformity with this APD package and the terms and conditions under which it is approved. I also certify that I, or the company I represent, am responsible for the operations conducted under this application. These statements are subject to the provisions of 18 U.S.C. 1001 for the filing of false statements.

Executed this 18 day of July, 2012.

Name: NM Young

Signature: 

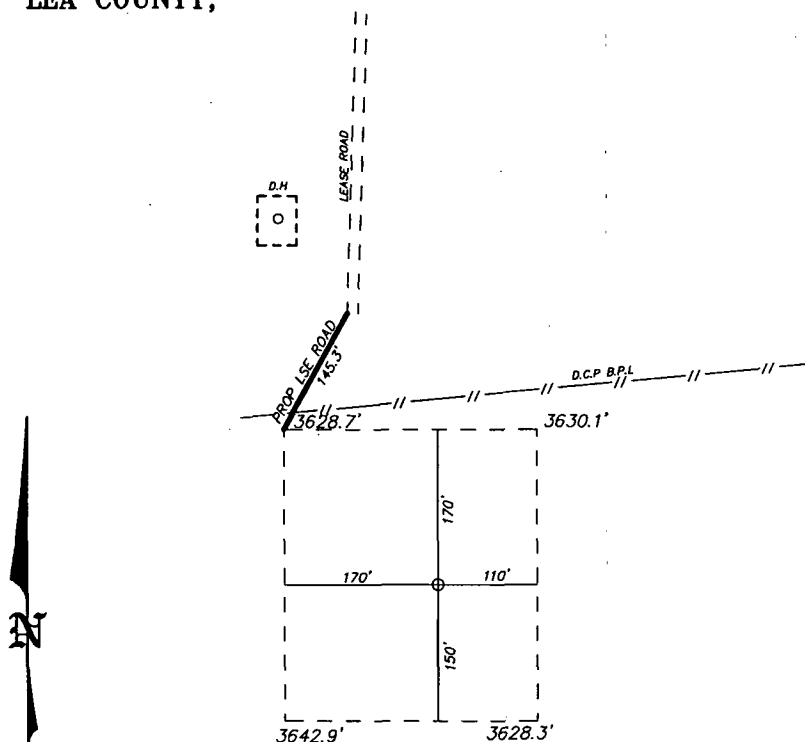
Position Title: Hobbs District Manager

Address: PO Box 5270, Hobbs NM 88241

Telephone: 575-393-5905

E-mail: myoung@mewbourne.com

SECTION 13, TOWNSHIP 19 SOUTH, RANGE 32 EAST, N.M.P.M.,  
LEA COUNTY, NEW MEXICO.



MEWBOURNE OIL COMPANY  
NORTE 13 IL FEDERAL #1H  
ELEV. - 3630'

SURFACE LOCATION  
Lat - N 32°39'29.44"  
Long - W 103°42'40.18"  
NMSPCE- N 603717.14  
E 691481.43  
(NAD-27)

200 0 200 400 FEET  
SCALE: 1" = 200'

**MEWBOURNE OIL COMPANY**

REF: NORTE 13 IL FEDERAL #1H / WELL PAD TOPO

THE NORTE 13 IL FEDERAL #1H LOCATED 1910'  
FROM THE SOUTH LINE AND 150' FROM THE EAST LINE OF  
SECTION 13, TOWNSHIP 19 SOUTH, RANGE 32 EAST,  
N.M.P.M., LEA COUNTY, NEW MEXICO.

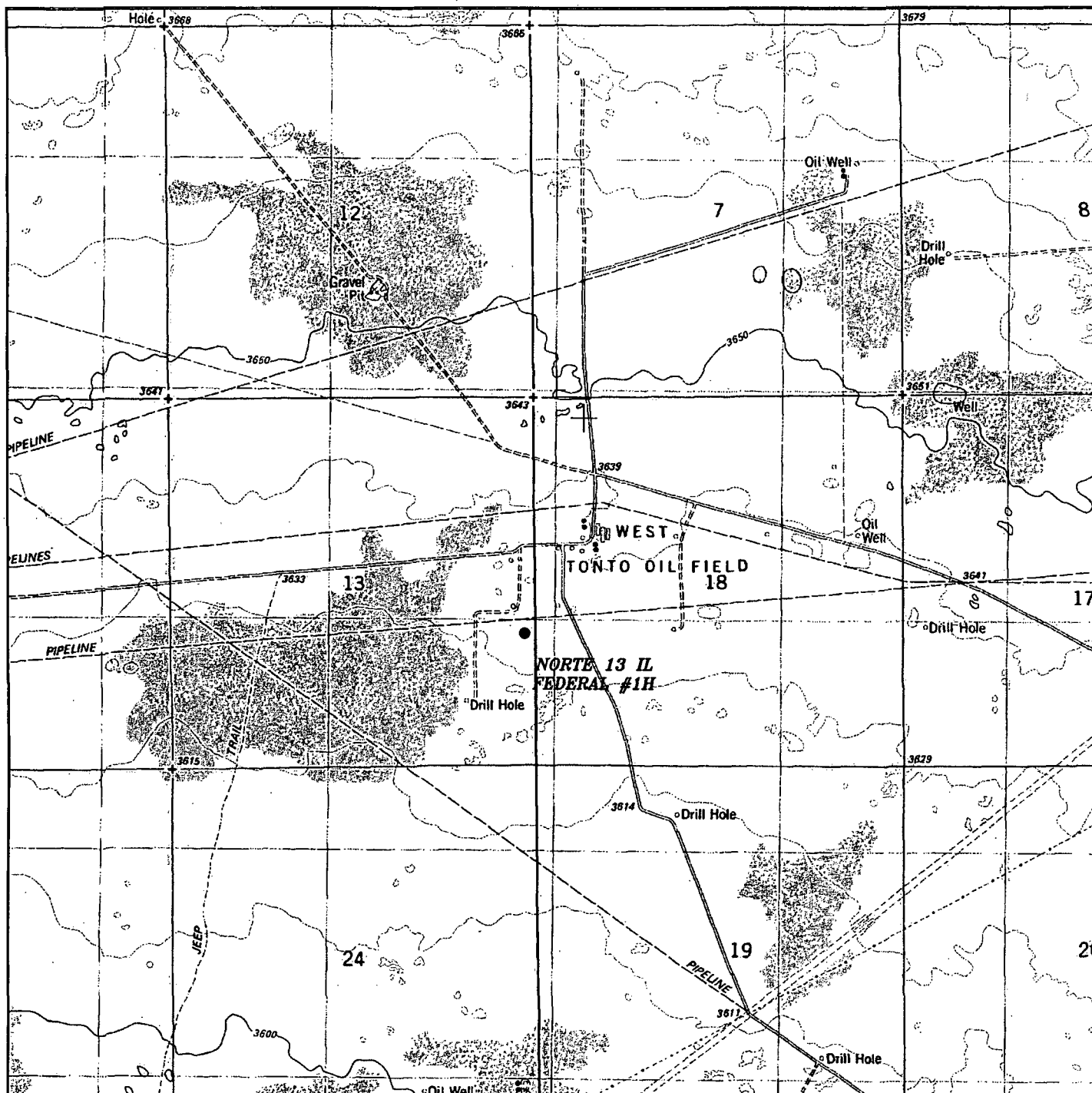
**BASIN SURVEYS** P.O. BOX 1786-HOBBS, NEW MEXICO

W.O. Number: 26812 Drawn By: D. JONES

Date: 06-05-2012 Disk: DAJ 26812

Survey Date: 05-22-2012 Sheet 1 of 1 Sheets

EXHIBIT "3"



**NORTE 13 IL FEDERAL #1H**  
 1910' FSL and 150' FEL  
 Section 13, Township 19 South, Range 32 East,  
 N.M.P.M., LEA County, New Mexico.



P.O. Box 1786  
 1120 N. West County Rd.  
 Hobbs, New Mexico 88241  
 (575) 393-7316 - Office  
 (575) 392-2206 - Fax  
 basinsurveys.com

W.O. Number: DAJ 26812

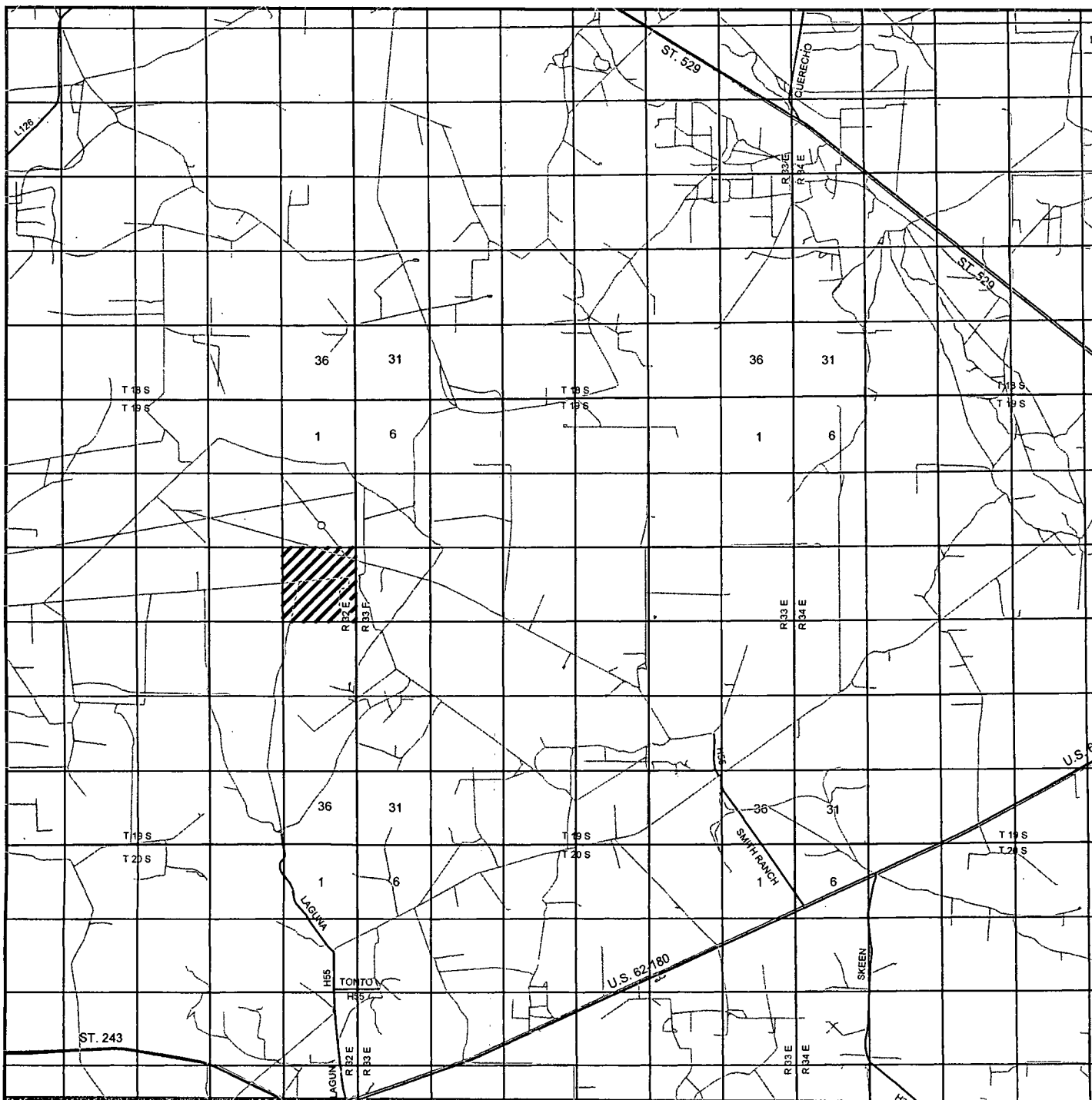
Survey Date: 05-22-2012

Scale: 1" = 2000'

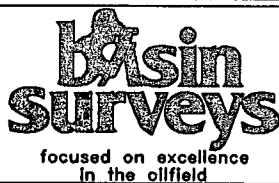
Date: 06-05-2012

**MEWBOURNE  
 OIL COMPANY**

**EXHIBIT "3A"**



**NORTE 13 IL FEDERAL #1H**  
**1910' FSL and 150' FEL**  
**Section 13, Township 19 South, Range 32 East,**  
**N.M.P.M., LEA County, New Mexico.**



P.O. Box 1786  
 1120 N. West County Rd.  
 Hobbs, New Mexico 88241  
 (575) 393-7316 - Office  
 (575) 392-2206 - Fax  
 basinsurveys.com

W.O. Number: DAJ 26812

Survey Date: 05-22-2012

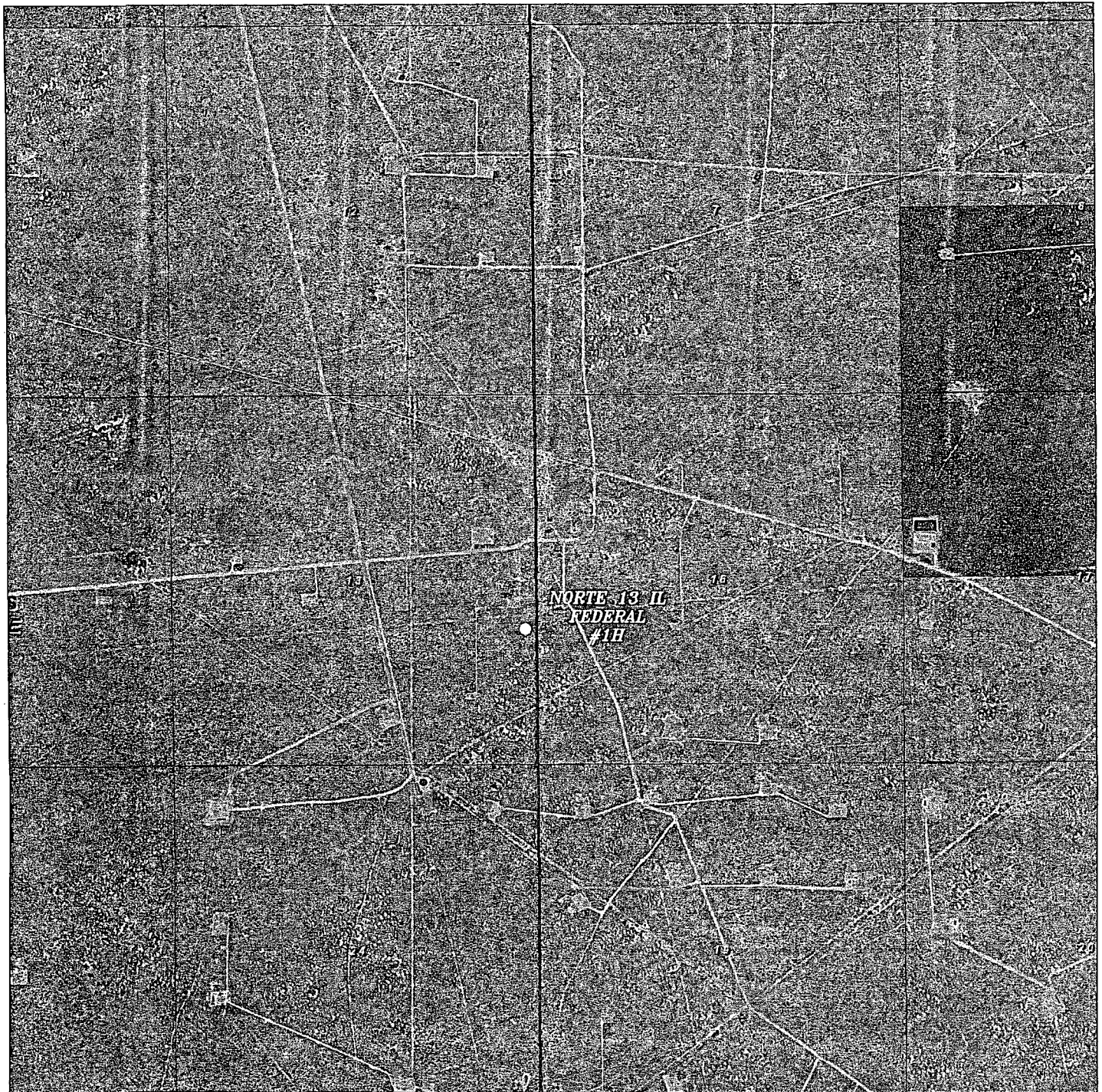
Scale: 1" = 2 Miles

Date: 06-05-2012



**MEWBOURNE**  
**OIL COMPANY**

**EXHIBIT "3B"**



NORTE 13 IL FEDERAL #1H  
1910' FSL and 150' FEL  
Section 13, Township 19 South, Range 32 East,  
N.M.P.M., LEA County, New Mexico.

**basin**  
**surveys**  
focused on excellence  
in the oilfield

P.O. Box 1786  
1120 N. West County Rd.  
Hobbs, New Mexico 88241  
(575) 393-7316 - Office  
(575) 392-2206 - Fax  
basinsurveys.com

W.O. Number: DAJ 26812

Scale: 1" = 2000'

YELLOW TINT - USA LAND  
BLUE TINT - STATE LAND  
NATURAL COLOR - FEE LAND



MEWBOURNE  
OIL COMPANY

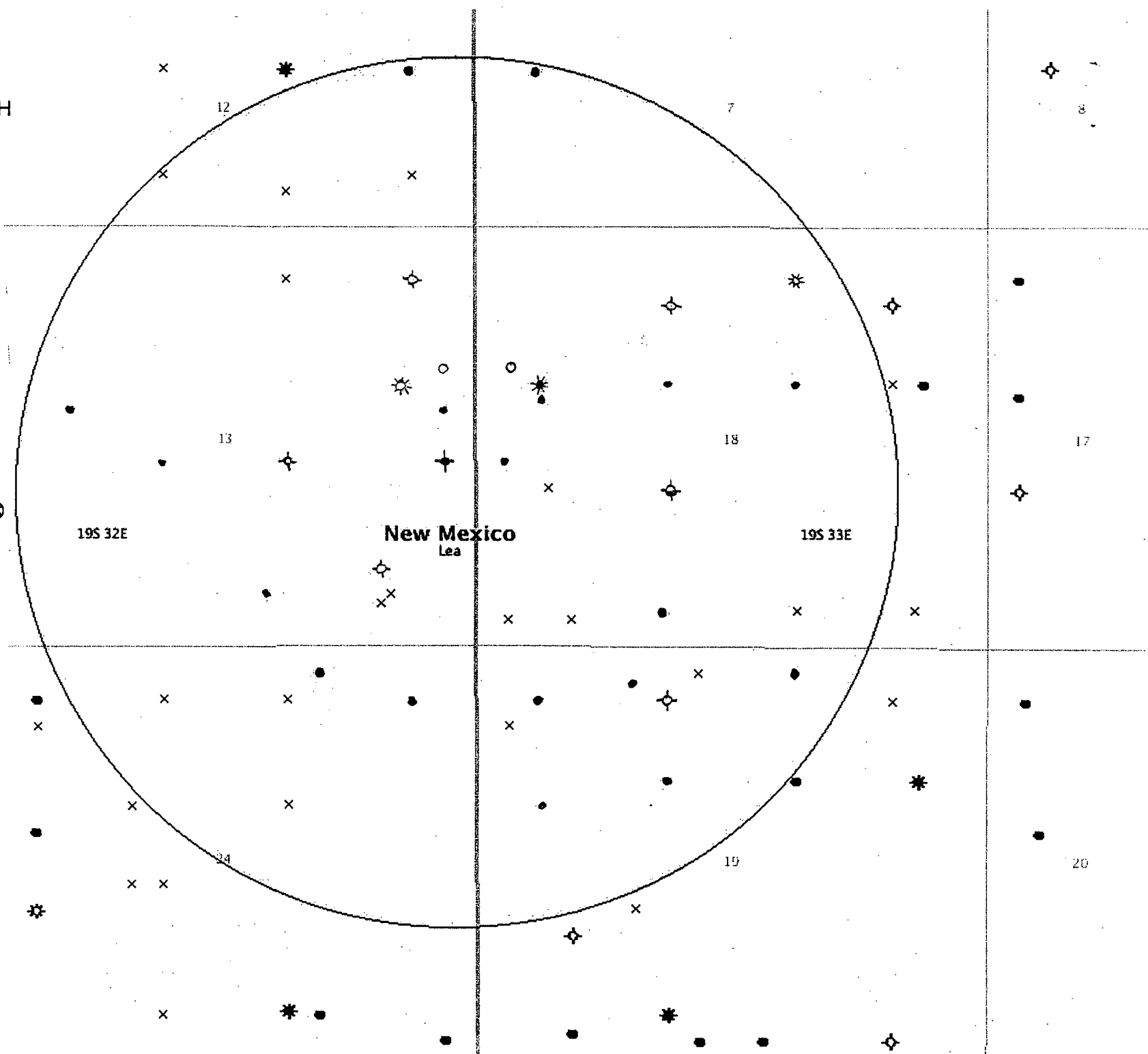
EXHIBIT "3C"



# EXHIBIT "4"

Norte 13 IL Federal #1H

- Location (Permit)
- Drilling (Well Start)
- × Abandoned Location (Permit)
- ⊛ Gas Well
- Oil Well
- ⊛ Oil and Gas Well
- ⊛ Other (Observation, etc)
- ⊛ Injection Well
- Suspended
- ⊛ Plugged Gas Well
- ⊛ Plugged Oil Well
- ⊛ Plugged Oil and Gas
- ⊛ Dry Hole (No Shows)
- ⊛ Dry Hole w/Gas Show
- ⊛ Dry Hole w/Oil Show
- ⊛ Dry Hole w/Oil and Gas Show



- Location (Permit)
- Drilling (Well Start)
- × Abandoned Location (Permit)
- ✱ Gas Well
- Oil Well
- ✱ Oil and Gas Well
- Other (Observation, etc)
- ✱ Injection Well
- ◇ Suspended
- ✱ Plugged Gas Well
- ✱ Plugged Oil Well
- ✱ Plugged Oil and Gas
- ◇ Dry Hole (No Shows)
- ✱ Dry Hole w/Gas Show
- ◇ Dry Hole w/Oil Show
- ✱ Dry Hole w/Oil and Gas Show

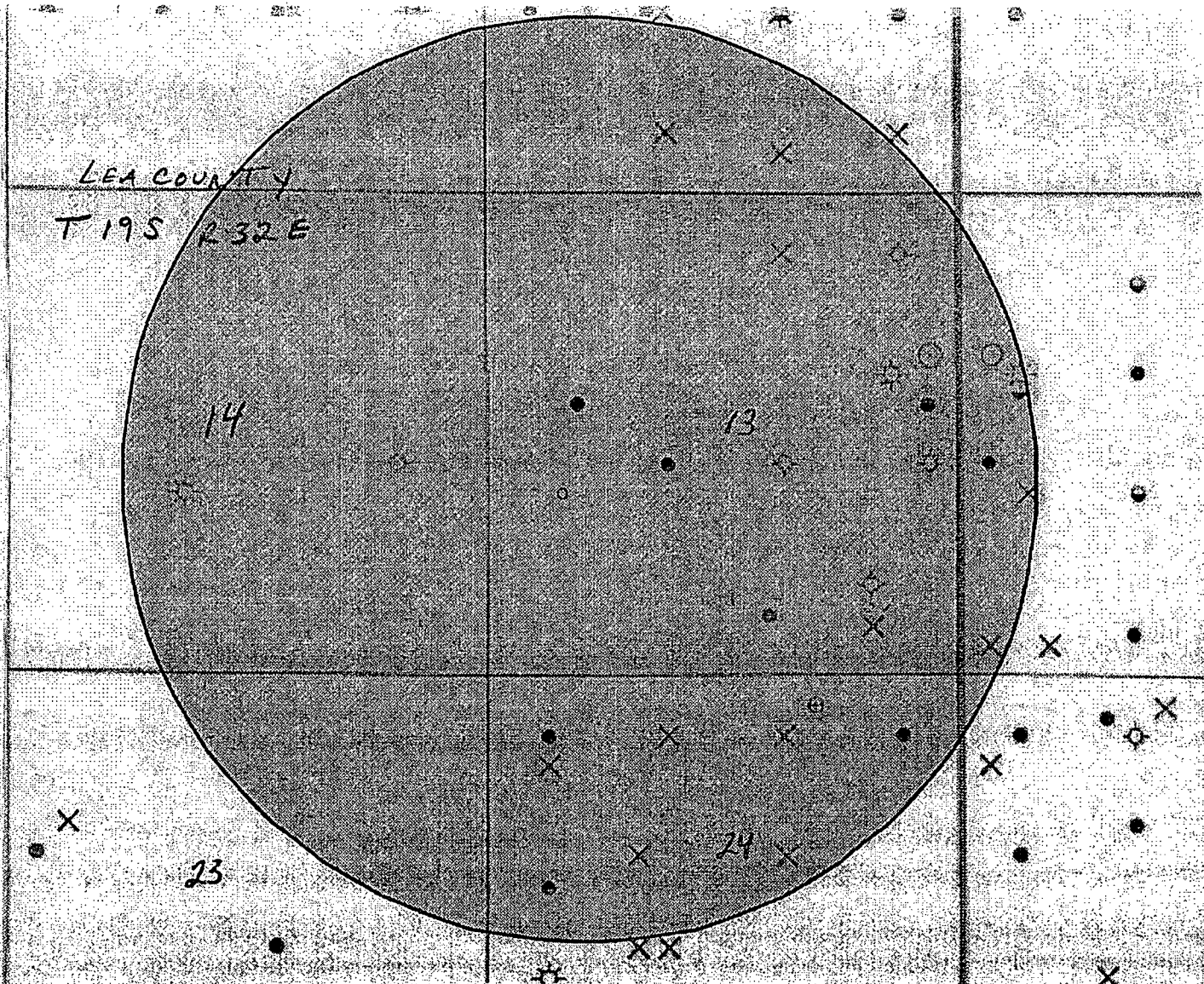


EXHIBIT "4A"

BHL Norte "13" IL Federal #1H