

DISTRICT I  
1625 N. French Dr., Hobbs, NM 88240  
Phone: (575) 393-6161 Fax: (575) 393-0720

DISTRICT II  
811 S. First St., Artesia, NM 88210  
Phone: (575) 748-1283 Fax: (575) 748-9720

DISTRICT III  
1000 Rio Brazos Road, Aztec, NM 87410  
Phone: (505) 334-6178 Fax: (505) 334-6170

DISTRICT IV  
1220 S. St. Francis Dr., Santa Fe, NM 87505  
Phone: (505) 476-3460 Fax: (505) 476-3462

HOBBS OGD

DEC 17 2012

RECEIVED

# WELL LOCATION AND ACREAGE DEDICATION PLAT

State of New Mexico

Energy, Minerals & Natural Resources Department

OIL CONSERVATION DIVISION

1220 South St. Francis Dr.  
Santa Fe, New Mexico 87505

Form C-102

Revised August 1, 2011

Submit one copy to appropriate  
District Office

AMENDED REPORT

API Number <b>30-025-40888</b>	Pool Code <b>37687</b>	Pool Name <b>Maljamar; Yeso West</b>
Property Code <b>39256</b>	Property Name <b>PAN HEAD FEE</b>	Well Number <b>4H</b>
OGRID No. <b>229137</b>	Operator Name <b>COG OPERATING, LLC</b>	Elevation <b>4163</b>

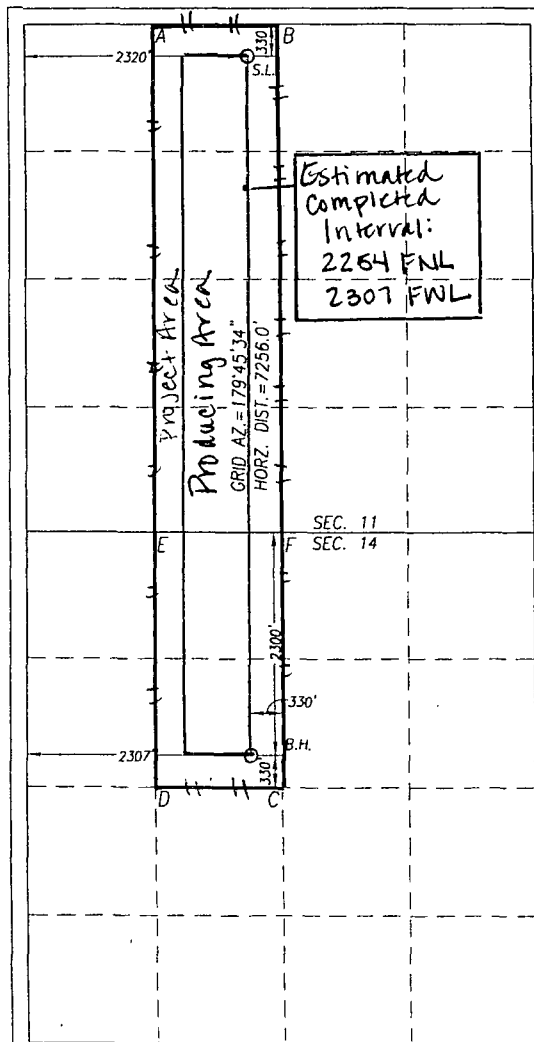
## Surface Location

UL or lot No.	Section	Township	Range	Lot Idn	Feet from the	North/South line	Feet from the	East/West line	County
C	11	17-S	32-E		330	NORTH	2320	WEST	LEA

## Bottom Hole Location If Different From Surface

UL or lot No.	Section	Township	Range	Lot Idn	Feet from the	North/South line	Feet from the	East/West line	County
F	14	17-S	32-E		2300	NORTH	2307	WEST	LEA
Dedicated Acres <b>240</b>	Joint or Infill	Consolidation Code	Order No.						

NO ALLOWABLE WILL BE ASSIGNED TO THIS COMPLETION UNTIL ALL INTERESTS HAVE BEEN CONSOLIDATED OR A NON-STANDARD UNIT HAS BEEN APPROVED BY THE DIVISION



GEODETIC COORDINATES  
NAD 27 NME

SURFACE LOCATION  
Y=675386.6 N  
X=682929.8 E

LAT.=32.855303° N  
LONG.=103.737636° W

BOTTOM HOLE LOCATION  
Y=668132.5 N  
X=682960.1 E

## CORNER COORDINATES TABLE

A - Y=675712.2 N, X=681927.0 E  
B - Y=675717.9 N, X=683245.7 E  
C - Y=667803.8 N, X=683292.5 E  
D - Y=667799.1 N, X=681973.7 E  
E - Y=670432.4 N, X=681956.0 E  
F - Y=670431.5 N, X=683273.3 E

## OPERATOR CERTIFICATION

I hereby certify that the information herein is true and complete to the best of my knowledge and belief, and that this organization either owns a working interest or unleased mineral interest in the land including the proposed bottom hole location or has a right to drill this well at this location pursuant to a contract with an owner of such mineral or working interest, or to a voluntary pooling agreement or a compulsory pooling order heretofore entered by the division.

Signature: Kelly J. Holly Date: 12-3-12  
Printed Name: Kelly J. Holly  
E-mail Address: kholly@concho.com

## SURVEYOR CERTIFICATION

I hereby certify that the well location shown on this plat was plotted from field notes of actual surveys made by me or under my supervision, and that the same is true and correct to the best of my belief.

OCTOBER 11, 2012

Date of Survey  
Signature & Seal of Professional Surveyor:

GARY G. EIDSON  
NEW MEXICO  
12641  
Certificate Number: Gary G. Eidson 12641  
Ronald L. Eidson 3239  
BKL  
WSC W.O. 12.11.1543

DEC 17 2012