

District I
1625 N. French Dr., Hobbs, NM 88240
Phone: (575) 393-6161 Fax: (575) 393-0720
District II
811 S. First St., Artesia, NM 88210
Phone: (575) 748-1283 Fax: (575) 748-9720
District III
1000 Rio Brazos Road, Aztec, NM 87410
Phone: (505) 334-6178 Fax: (505) 334-6179
District IV
1220 S. St. Francis Dr., Santa Fe, NM 87505
Phone: (505) 476-3460 Fax: (505) 476-3462

HOBBS OCD

DEC 13 2012

RECEIVED

State of New Mexico
Energy, Minerals & Natural Resources Department
OIL CONSERVATION DIVISION
1220 South St. Francis Dr.
Santa Fe, NM 87505

Form C-102
Revised August 1, 2011
Submit one copy to appropriate
District Office
AMENDED REPORT

WELL LOCATION AND ACREAGE DEDICATION PLAT

¹ API Number 30-025-40748	² Pool Code 97930	³ Pool Name Bone Spring
⁴ Property Code 39267 39596	⁵ Property Name IRONHOUSE "20" STATE	
⁷ OGRID No. 6137	⁸ Operator Name DEVON ENERGY PRODUCTION COMPANY, L.P.	⁶ Well Number 2H
		⁹ Elevation 3927.8

¹⁰ Surface Location

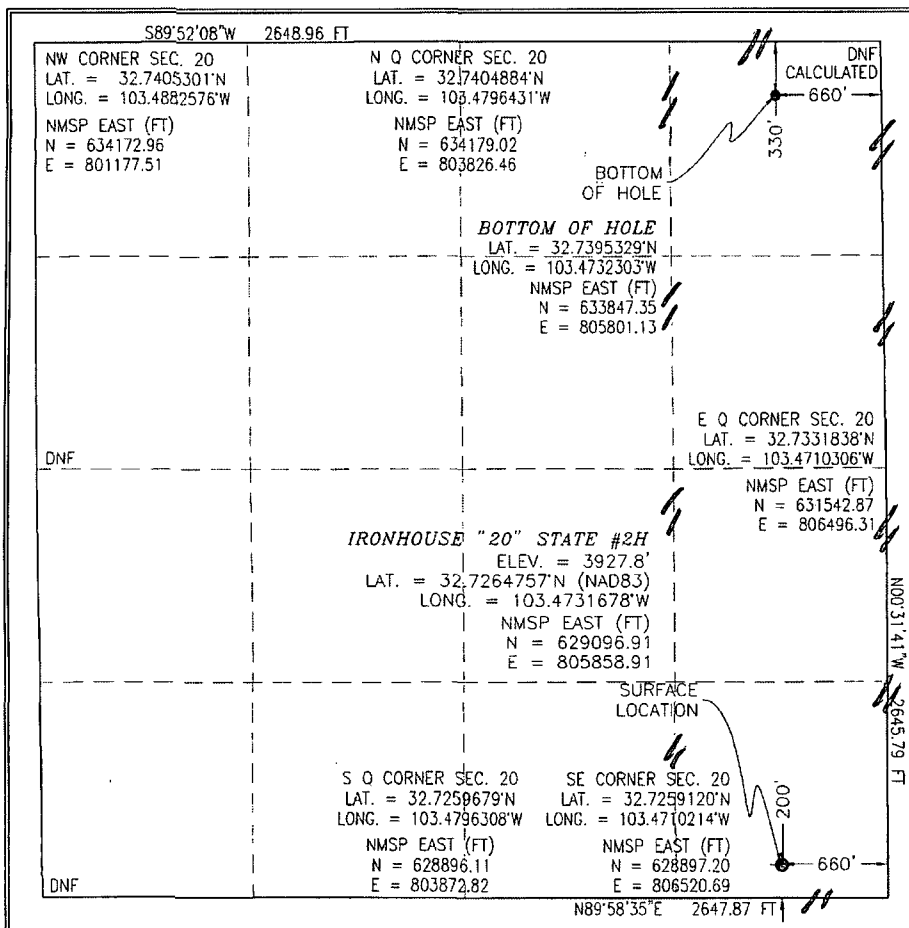
UL or lot no.	Section	Township	Range	Lot Idn	Feet from the	North/South line	Feet from the	East/West line	County
P	20	18 S	35 E		200	SOUTH	660	EAST	LEA

¹¹ Bottom Hole Location If Different From Surface

UL or lot no.	Section	Township	Range	Lot Idn	Feet from the	North/South line	Feet from the	East/West line	County
A	20	18 S	35 E		330	NORTH	660	EAST	LEA

¹² Dedicated Acres	¹³ Joint or Infill	¹⁴ Consolidation Code	¹⁵ Order No.

No allowable will be assigned to this completion until all interests have been consolidated or a non-standard unit has been approved by the division.



¹⁷ OPERATOR CERTIFICATION

I hereby certify that the information contained herein is true and complete to the best of my knowledge and belief, and that this organization either owns a working interest or unleased mineral interest in the land including the proposed bottom hole location or has a right to drill this well at this location pursuant to a contract with an owner of such a mineral or working interest, or to a voluntary pooling agreement or a compulsory pooling order heretofore entered by the division.

Signature: *David H. Cook* Date: 12/12/12

David H. Cook Regulatory Specialist
Printed Name

david.cook@dmv.com
E-mail Address

¹⁸ SURVEYOR CERTIFICATION

I hereby certify that the well location shown on this plat was plotted from field notes of actual surveys made by me or under my supervision, and that the same is true and correct to the best of my belief.

OCTOBER 24 2012
Date of Survey

Signature and Seal of Professional Surveyor: *[Signature]*

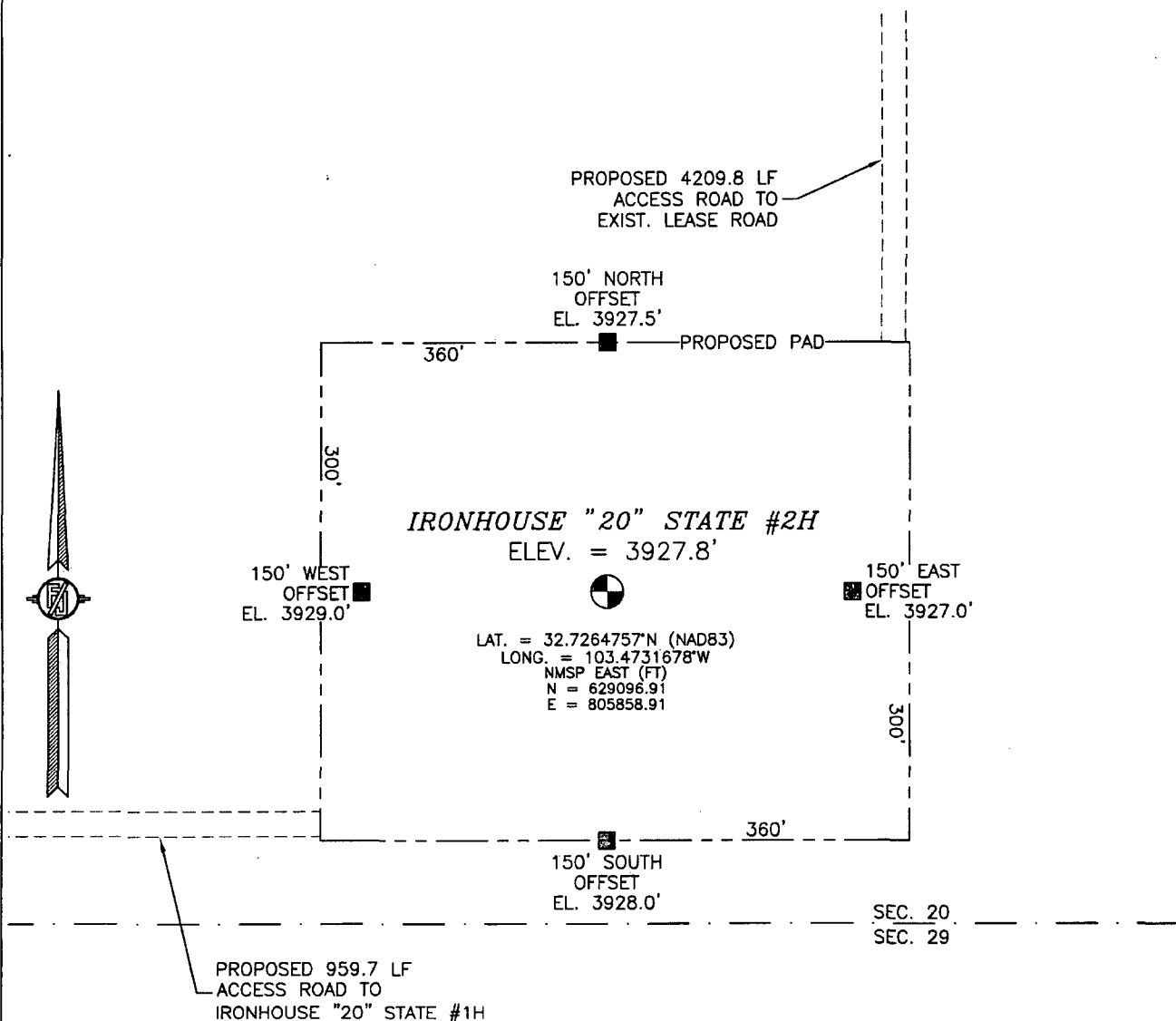
Certificate Number: FJL-MONT-JARAMILLO, RLS-12797

SURVEY NO. 4338

** Amended*

DEC 19 2012

SECTION 20, TOWNSHIP 18 SOUTH, RANGE 35 EAST, N.M.P.M.
LEA COUNTY, STATE OF NEW MEXICO



0 10 50 100 200

SCALE 1" = 100'

DIRECTIONS TO LOCATION

FROM INTERSECTION OF STATE HIGHWAY 529 AND STATE HIGHWAY 238, GO NORTH ON STATE HIGHWAY 238 APPROX. 3.9 MILES TO A LEASE ROAD ON WEST SIDE (LEFT) OF STATE HIGHWAY 238, TURN LEFT (WEST) AT CATTLE GUARD, GO APPROX. 0.4 MILES, PASS BY A CALICHE PIT ON NORTH SIDE (RIGHT) OF LEASE ROAD TO AN EXISTING LEASE ROAD ON THE SOUTH SIDE (LEFT). TURN LEFT (SOUTH) TO AN EXISTING DRY HOLE PAD TO A LATH AT THE SOUTHEAST CORNER PAD, RED AND WHITE RIBBON MARKS BEGINNING OF ROAD TO DEVON IRONHOUSE STATE #2H FROM IRONHOUSE STATE #2H AT SOUTHWEST CORNER OF PAD, PROPOSED ROAD CONTINUES WEST TO IRONHOUSE "20" STATE #1H.

DEVON ENERGY PRODUCTION COMPANY, L.P.
IRONHOUSE "20" STATE #2H
LOCATED 200 FT. FROM THE SOUTH LINE
AND 660 FT. FROM THE EAST LINE OF
SECTION 20, TOWNSHIP 18 SOUTH,
RANGE 35 EAST, N.M.P.M.
LEA COUNTY, STATE OF NEW MEXICO

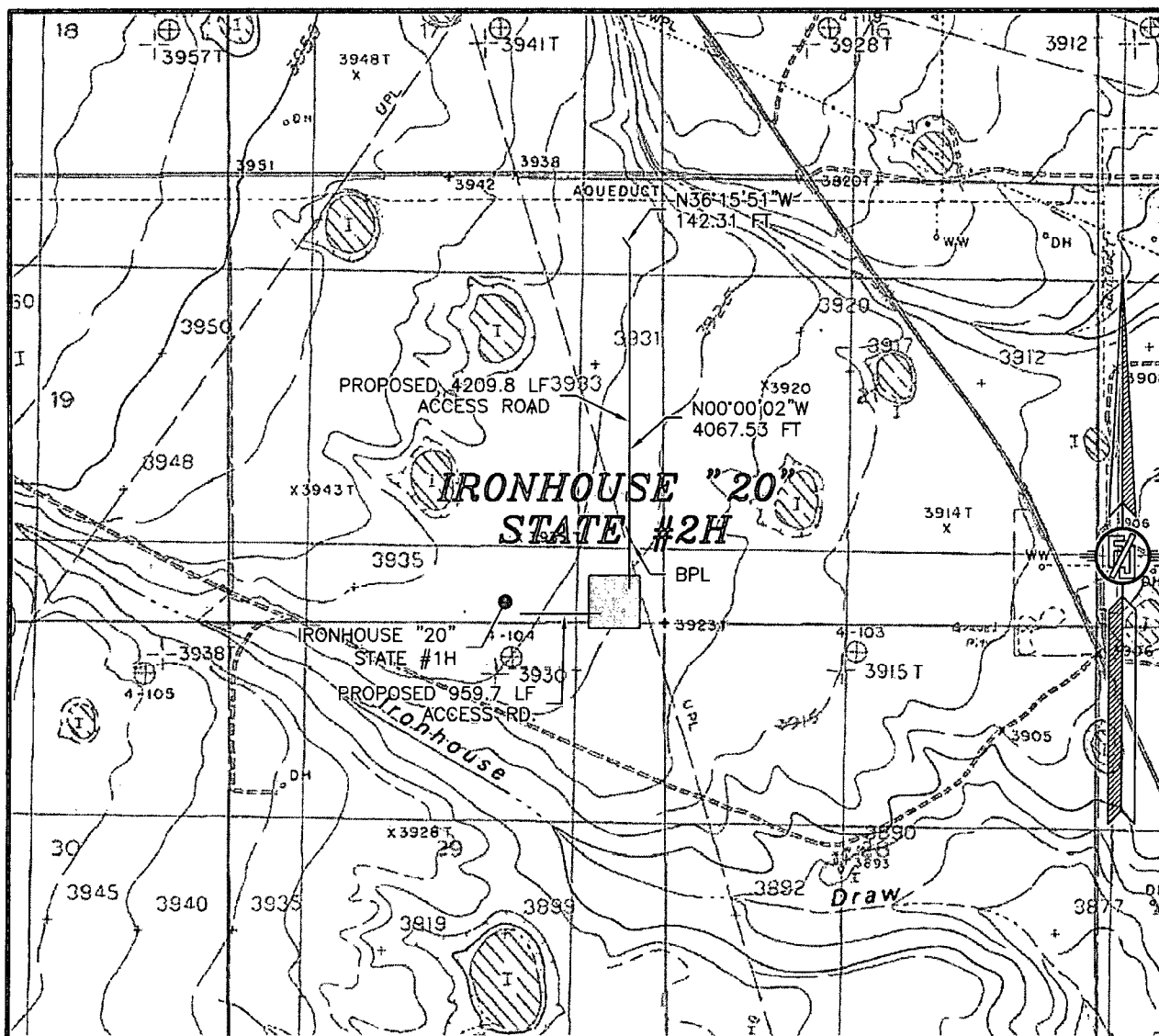
OCTOBER 27, 2012

SURVEY NO. 1338

MADRON SURVEYING, INC. 301 SOUTH CANAL (575) 234-3341 CARLSBAD, NEW MEXICO

DEC 4 9 2012

SECTION 20, TOWNSHIP 18 SOUTH, RANGE 35 EAST, N.M.P.M.
LEA COUNTY, STATE OF NEW MEXICO
LOCATION VERIFICATION MAP



USGS QUAD MAP:
IRONHOUSE DRAW

NOT TO SCALE

DEVON ENERGY PRODUCTION COMPANY, L.P.

IRONHOUSE "20" STATE #2H

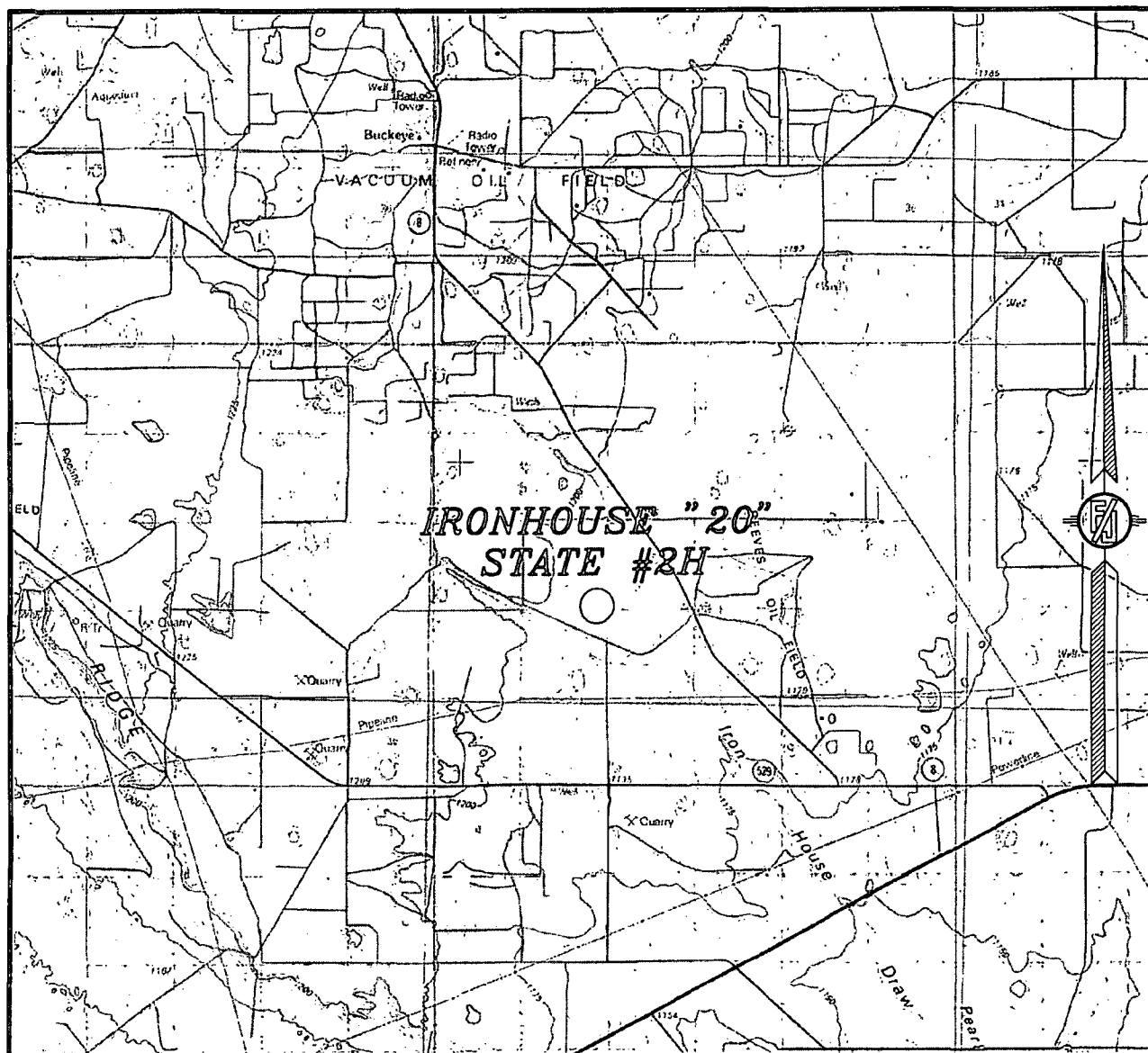
LOCATED 200 FT. FROM THE SOUTH LINE
AND 660 FT. FROM THE EAST LINE OF
SECTION 20, TOWNSHIP 18 SOUTH,
RANGE 35 EAST, N.M.P.M.
LEA COUNTY, STATE OF NEW MEXICO

OCTOBER 27, 2012

SURVEY NO. 1338

MADRON SURVEYING, INC. 301 SOUTH CANAL (575) 234-3341 CARLSBAD, NEW MEXICO

SECTION 20, TOWNSHIP 18 SOUTH, RANGE 35 EAST, N.M.P.M.
LEA COUNTY, STATE OF NEW MEXICO
VICINITY MAP



NOT TO SCALE

DEVON ENERGY PRODUCTION COMPANY, L.P.

IRONHOUSE "20" STATE #2H

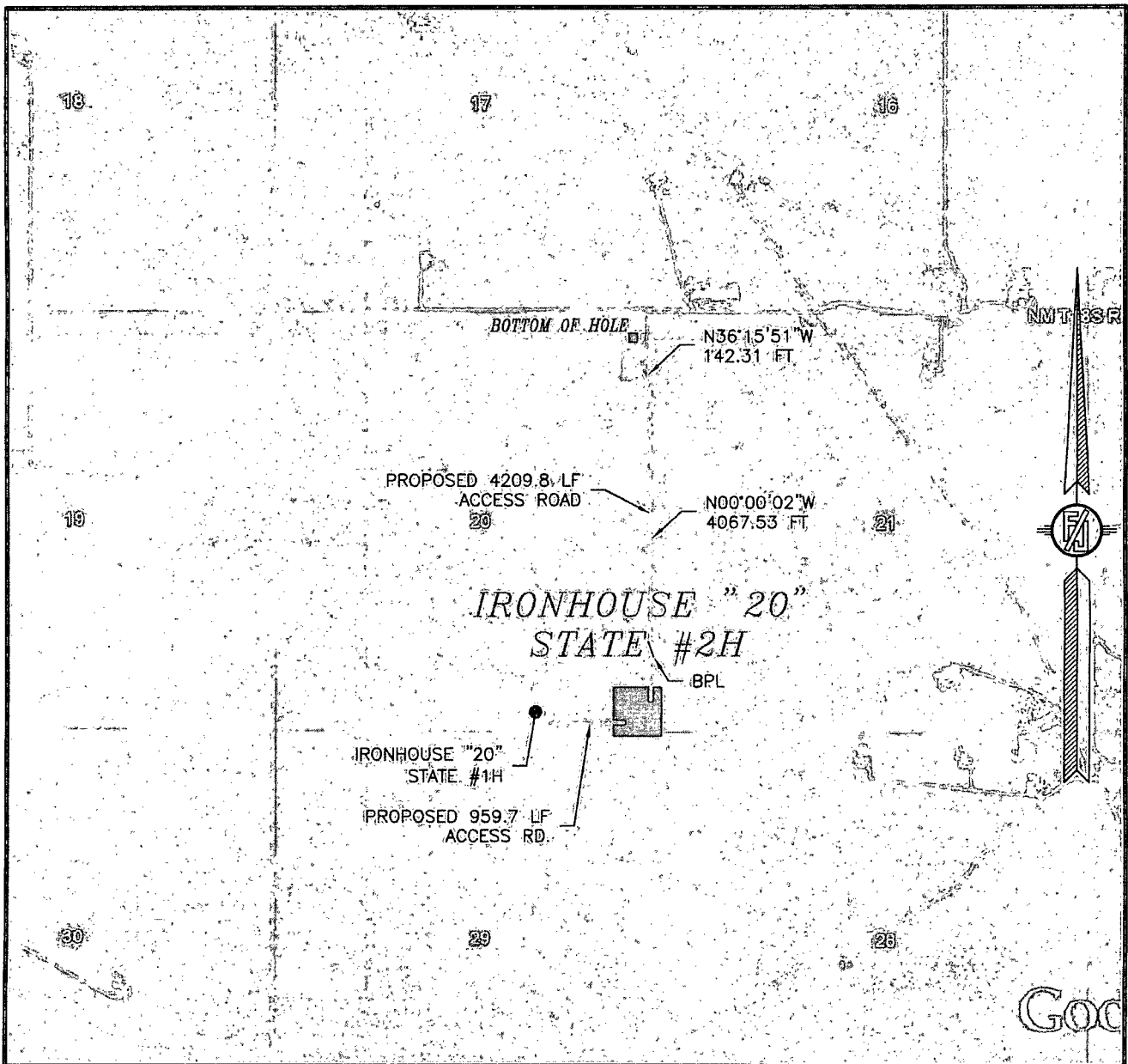
LOCATED 200 FT. FROM THE SOUTH LINE
AND 660 FT. FROM THE EAST LINE OF
SECTION 20, TOWNSHIP 18 SOUTH,
RANGE 35 EAST, N.M.P.M.
LEA COUNTY, STATE OF NEW MEXICO

OCTOBER 27, 2012

SURVEY NO. 1338

MADRON SURVEYING, INC. 301 SOUTH CANAL (575) 234-3341 CARLSBAD, NEW MEXICO

SECTION 20, TOWNSHIP 18 SOUTH, RANGE 35 EAST, N.M.P.M.
LEA COUNTY, STATE OF NEW MEXICO
AERIAL PHOTO



NOT TO SCALE
AERIAL PHOTO:
GOOGLE EARTH
MARCH 2012

DEVON ENERGY PRODUCTION COMPANY, L.P.

IRONHOUSE "20" STATE #2H

LOCATED 200 FT. FROM THE SOUTH LINE
AND 660 FT. FROM THE EAST LINE OF
SECTION 20, TOWNSHIP 18 SOUTH,
RANGE 35 EAST, N.M.P.M.
LEA COUNTY, STATE OF NEW MEXICO

OCTOBER 27, 2012

SURVEY NO. 1338

MADRON SURVEYING, INC. 301 SOUTH CANAL (575) 234-3341 CARLSBAD, NEW MEXICO