

District I
1625 N. French Dr., Hobbs, NM 88240
Phone: (575) 393-6161 Fax: (575) 393-0720

District II
811 S. First St., Artesia, NM 88210
Phone: (575) 748-1283 Fax: (575) 748-9720

District III
1000 Rio Brazos Road, Aztec, NM 87410
Phone: (505) 334-6178 Fax: (505) 334-6170

District IV
1220 S. St. Francis Dr., Santa Fe, NM 87505
Phone: (505) 476-3460 Fax: (505) 476-3462

State of New Mexico
Energy Minerals and Natural Resources
Oil Conservation Division
1220 South St. Francis Dr.
Santa Fe, NM 87505

Form C-101
Revised November 14, 2012

☐ AMENDED REPORT

RECEIVED

APPLICATION FOR PERMIT TO DRILL, RE-ENTER, DEEPEN, PLUGBACK, OR ADD A ZONE

¹ Operator Name and Address COG Operating LLC 2208 West Main Street Artesia, NM 88210		² OGRID Number 229137
³ Property Code 39577		⁴ APL Number 30-025-40890
⁵ Property Name Gunner 16 State SWD		⁶ Well No 1

7. Surface Location

UL - Lot	Section	Township	Range	Lot Idn	Feet from	N/S Line	Feet From	E/W Line	County
D	16	16S	34E		330	North	330	West	Lea

8. Proposed Bottom Hole Location

UL - Lot	Section	Township	Range	Lot Idn	Feet from	N/S Line	Feet From	E/W Line	County

9. Pool Information

¹⁰ SWD: Delaware Bell Canyon - Cherry Canyon	¹¹ Pool Name Bell Canyon - Cherry Canyon	¹² Pool Code -96100 96802
--	--	---

Additional Well Information

¹³ Work Type New Well	¹⁴ Well Type SWD	¹⁵ Cable/Rotary	¹⁶ Lease Type State	¹⁷ Ground Level Elevation 3342.2
¹⁸ Multiple N	¹⁹ Proposed Depth 7000	²⁰ Formation Delaware	²¹ Contractor	²² Spud Date 12/18/2012
²³ Depth to Ground water		²⁴ Distance from nearest fresh water well		²⁵ Distance to nearest surface water

21. Proposed Casing and Cement Program

Type	Hole Size	Casing Size	Casing Weight/ft	Setting Depth	Sacks of Cement	Estimated TOC
Surface	17.5	13.375	54.5	600		
Intrmd	12.25	9.625	40	5280	1450	
Open Hole	8.75	7	26	7000	400	4780

Casing/Cement Program: Additional Comments

Plan to drill a 17-1/2" hole to 875' with Fresh Water. Run 13-3/8", 54.5#, J-55 csg and cmt to surface. Drill 12-1/4" hole to 5280' with Brine, and run 9-5/8", 40#, J55/N80 and cement to surface in 1 stage. Drill 8-3/4" hole to 7000' with cut-brine and run 7", 26#, J55 and tie back cement 500' into previous casing string.

22. Proposed Blowout Prevention Program

²⁶ Type Double Ram	²⁷ Working Pressure 3000	²⁸ Test Pressure 3000	²⁹ Manufacturer Cameron
----------------------------------	--	-------------------------------------	---------------------------------------

²³ I hereby certify that the information given above is true and complete to the best of my knowledge and belief.

I further certify that I have complied with 19.15.14.9 (A) NMAC ☐ and/or 19.15.14.9 (B) NMAC ☐, if applicable.

Signature: *Mayte Reyes*

Printed name: Mayte Reyes

Title: Production Analyst

E-mail Address: mreyes1@concho.com

Date: 12/13/2012

Phone: 575-748-6945

OIL CONSERVATION DIVISION

Approved By:

Title:

Petroleum Engineer

Approved Date:

Expiration Date:

DEC 19 2012

Conditions of Approval Attached

DEC 20 2012

HOBBS OCD

DEC 18 2012

DISTRICT I

1625 N. FRENCH DR., HOBBS, NM 88240

State of New Mexico

Energy, Minerals and Natural Resources Department

Form C-102

Revised October 12, 2010

DISTRICT II

1301 W. GRAND AVENUE, ARTESIA, NM 88210

RECEIVED

OIL CONSERVATION DIVISION

Submit to Appropriate District Office

State Lease - 4 Copies

Fee Lease - 3 Copies

DISTRICT III

1000 RIO BRAZOS RD., AZTEC, NM 87410

11885 SOUTH ST. FRANCIS DR.

Santa Fe, New Mexico 87505

DISTRICT IV

11885 S. ST. FRANCIS DR., SANTA FE, NM 87505

WELL LOCATION AND ACREAGE DEDICATION PLAT

☐ AMENDED REPORT

API Number 30-025-40890	Pool Code 96802	Pool Name SWD; Bell Canyon - Cherry Canyon
Property Code 39597	Property Name GUNNER 16 STATE SWD	Well Number 1H
OGRID No. 229137	Operator Name COG OPERATING, LLC	Elevation 3342.2'

Surface Location

UL or lot No.	Section	Township	Range	Lot Idn	Feet from the	North/South line	Feet from the	East/West line	County
D	16	26-S	34-E		330	NORTH	330	WEST	LEA

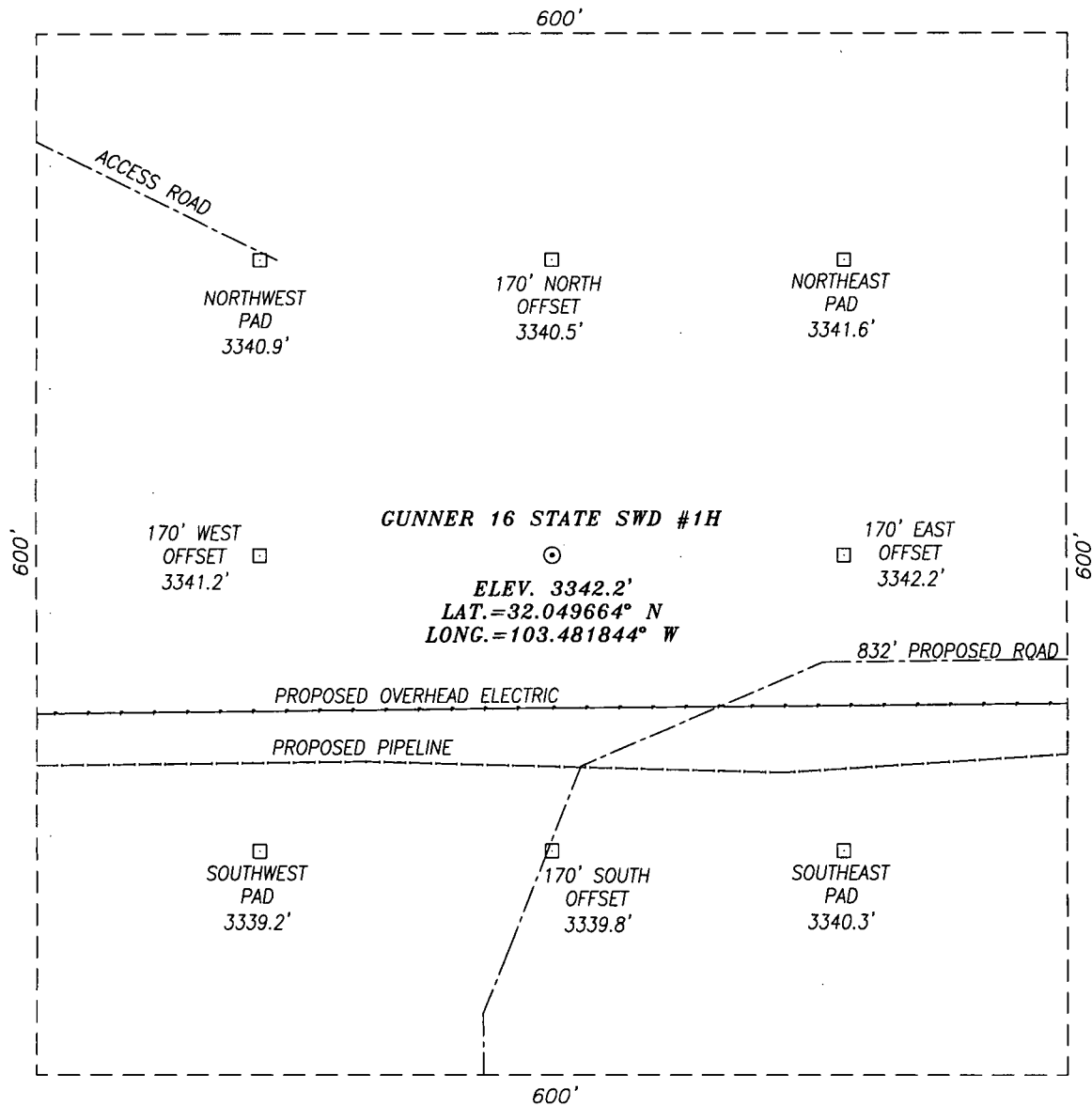
Bottom Hole Location If Different From Surface

UL or lot No.	Section	Township	Range	Lot Idn	Feet from the	North/South line	Feet from the	East/West line	County
Dedicated Acres	Joint or Infill	Consolidation Code	Order No.	SWD-1367					

NO ALLOWABLE WILL BE ASSIGNED TO THIS COMPLETION UNTIL ALL INTERESTS HAVE BEEN CONSOLIDATED
OR A NON-STANDARD UNIT HAS BEEN APPROVED BY THE DIVISION

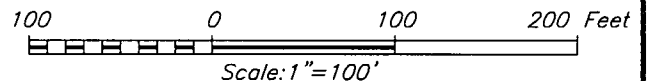
	<p>NAD 27 SURFACE LOCATION Y=382833.3 N X=763818.9 E LAT.=32.049664° N LONG.=103.481844° W</p>				<p>OPERATOR CERTIFICATION</p> <p>I hereby certify that the information herein is true and complete to the best of my knowledge and belief, and that this organization either owns a working interest or unleased mineral interest in the land including the proposed bottom hole location or has a right to drill this well at this location pursuant to a contract with an owner of such mineral or working interest, or to a voluntary pooling agreement or a compulsory pooling order heretofore entered by the division.</p> <p>Signature _____ Date _____</p> <p>Printed Name _____</p>
	<p>SURVEYOR CERTIFICATION</p> <p>I hereby certify that the well location shown on this plat was plotted from field notes of actual surveys made by me or under my supervision, and that the same is true and correct to the best of my belief.</p> <p>OCTOBER 29, 2012</p> <p>Date Surveyed _____</p> <p>Signature & Seal of Professional Surveyor</p>				
	<p>Chad Hargrow 11/30/12</p>				<p>Certificate No. CHAD HARGROW 17777</p> <p>W.O. # 12-183 2012-037</p>

SECTION 16, TOWNSHIP 26 SOUTH, RANGE 34 EAST, N.M.P.M.,
LEA COUNTY NEW MEXICO



DIRECTIONS TO LOCATION:

FROM THE INTERSECTION OF ST. HWY. 128 AND BATTLE AXE RD (CR-2).
GO SOUTH WITH MEANDERING BATTLE AXE RD. APPROX. 13.1 MILES.
TURN LEFT AND HEAD EAST APPROX. 2.4 MILES. THEN TURN RIGHT AND
GO SOUTH APPROX. 0.8 MILES. TURN LEFT ONTO CALICHE LEASE ROAD
AND HEAD EAST APPROX. 0.8 MILES TO STAKED GUNNER FEDERAL #7
FOLLOW PROPOSED ROAD FOR APPROX. 0.8 MILES AND WELL IS 1000
FEET SOUTH.



HARCROW SURVEYING
1107 WATSON, ARTESIA N.M. 88210
PH: (575) 513-2570
FAX: (575) 746-2808
EST. 2007



COG OPERATING, LLC

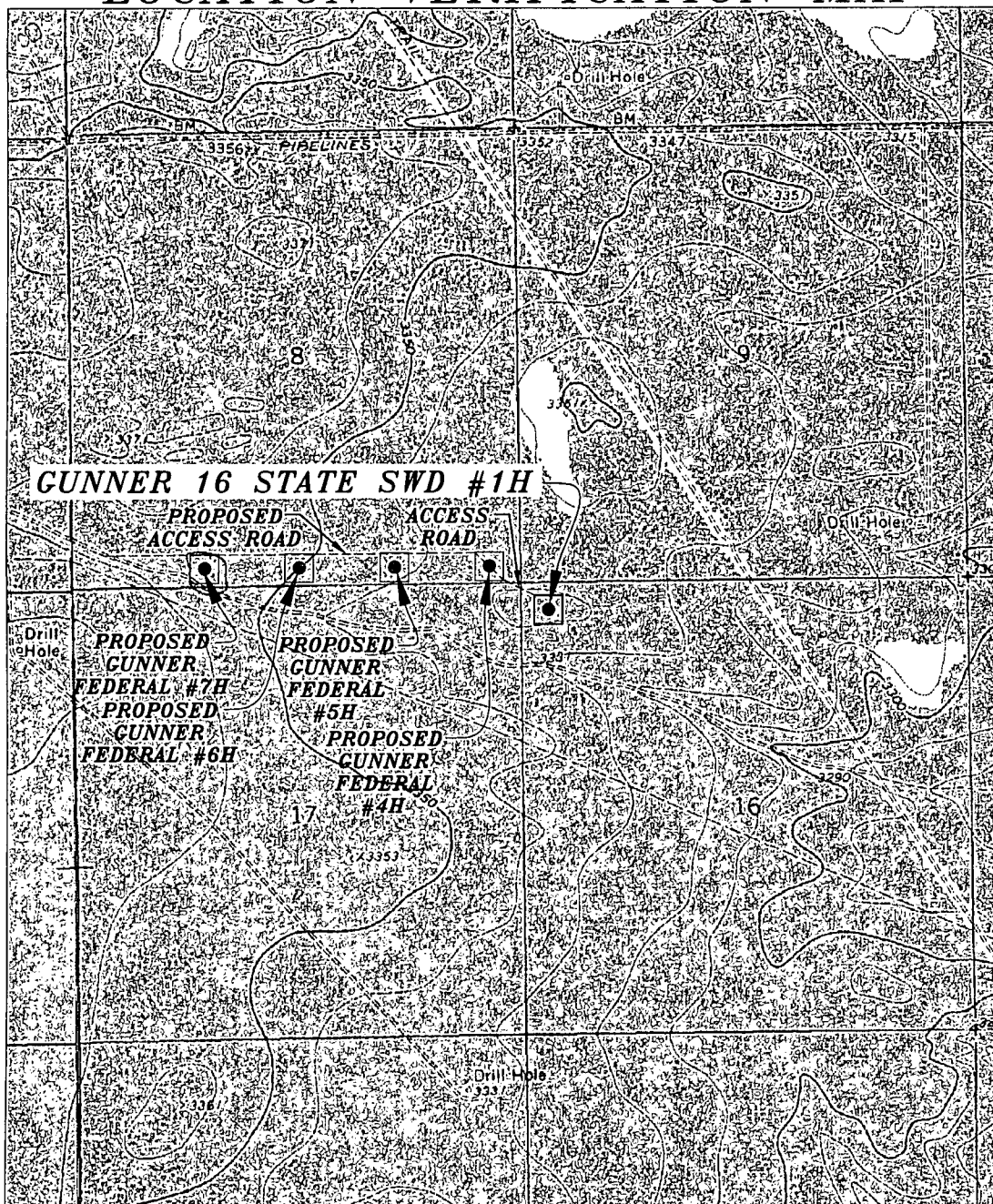
GUNNER 16 STATE SWD #1H WELL
LOCATED 330 FEET FROM THE NORTH LINE
AND 330 FEET FROM THE WEST LINE OF SECTION 16,
TOWNSHIP 26 SOUTH, RANGE 34 EAST, N.M.P.M.,
LEA COUNTY, NEW MEXICO

SURVEY DATE: OCTOBER 29, 2012 PAGE: 1 OF 1

DRAFTING DATE: NOVEMBER 29, 2012

APPROVED BY: CH DRAWN BY: DDSI FILE: 12-183

LOCATION VERIFICATION MAP



SCALE: 1" = 2000'

CONTOUR INTERVAL: 10'

SEC. 16 TWP. 26-S RGE. 34-E
 SURVEY N.M.P.M.
 COUNTY LEA STATE NEW MEXICO
 DESCRIPTION 330' FNL & 330' FWL
 ELEVATION 3342'
 OPERATOR COG OPERATING, LLC
 LEASE GUNNER 16 STATE SWD
 U.S.G.S. TOPOGRAPHIC MAP
 ANDREWS PLACE, N.M.

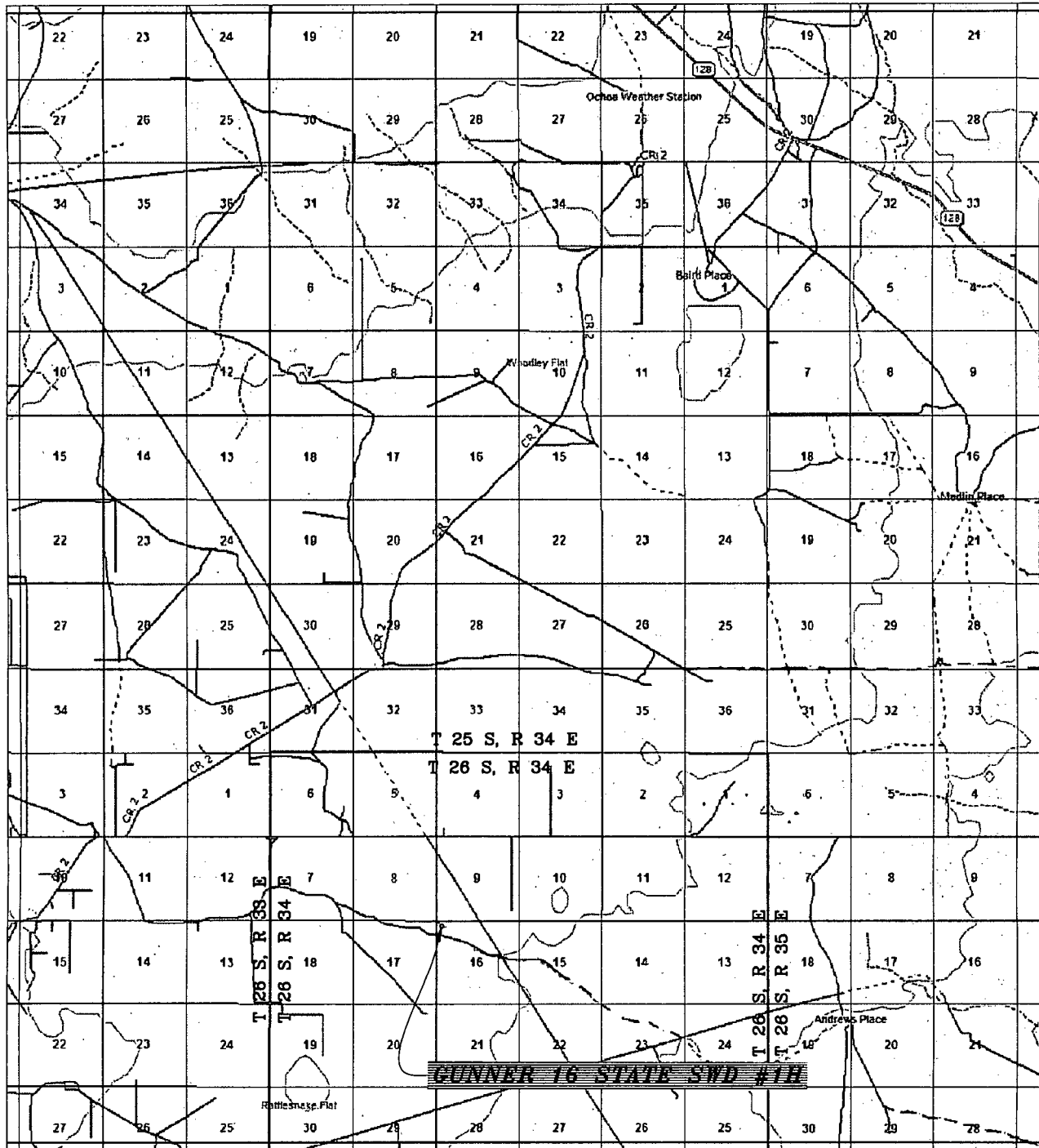
HARCROW SURVEYING
 1107 WATSON, ARTESIA N.M. 88210
 PH: (575) 513-2570
 FAX: (575) 746-2808
 EST. 2007



COG OPERATING, LLC

SURVEY DATE: OCT. 29, 2012	PAGE: 1 OF 1
DRAFTING DATE: NOV. 29, 2012	
APPROVED BY: CH	DRAWN BY: DDSI FILE: 12-183

VICINITY MAP



SEC. 16 TWP. 26-S RGE. 34-E
 SURVEY N.M.P.M.
 COUNTY LEA STATE NEW MEXICO
 DESCRIPTION 330' FNL & 330' FWL
 ELEVATION 3342'
 OPERATOR COG OPERATING, LLC
 LEASE GUNNER 16 STATE SWD

SCALE: 1" = 1 MILE

HARCROW SURVEYING
 1107 WATSON, ARTESIA N.M. 88210
 PH: (575) 513-2570
 FAX: (575) 746-2808
 EST. 2007



COG OPERATING, LLC

SURVEY DATE: OCT. 29, 2012	PAGE: 1 OF 1
DRAFTING DATE: NOV. 29, 2012	
APPROVED BY: CH	DRAWN BY: DDSI FILE: 12-183