

District I
1625 N. French Dr., Hobbs, NM 88240
Phone: (575) 393-6161 Fax: (575) 393-6162
District II
811 S. First St., Artesia, NM 88210
Phone: (575) 748-1283 Fax: (575) 748-9720
District III
1000 Rio Brazos Road, Aztec, NM 87410
Phone: (505) 334-6178 Fax: (505) 334-6170
District IV
1220 S. St. Francis Dr., Santa Fe, NM 87505
Phone: (505) 476-3460 Fax: (505) 476-3462

HOBBS OGD

DEC 06 2012

RECEIVED

State of New Mexico
Energy, Minerals & Natural Resources Department
OIL CONSERVATION DIVISION
1220 South St. Francis Dr.
Santa Fe, NM 87505

Form C-102
Revised August 1, 2011
Submit one copy to appropriate
District Office

☐ AMENDED REPORT

WELL LOCATION AND ACREAGE DEDICATION PLAT

¹ API Number 30-025-40864	² Pool Code 96674	³ Pool Name Triple X; Bone Spring, West
⁴ Property Code 8127	⁵ Property Name JACKSON UNIT	⁶ Well Number 10 H
⁷ OGRID No. 15363	⁸ Operator Name MURCHISON OIL & GAS, INC.	⁹ Elevation 3602.8

¹⁰ Surface Location

UL or lot no.	Section	Township	Range	Lot Idn	Feet from the	North/South line	Feet from the	East/West line	County
D	16	24 S	33 E		200	NORTH	825	WEST	LEA

¹¹ Bottom Hole Location If Different From Surface

UL or lot no.	Section	Township	Range	Lot Idn	Feet from the	North/South line	Feet from the	East/West line	County
M	16	24 S	33 E		330	SOUTH	660	WEST	LEA

¹² Dedicated Acres 160	¹³ Joint or Infill	¹⁴ Consolidation Code	¹⁵ Order No.
--------------------------------------	-------------------------------	----------------------------------	-------------------------

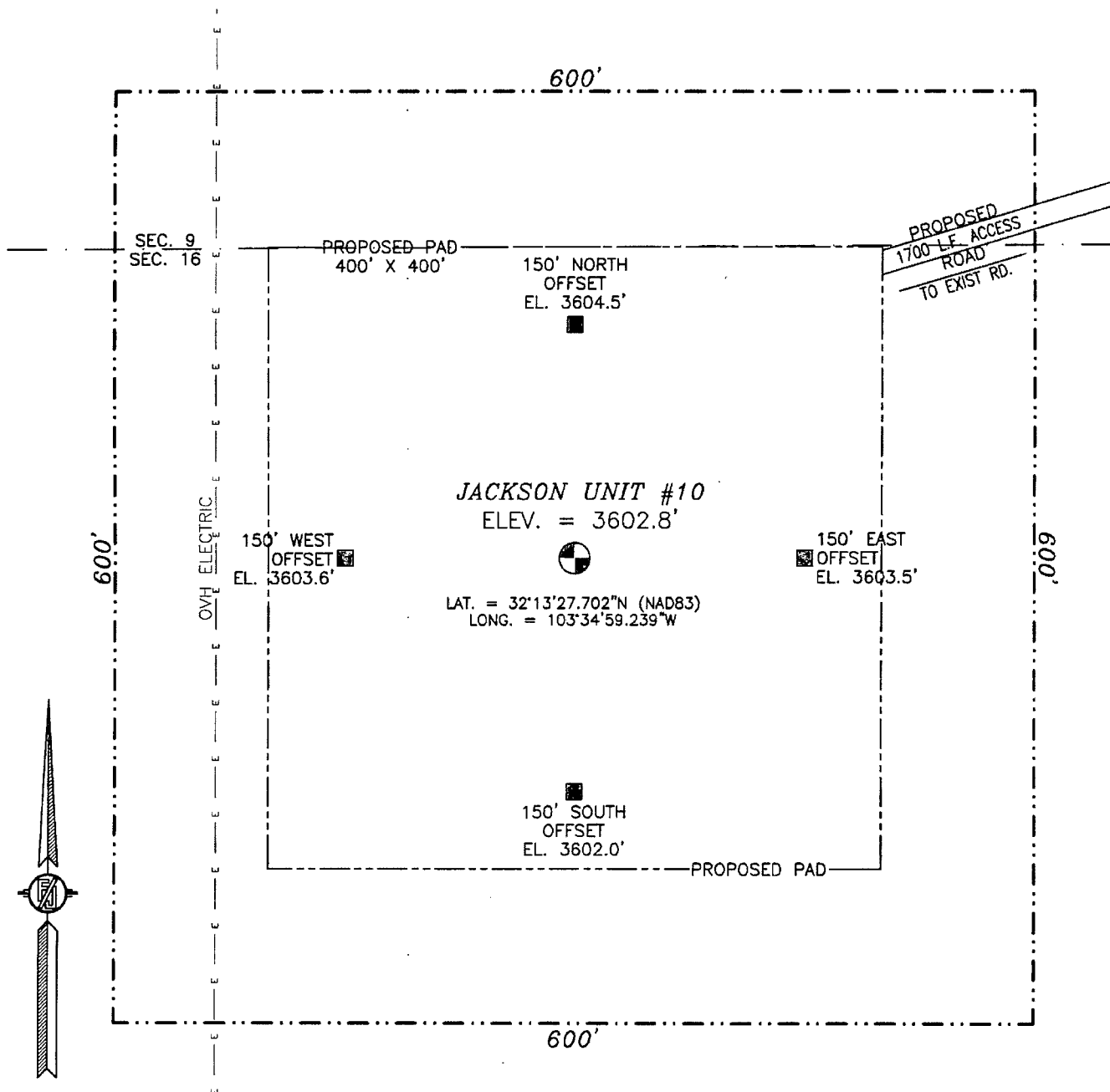
No allowable will be assigned to this completion until all interests have been consolidated or a non-standard unit has been approved by the division.

	<p>¹⁷ OPERATOR CERTIFICATION</p> <p>I hereby certify that the information contained herein is true and complete to the best of my knowledge and belief, and that this organization either owns a working interest or unleased mineral interest in the land including the proposed bottom hole location or has a right to drill this well at this location pursuant to a contract with an owner of such a mineral or working interest, or to a voluntary pooling agreement or a compulsory pooling order heretofore entered by this division.</p> <p><i>Michael S. Daugherty</i> 12/4/12 Signature Date</p> <p>Michael S. Daugherty, COO Printed Name</p> <p>mdaugherty@jdmii.com E-mail Address</p>
	<p>¹⁸ SURVEYOR CERTIFICATION</p> <p>I hereby certify that the well location shown on this plat was plotted from field notes of actual surveys made by me or under my supervision, and that the same is true and correct to the best of my belief.</p> <p>NOVEMBER 28, 2012 Date of Survey</p> <p><i>Joseph J. Pineda</i> Signature and Seal of Professional Surveyor</p> <p>Certificate Number: 1414 SURVEY NO. 1414</p>

* Amended

DEC 20 2012

SECTION 16, TOWNSHIP 24 SOUTH, RANGE 33 EAST, N.M.P.M.
LEA COUNTY, STATE OF NEW MEXICO



010 50 100 200

SCALE 1" = 100'

DIRECTIONS TO LOCATION

FROM THE INTERSECTION OF BRININSTOOL ROAD AND NM HIGHWAY 128 (JAL HIGHWAY) BETWEEN MM 28 & 29 ON HIGHWAY 128 GO NORTH ON BRININSTOOL ROAD A CALICHE RD. 1.1 MILES TO A CALICHE ROAD ON LEFT, GO WEST OVER CATTLE GUARD W/GATE 0.5 MILES JUST PAST ENRON 9 STATE COM #1 WELL SITE TO A TURN TO THE RIGHT AT TURN FOLLOW LATH 1700FT. WEST TO SITE.

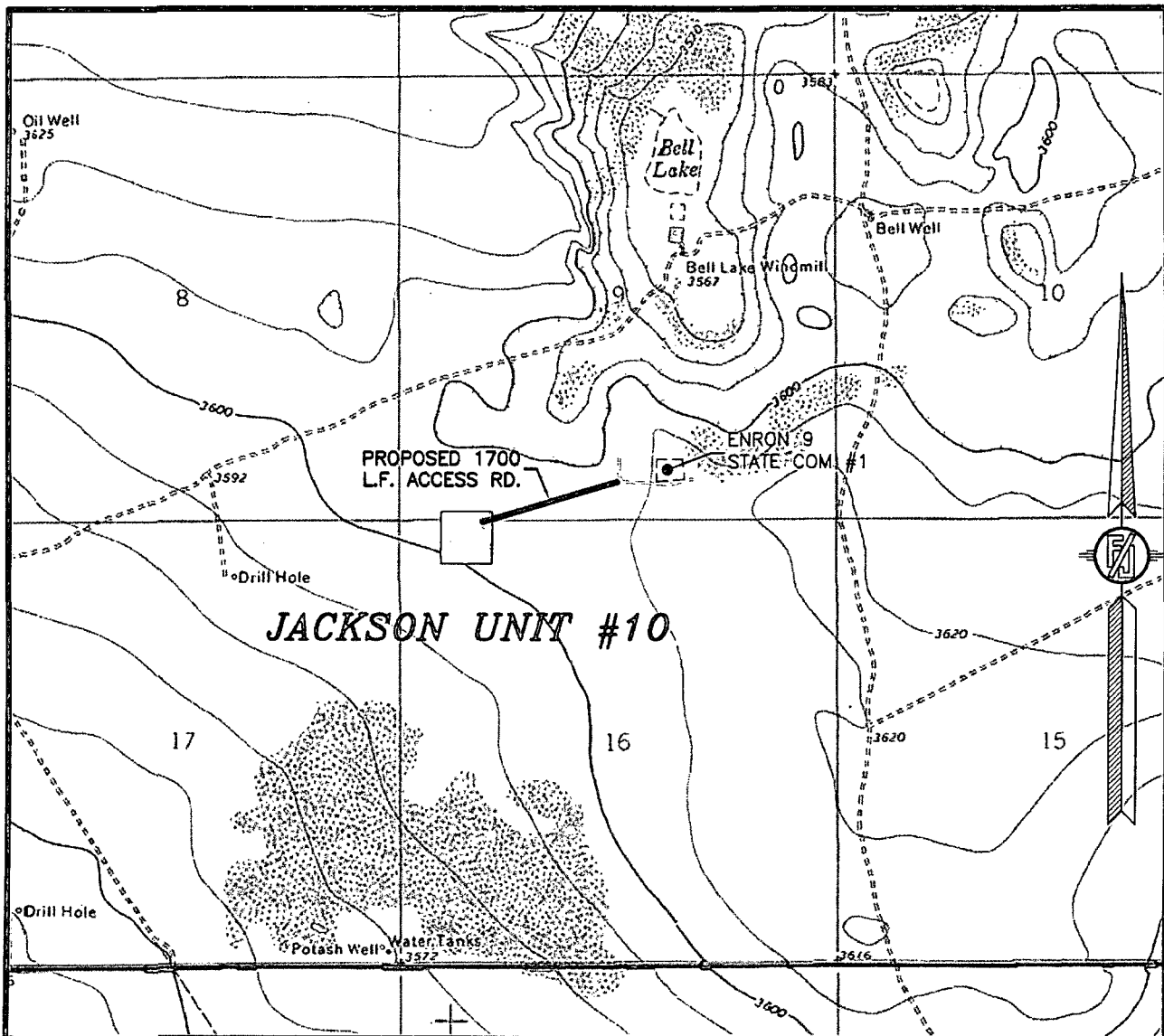
MURCHISON OIL & GAS, INC.
JACKSON UNIT #10
LOCATED 200 FT. FROM THE NORTH LINE
AND 825 FT. FROM THE WEST LINE OF
SECTION 16, TOWNSHIP 24 SOUTH,
RANGE 33 EAST, N.M.P.M.
LEA COUNTY, STATE OF NEW MEXICO

NOVEMBER 28, 2012

SURVEY NO. 1414

MADRON SURVEYING, INC. 301 SOUTH CANAL CARLSBAD, NEW MEXICO
(575) 234-3341

SECTION 16, TOWNSHIP 24 SOUTH, RANGE 33 EAST, N.M.P.M.
LEA COUNTY, STATE OF NEW MEXICO
LOCATION VERIFICATION MAP



USGS QUAD MAP:
BELL LAKE

NOT TO SCALE

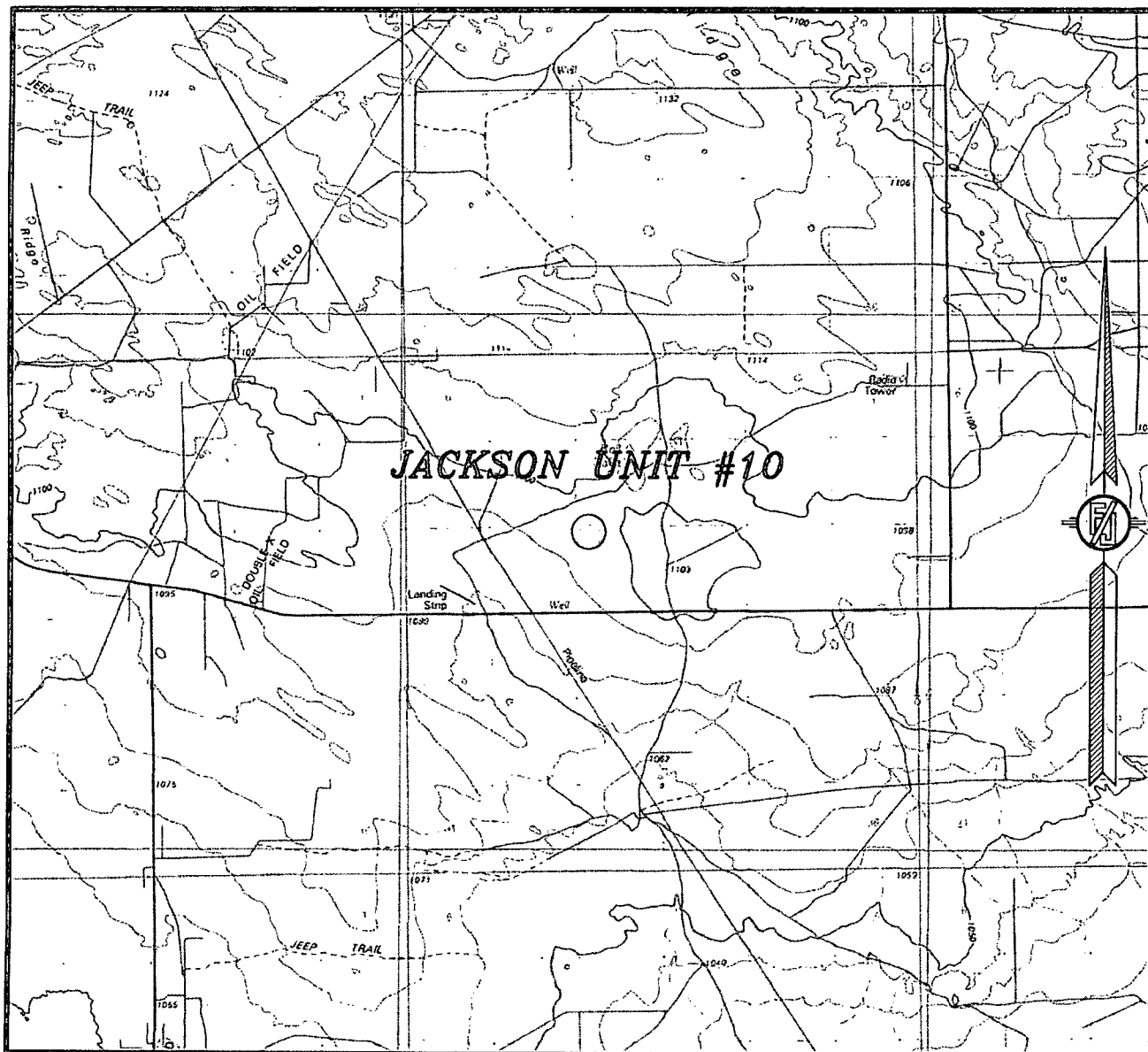
MURCHISON OIL & GAS, INC.
JACKSON UNIT #10
LOCATED 200 FT. FROM THE NORTH LINE
AND 825 FT. FROM THE WEST LINE OF
SECTION 16, TOWNSHIP 24 SOUTH,
RANGE 33 EAST, N.M.P.M.
LEA COUNTY, STATE OF NEW MEXICO

NOVEMBER 28, 2012

SURVEY NO. 1414

MADRON SURVEYING, INC. 301 SOUTH CANAL (575) 234-3341 CARLSBAD, NEW MEXICO

SECTION 16, TOWNSHIP 24 SOUTH, RANGE 33 EAST, N.M.P.M.
LEA COUNTY, STATE OF NEW MEXICO
VICINITY MAP



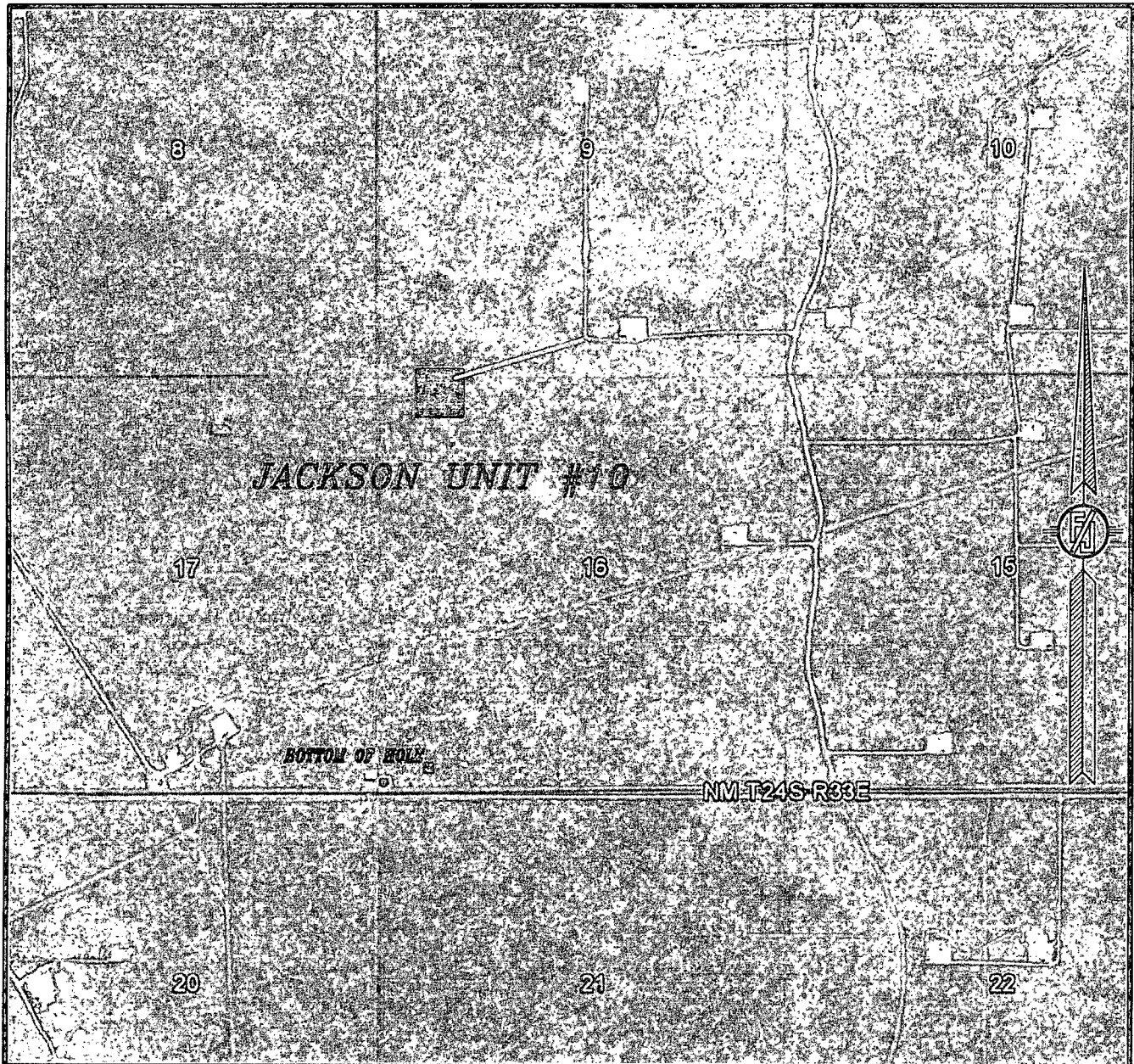
NOT TO SCALE

MURCHISON OIL & GAS, INC.
JACKSON UNIT #10
LOCATED 200 FT. FROM THE NORTH LINE
AND 825 FT. FROM THE WEST LINE OF
SECTION 16, TOWNSHIP 24 SOUTH,
RANGE 33 EAST, N.M.P.M.
LEA COUNTY, STATE OF NEW MEXICO

NOVEMBER 28, 2012

MADRON SURVEYING, INC. 301 SOUTH CANAL (575) 234-3341 CARLSBAD, NEW MEXICO SURVEY NO. 1414

SECTION 16, TOWNSHIP 24 SOUTH, RANGE 33 EAST, N.M.P.M.
LEA COUNTY, STATE OF NEW MEXICO
AERIAL PHOTO



NOT TO SCALE
AERIAL PHOTO:
GOOGLE EARTH
MARCH 2012

MURCHISON OIL & GAS, INC.
JACKSON UNIT #10
LOCATED 200 FT. FROM THE NORTH LINE
AND 825 FT. FROM THE WEST LINE OF
SECTION 16, TOWNSHIP 24 SOUTH,
RANGE 33 EAST, N.M.P.M.
LEA COUNTY, STATE OF NEW MEXICO

NOVEMBER 28, 2012

SURVEY NO. 1414

MADRON SURVEYING, INC. 301 SOUTH CANAL (575) 234-3341 CARLSBAD, NEW MEXICO



MURCHISON OIL & GAS, INC.

Certified Article Number

7196 9008 9040 1351 8890

SENDERS RECORD

VIA CERTIFIED MAIL

December 4, 2012

State of New Mexico
Oil Conservation Division
District I
1625 N. French Dr.
Hobbs, New Mexico 88240

HOBBS OCD

DEC 06 2012

RECEIVED

**RE: Jackson Unit 10H
API # 30-025-40864
Lea County, NM**

To Whom It May Concern:

Enclosed please find Form C-103 requesting permission to change the surface and bottom hole locations on the permit of the referenced well.

If you need additional information, please contact me at ccottrell@jdmii.com or 972-931-0700 ext. 109.

Very truly yours,

MURCHISON OIL & GAS, INC.

Cindy Cottrell
Regulatory Coordinator

Enclosures