

ATS-12-1115

HOBBS OCD

Form 3160-3.  
(March 2012)

DEC 20 2012  
OCD Hobbs  
RECEIVED

FORM APPROVED  
OMB No. 1004-0137  
Expires October 31, 2014

UNITED STATES  
DEPARTMENT OF THE INTERIOR  
BUREAU OF LAND MANAGEMENT

APPLICATION FOR PERMIT TO DRILL OR REENTER

1a. Type of work: <input checked="" type="checkbox"/> DRILL <input type="checkbox"/> REENTER		5. Lease Serial No. NM LC 060329
1b. Type of Well: <input checked="" type="checkbox"/> Oil Well <input type="checkbox"/> Gas Well <input type="checkbox"/> Other <input checked="" type="checkbox"/> Single Zone <input type="checkbox"/> Multiple Zone		6. If Indian, Allottee or Tribe Name N/A
2. Name of Operator ConocoPhillips Company		7. If Unit or CA Agreement, Name and No. N/A
3a. Address P.O. Box 51810 Midland, Texas 79710-1810	3b. Phone No. (include area code) 432-688-6913	8. Lease Name and Well No. Emerald Federal #6 <38742>
4. Location of Well (Report location clearly and in accordance with any State requirements. *) At surface UL H, Sec. 17, T17S, R32E; 1800' FNL, 990' FEL At proposed prod. zone UL H, Sec. 17, T17S, R32E; 1800' FNL, 990' FEL		9. API Well No. 30-025-40892
14. Distance in miles and direction from nearest town or post office* approximately 3.5 miles south of Maljamar, New Mexico		10. Field and Pool, or Exploratory Maljamar; Yeso West <44500>
15. Distance from proposed* location to nearest property or lease line, ft. (Also to nearest drig. unit line, if any) 990' FEL	16. No. of acres in lease 323.76	11. Sec., T. R. M. or Blk. and Survey or Area Sec. 17, T17S, R32E
17. Spacing Unit dedicated to this well 40 acres	18. Distance from proposed location* to nearest well, drilling, completed, applied for, on this lease, ft. 945'	12. County or Parish Lea
19. Proposed Depth 7022' MD/TVD	20. BLM/BIA Bond No. on file ES0085	13. State NM
21. Elevations (Show whether DF, KDB, RT, GL, etc.) 4030' GL	22. Approximate date work will start* 12/15/2012	23. Estimated duration 20 days

24. Attachments

The following, completed in accordance with the requirements of Onshore Oil and Gas Order No.1, must be attached to this form:

- Well plat certified by a registered surveyor.
- A Drilling Plan.
- A Surface Use Plan (if the location is on National Forest System Lands, the SUPO must be filed with the appropriate Forest Service Office).
- Bond to cover the operations unless covered by an existing bond on file (see Item 20 above).
- Operator certification
- Such other site specific information and/or plans as may be required by the BLM.

25. Signature <i>Susan B. Maunder</i>	Name (Printed/Typed) Susan B. Maunder	Date 8/10/12
Title Senior Regulatory Specialist		
Approved by (Signature) <i>/s/George MacDonell</i>	Name (Printed/Typed) <i>/s/George MacDonell</i>	Date DEC 18 2012
Title FIELD MANAGER	Office CARLSBAD FIELD OFFICE	

Application approval does not warrant or certify that the applicant holds legal or equitable title to those rights in the subject lease which would entitle the applicant to conduct operations thereon.

Conditions of approval, if any, are attached.

APPROVAL FOR TWO YEARS

Title 18 U.S.C. Section 1001 and Title 43 U.S.C. Section 1212, make it a crime for any person knowingly and willfully to make to any department or agency of the United States any false, fictitious or fraudulent statements or representations as to any matter within its jurisdiction.

(Continued on page 2)

\*(Instructions on page 2)

Roswell Controlled Water Basin

*Ka*  
*12/24/12*

Approval Subject to General Requirements  
& Special Stipulations Attached

SEE ATTACHED FOR  
CONDITIONS OF APPROVAL

JAN 08 2013

*dm*

Drilling Plan  
ConocoPhillips Company  
Maljamar, Yeso, west

Emerald Federal #6

Lea County, New Mexico

**1. Estimated tops of geological markers and estimated depths to water, oil, or gas formations:**

The ranges of depths for the formation tops, thicknesses, and planned Total Depths for all the wells to be drilled under this Master Drilling Plan are presented in the table below.

The datum for these depths is RKB (which is 13' above Ground Level).

Formations	Top Depths FT MD	Contents
Quaternary	Surface	Fresh Water
Rustler	787	Anhydrite
Salado (top of salt)	965	Salt
Tansill	1991	Gas, Oil and Water
Yates	2167	Gas, Oil and Water
Seven Rivers	2457	Gas, Oil and Water
Queen	3095	Gas, Oil and Water
Grayburg	3515	Gas, Oil and Water
San Andres	3895	Gas, Oil and Water
Glorieta	5362	Gas, Oil and Water
Paddock	5469	Gas, Oil and Water
Blinebry	5793	Gas, Oil and Water
Tubb	6822	Gas, Oil and Water
Deepest estimated perforation	6822	Deepest estimated perf. is ~ Top of Tubb
Total Depth (maximum)	7022	200' below deepest estimated perforation

All of the water bearing formations identified above will be protected by setting of the 8-5/8" surface casing 25' – 70' into the Rustler formation and circulating of cement from casing shoe to surface in accordance with the provisions of Onshore Oil and Gas Order No. 2 and New Mexico Oil Conservation Division Title 19.

The targeted oil and gas bearing formations identified above will be protected by setting of the 5-1/2" production casing 10' off bottom of TD and circulating of cement from casing shoe to surface in accordance with the provisions of Onshore Oil and Gas Order No. 2 and New Mexico Oil Conservation Division Title 19.

## 2. Proposed casing program:

Type	Hole Size (in)	Interval MD RKB (ft)		OD (inches)	Wt (lb/ft)	Gr	Conn	MIY (psi)	Col (psi)	Jt Str (klbs)	Safety Factors Calculated per ConocoPhillips Corporate Criteria		
		From	To								Burst DF	Collapse DF	Jt Str DF (Tension) Dry/Buoyant
Cond	20	0	40' – 85' (30' – 75' BGL)	16	0.5" wall	B	Line Pipe	N/A	N/A	N/A	NA	NA	NA
Alt. Cond	20	0	40' – 85' (30' – 75' BGL)	13-3/8	48#	H-40	PE	1730	740	N/A	NA	NA	NA
Surf	12-1/4	0	812' – 857'	8-5/8	24#	J-55	STC	2950	1370	244	2.68	5.57	1.40
Prod	7-7/8	0	6967' – 7012'	5-1/2	17#	L-80	LTC	7740	6290	338	1.15	2.02	1.40

The casing will be suitable for H<sub>2</sub>S Service.

The surface and production casing will be set approximately 10' off bottom and we will drill the hole with a 45' range uncertainty for casing set depth to fit the casing string so that the cementing head is positioned at the floor for the cement job.

The production casing will be set 155' to 200' below the deepest estimated perforation to provide rathole for the pumping completion and for the logs to get deep enough to log the interval of interest.

### Casing Design (Safety) Factors - BLM Criteria:

Type	Depth	Wt	MIY	Col	Jt Str	Drill Fluid	Burst	Collapse	Tensile-Dry	Tens-Bouy
Surface Casing	857	24	2950	1370	244000	8.5	7.79	3.62	11.86	13.63
Production Casing	7012	17	7740	6290	338000	10	2.12	1.73	2.84	3.35

### Casing Design (Safety) Factors – Additional ConocoPhillips Criteria:

ConocoPhillips casing design policy establishes Corporate Minimum Design Factors (see table below) and requires that service life load cases be considered and provided for in the casing design.

ConocoPhillips Corporate Criteria for Minimum Design Factors

	Burst	Collapse	Axial
Casing Design Factors	1.15	1.05	1.4

### Burst Design (Safety) Factors – COP Criteria

The maximum internal (burst) load on the Surface Casing occurs when the surface casing is tested to 1000 psi (pressured up to 1100 psi). The maximum internal (burst) load on the Production Casing occurs during the fracture stimulation where the maximum allowable working pressure (MAWP) is the pressure that would fit ConocoPhillips Corporate Criteria for Minimum Design Factors.

Surface Casing Burst Design Factor = Burst Rating / Maximum Pressure during Casing Pressure Test

Production Casing MAWP for the Fracture Stimulation = Minimum Internal Yield / Production Casing Burst Design Factor

#### Surface Casing Burst Design Factor:

Burst Design Factor (Casing Pressure Test) = 2950 psi / 1100 psi = 2.68

#### Production Casing Burst Design Factor:

MAWP for the Fracture Stimulation = 7740 psi / 1.15 = 6730

### Collapse Design (Safety) Factors – COP Criteria

The maximum collapse load on the Surface Casing occurs when the pressure is released after bumping the plug on the surface casing cement job. The maximum collapse load on the production casing occurs with the well is pumped off on production. We plan to cement the production casing to surface, and therefore the external pressure profile on the production casing should be equal to the pore pressure of the horizons on the outside of the casing which we estimate to be 8.55 ppg gradient.

Surface Casing Collapse Design Factor = Collapse Rating / (Cement Column Hydrostatic Pressure – Displacement Fluid Hydrostatic Pressure)

Production Casing Collapse Design Factor = Collapse Rating / Maximum Possible Pore Pressure

#### Surface Casing Collapse Design Factor:

Collapse Design Factor = 1370 psi / {[(300 ft x 0.052 x 14.8 ppg) + (557 ft x 0.052 x 13.6 ppg) - (857 ft x 0.052 x 8.5 ppg)]} = 5.57

Collapse Design Factor = 1370 psi / 246 psi = 5.57

#### Production Casing Collapse Design Factor:

Collapse Design Factor = 6290 psi / (8.55 ppg x 7012 ft) = 6290 psi / 3118 psi = 2.02

### **Axial Design (Safety) Factors – COP Criteria**

The maximum axial (tension) load occurs if casing were to get stuck and pulled on to try to get it unstuck.

Maximum Allowable Hookload = Joint Strength Rating / Axial Design Factor

Overpull Margin = Maximum Allowable Hook Load - Air Wt of the String

#### **Surface Casing (Ult. Tensile):**

Maximum Allowable Hookload = 244000 lbs / 1.4 = 174286 lbs

Overpull Margin = 174286 lbs - ( 857 ft x 24 lb/ft ) = 153718 lbs

#### **Production Casing (Ult. Tensile):**

Maximum Allowable Hookload = 338000 / 1.4 = 241429 lbs

Overpull Margin = 241429 lbs - ( 7012 ft x 17 lb/ft ) = 122225 lbs

### **3. Proposed cementing program:**

#### **16" or 13-3/8" Conductor:**

Cement to surface with rathole mix, ready mix or Class C Neat cement.

(Note: The gravel used in the cement is not to exceed 3/8" diameter)

TOC at surface.

#### **8-5/8" Surface Casing & Cementing Program:** 8-5/8" 24# J-55 STC

The intention for the cementing program for the Surface Casing is to:

- Place the Tail Slurry from the casing shoe to 300' above the casing shoe,
- Bring the Lead Slurry to surface.

Spacer: 20 bbls Fresh Water

Slurry		Intervals Ft MD		Weight ppg	Sx	Vol Cuft	Additives	Yield ft <sup>3</sup> /sx
Lead	Class C	Surface	512' – 557'	13.6	350	595	4%Bentonite 2%CaCl2 .125%Polyflake 0.2% antifoam Excess =230% based on gauge hole volume	1.70
Tail	Class C	512' – 557'	812' – 857'	14.8	200	268	1% CaCl2 Excess = 100% based on gauge hole volume	1.34

Displacement: Fresh Water.

**Note: In accordance with the Pecos District Conditions of Approval, we will Wait on Cement (WOC) for a period of not less than 18 hrs after placement or until at least 500 psi compressive strength has been reached in both the Lead Slurry and Tail Slurry cements on the Surface Casing, whichever is greater.**

### **5-1/2" Production Casing & Cementing Program: 5-1/2" 17# L-80 LTC**

The intention for the cementing program for the Production Casing is to:

- Place the Tail Slurry from the casing shoe to a point approximately 200' above the top of the Paddock,
- Bring the Lead Slurry to surface.

Spacer: 20 bbls Fresh Water

Slurry		Intervals Ft MD		Weight ppg	Sx	Vol Cuft	Additives	Yield ft <sup>3</sup> /sx
Lead	50:50 Poz/C	Surface	5200'	11.8	1000	2640	10% Bentonite 8 lbs/sx Salt 0.4% Fluid loss additive 0.125% LCM if needed Excess = 220% or more if needed based on gauge hole volume	2.64
Tail	Class H	5200'	6967' – 7012'	16.4	650	696	0.2% Fluid loss additive 0.3% Dispersant 0.15% Retarder 0.2% Antifoam Excess = 100% or more if needed based on gauge hole volume	1.07

Displacement: Fresh Water with approximately 250 ppm gluteraldehyde biocide.

### **Proposal for Option to Adjust Production Casing Cement Volumes:**

The production casing cement volume presented above are estimates based on gauge 7-7/8" hole. We will adjust these volumes based on the caliper log data for each well and our trends for amount of cement returns to surface. Also, if no caliper log is available for any particular well, we would propose an option to possibly increase the production casing cement volume to account for any uncertainty in regard to the hole volume.

#### **4. Pressure Control Equipment:**

A 11" 3M system will be installed, used, maintained, and tested accordingly as described in Onshore Oil and Gas Order No. 2.

Our BOP equipment will be:

- Rotating Head
- Annular BOP, 11" 3M
- Blind Ram, 11" 3M
- Pipe Ram, 11" 3M

After nipping up, and every 30 days thereafter or whenever any seal subject to test pressure is broken followed by related repairs, blowout preventors will be pressure tested. BOP will be inspected and operated at least daily to insure good working order. All pressure and operating tests will be done by an independent service company and recorded on the daily drilling reports. BOP will be tested using a test plug to isolate BOP stack from casing. BOP test will include a low pressure test from 250 to 300 psi for a minimum of 10 minutes or until requirements of test are met, whichever is longer. Ram type preventers and associated equipment will be tested to the approved stack working pressure of 3000 psi isolated by test plug. Annular type preventers will be tested to 50 percent of rated working pressure, and therefore will be tested to 1500 psi. Pressure will be held for at least 10 minutes or until provisions of test are met, whichever is longer. Valve on casing head below test plug will be open during testing of BOP stack. BOP will comply with all provisions of Onshore Oil and Gas Order No. 2 as specified. **See Attached BOPE Schematic.**

## 5. Proposed Mud System

The mud systems that are proposed for use are as follows:

DEPTH	TYPE	Density ppg	FV sec/qt	API Fluid Loss cc/30 min	pH	Vol bbl
0 – Surface Casing Point	Fresh Water or Fresh Water Native Mud	8.5 – 9.0	28 – 40	N.C.	N.C.	120 – 160
Surface Casing Point to TD	Brine (Saturated NaCl <sub>2</sub> )	10	29	N.C.	10 – 11	400 – 750
Conversion to Mud at TD	Brine Based Mud (NaCl <sub>2</sub> )	10	34 – 45	5 – 10	10 – 11	0 – 750

Drilling mud containing H<sub>2</sub>S shall be degassed in accordance with API RP-49, item 5.14. The gases shall be piped into the flare system. Gas detection equipment and pit level flow monitoring equipment will be on location. ConocoPhillips Company will maintain sufficient mud and weighting material on location at all times.

### Proposal for Option to Not Mud Up at TD:

FW, Brine, and Mud volume presented above are estimates based on gauge 12-1/4" or 7-7/8" holes. We will adjust these volume based on hole conditions. Also, we propose an option to not mud up leaving only brine in the hole.

## 6. Logging, Coring, and Testing Program:

- a. No drill stem tests will be done
- b. Mud logging is planned for the production hole section.
- c. No whole cores are planned
- d. The open hole electrical logging program is planned to be as follows:
  - Total Depth to 2500': Resistivity, Density, and Gamma Ray
  - Total Depth to surface Casing Shoe: Caliper
  - Total Depth to surface, Gamma Ray and Neutron
  - Formation pressure data (XPT) on electric line if needed (optional)
  - Rotary Sidewall Cores on electric line if needed (optional)
  - BHC or Dipole Sonic if needed (optional)
  - Spectral Gamma Ray if needed (optional)

## 7. Abnormal Pressures and Temperatures:

- No abnormal pressures are expected to be encountered.
- Loss of circulation is a possibility in the horizons below the Top of Grayburg. We expect that normal Loss of Circulation Material will be successful in healing any such loss of circulation events.
  - The bottom hole pressure is expected to be 8.55 ppg gradient.
  - The expected Bottom Hole Temperature is 115 degrees F.
- The estimated H<sub>2</sub>S concentrations and ROE calculations for the gas in the zones to be penetrated are presented in the table below for the various producing horizons in this area:

FORMATION / ZONE	H <sub>2</sub> S (PPM)	Gas Rate (MCFD)	ROE 100 PPM	ROE 500 PPM
Grayburg / San Andres (from MCA)	14000	38	59	27
Yeso Group	400	433	34	15

ConocoPhillips will comply with the provisions of Oil and Gas Order # 6

**6. Anticipated starting date and duration of operations:**

Well pad and road constructions will begin as soon as all agency approvals are obtained. Anticipated date to drill these wells begin from late 2012 through the 2013 after receiving approval of the APD.

**Attachments:**

- Attachment # 1 ..... BOP and Choke Manifold Schematic – 3M System
- Attachment # 2 ..... Diagram of Choke Manifold Equipment

**Contact Information:**

Program prepared by:  
James Chen  
Drilling Engineer, ConocoPhillips Company  
Phone (832) 486-2184  
Cell (832) 768-1647  
Date: 17 July 2012

## **Request for Variance**

### **ConocoPhillips Company**

Lease Number: LC 060329

Well: Emerald Federal #6

Location: UL H, Sec. 17, T17S, R32E; 1800' FNL and 990' FEL

Date: 09-18-12

### **Request:**

ConocoPhillips Company respectfully requests a variance to install a flexible choke line instead of a straight choke line prescribed in the Onshore Order No. 2, III.A.2.b Minimum standards and enforcement provisions for choke manifold equipment. This request is made under the provision of Onshore Order No. 2, IV Variances from Minimum Standard. The rig to be used to drill this well is equipped with a flexible choke line if the requested variance is approved and determined that the proposed alternative meets the objectives of the applicable minimum standards.

### **Justifications:**

The applicability of the flexible choke line will reduce the number of target tees required to make up from the choke valve to the choke manifold. This configuration will facilitate ease of rig up and BOPE Testing.

### **Attachments:**

- Attachment # 1 Mill Certification
- Attachment # 2 Specification
- Attachment # 3 Certified & Signed Pressure Test from Manufacturer

### **Contact Information:**

Program prepared by:

James Chen


Drilling Engineer, ConocoPhillips Company

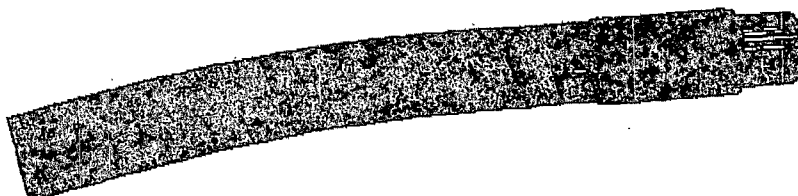
Phone (832) 486-2184

Cell (832) 768-1647

Date: 18 September 2012



		<b>PACKING SLIP</b>	
<b>Industrial Products USA, Ltd.</b> 2030 E 24th Street, Suite B Greeley, CO 80631 Phone: (970) 346-3751 Fax: (970) 351-3163 Toll Free: 1-866-771-9739			
CUSTOMER NO. 000070 SALESMAN NO. HSE		CUSTOMER NO. 000070 SALESMAN NO. HSE	
PRECISION DEWELLING COMPANY LD S #600 10370 RICHMOND AVE HOUSTON TX 77042-4136		2402 WEST HILLMONT RD ODDESSA TEXAS 79764 ATTN: DALE MAYERS (713) 435-6215	
RELIANCE INDUSTRIAL - Greeley		TAX ID # 22-174221	
ORDER NO. 062912 25279 730111		REFERENCE NUMBER 06-025279	
DATE 09/12		SHIP VIA	
CLS 062912 25279 730111		NET 54.00	
QUANTITY 1		PRICE LIST & SELL	
ORDER NO. 062912 25279 730111		NET AMOUNT	
*****PRESSURE TEST AND INSPECT*****			
WORKING PRESSURE: 3000PSI			
TEST PRESSURE: 4500PSI			
TEST DATE			
SERIAL NUMBER RELIANCE: 25279-T01			
SERIAL NUMBER CUSTOMER			
SPECIAL INSTRUCTION			
*****			
1	1	GRF 231RTUFLXHE163	EA
		FLANGE RTUJ31 XH 3M	
5	5	GRF 231RTUXH3163M	EA
		FLANGE RTUJ31 XH 3M	
PRICE LIST & SELL			
ORDER NO. 062912 25279 730111			
SUB-TOTAL			
TAX			
TOTAL			
TIME PREPARED 13:42			
TERMS: NET 30 DAYS			
The terms of sale are as stated on the invoice.			



## Reliance Eliminator Choke & Kill 3000 PSI

This hose can be used as a choke hose which connects the BOP stack to the bleed-off manifold or a kill hose which connects the mud stand pipe to the BOP kill valve.

The Reliance Eliminator Choke & Kill hose contains a specially bonded compounded cover that replaces rubber covered Asbestos, Fibreglass and other fire retardant materials which are prone to damage. This high cut and gouge resistant cover overcomes costly repairs and downtime associated with older designs.

Nom. ID		Nom OD		Weight		Min Bend Radius		Max WP	
in.	mm.	in.	mm.	lb/ft	kg/m	in.	mm.	psi	Mpa
3	76.2	4.53	115.06	8.99	13.31	30	762.0	3000	20.68
3-1/2	88.9	5.00	127	11.01	16.29	36	914.4	3000	20.68



### Fittings

RC4X5055  
RC3X5055  
RC4X5575

### Flanges

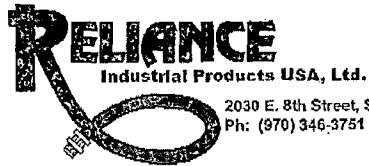
R35 - 3-1/8 5000# API Type 6B  
R31 - 3-1/8 3000# API Type 6B

### Hammer Unions

All Union Configurations

### Other

LP Threaded Connection  
Graylock  
Custom Ends

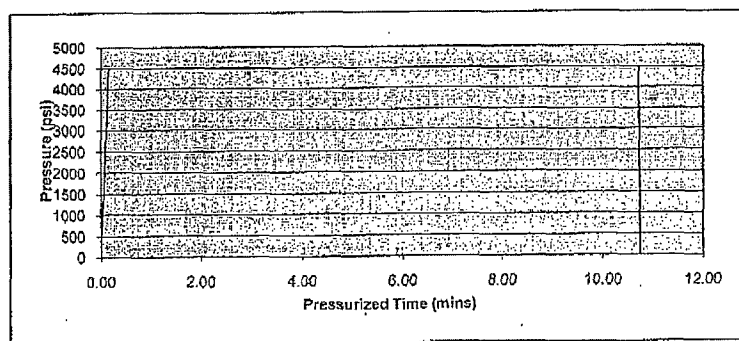
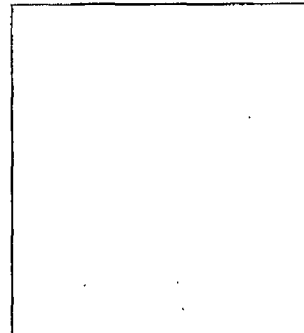


2030 E. 8th Street, Suite B • Greeley, CO 80631  
Ph: (970) 346-3751 • Fax: (970) 353-3168 • Toll Free: (866) 771-9739

## TEST CERTIFICATE

Customer: PERCISION DRILLING  
P.O. #: 73011111  
Invoice #: 25279  
Material: 3 1/2" FIRE GUARD  
Description: 2" X 30'  
Coupling 1: FLOATING FLANGE  
" Serial:  
" Quality:  
Coupling 2: FLANGE  
" Serial:  
" Quality:  
Working Pressure: 3000  
Test Pressure: 4500  
Duration (mins): 10

Cert No.: 25279TO1  
Date: 6/29/2012

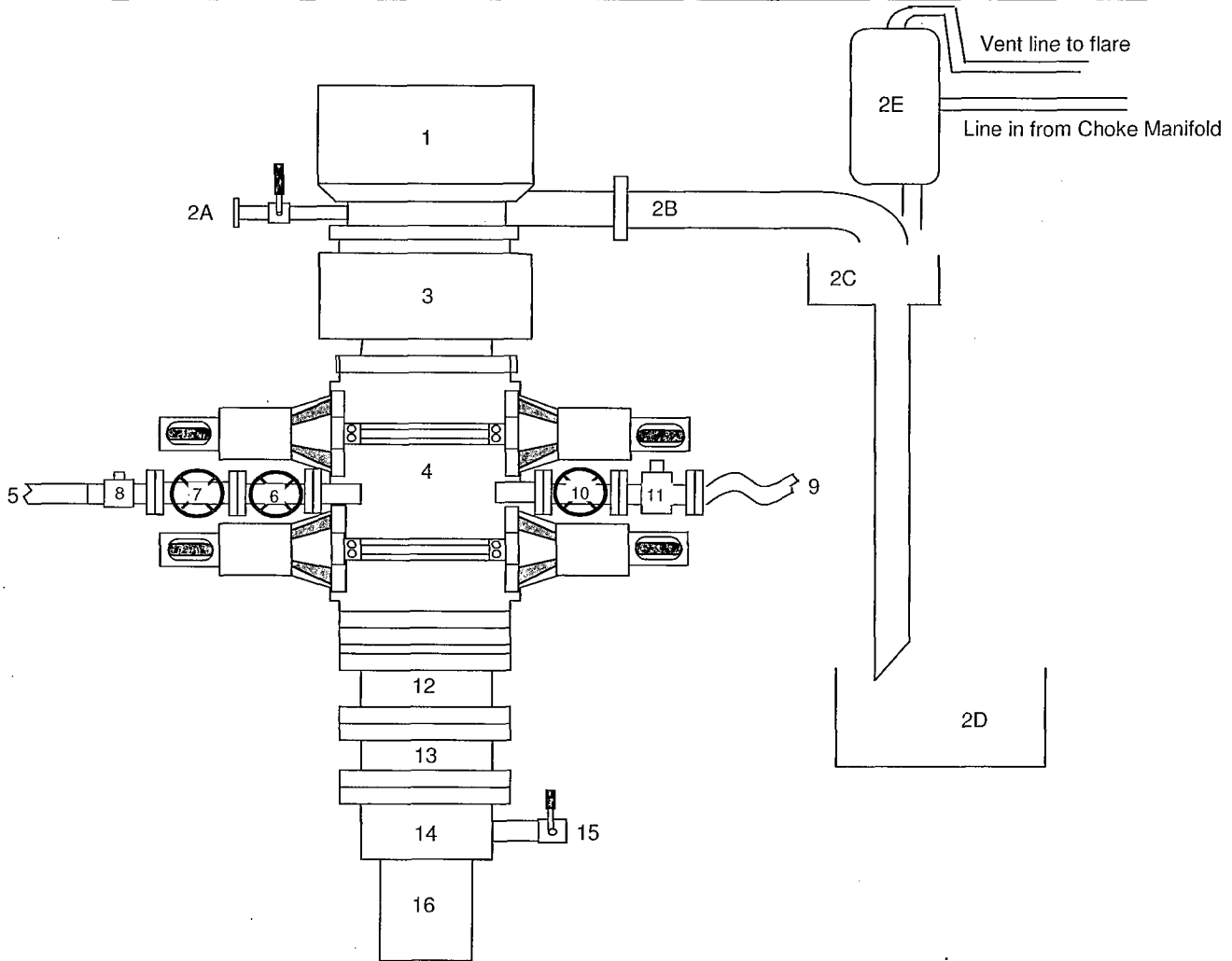


Conducted By: FLORES M.  
Test Technician

☒ Acceptable  
☐ Not Acceptable

## BLOWOUT PREVENTER ARRANGEMENT

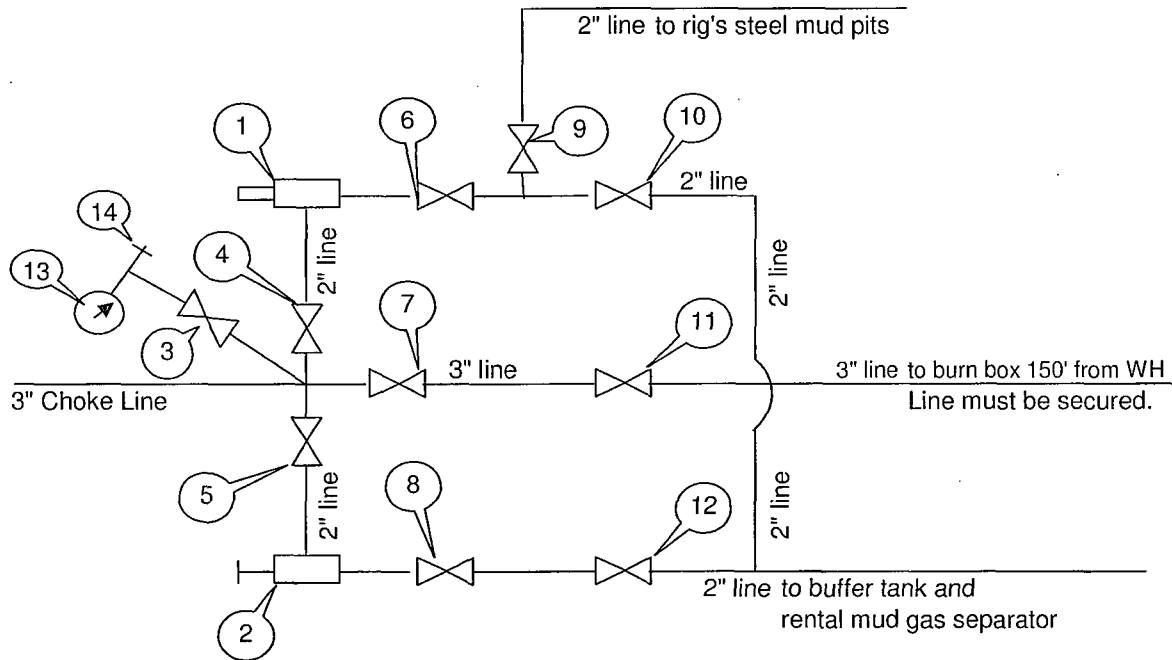
3M System per Onshore Oil and Gas Order No. 2 utilizing 3M and 5M Rated Equipment



Item	Description
1	Rotating Head, 11"
2A	Fill up Line and Valve
2B	Flow Line (10")
2C	Shale Shakers and Solids Settling Tank
2D	Cuttings Bins for Zero Discharge
2E	Rental Mud Gas Separator with vent line to flare and return line to mud system
3	Annular BOP (11", 3M)
4	Double Ram (11", 3M, equipped with Blind Rams and Pipe Rams)
5	Kill Line (2" flexible hose, 3000 psi WP)
6	Kill Line Valve, Inner (3-1/8", 3000 psi WP)
7	Kill Line Valve, Outer (3-1/8", 3000 psi WP)
8	Kill Line Check Valve (2-1/16", 3000 psi WP)
9	Choke Line (Stainless Steel Coflex Line, 3-1/8", 3000 psi WP)
10	Choke Line Valve, Inner (3-1/8", 3000 psi WP)
11	Choke Line Valve, Outer, (Hydraulically operated, 3-1/8", 3000 psi WP)
12	Adapter Flange (11" 5M to 11" 3M)
13	Spacer Spool (11", 5M)
14	Casing Head (11" 5M)
15	Ball Valve and Threaded Nipple on Casing Head Outlet, 2" 5M
16	Surface Casing

## CHOKE MANIFOLD ARRANGEMENT

3M System per Onshore Oil and Gas Order No. 2 utilizing 3M and 5M Equipment



Item	Description
1	Remote Controlled Hydraulically Operated Adjustable Choke, 2-1/16", 3M
2	Manual Adjustable Choke, 2-1/16", 3M
3	Gate Valve, 2-1/16" 5M
4	Gate Valve, 2-1/16" 5M
5	Gate Valve, 2-1/16" 5M
6	Gate Valve, 2-1/16" 5M
7	Gate Valve, 3-1/8" 3M
8	Gate Valve, 2-1/16" 5M
9	Gate Valve, 2-1/16" 5M
10	Gate Valve, 2-1/16" 5M
11	Gate Valve, 3-1/8" 3M
12	Gate Valve, 2-1/16" 5M
13	Pressure Gauge.
14	2" hammer union tie-in point for BOP Tester

We will test each valve to 3000 psi from the upstream side.

Drawn by:

Steven O. Moore

Chief Drilling Engineer, Mid-Continent Business Unit, ConocoPhillips Company

Date: 14-Sept-2012

## **Closed Loop System Design, Operating and Maintenance, and Closure Plan**

ConocoPhillips Company

Well: Emerald Federal #6

Location: Sec. 17, T17S, R32E

Date: 08-07-12

ConocoPhillips proposes the following plan for design, operating and maintenance, and closure of our proposed closed loop system for the above named well:

1. We propose to use a closed loop system with steel pits, haul-off bins, and frac tanks for containing all cuttings, solids, mud, water, brine, and liquids. We will not dig a pit, nor will we use a drying pad, nor will we build an earth pit above ground level, nor will we dispose of or bury any waste on location.

All drilling waste and all drilling fluids (fresh water, brine, mud, cuttings, drill solids, cement returns, and any other liquid or solid that may be involved) will be contained on location in the rig's steel pits or in haul-off bins or in frac tanks as needed. The intent is as follows:

- We propose to use the rigs's steel pits for containing and maintaining the drilling fluids.
- We propose to remove cuttings and drilled solids from the mud by using solids control equipment and to contain such cuttings and drilled solids on location in haul-off bins.
- We propose that any excess water that may need to be stored on location will be stored in \_\_\_\_\_.

**The closed loop system components will be inspected daily by each tour and any need repairs will be made immediately. Any leak in the system will be repaired immediately, and any spilled liquids and/or solids will be cleaned immediately, and the area where any such spill occurred will be remediated immediately.**

2. Cuttings and solids will be removed from location in haul-off bins by an authorized contractor and disposed of at an authorized facility. For this well, we propose the following disposal facility:

Controlled Recovery Inc,  
4507 West Carlsbad Hwy, Hobbs, NM 88240,  
P.O. Box 388; Hobbs, New Mexico 88241  
Toll Free Phone: 877.505.4274, Local Phone Number: 432.638.4076

The physical address for the plant where the disposal facility is located is Highway 62/180 at mile marker 66 (33 miles East of Hobbs, NM and 32 miles West of Carlsbad, NM).

The Permit Number for CRI is R9166

A photograph showing the type of haul-off bins that will be used is attached.

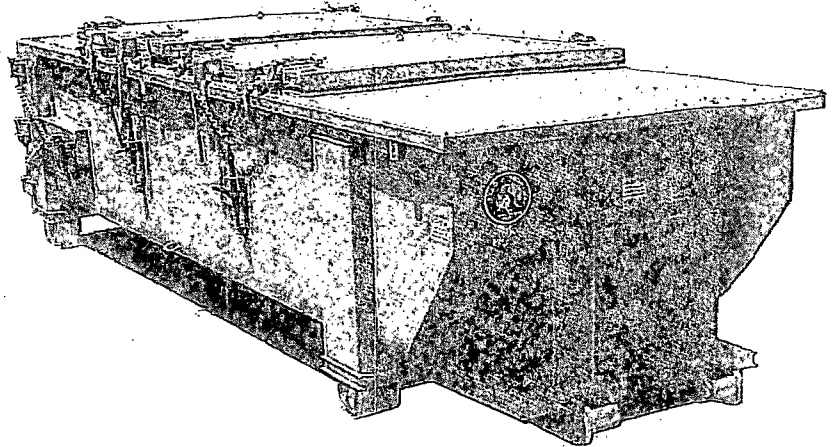
3. Mud will be transported by vacuum truck and disposed of at Controlled Recovery Inc at the facility described above.
4. Fresh Water and Brine will be hauled off by vacuum truck and disposed of at an authorized salt water disposal well. We propose the following for disposal of fresh water and brine as needed:
  - Nabors Well Services Company, 3221 NW County Rd; Hobbs, NM 88240, PO 5208 Hobbs, NM, 88241, Permit SWD 092. (Well Location: **Section 3, T19S R37E**)
  - Basic Energy Services, P.O. Box 1869; Eunice, NM 88231 Phone Number: 575.394.2545, Facility located at Hwy 18, Mile Marker 19; Eunice, NM.

James Chen  
Drilling Engineer  
Office: 832.486.2184  
Cell: 832.678.1647

# SPECIFICATIONS

## Heavy Duty Split Metal Rolling Lid

FLOOR: 3/16" PL one piece  
 CROSS MEMBER: 3 x 4 I channel 16" on center  
 WALLS: 3/16" PL solid welded with tubing top, inside liner hooks  
 DOOR: 3/16" PL with tubing frame  
 FRONT: 3/16" PL slant formed  
 PICK UP: Standard cable with 2" x 6" x 1/4" rails; gusset at each crossmember  
 WHEELS: 10 DIA x 9" long with rease fittings  
 DOOR LATCH: 3 independent ratchet binders with chains, vertical second latch  
 GASKETS: Extruded rubber seal with metal retainers  
 WELDS: All welds continuous except sub-structure crossmembers  
 FINISH: Coated inside and out with direct to metal, rust inhibiting acrylic enamel color coat  
 HYDROTESTING: Full capacity static test  
 DIMENSIONS: 22'-11" long (21'-8" inside), 99" wide (88" inside), see drawing for height  
 OPTIONS: Steel grit blast and special paint, Ampliroll, Heil and Dino pickup  
 ROOF: 3/16" PL roof panels with tubing and channel support frame  
 LIDS: (2) 68" x 90" metal rolling lids spring loaded, self raising  
 ROLLERS: 4" V-groove rollers with delrin bearings and grease fittings  
 OPENING: (2) 60" x 82" openings with 8" divider centered on container  
 LATCH: (2) independent ratchet binders with chains per lid  
 GASKETS: Extruded rubber seal with metal retainers



CONT.	A	B
20 YD	41	53
25 YD	53	65
30 YD	65	77

