

DEC 26 2012

Form C-102

Revised August 1, 2011

Submit one copy to appropriate

District Office

☐ AMENDED REPORT

District I
1625 N. French Dr., Hobbs, NM 88240
Phone: (575) 393-6161 Fax: (575) 393-6720

District II
811 S. First St., Artesia, NM 88210
Phone: (575) 748-1283 Fax: (575) 748-9720

District III
1000 Rio Brazos Road, Aztec, NM 87410
Phone: (505) 334-6178 Fax: (505) 334-6170

District IV
1220 S. St. Francis Dr., Santa Fe, NM 87505
Phone: (505) 476-3460 Fax: (505) 476-3462

State of New Mexico
Energy, Minerals & Natural Resources Department
OIL CONSERVATION DIVISION
1220 South St. Francis Dr.
Santa Fe, NM 87505

WELL LOCATION AND ACREAGE DEDICATION PLAT

¹ API Number 30-025-40898	² Pool Code 96053	³ Pool Name WC; BONE SPRING
⁴ Property Code 30884	⁵ Property Name THISTLE UNIT 33 STATE	⁶ Well Number 43H
⁷ OGRID No. 6137	⁸ Operator Name DEVON ENERGY PRODUCTION COMPANY, L.P.	⁹ Elevation 3656.0

¹⁰ Surface Location

UL or lot no.	Section	Township	Range	Lot Idn	Feet from the	North/South line	Feet from the	East/West line	County
M	33	23 S	33 E		200	SOUTH	500	WEST	LEA

" Bottom Hole Location If Different From Surface

UL or lot no.	Section	Township	Range	Lot Idn	Feet from the	North/South line	Feet from the	East/West line	County
D	33	23 S	33 E		330	NORTH	500	WEST	LEA

¹² Dedicated Acres 160	¹³ Joint or Infill	¹³ Consolidation Code	¹³ Order No.
--------------------------------------	-------------------------------	----------------------------------	-------------------------

No allowable will be assigned to this completion until all interests have been consolidated or a non-standard unit has been approved by the division.

S89°39'50"W 2638.55 FT

500' 330' BOTTOM OF HOLE

NW CORNER SEC. 33
LAT. = 32.2685894°N
LONG. = 103.5858855°W

NMSP EAST (FT)
N = 462250.40
E = 772362.29

W O CORNER SEC. 33
LAT. = 32.2613069°N
LONG. = 103.5858818°W

NMSP EAST (FT)
N = 459601.07
E = 772381.86

SW CORNER SEC. 33
LAT. = 32.2540481°N
LONG. = 103.5858782°W

NMSP EAST (FT)
N = 456960.36
E = 772401.35

200' SURFACE LOCATION

500'

N89°40'47"E 2635.87 FT

S89°39'50"W 2635.80 FT

N O CORNER SEC. 33
LAT. = 32.2685811°N
LONG. = 103.5773510°W

NMSP EAST (FT)
N = 462265.88
E = 776000.25

NE CORNER SEC. 33
LAT. = 32.2685723°N
LONG. = 103.5688255°W

NMSP EAST (FT)
N = 462281.34
E = 777635.45

E O CORNER SEC. 33
LAT. = 32.2613005°N
LONG. = 103.5688182°W

NMSP EAST (FT)
N = 459635.90
E = 777656.55

SE CORNER SEC. 33
LAT. = 32.2540344°N
LONG. = 103.5688168°W

NMSP EAST (FT)
N = 456992.49
E = 777675.80

N89°37'20"E 2639.76 FT

THISTLE UNIT 33 STATE 43H

ELEV. = 3656.0'

LAT. = 32.2545960°N (NAD83)
LONG. = 103.5842613°W

NMSP EAST (FT)
N = 457163.15
E = 772899.82

S O CORNER SEC. 33
LAT. = 32.2540379°N
LONG. = 103.5773538°W

NMSP EAST (FT)
N = 456975.09
E = 776036.64

OPERATOR CERTIFICATION

I hereby certify that the information contained herein is true and complete to the best of my knowledge and belief, and that this organization either owns a working interest or unleased mineral interest in the land including the proposed bottom hole location or has a right to drill this well at this location pursuant to a contract with an owner of such a mineral or working interest, or to a voluntary pooling agreement or a compulsory pooling order heretofore entered by the division.

12/19/2012

Signature: David H. Cook Date: _____

Printed Name: David H. Cook Regulatory Specialist

E-mail Address: david.cook@divn.com

SURVEYOR CERTIFICATION

I hereby certify that the well location shown on this plat was plotted from field notes of actual surveys made by me or under my supervision, and that the same is true and correct to the best of my belief.

NOVEMBER 8, 2012

Date of Survey: _____

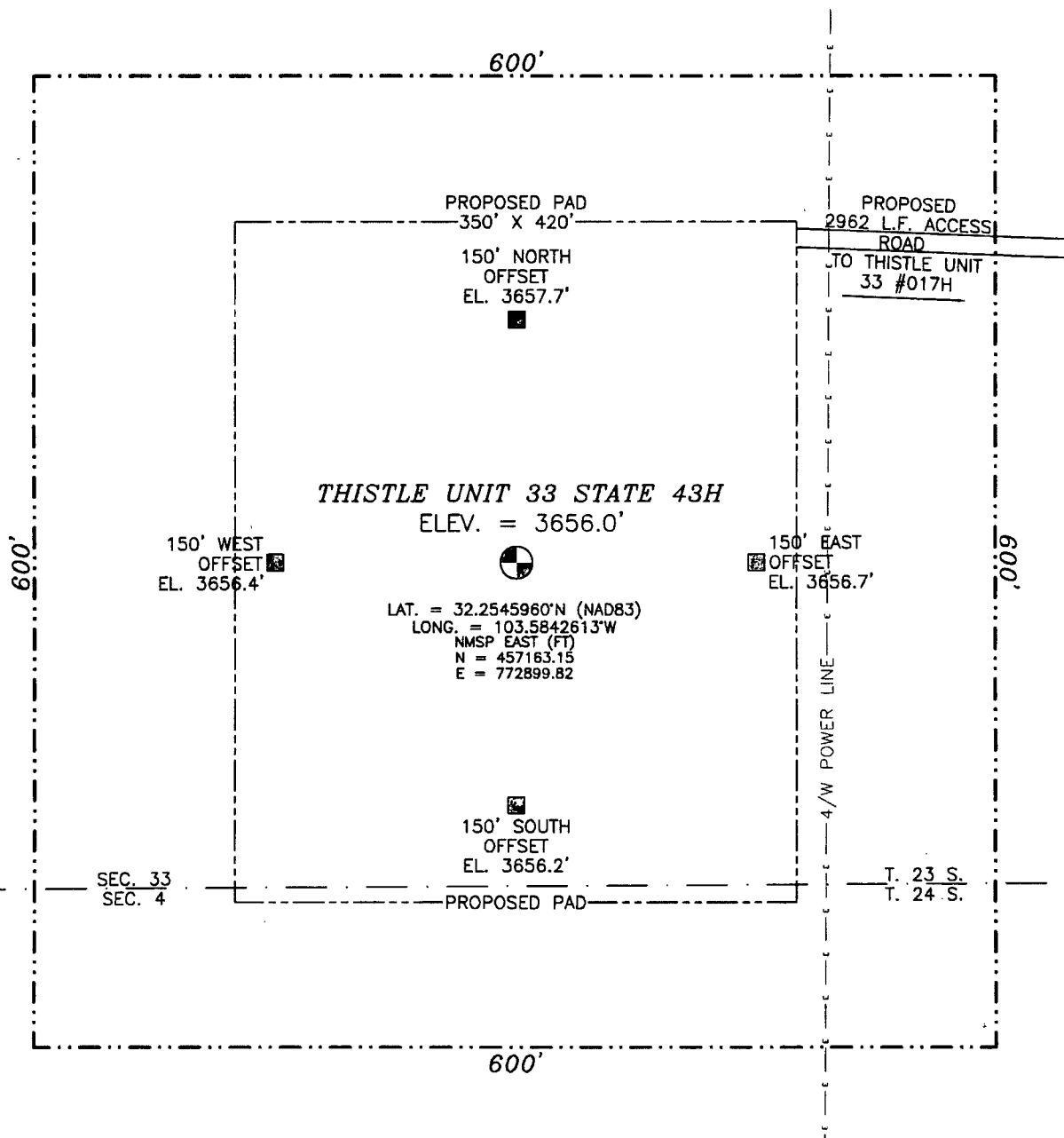
Signature and Seal of Professional Surveyor: [Signature]

Certificate Number: ILLINOIS F. JARAMILLO, PLS 12797

SURVEY NO. 1397

JAN 08 2013

SECTION 33, TOWNSHIP 23 SOUTH, RANGE 33 EAST, N.M.P.M.
LEA COUNTY, STATE OF NEW MEXICO



010 50 100 200

SCALE 1" = 100'

DIRECTIONS TO LOCATION

FROM INTERSECTION OF STATE HWY 128 AND BRININSTOOL ROAD
(COUNTY ROAD #2-A) GO NORTH ON BRININSTOOL ROAD APPROX.
3.0 MILES CROSS CATTLE GUARD TURN LEFT (WEST) AT LEASE ROAD
GO WEST APPROX 0.2 MILES TO EXISTING WELL PAD THISTLE UNIT 33
#017H AT NORTHWEST CORNER PAD IS A LATH RED AND WHITE
RIBBON PROPOSED ROAD TO THISTLE UNIT 33 STATE 43H GO WEST
APPROX 3000 FEET TO LOCATION

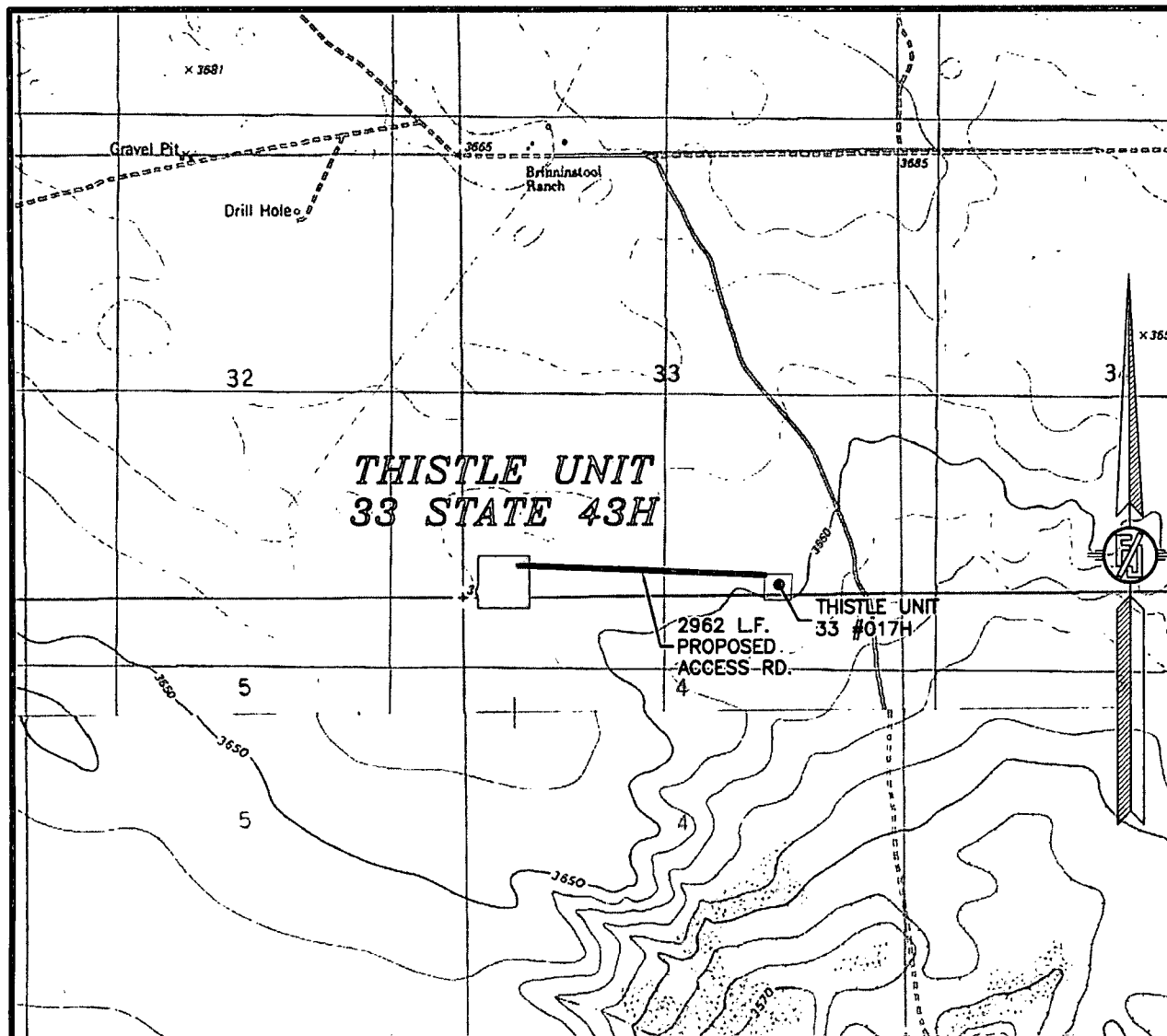
DEVON ENERGY PRODUCTION COMPANY, L.P.
THISTLE UNIT 33 STATE 43H
LOCATED 200 FT. FROM THE SOUTH LINE
AND 500 FT. FROM THE WEST LINE OF
SECTION 33, TOWNSHIP 23 SOUTH,
RANGE 33 EAST, N.M.P.M.
LEA COUNTY, STATE OF NEW MEXICO

NOVEMBER 19, 2012

SURVEY NO. 1397

MADRON SURVEYING, INC. 301 SOUTH CANAL (575) 234-3341 CARLSBAD, NEW MEXICO

SECTION 33, TOWNSHIP 23 SOUTH, RANGE 33 EAST, N.M.P.M.
LEA COUNTY, STATE OF NEW MEXICO
LOCATION VERIFICATION MAP



USGS QUAD MAP:
TIP TOP WELLS

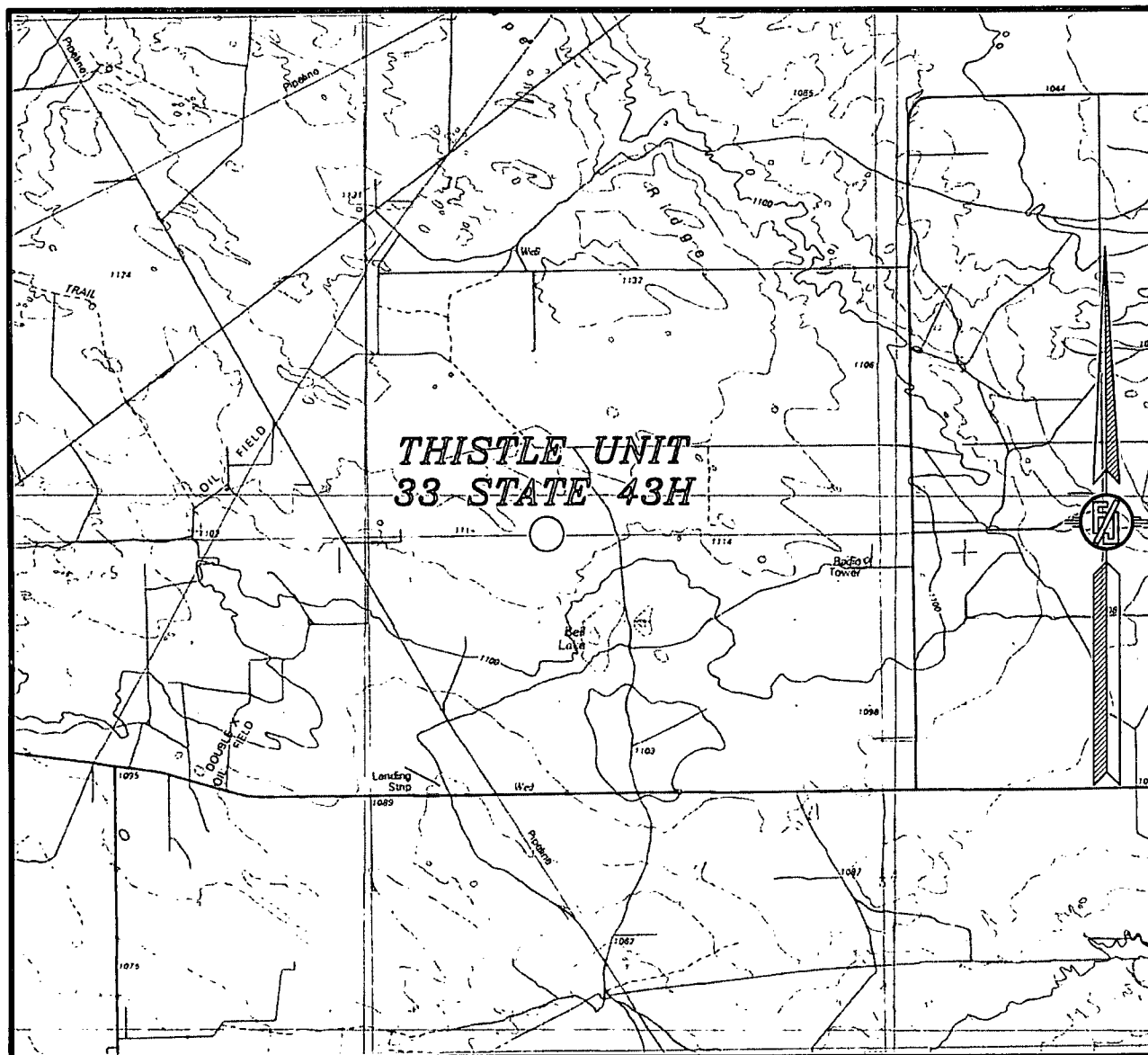
NOT TO SCALE

DEVON ENERGY PRODUCTION COMPANY, L.P.
THISTLE UNIT 33 STATE 43H
LOCATED 200 FT. FROM THE SOUTH LINE
AND 500 FT. FROM THE WEST LINE OF
SECTION 33, TOWNSHIP 23 SOUTH,
RANGE 33 EAST, N.M.P.M.
LEA COUNTY, STATE OF NEW MEXICO

NOVEMBER 19, 2012

MADRON SURVEYING, INC. 301 SOUTH CANAL CARLSBAD, NEW MEXICO
(575) 234-3341 SURVEY NO. 1397

SECTION 33, TOWNSHIP 23 SOUTH, RANGE 33 EAST, N.M.P.M.
LEA COUNTY, STATE OF NEW MEXICO
VICINITY MAP



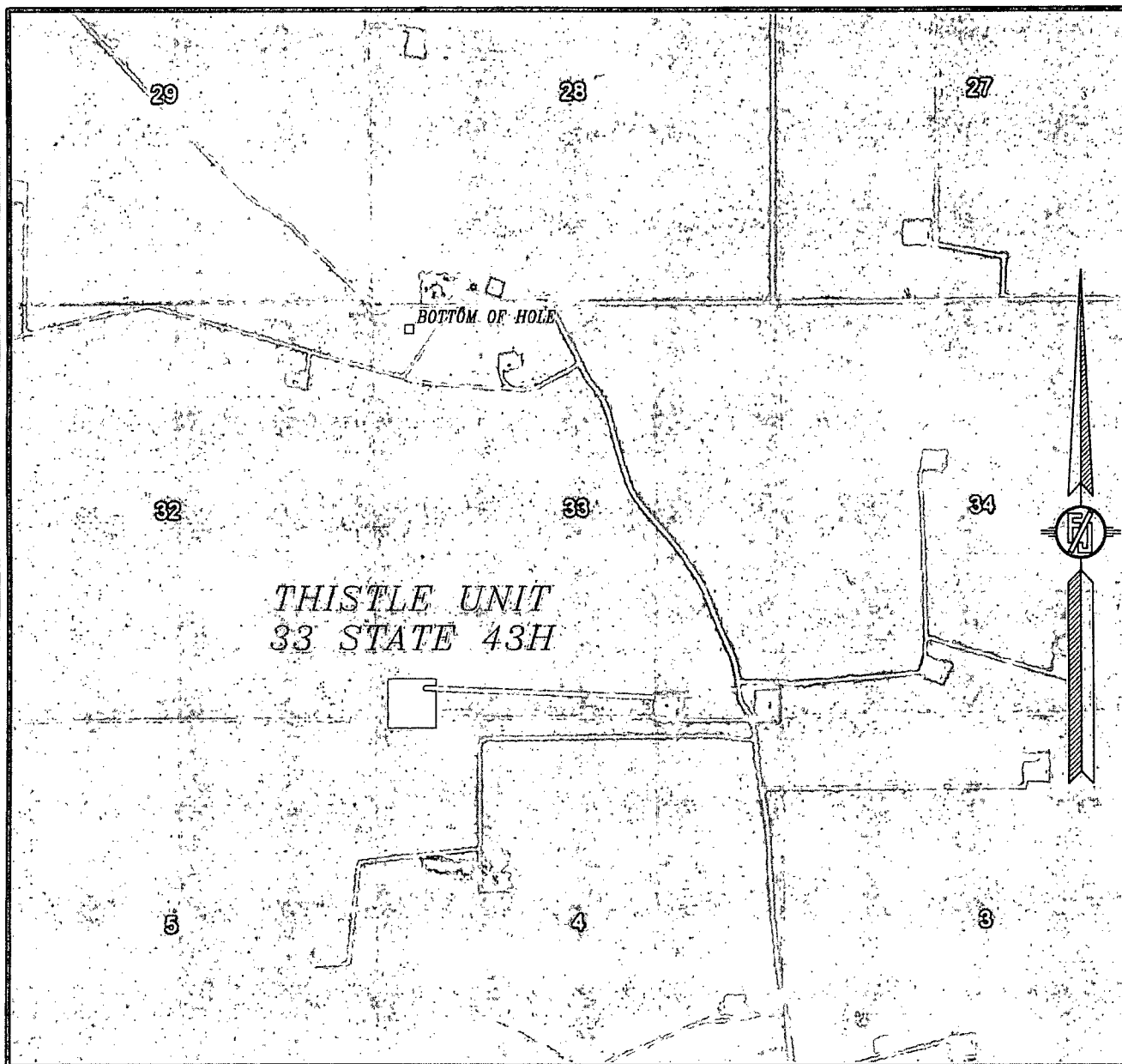
NOT TO SCALE

DEVON ENERGY PRODUCTION COMPANY, L.P.
THISTLE UNIT 33 STATE 43H
LOCATED 200 FT. FROM THE SOUTH LINE
AND 500 FT. FROM THE WEST LINE OF
SECTION 33, TOWNSHIP 23 SOUTH,
RANGE 33 EAST, N.M.P.M.
LEA COUNTY, STATE OF NEW MEXICO

NOVEMBER 19, 2012

MADRON SURVEYING, INC. 301 SOUTH CANAL CARLSBAD, NEW MEXICO
(575) 234-3341 SURVEY NO. 1397

SECTION 33, TOWNSHIP 23 SOUTH, RANGE 33 EAST, N.M.P.M.
LEA COUNTY, STATE OF NEW MEXICO
AERIAL PHOTO



NOT TO SCALE
AERIAL PHOTO:
GOOGLE EARTH
MARCH 2012

DEVON ENERGY PRODUCTION COMPANY, L.P.
THISTLE UNIT 33 STATE 43H
LOCATED 200 FT. FROM THE SOUTH LINE
AND 500 FT. FROM THE WEST LINE OF
SECTION 33, TOWNSHIP 23 SOUTH,
RANGE 33 EAST, N.M.P.M.
LEA COUNTY, STATE OF NEW MEXICO

NOVEMBER 19, 2012

SURVEY NO. 1397

MADRON SURVEYING, INC. 301 SOUTH CANAL (575) 234-3341 CARLSBAD, NEW MEXICO