

DISTRICT I
1625 N. French Dr., Hobbs, NM 88240
Phone (575) 393-6161 Fax: (575) 393-0720

DISTRICT II
811 S. First St., Artesia, NM 88210
Phone (575) 748-1283 Fax: (575) 748-0720

DISTRICT III
1000 Rio Brazos Rd., Aztec, NM 87412
Phone (505) 334-6178 Fax: (505) 334-6170

DISTRICT IV
1220 S. St. Francis Dr., Santa Fe, NM 87505
Phone (505) 476-3460 Fax: (505) 476-3462

HOBBS OCD

AUG 16 2012

RECEIVED

State of New Mexico
Energy, Minerals and Natural Resources Department

Form C-102
Revised August 1, 2011

Submit one copy to appropriate
District Office

OIL CONSERVATION DIVISION

1220 South St. Francis Dr.
Santa Fe, New Mexico 87505

WELL LOCATION AND ACREAGE DEDICATION PLAT

☐ AMENDED REPORT

API Number 30-025-40900	Pool Code 51010-97838	Pool Name JENNINGS; BS UPPER SHALE
Property Code 39606	Property Name BUCK FEDERAL (17) Corn	Well Number 3H
OGRID No. 217817	Operator Name CONOCO PHILLIPS	Elevation 3176'

Surface Location

UL or lot No.	Section	Township	Range	Lot Idn	Feet from the	North/South line	Feet from the	East/West line	County
B	20	26 S	32 E		10	NORTH	2625	EAST	LEA

Bottom Hole Location If Different From Surface

UL or lot No.	Section	Township	Range	Lot Idn	Feet from the	North/South line	Feet from the	East/West line	County
C	17	26 S	32 E		330	NORTH	2310	WEST	LEA

Dedicated Acres	Joint or Infill	Consolidation Code	Order No.
160			

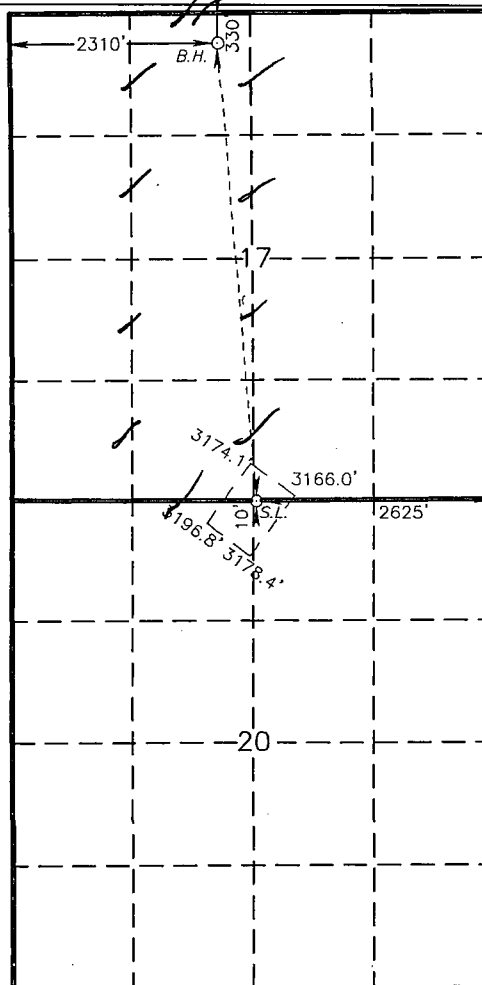
NO ALLOWABLE WILL BE ASSIGNED TO THIS COMPLETION UNTIL ALL INTERESTS HAVE BEEN CONSOLIDATED
OR A NON-STANDARD UNIT HAS BEEN APPROVED BY THE DIVISION

PROPOSED BOTTOM
HOLE LOCATION

Lat - N 32°02'57.52"
Long - W 103°41'54.17"
NMSPCE- N 382256.005
E 738061.669
(NAD-83)
Lat - N 32°02'57.07"
Long - W 103°41'52.47"
NMSPCE- N 382198.659
E 696874.877
(NAD-27)

SURFACE LOCATION

Lat - N 32°02'07.79"
Long - W 103°41'49.37"
NMSPCE- N 377233.106
E 738504.454
(NAD-83)
Lat - N 32°02'07.34"
Long - W 103°41'47.67"
NMSPCE- N 377175.883
E 697317.449
(NAD-27)



OPERATOR CERTIFICATION

I hereby certify that the information contained herein is true and complete to the best of my knowledge and belief, and that this organization either owns a working interest or unleased mineral interest in the land including the proposed bottom hole location or has a right to drill this well at this location pursuant to a contract with an owner of such a mineral or working interest, or to a voluntary pooling agreement or a compulsory pooling order heretofore entered by the division.

Donna Williams 8/13/12
Signature Date

Donna Williams
Printed Name
Donna.J.Williams@Concophillips.c
Email Address

SURVEYOR CERTIFICATION

I hereby certify that the well location shown on this plat was plotted from field notes of actual surveys made by me or under my supervision, and that the same is true and correct to the best of my belief.

GARY L. JONES
Date Surveyed
Signature & Seal of
Professional Surveyor
7977

Certificate No. Gary L. Jones 7977

BASIN SURVEYS 26445

JAN 18 2013