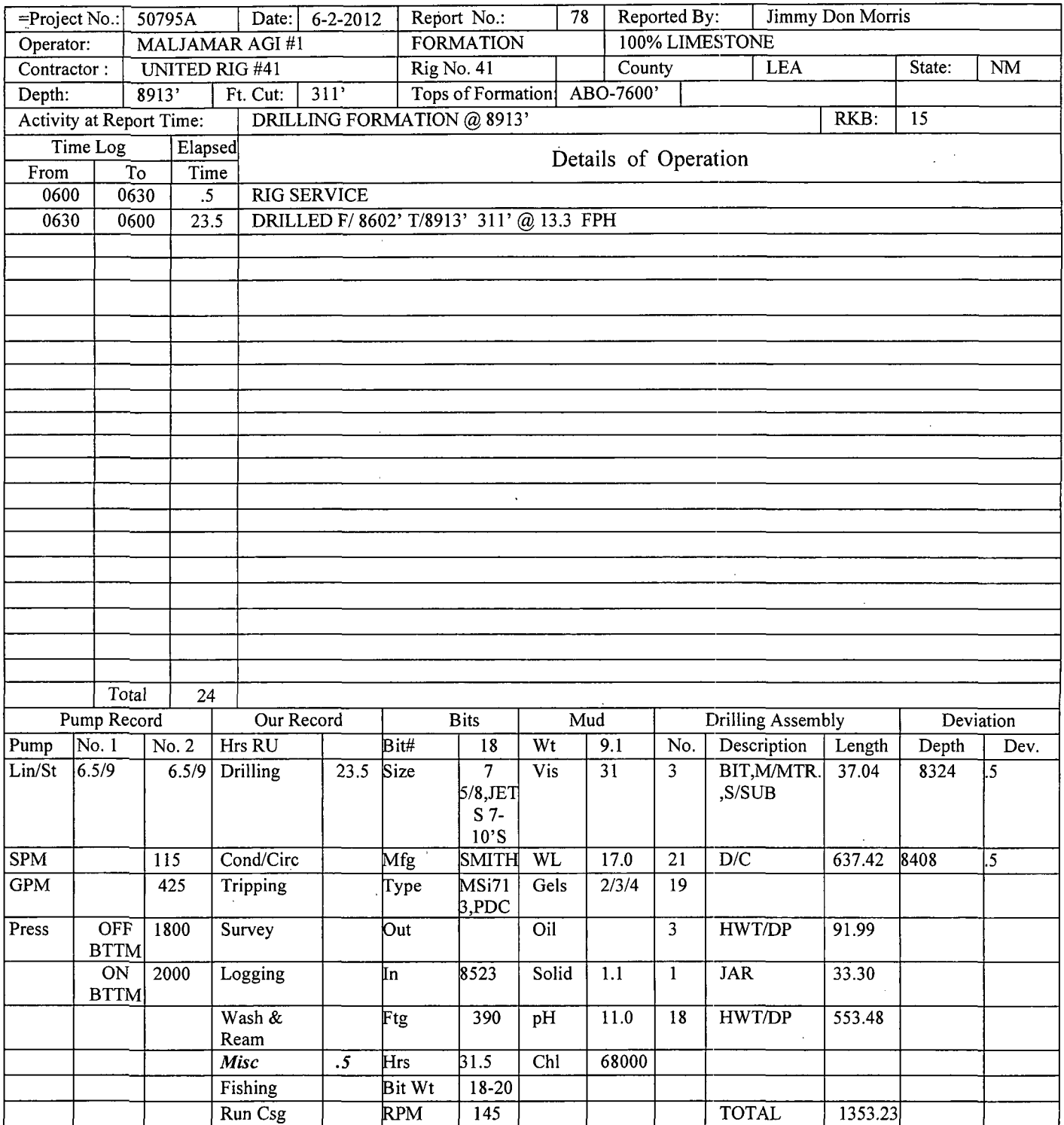
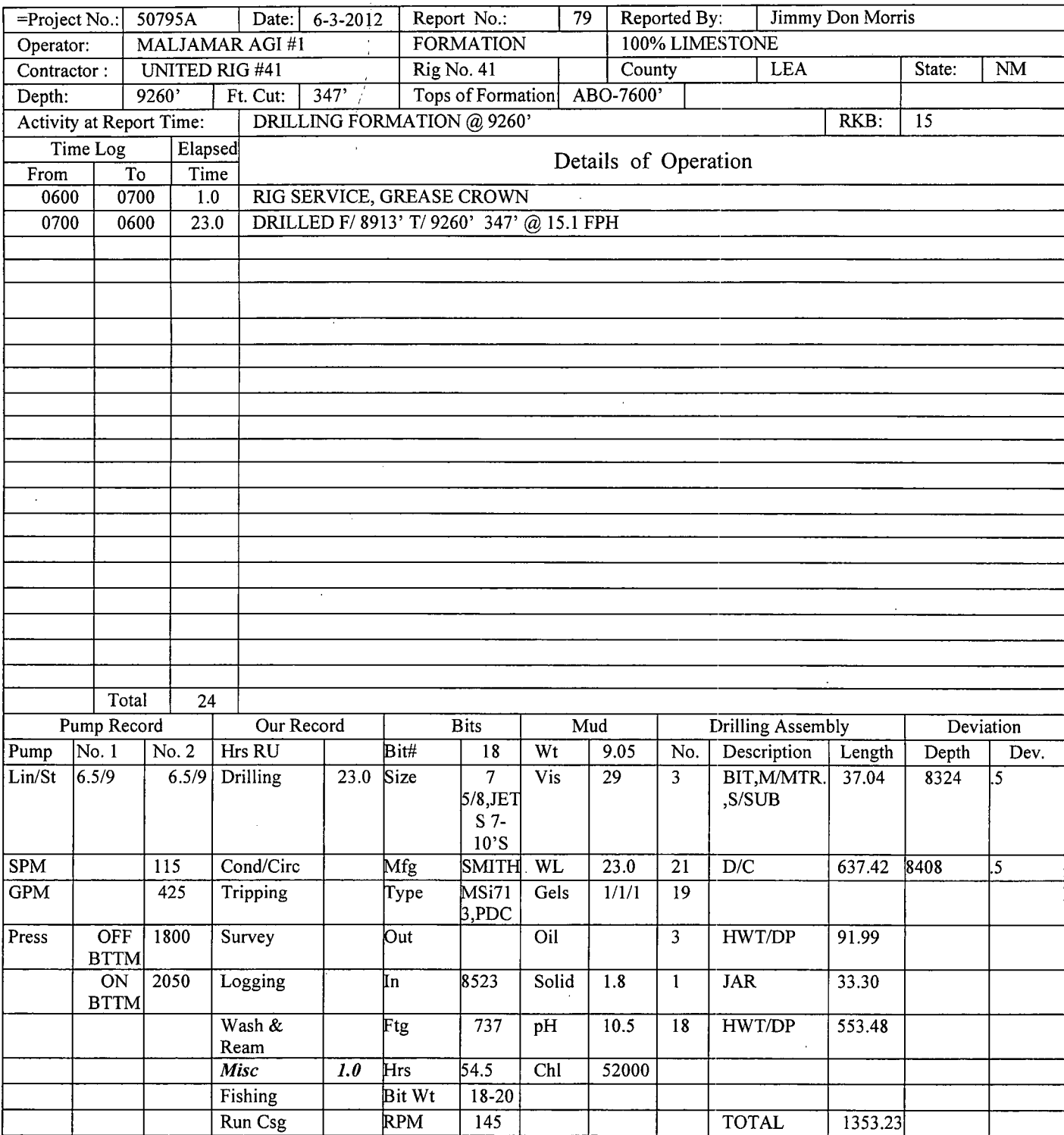
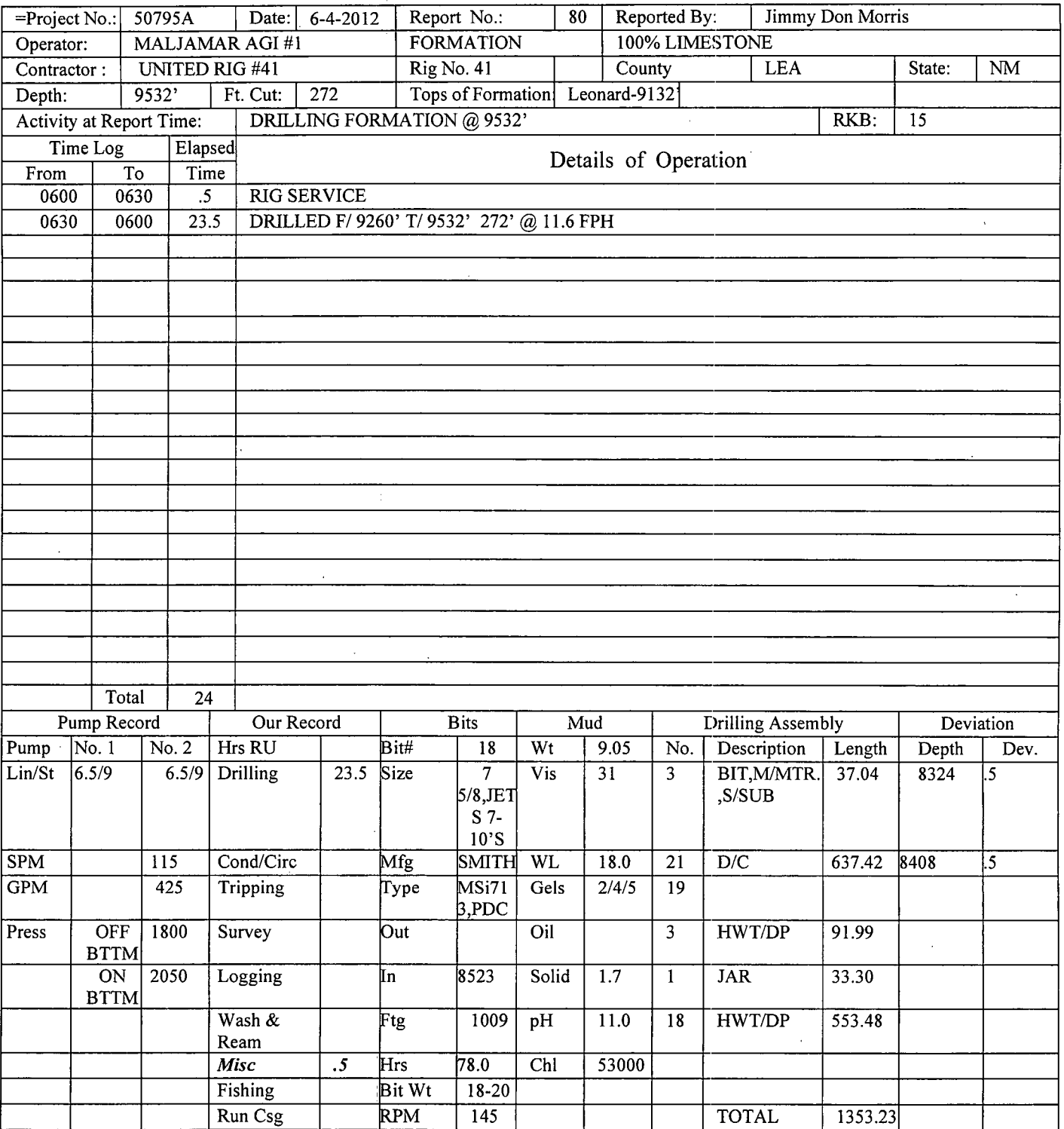


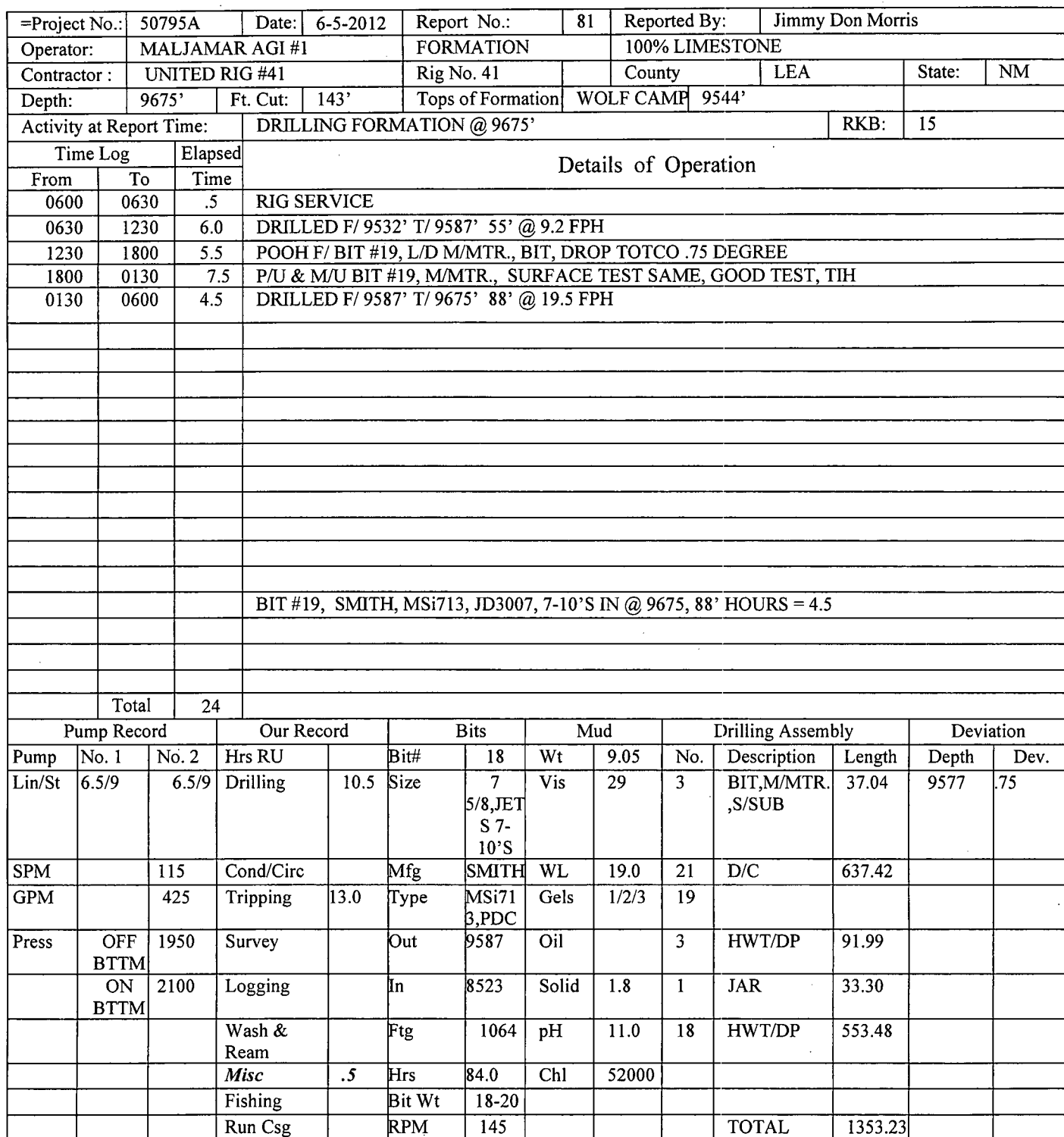
Work done 06-01-2012 thru 06-15-2012

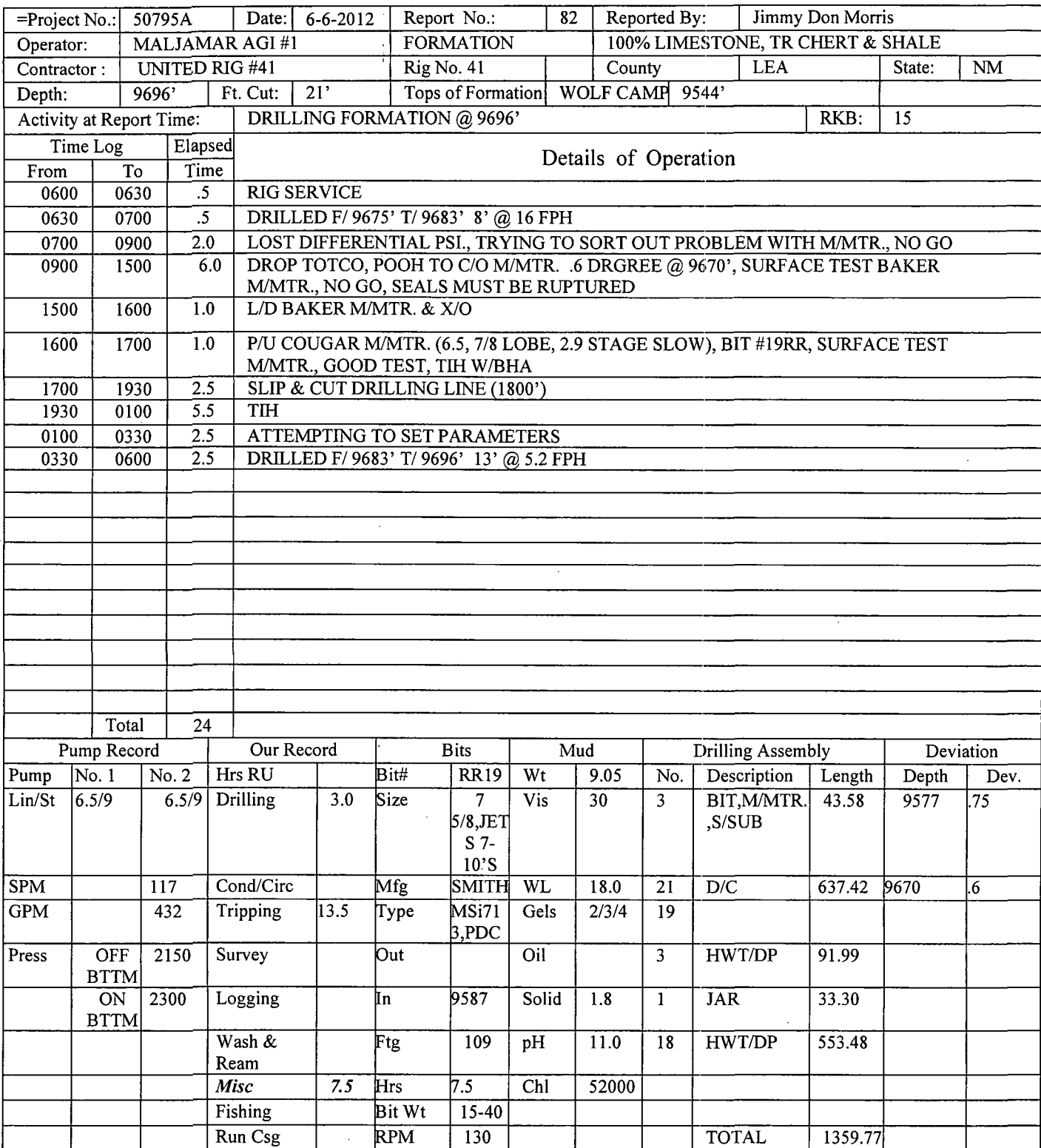
ELG 7-1-2013

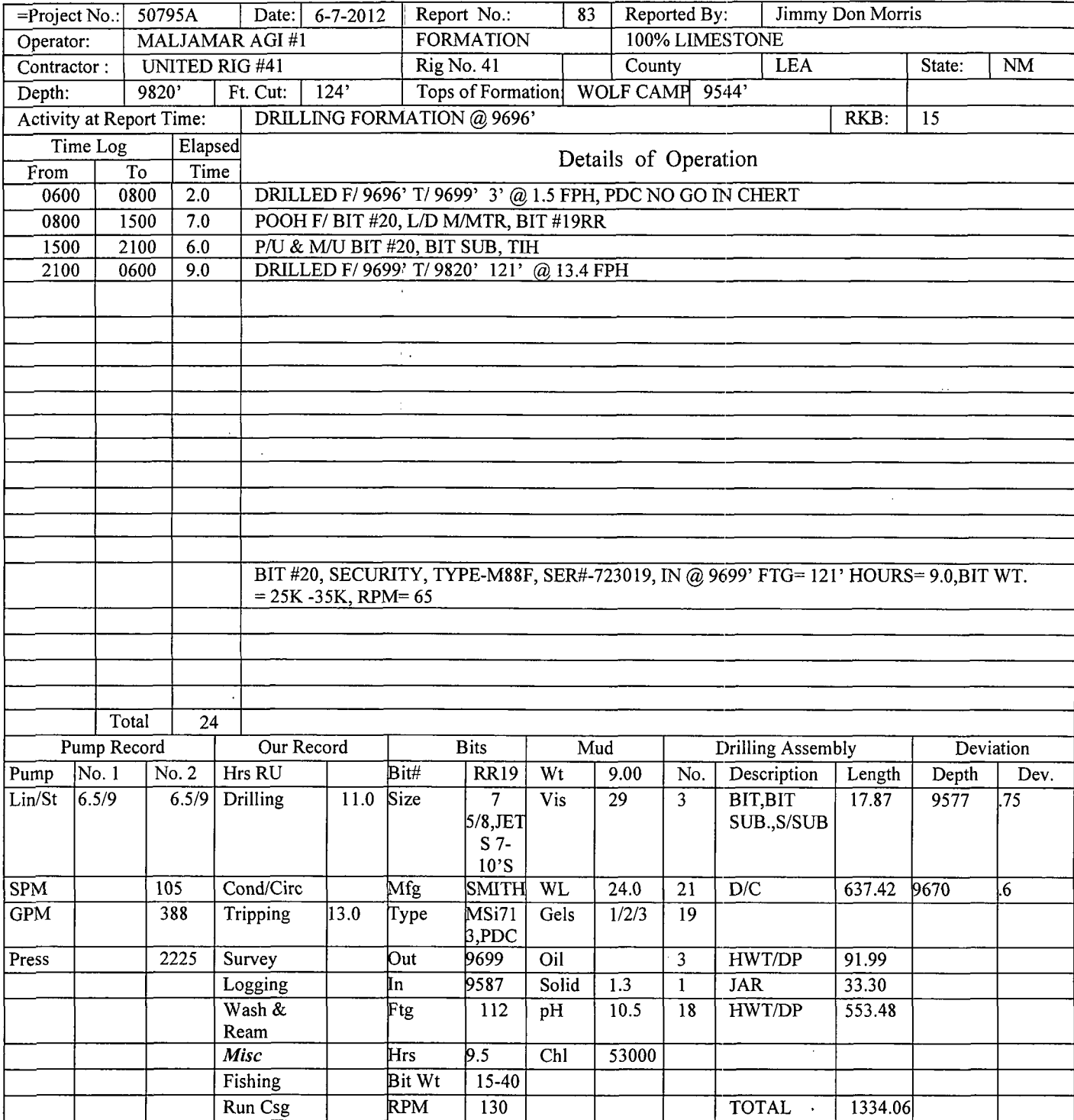


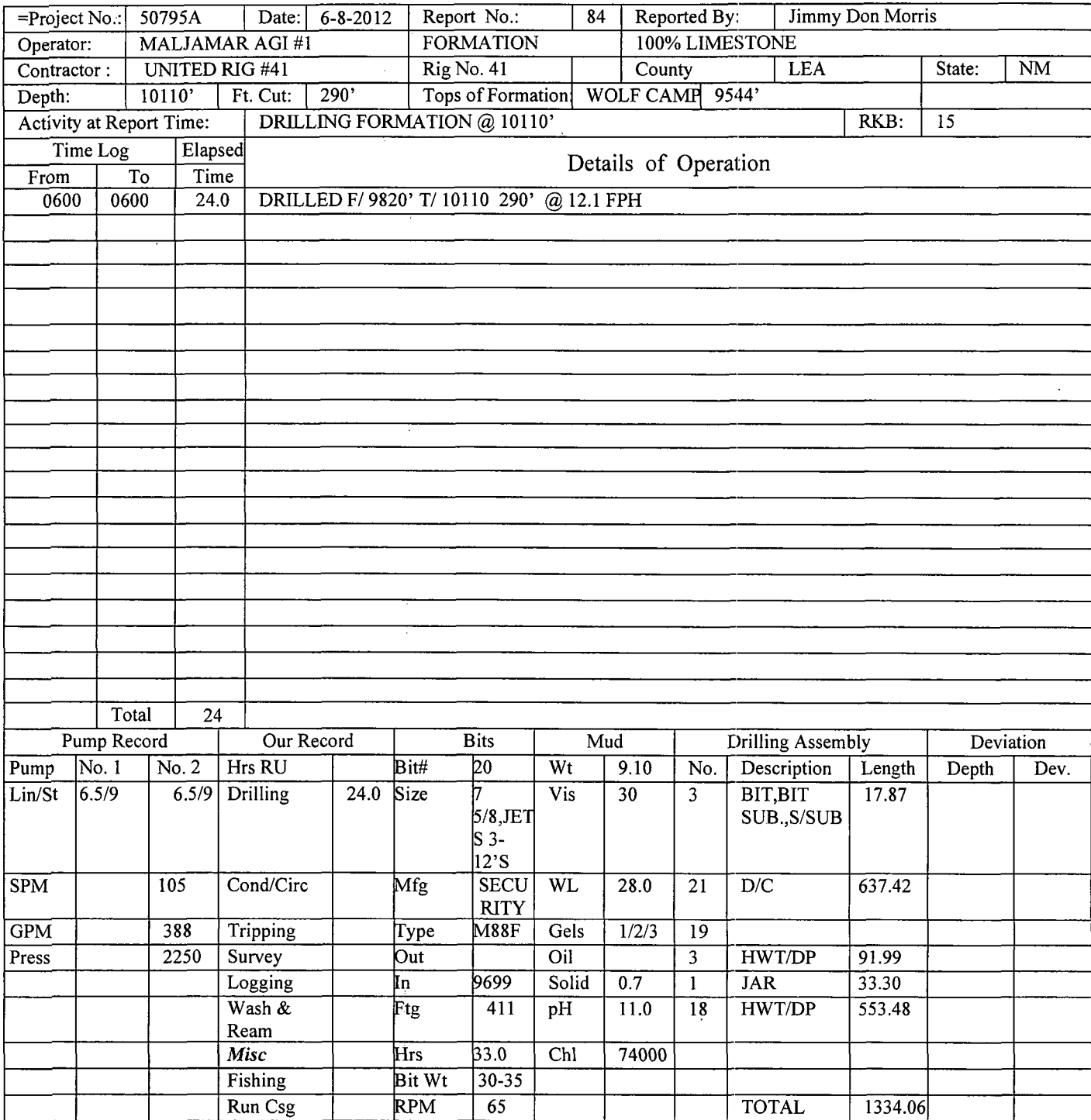


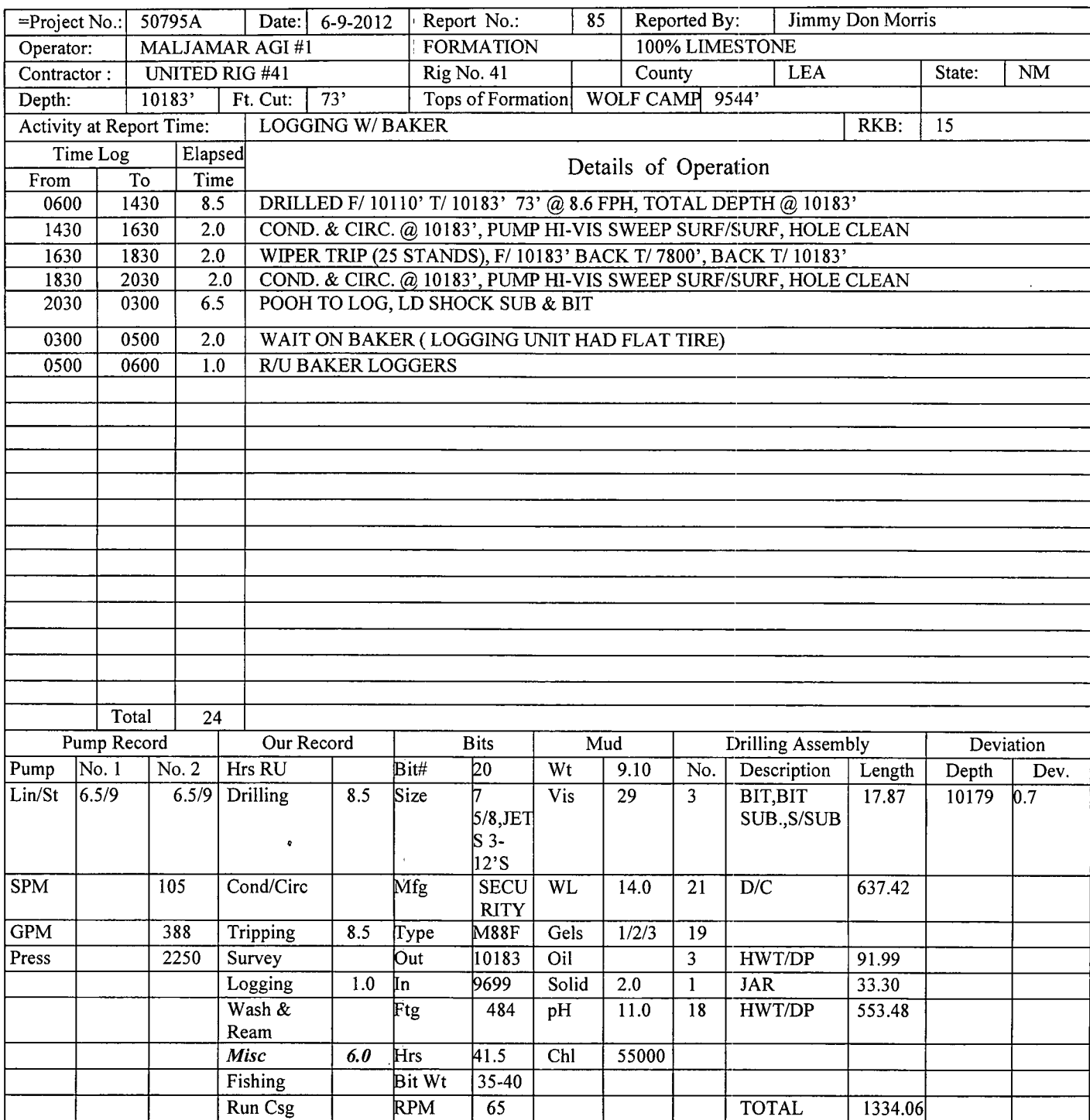


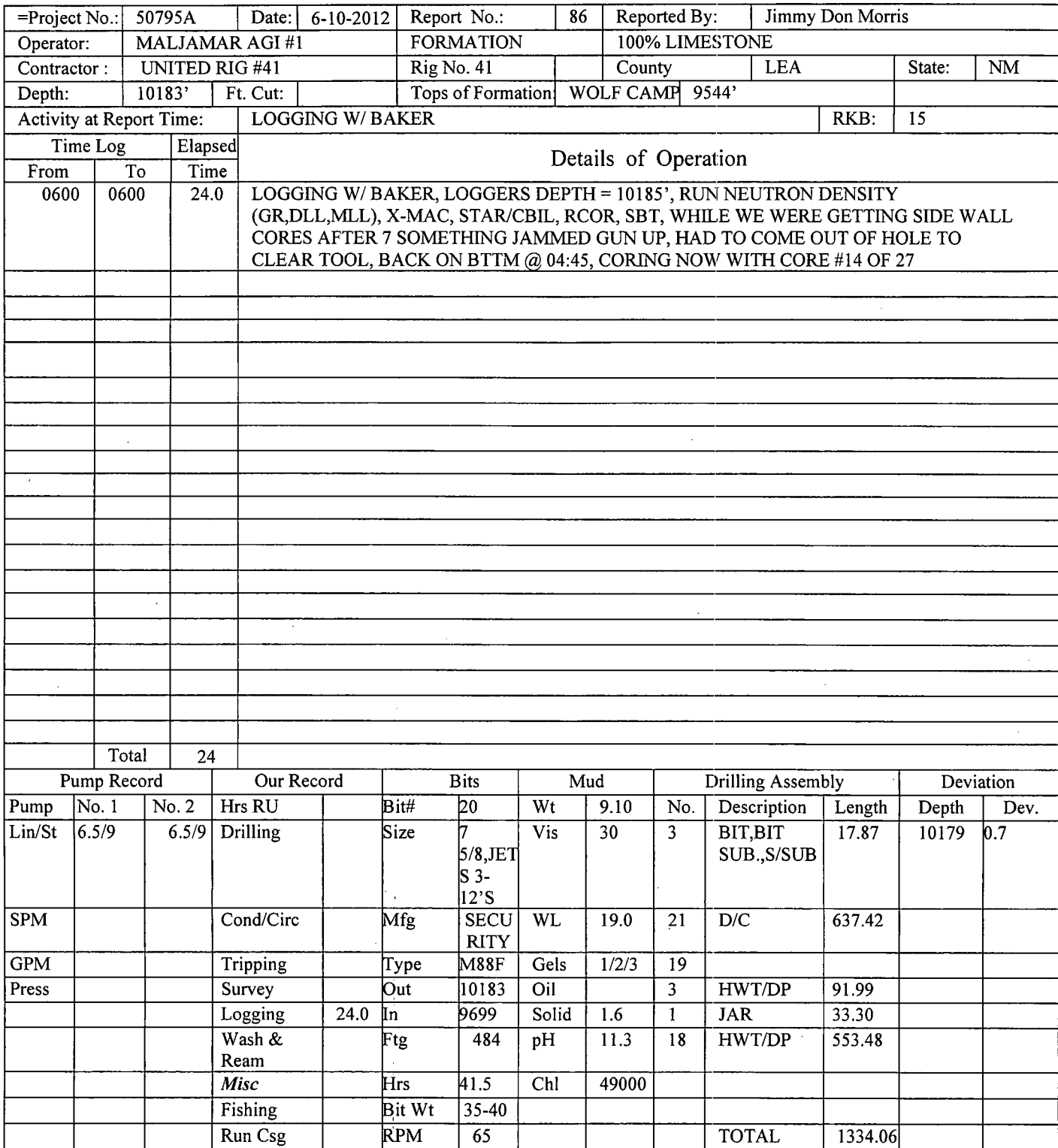


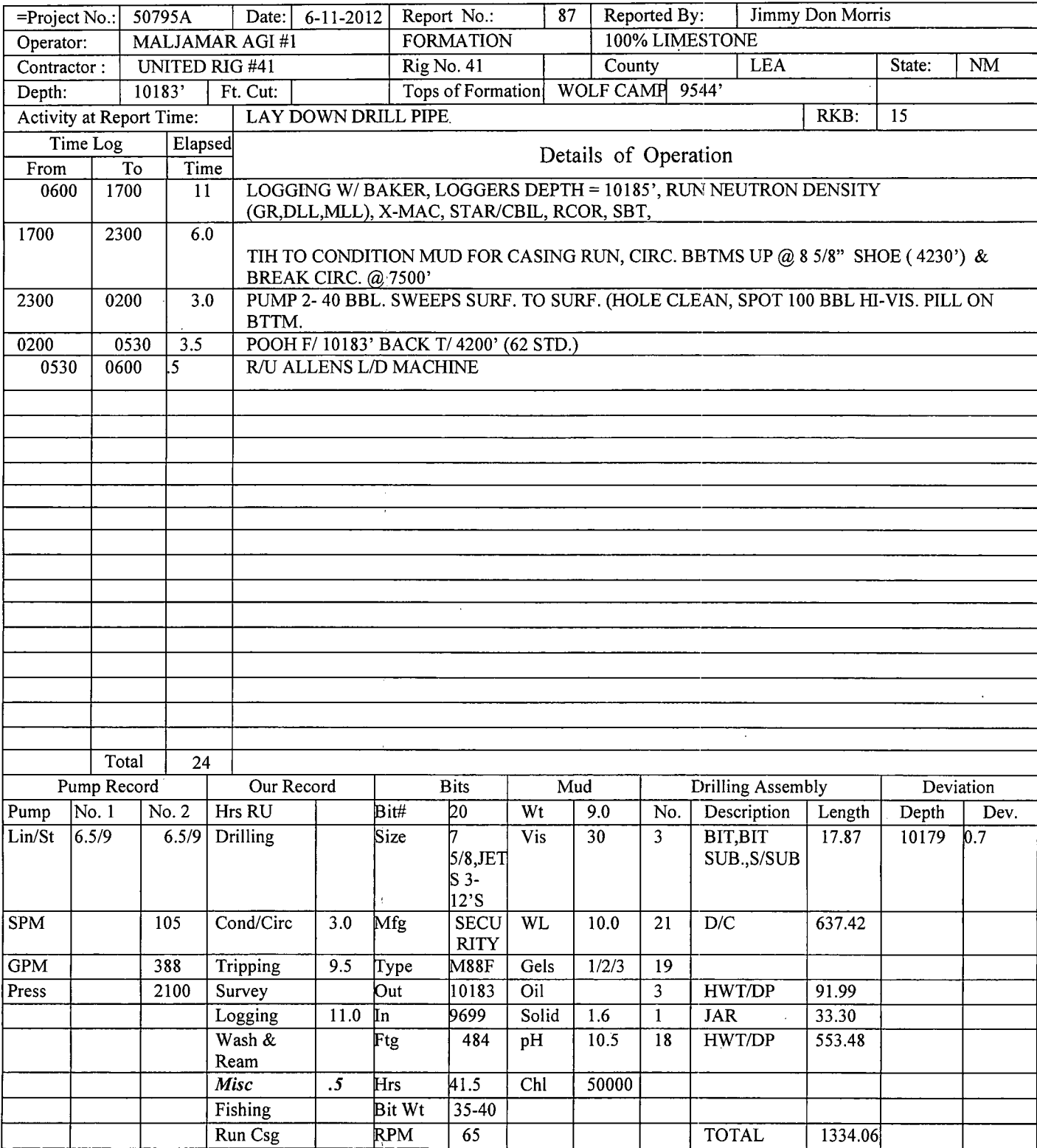


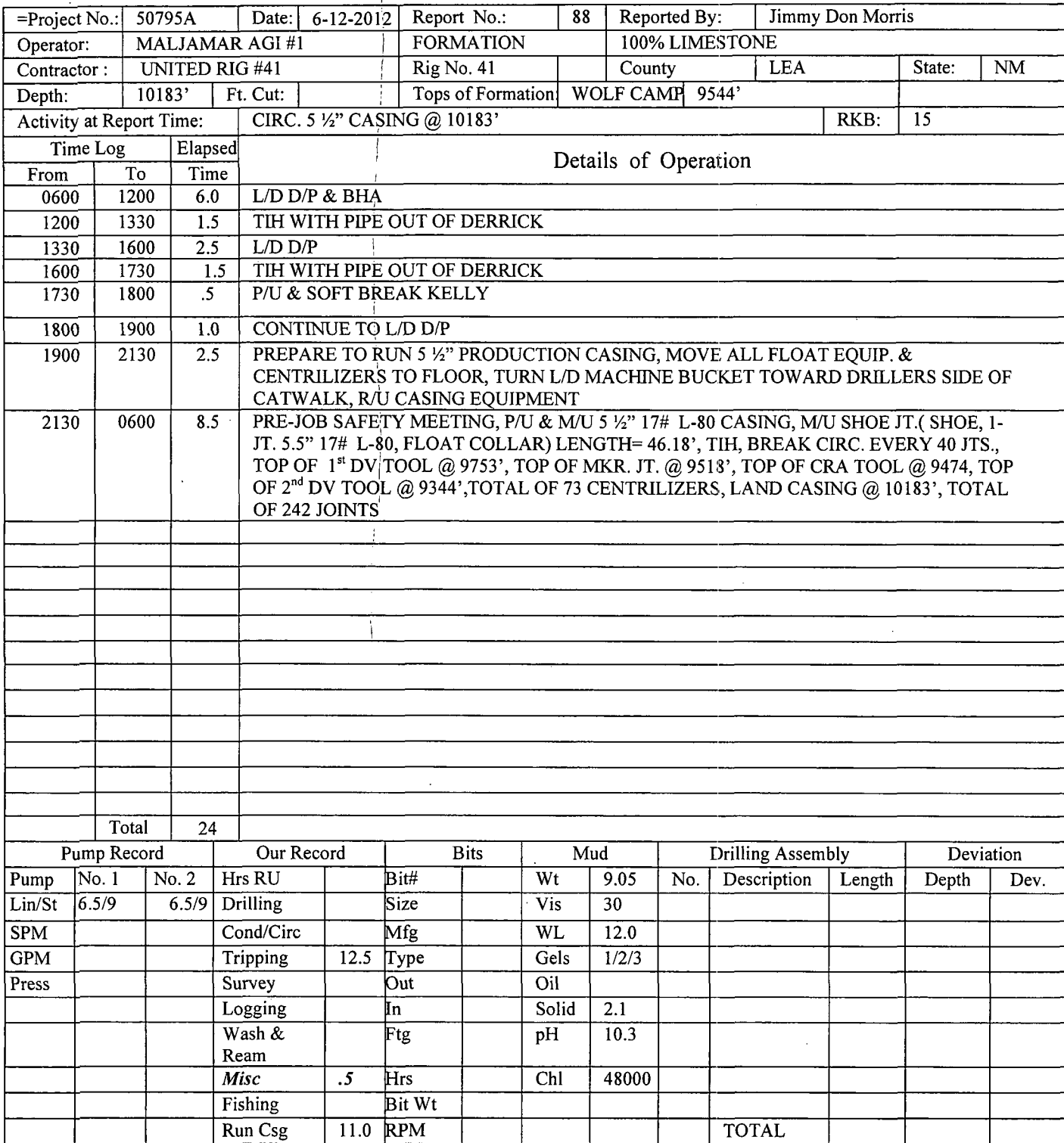


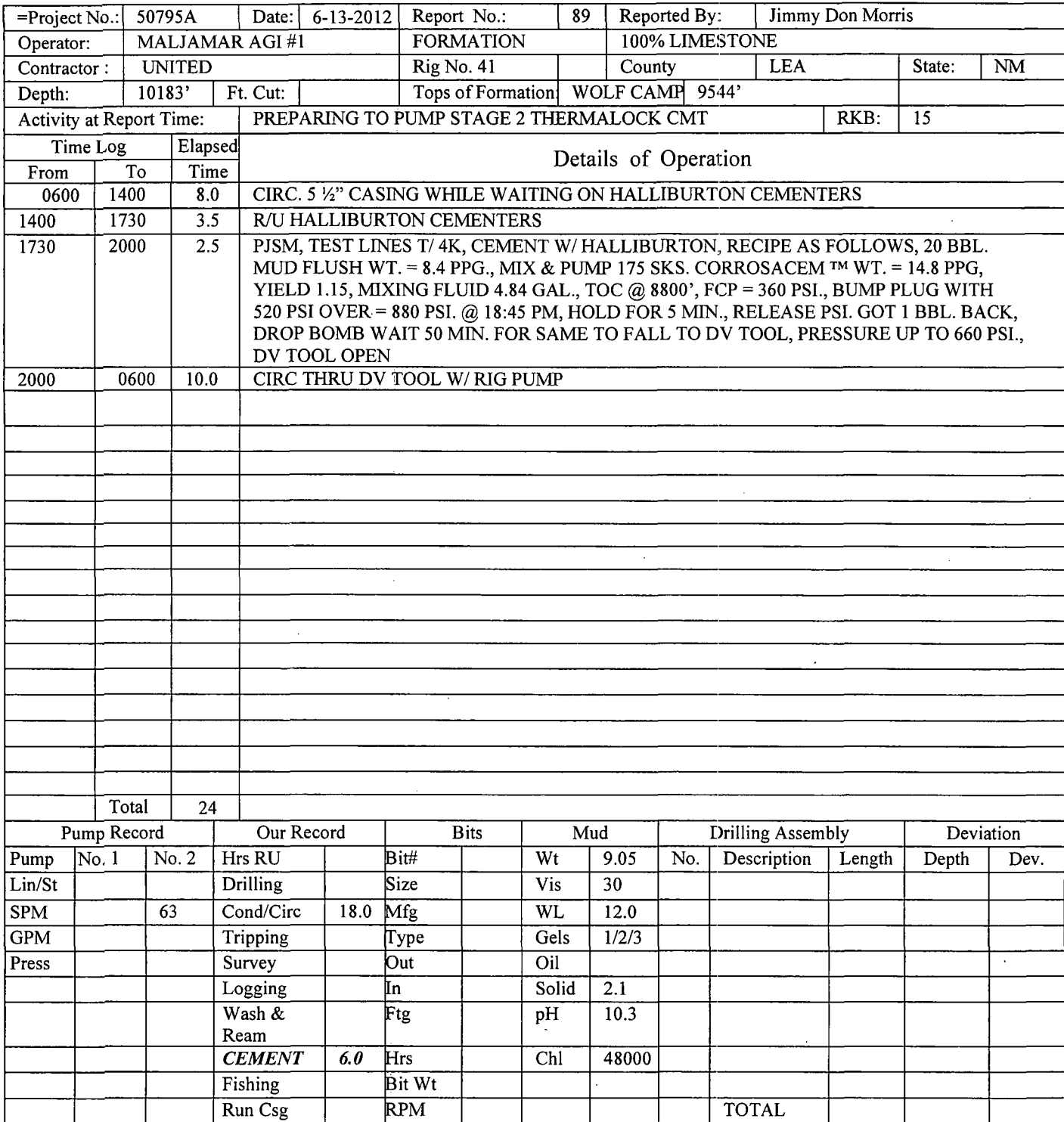














=Project No.:		50795A		Date:	6-14-2012		Report No.:	90		Reported By:	Jimmy Don Morris		
Operator:		MALJAMAR AGI #1				FORMATION			100% LIMESTONE				
Contractor :		UNITED RIG #41				Rig No. 41		County		LEA		State:	NM
Depth:		10183'		Ft. Cut:		Tops of Formation:		WOLF CAMP		9544'			
Activity at Report Time:				NIPPLE DOWN BOP'S						RKB:	15		
Time Log			Elapsed		Details of Operation								
From	To	Time											
0600	0700	1.0			CIRCULATE THRU DV TOOL W/ RIG PUMP								
0700	0930	2.5			P/JSM, TEST LINES T/ 4K, CEMENT W/ HALLIBURTON, STAGE 2 RECIPE AS FOLLOWS, 25 BBL. MUD FLUSH WT. = 12.0 PPG., MIX & PUMP 246 SKS. THERMALOCK, WT. = 15.5 PPG, YIELD 0.87, MIXING FLUID 3.33 GAL., TOC @ 8350', FCP = 520 PSI., BUMP PLUG WITH 1500 PSI OVER = 1920 PSI. @ 08:45 AM, HOLD FOR 5 MIN., RELEASE PSI. GOT 1 1/2 BBL. BACK, DROP BOMB WAIT 45 MIN. FOR SAME TO FALL TO DV TOOL, PRESSURE UP TO 780 PSI., DV TOOL OPEN								
0930	2200	12.5			CIRCULATE THRU DV TOOL W/ RIG PUMP								
2200	0100	3.0			P/JSM, TEST LINES T/ 4K, CEMENT W/ HALLIBURTON, STAGE 3 RECIPE AS FOLLOWS, 20 BBL. WATER SPACER 8.3 PPG., LEAD CEMENT, 1150 SKS OF ECONOCHEM, WT. = 12.7 PPG, YEILD = 1.86, MIXING FLUID = 10.11 GAL., TAIL CEMENT, 200 SKS OF HALCEM, WT. = 15.8 PPG, YIELD = 1.16, MIXING FLUID = 5.15 GAL., 217 BBL. DISPLACEMENT, BUMP PLUG @ 00:45 AM WITH FCP = 2850 PSI, BUMP PLUG WITH 1500 PSI OVER = 4350 PSI, HOLD FOR 5 MIN. GOT 3 BBLs. BACK, FLOATS HELD, GOT 25 BBLs. CEMENT BACK TO SURFACE, FULL RETURNS THRU OUT JOB, CEMENT IN PLACE @ 00:45 AM								
0100	0200	1.0			RIG DOWN HALLIBURTON CEMENTERS								
0200	0400	2.0			P/U BOP'S, SET 5 1/2" CASING SLIPS WITH 50K, MAKE ROUGH CUT ON 5 1/2" CSG., L/D SAME								
0400	0600	2.0			NIPPLE DOWN BOP'S								
Total		24											
Pump Record			Our Record		Bits		Mud		Drilling Assembly			Deviation	
Pump			Hrs RU		Bit#		Wt		No.	Description	Length	Depth	Dev.
Lin/St			Drilling		Size		Vis						
SPM			Cond/Circ	13.5	Mfg		WL						
GPM			Tripping		Type		Gels						
Press			Survey		Out		Oil						
			Logging		In		Solid						
			Wash & Ream		Ftg		pH						
			<b>CEMENT</b>	5.5	Hrs		Chl						
			Fishing		Bit Wt								
			MISC.	5.0	RPM					TOTAL			

