

DISTRICT I
1025 N. French Dr., Hobbs, NM 88240
Phone (505) 393-8161 Fax: (505) 393-0720

DISTRICT II
811 S. First St., Artesia, NM 88210
Phone (505) 748-1283 Fax: (505) 748-0720

DISTRICT III
1000 Rio Brazos Rd., Aztec, NM 87410
Phone (505) 334-5178 Fax: (505) 334-5170

DISTRICT IV
1220 S. St. Francis Dr., Santa Fe, NM 87505
Phone (505) 476-3460 Fax: (505) 476-3468

State of New Mexico
Energy, Minerals and Natural Resources Department

Form C-102
Revised August 1, 2011
Submit one copy to appropriate
District Office

OIL CONSERVATION DIVISION
1220 South St. Francis Dr.
Santa Fe, New Mexico 87505

WELL LOCATION AND ACREAGE DEDICATION PLAT

☐ AMENDED REPORT

API Number 30-025-40503	Pool Code 97838	Well Name <i>Jennings; Upper Red Hill; Bone Spring Shale</i>
Property Code 39058	Property Name BUCK FEDERAL 20	Well Number 3H
OGRID No. 217817	Operator Name CONOCO PHILLIPS	Elevation 3179'

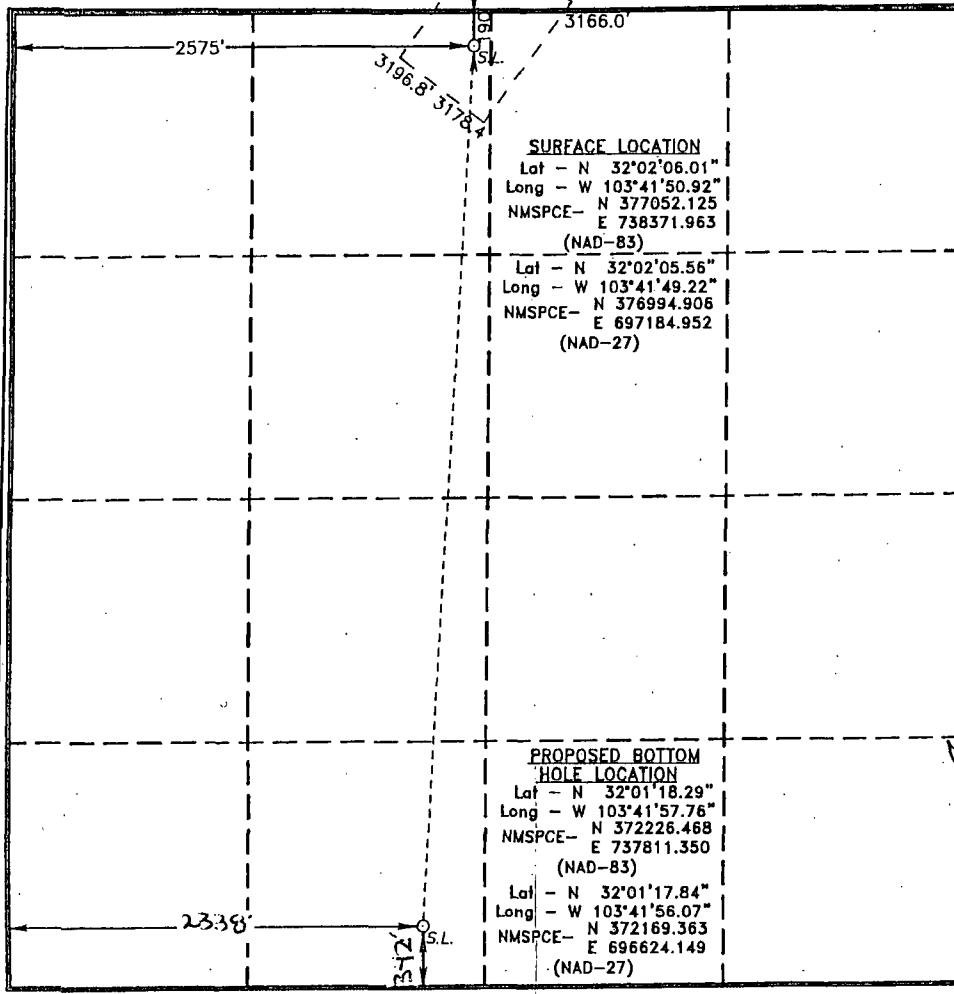
Surface Location

UL or lot No.	Section	Township	Range	Lot Idn	Feet from the	North/South line	Feet from the	East/West line	County
C	20	26 S	32 E		190	NORTH	2575	WEST	LEA

Bottom Hole Location If Different From Surface

UL or lot No.	Section	Township	Range	Lot Idn	Feet from the	North/South line	Feet from the	East/West line	County
N	20	26 S	32 E		<i>5998</i> <i>598</i>	<i>10 SOUTH</i>	<i>2338</i>	WEST	LEA
Dedicated Acres	Joint or Infill	Consolidation Code	Order No.	3174.1'					

NO ALLOWABLE WILL BE ASSIGNED TO THIS COMPLETION UNTIL ALL INTERESTS HAVE BEEN CONSOLIDATED
OR A NON-STANDARD UNIT HAS BEEN APPROVED BY THE DIVISION



OPERATOR CERTIFICATION

I hereby certify that the information contained herein is true and complete to the best of my knowledge and belief, and that this organization either owns a working interest or unleased mineral interest in the land including the proposed bottom hole location or has a right to drill this well at this location pursuant to a contract with an owner of such a mineral or working interest, or to a voluntary pooling agreement or a compulsory pooling order heretofore entered by the division.

Ashley Martin 12/1/12
Signature Date

Ashley Martin
Printed Name

ashley.martin@conocoPhillips.com
Email Address

SURVEYOR CERTIFICATION

I hereby certify that the well location shown on this plat was plotted from field notes of actual surveys made by me or under my supervision and that the same is true and correct to the best of my belief.

GARY L. JONES
Professional Surveyor
Date Surveyed
Signature & Seal of Professional Surveyor
W.L. No. 48512

Certificate No. Gary L. Jones 7977

BASIN SURVEYS 26512