

District I  
1625 N. French Dr., Hobbs, NM 88240  
District II  
1301 W. Grand Avenue, Artesia, NM 88210  
District III  
1000 Rio Brazos Rd., Aztec, NM 87410  
District IV  
1220 S. St. Francis Dr., Santa Fe, NM 87505

State of New Mexico  
Energy, Minerals & Natural Resources Department  
OIL CONSERVATION DIVISION  
1220 South St. Francis Dr.  
Santa Fe, NM 87505

Form C-102  
Revised October 12, 2005  
Submit to Appropriate District Office  
State Lease-4 Copies  
Fee Lease-3 Copies

☒ AMENDED REPORT

WELL LOCATION AND ACREAGE DEDICATION PLAT

API Number 30-025-40306	Pool Code 51683	Pool Name Red Tank Bone Springs
Property Code 38847	Property Name BOOTLEG GIN FEDERAL COM	Well Number 1H
OGRID No. 16696	Operator Name OXY USA INC.	Elevation 3643.5'

Surface Location

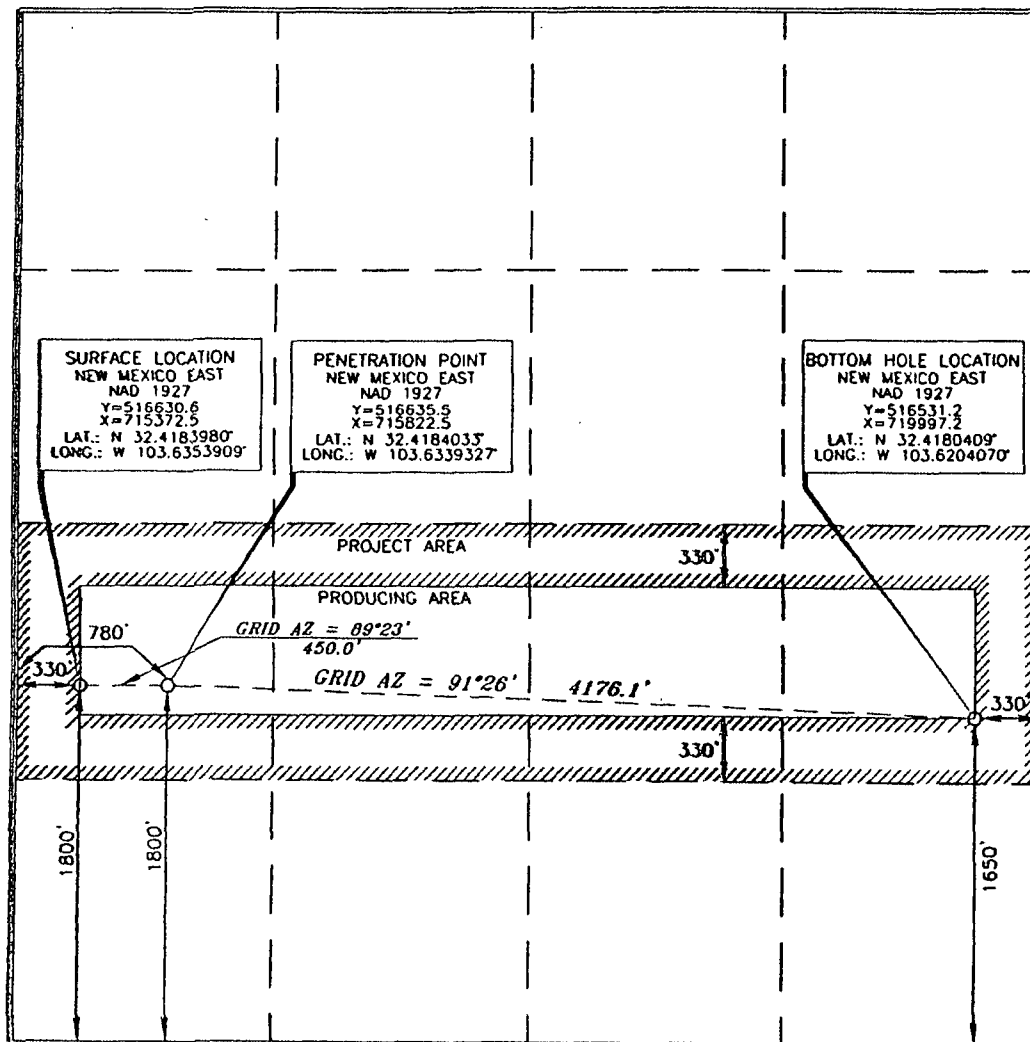
UL or lot no.	Section	Township	Range	Lot	Feet from the	North/South line	Feet from the	East/West line	County
L	1	22 SOUTH	32 EAST, N.M.P.M.		1800'	SOUTH	330'	WEST	LEA

Bottom Hole Location If Different From Surface

UL or lot no.	Section	Township	Range	Lot	Feet from the	North/South line	Feet from the	East/West line	County
I	1	22 SOUTH	32 EAST, N.M.P.M.		1650'	SOUTH	330'	EAST	LEA

Dedicated Acres	Joint or Infill	Consolidation Code	Order No.
160	N		

No allowable will be assigned to this completion until all interests have been consolidated or a non-standard unit has been approved by the division.



OPERATOR CERTIFICATION

I hereby certify that the information contained herein is true and complete to the best of my knowledge and belief, and that this organization either owns a working interest or unleased mineral interest in the land including the proposed bottom hole location or has a right to drill this well at this location pursuant to a contract with an owner of such a mineral or working interest, or to a voluntary pooling agreement or a compulsory pooling order heretofore entered by the division.

Signature: *David Stewart-Rey, WDO*  
Date: 6/21/12

Printed Name: David Stewart-Rey, WDO

SURVEYOR CERTIFICATION

I hereby certify that the well location shown on this plat was plotted from field notes on actual surveys made by me or under my supervision, and that the same is true and correct to the best of my belief.

Date of Survey: MARCH 25, 2011  
Signature and Seal of Professional Land Surveyor: *Jerry A. Reed*  
Certificate Number: 15079

Amended