

District I
1625 N. French Dr., Hobbs, NM 88240
Phone: (575) 393-6161 Fax: (575) 393-0720

District II
811 S. First St., Artesia, NM 88210
Phone: (575) 748-1283 Fax: (575) 748-9720

District III
1000 Rio Brazos Road, Aztec, NM 87410
Phone: (505) 334-6178 Fax: (505) 334-6170

District IV
1220 S. St. Francis Dr., Santa Fe, NM 87505
Phone: (505) 476-3460 Fax: (505) 476-3462

State of New Mexico

Form C-101
Revised November 14, 2012

Energy Minerals and Natural Resources

Oil Conservation Division

☐ AMENDED REPORT

1220 South St. Francis Dr.

Santa Fe, NM 87505

HOBBS OCD

JAN 10 2013

RECEIVED

APPLICATION FOR PERMIT TO DRILL, RE-ENTER, DEEPEN, PLUGBACK, OR ADD A ZONE

1. Operator Name and Address COG Operating LLC 2208 West Main Street Artesia, NM 88210		2. OGRID Number 229137	
3. API Number 30-025-40944		4. Well No 1.	
5. Property Code 3961	6. Property Name Corazon 4 State SWD		

7. Surface Location

UL - Lot	Section	Township	Range	Lot Idn	Feet from	N/S Line	Feet From	E/W Line	County
10	4	21S	33E		3800	North	2500	East	Lea

8. Proposed Bottom Hole Location

UL - Lot	Section	Township	Range	Lot Idn	Feet from	N/S Line	Feet From	E/W Line	County

9. Pool Information

Pool Name SWD: Delaware CHERY CANYON - BRUSHY CANYON	Pool Code 96100 97996
---	-----------------------------

Additional Well Information

11. Work Type New Well	12. Well Type SWD	13. Cable/Rotary	14. Lease Type State	15. Ground Level Elevation 3804.7'
16. Multiple N	17. Proposed Depth 7250	18. Formation Delaware	19. Contractor	20. Spud Date 1/18/2013
Depth to Ground water		Distance from nearest fresh water well		Distance to nearest surface water

21. Proposed Casing and Cement Program

Type	Hole Size	Casing Size	Casing Weight/ft	Setting Depth	Sacks of Cement	Estimated TOC
Surface	17.5	13.375	54.5	1800	1150	
Intrmd	12.25	9.625	40	5500	1675	
Open Hole	8.75	7	26	7250	675	2500

Casing/Cement Program: Additional Comments

Plan to drill a 17-1/2" hole to 1800' with Fresh Water. Run 13-3/8", 54.5#, J-55 csg and cmt to surface. Drill 12-1/4" hole to 5500' with Brine, and run 9-5/8", 40#, J55/N80 and cement to surface in 2 stages. Drill 8-3/4" hole to 7250' with cut-brine and run 7", 26#, J55 and tie back cement 3,000' into previous casing string.

22. Proposed Blowout Prevention Program

Type	Working Pressure	Test Pressure	Manufacturer
Double Ram	3000	3000	Cameron

Permit Expires 2 Years From Approval
Date Unless Drilling Underway

23. I hereby certify that the information given above is true and complete to the best of my knowledge and belief. I further certify that I have complied with 19.15.14.9 (A) NMAC <input type="checkbox"/> and/or 19.15.14.9 (B) NMAC <input type="checkbox"/> , if applicable. Signature: <i>Mayte Reyes</i>		OIL CONSERVATION DIVISION	
Printed name: Mayte Reyes		Approved By: <i>[Signature]</i>	
Title: Regulatory Analyst		Title: Petroleum Engineer	
E-mail Address: mreyes1@concho.com		Approved Date: JAN 30 2013	
Date: 1/9/2013		Expiration Date:	
Phone: 575-748-6945		Conditions of Approval Attached	

DISTRICT I
1625 N. FRENCH DR., HOBBS, NM 88240

State of New Mexico
Energy, Minerals and Natural Resources Department

DISTRICT II
1301 W. GRAND AVENUE, ARTESIA, NM 88210

DISTRICT III
1000 RIO BRAZOS RD., AZTEC, NM 87410

DISTRICT IV
11885 S. ST. FRANCIS DR., SANTA FE, NM 87505

OIL CONSERVATION DIVISION
11885 SOUTH ST. FRANCIS DR.
Santa Fe, New Mexico 87505

Form C-102
Revised October 12, 2010
Submit to Appropriate District Office
State Lease - 4 Copies
Fee Lease - 3 Copies

WELL LOCATION AND ACREAGE DEDICATION PLAT

☐ AMENDED REPORT

API Number 30025-40944	Pool Code 97996	Pool Name SWD; CHERRY CANYON - PAULINY CANYON
Property Code 39617	Property Name CORAZON 4 STATE SWD	Well Number 1
GRID No. 229137	Operator Name COG OPERATING, LLC	Elevation 3804.7'

Surface Location

UL or lot No.	Section	Township	Range	Lot Idn	Feet from the	North/South line	Feet from the	East/West line	County
10	4	21-S	33-E		3800	NORTH	2500	EAST	LEA

Bottom Hole Location If Different From Surface

UL or lot No.	Section	Township	Range	Lot Idn	Feet from the	North/South line	Feet from the	East/West line	County
Dedicated Acres	Joint or Infill	Consolidation Code	Order No.						

NO ALLOWABLE WILL BE ASSIGNED TO THIS COMPLETION UNTIL ALL INTERESTS HAVE BEEN CONSOLIDATED
OR A NON-STANDARD UNIT HAS BEEN APPROVED BY THE DIVISION

LOT 4 Ac.=39.09	LOT 3 Ac.=39.12	LOT 2 Ac.=39.15	LOT 1 Ac.=39.19
LOT 5 Ac.=39.98	LOT 6 Ac.=39.98	LOT 7 Ac.=39.98 3800'	LOT 8 Ac.=39.98
LOT 12 Ac.=39.97	LOT 11 Ac.=39.97	LOT 10 Ac.=39.97 S.L.	LOT 9 Ac.=39.97 2500'
LOT 13 Ac.=39.97	LOT 14 Ac.=39.97	LOT 15 Ac.=39.97	LOT 16 Ac.=39.97

NAD 27
SURFACE LOCATION
Y=550718.6 N
X=733267.1 E
LAT.=32.511759° N
LONG.=103.576622° W

OPERATOR CERTIFICATION

I hereby certify that the information herein is true and complete to the best of my knowledge and belief, and that this organization either owns a working interest or unleased mineral interest in the land including the proposed bottom hole location or has a right to drill this well at this location pursuant to a contract with an owner of such mineral or working interest, or to a voluntary pooling agreement or a compulsory pooling order heretofore entered by the division.

Signature

Date

Printed Name

SURVEYOR CERTIFICATION

I hereby certify that the well location shown on this plat was plotted from field notes of actual surveys made by me or under my supervision, and that the same is true and correct to the best of my belief.

NOVEMBER 20, 2012

Date Surveyed

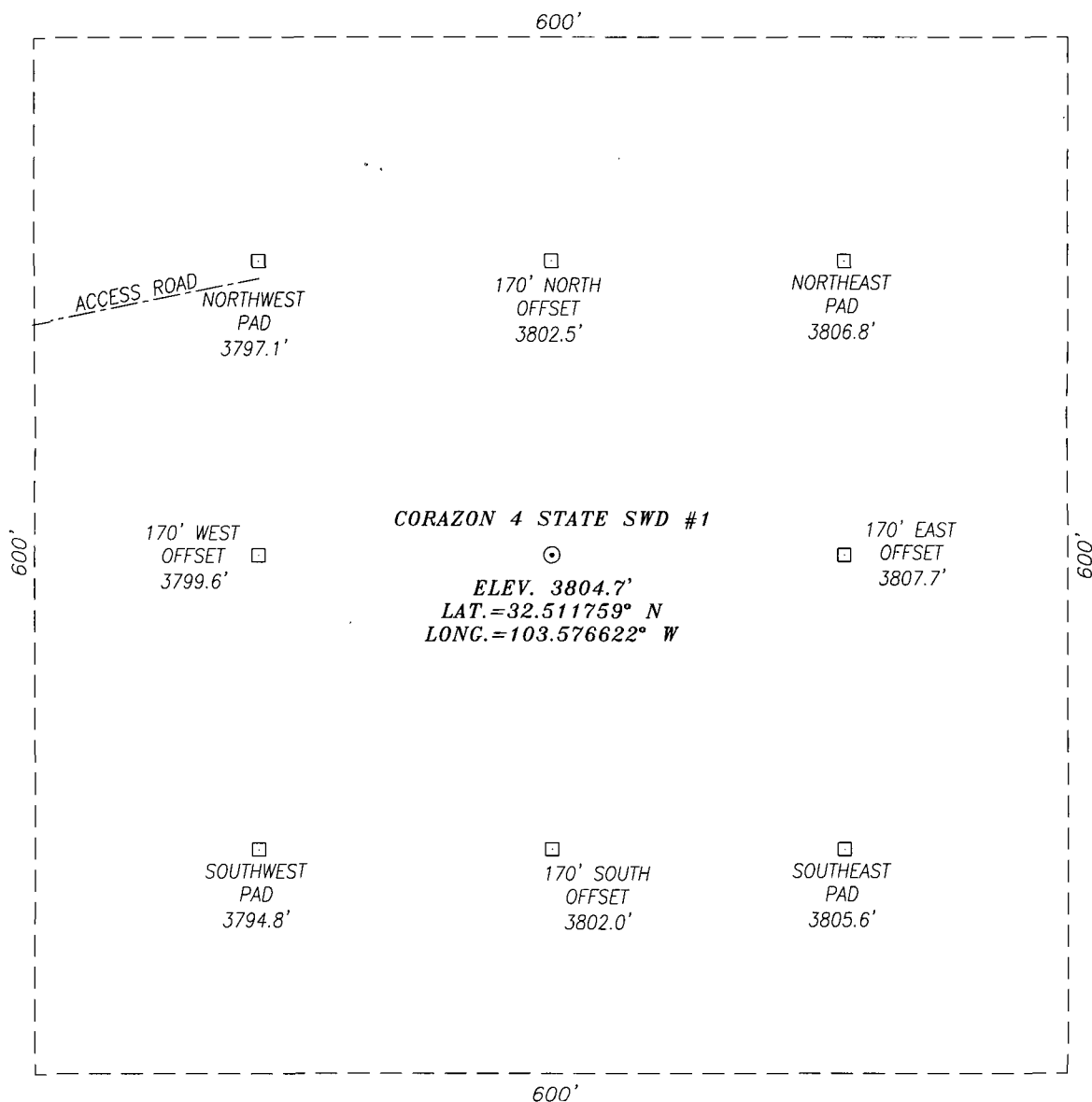
Signature & Seal of Professional Surveyor



Chad Harcrow 12-21-12

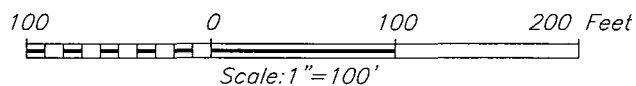
Certificate No. CHAD HARCROW 17777
W.O. # 12-123 2012-037

SECTION 4, TOWNSHIP 21 SOUTH, RANGE 33 EAST, N.M.P.M.,
LEA COUNTY NEW MEXICO



DIRECTIONS TO LOCATION:

TRAVELING EAST ON HWY 176 TURN RIGHT (SOUTH) 0.1 MILES PAST
MILE MARKER 9 AND GO 0.7 MILES TO A PROPOSED ROAD ON THE
LEFT (WEST) PROPOSED WELL IS APPROX. 890' WEST.



HARCROW SURVEYING
1107 WATSON, ARTESIA N.M. 88210
PH: (575) 513-2570
FAX: (575) 746-2808
EST. 2007

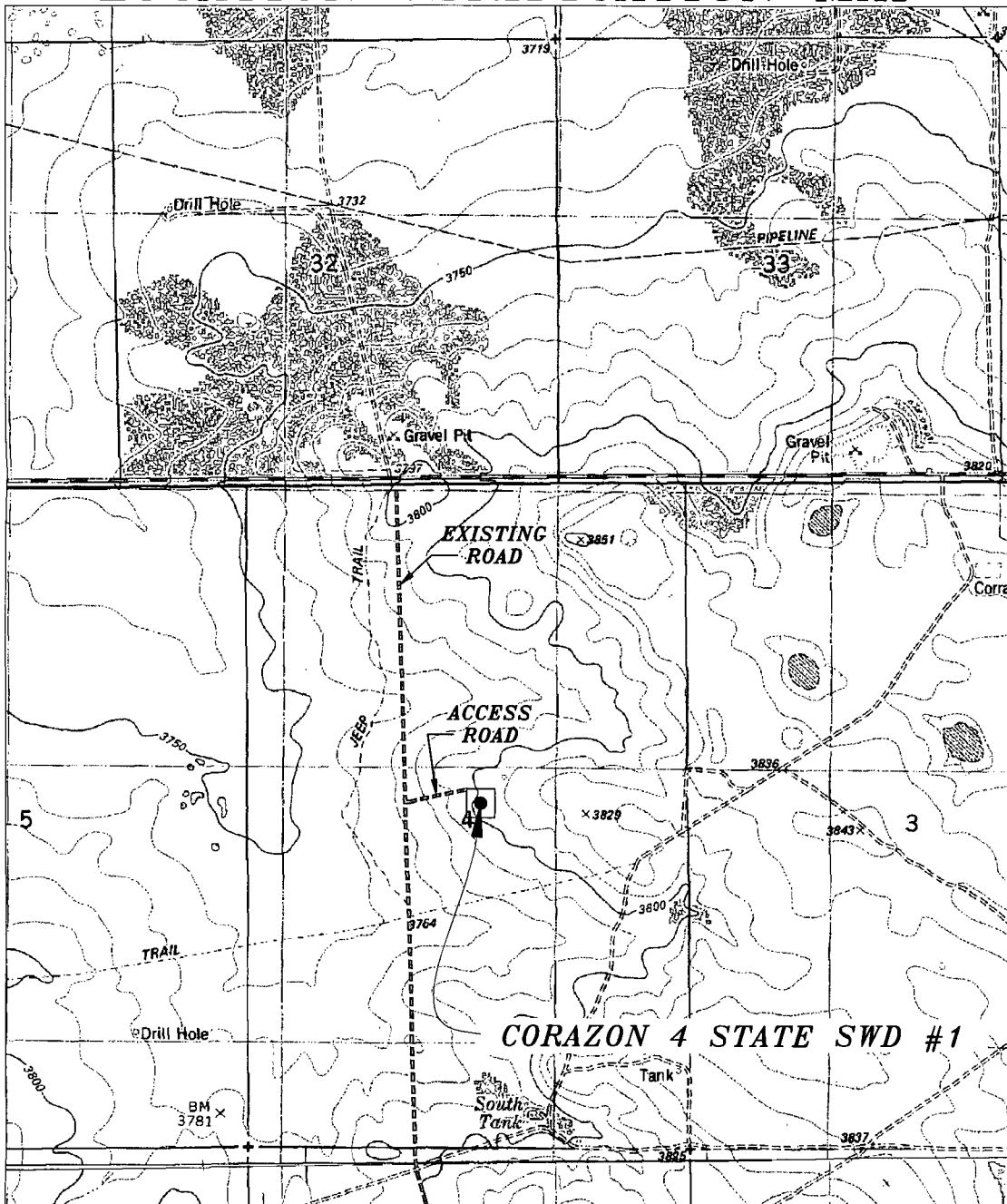


COG OPERATING, LLC

CORAZON 4 STATE SWD #1 WELL
LOCATED 3800 FEET FROM THE NORTH LINE
AND 2500 FEET FROM THE EAST LINE OF SECTION 4,
TOWNSHIP 21 SOUTH, RANGE 33 EAST, N.M.P.M.,
LEA COUNTY, NEW MEXICO

SURVEY DATE: NOVEMBER 20, 2012	PAGE: 1 OF 1
DRAFTING DATE: DECEMBER 4, 2012	
APPROVED BY: CH	DRAWN BY: DDSI FILE: 12-123

LOCATION VERIFICATION MAP



SCALE: 1" = 2000'

CONTOUR INTERVAL: 10'

SEC. 4 TWP. 21-S RGE. 33-E
 SURVEY N.M.P.M.
 COUNTY LEA STATE NEW MEXICO
 DESCRIPTION 3800' FNL & 2500' FEL
 ELEVATION 3805'
 OPERATOR COG OPERATING, LLC
 LEASE CORAZON 4 STATE
 U.S.G.S. TOPOGRAPHIC MAP
LEA, N.M.

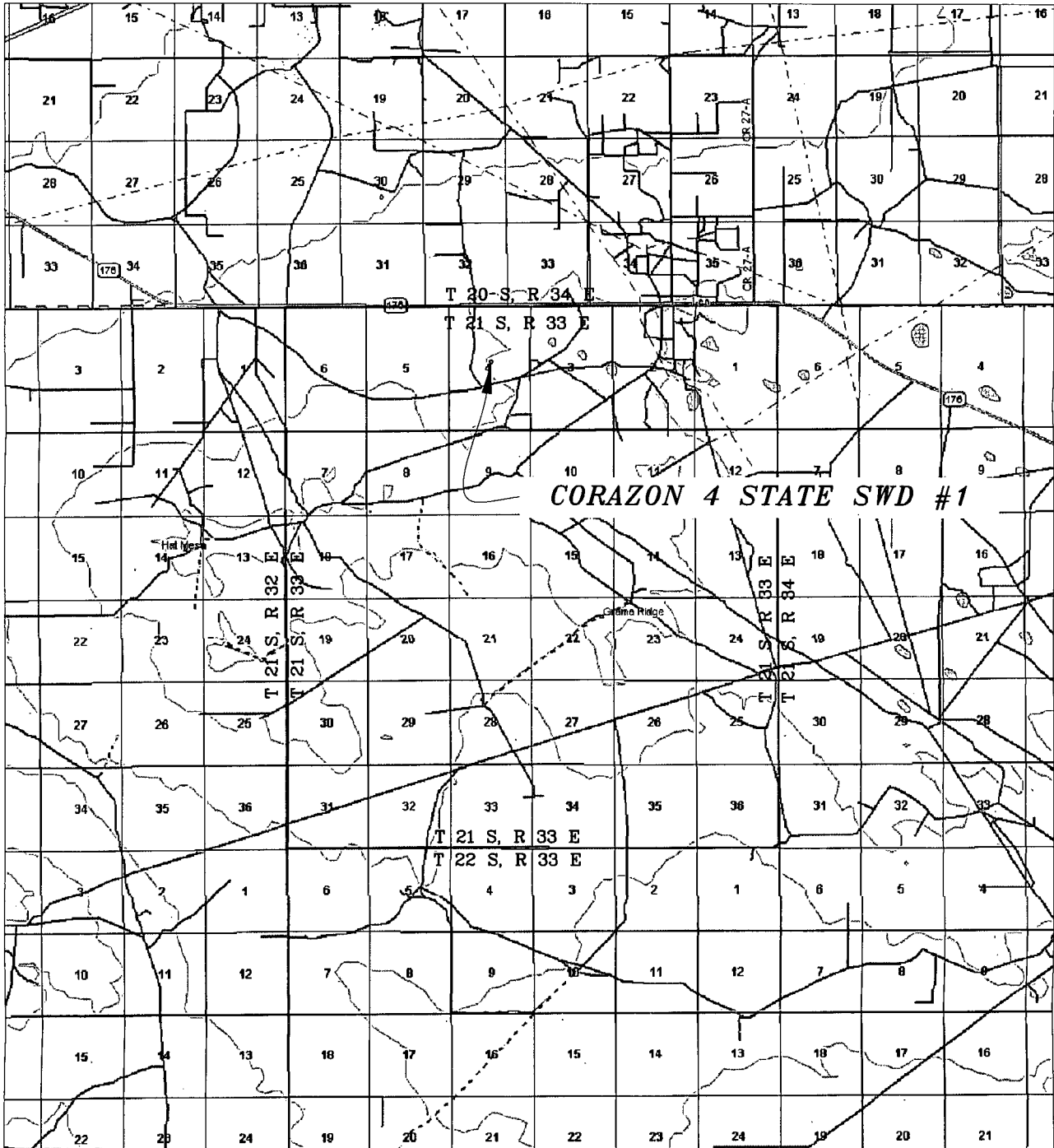
HARCROW SURVEYING
 1107 WATSON, ARTESIA N.M. 88210
 PH: (575) 513-2570
 FAX: (575) 746-2808
 EST. 2007



COG OPERATING, LLC

SURVEY DATE: NOVEMBER 20, 2012	PAGE: 1 OF 1
DRAFTING DATE: DECEMBER 06, 2012	
APPROVED BY: CH	DRAWN BY: DDSI FILE: 12-123

VICINITY MAP



SEC. 4 TWP. 21-S RGE. 33-E
 SURVEY N.M.P.M.
 COUNTY LEA STATE NEW MEXICO
 DESCRIPTION 3800' FNL & 2500' FEL
 ELEVATION 3805'
 OPERATOR COG OPERATING, LLC
 LEASE CORAZON 4 STATE SWD

SCALE: 1" = 2 MILES

HARCROW SURVEYING
 1107 WATSON, ARTESIA N.M. 88210
 PH: (575) 513-2570
 FAX: (575) 746-2808
 EST. 2007



COG OPERATING, LLC

SURVEY DATE: NOVEMBER 20, 2012	PAGE: 1 OF 1
DRAFTING DATE: DECEMBER 06, 2012	
APPROVED BY: CH	DRAWN BY: DDSI FILE: 12-123