

District I
1625 N. French Dr., Hobbs, NM 88240
Phone: (575) 393-6161 Fax: (575) 393-0720
District II
811 S. First St., Artesia, NM 88210
Phone: (575) 748-1283 Fax: (575) 748-9720
District III
1000 Rio Brazos Road, Aztec, NM 87410
Phone: (505) 334-6178 Fax: (505) 334-6170
District IV
1220 S. St. Francis Dr., Santa Fe, NM 87505
Phone: (505) 476-3460 Fax: (505) 476-3462

State of New Mexico
Energy Minerals and Natural Resources
Oil Conservation Division
1220 South St. Francis Dr.
Santa Fe, NM 87505

HOBBS OCD
JAN 24 2013
RECEIVED

Form C-101
Revised November 14, 2012

☐ AMENDED REPORT

APPLICATION FOR PERMIT TO DRILL, RE-ENTER, DEEPEN, PLUGBACK, OR ADD A ZONE

¹ Operator Name and Address COG Operating LLC 2208 West Main Street Artesia, NM 88210		² OGRID Number 229137 ³ API Number 30-025-40945	
⁴ Property Code 38601	⁵ Property Name Corazon State Unit	⁶ Well No 2H	

7. Surface Location

UL - Lot	Section	Township	Range	Lot Idn	Feet from	N/S Line	Feet From	E/W Line	County
O	3	21S	33E		100	South	1980	East	Lea

8. Proposed Bottom Hole Location

UL - Lot	Section	Township	Range	Lot Idn	Feet from	N/S Line	Feet From	E/W Line	County
2	3	21S	33E		330	North	1980	East	Lea

9. Pool Information

⁷ Well Name Wildcat Bone Spring WC-025 G-08 5213304D; BONE SPRING	⁸ Pool Code 97895 97895
--	--

Additional Well Information

¹¹ Work Type New Well	¹² Well Type Oil	¹³ Cable/Rotary	¹⁴ Lease Type State	¹⁵ Ground Level Elevation 3820'
¹⁶ Multiple N	¹⁷ Proposed Depth 18919	¹⁸ Formation Bone Spring	¹⁹ Contractor	²⁰ Spud Date 1/29/2013
Depth to Ground water		Distance from nearest fresh water well		Distance to nearest surface water

21. Proposed Casing and Cement Program

Type	Hole Size	Casing Size	Casing Weight/ft	Setting Depth	Sacks of Cement	Estimated TOC
Surface	17.5	13.375	54.5	1750	1100	
Intrmd	12.25	9.625	36	5500	1400	
Open Hole	7.875	5.5	17	18919	2950	5300

Casing/Cement Program: Additional Comments

Plan to drill a 17-1/2" hole to 1750' with Fresh Water. Run 13-3/8", 54.5#, J-55 csg and cmt to surface. Drill 12-1/4" hole to 5500' with Brine, and run 9-5/8", 36# J55(40# f/3500' - 5500') and cement to surface. Drill 7-7/8" hole with cut brine to 10,800'. Kick off and drill 7-7/8" curve and lateral to approx 18,919' MD. Run 5-1/2", 17#, P-110 csg and cement to 5300' in 1 stage.

22. Proposed Blowout Prevention Program Permit Expires 2 Years From Approval

Type	Working Pressure	Test Pressure	Manufacturer
Double Ram	3000	3000	Cameron

²³ I hereby certify that the information given above is true and complete to the best of my knowledge and belief. I further certify that I have complied with 19.15.14.9 (A) NMAC <input checked="" type="checkbox"/> and/or 19.15.14.9 (B) NMAC <input checked="" type="checkbox"/> if applicable. Signature: <i>Mayte Reyes</i> Printed name: Mayte Reyes Title: Regulatory Analyst E-mail Address: mreyes1@concho.com Date: 1/23/2013	<div style="text-align: center; border-bottom: 1px solid black; padding-bottom: 5px;">OIL CONSERVATION DIVISION</div> Approved By: <i>[Signature]</i> Title: PETROLEUM ENGINEER Approved Date: JAN 31 2013 Expiration Date: Conditions of Approval Attached
---	---

FEB 04 2013

DISTRICT I
1625 N. FRENCH DR., HOBBS, NM 88240

State of New Mexico
Energy, Minerals and Natural Resources Department

JAN 24 2013

Form C-102

DISTRICT II
1501 W. GRAND AVENUE, ARTESIA, NM 88210

OIL CONSERVATION DIVISION
11885 SOUTH ST. FRANCIS DR.
Santa Fe, New Mexico 87505

Submit to Appropriate District Office
State Lease - 4 Copies
Fee Lease - 3 Copies

DISTRICT III
1000 RIO BRAZOS RD., AZTEC, NM 87410

DISTRICT IV
11885 S. ST. FRANCIS DR., SANTA FE, NM 87505

WELL LOCATION AND ACREAGE DEDICATION PLAT

☐ AMENDED REPORT

API Number 30-025-40945	Pool Code 97895	Pool Name Wildcat G-08 S213304D; Bone Spring
Property Code 38601	Property Name CORAZON STATE UNIT	Well Number 2H
OGRID No. 229137	Operator Name COG OPERATING, LLC	Elevation 3820.0'

Surface Location

UL or lot No.	Section	Township	Range	Lot Idn	Feet from the	North/South line	Feet from the	East/West line	County
0	3	21-S	33-E		100	SOUTH	1980	EAST	LEA

Bottom Hole Location If Different From Surface

UL or lot No.	Section	Township	Range	Lot Idn	Feet from the	North/South line	Feet from the	East/West line	County
2	3	21-S	33-E		330	NORTH	1980	EAST	LEA

Dedicated Acres 239.73	Joint or Infill	Consolidation Code	Order No.
----------------------------------	-----------------	--------------------	-----------

NO ALLOWABLE WILL BE ASSIGNED TO THIS COMPLETION UNTIL ALL INTERESTS HAVE BEEN CONSOLIDATED
OR A NON-STANDARD UNIT HAS BEEN APPROVED BY THE DIVISION

N 1/4 CORNER
Y=554554.9 N
X=738380.0 E

1/16 CORNER
Y=554544.7 N
X=737058.9 E

PROPOSED BOTTOM HOLE LOCATION
Y=554230.1 N
X=739046.0 E
LAT.=32.521297° N
LONG.=103.557794° W

SURFACE LOCATION
Y=546754.3 N
X=739114.2 E
LAT.=32.500747° N
LONG.=103.557749° W

OPERATOR CERTIFICATION

I hereby certify that the information herein is true and complete to the best of my knowledge and belief, and that this organization either owns a working interest or unleased mineral interest in the land including the proposed bottom hole location or has a right to drill this well at this location pursuant to a contract with an owner of such mineral or working interest, or to a voluntary pooling agreement or a compulsory pooling order heretofore entered by the division.

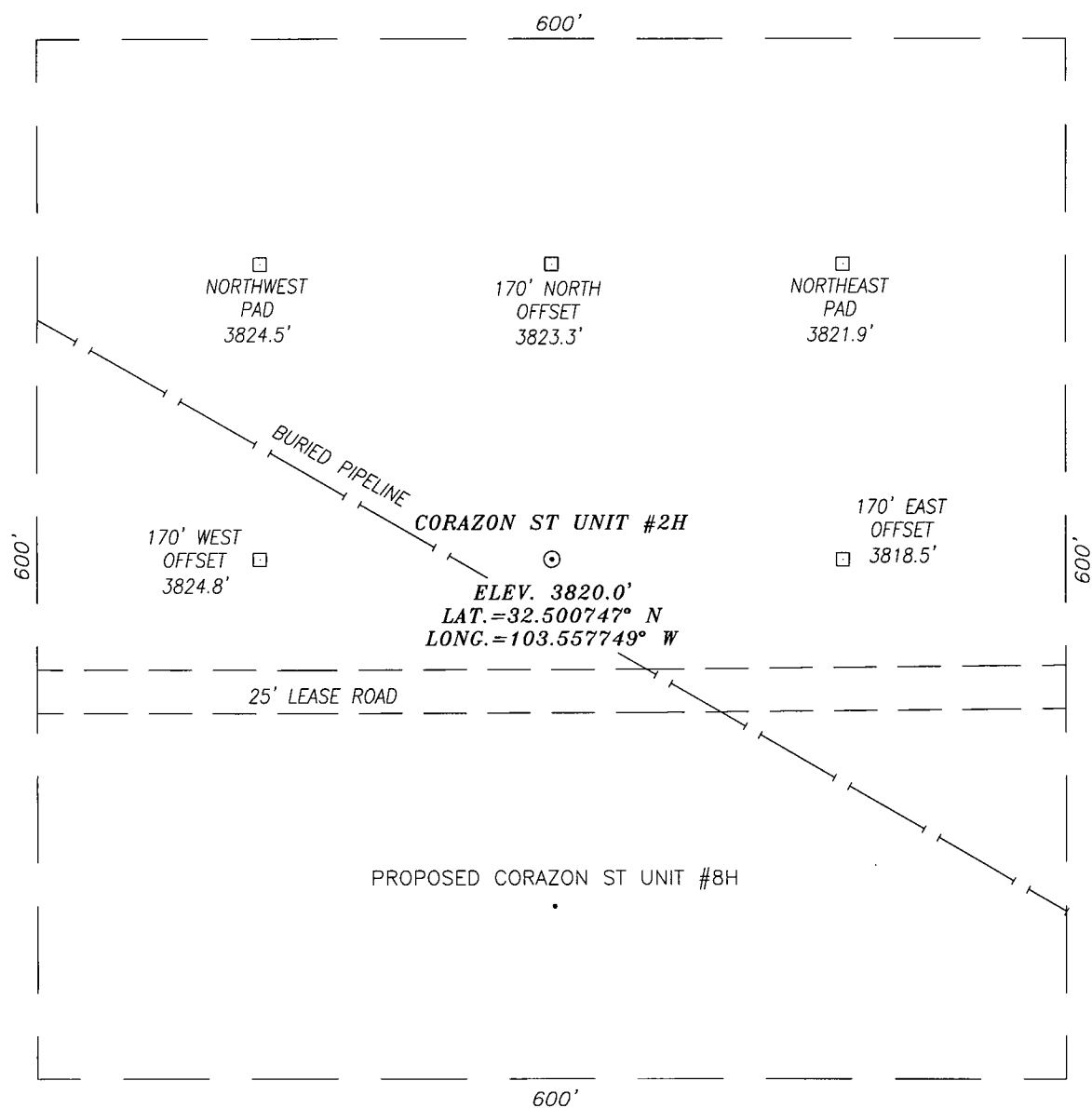
Melanie J. Parker 1/23/13
Signature Date
Melanie J. Parker
Printed Name

SURVEYOR CERTIFICATION

I hereby certify that the well location shown on this plat was plotted from field notes of actual surveys made by me or under my supervision, and that the same is true and correct to the best of my belief.

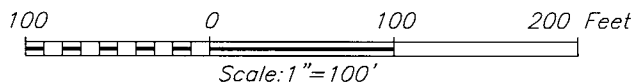
OCTOBER 2012
Date Surveyed
Signature of Surveyor
Professional Surveyor
17777
12-131
Certificate No. 17777
2012-037

SECTION 3, TOWNSHIP 21 SOUTH, RANGE 33 EAST, N.M.P.M.,
LEA COUNTY NEW MEXICO



DIRECTIONS TO LOCATION

HEADING EAST ON HWY. 176 TURN RIGHT 0.1 MILES PAST MILE MARKER 9
ONTO A CALICHE LEASE ROAD. CONTINUE FOR APPROX. 2.9 MILES THEN
TURN RIGHT ONTO A 25' LEASE ROAD, FOLLOW 25' LEASE ROAD FOR
APPROX. 0.2 MILES LOCATION IS APPROX. 90 FEET NORTH.



HARCROW SURVEYING
1107 WATSON, ARTESIA N.M. 88210
PH: (575) 513-2570
FAX: (575) 746-2808
EST. 2007

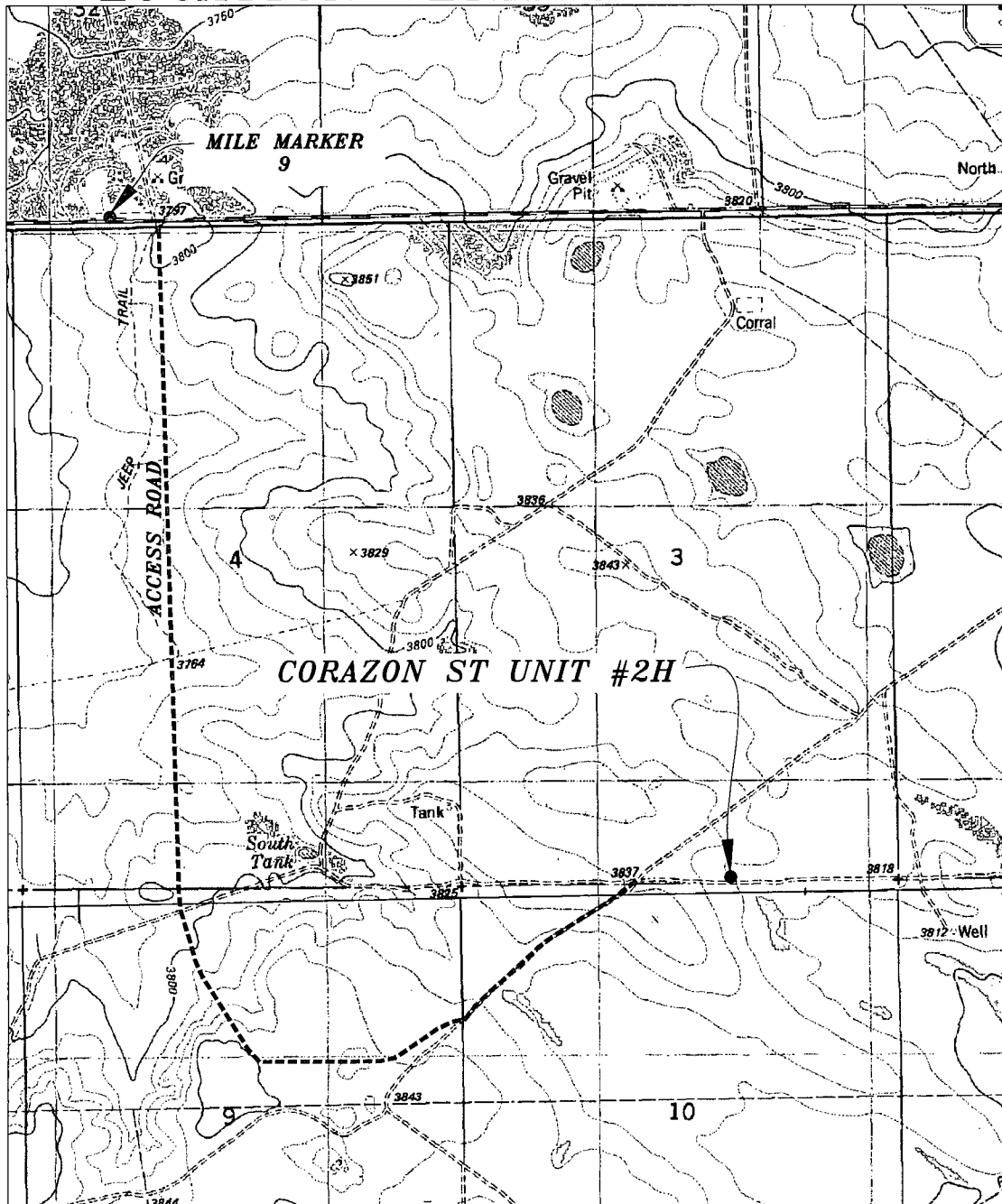


COG OPERATING, LLC

CORAZON ST UNIT #2H WELL
LOCATED 100 FEET FROM THE SOUTH LINE
AND 1980 FEET FROM THE EAST LINE OF SECTION 3,
TOWNSHIP 21 SOUTH, RANGE 33 EAST, N.M.P.M.,
LEA COUNTY, NEW MEXICO

SURVEY DATE: SEPTEMBER 27, 2012	PAGE: 1 OF 1
DRAFTING DATE: OCTOBER 1, 2012	
APPROVED BY: CH	DRAWN BY: DDSI FILE: 12-131

LOCATION VERIFICATION MAP



SCALE: 1" = 2000'

CONTOUR INTERVAL: 10'

SEC. 3 TWP. 21-S RGE. 33-E
 SURVEY N.M.P.M.
 COUNTY LEA STATE NEW MEXICO
 DESCRIPTION 100' FSL & 1980' FEL
 ELEVATION 3820'
 OPERATOR COG OPERATING, LLC
 LEASE CORAZON ST UNIT
 U.S.G.S. TOPOGRAPHIC MAP
 LEA, N.M.

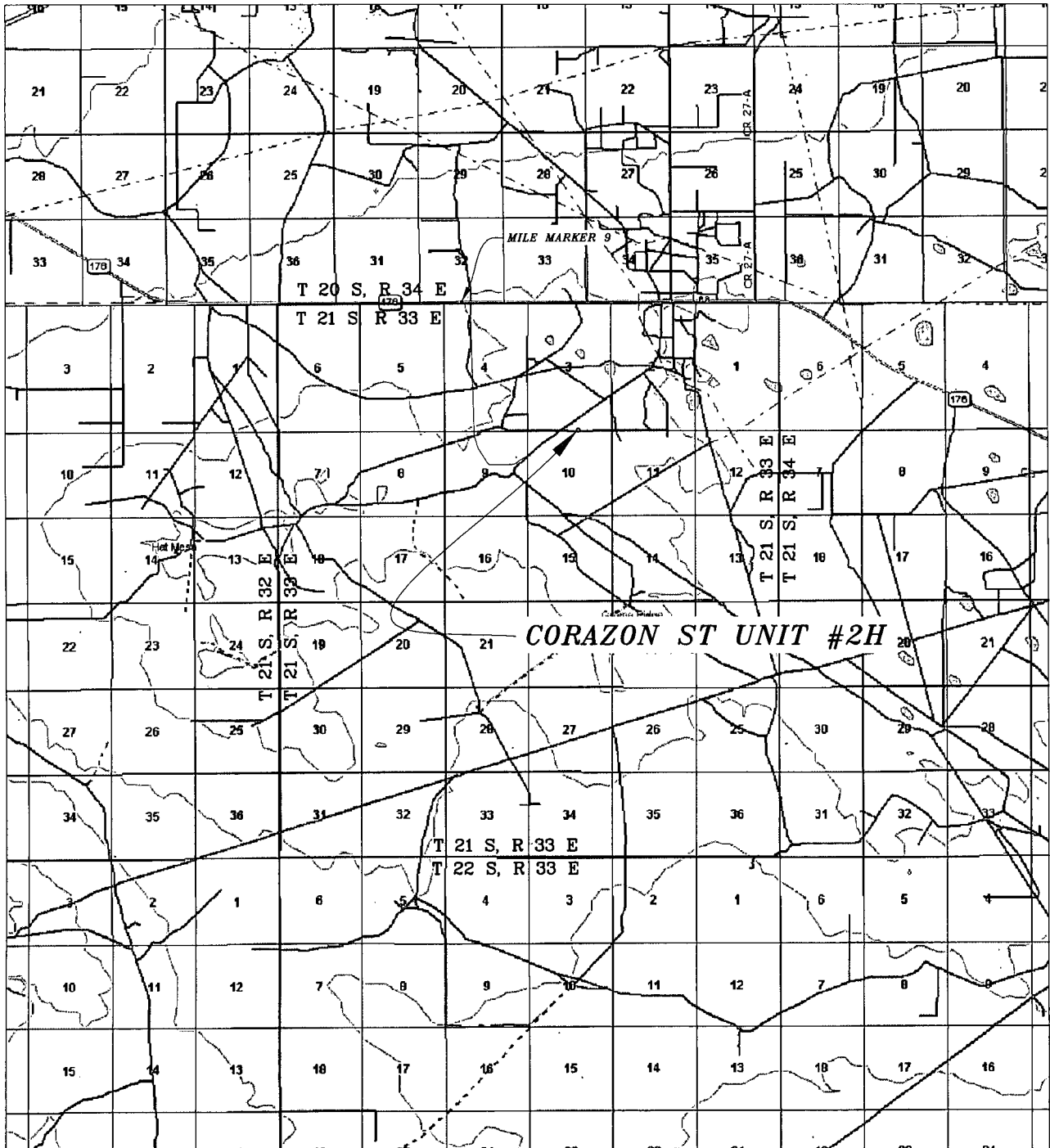
HARCROW SURVEYING
 1107 WATSON, ARTESIA N.M. 88210
 PH: (575) 513-2570
 FAX: (575) 746-2808
 EST. 2007



COG OPERATING, LLC

SURVEY DATE: SEPTEMBER 27, 2012	PAGE: 1 OF 1
DRAFTING DATE: OCTOBER 1, 2012	
APPROVED BY: CH	DRAWN BY: DDSI FILE: 12-131

VICINITY MAP



SEC. 3 TWP. 21-S RGE. 33-E
 SURVEY N.M.P.M.
 COUNTY LEA STATE NEW MEXICO
 DESCRIPTION 100' FSL & 1980' FEL
 ELEVATION 3820'
 OPERATOR COG OPERATING, LLC
 LEASE CORAZON ST UNIT

SCALE: 1" = 2 MILES



HARCROW SURVEYING
 1107 WATSON, ARTESIA N.M. 88210
 PH: (575) 513-2570
 FAX: (575) 746-2808
 EST. 2007

COG OPERATING, LLC

SURVEY DATE: SEPTEMBER 27, 2012	PAGE: 1 OF 1
DRAFTING DATE: OCTOBER 1, 2012	
APPROVED BY: CH	DRAWN BY: DDSI FILE: 12-131