

District I
1625 N. French Dr., Hobbs, NM 88240
Phone: (575) 393-6161 Fax: (575) 393-0720
District II
811 S. First St., Artesia, NM 88210
Phone: (575) 748-1283 Fax: (575) 748-9720
District III
1000 Rio Brazos Road, Aztec, NM 87410
Phone: (505) 334-6178 Fax: (505) 334-6170
District IV
1220 S. St. Francis Dr., Santa Fe, NM 87505
Phone: (505) 476-3460 Fax: (505) 476-3462

State of New Mexico
Energy Minerals and Natural Resources

Form C-101
Revised November 14, 2012

Oil Conservation Division

1220 South St. Francis Dr.

Santa Fe, NM 87505

HOBBS OCD

JAN 24 2013

☐ AMENDED REPORT

APPLICATION FOR PERMIT TO DRILL, RE-ENTER, DEEPEN, PLUGBACK, OR ADD A ZONE

Operator Name and Address COG Operating LLC 2208 West Main Street Artesia, NM 88210		OGRID Number 229137
Property Code 38601		API Number 30 025-40947
Property Name Corazon State Unit		Well No 5H

7. Surface Location

UL - Lot	Section	Township	Range	Lot Idn	Feet from	N/S Line	Feet From	E/W Line	County
M	3	21S	33E		100	South	330	West	Lea

8. Proposed Bottom Hole Location

UL - Lot	Section	Township	Range	Lot Idn	Feet from	N/S Line	Feet From	E/W Line	County
4	3	21S	33E		330	North	380	West	Lea

9. Pool Information

Pool Name	Pool Code
Wildcat; Bone Spring	97895

Additional Well Information

Work Type New Well	Well Type Oil	Cable/Rotary	Lease Type State	Ground Level Elevation 3839.9'
Multiple N	Proposed Depth 18919	Formation Bone Spring	Contractor	Spud Date 1/29/2013
Depth to Ground water		Distance from nearest fresh water well		Distance to nearest surface water

21. Proposed Casing and Cement Program

Type	Hole Size	Casing Size	Casing Weight/ft	Setting Depth	Sacks of Cement	Estimated TOC
Surface	17.5	13.375	54.5	1750	1100	
Intrmd	12.25	9.625	36	5500	1400	
Open Hole	7.875	5.5	17	18919	2950	5300

Casing/Cement Program: Additional Comments

Plan to drill a 17-1/2" hole to 1750' with Fresh Water. Run 13-3/8", 54.5#, J-55 csg and cmt to surface. Drill 12-1/4" hole to 5500' with Brine, and run 9-5/8", 36# J55(40# f/3500' - 5500') and cement to surface. Drill 7-7/8" hole with cut brine to 10,800'. Kick off and drill 7-7/8" curve and lateral to approx 18,919' MD. Run 5-1/2", 17#, P-110 csg and cement to 5300' in 1 stage.

22. Proposed Blowout Prevention Program

Permit Expires 2 Years From Approval Date Unless Drilling Underway

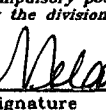
Type	Working Pressure	Test Pressure	Manufacturer
Double Ram	3000	3000	Cameron

23. I hereby certify that the information given above is true and complete to the best of my knowledge and belief. I further certify that I have complied with 19.15.14.9 (A) NMAC <input checked="" type="checkbox"/> and/or 19.15.14.9 (B) NMAC <input checked="" type="checkbox"/> if applicable. Signature: <i>Mayte Reyes</i>		OIL CONSERVATION DIVISION	
Printed name: Mayte Reyes		Approved By: <i>[Signature]</i>	
Title: Regulatory Analyst		Title: PETROLEUM ENGINEER	
E-mail Address: mreyes1@concho.com		Approved Date: JAN 31 2013 Expiration Date:	
Date: 1/23/2013		Conditions of Approval Attached	
Phone: 575-748-6945			

FEB 04 2013

OPERATOR CERTIFICATION

I hereby certify that the information herein is true and complete to the best of my knowledge and belief, and that this organization either owns a working interest or unleased mineral interest in the land including the proposed bottom hole location or has a right to drill this well at this location pursuant to a contract with an owner of such mineral or working interest, or to a voluntary pooling agreement or a compulsory pooling order heretofore entered by the division.

 11/23/13

Signature _____ Date _____

Melanie J. Parker

Printed Name _____


SURVEYOR CERTIFICATION

I hereby certify that the well location shown on this plat was plotted from field notes of actual surveys made by me or under my supervision, and that the same is true and correct to the best of my belief.

OCTOBER 01, 2012

Date Surveyed _____

Signature & Seal of
Professional Surveyor

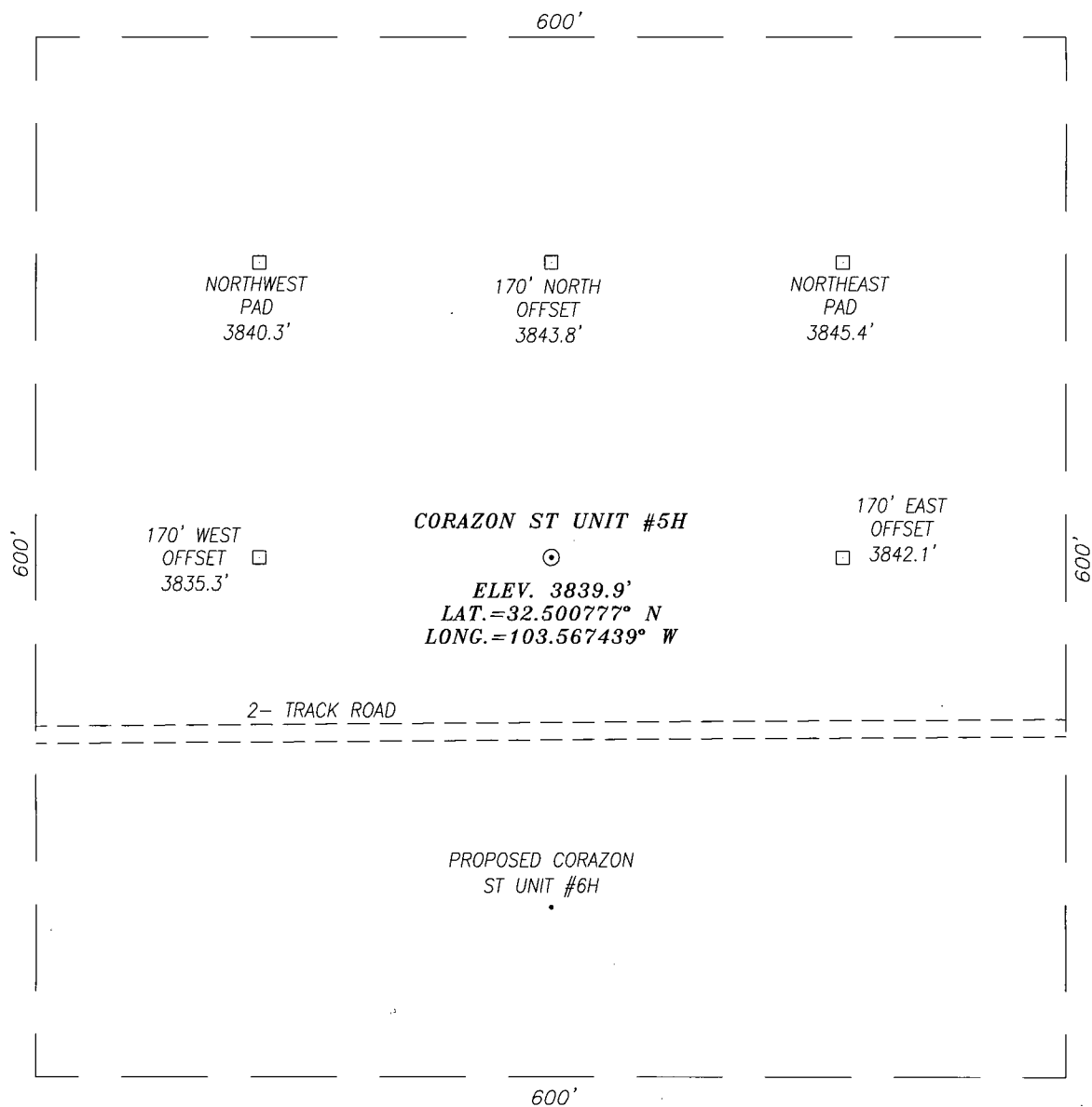
 17777 18-8-12

12-133

Certificate No. CHAD HARCROW 17777

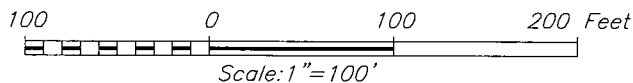
2012-037

SECTION 3, TOWNSHIP 21 SOUTH, RANGE 33 EAST, N.M.P.M.,
LEA COUNTY NEW MEXICO



DIRECTIONS TO LOCATION:

HEADING EAST ON HWY. 176 TURN RIGHT 0.1 MILES PAST MILE MARKER 9
ONTO A CALICHE LEASE ROAD. CONTINUE FOR APPROX. 2.9 MILES THEN
TURN LEFT ONTO A 2-TRACK ROAD. FOLLOW 2-TRACK ROAD FOR APPROX.
0.4 MILES AND WELL IS APPROX. 100 FEET NORTH.



HARCROW SURVEYING
1107 WATSON, ARTESIA N.M. 88210
PH: (575) 513-2570
FAX: (575) 746-2808
EST. 2007

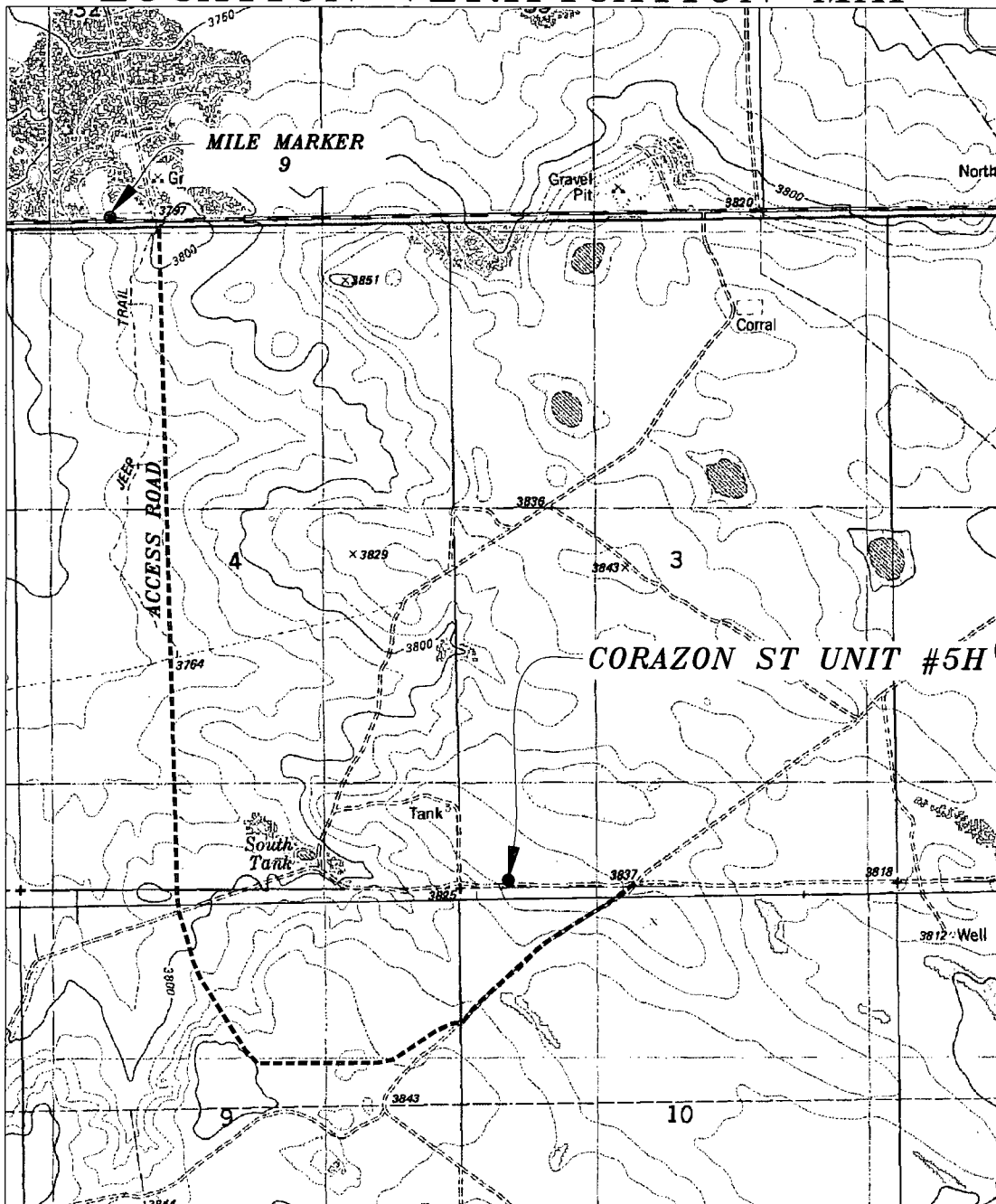


COG OPERATING, LLC

CORAZON ST UNIT #5H WELL
LOCATED 100 FEET FROM THE SOUTH LINE
AND 330 FEET FROM THE WEST LINE OF SECTION 3,
TOWNSHIP 21 SOUTH, RANGE 33 EAST, N.M.P.M.,
LEA COUNTY, NEW MEXICO

SURVEY DATE: SEPTEMBER 27, 2012	PAGE: 1 OF 1
DRAFTING DATE: OCTOBER 01, 2012	
APPROVED BY: CH	DRAWN BY: DDSI FILE: 12-133

LOCATION VERIFICATION MAP



SCALE: 1" = 2000'

CONTOUR INTERVAL: 10'

SEC. 3 TWP. 21-S RGE. 33-E
 SURVEY N.M.P.M.
 COUNTY LEA STATE NEW MEXICO
 DESCRIPTION 100' FSL & 330' FWL
 ELEVATION 3840'
 OPERATOR COG OPERATING, LLC
 LEASE CORAZON ST UNIT
 U.S.G.S. TOPOGRAPHIC MAP
LEA, N.M.

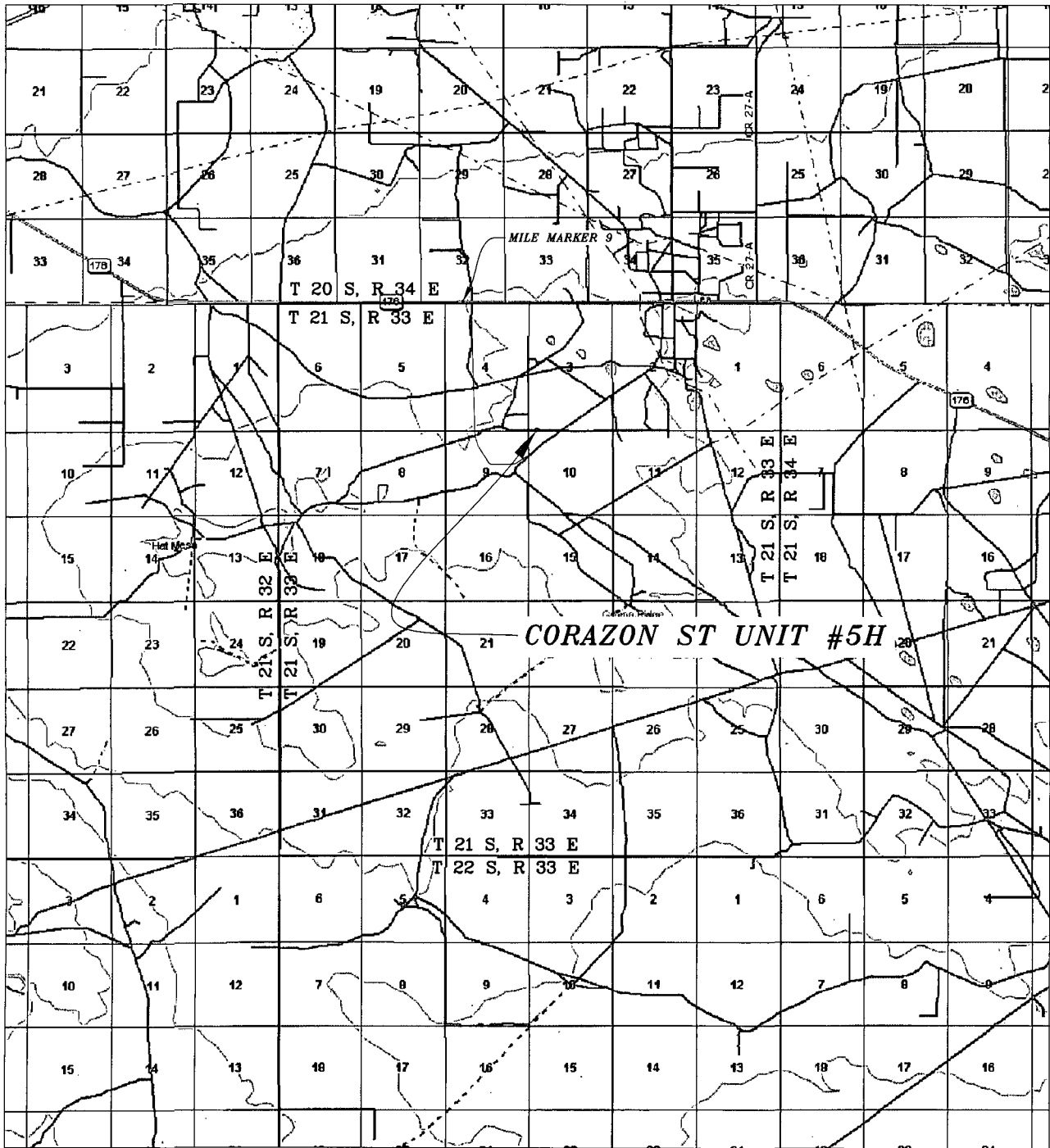
HARCROW SURVEYING
 1107 WATSON, ARTESIA N.M. 88210
 PH: (575) 513-2570
 FAX: (575) 746-2808
 EST. 2007



COG OPERATING, LLC

SURVEY DATE: SEPTEMBER 27, 2012	PAGE: 1 OF 1
DRAFTING DATE: OCTOBER 01, 2012	
APPROVED BY: CH	DRAWN BY: DDSI FILE: 12-133

VICINITY MAP



SEC. 3 TWP. 21-S RGE. 33-E
 SURVEY N.M.P.M.
 COUNTY LEA STATE NEW MEXICO
 DESCRIPTION 100' FSL & 330' FWL
 ELEVATION 3840'
 OPERATOR COG OPERATING, LLC
 LEASE CORAZON ST UNIT

SCALE: 1" = 2 MILES

HARCROW SURVEYING
 1107 WATSON, ARTESIA N.M. 88210
 PH: (575) 513-2570
 FAX: (575) 746-2808
 EST. 2007



COG OPERATING, LLC

SURVEY DATE: SEPTEMBER 27, 2012	PAGE: 1 OF 1
DRAFTING DATE: OCTOBER 01, 2012	
APPROVED BY: CH	DRAWN BY: DDSI FILE: 12-133