

District I
1625 N. French Dr., Hobbs, NM 88240
Phone: (575) 393-6161 Fax: (575) 393-0720
District II
811 S. First St., Artesia, NM 88210
Phone: (575) 748-1283 Fax: (575) 748-9720
District III
1000 Rio Brazos Road, Aztec, NM 87410
Phone: (505) 334-6178 Fax: (505) 334-6170
District IV
1220 S. St. Francis Dr., Santa Fe, NM 87505
Phone: (505) 476-3460 Fax: (505) 476-3462

State of New Mexico

Form C-101
Revised November 14, 2012

Energy Minerals and Natural Resources

HOBBS OCD

Oil Conservation Division

☐ AMENDED REPORT

JAN 24 2013

1220 South St. Francis Dr.

Santa Fe, NM 87505

RECEIVED

APPLICATION FOR PERMIT TO DRILL, RE-ENTER, DEEPEN, PLUGBACK, OR ADD A ZONE

1. Operator Name and Address COG Operating LLC 2208 West Main Street Artesia, NM 88210		2. OGRID Number 229137	
3. Property Code 38681		4. API Number 30-025-40418	
5. Property Name Corazon State Unit		6. Well No 6H	

7. Surface Location

UL - Lot	Section	Township	Range	Lot Idn	Feet from	N/S Line	Feet From	E/W Line	County
D	10	21S	33E		50	North	660	West	Lea

8. Proposed Bottom Hole Location

UL - Lot	Section	Township	Range	Lot Idn	Feet from	N/S Line	Feet From	E/W Line	County
M	10	21S	33E		330	South	660	West	Lea

9. Pool Information

Pool Name	Pool Code
Wildcat, Bone Spring	97895

Additional Well Information

11. Work Type New Well	12. Well Type Oil	13. Cable/Rotary	14. Lease Type State	15. Ground Level Elevation 3842.6'
16. Multiple N	17. Proposed Depth 18800'	18. Formation Bone Spring	19. Contractor	20. Spud Date 1/29/2013
Depth to Ground water		Distance from nearest fresh water well		Distance to nearest surface water

21. Proposed Casing and Cement Program

Type	Hole Size	Casing Size	Casing Weight/ft	Setting Depth	Sacks of Cement	Estimated TOC
Surface	17.5	13.375	54.5	1900	1100	
Intrmd	12.25	9.625	36	5500	1400	
Open Hole	7.875	5.5	17	18800	1600	5300

Casing/Cement Program: Additional Comments

Plan to drill a 17-1/2" hole to 1900' with Fresh Water. Run 13-3/8", 54.5#, J-55 csg and cmt to surface. Drill 12-1/4" hole to 5500' with Brine, and run 9-5/8", 36# J55 (40# f/3500' - 5500') and cement to surface. Drill 7-7/8" hole with cut brine to 11,600' then drill 7-7/8" lateral to approx 18,800' MD (11,615' TVD). Run 5-1/2", 17#, P-110 csg and cement to 5300'.

22. Proposed Blowout Prevention Program

Permit Expires 2 Years From Approval
Date Unless Drilling Underway

Type	Working Pressure	Test Pressure	Manufacturer
Double Ram	3000	3000	Cameron

23. I hereby certify that the information given above is true and complete to the best of my knowledge and belief. I further certify that I have complied with 19.15.14.9 (A) NMAC <input checked="" type="checkbox"/> and/or 19.15.14.9 (B) NMAC <input checked="" type="checkbox"/> , if applicable. Signature: <i>Mayte Reyes</i>		OIL CONSERVATION DIVISION	
Printed name: Mayte Reyes		Approved By: <i>[Signature]</i>	
Title: Regulatory Analyst		Title: PETROLEUM ENGINEER	
E-mail Address: mreyes1@concho.com		Approved Date: JAN 31 2013 Expiration Date:	
Date: 1/23/2013		Conditions of Approval Attached	
Phone: 575-748-6945			

FEB 04 2013

DISTRICT I
1625 N. FRENCH DR., HOBBS, NM 88240

State of New Mexico
Energy, Minerals and Natural Resources Department

HOBBS OCD

DISTRICT II
1301 W. GRAND AVENUE, ARTESIA, NM 88210

OIL CONSERVATION DIVISION
11885 SOUTH ST. FRANCIS DR.
Santa Fe, New Mexico 87505

JAN 24 2013

Form C-102
Revised October 12, 2010
Submit to Appropriate District Office
State Lease - 4 Copies
Fee Lease - 3 Copies

DISTRICT III
1000 RIO BRAZOS RD., AZTEC, NM 87410

RECEIVED

DISTRICT IV
11885 S. ST. FRANCIS DR., SANTA FE, NM 87505

WELL LOCATION AND ACREAGE DEDICATION PLAT

☐ AMENDED REPORT

API Number 30-025- 40948	Pool Code 97895	Pool Name Wildcat G-08 S213304D; Bone Spring
Property Code 38601	Property Name CORAZON STATE UNIT	Well Number 6H
OGRID No. 229137	Operator Name COG OPERATING, LLC	Elevation 3842.6'

Surface Location

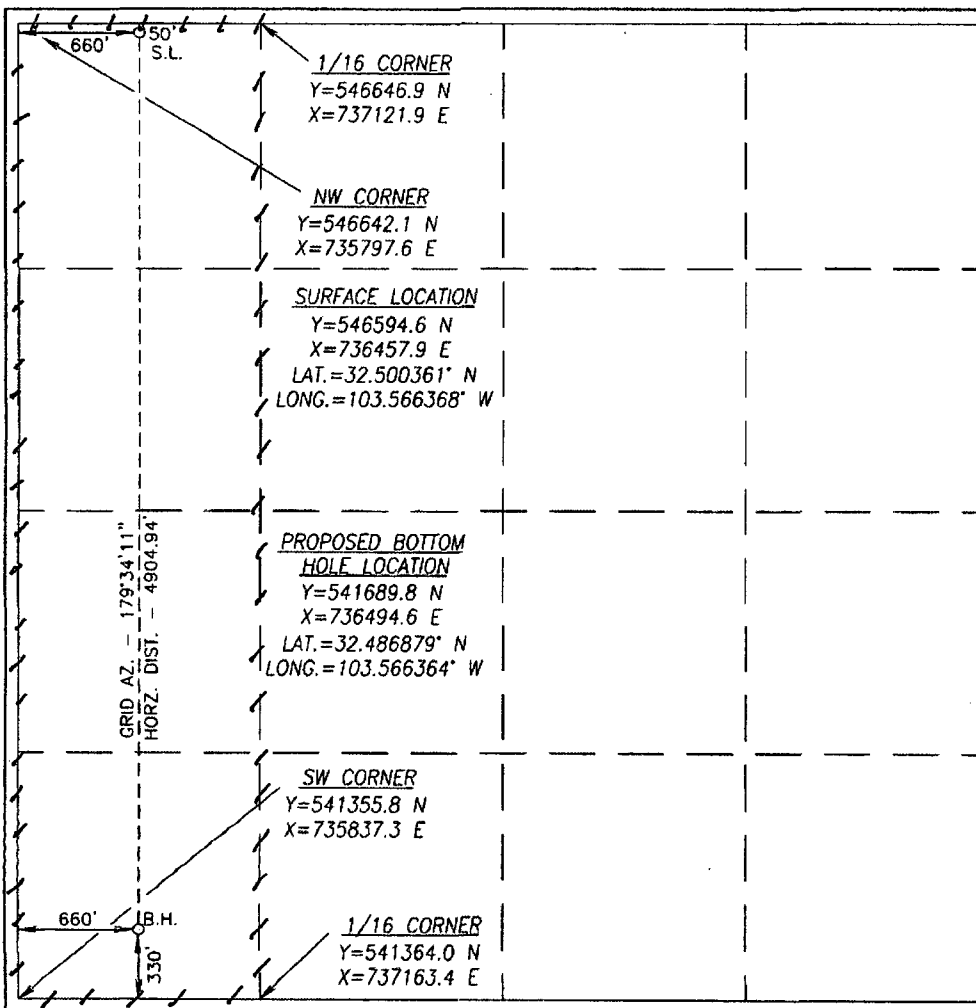
UL or lot No.	Section	Township	Range	Lot Idn	Feet from the	North/South line	Feet from the	East/West line	County
D	10	21-S	33-E		50	NORTH	660	WEST	LEA

Bottom Hole Location If Different From Surface

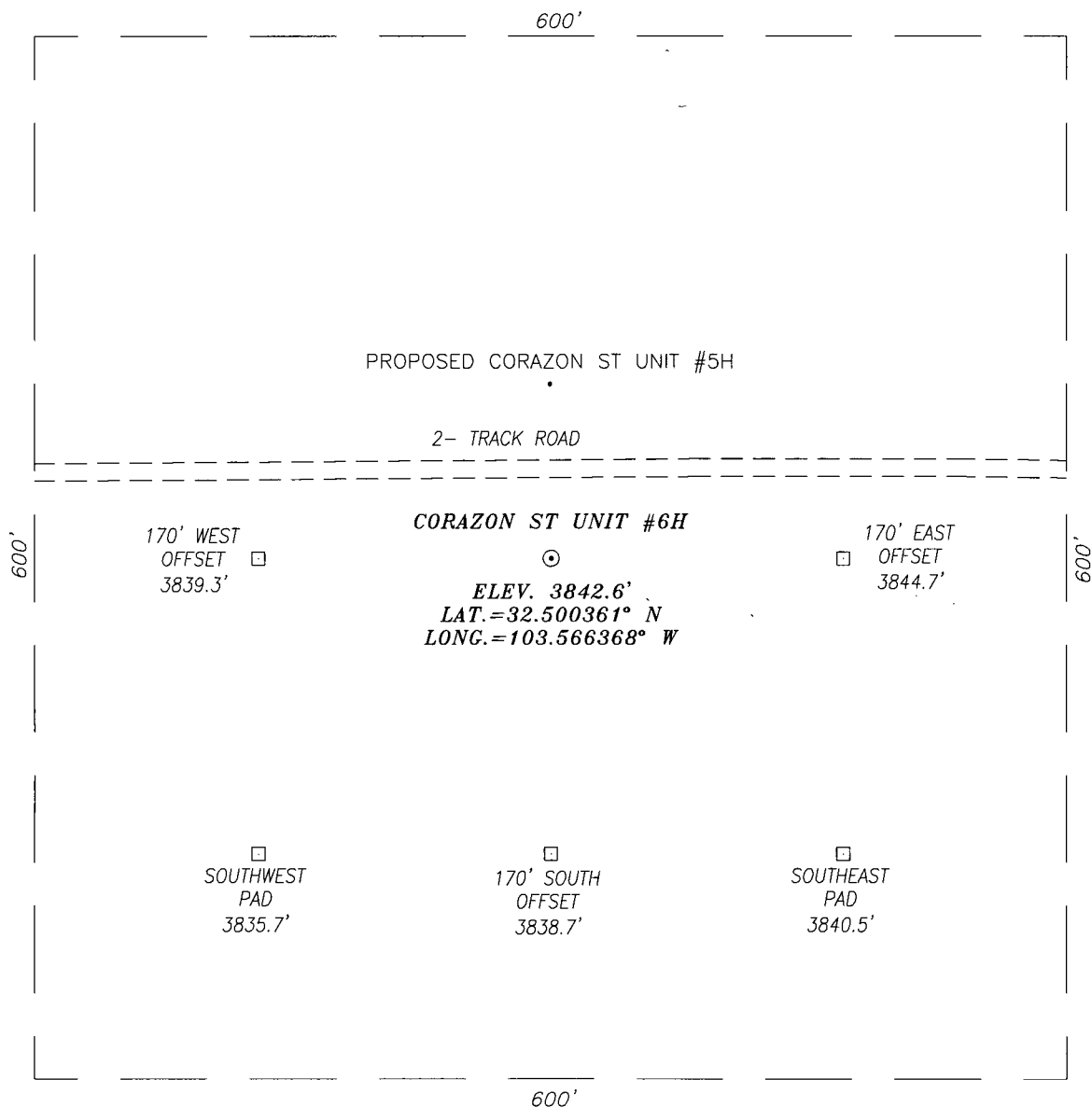
UL or lot No.	Section	Township	Range	Lot Idn	Feet from the	North/South line	Feet from the	East/West line	County
M	10	21-S	33-E		330	SOUTH	660	WEST	LEA

Dedicated Acres 160.0	Joint or Infill	Consolidation Code	Order No.
--------------------------	-----------------	--------------------	-----------

NO ALLOWABLE WILL BE ASSIGNED TO THIS COMPLETION UNTIL ALL INTERESTS HAVE BEEN CONSOLIDATED
OR A NON-STANDARD UNIT HAS BEEN APPROVED BY THE DIVISION

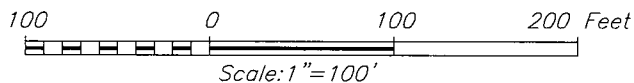
	<p>OPERATOR CERTIFICATION</p> <p>I hereby certify that the information herein is true and complete to the best of my knowledge and belief, and that this organization either owns a working interest or unleased mineral interest in the land including the proposed bottom hole location or has a right to drill this well at this location pursuant to a contract with an owner of such mineral or working interest, or to a voluntary pooling agreement or a compulsory pooling order heretofore entered by the division.</p> <p><i>Melanie J. Parker</i> 1/23/13 Signature Date Melanie J. Parker Printed Name</p> <p>SURVEYOR CERTIFICATION</p> <p>I hereby certify that the well location shown on this plat was plotted from field notes of actual surveys made by me or under my supervision, and that the same is true and correct to the best of my belief.</p> <p>AUGUST 10, 2012 Date Surveyed Signature of Professional Surveyor Professional Surveyor 17777 12-072 Certificate of Chad L. Harcrow 2012-037</p>
--	--

SECTION 10, TOWNSHIP 21 SOUTH, RANGE 33 EAST, N.M.P.M.,
LEA COUNTY NEW MEXICO



DIRECTIONS TO LOCATION

HEADING EAST ON HWY. 176 TURN RIGHT 0.9 MILES PAST MILE MARKER 11
ONTO BERRY RANCH ROAD SOUTH ON ROAD FOR APPROX. 0.7 MILES THEN
RIGHT ONTO A 2-TRACK ROAD, FOLLOW 2-TRACK ROAD FOR 1.6 MILES AND
WELL IS 0.3 MILES WEST.



HARCROW SURVEYING
1107 WATSON, ARTESIA N.M. 88210
PH: (575) 513-2570
FAX: (575) 746-2808
EST. 2007

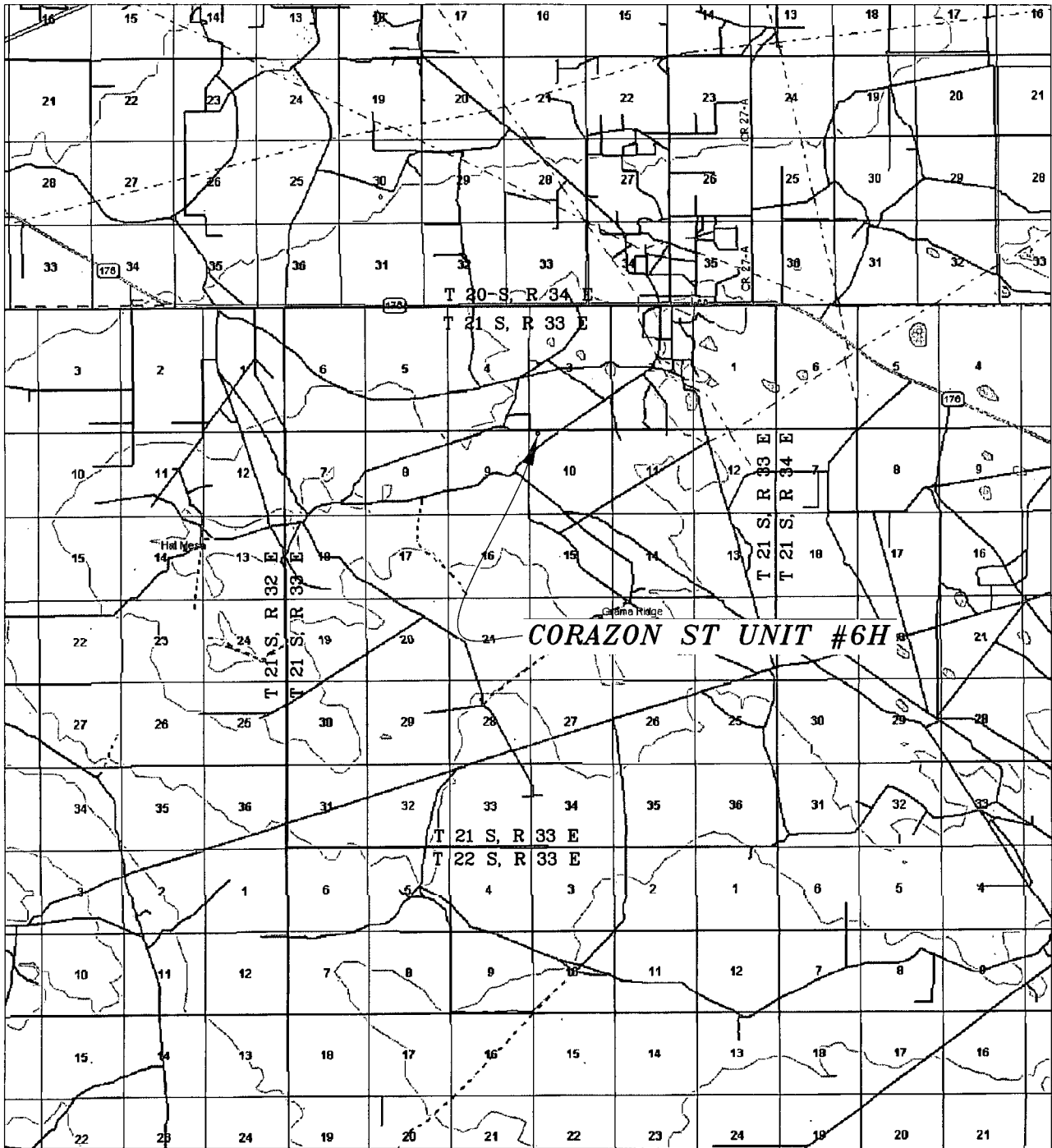


COG OPERATING, LLC

CORAZON ST UNIT #6H WELL
LOCATED 50 FEET FROM THE NORTH LINE
AND 660 FEET FROM THE WEST LINE OF SECTION 10,
TOWNSHIP 21 SOUTH, RANGE 33 EAST, N.M.P.M.,
LEA COUNTY, NEW MEXICO

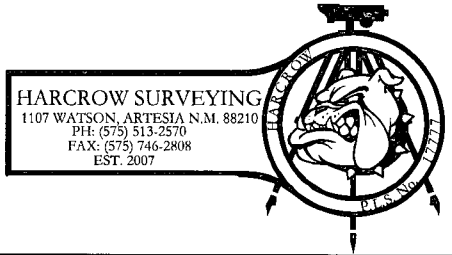
SURVEY DATE: AUGUST 07, 2012	PAGE: 1 OF 1
DRAFTING DATE: AUGUST 10, 2012	
APPROVED BY: CH	DRAWN BY: DDSI FILE: 12-072

VICINITY MAP



SEC. 10 TWP. 21-S RGE. 33-E
 SURVEY N.M.P.M.
 COUNTY LEA STATE NEW MEXICO
 DESCRIPTION 50' FNL & 660' FWL
 ELEVATION 3843'
 OPERATOR COG OPERATING, LLC
 LEASE CORAZON ST UNIT

SCALE: 1" = 2 MILES

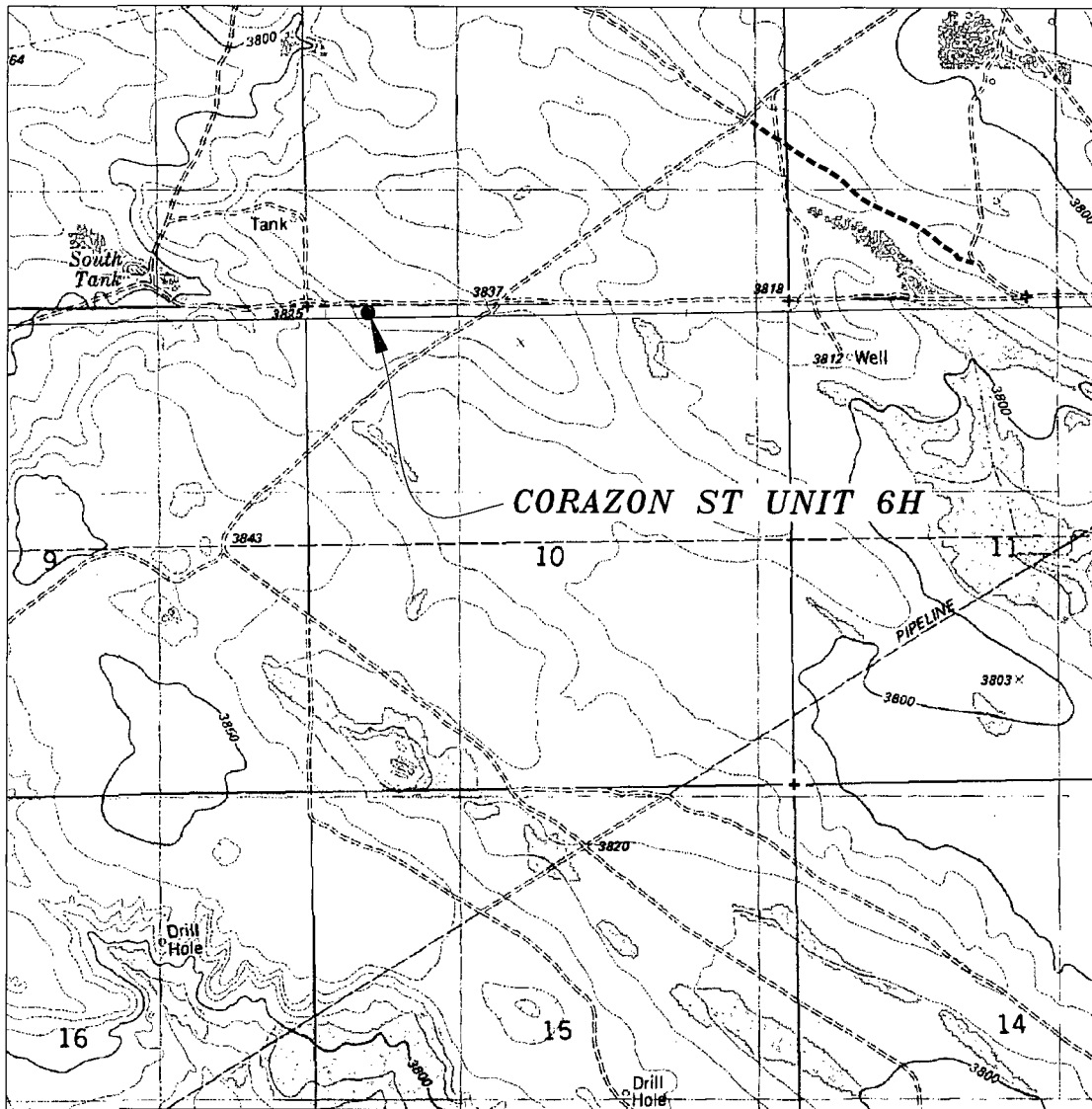


HARCROW SURVEYING
 1107 WATSON, ARTESIA N.M. 88210
 PH: (575) 513-2570
 FAX: (575) 746-2808
 EST. 2007

COG OPERATING, LLC

SURVEY DATE: AUGUST 07, 2012	PAGE: 1 OF 1
DRAFTING DATE: AUGUST 10, 2012	
APPROVED BY: CH	DRAWN BY: DDSI FILE: 12-072

LOCATION VERIFICATION MAP



SCALE: 1" = 2000'

CONTOUR INTERVAL: 10'

SEC. 10 TWP. 21-S RGE. 33-E
 SURVEY N.M.P.M.
 COUNTY LEA STATE NEW MEXICO
 DESCRIPTION 50' FNL & 660' FWL
 ELEVATION 3843'
 OPERATOR COG OPERATING, LLC
 LEASE CORAZON ST UNIT
 U.S.G.S. TOPOGRAPHIC MAP
 GRAMA RIDGE, N.M.

HARCROW SURVEYING
 1107 WATSON, ARTESIA N.M. 88210
 PH: (575) 513-2570
 FAX: (575) 746-2808
 EST. 2007



COG OPERATING, LLC

SURVEY DATE: AUGUST 07, 2012	PAGE: 1 OF 1
DRAFTING DATE: AUGUST 10, 2012	
APPROVED BY: CH	DRAWN BY: DDSI FILE: 12-072