

District I
 1625 N. French Dr., Hobbs, NM 88240
 Phone: (575) 393-6161 Fax: (575) 393-0720

District II
 811 S. First St., Artesia, NM 88210
 Phone: (575) 748-1283 Fax: (575) 748-9720

District III
 1000 Rio Brazos Road, Aztec, NM 87410
 Phone: (505) 334-6178 Fax: (505) 334-6170

District IV
 1220 S. St. Francis Dr., Santa Fe, NM 87505
 Phone: (505) 476-3460 Fax: (505) 476-3462

State of New Mexico

Form C-101
 Revised November 14, 2012

Energy Minerals and Natural Resources

Oil Conservation Division

☐ AMENDED REPORT

1220 South St. Francis Dr.

Santa Fe, NM 87505

HOBBS OCD
 JAN 31 2013

APPLICATION FOR PERMIT TO DRILL, RE-ENTER, DEEPEN, PLUGBACK, OR ADD A ZONE

| | | |
|--|--|-------------------------------|
| 1. Operator Name and Address Chevron USA, Inc. 15 Smith Road Midland, TX 79705 | | 2. OGRID Number 4323 |
| 3. Property Code 39677 | 4. Property Name MCCLOY RANCH 29 24 33 ST | 5. API Number 30-225-40971 |
| | | 6. Well No. 3H |

7. Surface Location

| UL - Lot | Section | Township | Range | Lot Idn | Feet from | N/S Line | Feet From | E/W Line | County |
|----------|---------|----------|-------|---------|-----------|----------|-----------|----------|--------|
| B | 29 | 24S | 33E | | 100' | S | 2020' | E | LEA |

8. Proposed Bottom Hole Location

| UL - Lot | Section | Township | Range | Lot Idn | Feet from | N/S Line | Feet From | E/W Line | County |
|----------|---------|----------|-------|---------|-----------|----------|-----------|----------|--------|
| O | 29 | 24S | 33E | | 300' | S | 2020' | E | LEA |

9. Pool Information

| | | |
|--------------------------------------|-----------|----------------------|
| TRISTE DRAW; BONE SPRING <i>East</i> | Pool Name | Pool Code 9660382 |
|--------------------------------------|-----------|----------------------|

Additional Well Information

| | | | | |
|-------------------------------------|-------------------------------|--|-----------------------|---|
| 11. Work Type N | 12. Well Type O | 13. Cable/Rotary R | 14. Lease Type S | 15. Ground Level Elevation 3531' |
| 16. Multiple N | 17. Proposed Depth 15,726' | 18. Formation Bone Spring | 19. Contractor TBD | 20. Spud Date |
| Depth to Ground water NO RECORDS | | Distance from nearest fresh water well NO RECORDS | | Distance to nearest surface water 16 MILES |

21. Proposed Casing and Cement Program

| Type | Hole Size | Casing Size | Casing Weight/ft | Setting Depth | Sacks of Cement | Estimated TOC |
|--------------|-----------|-------------|------------------|---------------|-----------------|---------------|
| Surface | 17 1/2" | 13 3/8" | 48# | 1300' | 1800 | 0' |
| Intermediate | 12 1/4" | 9 5/8" | 40# | 5000' | 1800 | 0' |
| Production | 8 3/4" | 5 1/2" | 17# | 15,726' | 1400 | 4500' |

Casing/Cement Program: Additional Comments

| |
|-----------------------------------|
| DETAILED INFORMATION IS ATTACHED. |
|-----------------------------------|

22. Proposed Blowout Prevention Program

| Type | Working Pressure | Test Pressure | Manufacturer |
|------------|------------------|---------------|--------------|
| Double Ram | 5000 | 5000 | |

**Permit Expires 2 Years From Approval
 Date Unless Drilling Underway**

| | | | |
|---|--|--|--|
| 23. I hereby certify that the information given above is true and complete to the best of my knowledge and belief. I further certify that I have complied with 19.15.14.9 (A) NMAC <input type="checkbox"/> and/or 19.15.14.9 (B) NMAC <input type="checkbox"/> , if applicable. Signature: <i>Bryan Arrant</i> | | OIL CONSERVATION DIVISION Approved By: <i>[Signature]</i> Title: Petroleum Engineer Approved Date: FEB 01 2013 Expiration Date: | |
| Printed name: Bryan Arrant-Agent for Chevron USA, Inc. Title: Regulatory Specialist II E-mail Address: bryan.arrant@chk.com Date: 01/30/2013 | | Conditions of Approval Attached | |

District I
1625 N. French Dr., Hobbs, NM 88240
Phone: (575) 393-6161 Fax: (575) 393-0720
District II
811 S. First St., Artesia, NM 88210
Phone: (575) 748-1283 Fax: (575) 748-9720
District III
1600 Rio Brazos Road, Aztec, NM 87410
Phone: (505) 334-6178 Fax: (505) 334-6170
District IV
1220 S. St. Francis Dr., Santa Fe, NM 87505
Phone: (505) 476-3460 Fax: (505) 476-3462

HOBBS OGD

JAN 31 2013

RECEIVED

State of New Mexico
Energy, Minerals & Natural Resources Department
OIL CONSERVATION DIVISION
1220 South St. Francis Dr.
Santa Fe, NM 87505

Form C-102
Revised August 1, 2011
Submit one copy to appropriate
District Office

☐ AMENDED REPORT

WELL LOCATION AND ACREAGE DEDICATION PLAT

| | | | | | |
|--|--|---|--|--|--|
| ¹ API Number 30-025-40971 | | ³ Pool Code (96683) 82 | | ² Pool Name TRISTE DRAW; BONE SPRING East | |
| ⁴ Property Code 39677 | | ⁵ Property Name MCCLOY RANCH 29 24 33 ST | | | ⁶ Well Number 3H |
| ⁷ OGRID No. 4323 | | ⁸ Operator Name CHEVRON U.S.A. INC. | | | ⁹ Elevation 3531' |

10 Surface Location

| UL or lot no. | Section | Township | Range | Lot Idn | Feet from the | North/South line | Feet from the | East/West line | County |
|---------------|---------|----------|-------------------|---------|---------------|------------------|---------------|----------------|--------|
| B | 29 | 24 SOUTH | 33 EAST, N.M.P.M. | | 100' | NORTH | 2020' | EAST | LEA |

11 Bottom Hole Location If Different From Surface

| UL or lot no. | Section | Township | Range | Lot Idn | Feet from the | North/South line | Feet from the | East/West line | County |
|---------------|---------|----------|-------------------|---------|---------------|------------------|---------------|----------------|--------|
| O | 29 | 24 SOUTH | 33 EAST, N.M.P.M. | | 300' | SOUTH | 2020' | EAST | LEA |

| | | | |
|---|-------------------------------|----------------------------------|-------------------------|
| ¹² Dedicated Acres 160 | ¹³ Joint or Infill | ¹⁴ Consolidation Code | ¹⁵ Order No. |
|---|-------------------------------|----------------------------------|-------------------------|

No allowable will be assigned to this completion until all interests have been consolidated or a non-standard unit has been approved by the division.

| | | |
|--|--|--|
| <div data-bbox="194 1127 430 1393"> <p>MCCLOY RANCH 29 24 33 ST 3H</p> <p>X= 729,376 NAD 27 Y= 435,635 LAT. 32.195503 LONG. 103.591829</p> <p>X= 770,561 NAD83 Y= 435,693 LAT. 32.195628 LONG. 103.592306</p> <p>ELEVATION = 3531' NAVD 83</p> </div> <div data-bbox="194 1649 430 1893"> <p>PROPOSED BOTTOM HOLE LOCATION</p> <p>X= 729,411 NAD 27 Y= 430,752 LAT. 32.182080 LONG. 103.591824</p> <p>X= 770,596 NAD83 Y= 430,810 LAT. 32.182204 LONG. 103.592300</p> </div> | | <p>12 OPERATOR CERTIFICATION I hereby certify that the information contained herein is true and complete to the best of my knowledge and belief, and that this organization either owns a working interest or indicated mineral interest in the land including the proposed bottom hole location or has a right to drill this well at this location pursuant to a contract with an owner of such a mineral or working interest, or to a voluntary pooling agreement or a compulsory pooling order heretofore entered by the division.</p> <p><i>Bryan Arrant</i> 01/29/2013 Signature Date</p> <p>Bryan Arrant (Agent for Chevron)</p> <p>Printed Name <u>bryan.arrant@chk.com</u></p> <p>E-mail Address</p> <p>13 SURVEYOR CERTIFICATION I hereby certify that the well location shown on this plat was plotted from field notes of actual surveys made by me or under my supervision, and that the same is true and correct to the best of my belief.</p> <p><i>[Signature]</i> 01/29/2013 Date of Survey</p> <p><i>[Signature]</i> Signature and Seal of Registered Professional Surveyor</p> <p>DANIEL J. DANIEL III NEW MEXICO REGISTERED PROFESSIONAL SURVEYOR 15078</p> <p>Certificate Number #15078</p> |
|--|--|--|

McCloy Ranch 29-24-33 ST 3H

NMOCD's forms C-102, C-144(CLEZ) pit permit, directional planning report, and depth to ground water reports are enclosed. There are no known high levels of H₂S in this area. However, monitoring of H₂S and well readiness will be utilized in the drilling of this well. This well will not require a NSL as operator will comply with NMOCD's horizontal rules. The first perf will be +/- 40' behind the float shoe (TD of well). Surface hole will be drilled with fresh water mud, intermediate-brine and production hole with cut-brine.

McCloy Ranch 29-24-33 ST 3H

| Type | Hole Size (") | Casing Size (in) | Casing Weight (#'s) | Setting Depth (ft) | Estimated TOC (ft) | Bottom of Cemented Interval (ft) | Sacks of Cement (sx) |
|--------------|------------------|--|------------------------|-----------------------|-----------------------|-------------------------------------|-------------------------|
| Surface | 17.5 | 13.375 | 48 | 1,300 | 0 | 1,300 | 1,800 |
| Intermediate | 12.25 | 9.625 | 40 | 5,000 | 0 | 5,000 | 1,800 |
| Production | 8.75 | 5.5 | 17 | 15,726 | 4,500 | 11,322 | 1,400 |
| | | ** Lateral will be an OH Packer Completion (no cement) from 15,726' (TD) to 11,322' (End of Curve). There will be a stage tool at the End of Curve to cement back up to 500' inside Intermediate csg thru. | | | | | |

JAN 31 2013

RECEIVED

| MCCLOY RANCH 29 24 33 ST NO. 3H WELL | NW ARCH. AREA CRN. | NE ARCH. AREA CRN. | SE ARCH. AREA CRN. | SW ARCH. AREA CRN. |
|--|---|---|---|---|
| X= 729,376 NAD 27 Y= 435,635 LAT. 32.195503 LONG. 103.591829 | X= 729,073 NAD 27 Y= 435,935 ELEVATION +3533' NAVD 88 | X= 729,673 NAD 27 Y= 435,938 ELEVATION +3532' NAVD 88 | X= 729,676 NAD 27 Y= 435,338 ELEVATION +3530' NAVD 88 | X= 729,076 NAD 27 Y= 435,335 ELEVATION +3536' NAVD 88 |
| | NW PAD CRN. | NE PAD CRN. | SE PAD CRN. | SW PAD CRN. |
| X= 770,561 NAD83 Y= 435,693 LAT. 32.195628 LONG. 103.592306 ELEVATION +3531' NAVD 88 | X= 729,210 NAD 27 Y= 435,759 ELEVATION +3532' NAVD 88 | X= 729,541 NAD 27 Y= 435,761 ELEVATION +3531' NAVD 88 | X= 729,542 NAD 27 Y= 435,461 ELEVATION +3529' NAVD 88 | X= 729,212 NAD 27 Y= 435,459 ELEVATION +3533' NAVD 88 |

R 33 E

PROPOSED
ARCHAEOLOGICAL AREA
±5.99 Acres

Sec. 20
State of New Mexico

600'

PROPOSED PAD
±2.27 Acres

330'

125'

165'

165'

175'

300'

McCloy Ranch
29-24-33 St
No. 3H Well
FNL=100'
FEL=2020'

PROPOSED
ACCESS ROAD
14' X ±794'
±0.26 Acres
±48.12 Rods

Proposed
Access for
McCloy Ranch
29-24-33 St
No. 1H Well

Existing Pipelines

Existing Road

Proposed Access for
McCloy Ranch 29-24-33 St
No. 4H Well

LEGEND

- ☐ Proposed Well
- Section Line
- Existing Pipeline
- Existing Road

NOTE:

PLEASE BE ADVISED, THAT WHILE REASONABLE EFFORTS ARE MADE TO LOCATE AND VERIFY PIPELINES AND ANOMALIES USING OUR STANDARD PIPELINE LOCATING EQUIPMENT, IT IS IMPOSSIBLE TO BE 100% EFFECTIVE. AS SUCH, WE ADVISE USING CAUTION WHEN PERFORMING WORK AS THERE IS A POSSIBILITY THAT PIPELINES AND OTHER HAZARDS, SUCH AS FIBER OPTIC CABLES, PVC PIPELINES, ETC. MAY EXIST UNDETECTED ON SITE.

MANY STATES MAINTAIN INFORMATION CENTERS THAT ESTABLISH LINKS BETWEEN THOSE WHO DIG (EXCAVATORS) AND THOSE WHO OWN AND OPERATE UNDERGROUND FACILITIES (OPERATORS). IT IS ADVISABLE AND IN MOST STATES, LAW, FOR THE CONTRACTOR TO CONTACT THE CENTER FOR ASSISTANCE IN LOCATING AND MARKING UNDERGROUND UTILITIES. NEW MEXICO ONE CALL, <http://www.nmonecall.org/>.

DISCLAIMER: AT THIS TIME, FENSTERMAKER & ASSOCIATES, INC. HAS NOT PERFORMED NOR WAS ASKED TO PERFORM ANY TYPE OF ENGINEERING, HYDROLOGICAL MODELING, FLOOD PLAIN, OR "NO RISE" CERTIFICATION ANALYSES, INCLUDING BUT NOT LIMITED TO DETERMINING WHETHER THE PROJECT WILL IMPACT FLOOD HAZARDS IN CONNECTION WITH FEDERAL/FEMA, STATE, AND/OR LOCAL LAWS, ORDINANCES AND REGULATIONS. ACCORDINGLY, FENSTERMAKER MAKES NO WARRANTY OR REPRESENTATION OF ANY KIND AS TO THE FOREGOING ISSUES, AND PERSONS OR ENTITIES USING THIS INFORMATION SHALL DO SO AT THEIR OWN RISK.

Sec. 29

State of New Mexico

FOR THE EXCLUSIVE USE OF
CHEVRON U.S.A. INC.

I, WM. J. Daniel III, Registered Professional
Land Surveyor, do hereby state this plat is true
and correct to the best of my knowledge.



WM. J. Daniel III
Registration No. 15078

SURFACE USE PLAT

Scale: 1"=200'

200' 0 100' 200'

CHEVRON U.S.A. INC.
PROPOSED PAD & ACCESS ROAD
MCCLOY RANCH 29 24 33 ST NO. 3H WELL
SECTIONS 20 & 29, T24S-R33E
LEA COUNTY, NEW MEXICO



135 Regency Sq. Lafayette, LA 70508
Ph. 337-237-2200 Fax. 337-232-3299
www.fenstermaker.com

DRAWN BY: BMO

REVISIONS

PROJ. MGR.: DBM

No.

DATE:

REVISED BY:

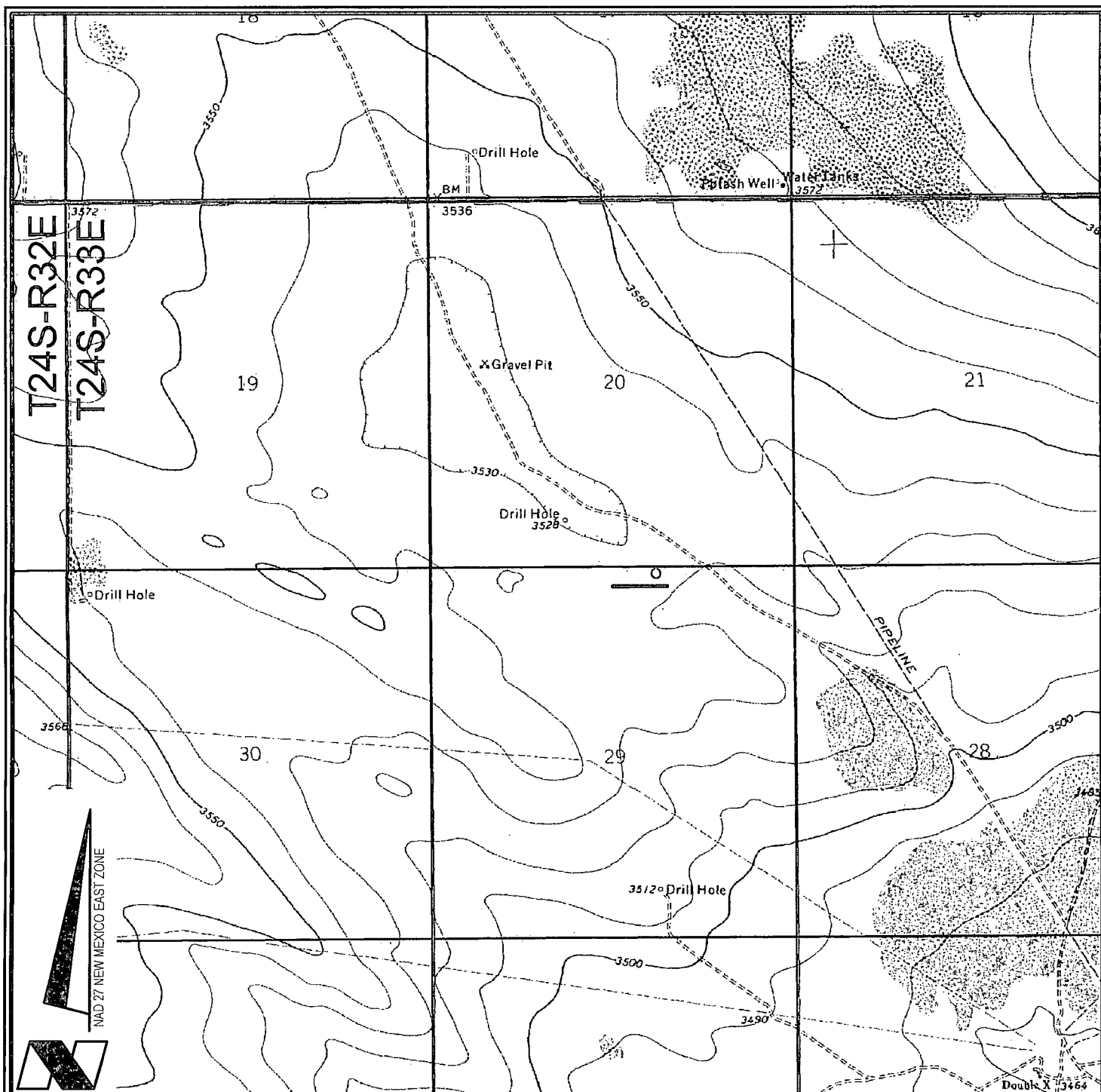
DATE: 01/18/2013

No.

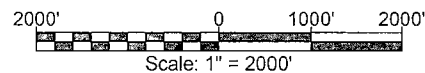
DATE:

REVISED BY:

FILENAME: T:\2012\128716DWG\CUI_McCloy Ranch 29 24 33 St 3H_SUP.dwg



VICINITY MAP



CHEVRON U.S.A. INC.
 MCCLOY RANCH 29 24 33 ST NO. 3H WELL
 LOCATED 100' FNL AND 2020' FEL
 SECTION 29, T24S-R33E
 LEA COUNTY, NEW MEXICO



Lafayette New Orleans Houston
 135 Regency Sq. Lafayette, LA 70508
 Ph. 337-237-2200 Fax. 337-232-3299
www.fenstermaker.com

DRAWN BY: BMO

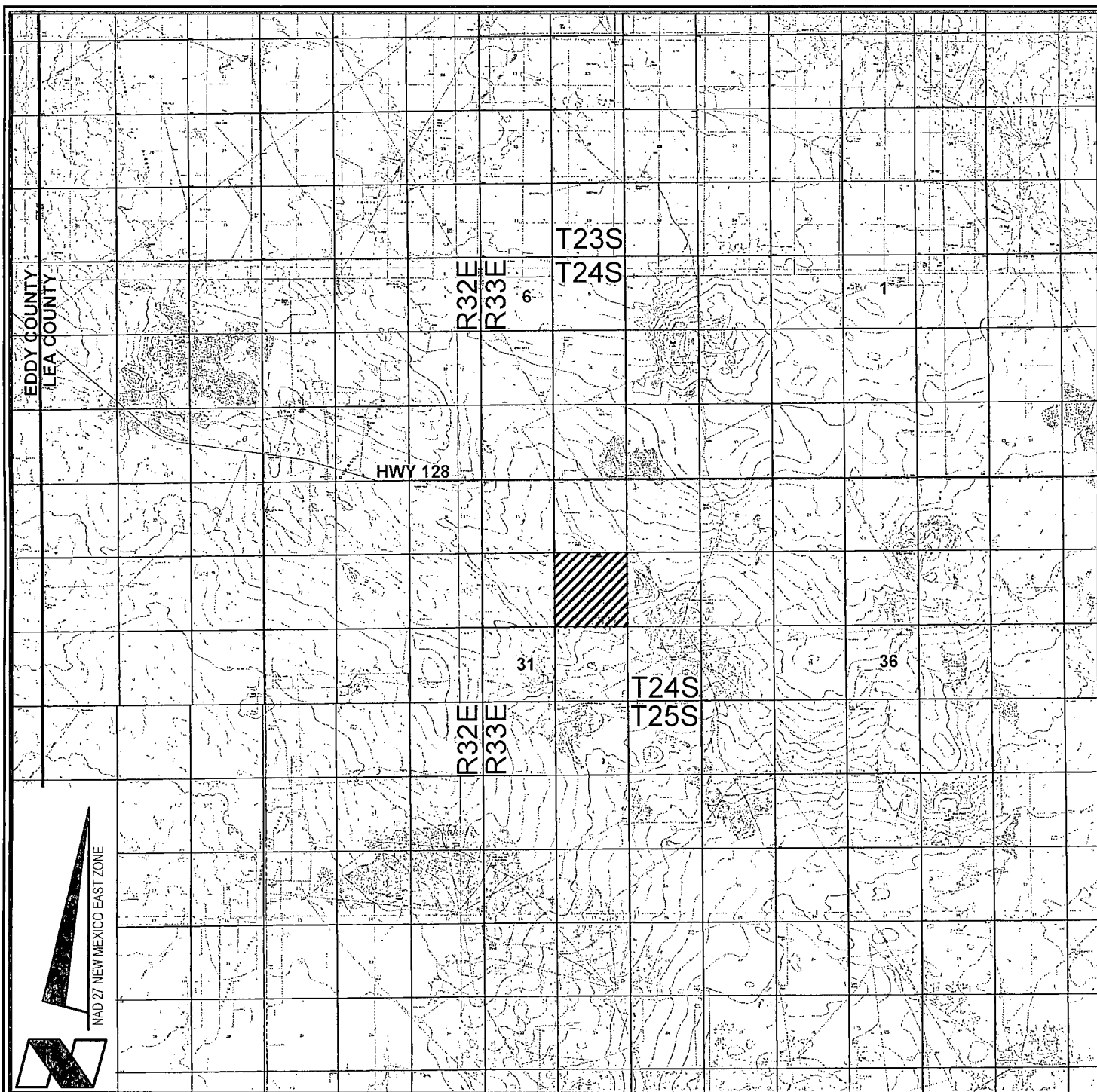
REVISED:

DATE: 01/18/2013

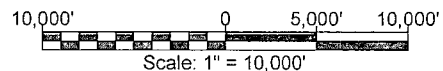
PROJ. MGR.: DBM

SHEET 1 OF 3 SHEETS

FILENAME: T:\2012\2128716\DWG\CUI\ McCloy Ranch 29 24 33 St 3H_APD.dwg



VICINITY MAP



CHEVRON U.S.A. INC.

MCCLOY RANCH 29 24 33 ST NO. 3H WELL
 LOCATED 100' FNL AND 2020' FEL
 SECTION 29, T24S-R33E
 LEA COUNTY, NEW MEXICO



Lafayette New Orleans Houston
 135 Regency Sq. Lafayette, LA 70508
 Ph. 337-237-2200 Fax. 337-232-3299
www.fenstermaker.com

DRAWN BY: BMO

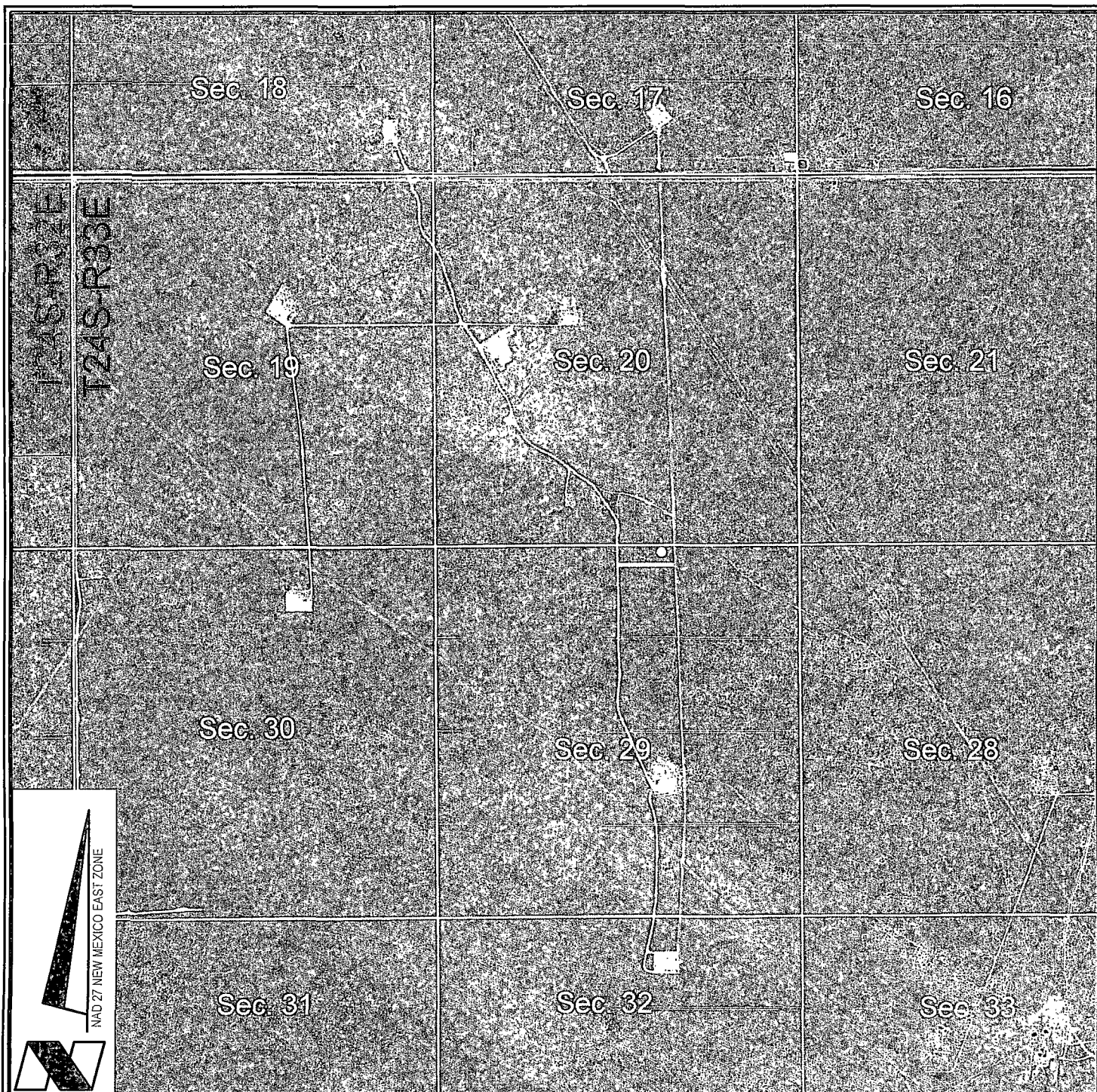
REVISED:

DATE: 01/18/2013

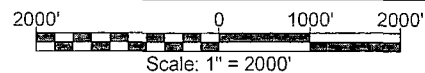
PROJ. MGR.: DBM




SHEET 2 OF 3 SHEETS

FILENAME: T:\2012\128716\DWG\CUI_McCloy Ranch 29 24 33 St 3H_APD.dwg



VICINITY MAP



-  = FEDERAL LAND
-  = FEE LAND
-  = STATE LAND

CHEVRON U.S.A. INC.
 MCCLOY RANCH 29 24 33 ST NO. 3H WELL
 LOCATED 100' FNL AND 2020' FEL
 SECTION 29, T24S-R33E
 LEA COUNTY, NEW MEXICO



Lafayette New Orleans Houston
 135 Regency Sq. Lafayette, LA 70508
 Ph. 337-237-2200 Fax. 337-232-3299
www.fenstermaker.com

DRAWN BY: BMO

REVISED:

DATE: 01/18/2013

PROJ. MGR.: DBM

SHEET 3 OF 3 SHEETS

FILENAME: T:\2012\2128716\DWG\CUI_McCloy Ranch 29 24 33 St 3H_APD.dwg