

**District I**  
1625 N. French Dr., Hobbs, NM 88240  
Phone: (575) 393-6161 Fax: (575) 393-0720

**District II**  
811 S. First St., Artesia, NM 88210  
Phone: (575) 748-1283 Fax: (575) 748-9720

**District III**  
1000 Rio Brazos Road, Aztec, NM 87410  
Phone: (505) 334-6178 Fax: (505) 334-6170

**District IV**  
1220 S. St. Francis Dr., Santa Fe, NM 87505  
Phone: (505) 476-3460 Fax: (505) 476-3462

**HOBBS OCD**

State of New Mexico

**HOBBS OCD**

Form C-101  
Revised November 14, 2012

Energy Minerals and Natural Resources **FEB 01 2013**

**FEB 01 2013**

Oil Conservation Division

☐ AMENDED REPORT

1220 South St. Francis Dr.

**RECEIVED**

Santa Fe, NM 87505

**RECEIVED**

**APPLICATION FOR PERMIT TO DRILL, RE-ENTER, DEEPEN, PLUGBACK, OR ADD A ZONE**

<sup>1</sup> Operator Name and Address ICA ENERGY OPERATING, LLC P.O. BOX 2712 ODESSA, TEXAS 79760-2712		<sup>4</sup> OGRID Number 178694
<sup>3</sup> Property Code 39189		<sup>5</sup> APL Number 30-025-40773
<sup>2</sup> Property Name KIZER RANCH 5		<sup>6</sup> Well No. 2

**7. Surface Location**

UL - Lot	Section	Township	Range	Lot Idn	Feet from	N/S Line	Feet From	E/W Line	County
E	5	9-S	34-E		1980	N	660	W	LEA

**8. Proposed Bottom Hole Location**

UL - Lot	Section	Township	Range	Lot Idn	Feet from	N/S Line	Feet From	E/W Line	County
E	5	9-S	34-E		1980	N	660	W	LEA

**9. Pool Information**

Pool Name	Pool Code
CLR (SAN ANDRES)	12450

**Additional Well Information**

<sup>11</sup> Work Type	<sup>12</sup> Well Type	<sup>13</sup> Cable/Rotary	<sup>14</sup> Lease Type	<sup>15</sup> Ground Level Elevation
N	O	R	P	4307'
<sup>16</sup> Multiple	<sup>17</sup> Proposed Depth	<sup>18</sup> Formation	<sup>19</sup> Contractor	<sup>20</sup> Spud Date
NO	4800	SAN ANDRES	UNITED DRILLING, INC.	On or before 2/15/13
Depth to Ground water		Distance from nearest fresh water well		Distance to nearest surface water

**21. Proposed Casing and Cement Program**

Type	Hole Size	Casing Size	Casing Weight/ft	Setting Depth	Sacks of Cement	Estimated TOC
SURFACE	17-1/2"	13-3/8"	48#	350	400	SURFACE
INTERMEDIATE	11"	8-3/8"	32#	2500	400	SURFACE
PRODUCTION	7-7/8"	5-1/2"	17#	4800	750	

**Casing/Cement Program: Additional Comments**

**22. Proposed Blowout Prevention Program**

Type	Working Pressure	Test Pressure	Manufacturer
Bottom-Double Ram - Top Annular	5000#	5000#	SHAFFER

<sup>23</sup> I hereby certify that the information given above is true and complete to the best of my knowledge and belief. I further certify that I have complied with 19.15.14.9 (A) NMAC <input type="checkbox"/> and/or 19.15.14.9 (B) NMAC <input type="checkbox"/> , if applicable. Signature: <i>Debbie Curry</i> Printed name: <i>Debbie Curry</i> Title: <i>OPERATIONS ASSISTANT</i> E-mail Address: <i>dcurry@icaenergy.com</i> Date: <i>2/1/13</i> Phone: <i>432-580-5722</i>		<b>OIL CONSERVATION DIVISION</b> Approved By: <i>[Signature]</i> Title: <i>Petroleum Engineer</i> Approved Date: <i>FEB 01 2013</i> Expiration Date: <i>FEB 01 2015</i> Conditions of Approval Attached
---	--	---

**FEB 04 2013**

DISTRICT I  
1625 N. French Dr., Hobbs, NM 88240  
Phone (505) 734-6161 Fax (505) 734-6170  
DISTRICT II  
811 S. First St., Artesia, NM 88210  
Phone (505) 748-1283 Fax (505) 748-9720  
DISTRICT III  
1000 Rio Brazos Road, Aztec, NM 87401  
Phone (505) 734-6178 Fax (505) 734-6170  
DISTRICT IV  
1220 S. St. Francis Dr., Santa Fe, NM 87505  
Phone (505) 476-3460 Fax (505) 476-3461

HOBBS OCD

State of New Mexico  
Energy, Minerals & Natural Resources Department

OIL CONSERVATION DIVISION

1220 South St. Francis Dr.  
Santa Fe, New Mexico 87505

Form C-102

Revised August 1, 2011

Submit one copy to appropriate  
District Office

FEB 01 2013

RECEIVED

AMENDED REPORT

WELL LOCATION AND ACREAGE DEDICATION PLAT

API Number <b>30025-40973</b>	Pool Code <b>12450</b>	Pool Name <b>CLR; San Andres</b>
Property Code <b>39189</b>	Property Name <b>KIZER 5</b>	Well Number <b>2</b>
CURRY No. <b>178694</b>	Operator Name <b>ICA ENERGY OPERATING</b>	Elevation <b>4307'</b>

Surface Location

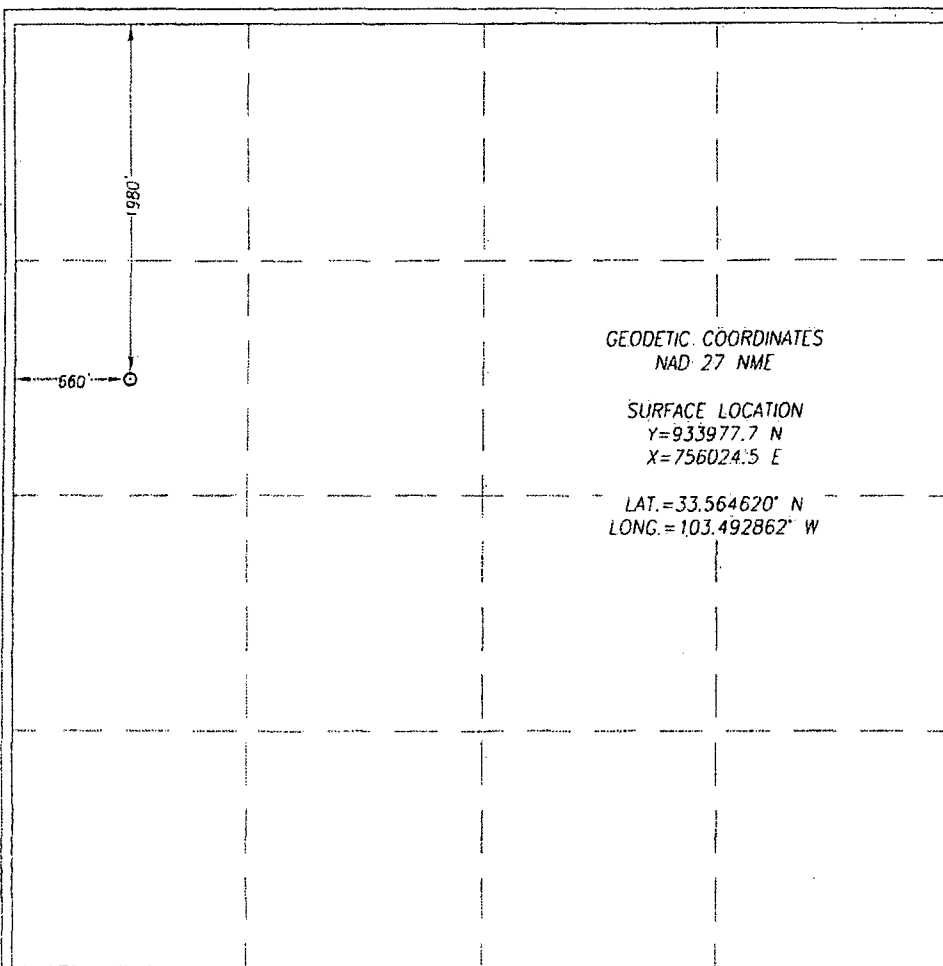
UL or lot No.	Section	Township	Range	Lot Idn	Feet from the	North/South line	Feet from the	East/West line	County
<b>E</b>	<b>5</b>	<b>9-S</b>	<b>34-E</b>		<b>1980</b>	<b>NORTH</b>	<b>660</b>	<b>WEST</b>	<b>LEA</b>

Bottom Hole Location If Different From Surface

UL or lot No.	Section	Township	Range	Lot Idn	Feet from the	North/South line	Feet from the	East/West line	County

Dedicated Acres	Joint or Infill	Consolidation Code	Order No.
<b>40</b>			

NO ALLOWABLE WILL BE ASSIGNED TO THIS COMPLETION UNTIL ALL INTERESTS HAVE BEEN CONSOLIDATED OR A NON-STANDARD UNIT HAS BEEN APPROVED BY THE DIVISION



OPERATOR CERTIFICATION

I hereby certify that the information herein is true and complete to the best of my knowledge and belief, and that this organization either owns a working interest or unleased mineral interest in the land including the proposed bottom hole location or has a right to drill this well at this location pursuant to a contract with an owner of such mineral or working interest, or to a voluntary pooling agreement or a compulsory pooling order heretofore entered by the division.

*Debbie Curry* 2/1/13  
Signature Date

*Debbie Curry*  
Printed Name

*dcurry@icaenergy.com*  
E-mail Address

SURVEYOR CERTIFICATION

I hereby certify that the well location shown on this plat was plotted from field notes of actual surveys made by me or under my supervision, and that the same is true and correct to the best of my belief.

JANUARY 17, 2013

Date of Survey

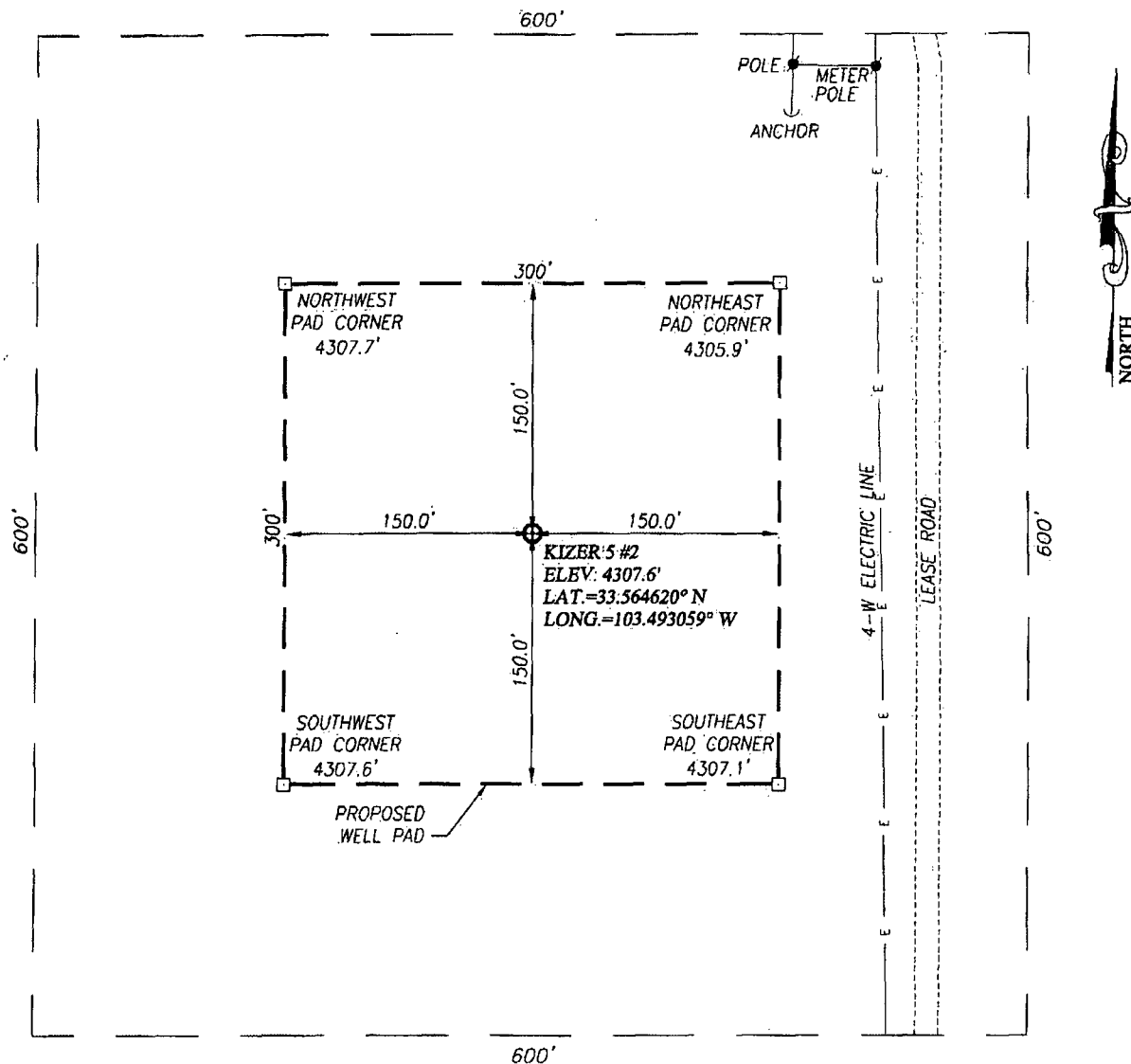
Signature & Seal of Professional Surveyor

*Gary G. Eidson* 1/30/13  
Signature

Certificate Number - Gary G. Eidson 12641  
Ronald J. Eidson 3239

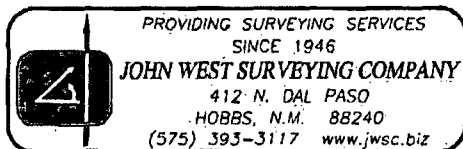
DSS 11-11-0001 JWSC W.O. 13-11-0001

**SECTION 5, TOWNSHIP 9 SOUTH, RANGE 34 EAST, N.M.P.M.**  
**LEA COUNTY** **NEW MEXICO**



**DIRECTIONS TO LOCATION**

FROM THE INTERSECTION OF ST. HWY. #206 AND CO. RD. T170 (CARROL RD.), GO WEST ON CO. RD. T170 APPROX. 10 MILES. VEER RIGHT AND GO NORTH APPROX. 0.4 MILES. CONTINUE NORTH ON CALICHE ROAD APPROX. 1.7 MILES. TURN RIGHT AT INTERSECTION AND GO EAST APPROX. 0.25 MILES. TURN LEFT AND GO NORTH APPROX. 0.9 MILES. TURN RIGHT AND GO EAST APPROX. 0.6 MILES. TURN LEFT AND GO NORTH APPROX. 0.45 MILES. TURN RIGHT AND GO EAST APPROX. 150 FEET. VEER RIGHT AND GO SOUTHEAST APPROX. 0.3 MILES. TURN LEFT AND GO SOUTH APPROX. 280 FEET. THIS LOCATION STAKE IS APPROX. 240 FEET WEST OF LEASE ROAD.



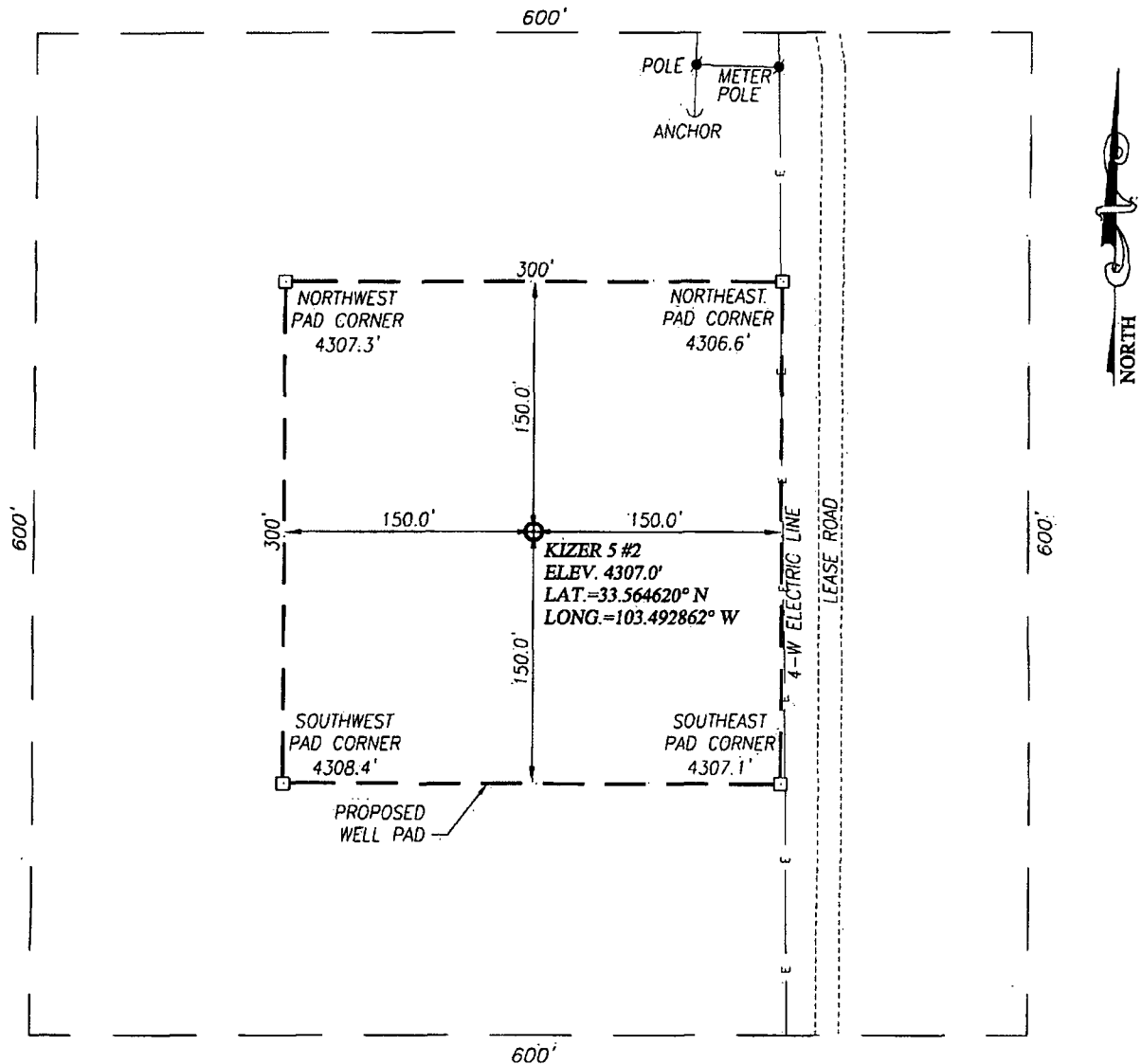
**ICA ENERGY OPERATING**

**KIZER 5 #2 WELL**  
**LOCATED 1980 FEET FROM THE NORTH LINE**  
**AND 600 FEET FROM THE WEST LINE OF SECTION 5,**  
**TOWNSHIP 9 SOUTH, RANGE 34 EAST, N.M.P.M.,**  
**LEA COUNTY, NEW MEXICO**

Survey Date: 1/17/13	CAD Date: 1/21/13	Drawn By: DSS
W.O. No.: 13110061	Rev: .	Rel. W.O.: .

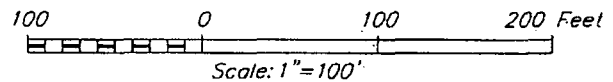
Sheet 1 of 1

**SECTION 5, TOWNSHIP 9 SOUTH, RANGE 34 EAST, N.M.P.M.**  
LEA COUNTY NEW MEXICO



**DIRECTIONS TO LOCATION**

FROM THE INTERSECTION OF ST. HWY. #206 AND CO. RD. T170 (CARROL RD.), GO WEST ON CO. RD. T170 APPROX. 10 MILES. VEER RIGHT AND GO NORTH APPROX. 0.4 MILES. CONTINUE NORTH ON CALICHE ROAD APPROX. 1.7 MILES. TURN RIGHT AT INTERSECTION AND GO EAST APPROX. 0.25 MILES. TURN LEFT AND GO NORTH APPROX. 0.9 MILES. TURN RIGHT AND GO EAST APPROX. 0.6 MILES. TURN LEFT AND GO NORTH APPROX. 0.45 MILES. TURN RIGHT AND GO EAST APPROX. 150 FEET. VEER RIGHT AND GO SOUTHEAST APPROX. 0.3 MILES. TURN LEFT AND GO SOUTH APPROX. 280 FEET. THIS LOCATION STAKE IS APPROX. 180 FEET WEST OF LEASE ROAD.



**ICA ENERGY OPERATING**

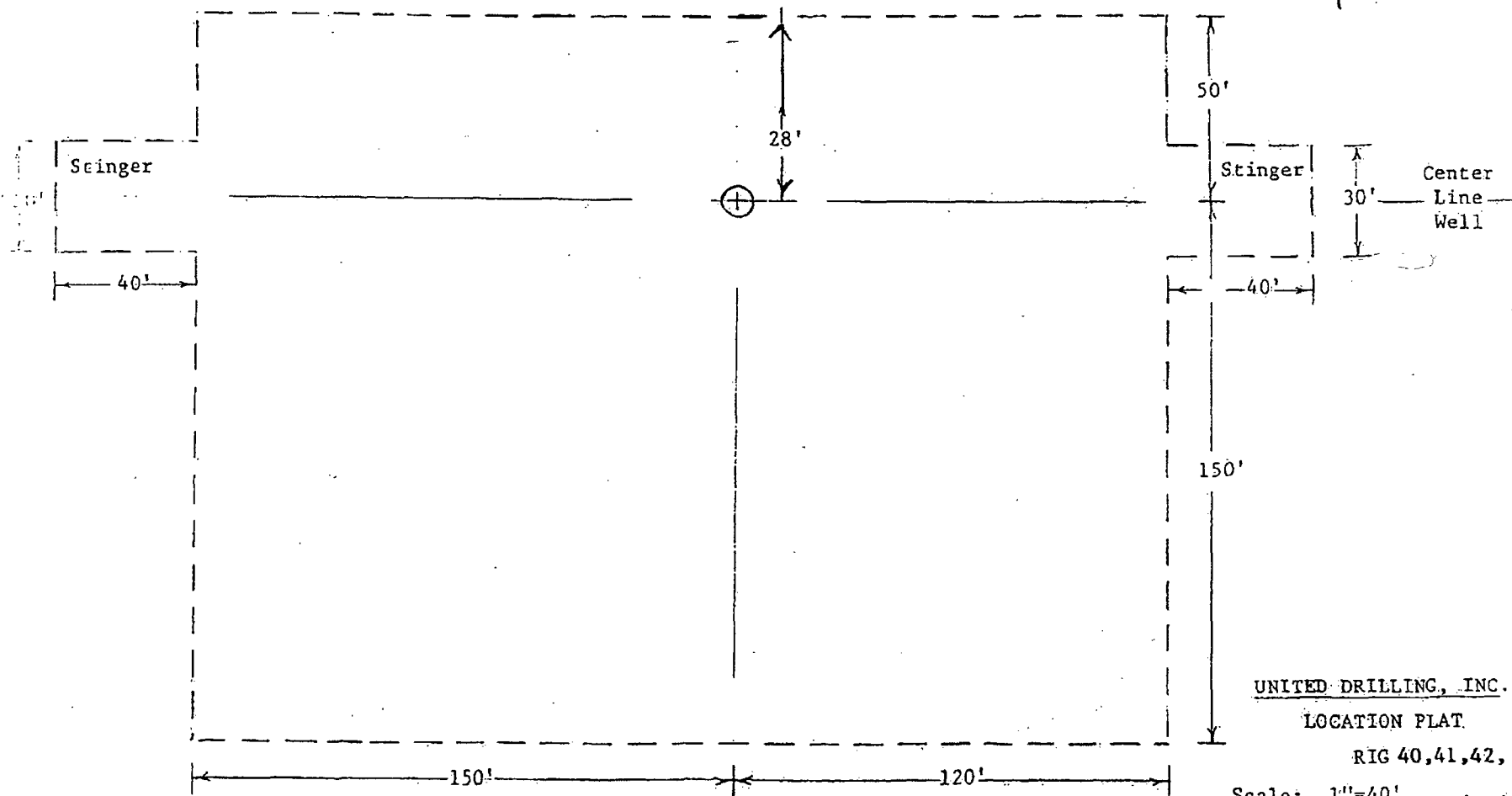
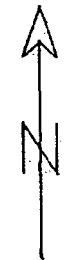
**KIZER 5 #2 WELL**  
LOCATED 1980 FEET FROM THE NORTH LINE  
AND 660 FEET FROM THE WEST LINE OF SECTION 5,  
TOWNSHIP 9 SOUTH, RANGE 34 EAST, N.M.P.M.,  
LEA COUNTY, NEW MEXICO

PROVIDING SURVEYING SERVICES  
SINCE 1946  
**JOHN WEST SURVEYING COMPANY**  
412 N. DAL PASO  
HOBBS, N.M. 88240  
(575) 393-3117 www.jwsc.biz

Survey Date: 1/17/13	CAD Date: 1/21/13	Drawn By: DSS
W.O. No.: 13110061	Rev: .	Rel. W.O.:

Sheet 1 of 1

Center  
Line  
Well



UNITED DRILLING, INC.

LOCATION PLAT

RIG 40,41,42, 43

Scale: 1"=40' 10/10/08

