

District I
1625 N. French Dr., Hobbs, NM 88240
Phone: (575) 393-6161 Fax: (575) 393-0720

District II
811 S. First St., Artesia, NM 88210
Phone: (575) 748-1283 Fax: (575) 748-9720

District III
1000 Rio Brazos Road, Aztec, NM 87410
Phone: (505) 334-6178 Fax: (505) 334-6170

District IV
1220 S. St. Francis Dr., Santa Fe, NM 87505
Phone: (505) 476-3460 Fax: (505) 476-3462

State of New Mexico

Form C-101
Revised November 14, 2012

Energy Minerals and Natural Resources

HOBBS OCD

Oil Conservation Division

HOBBS OCD

☐ AMENDED REPORT

1220 South St. Francis Dr.

JAN 24 2013

Santa Fe, NM 87505

RECEIVED

RECEIVED

APPLICATION FOR PERMIT TO DRILL, RE-ENTER, DEEPEN, PLUGBACK, OR ADD A ZONE

| | | | |
|---|--|--|--|
| 1. Operator Name and Address COG Operating LLC 2208 West Main Street Artesia, NM 88210 | | 2. OGRID Number 229137 | |
| 3. Property Code 381661 | | 4. Property Name Corazon State Unit | |
| 5. Well No 9H | | 6. API Number 30025 40951 | |

7. Surface Location

| UL - Lot | Section | Township | Range | Lot Idn | Feet from | N/S Line | Feet From | E/W Line | County |
|----------|---------|----------|-------|---------|-----------|----------|-----------|----------|--------|
| A | 10 | 21S | 33E | | 100 | North | 330 | East | Lea |

8. Proposed Bottom Hole Location

| UL - Lot | Section | Township | Range | Lot Idn | Feet from | N/S Line | Feet From | E/W Line | County |
|----------|---------|----------|-------|---------|-----------|----------|-----------|----------|--------|
| P | 10 | 21S | 33E | | 330 | South | 380 | East | Lea |

9. Pool Information

| Pool Name | Pool Code |
|----------------------|-----------|
| Wildcat, Bone Spring | 97895 |

Additional Well Information

| | | | | |
|---------------------------|------------------------------|--|-------------------------|-------------------------------------|
| 11. Work Type New Well | 12. Well Type Oil | 13. Cable/Rotary | 14. Lease Type State | 15. Ground Level Elevation 3817' |
| 16. Multiple N | 17. Proposed Depth 18800' | 18. Formation Bone Spring | 19. Contractor | 20. Spud Date 1/29/2013 |
| Depth to Ground water | | Distance from nearest fresh water well | | Distance to nearest surface water |

21. Proposed Casing and Cement Program

| Type | Hole Size | Casing Size | Casing Weight/ft | Setting Depth | Sacks of Cement | Estimated TOC |
|-----------|-----------|-------------|------------------|---------------|-----------------|---------------|
| Surface | 17.5 | 13.375 | 54.5 | 1900 | 1100 | |
| Intrmd | 12.25 | 9.625 | 36 | 5500 | 1400 | |
| Open Hole | 7.875 | 5.5 | 17 | 18800 | 1600 | 5300 |

Casing/Cement Program: Additional Comments

Plan to drill a 17-1/2" hole to 1900' with Fresh Water. Run 13-3/8", 54.5#, J-55 csg and cmt to surface. Drill 12-1/4" hole to 5500' with Brine, and run 9-5/8", 36# J55 (40# f/3500' - 5500') and cement to surface. Drill 7-7/8" hole with cut brine to 11,600' then drill 7-7/8" lateral to approx 18,800' MD (11,615' TVD). Run 5-1/2", 17#, P-110 csg and cement to 5300'.

22. Proposed Blowout Prevention Program

Permit Expires 2 Years From Approval Date Unless Drilling Underway

| Type | Working Pressure | Test Pressure | Manufacturer |
|------------|------------------|---------------|--------------|
| Double Ram | 3000 | 3000 | Cameron |

23. I hereby certify that the information given above is true and complete to the best of my knowledge and belief.

I further certify that I have complied with 19.15.14.9 (A) NMAC ☒ and/or 19.15.14.9 (B) NMAC ☒, if applicable.

Signature: *Mayte Reyes*

Printed name: Mayte Reyes

Title: Regulatory Analyst

E-mail Address: mreyes1@concho.com

Date: 1/23/2013

Phone: 575-748-6945

OIL CONSERVATION DIVISION

Approved By: *[Signature]*

Title: PETROLEUM ENGINEER

Approved Date: JAN 31 2013

Expiration Date:

Conditions of Approval Attached

FEB 04 2013

DISTRICT I
1625 N. FRENCH DR., HOBBS, NM 88240

DISTRICT II
1301 W. GRAND AVENUE, ARTESIA, NM 88210

DISTRICT III
1000 RIO BRAZOS RD., AZTEC, NM 87410

DISTRICT IV
11885 S. ST. FRANCIS DR., SANTA FE, NM 87505

State of New Mexico
Energy, Minerals and Natural Resources Department

HOBBS OCD

JAN 24 2013

OIL CONSERVATION DIVISION
11885 SOUTH ST. FRANCIS DR.
Santa Fe, New Mexico 87505

Form C-102
Revised October 12, 2010
Submit to Appropriate District Office
State Lease - 4 Copies
Fee Lease - 3 Copies

WELL LOCATION AND ACREAGE DEDICATION PLAT

☐ AMENDED REPORT

| | | |
|------------------------------|-------------------------------------|---|
| API Number 30-025 - 40951 | Pool Code 97895 | Pool Name Wildcat G-08 S213304D; Bone Spring |
| Property Code 38601 | Property Name CORAZON STATE UNIT | Well Number 9H |
| OGRID No. 229137 | Operator Name COG OPERATING, LLC | Elevation 3817.0' |

Surface Location

| UL or lot No. | Section | Township | Range | Lot Idn | Feet from the | North/South line | Feet from the | East/West line | County |
|---------------|---------|----------|-------|---------|---------------|------------------|---------------|----------------|--------|
| A | 10 | 21-S | 33-E | | 100 | NORTH | 330 | EAST | LEA |

Bottom Hole Location If Different From Surface

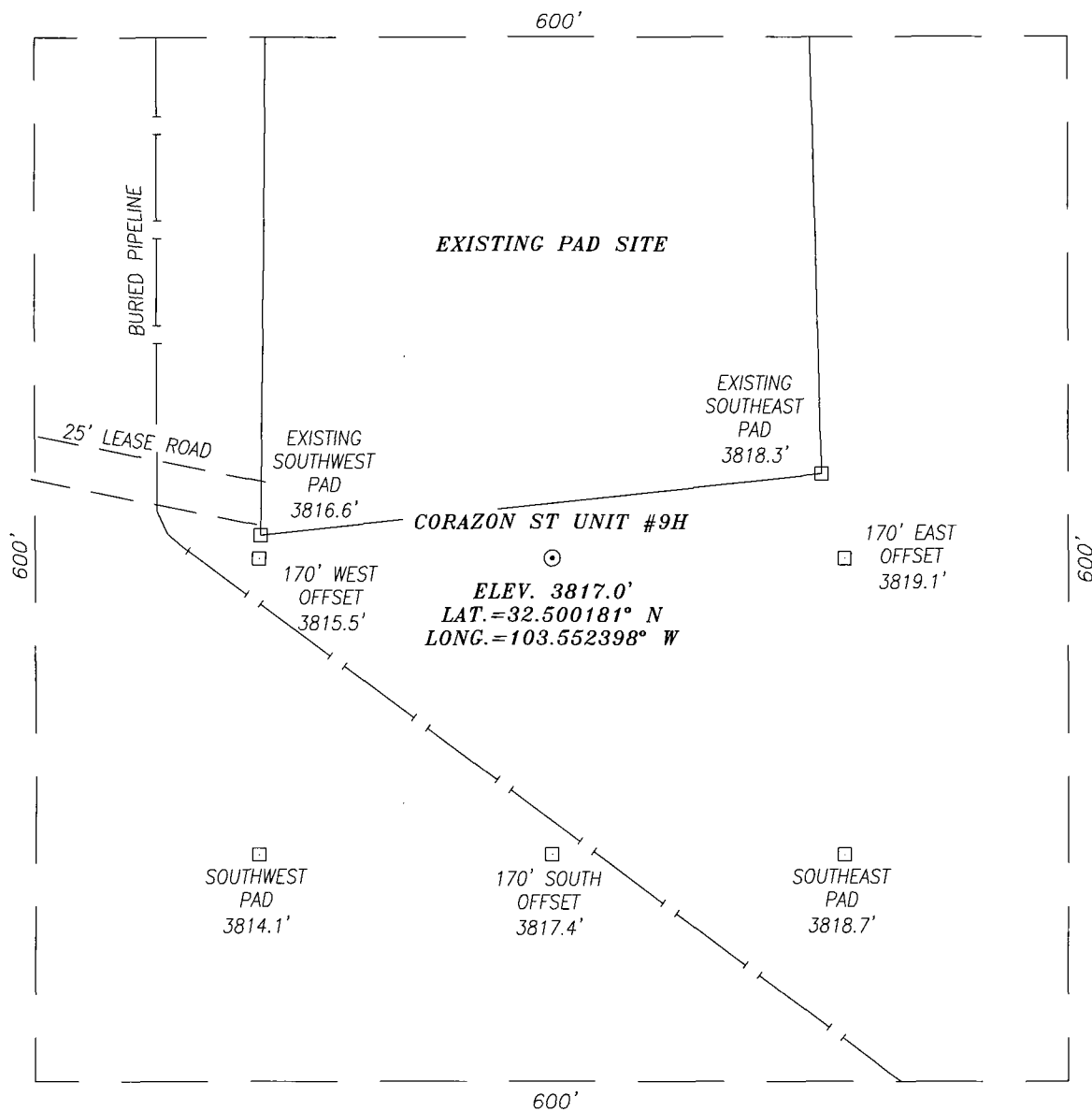
| UL or lot No. | Section | Township | Range | Lot Idn | Feet from the | North/South line | Feet from the | East/West line | County |
|---------------|---------|----------|-------|---------|---------------|------------------|---------------|----------------|--------|
| P | 10 | 21-S | 33-E | | 330 | SOUTH | 380 | EAST | LEA |

| Dedicated Acres | Joint or Infill | Consolidation Code | Order No. |
|-----------------|-----------------|--------------------|-----------|
| 160.0 | | | |

NO ALLOWABLE WILL BE ASSIGNED TO THIS COMPLETION UNTIL ALL INTERESTS HAVE BEEN CONSOLIDATED
OR A NON-STANDARD UNIT HAS BEEN APPROVED BY THE DIVISION

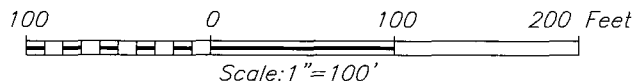
| | |
|---|---|
| <p>1/16 CORNER Y=546656.6 N X=739770.4 E</p> <p>NE CORNER Y=546661.5 N X=741094.7 E</p> <p>NAD 27 SURFACE LOCATION Y=546560.2 N X=740765.7 E LAT.=32.500181° N LONG.=103.552398° W</p> <p>NAD 27 PROPOSED BOTTOM HOLE LOCATION Y=541708.1 N X=740760.4 E LAT.=32.486844° N LONG.=103.552530° W</p> <p>1/16 CORNER Y=541375.7 N X=739816.2 E</p> <p>SE CORNER Y=541379.2 N X=741142.8 E</p> <p>GRID AZ. = 180°03'42" HORIZ. DIST. = 4852.70'</p> <p>100' S.L. 330'</p> <p>B.H. 380' 330'</p> | <p>OPERATOR CERTIFICATION</p> <p>I hereby certify that the information herein is true and complete to the best of my knowledge and belief, and that this organization either owns a working interest or unleased mineral interest in the land including the proposed bottom hole location or has a right to drill this well at this location pursuant to a contract with an owner of such mineral or working interest, or to a voluntary pooling agreement or a compulsory pooling order heretofore entered by the Division.</p> <p><i>Melanie J. Parker</i> 1/23/13 Signature Date Melanie J. Parker Printed Name</p> <p>SURVEYOR CERTIFICATION</p> <p>I hereby certify that the well location shown on this plat was plotted from field notes of actual surveys made by me or under my supervision, and that the same is true and correct to the best of my belief.</p> <p>OCTOBER 01 2012 Date Surveyed Signature of Professional Surveyor Professional Surveyor 12-136 Certificate No. 17777 2012-037</p> |
|---|---|

SECTION 10, TOWNSHIP 21 SOUTH, RANGE 33 EAST, N.M.P.M.,
LEA COUNTY NEW MEXICO



DIRECTIONS TO LOCATION:

HEADING EAST ON HWY. 176 TURN RIGHT 0.1 MILES PAST MILE MARKER 9
ONTO CALICHE LEASE ROAD. CONTINUE FOR APPROX. 2.9 MILES TURN RIGHT
ONTO A 25' LEASE ROAD, FOLLOW 25' LEASE ROAD FOR 0.5 MILES
LOCATION IS APPROX. 170 FEET EAST.



HARCROW SURVEYING
1107 WATSON, ARTESIA N.M. 88210
PH: (575) 513-2570
FAX: (575) 746-2808
EST. 2007

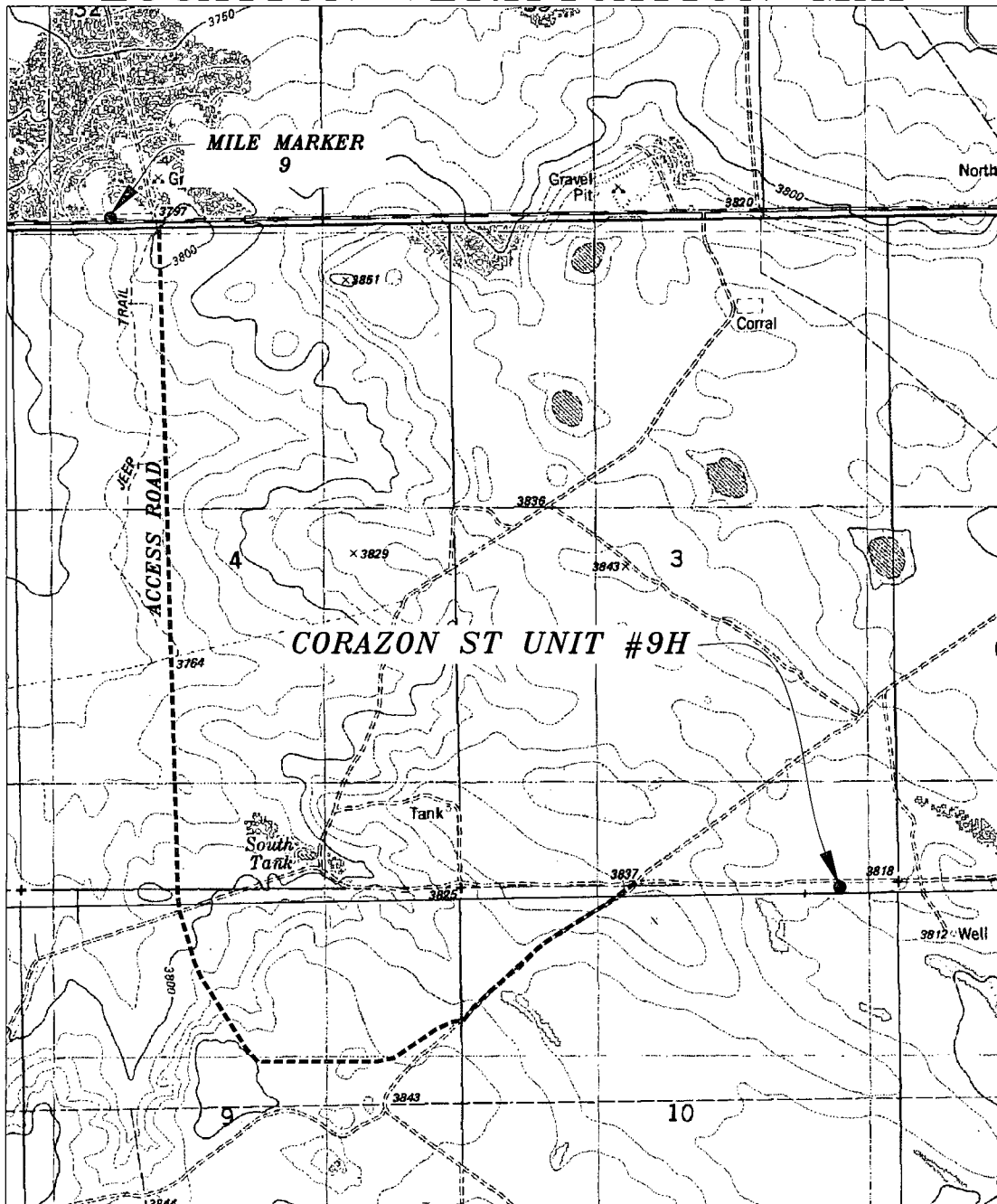


COG OPERATING, LLC

CORAZON ST UNIT #9H WELL
LOCATED 100 FEET FROM THE NORTH LINE
AND 330 FEET FROM THE EAST LINE OF SECTION 10,
TOWNSHIP 21 SOUTH, RANGE 33 EAST, N.M.P.M.,
LEA COUNTY, NEW MEXICO

| | |
|---------------------------------|-----------------------------|
| SURVEY DATE: SEPTEMBER 27, 2012 | PAGE: 1 OF 1 |
| DRAFTING DATE: OCTOBER 01, 2012 | |
| APPROVED BY: CH | DRAWN BY: DDSI FILE: 12-136 |

LOCATION VERIFICATION MAP



SCALE: 1" = 2000"

CONTOUR INTERVAL: 10'

SEC. 10 TWP. 21-S RGE. 33-E
 SURVEY N.M.P.M.
 COUNTY LEA STATE NEW MEXICO
 DESCRIPTION 100' FNL & 330' FEL
 ELEVATION 3817.0'
 OPERATOR COG OPERATING, LLC
 LEASE CORAZON ST UNIT
 U.S.G.S. TOPOGRAPHIC MAP
 GRAMA RIDGE, N.M.

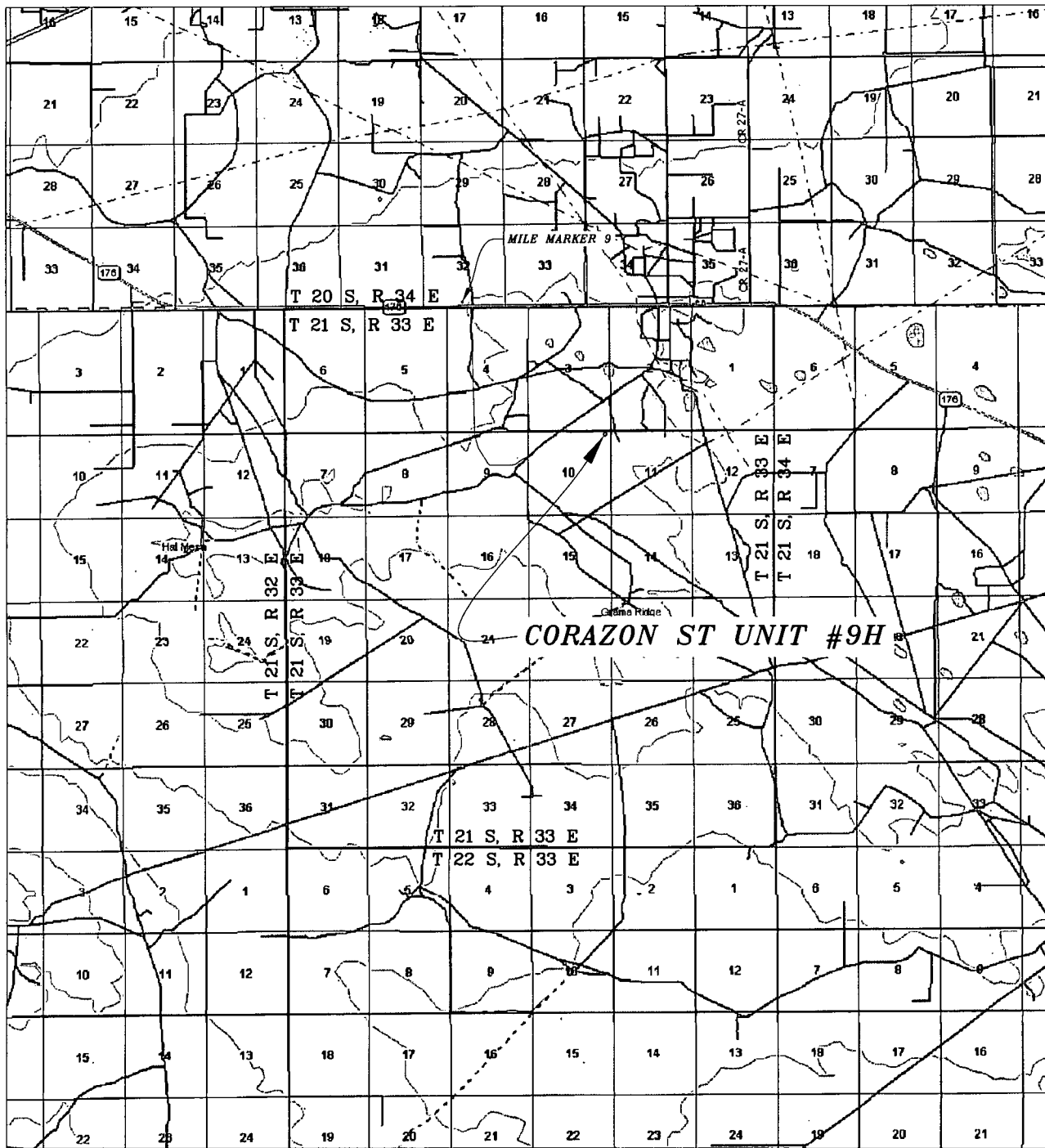
HARCROW SURVEYING
 1107 WATSON, ARTESIA N.M. 88210
 PH: (575) 513-2570
 FAX: (575) 746-2808
 EST. 2007



COG OPERATING, LLC

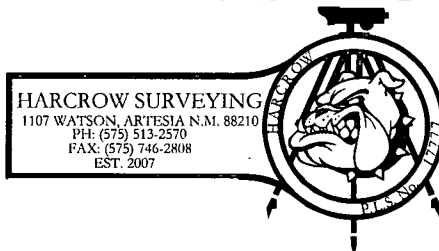
| | |
|---------------------------------|-----------------------------|
| SURVEY DATE: SEPTEMBER 27, 2012 | PAGE: 1 OF 1 |
| DRAFTING DATE: OCTOBER 01, 2012 | |
| APPROVED BY: CH | DRAWN BY: DDSI FILE: 12-136 |

VICINITY MAP



SEC. 10 TWP. 21-S RGE. 33-E
 SURVEY N.M.P.M.
 COUNTY LEA STATE NEW MEXICO
 DESCRIPTION 100' FNL & 330' FEL
 ELEVATION 3817.0'
 OPERATOR COG OPERATING, LLC
 LEASE CORAZON ST UNIT

SCALE: 1" = 2 MILES



| COG OPERATING, LLC | | |
|---------------------------------|----------------|--------------|
| SURVEY DATE: SEPTEMBER 27, 2012 | PAGE: 1 OF 1 | |
| DRAFTING DATE: OCTOBER 01, 2012 | | |
| APPROVED BY: CH | DRAWN BY: DDSI | FILE: 12-136 |